

ADDENDUM NO. 1

June 8, 2021

**Carmel Life and Learning Center Cardio Room Renovations
515 East Main Street
Carmel, IN 46032**

TO: ALL BIDDERS OF RECORD

This Addendum forms a part of and modifies the Bidding Requirements, Contract Forms, Contract Conditions, the Specifications and the Drawings dated March 19, 2021, by Fanning Howey Associates, Inc. Acknowledge receipt of the Addendum in the space provided on the Bid Form. Failure to do so may subject the Bidder to disqualification.

This Addendum consists of Pages ADD 1-1, and Fanning Howey Addendum No. 1 dated June 1, 2021, consisting of 1 page, 1 item, and Revised Drawing Sheet A1.01.

ADDENDUM NO. 1

Carmel Life and Learning Center – Cardio Room

Project No. 220177.00

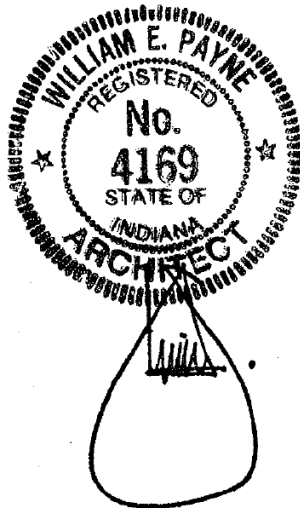
Carmel Clay Schools
Carmel, Indiana

Index of Contents

Addendum No. 1, 1 item, 1 page
Revised Drawing Sheets: A1.01

Date: June 1, 2021

FANNING/HOWEY ASSOCIATES, INC.
ARCHITECTS/ENGINEERS/CONSULTANTS



William E. Payne, AIA
Indiana Registration No. 4169

TO: ALL BIDDERS OF RECORD

ADDENDUM NO. 1 to Drawings dated March 19, 2021 for Carmel Life and Learning Center – Cardio Room for Carmel Clay Schools, 5201 East Main Street, Carmel, Indiana 46033; as prepared by Fanning/Howey Associates, Inc., Indianapolis, Indiana.

This Addendum shall hereby be and become a part of the Contract Documents the same as if originally bound thereto.

The following clarifications, amendments, additions, revisions, changes, and modifications change the original Contract Documents only in the amount and to the extent hereinafter specified in this Addendum.

Each bidder shall acknowledge receipt of this Addendum in his proposal or bid.

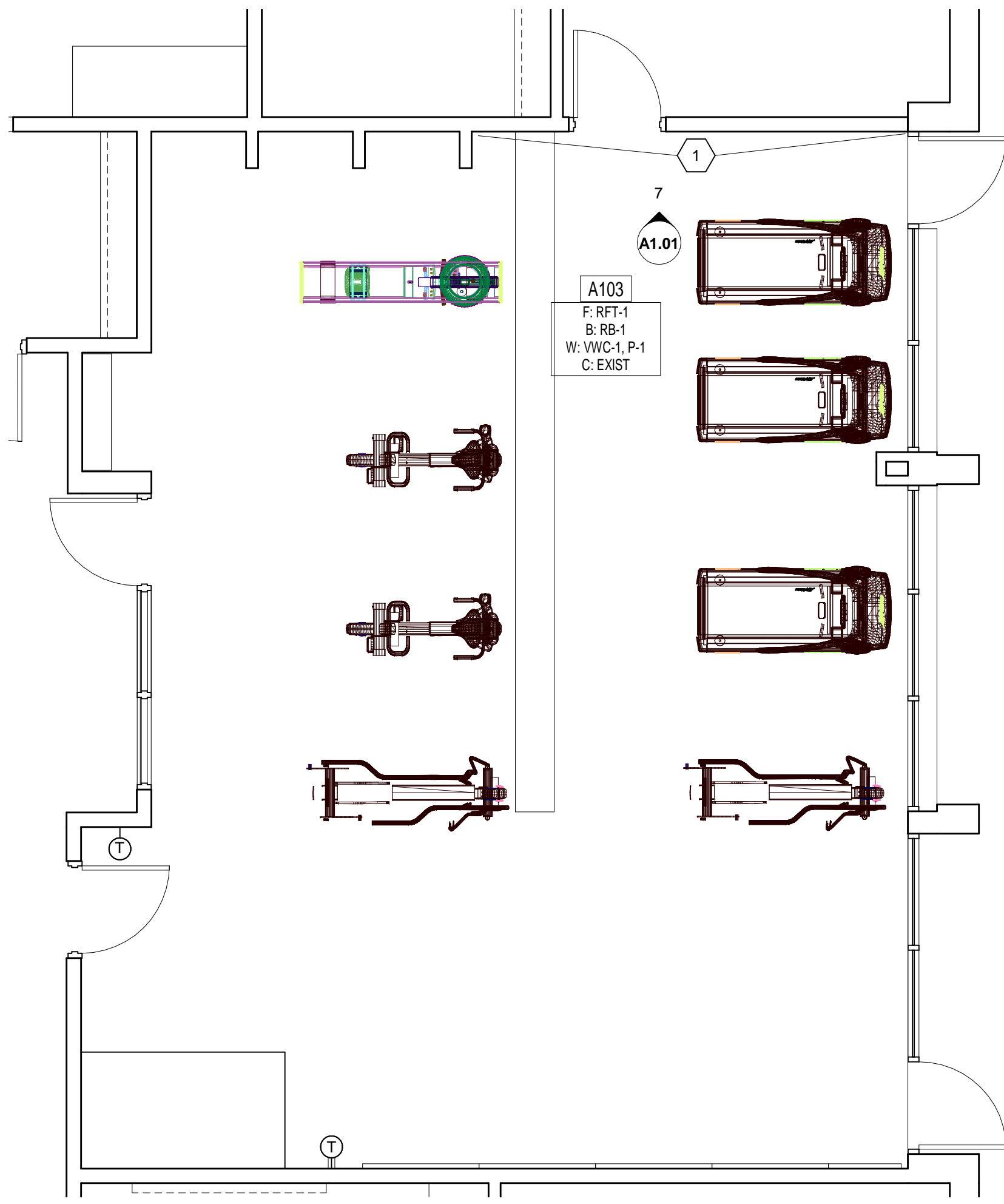
NOTE: Bidders are responsible for becoming familiar with every item of this Addendum. (This includes miscellaneous items at the very end of this Addendum.)

RE: ALL BIDDERS

ITEM NO. 1. REVISED DRAWING SHEETS

- A. Drawing Sheets: A1.01 have been revised, dated 06/01/21, and are included with and hereby made a part of this Addendum. These Drawings supersede the original documents.

END OF ADDENDUM



6 CARDIO ROOM FINISH PLAN

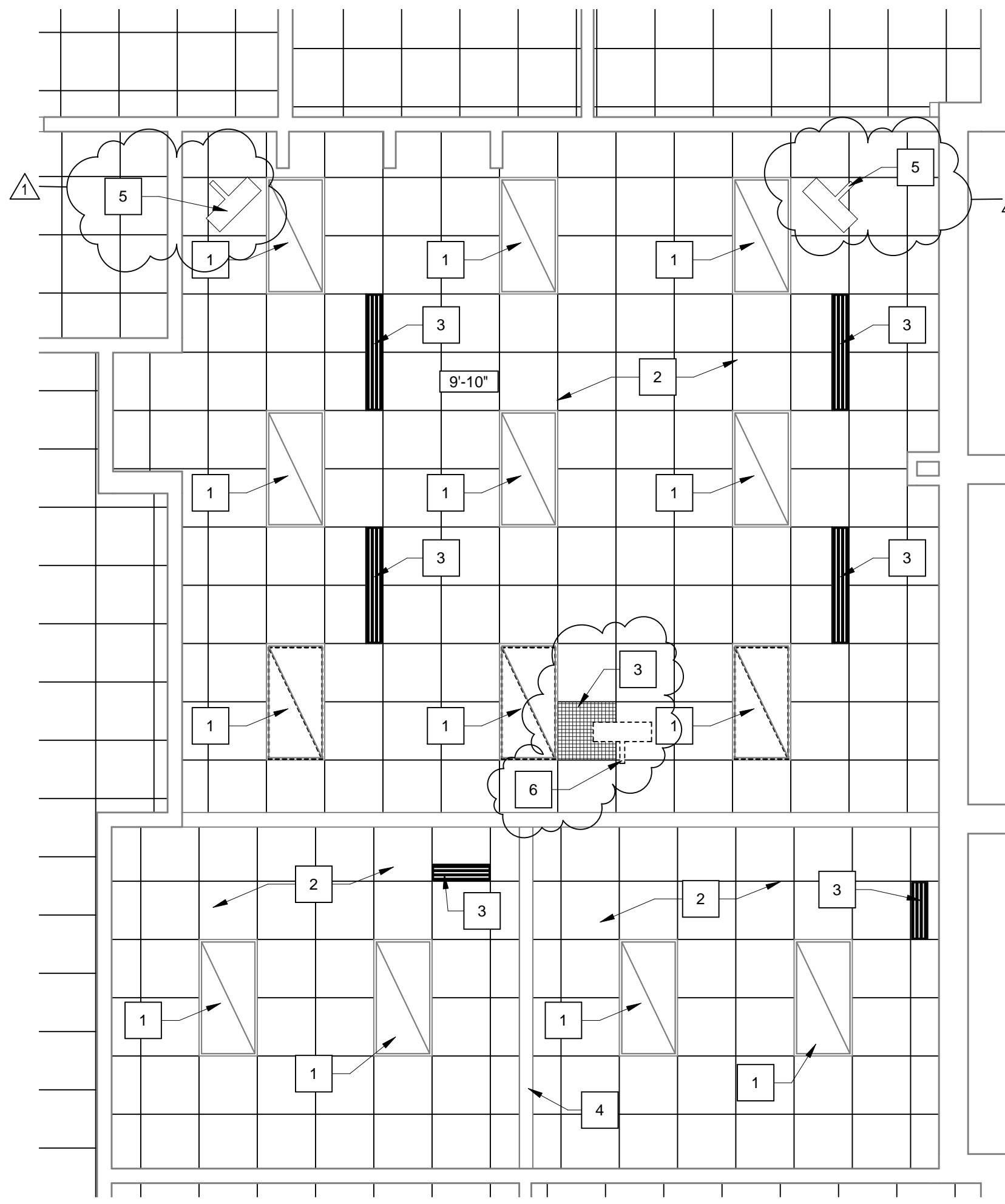
SCALE: 1/4" = 1'-0"

GENERAL FINISH NOTES

- A. FIXED CASEWORK AND TACKBOARDS SHALL REMAIN IN PLACE (UNO). NEW WALL FINISHES SHALL BE INSTALLED AROUND THESE ITEMS.
- B. SEALANT SHALL BE APPLIED AT ALL MATERIAL TRANSITIONS, BACKSPLASHES, AND DOOR FRAMES. ALL LOCATIONS WHERE NEW FINISH ABUTS A DISSIMILAR MATERIAL.
- C. REMOVE AND REINSTALL EXISTING DEVICE FACEPLATES, SWITCH FACEPLATES, TECHNOLOGY FACEPLATES, AND CLOCKS.
- D. EXISTING ITEMS TO REMAIN AND NEW FINISHES APPLIED AROUND INCLUDE BUT NOT LIMITED TO THERMOSTATS, AND FIRE EXTINGUISHER CABINETS (UNO).
- E. RESILIENT TRANSITION STRIP BETWEEN NEW FLOOR FINISH AND EXISTING FLOOR FINISH, COLOR TBD.
- F. PROVIDE NEW RESILIENT TRANSITION STRIPS AT EXPOSED EDGE OF NEW FLOOR FINISH TO EXISTING FLOOR FINISH.
- G. PAINT ALL SIDES (VERT. AND HORZ.) OF BULKHEADS/OFFIT COLOR INDICATED (UNO).
- H. PATCH AND REPAIR ALL HOLES AND IMPERFECTIONS. TO RECEIVE NEW FINISHES.
- I. PAINT ALL WALL SURFACES P-1, EXCEPT FOR WALL LOCATION OF DIGITAL WALL GRAPHIC (VWC-1).
- J. INTERIOR PAINT: GYPSUM BOARD, PRIME COAT - INTERIOR LATEX PRIMER/SEALER SIMILAR TO PPG 6-2 SPEEDHIDE QUICK DRYING LATEX SEALER, INTERMEDIATE AND TOPCOAT - INSTITUTIONAL LOW-ODOR VOC INTERIOR LATEX SIMILAR TO PPG SPEEDHIDE ZERO, 0 VOC, HORIZONTAL LOCATIONS, FLAT, VERTICAL LOCATIONS, EGGSHELL.
- K. RESILIENT BASE: 4 INCH HIGH, ASTM F 1881, TYPE TS OR TYPE TP, GROUP I OR GROUP II, STYLE B, COVE WITH MINIMUM THICKNESS OF 0.125 INCH. PROVIDE PREFORMED OR PRECUT CORNERS. MANUFACTURERS ARMSTRONG, JOHNSONITE OR SIMILAR.
- L. GYPSUM BOARD FINISHING: LEVEL 5 FINISH, WITH SKIM COAT, UTILIZE AT WALLS SCHEDULED TO BE PAINTED WITH SEMI-GLOSS OR GLOSS FINISH AND WHERE EXISTING VINYL WALL COVERING IS REMOVED AND PAINT IS NEW SURFACE FINISH. PROVIDE LEVEL 4 FINISH ON SURFACES TO RECEIVE FLAT AND EGGSHELL PAINT. PROVIDE LEVEL 4 ON SURFACES TO RECEIVE NEW VINYL FABRIC WALL COVERING.
- M. GYPSUM BOARD FINISHING MATERIALS INCLUDED PAPER JOINT TAPE, SETTING TYPE TAPING COMPOUNDS, DRYING TYPE ALL PURPOSE JOINT COMPOUNDS. PROVIDE CORNER BEADS AND SIMILAR ACCESSORIES AS REQUIRED.
- N. CUSTOM DIGITAL IMAGING WALL COVERING: SHALL BE PRINTED ON 53 INCHES HIGH VINYL WALL COVERING SUBSTRATE USING PIEZO DROP-ON-DEMAND TECHNOLOGY INCORPORATING A MINIMUM OF EIGHT COLORS. PRINTED IMAGE SHALL BE DRIED FROM BOTH FRONT AND BACK USING COMBINATIONS OF IR AND PLATEN HEATERS TO PREVENT MEDIA DISTORTION. VINYL WALL COVERING SUBSTRATE: MILDWEY WHITORIZED POLYVINYL CHLORIDE, ADHERED TO COTTON, COTTON/BLEND FABRIC BACKING, OR CELLULOSE POLYESTER NON-WOVEN BACKING. ALL MATERIALS SHALL BE CADMIUM AND MERCURY FREE, AND SHALL CONFORM TO THE CFAA W-101-B. WEIGHT: MINIMUM 13 OUNCES PER SQUARE YARD. BACKING WEIGHT: MINIMUM 2 OUNCES PER SQUARE YARD. PATTERN, IMAGE, AND COLOR: AS INDICATED IN LIST OF FINISHES.

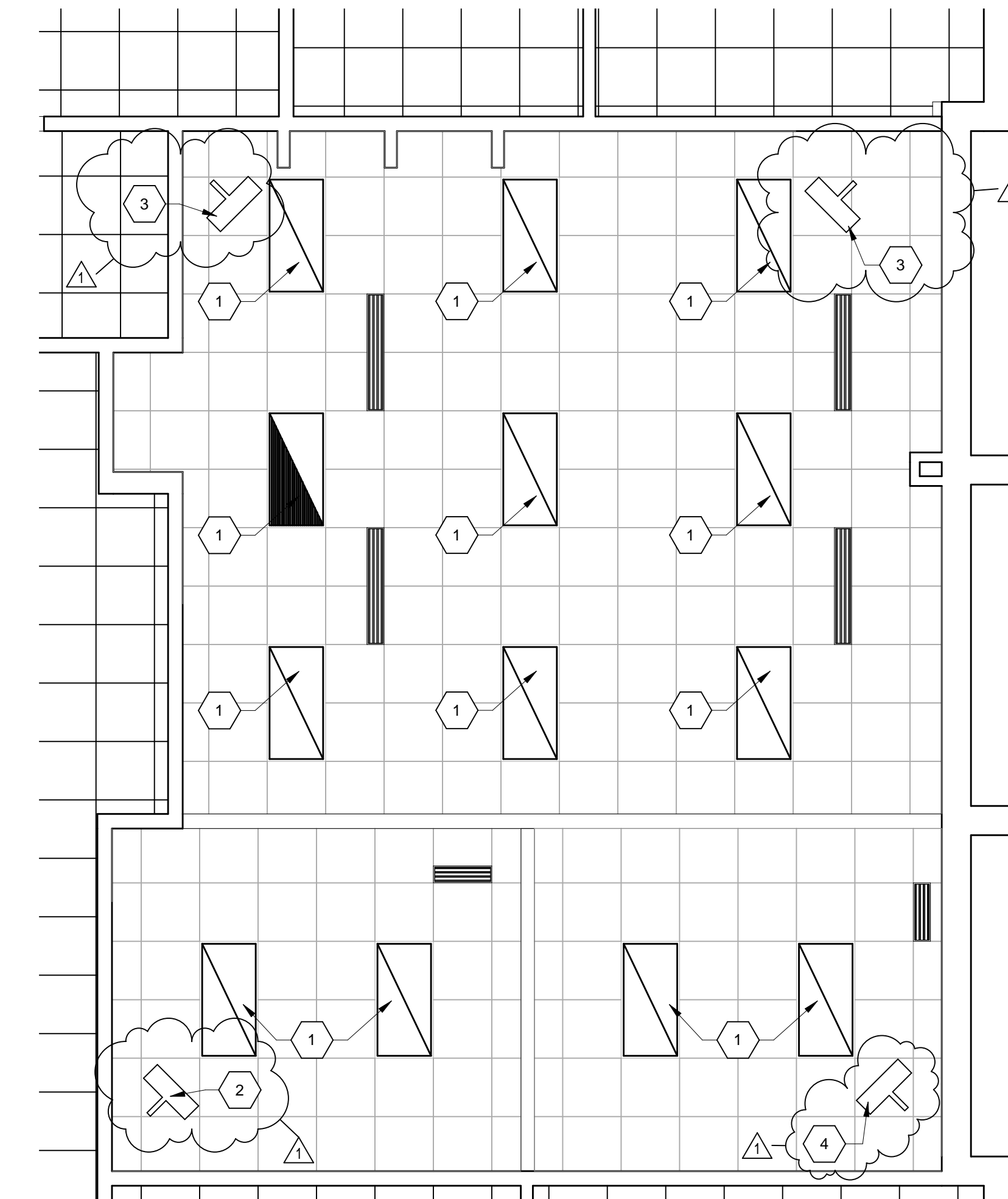
ARCHITECTURAL SPECIFICATION NOTES

- A. CONCRETE SLAB ON GRADE: 4 INCH THICK, WITH 0.6% W2, 1/2" 1 WELDED WIRE FABRIC. CONCRETE SHALL BE 3500 PSI AT 28 DAYS. COMPLY WITH ACI 301 "SPECIFICATION FOR STRUCTURAL CONCRETE", NORMAL WEIGHT CONCRETE.
- B. BELOW SLAB VAPOR BARRIER: PLASTIC VAPOR BARRIER, 15 MIL THICK, SIMILAR TO STEGO WRAP VAPOR BARRIER.
- C. DRAINAGE FILL: WASHED, NARROWLY GRADED MIXTURE OF CRUSHED STONE, OR CRUSHED OR UNCRUSHED GRAVEL, ASTM 4 446, INDOT #40 COARSE AGGREGATE.
- D. ROUGH CARPENTRY/BLOCKING: STANDARD, STUD, OR NUMBER 3 GRADE LUMBER WITH 19 PERCENT MAXIMUM MOISTURE CONTENT. PROVIDE WOOD-PRESERVATIVE-TREATED LUMBER IF BLOCKING IS IN CONTACT WITH MASONRY OR CONCRETE. PROVIDE FIRE-RETARDANT-TREATED BLOCKING IN ALL LOCATIONS.
- E. JOINT SEALANTS:
 - a. INTERIOR JOINTS IN VERTICAL SURFACES SUBJECT TO MOVEMENT: URETHANE JOINT SEALANT SIMILAR TO BASF NP1, TX1 OR ULTRA, LOCATIONS: INTERIOR JOINTS WHERE INTERIOR PARTITIONS MEET EXTERIOR WALLS.
 - b. INTERIOR JOINTS IN VERTICAL SURFACES NOT SUBJECT TO MOVEMENT: LATEX JOINT SEALANT SIMILAR TO PECORA AC-20+ SILICONE. LOCATIONS: INTERIOR JOINTS BETWEEN WALL SURFACES AND OPEN FRAMES.
 - c. MILDWEY RESISTANT INTERIOR JOINTS IN NON-PAINTED VERTICAL SURFACES AND HORIZONTAL NONTRAFFIC SURFACES SIMILAR TO PECORA AC-20+ SILICONE. LOCATIONS: JOINTS BETWEEN COUNTERTOP AND BACKSPLASHES.
 - d. EXTERIOR JOINTS, SINGLE COMPONENT, NONSAG, ASTM D320, TYPE S, GRADE NS, CLASS 100/50, FOR USE NT SIMILAR TO SIKKA, SIKASIL WS-290.
- F. GYPSUM BOARD, MOISTURE AND MOLD RESISTANT, XF WALLBOARD BY NATIONAL GYPSUM OR SIMILAR, TYPE X, 5/8 INCH THICK.
- G. METAL STUDS: ASTM C 945 20 GAUGE MINIMUM, G40 COATING, AROUND OPENINGS EXCEEDING 48 INCHES IN ANY DIMENSION, PROVIDE 16 GAUGE STUDS. FRAMING SHALL BE 16 INCHES ON CENTER AND UNBRACED LENGTH NOT EXCEEDING 16 FEET.
- H. GYPSUM BOARD FINISHING MATERIALS INCLUDED PAPER JOINT TAPE, SETTING TYPE TAPING COMPOUNDS, DRYING TYPE ALL PURPOSE JOINT COMPOUNDS. PROVIDE CORNER BEADS AND SIMILAR ACCESSORIES AS REQUIRED.
- I. GYPSUM BOARD FINISHING: LEVEL 5 FINISH, WITH SKIM COAT, UTILIZE AT WALLS SCHEDULED TO BE PAINTED WITH SEMI-GLOSS OR GLOSS FINISH AND WHERE EXISTING VINYL WALL COVERING IS REMOVED AND PAINT IS NEW SURFACE FINISH. PROVIDE LEVEL 4 FINISH ON SURFACES TO RECEIVE FLAT AND EGGSHELL PAINT. PROVIDE LEVEL 4 SURFACES TO RECEIVE NEW VINYL FABRIC WALL COVERING.
- J. RESILIENT BASE: 4 INCH HIGH, ASTM F 1881, TYPE TS OR TYPE TP, GROUP I OR GROUP II, STYLE B, COVE WITH MINIMUM THICKNESS OF 0.125 INCH. PROVIDE PREFORMED OR PRECUT CORNERS. MANUFACTURERS ARMSTRONG, JOHNSONITE OR SIMILAR.
- K. INTERIOR PAINT: GYPSUM BOARD, PRIME COAT - INTERIOR LATEX PRIMER/SEALER SIMILAR TO PPG 6-2 SPEEDHIDE QUICK DRYING LATEX SEALER, INTERMEDIATE AND TOPCOAT - INSTITUTIONAL LOW-ODOR VOC INTERIOR LATEX SIMILAR TO PPG SPEEDHIDE ZERO, 0 VOC, HORIZONTAL LOCATIONS, FLAT, VERTICAL LOCATIONS, EGGSHELL.
- L. HORIZONTAL LOUVER BLINDS: 1 INCH WIDE ALUMINUM BLINDS BY LEVELOR, HUNTER DOUGLAS, OR EQUAL, HEADRAIL WITH MANUAL LIFT AND TILT MECHANISM. PROVIDE LIFT CORDS AND MANUAL TILT OPERATOR. SIZE TO FIT OPENING, MOUNT BETWEEN JAMBS.



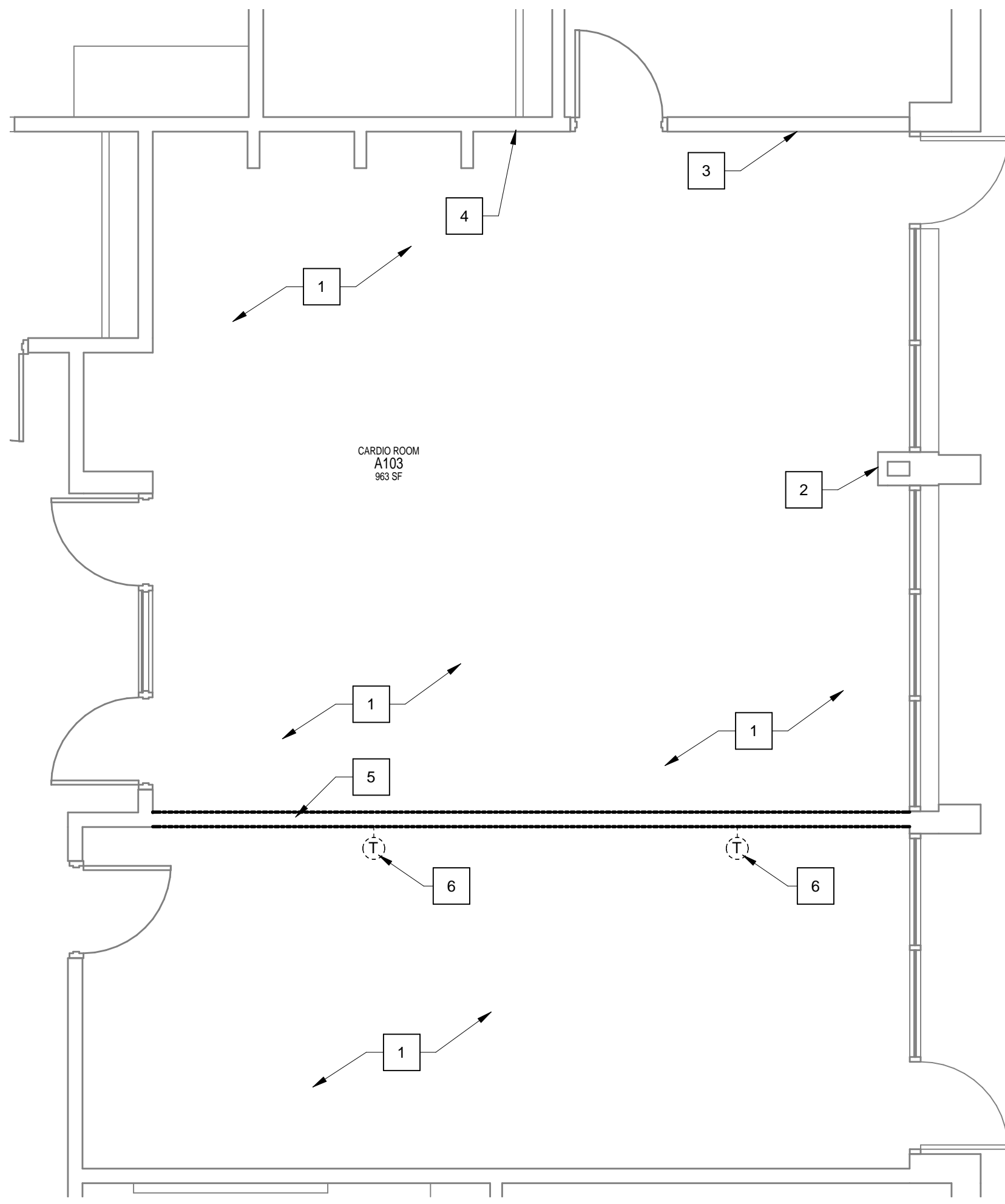
2 CARDIO ROOM REFLECTED CEILING DEMO PLAN

SCALE: 1/4" = 1'-0"



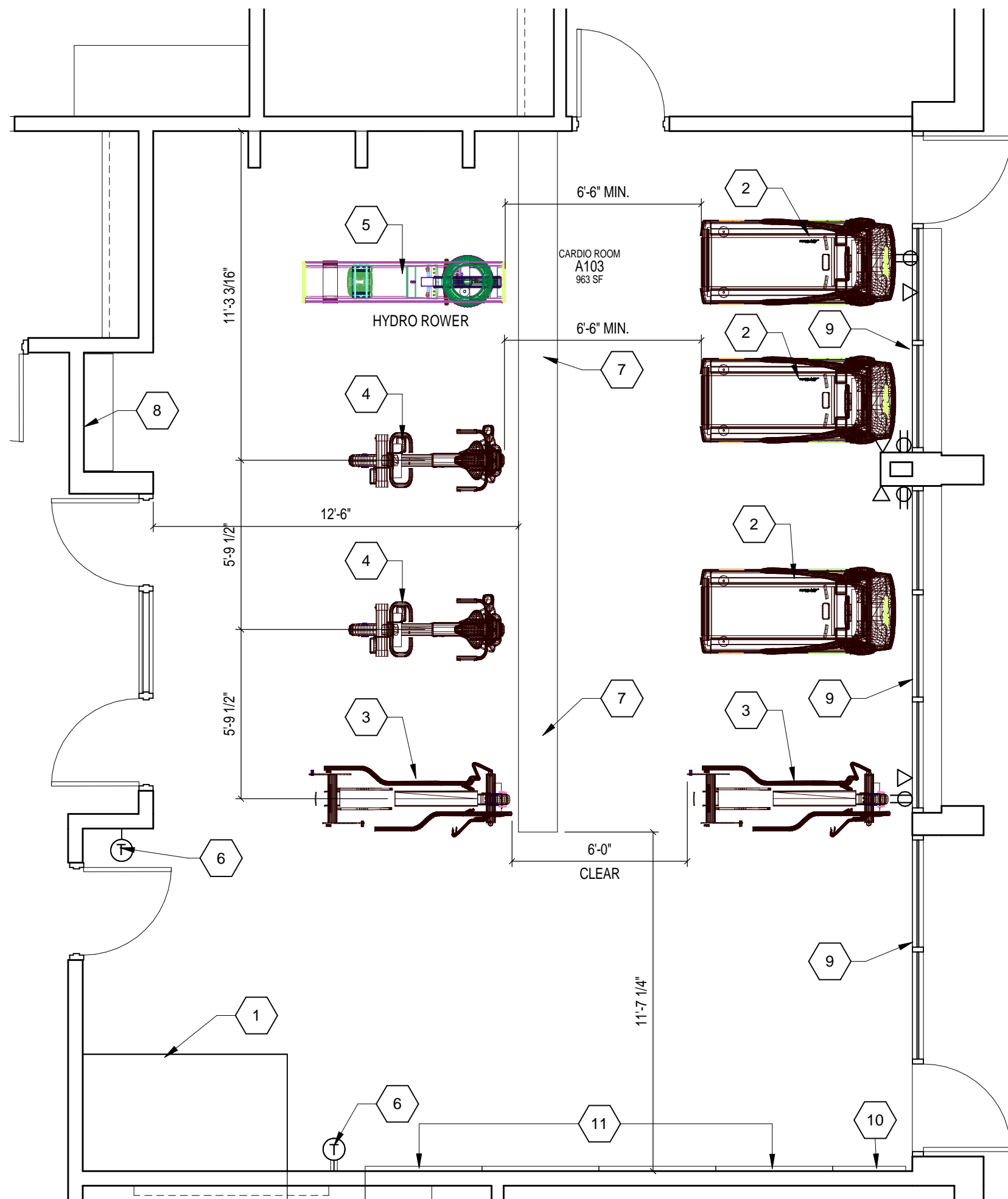
4 CARDIO ROOM REFLECTED CEILING PLAN

SCALE: 1/4" = 1'-0"



1 CARDIO ROOM DEMO PLAN

SCALE: 1/4" = 1'-0"



3 CARDIO ROOM FLOOR PLAN

SCALE: 1/4" = 1'-0"

LIST OF FINISHES

FLOOR FINISHES

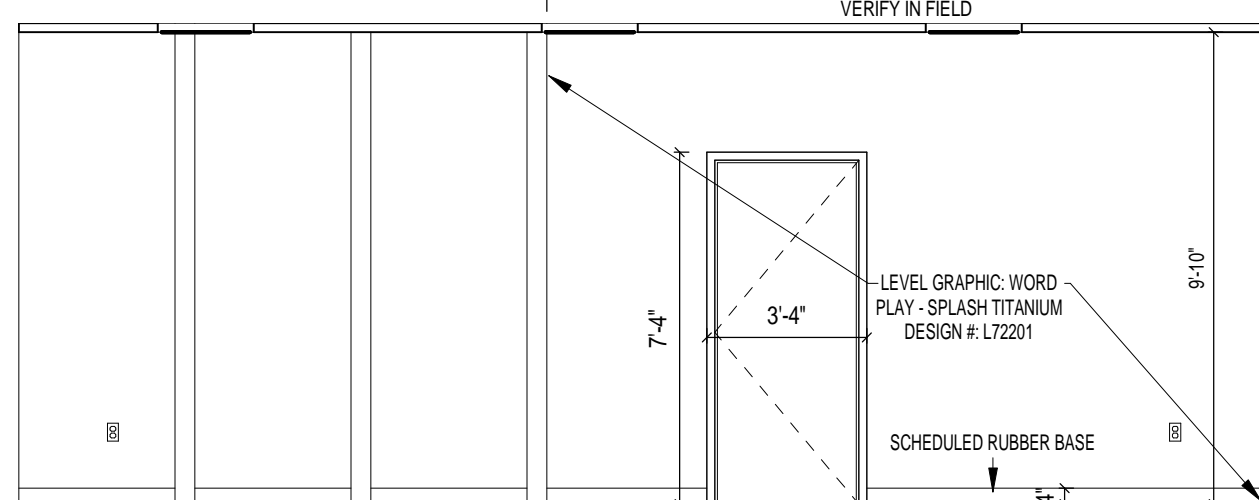
- RT-1 (RUBBER FLOOR TILE)
- MFR: NORTH WEST RUBBER
- PATTERN: REACTION
- COLOR: 612 RHINO

BASE FINISHES

- RB-1 (RESILIENT BASE)
- MFR: JOHNSONITE
- COLOR: #28 MEDIUM GRAY
- SIZE: 4"

WALL FINISHES

- P-1 (FIELD PAINT)
- MFR: SHERWIN WILLIAMS
- COLOR: TBD
- VWC-1 (DIGITAL WALL COVERING)
- MFR: LEVEL WALL GRAPHICS
- PATTERN: WORD PLAY - SPLASH TITANIUM
- DESIGN #: L72201



7 CARDIO ROOM WALL GRAPHIC ELEVATION

SCALE: 1/4" = 1'-0"

ARCHITECTURAL PLAN GENERAL NOTES

- A. WHERE DISSIMILAR FLOOR MATERIALS MEET, THEY SHALL DO SO UNDER THE CENTERLINE OF THE DOOR, UNLESS NOTED OTHERWISE.
- B. THE BASE FLOOR ELEVATION INDICATED FOR THE PROJECT IS 101.0.
- C. ALL DIMENSIONS ON FLOOR PLANS ARE TO FINISH FACE OF CMU, CONCRETE, BRICK OR FINISH FACE OF GIB AT METAL STUD WALLS, UNLESS NOTED OTHERWISE. EXCEPTION: EXTERIOR METAL STUD WALLS ARE TO FACE OF METAL STUDS.
- D. SEE REFLECTED CEILING PLANS FOR BULKHEAD LOCATIONS AND DETAIL REFERENCES.
- E. REFER TO ROOM FINISH SCHEDULE OR PLAN AND EQUIPMENT PLANS FOR LOCATION AND EXTENT OF FINISH FLOOR MATERIALS.
- F. PROVIDE WOOD BLOCKING AS REQUIRED, WITHIN METAL STUD WALLS FOR WALL MOUNTED ITEMS.

ARCHITECTURAL DEMOLITION GENERAL NOTES

- A. DEMOLITION IS TO FOLLOW ESTABLISHED CONSTRUCTION SEQUENCE. CONTRACTOR IS TO VERIFY THEIR WORK IN THE FIELD WITH THE DEMOLITION DRAWINGS, NEW CONSTRUCTION DRAWINGS, AND THE EXISTING IN-FIELD CONDITIONS. REPORT DISCREPANCIES TO THE ARCHITECT.
- B. "FLOORING" DENOTES FLOOR COVERING MATERIALS INCLUDING BACKINGS, ADHESIVES, BASES, DOWN TO BUT EXCLUSIVE OF FLOOR SLABS AND STRUCTURAL MATERIALS, UNLESS NOTED OTHERWISE.
- C. "CEILING" DENOTES CEILING MATERIALS INCLUDING SUSPENSION SYSTEMS ADHESIVE RESIDUES, MOLDINGS, UP TO BUT EXCLUSIVE OF STRUCTURAL MATERIALS.
- D. WHEN OPENINGS ARE CUT INTO AN EXISTING WALL, THE OPENING SHALL BE A MINIMUM OF 1'-4" LONGER THAN THE FINISHED OPENING REQUIRED TO ALLOW FOR 8" (MIN) OF NEW CMU TOOTHED-IN AT EDGES.
- E. AFTER THE DEMOLITION OF MATERIALS, THE RESULTING EXPOSED SURFACE SHALL BE SMOOTH AND FLUSH WITH EXISTING CONDITIONS.
- F. MECHANICAL AND ELECTRICAL ITEMS THAT ARE CAPPED AND ABANDONED SHALL BE LOCATED BEHIND FINAL FINISH SYSTEMS.
- G. COORDINATE THIS WORK WITH DEMOLITION WORK ON SITE, STRUCTURAL, PLUMBING, MECHANICAL, AND ELECTRICAL.
- H. PROVIDE INTERIOR AND EXTERIOR SHORING, BRACING, OR SUPPORT TO PREVENT MOVEMENT OR SETTLEMENT OF EXISTING STRUCTURES.
- I. CONTRACTOR TO FIELD VERIFY PORTIONS OR SECTIONS OF EXISTING WALLS TO BE FILLED IN AND SALVAGE NECESSARY MATERIAL.
- J. MATERIALS OF DEMOLITION SHALL BE DISPOSED OF OFF-SITE UNLESS OTHERWISE DIRECTED BY OWNER.
- K. OWNER TO REMOVE EXISTING FURNITURE AND MISCELLANEOUS ITEMS NOT SHOWN AND NOT TO BE DEMOLISHED. CONTRACTOR TO NOTIFY OWNER IN ADVANCE WHEN ITEMS NEED TO BE REMOVED. CONTRACTOR IS RESPONSIBLE FOR OTHER ITEMS TO BE REMOVED.
- L. ITEMS TO BE PATCHED, REMOVE ALL LOOSE OR DAMAGED MATERIAL, REFINISH TO LIKE NEW CONDITION, OR IF CONDITION WARRANTS REPLACE IN ENTIRETY.
- M. THE OWNER SHALL RESERVE RIGHT TO CLAIM ANY MATERIALS THAT ARE BEING DEMOLISHED PRIOR TO THE CONTRACTOR DISPOSING OF THEM OFF SITE.
- N. "TURNED OVER TO THE OWNER" DENOTES: 1) TAG AND IDENTIFY ITEMS; 2) STORE IN AN ORDERLY FASHION IN A LOCATION DESIGNATED BY THE OWNER.

DEMOLITION PLAN NOTES

(ALL NOTES MAY NOT BE INDICATED ON THIS SHEET)

- 1 REMOVE AND DISPOSE OF CARPET, ADHESIVE, AND RESILIENT BASE, COMPLETE. TEST RH LEVELS IN CONCRETE. PERFORM MINOR FLOOR PREP FOR NEW FLOOR FINISH.
- 2 REMOVE MIRROR AND ATTACHMENT BRACKET, COMPLETE. PATCH AND REPAIR WALL AS REQUIRED.
- 3 REMOVE CLOCK, COMPLETE. REMOVE ANY ELECTRICAL INFRASTRUCTURE BACK TO CLOSEST PANEL. PATCH AND REPAIR WALL AS REQUIRED.
- 4 CUT AND REMOVE SECTION OF GYP BOARD IN EXISTING WALL, ALLOW FOR ELECTRICAL AND DATA CONDUIT FOR SUPPLY TO NEW RACEWAY. PATCH AND REPAIR AS REQUIRED.
- 5 DEMO EXISTING WALL TO 3'-4" A.F.F., COMPLETE. REMOVE AND CAP ANY EXISTING UTILITIES BACK TO MAIN BRANCH. PERFORM MINOR FLOOR PREP FOR NEW FLOOR FINISH. INSTALL NEW RUNNER, TRACK AND GYPSUM BOARD, FINISH GYPSUM TO MATCH ADJACENT BULKHEAD.
- 6 REMOVE AND RELOCATE EXISTING THERMOSTAT TO LOCATION INDICATED ON NEW WORK PLAN. PROVIDE ALL WIRING AND TERMINATIONS FOR A FULLY FUNCTIONING SYSTEM.

DEMO REFLECTED CEILING PLAN NOTES

(ALL NOTES MAY NOT BE INDICATED ON THIS SHEET)

- 1 EXISTING LIGHT FIXTURE TO REMAIN.
- 2 EXISTING CEILING TO REMAIN.
- 3 EXISTING DIFFUSER TO REMAIN; CLEAN, DIFFUSER AND DUCTWORK AS REQUIRED.
- 4 EXISTING BULKHEAD TO REMAIN.
- 5 EXISTING CEILING MOUNTED FAN TO REMAIN.
- 6 SALVAGE EXISTING CEILING MOUNTED FAN FOR REINSTALLATION.

ARCHITECTURAL PLAN NOTES

(ALL NOTES MAY NOT BE INDICATED ON THIS SHEET)

- 1 NEW WALL MOUNTED 4'X4' THERAPY TABLE; CLINTON INDUSTRIES 243-47 WALL MOUNT FOLDING MAT THERAPY TABLE, PROVIDED AND INSTALLED BY OWNER. REMOVE GYPSUM WALL BOARD AS NECESSARY TO PROVIDE WOOD BLOCKING IN WALL AS REQUIRED FOR INSTALLATION. REPLACE GYPSUM WALL BOARD AND REFINISH.
- 2 TREADMILL, NOTE ELEVATION WITH DISCOVER, PROVIDED AND INSTALLED BY OWNER. COORDINATE WITH ELECTRICAL FOR POWER, DATA AND TELEVISION CONNECTIONS.
- 3 ELLIPTICAL CROSS-TRAINER, NOTE ELEVATION WITH DISCOVER, PROVIDED AND INSTALLED BY OWNER. COORDINATE WITH ELECTRICAL FOR POWER, DATA AND TELEVISION CONNECTIONS.
- 4 RECUMBENT BIKE, NOTE ELEVATION WITH DISCOVER, PROVIDED AND INSTALLED BY OWNER. COORDINATE WITH ELECTRICAL FOR POWER, DATA AND TELEVISION CONNECTIONS.
- 5 CYBEX HYDRO ROWER PRO GROUP-ROW-01CV, PROVIDED AND INSTALLED BY OWNER.
- 6 RELOCATED THERMOSTAT
- 7 NEW ELECTRICAL AND DATA SURFACE MOUNTED RACEWAY, COMPLETE. SEE ELECTRICAL.
- 8 NEW COAT HOOK AND SHELF UNIT MOUNTED TO WALL WITH BOTTOM OF SHELF AT 4'-0" A.F.F. UNIT TO BE MAGNUSON GROUP, DS-4H OR EQUAL.
- 9 HORIZONTAL LOUVER BLINDS: 1 INCH WIDE ALUMINUM BLINDS BY LEVELOR, HUNTER DOUGLAS, OR EQUAL. HEADRAIL WITH MANUAL LIFT AND TILT MECHANISM. PROVIDE LIFT CORDS AND MANUAL TILT OPERATOR. SIZE TO FIT OPENING, MOUNT BETWEEN JAMBS.
- 10 MIRROR: 2'-6" WIDE X 6'-0" TALL, MOUNT BOTTOM OF MIRROR AT 2'-0" A.F.F.
- 11 MIRRORS 4'-0" WIDE X 6'-0" TALL, MOUNT BOTTOM OF MIRROR AT 2'-0" A.F.F.

REFLECTED CEILING PLAN NOTES

(ALL NOTES MAY NOT BE INDICATED ON THIS SHEET)

- 1 EXISTING LIGHT FIXTURE
- 2 NEW FAN MOUNTED TO STEEL TUBE CONNECTED TO STRUCTURE ABOVE CEILING (CONNECTION TO MATCH EXISTING FAN INSTALLATION), COORDINATE WITH ELECTRICAL.
- 3 EXISTING CEILING MOUNTED FAN.
- 4 REINSTALL SALVAGED FAN THIS LOCATION. COORDINATE WITH ELECTRICAL.

FINISH PLAN NOTES

(ALL NOTES MAY NOT BE INDICATED ON THIS SHEET)

- 1 INSTALL VWC-1, DIGITAL WALL COVERING FIRST, THEN INSTALL RB-1 ON TOP.

VERIFICATION NOTE

CONTRACTOR SHALL VERIFY ALL DIMENSIONS AND CLEARANCES AND ALL EXISTING FIELD CONDITIONS BEFORE STARTING CONSTRUCTION. COMMENCEMENT OF WORK CONSTITUTES ACCEPTANCE OF CONDITIONS.

SHOULD DIFFERENT CONDITIONS BE ENCOUNTERED, CONTACT THE ARCHITECT BEFORE PROCEEDING WITH WORK.

COPYRIGHT 2021 BY FANNINGHOWEY ASSOCIATES, INC.

CARMEL LIFE & LEARNING CENTER (CLLC) CARDIO ROOM

515 E MAIN ST.
CARMEL, IN 46032

Carmel Clay Schools



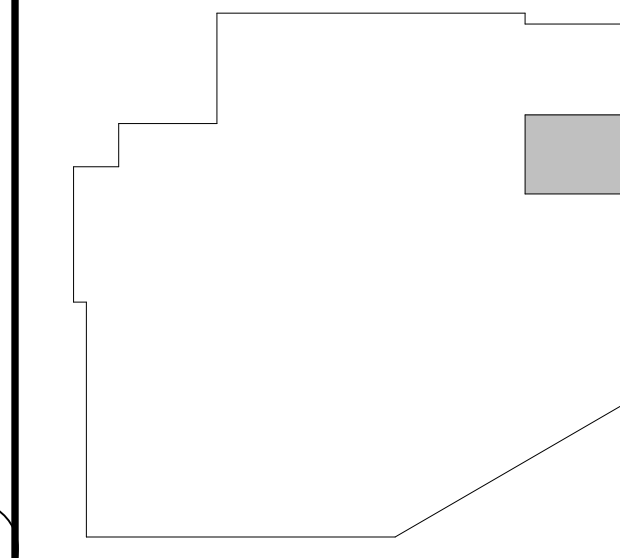
ARCHITECT



317.848.0966

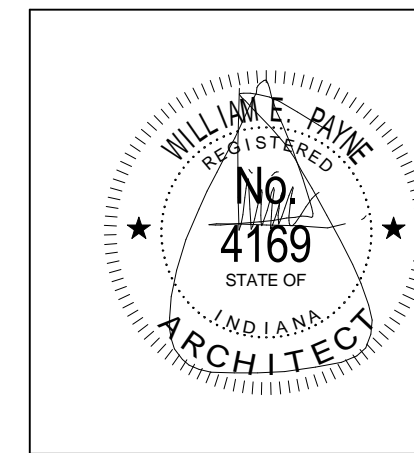
WWW.FHAI.COM

350 E NEW YORK ST. #300, IN 46204



KEY PLAN

Pricing Documents



DRAWN BY: KRS

PROJECT NUMBER: 220177.00

PROJECT ISSUE DATE: MARCH 19, 2021

REV. NO.	DESCRIPTION	DATE
1	ADDENDUM #1	6/1/21

CLLC CARDIO ROOM

A1.01