

ADDENDUM NO. 2

June 9, 2021

**Carmel Life and Learning Center HVAC Equipment Replacement
515 East Main Street
Carmel, IN 46032**

TO: ALL BIDDERS OF RECORD

This Addendum forms a part of and modifies the Bidding Requirements, Contract Forms, Contract Conditions, the Specifications and the Drawings dated March 19, 2021, by Fanning Howey Associates, Inc. Acknowledge receipt of the Addendum in the space provided on the Bid Form. Failure to do so may subject the Bidder to disqualification.

This Addendum consists of Pages ADD 2-1, Guideline Schedule, Access Points Plan, Replacement Site Logistics Plan.

A. SPECIFICATION SECTION 01 12 00 – MULTIPLE CONTRACT SUMMARY

Paragraph 3.03 Bid Categories

A. Bid Category No. 1 - HVAC Equipment Replacement

Add the following Clarifications:

1. This bid category contractor is responsible to provide the temporary 6' chain link fencing on temporary stands and gates shown on the "CLLC HVAC Equipment Replacement Site Logistics Plan". Removal/replacement of temporary fencing by contractor as required to keep the public safe (No less than daily). Contractor to remove all temporary material and restore the site at the end of the project.
2. This bid category contractor is responsible for subcontracting a qualified glazing contractor to remove and reinstall the existing aluminum storefront systems at the Carmel Life and Learning Center Door #5 as shown on the "CLLC HVAC Equipment Replacement Access Points Plan" to move equipment/material in and out of the building.

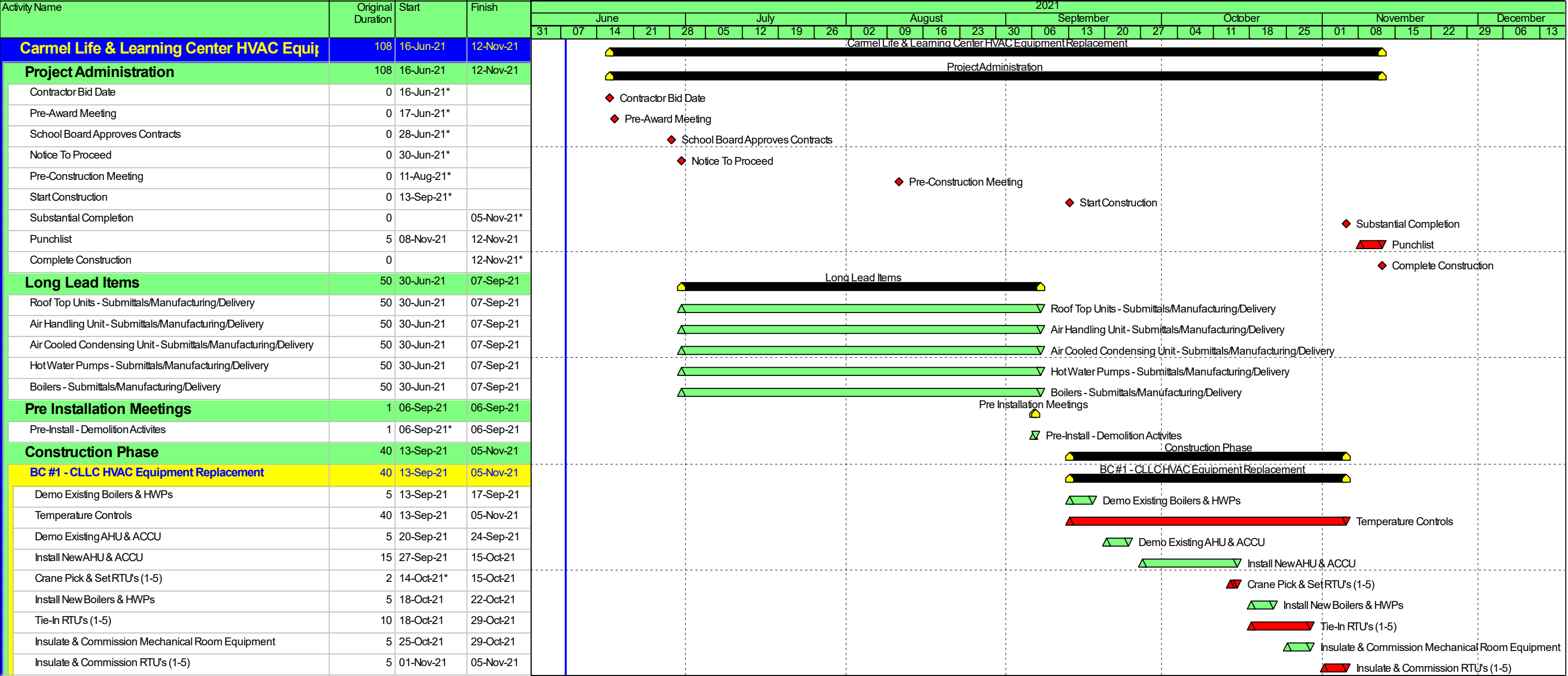
3. This bid category contractor is responsible for providing a temporary exterior wood framed and sheathed barrier with doors at Door #5 as shown on the “CLLC HVAC Equipment Replacement Access Points Plan” to restrict public access into the building when the aluminum storefront system is removed.
4. This bid category contractor is responsible for protecting all existing interior walls, floors, ceilings, and equipment scheduled to remain per the bid documents at Carmel Life and Learning Center. Repair of all damages is the responsibility of the contractor.
5. This bid category contractor is responsible for protecting all existing exterior sidewalks, pavement, and landscaping scheduled to remain per the bid documents at Carmel Life and Learning Center. Repair of all damages is the responsibility of the contractor.
6. This bid category contractor is required to have fire alarm and fire protection contractors on call at all times for damages, shutdowns, and tests during construction at Carmel Life and Learning Center.
7. This bid category contractor is required to provide the necessary equipment, cleaning labor, and materials to control the dust and fumes caused from demolition and construction at Carmel Life and Learning Center.
8. This bid category contractor is required to notify The Skillman Corporation 48 hours in advance of any disruptions of power/fire alarm/fire protection/HVAC/plumbing systems.
9. All information and dimensions shown in the “CLLC HVAC Equipment Replacement Access Points Plan” to be verified by this bid category contractor.
10. This bid category contractor is responsible for providing dumpsters and the removal of rubbish for all work outlined in the construction documents for the duration of the project.
11. This bid category contractor is responsible for all crane work to be complete from October 14th through October 16th, 2021 (Carmel Clay Schools – Fall Break).

B. SPECIFICATION SECTION 01 32 00 – SCHEDULES AND REPORTS

Paragraph 1.03 – Guideline Schedule

Add the following Paragraph:

- C. Contractor shall include the necessary manpower and overtime in the base bid in order to meet the durations outlined in the Guideline Schedule and maintain the overall completion of each phase of the project.



CARMEL CLAY
SCHOOLS

PROJECT
#220100.13

CLLC HVAC
EQUIPMENT
REPLACEMENT

SITE LOGISITICS
PLAN



The SKILLMAN Corporation
Project Administration
Construction Management



CARMEL CLAY
SCHOOLS

PROJECT
#220100.13

CLLC HVAC
EQUIPMENT
REPLACEMENT
ACCESS POINTS



The SKILLMAN Corporation
Project Administration
Construction Management



CARMEL LIFE AND LEARNING CENTER
EXTERIOR ACCESS POINT – DOOR #5

CARMEL CLAY
SCHOOLS

PROJECT
#220100.13

CLLC HVAC
EQUIPMENT
REPLACEMENT
ACCESS POINTS



The SKILLMAN Corporation
Project Administration
Construction Management



CARMEL LIFE AND LEARNING CENTER
INTERIOR ACCESS AREA – DOOR #5

CARMEL CLAY
SCHOOLS

PROJECT
#220100.13

CLLC HVAC
EQUIPMENT
REPLACEMENT
ACCESS POINTS

CARMEL LIFE AND
LEARNING CENTER
MECHANICAL
ROOM ENTRANCE



The SKILLMAN Corporation
Project Administration
Construction Management

