

ADDENDUM NO. 1

October 11, 2021

**Fort Ben Branch Library Project
9330 East 56th Street
Lawrence, IN 46216**

TO: ALL BIDDERS OF RECORD

This Addendum forms a part of and modifies the Bidding Requirements, Contract Forms, Contract Conditions, and the Drawings and Specifications dated September 24, 2021, by Ratio. Acknowledge receipt of the Addendum in the space provided on the Bid Form. Failure to do so may subject the Bidder to disqualification.

This Addendum consists of Pages ADD 1-1 and Drawing Sheets: G-001 and G-002.

PRE-BID MEETING

The Pre-Bid on Thursday, October 14, 2021, at 2:00PM will be an **in-person meeting** located at:

The Indianapolis Public Library
2450 N. Meridian Street
Indianapolis, IN 46208

All bidders are strongly encouraged to attend the Pre-Bid Meeting in person.

The Microsoft Teams Virtual Pre-Bid Meeting option is also available at:

Join on your computer or mobile app

[Click here to join the meeting](#)

Or call in (audio only)

[+1 317-762-3960,,594041715#](#) United States, Indianapolis

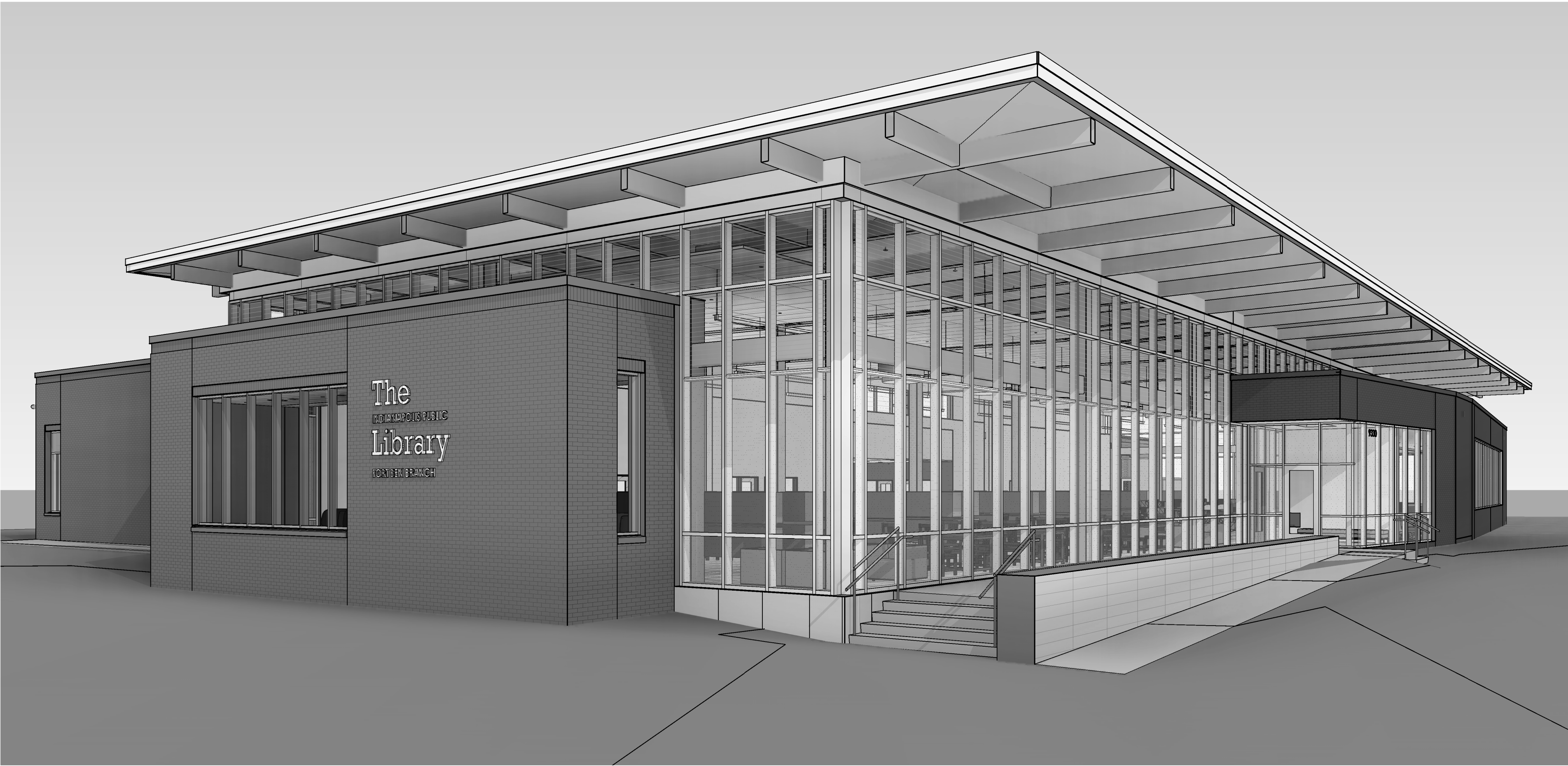
Phone Conference ID: 594 041 715#

[Find a local number](#) | [Reset PIN](#)

IndyPL Fort Ben Branch Library

Indianapolis, IN

RATIO



PACKAGE

SEAL | DATE

100% CONSTRUCTION SET

OWNER
**THE INDIANAPOLIS
PUBLIC LIBRARY**

2450 North Meridian Street
Indianapolis, Indiana 46208
(317)-275-4100



ARCHITECT
RATIO
101 South Pennsylvania Street
Indianapolis, Indiana 46204
(317)-633-4040

STRUCTURAL ENGINEER
**LYNCH, HARRISON &
BRUMLEVE, INC.**
550 Virginia Avenue
Indianapolis, Indiana 46203
(317)-423-1550

MECHANICAL / ELECTRICAL ENGINEER
LOFTUS ENGINEERING, INC.
201 South Capitol Avenue, Suite 310
Indianapolis, Indiana 46225
(317)-352-5822

CIVIL ENGINEER
THE SCHNEIDER CORPORATION
Historic Fort Harrison
8901 Otis Avenue
Indianapolis, Indiana 46216
(317)-600-4545

ACOUSTICAL / AV CONSULTANT
DESIGN 27
1650 E. 49th Street
Indianapolis, Indiana 46205
(317)-536-8000

CONSTRUCTION MANAGER AS CONTRACTOR
THE SKILLMAN CORPORATION
3834 S. Emerson Ave.
Indianapolis, Indiana 46203
(317)-783-6151

DAVIS & ASSOCIATES, INC.
2852 N. Webster Ave.
Indianapolis, Indiana 46219
(317)-263-9947

VOLUME

1

RATIO PROJECT NO.

18005.000

OWNER PROJECT NO.

--

DATE

PROJECT ADDRESS

9330 E. 56th Street
Indianapolis, IN 46216

PROJECT NAME

IndyPL Fort Ben Branch Library

RATIO

SET NO.

VOLUME

1

DATE

PACKAGE

100% CONSTRUCTION SET

RATIO PROJECT NO.

18005.000

GENERAL LIFE SAFETY PLAN NOTES

- A. REFER TO SHEET G-002 FOR CODE SUMMARY.
B. REFER TO DOOR SCHEDULE FOR REQUIRED DOOR RATING.
C. REFER TO INTERIOR PARTITION TYPES AND FLOOR PLAN FOR ADDITIONAL PARTITION REQUIREMENTS INCLUDING WALL HEIGHT, UL DESIGN, AND FIRE RATING.
D. REFER TO SITE PLAN FOR BUILDING ADJACENCIES AND PROPERTY LINES.
E. REFER TO FLOOR PLANS FOR FIRE EXTINGUISHER LOCATIONS.

OCCUPANT LOAD SCHEDULE	
FLOOR LEVEL	OCCUPANT LOAD
FIRST LEVEL	505
	505

TRAVEL DISTANCE SCHEDULE	
EXIT ROUTE	DISTANCE
TRAVEL DIST. A	98' - 3"
TRAVEL DIST. B	80' - 5"
TRAVEL DIST. C	67' - 0"

LIFE SAFETY PLAN LEGEND

- RM NAME** → ROOM NAME, AREA & OCCUPANT CAPACITY
150 SF
20
- EXIT DIRECTION ARROW
45 → EXIT POPULATION
120 → EXIT CAPACITY (POPULATION)
- → PATH OF TRAVEL
- FIRE RATED WALL
RATING REQUIRED: .30-MIN, 1-HR, 2-HR, ETC.
- SMOKE BARRIER
RATING IF REQUIRED: 1-HR, 2-HR, ETC.
- FIRE RATED WALL
PATTERN INDICATES CODE REQUIRED SEPARATION AS NOTED
- FIRE SEPARATION AND OTHER ANNOTATION SO NOTED
- FIRE RATED CEILING, RATING AS NOTED... 1-HR, 2-HR, ETC.

CODE SUMMARY

Applicable Codes:	2014 Indiana Building Code 2014 Indiana Mechanical Code 2014 Indiana Fire Code 2012 Indiana Plumbing Code 2009 Indiana Electrical Code 2010 Indiana Energy Conservation Code 2009 ICC A-117.1 Standard NFPA 13, 2010 Edition NFPA 72, 2010 Edition Indiana General Administrative Rules (GAR)
Building Description:	The proposed 1-story building consists of steel frame construction, approximately 22,063 sq. ft. The building is Type V-B Construction and is provided with sprinkler protection throughout.
Project Scope:	The project involves construction of a new 1-story branch library. The approximately 22,063 sq. ft. building will include a community meeting room, small group study rooms, book stacks, seating, as well as staff support and mechanical spaces.
Occupancy Classifications:	Library spaces and meeting rooms with an occupant load of 50 or more - A-3 Occupancy [303.4] Office and administrative space, assembly functions with an occupant load of less than 49 each, including accessory library spaces, conference rooms and similar spaces - B Occupancy [304.1, 303.1.2]
Code Strategies:	The project is designed as Type V-B Construction, nonseparated occupancies.
Variance Request:	N/A
Construction Type:	Type V-B Construction required based upon allowable area for nonseparated A-3 and B Occupancies
Occupancy Separations:	Not required based upon evaluation as nonseparated occupancies [506.3]
Allowable Area for Type V-B Construction:	28,500 sq. ft. permitted for Type V-B Construction with automatic sprinkler increase and frontage area increase - actual size 22,063 sq. ft., 6,000 sq. ft. * 300% = 18,000 sq. ft. [506.3 - Sprinkler Increase] 674 foot frontage / 674 foot total perimeter = 1.0 (Entire building perimeter fronts open space or public way greater than 20 feet). 1 - 0.25 = 0.75 0.75 * 30/30 = 0.75 6,000 * 0.75 = 4,500 [506.2 - Frontage]
Allowable Height for Type V-B Construction:	1 story permitted (40 feet), 1 story above grade plane actual (24 feet). [504.2]
Building Elements for Type V-B Construction:	Structural frame: 0 hours [Table 601] Structural frame supporting roof: 0 hour Floor assembly: 0 hours Roof assembly: 0 hour Exterior nonbearing walls: 0 hours [Table 602]
Shaft Enclosures / Floor Penetrations:	Plenum-rated cabling and data required in access floor system and plenum ceiling spaces. [703.5 & IMC 602]
Elevator Hoistways:	N/A - no elevators included in this project.
Incidental Uses:	Boiler/Mechanical rooms with boilers over 15 psi are required to be separated with a nonrated separation consisting of wall construction to the deck, and self-closing doors [Table 509]
Egress Corridors:	Corridors are permitted to be of nonrated construction throughout, based upon sprinkler protection [Table 1016.1]
Exit Travel Distance:	Exit access travel distance is permitted to be a maximum of 250 feet for A Occupancies, and 300 feet for B Occupancies [Table 1016.1]
Common Path of Travel:	The common path of travel is permitted to be a maximum of 75 feet for A Occupancies, and 100 feet for B Occupancies [1014.3]
Panic Hardware:	Panic hardware is required for A Occupancy spaces Panic hardware is not required for B Occupancy spaces [1008.1.10] Panic hardware required in main electrical room if electrical service is greater than or equal to 1,200A. [1008.1.10]
Sprinkler System:	NFPA 13 sprinkler system to be provided throughout the building.
Fire Alarm System:	Voice alarm system is not required based upon a total occupant load of less than 1,000 in A-occupancy. Manual pull stations are not required based upon automatic sprinkler initiation of the system. No fire pump is anticipated. [907.2.1, etc]
Smoke Detectors:	A fire alarm system will be provided for A-3 occupancy with an occupant load of 300 or more people. [903.2.1.3] Smoke detectors required in HVAC return per Mechanical Code. [IMC 606.1]

DRAWING INDEX

Sheet #	Sheet Name
M504	MECHANICAL DETAILS
GENERAL	
G-001	COVER
G-002	SHEET INDEX, PROJ LOCATION, CODE SUMMARY AND LIFE SAFETY PLAN
1 OF 2	MINOR PLAT
2 OF 2	MINOR PLAT
CIVIL	
C101	SITE GRADING PLAN
C102	SITE UTILITY PLAN
C103	STORMWATER POLLUTION PLAN
C104	EMERGENCY ROUTING PLAN
C601	STORM SEWER PLAN AND PROFILES
C602	STORM SEWER PLAN AND PROFILES
C603	STORM SEWER PLAN AND PROFILES
C801	STORMWATER POLLUTION PREVENTION SPECIFICATIONS AND DETAILS
C802	STORMWATER POLLUTION PREVENTION INDEX
C803	GENERAL DETAILS
C804	CITY OF LAWRENCE DETAILS
C805	CITY OF LAWRENCE DETAILS

LANDSCAPE

L-201	SITE FEATURES PLAN
L-501	PLANTING PLAN
L-701	SITE DETAILS
L-702	SITE DETAILS
L-703	SITE DETAILS
L-704	SITE DETAILS
L-705	SITE DETAILS

STRUCTURAL

S-001	GENERAL STRUCTURAL NOTES
S-002	GENERAL STRUCTURAL NOTES & SCHEDULES
S-101	FOUNDATION PLAN
S-102	LOWER ROOF FRAMING PLAN
S-103	UPPER ROOF FRAMING PLAN
S-301	BRACING ELEVATIONS
S-401	TYPICAL DETAILS
S-402	TYPICAL DETAILS
S-403	TYPICAL DETAILS
S-404	TYPICAL DETAILS
S-601	FOUNDATION SECTIONS AND DETAILS
S-701	FRAMING SECTIONS AND DETAILS
S-711	FRAMING SECTIONS AND DETAILS

ARCHITECTURAL

A-001	GENERAL NOTES, SYMBOLS, AND STANDARD MOUNTING HEIGHTS
A-002	INT. PARTITION TYPES, STAND. PARTITION DETAILS, FINISH SCHEDULE
A-101	FIRST FLOOR PLAN
A-102	CLERESTORY PLAN - LOWER ROOF PLAN
A-105	UPPER ROOF PLAN
A-131	FIRST FLOOR REFLECTED CEILING PLAN
A-151	FIRST FLOOR FINISH PLAN
A-161	FURNITURE PLAN - FOR REFERENCE ONLY
A-171	COLLECTION PLAN - FOR REFERENCE ONLY
A-201	EXTERIOR ELEVATIONS
A-301	BUILDING SECTIONS
A-302	BUILDING SECTIONS
A-321	WALL SECTIONS
A-322	WALL SECTIONS

DRAWING INDEX (CONT)

Sheet #	Sheet Name
A-323	WALL SECTIONS
A-324	WALL SECTIONS
A-325	WALL SECTIONS
A-351	EXTERIOR DETAILS
A-352	EXTERIOR DETAILS
A-353	EXTERIOR DETAILS
A-401	ENLARGED PLANS
A-402	ENLARGED PLANS - RESTROOMS
A-411	PLAN DETAILS
A-501	INTERIOR ELEVATIONS
A-502	INTERIOR ELEVATIONS
A-503	INTERIOR ELEVATIONS
A-521	INTERIOR DETAILS
A-522	INTERIOR DETAILS
A-523	INTERIOR DETAILS
A-524	INTERIOR DETAILS
A-601	DOOR SCHEDULE AND DETAILS
A-611	EXTERIOR FRAME ELEVATIONS
A-910	SIGNAGE TYPES - FOR REFERENCE ONLY

PLUMBING

P200	UNDERFLOOR PLUMBING PLAN
P201	FIRST FLOOR PLUMBING PLAN
P501	PLUMBING SCHEDULES & DETAILS
P601	PLUMBING ISOMETRICS

MECHANICAL

MP001	MECHANICAL / PLUMBING SYMBOLS & ABBREVIATIONS
M201	FIRST FLOOR MECHANICAL PLAN
M301	FIRST FLOOR MECHANICAL PIPING PLAN
M401	ENLARGED MECHANICAL ROOM PLAN
M501	MECHANICAL DETAILS
M502	MECHANICAL DETAILS
M503	MECHANICAL DETAILS
M601	PIPING AND INSTRUMENTATION DIAGRAMS
M602	HVAC INSTRUMENTATION AND CONTROL SCHEMATICS
M603	HVAC INSTRUMENTATION AND CONTROL SCHEMATICS
M604	CONTROL SCHEMATICS
M701	MECHANICAL SCHEDULES

ELECTRICAL

E001	ELECTRICAL SYMBOLS & ABBREVIATIONS
ES101	SITE ELECTRICAL
E102	ELECTRICAL GROUNDING PLAN
E201	FIRST FLOOR LIGHTING PLAN
E301	FIRST FLOOR POWER PLAN
E401	FIRST FLOOR SYSTEMS PLAN
E501	ELECTRICAL DETAILS
E502	ELECTRICAL DETAILS
E503	ELECTRICAL DETAILS
E504	ELECTRICAL DETAILS
E505	ELECTRICAL DETAILS
E601	ELECTRICAL ONE-LINE DIAGRAM
E602	ELECTRICAL GROUNDING DIAGRAM
E701	ELECTRICAL SCHEDULES
E702	ELECTRICAL SCHEDULES
E801	LUMINAIRE SCHEDULE

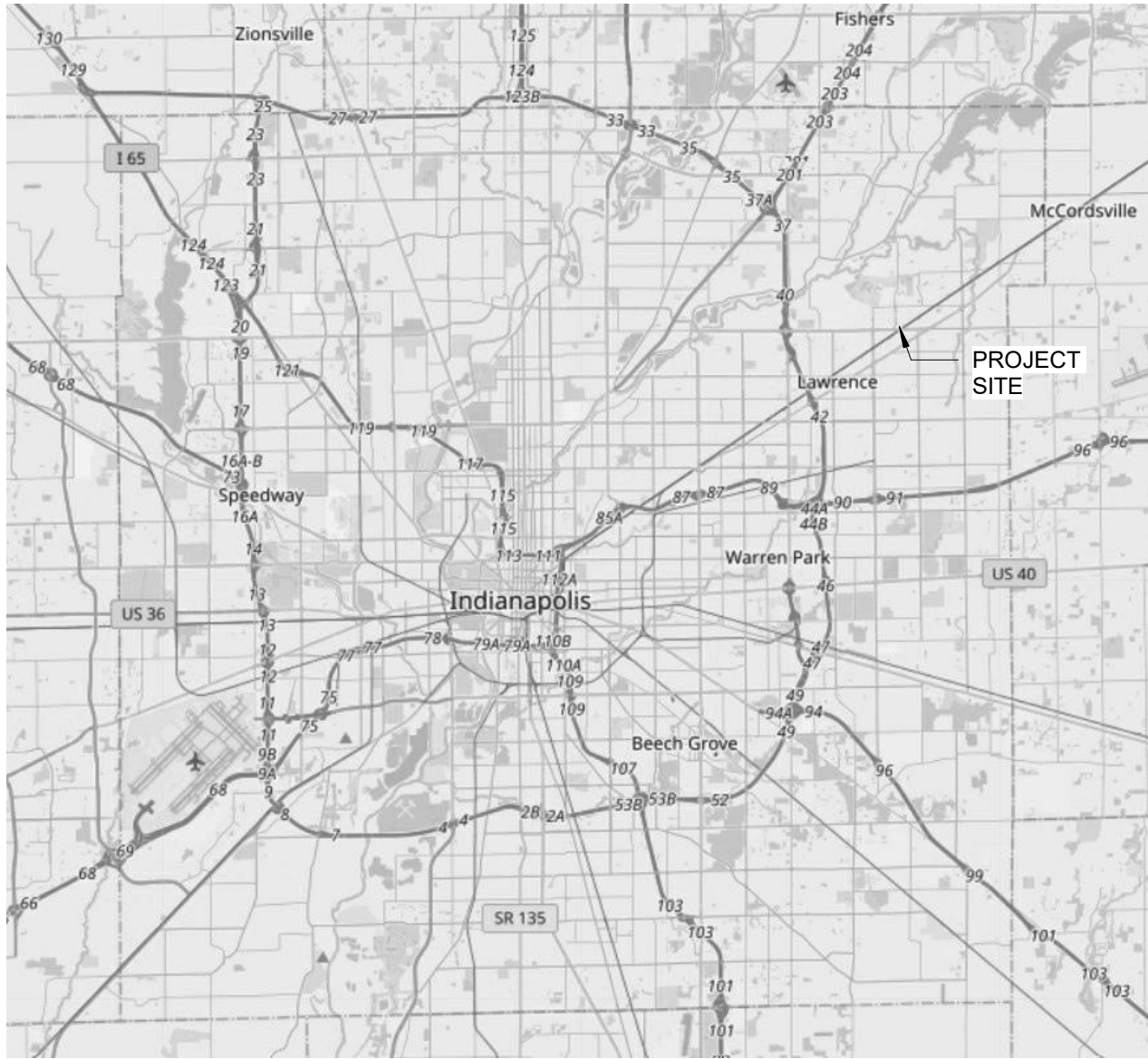
TELECOMMUNICATIONS

T001	SECURITY SITE PLAN
T100	FIRST FLOOR DISTRIBUTION PLAN
T200	FIRST FLOOR TELECOM PLAN
T300	TELECOM DIAGRAMS
T301	ENLARGED TR LAYOUT / ELEVATIONS
T302	AV DIAGRAMS / ELEVATIONS
T400	TELECOM DETAILS
T401	TELECOM DETAILS
T402	SECURITY DETAILS

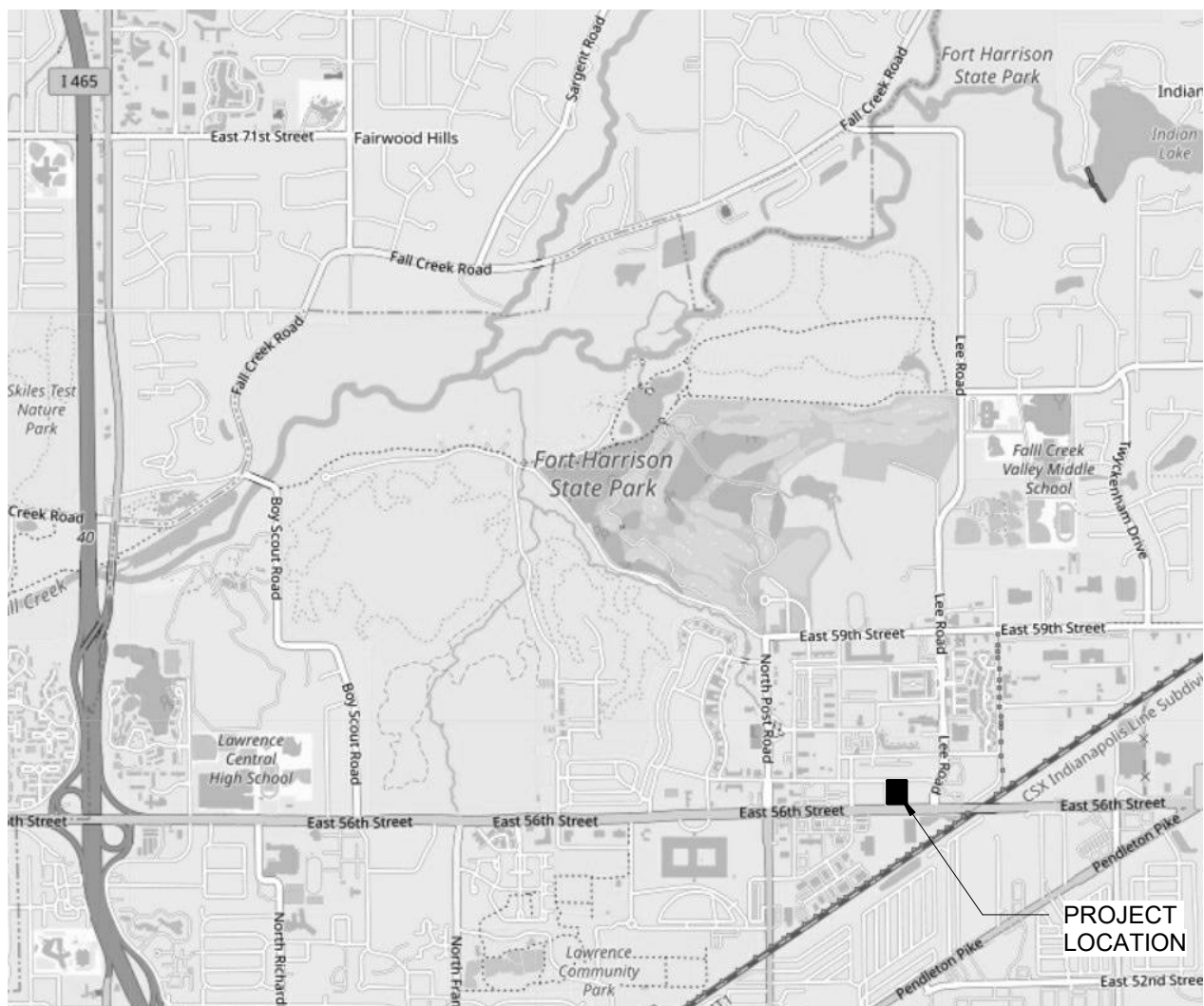
GENERAL PROJECT NOTES

- A. THE FOLLOWING GENERAL NOTES APPLY TO THESE CONTRACT DOCUMENTS AND ARE NOT SPECIFIC TO ANY ONE DISCIPLINE.
- B. IT IS THE CONTRACTOR'S RESPONSIBILITY TO REVIEW AND COORDINATE THE WORK OF ALL SUB-CONTRACTORS, TRADES AND SUPPLIERS WITH THE REQUIREMENTS OF THE CONTRACT BEFORE COMMENCING CONSTRUCTION, AND TO ASSURE THAT ALL PARTIES ARE AWARE OF ALL REQUIREMENTS REGARDLESS OF WHERE THE REQUIREMENTS OCCUR IN THE CONTRACT DOCUMENTS, WHICH MIGHT AFFECT THE WORK OF THAT PARTY.
- C. PARTIAL SETS OF DRAWINGS ARE INCOMPLETE AND SHOULD NOT BE DISTRIBUTED OR UTILIZED BY THE CONTRACTOR.
- D. THE CONSTRUCTION DOCUMENTS ESTABLISH DETAILED MINIMUM REQUIREMENTS FOR THE CONSTRUCTION OF THE PROJECT.
- E. THE GENERAL NOTES, SYMBOLS AND DEFINITIONS APPLICABLE ONLY TO EACH DISCIPLINE CAN BE FOUND AT THE FRONT OF EACH DISCIPLINE'S PORTION OF THE SET OF DRAWINGS AND IS LISTED AS PART OF THE OVERALL PROJECT INDEX OF DRAWINGS.
- F. BASIC FIRE PROTECTION AND THE EXTINGUISHING SCHEME ARE ILLUSTRATED BY THE LIFE SAFETY PLAN(S) AND APPLICABLE FIRE AND BUILDING CODE SUMMARY ON SHEET G-002.
- G. THE ARCHITECTURAL DRAWINGS ESTABLISH, COORDINATE, AS WELL AS TAKE PRECEDENCE FOR THE FINISH APPEARANCE OF ALL EXPOSED ELEMENTS OF THE WORK OF ALL TRADES INCLUDING THAT WORK WHICH IS ILLUSTRATED PRIMARILY ON DRAWINGS OF OTHER DISCIPLINES. IF THERE IS A DISCREPANCY IN THE NUMBER OF FIXTURES, DEVICES, ETC. SHOWN ON ARCHITECTURAL DOCUMENTS AND THE DOCUMENTS OF OTHER DISCIPLINES, CONTRACTOR'S PRICING SHALL ACCOUNT FOR THE GREATER QUANTITY SHOWN.
- H. THE DRAWINGS MAY MAKE REFERENCE TO AND/OR ILLUSTRATE ITEMS WHICH ARE NOT PART OF THE WORK OF THE CONTRACT. THESE NOT-IN-CONTRACT ITEMS ARE REFERENCED AND/OR ILLUSTRATED FOR THE CONTRACTOR'S REFERENCE, INFORMATION, AND COORDINATION ONLY.
- I. THE CONTRACTOR IS RESPONSIBLE TO COMPLY WITH APPLICABLE LAWS, CODES, REGULATIONS, AND ORDINANCES OF THE PLACE (CITY, COUNTY, DISTRICT AND STATE) WHERE THE PROJECT IS LOCATED. SUCH REQUIREMENTS MAY NOT BE REFLECTED BY THESE CONTRACT DOCUMENTS.
- J. EXISTING CONDITIONS SHOWN ARE FROM AVAILABLE RECORD DRAWINGS AND/OR VISUAL FIELD SURVEYS. THE CONTRACTOR SHALL VERIFY ACTUAL EXISTING CONDITIONS AT THE SITE PRIOR TO SUBMITTING A BID. THE CONTRACTOR SHALL NOTIFY THE ARCHITECT OF ANY DISCREPANCIES.
- K. THE CONTRACTOR SHALL OBTAIN ALL REQUIRED PERMITS AND SIMILAR RELEASES REQUIRED FOR THE CONSTRUCTION AND OCCUPANCY OF THE PROJECT. THE CONTRACTOR SHALL FURNISH COPIES OF ALL SUCH ITEMS TO THE OWNER AND ARCHITECT WITHIN 10 DAYS OF RECEIPT OF SUCH ITEMS. IF PERMITS ARE ISSUED SUBJECT TO CERTAIN CONDITIONS OR REVISIONS TO THE WORK OR IF PERMITS ARE DELAYED FOR ANY REASON, THE CONTRACTOR SHALL NOTIFY THE OWNER AND ARCHITECT.
- L. THE CONTRACTOR SHALL TAKE PRECAUTIONS TO MAINTAIN AND PROTECT NEW WORK AS WELL AS EXISTING SYSTEMS AND ELEMENTS WHICH ARE TO REMAIN. ANY DAMAGE TO SUCH SYSTEMS AND ELEMENTS SHALL BE IMMEDIATELY REPAIRED IN A MANNER ACCEPTABLE TO THE ARCHITECT. IF SATISFACTORY REPAIRS CANNOT BE MADE, THE CONTRACTOR SHALL REPLACE SYSTEMS AND ELEMENTS WITH LIKE NEW QUALITY ACCEPTABLE TO THE ARCHITECT. ALL REPAIRS AND REPLACEMENT COST SHALL BE THE FINANCIAL RESPONSIBILITY OF THE CONTRACTOR.
- M. THE CONTRACTOR SHALL PROVIDE KNOX BOX(ES) AS REQUIRED BY LOCAL FIRE DEPARTMENT AND OTHER AUTHORITIES HAVING JURISDICTION (AHJ). ARCHITECT'S PROPOSED LOCATION IS IDENTIFIED IN LIFE SAFETY PLAN, CONFIRM FINAL LOCATION(S) WITH FIRE DEPARTMENT, AHJ AND ARCHITECT BEFORE INSTALLATION. KNOX BOXES MAY BE REQUIRED AT MORE THAN ONE ENTRANCE.

REGION MAP



PROJECT LOCATION



IndyPL Fort Ben Branch Library
9330 E. 56th Street
Indianapolis, IN 46216

Owner
The Indianapolis Public Library
2450 North Meridian Street
Indianapolis, IN 46208
(317)-275-4100

Architect
RATIO
101 South Pennsylvania Street
Indianapolis, Indiana 46204
317-633-4040

Structural Engineer
LYNCH, HARRISON & BRUMLEVE, INC.
550 Virginia Avenue
Indianapolis, Indiana 46203

Mechanical / Electrical Engineer
LOFTUS ENGINEERING, INC.
201 South Capitol Avenue, Suite 310
Indianapolis, Indiana 46225
(317)-352-5822

Civil Engineer
THE SCHNEIDER CORPORATION
Historic Fort Harrison
8901 Otis Avenue
Indianapolis, Indiana 46216
(317)-826-7100

Acoustical / AV Consultant
DESIGN 27
1650 E. 49th Street
Indianapolis, Indiana 46205
(317)-536-8000

The INDIANAPOLIS PUBLIC Library

SEAL | DATE

SHEET ISSUE
1 100% CONSTRUCTION SET 09/24/2021

RATIO

PROJECT NO. 18005.000
SHEET TITLE
SHEET INDEX, PROJ LOCATION, CODE SUMMARY AND LIFE SAFETY PLAN
SHEET NUMBER

G-002