

ADDENDUM NO. 4

November 1, 2021

**Fort Ben Branch Library Project
9330 East 56th Street
Lawrence, IN 46216**

TO: ALL BIDDERS OF RECORD

This Addendum forms a part of and modifies the Bidding Requirements, Contract Forms, Contract Conditions, and the Drawings and Specifications dated September 24, 2021, by Ratio Architects, Inc. Acknowledge receipt of the Addendum in the space provided on the Bid Form. Failure to do so may subject the Bidder to disqualification.

This Addendum consists of Page ADD 4-1 and attached Ratio Architects, Inc. Addendum No. 4 dated November 1, 2021, consisting of 2 pages, and Drawing Sheets: L-201, L-501 and L-702.

ADDENDUM NO. 4

DATE: 11 / 01 / 2021

PROJECT: FORT BENJAMIN HARRISON BRANCH
INDIANAPOLIS PUBLIC LIBRARY
LAWRENCE, INDIANA

RATIO PROJECT NUMBER: 18005.000

OWNER:

INDIANAPOLIS PUBLIC LIBRARY
INDIANAPOLIS, IN
2450 North Meridian Street
Indianapolis, IN 46208
(317) – 275-4100

ARCHITECT / LANDSCAPE ARCHITECT: RATIO ARCHITECTS, INC.

101 South Pennsylvania Street
Indianapolis, Indiana 46204-3684
Phone: (317) 633-4040
Fax: (317) 633-4153

STRUCTURAL ENGINEER:

Lynch, Harrison, & Brumleve, Inc
550 Virginia Avenue
Indianapolis, IN 46203
Phone: (317)-423-1550

MECHANICAL/ELECTRICAL ENGINEER:

Loftus Engineering, Inc.
201 South Capitol Avenue, Suite 310
Indianapolis, IN 46225
Phone: (317) 352-5822

TECHNOLOGY DESIGN:

Design 27
1650 East 49th Street
Indianapolis, IN 46205
Phone: (317) 536-8000

CIVIL ENGINEER:

The Schneider Corporation
Historic Fort Harrison
530 E. Ohio Street, Suite G
Indianapolis, IN 46204
Phone: (317) 655-7777

This Addendum is issued in accordance with the provisions of Contract Documents and becomes a part of the Contract Documents as provided therein. The information contained herein modifies the original Bidding Documents dated October 4, 2021 and all prior Addenda as applicable. Requirements of the original Bidding Documents and previous Addenda remain in effect except as modified by this Addendum. Acknowledge receipt of this Addendum in the space provided on the Bid Form. Failure to do so may subject the Bidder to disqualification.

PART 1 – GENERAL CLARIFICATIONS (BIDDER QUESTIONS & RESPONSE)

1. NONE.

PART 2 – PROJECT MANUAL CHANGES

1. NONE.

PART 3 - DRAWING SHEET CHANGES

1. SHEET L-201 SITE FEATURES PLAN
 - a. See revised sheet.
 - b. Revised ADA striping and van accessible sign location.
2. SHEET L-501 PLANTING PLAN
 - a. See revised sheet.
 - b. Revised Note 10 - Soil Depths
 - c. Revised Plant Schedule.
3. SHEET L-702 SITE DETAILS
 - a. See revised sheet.
 - b. Added Detail C3 Plan Enlargement | ADA Parking Layout
 - c. Added Details G6 International Symbol of Accessibility

PART 4 – ATTACHMENTS

1. SHEET L-201 SITE FEATURES PLAN
2. SHEET L-501 PLANTING PLAN
3. SHEET L-702 DETAILS

END OF ADDENDUM 04

PLANTING NOTES

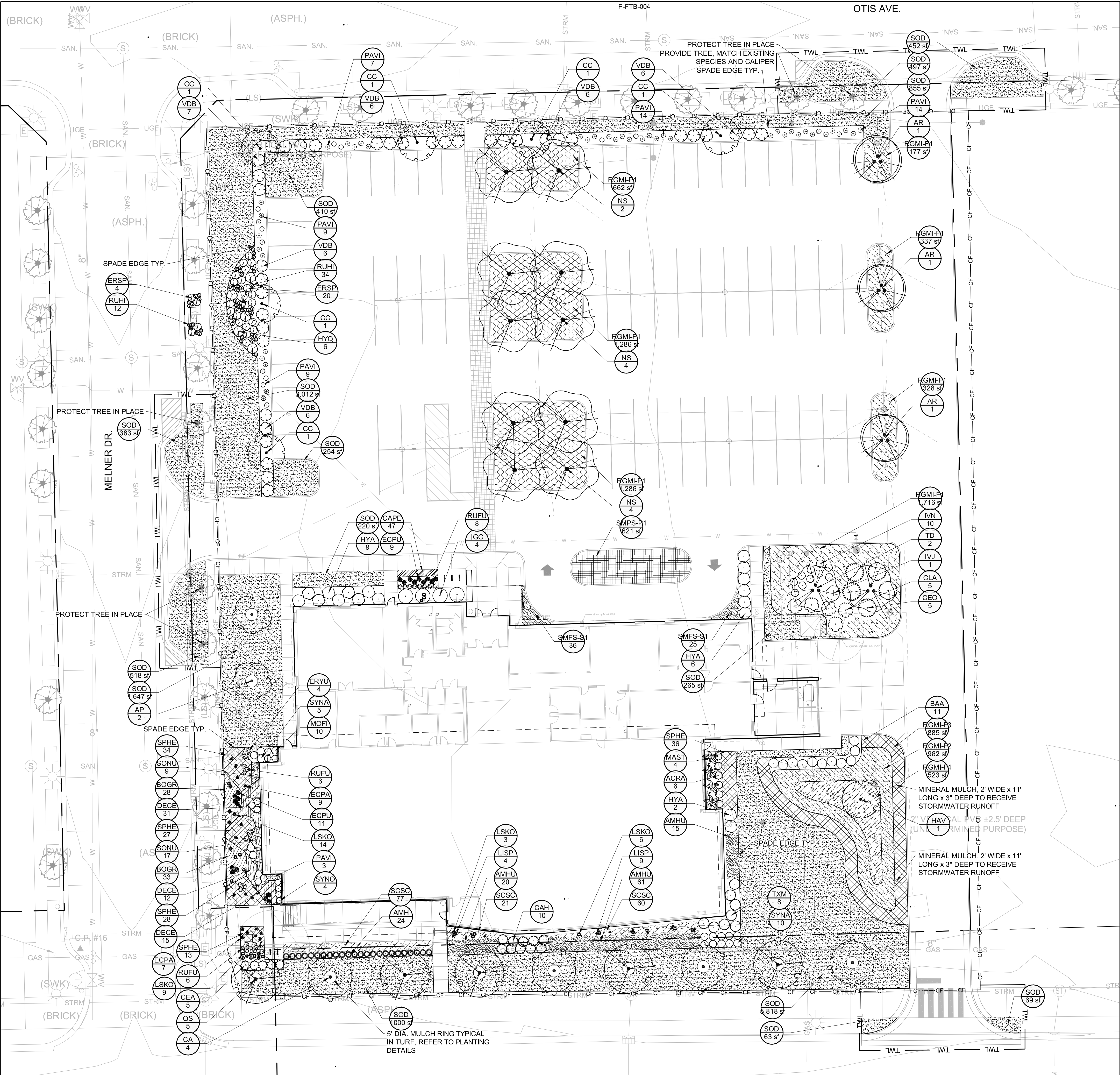
- PARTICIPATE IN THE PRE-INSTALLATION CONFERENCE FOR THE PLANTING SCOPE OF WORK, ACCORDING TO THE PROJECT SPECIFICATIONS, PRIOR TO COMMENCEMENT.
- MATCH GRAPHIC REPRESENTATION OF PLANTING DESIGN SHOWN UNLESS NOTED / DIMENSIONED OTHERWISE. REFER TO PROJECT DETAILS FOR PLACEMENT OF HATCHED AREAS.
- DEVIATION FROM THE PLANTING PLAN DESIGN IN FORM OR MATERIALS WILL REQUIRE CORRECTION; COST INCURRED WILL BE CONTRACTOR'S.
- EXISTING AND PROPOSED UTILITIES THAT ARE SHOWN ARE FOR REFERENCE ONLY. REFER TO THE SITE SURVEY FOR EXISTING UTILITIES AND VERIFY IN THE FIELD. REFER TO C-SERIES AND E-SERIES DRAWINGS FOR PROPOSED UTILITIES.
- COMMENCEMENT OF PLANTING SCOPE CONSTITUTES ACCEPTANCE OF SITE CONDITIONS, SUBGRADE, AND SUBSOIL CONDITIONS. ENSURE THAT NECESSARY AND SPECIFIED PLANTING CONDITIONS HAVE BEEN ACHIEVED PRIOR TO LANDSCAPE INSTALLATION.
- INSTALL SPECIFIED TURFGRASS SEED AT DISTURBED AREAS NOT OTHERWISE IDENTIFIED FOR PLANT MATERIAL.
- PROVIDE 2" ORGANIC MULCH AT ALL PLANTING AREAS, UNLESS NOTED OTHERWISE, REFER TO DETAILS.
- REFER TO SPECIFICATIONS FOR PLANT STAGING, HANDLING, PLANTING, AND STAKING REQUIREMENTS.
- REMOVE OVERPOUR OF LIME STABILIZED SOILS FROM AREAS PROPOSED TO RECEIVE SOIL AND PLANTINGS PRIOR TO INSTALLATION OF SOILS AND PLANT MATERIAL. SUBGRADE TO BE REVIEWED PRIOR TO PLACEMENT OF PLANT AND SOIL MATERIAL PER SPECIFICATIONS. AREAS FOUND TO BE NON-CONFORMING WILL BE REJECTED.

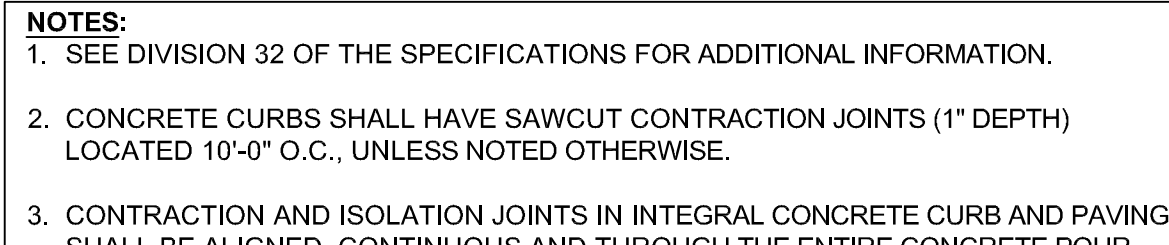
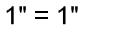
- SOIL DEPTHS:
 - SEEDING GRASS - SIX INCHES - IMPORTED TOPSOIL
 - SODDED GRASS - FOUR INCHES - IMPORTED TOPSOIL
 - GROUND COVER - EIGHT INCHES - IMPORTED TOPSOIL
 - NATIVE PLUG AREAS - EIGHT INCHES - IMPORTED TOPSOIL
 - SHRUB AND PERENNIAL BEDS - FOURTEEN INCHES - IMPORTED TOPSOIL w/AMENDMENTS PER "329300 PLANTS"
 - STORMWATER PLANTER AREAS - FOURTEEN INCHES - WATER QUALITY MANAGEMENT FACILITY SOIL MIX
 - TREES - REFER TO DETAILS - USE IMPORTED TOPSOIL w/AMENDMENTS PER "329300 PLANTS"

TREE PROTECTION NOTES

- TREE PROTECTION FENCING SHALL BE 6'-0" HEIGHT GALVANIZED STEEL CHAIN LINK FENCE WITH IN-GROUND POSTS DIRECT BURIED. NO CONSTRUCTION TRAFFIC, MATERIAL OR EQUIPMENT STORAGE SHALL BE ALLOWED WITHIN FENCE LIMITS. PROVIDE 4'-0" WIDE GATED OPENINGS FOR OWNER ACCESS AND MAINTENANCE. GATES SHALL BE LOCKABLE. PROVIDE LOCKS AND KEYS FOR OWNER USE DURING CONSTRUCTION.
- PROVIDE TREE PROTECTION FENCING AT EXISTING TREES TO REMAIN LOCATED OUTSIDE THE FENCED-IN CONSTRUCTION ZONE - AREAS DEMARCATED WITH TWL (TEMPORARY WORK LIMIT) BOUNDARIES. EXTEND TREE PROTECTION FENCE TO 2' BEYOND TREE CANOPY UNLESS PREVENTED BY SITE CONDITIONS. FENCE LOCATIONS MUST BE APPROVED IN THE FIELD BY LANDSCAPE ARCHITECT.
- AN APPROVED LICENSED ARBORIST IS TO OVERSEE ALL REMOVALS WITHIN CRITICAL ROOT ZONES OF EXISTING TREES TO REMAIN. LICENSED ARBORIST IS TO PERFORM TREE PRUNING AND ROOT PRUNING ON TREES(S) TO REMAIN PER SPECIFICATIONS AND AS NEEDED DURING CONSTRUCTION.
- TREE PROTECTION FENCING AND STORMWATER POLLUTION PREVENTION PLAN (SWPPP) NOTICE OF INTENT SHALL BE IN PLACE PRIOR TO BEGINNING DEMOLITION (AS REQUIRED).
- FAILURE TO PROVIDE AND MAINTAIN TREE PROTECTION FENCE AND INDICATED AREA BY CONTRACTOR WILL REQUIRE CONSULTATION WITH LICENSED ARBORIST TO DETERMINE EXTENT OF DAMAGE. REMEDIATION OF DAMAGES TO PROTECTED TREES WILL BE AT CONTRACTOR COST.

PLANT SCHEDULE			
DECIDUOUS SHADE TREE	BOTANICAL / COMMON NAME	SIZE	CAL SIZE
AR	Acer rubrum 'October Glory' / October Glory Red Maple	6" Minimum	3"
CA	Carpinus caroliniana / American Hornbeam	6" Minimum	3"
CC	Crataegus crus-galli 'Cruzam' TM / Crusader Cockspur Hawthorn	6" Minimum	3"
NS	Nyssa sylvatica / Tupelo	6" Minimum	3"
QS	Quercus shumardii / Shumard Oak	6" Minimum	3"
TD	Taxodium distichum / Bald Cypress	6" Minimum	3"
UNDERSTORY TREES	BOTANICAL / COMMON NAME	SIZE	CAL SIZE
AP	Aesculus pavia / Red Buckeye SINGLE TRUNK	6" Minimum	3" SINGLE STEM
DECIDUOUS SHRUBS	BOTANICAL / COMMON NAME	SIZE	
BAA	Baptisia australis / Blue Wild Indigo	3 Gal.	
CEA	Ceanothus americanus / New Jersey Tea	24" Ht.	
CEO	Cephalanthus occidentalis / Buttonbush	30" Ht.	
CLA	Clethra alnifolia / Summersweet	24" Ht.	
CAH	Clethra alnifolia 'Hummingbird' / Hummingbird Summersweet	24" Ht.	
HAV	Hamamelis virginiana / Common Witch Hazel	30" Ht.	
HYA	Hydrangea arborescens / Wild Hydrangea	24" Ht.	
HYQ	Hydrangea quercifolia 'Pee Wee' / Pee Wee Oakleaf Hydrangea	24" Ht.	
IVJ	Ilex verticillata 'Jim Dandy' / Jim Dandy Winterberry	24" Ht.	
IVN	Ilex verticillata 'Nana' / Red Sprite Winterberry	24" Ht.	
VDB	Viburnum dentatum 'Blue Muffin' / Blue Muffin Arrowwood Viburnum	30" Ht.	
EVERGREEN SHRUBS	BOTANICAL / COMMON NAME	SIZE	
IGC	Ilex glabra 'Compacta' / Compact Inkberry	30" Ht.	
TXM	Taxus x media 'Dark Green Spreader' / Dark Green Spreader Anglojap Yew	24" Ht.	
GRASSES	BOTANICAL / COMMON NAME	SIZE	
ERSP	Eragrostis spectabilis / Purple Lovegrass	3 Gal.	
PAVI	Panicum virgatum 'Heavy Metal' / Heavy Metal Switch Grass	3 Gal.	
PERENNIALS	BOTANICAL / COMMON NAME	SIZE	
ACRA	Actaea racemosa / Black Cohosh	1 Gal.	
AMH	Amsonia hubrichtii / Arkansas Bluestar	3 Gal.	
ECPA	Echinacea pallida / Pale Purple Coneflower	1 Gal.	
ECPU	Echinacea purpurea / Coneflower	1 Gal.	
ERYU	Eryngium yuccifolium / Rattlesnake Master	1 Gal.	
LISP	Liatris spicata 'Floristan Weiss' / Floristan White Spike Gayfeather	1 Gal.	
LSKO	Liatris spicata 'Kobold' / Kobold Spike Gayfeather	1 Gal.	
MAST	Matteuccia struthiopteris / Ostrich Fern	1 Gal.	
MOFI	Monarda fistulosa / Bergamot	3 Gal.	
RUFU	Rudbeckia fulgida sultivanti 'Goldsturm' / Goldsturm Coneflower	1 Gal.	
RUHI	Rudbeckia hirta 'Indian Summer' / Indian Summer Black-eyed Susan	1 Gal.	
SYNO	Symphyotrichum novae-angliae / New England Aster	1 Gal.	
SYNA	Symphyotrichum novae-angliae 'Purple Dome' / Purple Dome New England Aster	1 Gal.	
GRASSES	BOTANICAL / COMMON NAME	SIZE	
	Bouteloua gracilis / Blue Grama Grass	1 Gal.	21" o.c.
	Carex pennsylvanica / Pennsylvania Sedge	1 Gal.	12" o.c.
	Deschampsia cespitosa / Tufted Hair Grass	1 Gal.	21" o.c.
	Schizachyrium scoparium / Little Bluestem	3 Gal.	21" o.c.
	Sorghastrum nutans / Indian Grass	1 Gal.	21" o.c.
	Sporobolus heterolepis / Prairie Dropseed	1 Gal.	24" o.c.
HERBACEOUS PERENNIAL	BOTANICAL / COMMON NAME	SIZE	
	Amsonia hubrichtii / Arkansas Bluestar	3 Gal.	30" o.c.
MIXES	BOTANICAL / COMMON NAME	SIZE	
	Rain Garden Mix - Full Sun Mix 1 / Rain Garden Mix - Full Sun Mix 1 Carex brevior; Carex vulpinoidea (equally; 18" o.c., 1 GL.); Echinacea pallida (72" o.c. in groups of 1-3, Quart)	Refer to Remarks	For bidding: 3 Echinacea pallida planted together @ 72" o.c. overlaid on carex.
	Rain Garden Mix - Full Sun Mix 2 / Rain Garden Mix - Full Sun Mix 2 Carex brevior; Carex vulpinoidea (equally; 18" o.c., 1 GL.); Asclepias syriaca (36" o.c. in groups of 1-3, Quart); Rattibidia pinnata (60" o.c. in groups of 3-5, Quart); Liatris spicata (30" o.c. in groups of 1-3, Quart); Echinacea pallida (72" o.c. in groups of 1-3, Quart)	Refer to Remarks	For bidding: 4 Rattibidia pinnata @ 60" o.c. overlaid on carex; 2 Liatris spicata @ 8" o.c. overlaid on carex and L. spicata.
	Rain Garden Mix - Full Sun Mix 3 / Rain Garden Mix - Full Sun Mix 3 Sporobolus heterolepis (24" o.c., 1 GL.); Asclepias tuberosa (48" o.c., 1 GL.)	Refer to Remarks	For bidding: calculate plants @ 24" o.c. x 90%; Sporobolus: Asclepias ratio = 4:1 plants; do not overlay.
	Rain Garden Mix - Full Sun Mix 4 / Rain Garden Mix - Full Sun Mix 4 Carex brevior; Carex vulpinoidea (equally; 18" o.c., 1 GL.); Lobelia siphilitica (30" o.c. in groups of 1-3, Quart); Conoclinium coelestinum (24" o.c. Quart); Narcissus trumpet 'Dutch Master' (groupings of 3-5 from 2" from back of curb to back of curb, spac 24" o.c.)	Refer to Remarks	For bidding: calculate plants @ 18" o.c. x 80%; Carex: Lobelia: Conoclinium ratio = 7:1:2 plants; do not overlay. Add 60 Narcissus, overlaid.
	Rain Garden Mix - Part Sun Mix / Rain Garden Mix - Part Sun Mix Carex brevior; Carex vulpinoidea (equally; 18" o.c., 1 GL.); Lobelia siphilitica (30" o.c. in groups of 1-3, Quart); Conoclinium coelestinum (24" o.c. Quart); Narcissus trumpet 'Dutch Master' (groupings of 3-5 from 2" from back of curb to back of curb, spac 24" o.c.)	Refer to Remarks	For bidding: calculate plants @ 18" o.c. x 80%; Carex: Lobelia: Conoclinium ratio = 7:1:2 plants; do not overlay. Add 60 Narcissus, overlaid.
	Shade Mix - Full Shade Mix 1 / Shade Mix - Full Shade Mix 1 3:1 Mix of Carex Pennsylvanica (1 GL.) and Tiarella cordifolia (straight species, 1 GL.)	Refer to Remarks	For bidding: Carex: Liatris ratio = 12:1; do not overlay.
	Shade Mix - Partial Shade Mix 2 / Shade Mix - Partial Shade Mix 2 Mix of Carex Pennsylvanica (12" o.c., 1 GL.) and Allium cernuum (irregular drifts of 5-7 throughout mix - 6" o.c.) and Liatris spicata 'Kobold' Qt. irregular drifts of 3-5 throughout mix > 8" o.c. Drifted plants do not replace Carex, but drifted between.	Refer to Remarks	For bidding: Carex: Liatris ratio = 12:1; do not overlay.
	Turf	SIZE	
	Turfgrass Sod	See Specifications.	



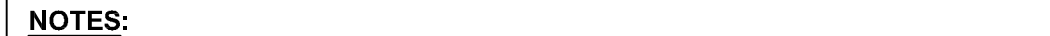

$$1\frac{1}{2} = 1.5$$


A detailed perspective diagram of a curb ramp. The diagram illustrates the transition from a sidewalk to a street. Key components and slopes are labeled with arrows pointing to them:

- WIDTH**: Indicated by a dimension line across the top of the ramp.
- TURNING SPACE**: The area at the top of the ramp where a vehicle would turn.
- GRADE BREAK**: The transition point between the sidewalk and the ramp.
- CROSS SLOPE**: The slope across the width of the ramp, shown in two locations.
- RAMP**: The main sloped surface of the curb ramp.
- FLARE SLOPE**: The slope at the bottom of the ramp where it meets the street.
- RETURN CURB**: The curb at the bottom of the ramp.
- DETECTABLE WARNING SURFACE**: A textured rectangular area on the ramp.
- BUFFER OR OTHER NON-WALKABLE SURFACE**: The area between the ramp and the street.
- CURB FLUSH WITH PAVEMENT AND GUTTER LINE**: The bottom edge of the ramp.
- VERTICAL CURB**: The curb on the right side of the ramp.
- COUNTER SLOPE**: The slope on the right side of the ramp.
- CLEAR SPACE**: The area at the bottom of the ramp.
- CROSSWALK MARKINGS**: Dashed lines indicating the crosswalk area.
- SIDEWALK OR OTHER WALKABLE SURFACE**: The area to the left of the ramp.
- RUNNING SLOPE**: The slope along the length of the ramp, shown in two locations.

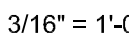
CURB RAMP DRAWING INDEX:

A1
L-702

$$3/8" = 1'-0"$$


1. SEE DIVISION 32 OF THE SPECIFICATIONS FOR ADDITIONAL INFORMATION.
2. **CONCRETE PAVING JOINTS:** SEE A4/L-701 FOR JOINT DETAILS.
3. COMPLY WITH CURB RAMP DRAWING INDEX AND GENERAL NOTES. REFER TO A1/L-702.
4. THE BOTTOM EDGE OF THE RAMP AND TOP OF CURB SHALL BE FLUSH WITH THE EDGE OF ADJACENT PAVEMENT AND GUTTER LINE.
5. CURB RAMP SURFACE SHALL BE COARSE-BROOMED TRANSVERSE TO THE RUNNING SLOPE.

C4
L-702

$$\frac{3}{8}'' = 1'-0''$$


- A3**
L-702

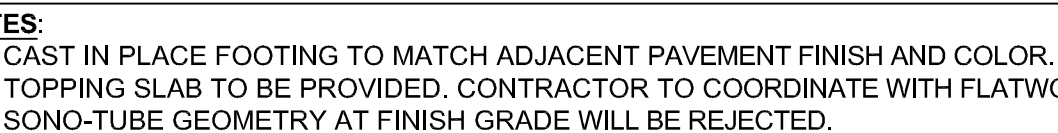
$$3/4" = 1'-0"$$


2. JOINTS IN ADJOINING NEW FLATWORK SHALL BE CARRIED THROUGH THE CURB VACE AS SAWCUT CONTRACTION JOINTS (1" DEPTH). IN THE ABSENCE OF ADJOINING FLATWORK, CONCRETE CURBS SHALL HAVE SAWCUT CONTRACTION JOINTS (1" DEPTH) LOCATED AT 10'-0" O.C., UNLESS NOTED OTHERWISE.
3. TRANSITIONS TO "COMBINED CURB AND GUTTER (SPILLING)", WHERE INDICATED, SHALL BE SMOOTH AND GRADUAL WITH NO ABRUPT CHANGES IN THE GUTTER PAN.

L-702



- A5**
L-702

$$3/8" = 1'-0"$$


- DETAIL | LIGHT POLE BASE - AT GRADE**

 $3/4^{\circ} =$ 

- DE**
3/8"

$$\frac{3}{8}'' = 1'-4$$

L-702

18005.000

SHEET NUMBER

L-702