

ADDENDUM NO. 2

March 22, 2022

**Portage Township School - Portage High School Athletic Field Lighting
Portage IN, 46368**

TO: ALL BIDDERS OF RECORD

This Addendum forms a part of and modifies the Bidding Requirements, Contract Forms, Contract Conditions, the Specifications, and the Drawings dated March 9, 2022 by Alliance Architects. Acknowledge receipt of the Addendum in the space provided on the Bid Form. Failure to do so may subject the Bidder to disqualification.

This Addendum consists of page ADD 2-1 and Addendum No. 2 from SCO Engineering, LLC dated March 21, 2022 and consisting of 1 page and 1 drawing.

Addendum 2

6534 Constitution Drive
Fort Wayne, IN 46804
(260) 436-9213
fax (260) 432-5481

ADDENDUM NO. 2

DATE: March 21st, 2022

PROJECT: PORTAGE TOWNSHIP SCHOOLS – HIGH SCHOOL
ATHLETIC FIELD LIGHTING

COMMISSION NO. **SCO** Engineering, LLC – 222620

The Contractor shall incorporate, into the Contract Documents and into his bid, the following changes and/or clarifications to the Drawings, Specifications, and Scope of Work. All contractors are responsible to review the entire Addendum documents, including all attached drawings for revisions to the scope of work. The attached drawings may include additional work that might not be called out within the following verbiage.

ELECTRICAL

I. **DRAWING E6.1: Re-issued**

1. Tennis Court Pedestal Detail, Note 2 edited.
2. Panel "TH1" schedule edited.
3. Panel "1TLV1" schedule edited.
4. Transformer Schedule edited.

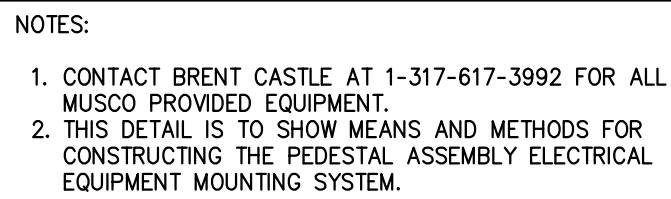
ZONE	SELECTOR SWITCH	ZONE DESCRIPTION	POLE ID	CONTACTOR ID
ZONE 1	1	TENNIS 1 & 2	T1, T2, T5, T6	C1
ZONE 2	2	TENNIS 3 & 4	T2, T3, T4, T5	C2
ZONE 3	3	TENNIS 5 & 6	T5, T6, T7, T8	C3
ZONE 4	4	TENNIS 7 & 8	T4, T5, T8, T9	C4
ZONE 5	5	TENNIS 9 & 10	T11, T12, T7, T8	C5
ZONE 6	6	TENNIS 11 & 12	T10, T11, T8, T9	C6

POLE ID	POLE HEIGHT (FT)	LUMINAIRE PROVIDED BY	LUMINAIRE INSTALLED BY	LUMINAIRE MANUFACTURER	LUMINAIRE TYPE	LUMINAIRE SOURCE	LUMINAIRE WATTAGE	LUMINAIRE VOLTAGE	LUMINAIRE LUMENS	MOUNTING HEIGHT (FT)	LUMINAIRE QUANTITY	LUMINAIRE TOTAL	ZONES
T1	50	MUSCO LIGHTING	CONTRACTOR	MUSCO LIGHTING	TLC-LED-1200	LED-5700K-75CRI	1170	480V/3PH	136,000	50 *	2	2	1
T2	EXISTING (30)	MUSCO LIGHTING	CONTRACTOR	MUSCO LIGHTING	TLC-LED-1200	LED-5700K-75CRI	1170	480V/3PH	136,000	50 *	2 / 2	4	1 / 2
T3	50	MUSCO LIGHTING	CONTRACTOR	MUSCO LIGHTING	TLC-LED-1200	LED-5700K-75CRI	1170	480V/3PH	136,000	50 *	2	2	2
T4	50	MUSCO LIGHTING	CONTRACTOR	MUSCO LIGHTING	TLC-LED-1200	LED-5700K-75CRI	1170	480V/3PH	136,000	50 *	2 / 2	4	2 / 4
T5	EXISTING (30)	MUSCO LIGHTING	CONTRACTOR	MUSCO LIGHTING	TLC-LED-900	LED-5700K-75CRI	890	480V/3PH	89,600	30 *	2 / 2 / 2 / 2	8	1 / 2 / 3 / 4
T6	50	MUSCO LIGHTING	CONTRACTOR	MUSCO LIGHTING	TLC-LED-1200	LED-5700K-75CRI	1170	480V/3PH	136,000	50 *	2 / 2	4	1 / 3
T7	50	MUSCO LIGHTING	CONTRACTOR	MUSCO LIGHTING	TLC-LED-1200	LED-5700K-75CRI	1170	480V/3PH	136,000	50 *	2 / 2	4	3 / 5
T8	EXISTING (30)	MUSCO LIGHTING	CONTRACTOR	MUSCO LIGHTING	TLC-LED-900	LED-5700K-75CRI	890	480V/3PH	89,600	30 *	2 / 2 / 2 / 2	8	3 / 4 / 5 / 6
T9	50	MUSCO LIGHTING	CONTRACTOR	MUSCO LIGHTING	TLC-LED-1200	LED-5700K-75CRI	1170	480V/3PH	136,000	50 *	2 / 2	4	4 / 6
T10	50	MUSCO LIGHTING	CONTRACTOR	MUSCO LIGHTING	TLC-LED-1200	LED-5700K-75CRI	1170	480V/3PH	136,000	50 *	2	2	6
T11	EXISTING (30)	MUSCO LIGHTING	CONTRACTOR	MUSCO LIGHTING	TLC-LED-1200	LED-5700K-75CRI	1170	480V/3PH	136,000	50 *	2 / 2	4	5 / 6
T12	50	MUSCO LIGHTING	CONTRACTOR	MUSCO LIGHTING	TLC-LED-1200	LED-5700K-75CRI	1170	480V/3PH	136,000	50 *	2	2	5

ZONE	SELECTOR SWITCH	ZONE DESCRIPTION	POLE ID	CONTACTOR ID
ZONE 1	1	FOOTBALL EAST	F4	C1
			F5	C2
			F6	C3
ZONE 2	2	FOOTBALL WEST	F1	C4
			F2	C5
			F3	C6
ZONE 3	3	PRACTICE FIELD	F4	C7
			F5	C8
ZONE 4	4	EGRESS	F1	C9
			F3	C9
			F4	C9
			F6	C9

POLE ID	POLE HEIGHT (FT)	LUMINAIRE PROVIDED BY	LUMINAIRE INSTALLED BY	LUMINAIRE MANUFACTURER	LUMINAIRE TYPE	LUMINAIRE SOURCE	LUMINAIRE WATTAGE	LUMINAIRE VOLTAGE	LUMINAIRE LUMENS	MOUNTING HEIGHT (FT)	LUMINAIRE QUANTITY	CONTACTOR ID	ZONES
F1		MUSCO LIGHTING	CONTRACTOR	MUSCO LIGHTING	TLC-BT-575 TLC-LED-900 TLC-LED-1500	LED-5700K-75CRI LED-5700K-75CRI LED-5700K-75CRI	575 890 1430	480V/3PH 480V/3PH 480V/3PH	52,000 89,600 160,000	15.5 * 70 * 70 *	2 8 1	C4 C4 C9	2 2 4
F2	EXISTING (100)	MUSCO LIGHTING	CONTRACTOR	MUSCO LIGHTING	TLC-LED-1500	LED-5700K-75CRI	1430	480V/3PH	160,000	100 *	6	C5	2
F3	EXISTING (70)	MUSCO LIGHTING	CONTRACTOR	MUSCO LIGHTING	TLC-BT-575 TLC-LED-900 TLC-LED-1500	LED-5700K-75CRI LED-5700K-75CRI LED-5700K-75CRI	575 890 1430	480V/3PH 480V/3PH 480V/3PH	52,000 89,600 160,000	15.5 * 70 * 70 *	2 8 1	C6 C6 C9	2 2 4
F4	EXISTING (70)	MUSCO LIGHTING	CONTRACTOR	MUSCO LIGHTING	TLC-BT-575 TLC-LED-900 TLC-LED-1200 TLC-LED-1500	LED-5700K-75CRI LED-5700K-75CRI LED-5700K-75CRI LED-5700K-75CRI	575 890 1170 1430	480V/3PH 480V/3PH 480V/3PH 480V/3PH	52,000 89,600 136,000 160,000	15.5 * 70 * 70 * 70 *	2 1 3 8	C1 C9 C7 C1	1 4 3 1
F5	EXISTING (100)	MUSCO LIGHTING	CONTRACTOR	MUSCO LIGHTING	TLC-LED-1200 TLC-LED-1500	LED-5700K-75CRI LED-5700K-75CRI	1170 1430	480V/3PH 480V/3PH	136,000 160,000	100 * 100 *	5 6	C8 C2	3 1
F6	EXISTING (70)	MUSCO LIGHTING	CONTRACTOR	MUSCO LIGHTING	TLC-BT-575 TLC-LED-900 TLC-LED-1500	LED-5700K-75CRI LED-5700K-75CRI LED-5700K-75CRI	575 890 1430	480V/3PH 480V/3PH 480V/3PH	52,000 89,600 160,000	15.5 * 70 * 70 *	2 8 2	C3 C9 C9	1 4 1

NOTE NO.	CONDUIT, CONDUCTORS, GROUND	NOTE	CONDUIT, CONDUCTORS, GROUND
(1)	3/4", 2-#10, 1-#10	(28)	3", 3-#350Kcmil, 1-#4
(2)	3/4", 3-#10, 1-#10	(29)	3", 4-#350Kcmil, 1-#4
(3)	3/4", 4-#10, 1-#10	(30)	4", 3-#500Kcmil, 1-#3
(4)	3/4", 2-#8, 1-#10	(31)	4", 4-#500Kcmil, 1-#3
(5)	3/4", 3-#8, 1-#10	(32)	4", 3-#600Kcmil, 1-#3
(6)	1", 4-#8, 1-#10	(33)	4", 4-#600Kcmil, 1-#3
(7)	1", 2-#6, 1-#8	(34)	2 SETS OF (2 1/2", 3-#4/0, 1-#2)
(8)	1", 3-#6, 1-#8	(35)	2 SETS OF (2 1/2", 4-#4/0, 1-#2)
(9)	1 1/4", 4-#6, 1-#8	(36)	2 SETS OF (3", 3-#250Kcmil, 1-#2)
(10)	1 1/4", 3-#4, 1-#8	(37)	2 SETS OF (3", 4-#250Kcmil, 1-#2)
(11)	1 1/4", 4-#4, 1-#8	(38)	2 SETS OF (3", 3-#350Kcmil, 1-#1)
(12)	1 1/4", 3-#3, 1-#8	(39)	2 SETS OF (3", 4-#350Kcmil, 1-#1)
(13)	1 1/4", 4-#3, 1-#8	(40)	2 SETS OF (4", 3-#500Kcmil, 1-#1/0)
(14)	1 1/4", 3-#2, 1-#6	(41)	2 SETS OF (4", 4-#500Kcmil, 1-#1/0)
(15)	1 1/2", 4-#2, 1-#6	(42)	2 SETS OF (4", 3-#600Kcmil, 1-#1/0)
(16)	1 1/2", 3-#1, 1-#6	(43)	2 SETS OF (4", 4-#600Kcmil, 1-#1/0)
(17)	2", 4-#1, 1-#6	(44)	3 SETS OF (4", 3-#350Kcmil, 1-#2/0)
(18)	2", 3-#1/0, 1-#6	(45)	3 SETS OF (4", 4-#350Kcmil, 1-#2/0)
(19)	2", 4-#1/0, 1-#6	(46)	3 SETS OF (4", 3-#600Kcmil, 1-#3/0)
(20)	2", 3-#2/0, 1-#6	(47)	3 SETS OF (4", 4-#600Kcmil, 1-#3/0)
(21)	2", 4-#2/0, 1-#6		[SERVICE ENTRANCE SETS]
(22)	2", 3-#3/0, 1-#6	(48)	2 SETS OF [4", 4-#600Kcmil, W/(1) 4" SPARE]
(23)	2 1/2", 4-#3/0, 1-#6	(49)	3 SETS OF [4", 4-#600Kcmil, W/(1) 4" SPARE]
(24)	2 1/2", 3-#4/0, 1-#4	(50)	4 SETS OF [4", 4-#600Kcmil, W/(1) 4" SPARE]
(25)	2 1/2", 4-#4/0, 1-#4	(51)	5 SETS OF [4", 4-#600Kcmil, W/(1) 4" SPARE]
(26)	2 1/2", 3-#250Kcmil, 1-#4	(52)	6 SETS OF [4", 4-#600Kcmil, W/(1) 4" SPARE]
(27)	3", 4-#250Kcmil, 1-#4	(53)	7 SETS OF [4", 4-#750Kcmil, W/(1) 4" SPARE]



① ELECTRICAL CONTRACTOR SHALL PROVIDE AND INSTALL NEW PANEL "TH1". INTERCEPT EXISTING MAIN FEEDER AT THE PEDESTAL AND EXTEND CONDUITS AND WIRES AS NEEDED. PROVIDE TERMINATIONS FOR A COMPLETE AND FUNCTIONAL SYSTEM.

ELECTRICAL CONTRACTOR SHALL PROVIDE, INSTALL A SQUARE D MINI POWER-ZONE UNIT SUBSTATION WITH PANEL "TH1" TRANSFORMER "TH1" 7.5KVA, 480V/416V DELTA PRIMARY AND 120-208V/1PH/3 SECONDARY. REFER TO TRANSFORMER SCHEDULE AND SHEET 6.0, E6.1. FOR MORE DETAILS. INTERCEPT EXISTING BRANCH CONDUIT AND WIRES AT THE PEDESTAL ASSEMBLY AND EXTEND TO PANEL "T1LV1". ELECTRICAL CONTRACTOR SHALL PROVIDE TERMINATIONS FOR A COMPLETE AND FUNCTIONAL SYSTEM.

③ CONTRACTOR ENCLOSURE EQUIPMENT PROVIDED BY MUSCO LIGHTING AND INSTALLED BY ELECTRICAL CONTRACTOR. ELECTRICAL CONTRACTOR TO INTERCEPT EXISTING CONDUIT AND (LOAD SIDE) WIRES FROM PREVIOUS EXISTING SYSTEM AT PEDESTAL ASSEMBLY. PROVIDE CONDUIT TO MUSCO EQUIPMENT. ELECTRICAL CONTRACTOR SHALL PROVIDE TERMINATIONS FOR A COMPLETE AND FUNCTIONAL SYSTEM. REFER TO MUSCO SHOP DRAWINGS PRIOR TO INSTALLATION.

1



2

TAG	KVA	PRIMARY VOLTAGE	SECONDARY VOLTAGE	TEMP RISE*	HOUSING	FED FROM	MOUNT
T-HV1	7.5	480 1PH 3W	120/208 1PH 3W	115° C	NEMA 3R	TH1	PAD MOUNTED
-	-	-	-	-	-	-	-

