

ADDENDUM NO. 5

March 3, 2022

**Additions & Renovations to Lawrence North High School Asphalt 2022
7802 Hague Road
Indianapolis, IN 46256**

TO: ALL BIDDERS OF RECORD

This Addendum forms a part of and modifies the Bidding Requirements, Contract Forms, Contract Conditions, the Specifications, and Drawings dated February 15, 2022, by Schmidt Associates. Acknowledge receipt of the Addendum in the space provided on the Bid Form. Failure to do so may subject the Bidder to disqualification.

This Addendum consists of Pages ADD 1-1 through ADD 1-1, and attached Schmidt Associates Addendum No. 1, dated February 28, 2022, consisting of 1 page and Drawing Sheets: CD104, CD106, CL104, CL106 and CL502.

Addendums #1 thru #4 applied to the Project that was previously bid.

A. SPECIFICATION SECTION 01 12 00 MULTIPLE CONTRACT SUMMARY

Add the following clarifications:

- Include three mobilizations
- Light Duty Asphalt per Detail 3E/CL502 – O.A. Depth is 9”.
- Asphalt Path Scope: Light Duty Asphalt per Detail 3E/CL502. (Concrete work by others).
- Subgrade will be established by the current Sitework Contractor.

ADDENDUM NO. 5

FEBRUARY 28, 2022

PREPARED BY SCHMIDT ASSOCIATES FOR:
LAWRENCE NORTH HIGH SCHOOL RENOVATION
LAWRENCE TOWNSHIP, M.S.D. OF

This Addendum consists of 1 Addendum page and 5 attachment pages totaling 6 pages.

Acknowledge receipt of this Addendum by inserting its number on the Bid Form. Failure to do so may subject the Bid to disqualification. This Addendum is part of the Contract Documents.

Bidder is encouraged to verify with reprographer of record all Addenda issued (do not rely exclusively on third party plan room services).

PART 1 - CHANGES TO PRIOR ADDENDA (NOT APPLICABLE)

PART 2 - CHANGES TO THE PROJECT MANUAL (NOT APPLICABLE)

PART 3 - CHANGES TO THE DRAWINGS

Modifications described herein shall be incorporated in the Drawings. All other Work shall remain unchanged.

3.1 DRAWING SHEETS: ADDITIONS, DELETIONS AND REPLACEMENTS

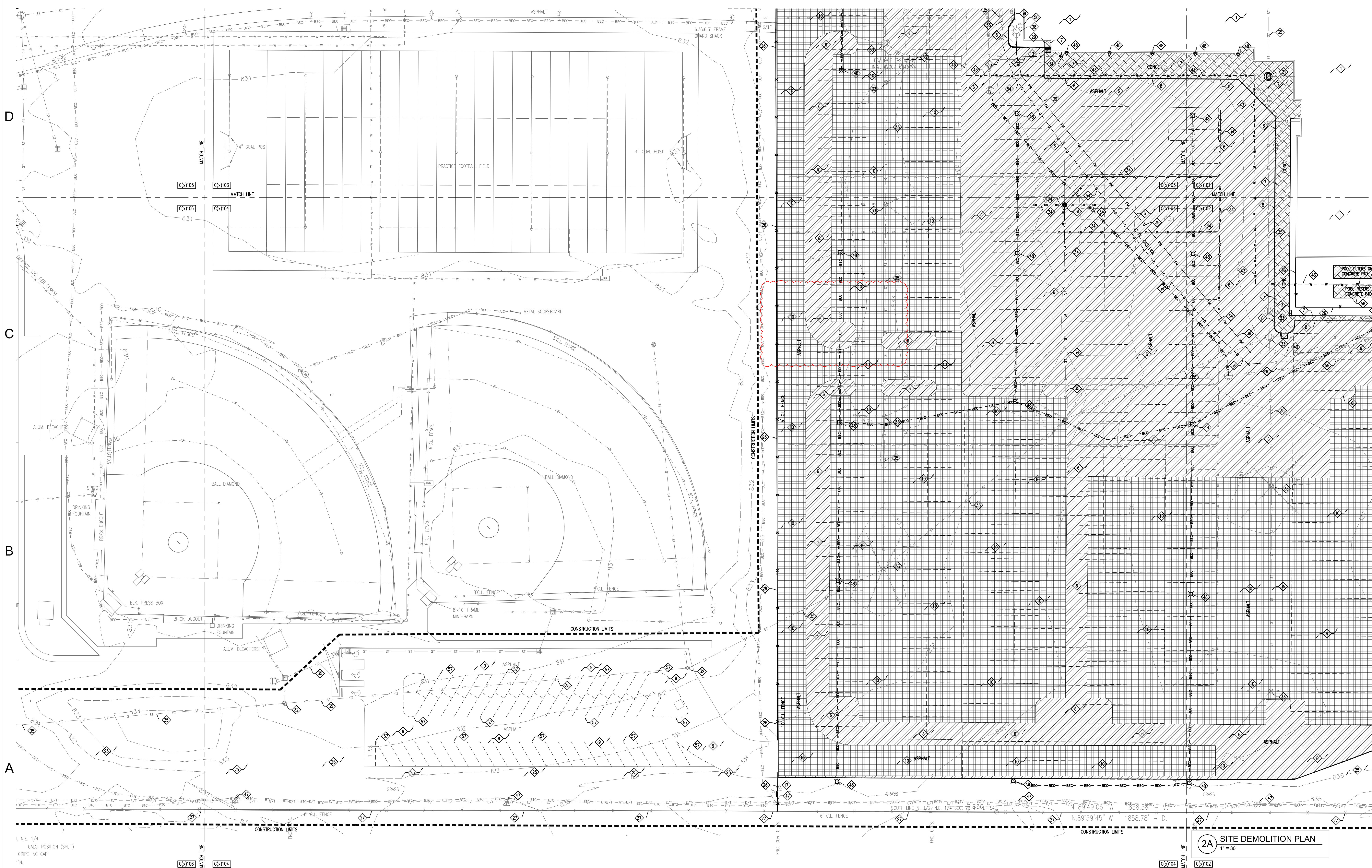
DRAWING NO.	INDICATE ACTION: REPLACE (R), ADD (A), DELETE (D)
C-SERIES DRAWINGS	
CD104	ADD
CD106	ADD
CL104	ADD
CL106	ADD
CL502	ADD

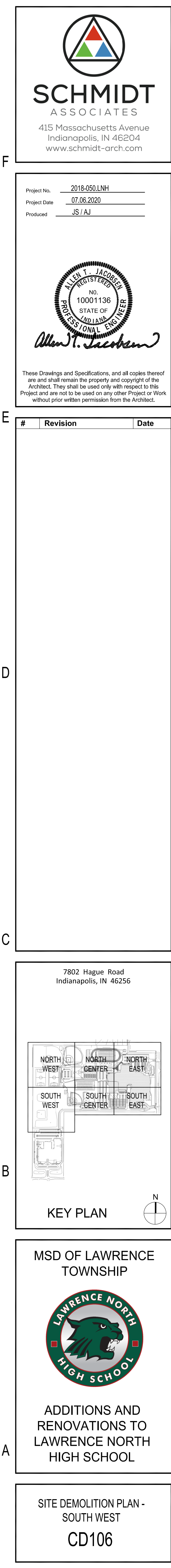
END OF ADDENDUM 5

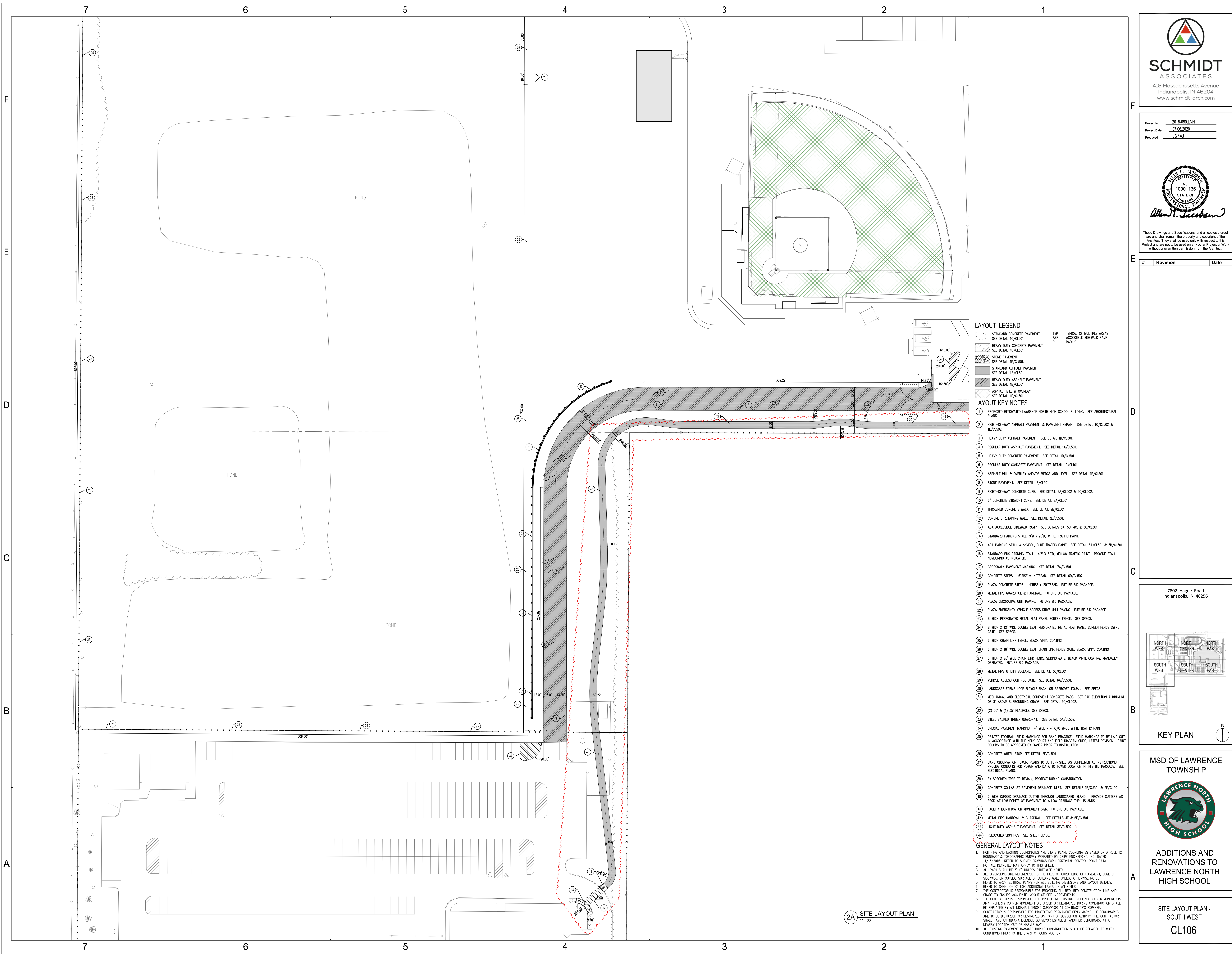
GENERAL NOTES

1. REFERENCE C-001 FOR GENERAL DEMOLITION PLAN NOTES.
2. SEE SHEETS FOR ATHLETIC FIELD ALTERNATES FOR DEMOLITION ACTIVITY ASSOCIATED WITH THAT WORK.
3. SEE ELECTRICAL SITE PLAN FOR ALL ELECTRICAL, PHONE, & TECHNOLOGY DEMOLITION WORK.
4. NOT ALL KEY NOTES MAY APPLY TO THIS SHEET.
5. USE CAUTION NOT TO DAMAGE UTILITIES AND SITE FEATURES TO REMAIN.
6. UNLESS NOTED OTHERWISE, ALL ITEMS TO BE REMOVED SHALL BE DISPOSED OF OR RECYCLED.
7. ALL DISPOSAL SHALL BE IN ACCORDANCE WITH APPLICABLE STATE AND FEDERAL REGULATIONS.
8. WHILE EVERY EFFORT HAS BEEN MADE TO SHOW ALL DEMOLITION REQUIRED, THE CONTRACTOR SHALL FIELD VERIFY EXISTING CONDITIONS PRIOR TO BID TO FULLY UNDERSTAND WHAT ITEMS ARE TO BE REMOVED.
9. THE EXISTENCE OF NEW CONSTRUCTION OR ITEMS TO BE REMOVED ARE NOT INDICATED ANYWHERE IN CONTRACT DOCUMENTS WILL BE CONSIDERED AS UNFORESEEN CONDITIONS. CHANGE ORDERS WILL NOT BE ISSUED FOR

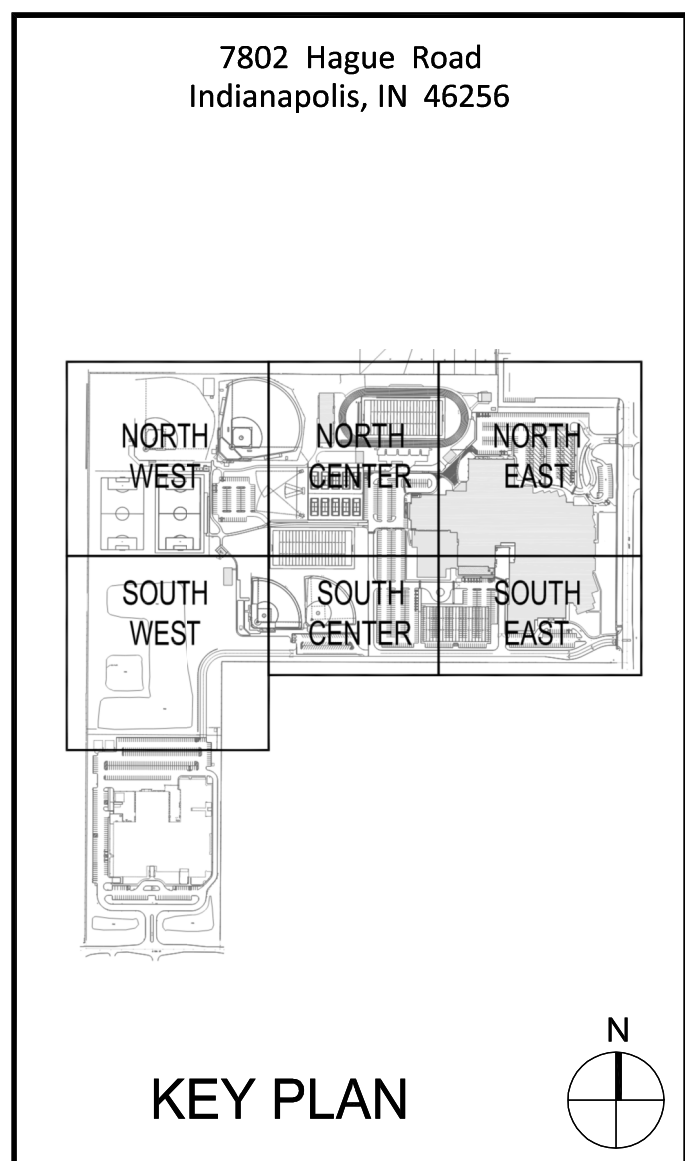
- 1 EXISTING LAWRENCE NORTH HIGH SCHOOL BUILDING TO REMAIN OPEN DURING CONSTRUCTION. MAXIMIZE VEHICULAR AND PEDESTRIAN ACCESS AT ALL TIMES.
- 2 PORTIONS OF LAWRENCE NORTH HIGH SCHOOL BUILDING & ACCESSORY STRUCTURES TO BE DEMOLISHED. SEE ARCHITECTURAL PLANS.
- 3 CANOPY TO BE DEMOLISHED. SEE ARCHITECTURAL PLANS.
- 4 CANOPY TO REMAIN. PROTECT DURING CONSTRUCTION.
- 5 ACCESSORY BUILDING TO BE REMOVED OR RELOCATED AT THE DIRECTION OF THE OWNER.
- 6 REMOVE ASPHALT PAVEMENT.
- 7 REMOVE CONCRETE PAVEMENT.
- 8 REMOVE CONCRETE CURB.
- 9 ASPHALT PAVEMENT TO REMAIN. REPAIR IF DAMAGED.
- 10 ASPHALT PAVEMENT TO REMAIN WITH WELL AND OVERLAY APPLICATION.
- 11 CONCRETE PAVEMENT TO REMAIN. REPAIR IF DAMAGED.
- 12 CONCRETE CURB TO REMAIN. REPAIR IF DAMAGED.
- 13 REMOVE CONCRETE STAIRS.
- 14 CONCRETE STAIRS TO REMAIN. REPAIR IF DAMAGED.
- 15 CONCRETE TRUCK DOCK TO REMAIN. REPAIR IF DAMAGED.
- 16 CONCRETE SIDEWALK RAMP AND WALLS TO REMAIN. REPAIR IF DAMAGED.
- 17 REMOVE SIGN AND POST.
- 18 SIGN AND POST TO REMAIN. REPAIR IF DAMAGED.
- 19 REMOVE FACILITY MONUMENT SIGN & ASSOCIATED FOOTINGS.
- 20 REMOVE SITE FURNISHINGS. SALVAGE ITEMS AT THE DIRECTION OF THE OWNER.
- 21 REMOVE FLAGPOLE & ASSOCIATED FOOTINGS.
- 22 MEMORIAL GARDEN TO REMAIN. PROTECT DURING CONSTRUCTION.
- 23 REMOVE TREES, SHRUBS, STUMPS & ROOT SYSTEM.
- 24 TREES TO REMAIN. PROTECT DURING CONSTRUCTION.
- 25 REMOVE ALL TURF AND MISCELLANEOUS PLANTINGS, CLEAR & GRASS. STRIP & STOCKPILE TOPSOIL. SEE STORM PLAN SHEETS.
- 26 REMOVE FENCE, GATES, POSTS AND ASSOCIATED HARDWARE. INSTALL TEMPORARY PERIMETER FENCE AT THE DIRECTION OF THE CONSTRUCTION MANAGER.
- 27 FENCE & GATES TO REMAIN. REPAIR IF DAMAGED.
- 28 REMOVE VEHICLE ACCESS CONTROL GATE.
- 29 REMOVE METAL HANDRAIL OR GUARDRAIL.
- 30 METAL HANDRAIL OR GUARDRAIL TO REMAIN. PROTECT DURING CONSTRUCTION.
- 31 REMOVE STORM SEWER STRUCTURE.
- 32 STORM SEWER STRUCTURE TO REMAIN. PROTECT DURING CONSTRUCTION.
- 33 STORM STRUCTURE TO REMAIN WITH MODIFICATIONS. SEE SITE UTILITY PLANS.
- 34 REMOVE STORM SEWER PIPE.
- 35 STORM SEWER PIPE TO REMAIN. PROTECT DURING CONSTRUCTION.
- 36 REMOVE SANITARY SEWER STRUCTURE.
- 37 SANITARY SEWER STRUCTURE TO REMAIN. PROTECT DURING CONSTRUCTION.
- 38 SANITARY STRUCTURE TO REMAIN WITH MODIFICATIONS. SEE SITE UTILITY PLANS.
- 39 REMOVE SANITARY SEWER PIPE. PERMANENTLY CAP ABANDONED LATERALS AT WALL.
- 40 SANITARY SEWER PIPE TO REMAIN. PROTECT DURING CONSTRUCTION.
- 41 REMOVE WATER STRUCTURE.
- 42 WATER STRUCTURE TO REMAIN. PROTECT DURING CONSTRUCTION.
- 43 REMOVE WATER PIPE.
- 44 CUT AND PERMANENTLY CAP WATER PIPE.
- 45 WATER PIPE TO REMAIN. PROTECT DURING CONSTRUCTION.
- 46 REMOVE IRRIGATION SYSTEM. PERMANENTLY CAP SUPPLY LINE(S) NEAR CONTROL BOX.
- 47 OVERHEAD POWER POLE AND LINES TO REMAIN. PROTECT DURING CONSTRUCTION.
- 48 REMOVE SITE LIGHTING FIXTURE AND BASE. SEE ELECTRICAL PLANS.
- 49 SITE LIGHTING FIXTURE AND BASE TO REMAIN. PROTECT DURING CONSTRUCTION.
- 50 REMOVE ELECTRICAL EQUIPMENT. SEE ELECTRICAL PLANS.
- 51 ELECTRICAL EQUIPMENT TO REMAIN. PROTECT DURING CONSTRUCTION.
- 52 REMOVE NATURAL GAS EQUIPMENT.
- 53 NATURAL GAS EQUIPMENT TO REMAIN. PROTECT DURING CONSTRUCTION.
- 54 REMOVE NATURAL GAS PIPE.
- 55 NATURAL GAS PIPE TO REMAIN. PROTECT DURING CONSTRUCTION.
- 56 REMOVE MECHANICAL EQUIPMENT AND ALL ASSOCIATED CONCRETE PADS, FOOTINGS, AND SUPPORTS. SEE MECHANICAL PLANS.
- 57 REMOVE PAVEMENT STRIP, PAVEMENT TO REMAIN.

[illegible]SITE DEMOLITION PLAN -
SOUTH CENTER





#	Revision	Date
---	----------	------





Rev	Revision	Date

