

**POST BID
ADDENDUM
NO. 4**

July 27, 2022

**Additions and Renovations to Edgewood Intermediate School
7620 E Edgewood Ave.
Indianapolis, IN, 46239**

TO: ALL BIDDERS OF RECORD

This Addendum forms a part of and modifies the Bidding Requirements, Contract Forms, Contract Conditions, the Specifications, and the Drawings dated May 23, 2022, by Gibraltar Design. Acknowledge receipt of the Addendum in the space provided on the Bid Form. Failure to do so may subject the Bidder to disqualification.

This Addendum consists of Pages ADD 4 - 1 through ADD 4 - 4, Specification Sections 00 02 00 – Notice To Bidders, 01 21 00 – Contract Allowances, 01 23 00 – Bid Alternates, and attached Gibraltar Design Addendum No. 4, dated July 07, 2022, consisting of 1 page and Drawing Sheets: A-111, A-730, A-601.

GENERAL NOTE

There will be a rebid of Bid Category 01. Bid Category 01 will be divided into two categories. The new bid categories are listed below:

BC01 – General Trades
BC12 – Site Demolition, Earthwork, & Site Utilities

A. SPECIFICATION SECTION 00 02 00 NOTICE TO BIDDERS –

Replace Specification Section as attached herein

- Prebid Date: August 02, 2022 (2:00 PM)
- Bid Date: August 16, 2022 (2:00 PM)

B. SPECIFICATION SECTION 01 12 00 MULTIPLE CONTRACT SUMMARY

1. Replace paragraph 3.03A Bid Category No. 1 - General Trades as listed below:

A. BID CATEGORY NO. 1 – GENERAL TRADES

General Requirements in Paragraph 3.02.B above.

Section	01 21 00	Allowances
Section	01 51 60	Temporary Sanitary Facilities
Section	01 51 80	Temporary Fire Protection
Section	01 52 10	Construction Aids and Temporary Enclosures
Section	01 52 60	Rubbish Container
Section	01 53 10	Fences (Temporary Security)
Section	01 53 30	Barricades
Section	01 57 60	Project Signs
Section	01 72 00	Field Engineering
Section	02 41 30	Minor Demolition for Remodeling
Section	03 30 00	Concrete
Section	06 10 00	Rough Carpentry
Section	06 20 00	Finish Carpentry
Section	06 61 16	Solid Surfacing Fabrications
Section	07 21 13	Board Insulation
Section	07 90 00	Joint Sealants
Section	07 95 00	Expansion Joint Systems
Section	08 11 13	Standard Steel Doors and Frames
Section	08 14 16	Wood Doors
Section	08 31 13	Access Doors
Section	08 33 00	Rolling Doors
Section	08 71 00	Door Hardware
Section	09 64 29	Wood Flooring
Section	09 67 23	Resinous Flooring
Section	09 91 00	Painting
Section	10 11 00	Markerboards and Corkboards
Section	10 12 00	Display Cases
Section	10 14 00	Signage
Section	10 21 14	Solid Plastic Toilet Partitions
Section	10 26 00	Wall Protection
Section	10 28 13	Toilet Accessories
Section	10 44 00	Fire Extinguishers
Section	10 51 13	Metal Lockers
Section	10 51 14	Ventilated Lockers
Section	11 52 13	Power Operated Projection Screen
Section	11 52 14	Projection Screens
Section	11 66 23	Athletic Equipment
Section	11 66 43	Scoreboards
Section	12 32 16	Plastic Laminate Casework
Section	12 66 00	Folding Bleachers

Section	31 20 00	Earthwork
Section	31 31 16	Termite Control
Section	32 11 16	Granular Base Course
Section	32 12 16	Asphaltic Concrete Paving
Section	32 13 13	Portland Cement Concrete Paving
Section	32 13 80	Exterior Concrete and Site Equipment
Section	32 17 23	Roadway and Paving Marking
Section	32 31 13	Chain Link Fences and Gates
Section	32 91 13	Soil Preparation
Section	32 92 19	Seeding
Section	32 93 00	Trees, Shrubs, and Ground Cover

Project Specific Clarifications:

1. Provide field engineering and layout for your own work.
2. Provide temporary sanitary facilities for entire project duration.
3. Provide traffic control measures when required for completion of your work.
4. Provide road cleaning/sweeping while performing work on site.
5. Provide new foundation backfill, drainage course under slab on grade, aggregate sub-base for curbs and walks, and aggregate sub-base for asphalt paving.
6. Provide dumpsters and rubbish containers for duration of project. Bid Category No. 3, 4 and 6 to provide rubbish containers for their own work.
7. Provide all selective architectural and structural demolition. Bid Category No. 1 to provide all site demolition. Bid Category No. 4, 8, 9 and 10 to provide selective demolition for their divisions of work.
8. Provide and maintain concrete washout pit/dumpster for all concrete spoils.
9. Furnish aluminum door hardware to Bid Category No. 5 for installation.
10. Provide all wood blocking. Bid Category No. 4 to provide blocking and sheathing within roof system.
11. Provide all foundation insulation.
12. Provide all joint sealants. Bid Category No. 5 to provide sealants for their scope of work. Bid Category No. 6 to provide any required gypsum board acoustical sealant.
13. Provide all permanent traffic signage identified on civil drawings.
14. Ensure that all exterior school doors and/or temporary doors are secure at the end of each workday for the entire project duration.
15. Expansion joints within the roof system to be provided by Bid Category No. 4.
16. Include 200 laborer hours for use at the discretion of the Construction Manager. Laborer hours used must be tracked with work tickets signed daily by Skillman Site Manager as documentation and included as backup documentation with monthly application for payments.
17. Include 100 painter hours for use at the discretion of the Construction Manager. Laborer hours used must be tracked with work tickets signed daily by Skillman Site Manager as documentation and included as backup documentation with monthly application for payments.
18. Include all work associated with replacement of vertical control joints sealant in existing brick as indicated on exterior elevation sheets.

2. Add paragraph 3.03M Bid Category No. 12 - Site Demolition, Earthwork, & Site Utilities as listed below:

M. **BID CATEGORY NO. 12 – SITE DEMOLITION, EARTHWORK & SITE UTILITIES**

General Requirements in Paragraph 3.02.B above.

Section	01 21 00	Allowances
Section	01 51 50	Temporary Water
Section	01 52 60	Rubbish Container
Section	01 55 00	Access Roads and Parking Areas
Section	01 56 20	Dust Control
Section	01 56 80	Erosion Control
Section	01 72 00	Field Engineering
Section	31 10 00	Site Clearing
Section	31 20 00	Earthwork
Section	31 25 13	Soil Erosion Control
Section	33 11 00	Water Distribution Systems
Section	33 11 50	Exterior Water Lines, Fire Lines, and Facilities
Section	33 13 00	Disinfection of Water Distribution System
Section	33 18 00	Water Quality Treatment
Section	33 30 00	Sanitary Sewage Systems
Section	33 40 00	Storm Sewage Systems
Section	33 46 00	Subdrainage Systems

Project Specific Clarifications:

1. Provide field engineering and layout for your own work.
2. Provide traffic control measures when required for completion of your work.
3. Provide all site demolition as noted on Site Demolition Plan. Include removal of demolished items from jobsite.
4. Provide road cleaning/sweeping while performing work on site.
5. Provide placement of all topsoil as required.
6. Reference specification section 01 55 00 for access road stone placement and removal requirement.

C. **SPECIFICATION SECTION 01 21 00 ALLOWANCES**

1. Reissued Specification Section is attached herein.

D. **SPECIFICATION SECTION 01 23 00 ALTERNATES**

1. Reissued Specification Section is attached herein.

SECTION 00 02 00 - NOTICE TO BIDDERS

NOTICE TO BIDDERS

Notice is hereby given that sealed bids will be received:

By: Franklin Township Community School Corporation
6141 S. Franklin Road, Indianapolis, IN 46259

For: Rebid BC01 General Trades and Addition of BC12 for Additions and
Renovations to Edgewood Intermediate School
7620 E Edgewood Ave., Indianapolis, IN 46239

At: 6141 S. Franklin Road, Indianapolis, IN 46259

Until: 2:00 PM (local time) August 16, 2022

Bid Opening: Bids will be publicly opened and read aloud at 2:00PM (local time), in the
Franklin Township Community School Corporation Board Room, 6141 S.
Franklin Road, Indianapolis, IN 46259.

All work for the complete construction of the Project will be under one or more prime contracts with the Owner based on bids received and on combinations awarded. The Construction Manager will manage the construction of the Project.

Construction shall be in full accordance with the Bidding Documents which are on file with the Owner and may be examined by prospective bidders at the following locations:

Office of the Construction Manager
The Skillman Corporation
3834 S. Emerson Avenue, Building A
Indianapolis, IN 46203

The Skillman Plan Room
www.skillmanplanroom.com

Prime and Non-Prime Contract Bidders must place an order on www.skillmanplanroom.com to be able to download documents electronically or request printed documents. There is no cost for downloading the bidding documents. Bidders desiring printed documents shall pay for the cost of printing, shipping and handling. Reprographic Services are provided by:

Eastern Engineering 9901 Allisonville Road, Fishers, IN 46038, Phone 317-598-0661.

WAGE SCALE: Wage Scale does not apply to this project.

A Pre-Bid Conference will be held on August 02, 2022 at 2:00 PM, local time, via Microsoft Teams.

Microsoft Teams meeting

Join on your computer or mobile app

[Click here to join the meeting](#)

Or join by entering a meeting ID

Meeting ID: 291 159 522 63

Passcode: unH5M8

Or call in (audio only)

[+1 317-762-3960,,610376883#](#) United States, Indianapolis

Phone Conference ID: 610 376 883#

[Find a local number](#) | [Reset PIN](#)

Attendance by bidders is optional, but recommended, in order to clarify or answer questions concerning the Drawings and Project Manual for the Project.

Bid security in the amount of ten percent (10%) of the Bid must accompany each Bid in accordance with the Instructions to Bidders.

The successful Bidders will be required to furnish Performance and Payment Bonds for one hundred percent (100%) of their Contract amount prior to execution of Contracts.

Contractors submitting bids for the performance of any Work as specified in this building Project should make such Bids to **Franklin Township Community School Corporation, a public building corporation.** Contractors are advised that the Contract as finally entered into with any successful Bidder may be entered into with either the School Corporation or the Building Corporation or certain portions of the Contract may be entered into by both the School Corporation and the Building Corporation.

The Owner reserves the right to accept or reject any Bid (or combination of Bids) and to waive any irregularities in bidding. All Bids may be held for a period not to exceed **60** days before awarding contracts.

Franklin Township Community School Corporation

By: Fred McWhorter

END OF SECTION 00 02 00

SECTION 01 21 00 – ALLOWANCES

PART 1 - GENERAL

1.01 RELATED DOCUMENTS

- A. Drawings and general provisions of the Contract, including amended General Conditions and other Division-1 Specification Sections, apply to work of this Section.

1.02 REQUIREMENTS INCLUDED

- A. The Specifications contain Allowances for particular items, methods of construction, quantities of materials, labor for certain items and these stated Allowances shall be included in the total lump sum bid price.
 - 1. Should the final amounts as determined from actual costs vary from these stated Allowances, the Contract price will be adjusted by Change Order as stated in the Conditions of the Contract.
 - 2. Under no circumstances shall work exceeding the stated Allowance amounts, proceed without a properly executed Change Order.
- B. A "Schedule of Allowances" showing amounts included in each prime Contract Sum, is included at the end of this Section.
- C. Product/Materials Allowance: At the earliest feasible date after award of Contract, advise the Architect and Construction Manager of scheduled date when final selection and purchase of each product or system described by each Allowance must be accomplished in order to avoid delays in performance of the Work.
 - 1. As requested by the Architect, obtain and submit proposals for the work of each Allowance for use in making final selection; include recommendations for selection which are relevant to the proper performance of the Work.
 - 2. Purchase products and systems as specifically selected (in writing) by the Architect.
 - 3. Submit proposals and recommendations, for purchase of products or systems of Allowances, in form specified for Change Orders.
 - 4. When requested, submit a substantiated survey of quantities of materials, as shown in the "Schedule of Values", revised where necessary, and corresponding with Change Order quantities.
 - 5. Amount of Allowance includes:
 - a. Net cost of product
 - b. Delivery to the site
 - c. Applicable taxes
 - 6. In addition to amount of Allowance, include in Bid, for inclusion in Contract Sum, Contractor's costs for:
 - a. Handling at site, including unloading, uncrating and storage
 - b. Protection from elements, from damage

- c. Labor, installation and finishing
 - d. Other expenses (e.g., testing, adjusting and balancing) required to complete installation
 - e. Overhead and profit
- D. Contingency Allowance: Contingency allowance shall be used only as directed for Owner's purposes. Proposal shall be submitted by Contractor for work requested in format similar to that required for Change Orders. Compensation to the Contractor for work requested utilizing this Allowance shall be for only Contractor's costs as defined by Paragraph 7.3.7 of the General Conditions, except no compensation shall be allowed for overhead and profit. At time of Project closeout, unused amounts remaining in contingency allowance shall be credited to Owner by Change Order.

PART 2 - PRODUCTS (Not Used)

PART 3 - EXECUTION

3.01 PRODUCT ALLOWANCE

- A. Not Used

3.02 CONTINGENCY ALLOWANCES

Allow a lump sum additional work required but not indicated on Drawings or reasonably anticipated.

A.	Bid Category No. 01 General Trades	\$65,000
B.	Bid Category No. 02 Structural Steel	\$20,000
C.	Bid Category No. 03 Masonry	\$25,000
D.	Bid Category No. 04 Roofing	\$10,000
E.	Bid Category No. 05 Aluminum Entrances & Storefronts	\$10,000
F.	Bid Category No. 06 Metal Framing, Drywall & Ceilings	\$30,000
G.	Bid Category No. 07 Floorcovering	\$20,000
H.	Bid Category No. 08 Fire Protection	\$10,000
I.	Bid Category No. 09 Plumbing & HVAC	\$40,000
J.	Bid Category No. 10 Electrical & Technology	\$40,000
K.	Bid Category No. 11 Lighting (Alternate 7)	N/A
L.	Bid Category No. 12 Site Demolition, Earthwork & Site Utilities	\$30,000

END OF SECTION 01 21 00

SECTION 01 23 00 - ALTERNATES

PART 1 - GENERAL

1.01 RELATED DOCUMENTS

- A. Drawings and general provisions of the Contract, including amended General Conditions and other Division 1 Specification Sections, apply to work of this Section.

1.02 PURPOSE

- A. The Bids for the Alternates described herein are required in order for the Owner to obtain information necessary for the proper consideration of the Project in its entirety.

1.03 ALTERNATES

- A. Definitions: Alternates are defined as alternate products, materials, equipment, installations or systems for the Work, which may, at Owner's option and under terms established by Instructions to Bidders, be selected and recorded in the Owner-Contractor Agreement to either supplement or displace corresponding basic requirements of Contract Documents. Alternates may or may not substantially change scope and general character of the Work; and must not be confused with "allowances", "unit prices", "change orders", "substitutions", and other similar provisions.

1.04 SCHEDULE OF ALTERNATES

- A. **ALTERNATE NO. 1:** Mill and resurface existing asphalt parking areas on South side of building. Reference alternate bid item note 1 on sheets C-100 and C-101.
- B. **ALTERNATE NO. 2:** Mill and resurface existing asphalt drives. Reference alternate bid item note 2 on sheets C-100 and C-101.
- C. **ALTERNATE NO. 3:** NOT USED
- D. **ALTERNATE NO. 4:** Provide Gymnasium divider curtain.
- E. **ALTERNATE NO. 5:** Remove and replace corridor carpet/wall base as referenced in floor finish plan note 18.

- F. **ALTERNATE NO. 6:** Replace existing controls on Major Air Handling Units as Referenced in “Controls Network Panel and Communications Diagram” on sheet M-801.
- G. **ALTERNATE NO. 7:** Base Bid: No Work. Alternate Bid: Provide fixture types L-1, L-1E, L-2, L-2E, L-3, L-3E, L-4, L-4E, L-5, L-5E, X-1E, X-2E, and X-3 Work shall include support to structure and final terminations of these light fixtures using the specified manufacturers as indicated on Drawing E-601.
- H. **ALTERNATE NO. 8:** Lime Stabilize new asphalt pavement areas as referenced In alternate bid item note 4 on sheet C-101.

PART 2 - PRODUCTS, PART 3 - EXECUTION (Not Used)

END OF SECTION 01 23 00

ADDENDUM FOUR

Addendum Four (AD.04) to the drawings and specifications prepared by Gibraltar Design and The Skillman Corporation for **Edgewood Intermediate School Additions and Renovations** for Franklin Township Community School Corporation, Indianapolis, Indiana.

All Contractors bidding on this project shall read all of the items covered below and shall comply with all of the requirements as set forth, including any necessary refinements or additions generated by this Addendum, and required by the intent of the original contract documents. All Contractors shall acknowledge on their bid form that they have received this Addendum, Addendum One and Addendum Two, and include the appropriate content of same within their bid proposal.

SPECIFICATIONS

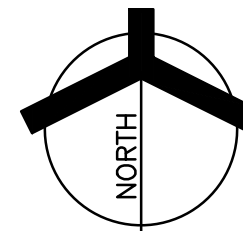
1. **Specification Section 08 71 00** **Door Hardware**
 - A. Add Door K-113H to Hardware Set No. 25.
 - B. Remove Door K-113H from Hardware Set No. 23.

DRAWINGS

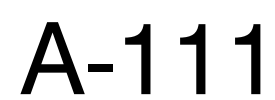
1. **Sheets A-111**
 - A. Refer to revised full size drawing, included in this Addendum, for locker type in Boys Locker K-105 and Girls Locker K-106 see Sheet A-420.
2. **Sheet A-730**
 - A. Refer to revised full size drawing, included in this Addendum for revisions.
3. **Sheet A-601**
 - A. Refer to revised full size drawing, included in this Addendum for revisions.

Pages 1 inclusive, and Three (3) Full-Size Drawings constitute the total makeup of **Addendum Four**.



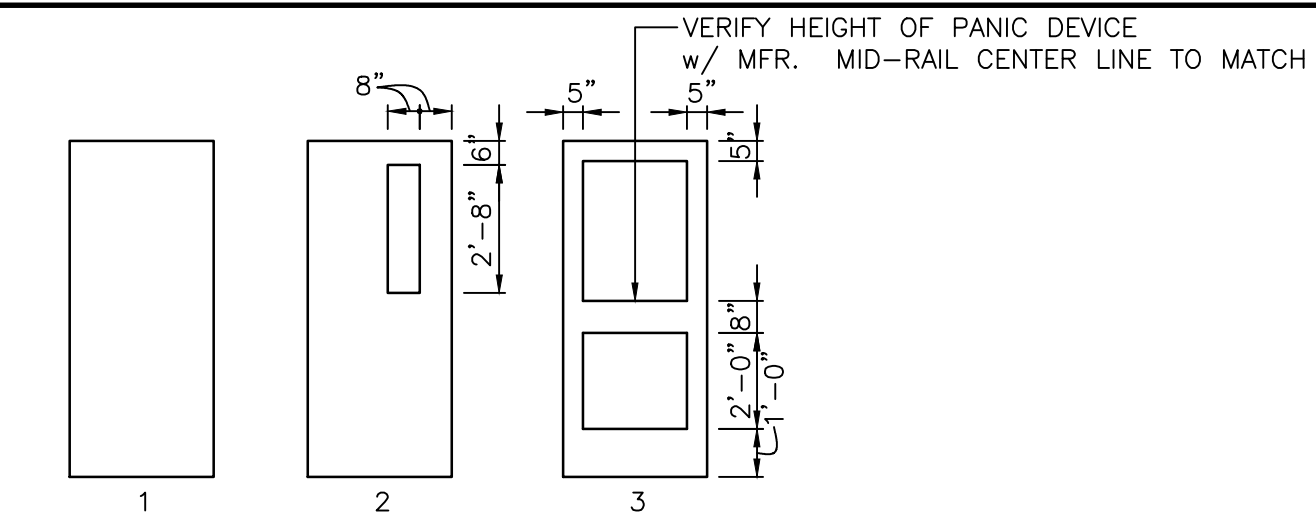


SCALE: 1/8" = 1'-0"



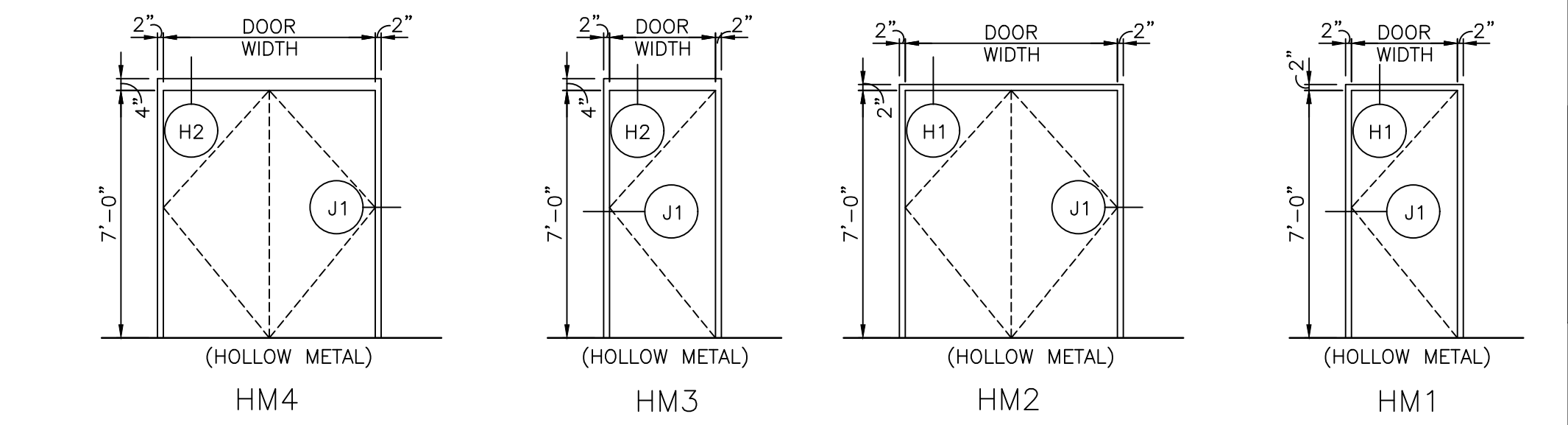
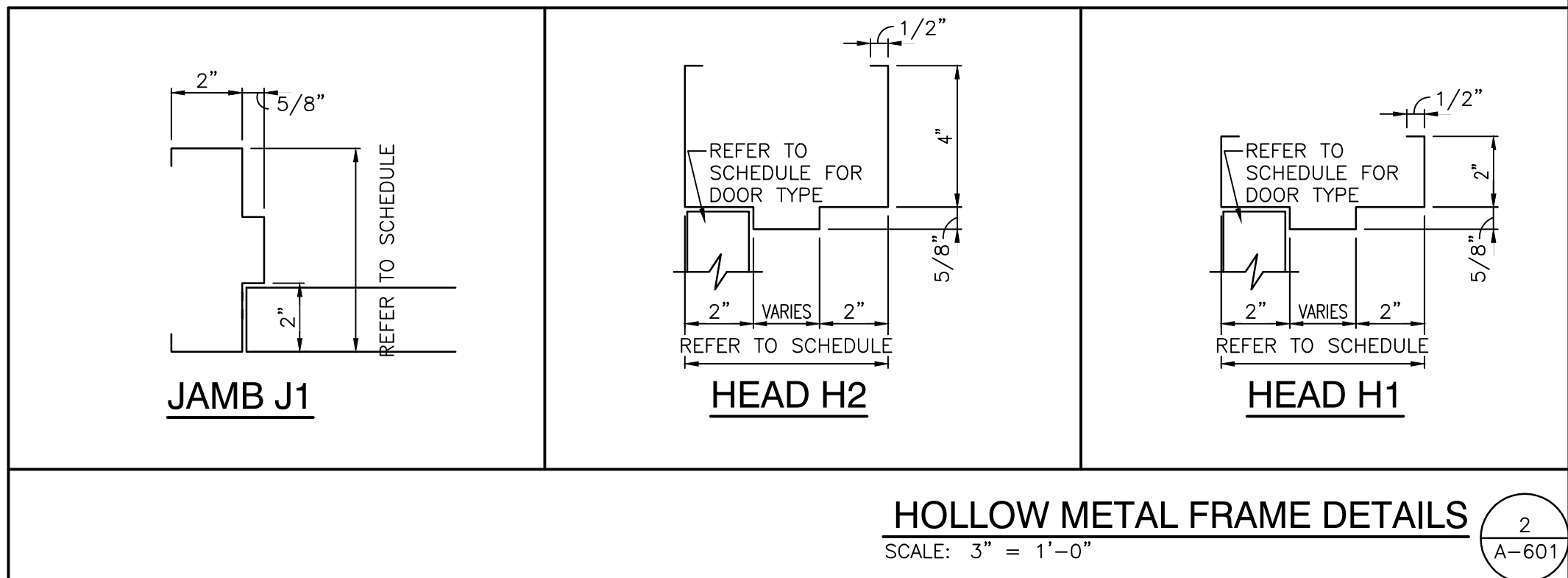
Thursday, 7/7/2022 - 1:32 PM - LAST SAVED BY: JHARRIS
 \X:\21-155 FRANKLIN TOWNSHIP CSC-EDGEWOOD IS
 ADDITIONS AND RENOVATIONS\21-155 DRAWINGS\05
 ARCH\A-111.DWG

GLASS SCHEDULE	
MK	GLASS TYPES
A	1/4" CLEAR TEMPERED
B	1" GRAY INSUL. GLASS



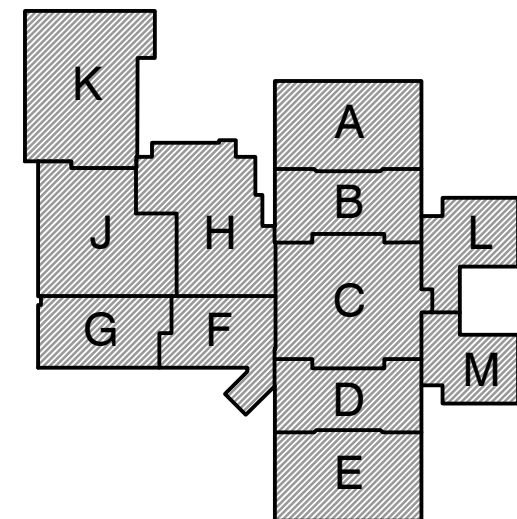
LOUVER SCHEDULE	
MK	LOUVER SIZE

DOOR AND FRAME SCHEDULE														DOOR AND FRAME SCHEDULE															
DOOR			GLASS			FRAME			HARDWARE			NOTES	DOOR			GLASS			FRAME			HARDWARE			NOTES				
NO	DESCRIPTION	TYPE	DOOR SIZE (WxH) (INCHES)	MATERIAL	LOU	DOOR SIDE LGT	TRA	MAT'L	WIDTH	JAMB	HEAD		SILL	ELEV	NO	DESCRIPTION	TYPE	DOOR SIZE (WxH) (INCHES)	MATERIAL	LOU	DOOR SIDE LGT	TRA	MAT'L	WIDTH		JAMB	HEAD	SILL	ELEV
K-119A	DOUBLE	1	PR 36 x 84	WD				HM	8 3/4"	SEE ELEV	SEE ELEV	SEE ELEV	HM4																
K-120A	SINGLE	1	36 x 84	WD				HM	8 3/4"	SEE ELEV	SEE ELEV	SEE ELEV	HM1																
L-101A	DOUBLE	3	PR 36 x 84	AL		B	B	B	AL	4 1/2"	SEE ELEV	SEE ELEV	SEE ELEV	SF1															
L-101B	DOUBLE	3	PR 36 x 84	AL		A	A	A	AL	4 1/2"	SEE ELEV	SEE ELEV	SEE ELEV	SF1															
L-103A	SINGLE	2	36 x 84	WD		A		HM	8 3/8"	SEE ELEV	SEE ELEV	SEE ELEV	HM1																
L-104A	SINGLE	2	36 x 84	WD		A		HM	8 3/8"	SEE ELEV	SEE ELEV	SEE ELEV	HM1																
L-105A	SINGLE	2	36 x 84	WD		A		HM	8 3/8"	SEE ELEV	SEE ELEV	SEE ELEV	HM1																
L-106A	SINGLE	2	36 x 84	WD		A		HM	8 3/8"	SEE ELEV	SEE ELEV	SEE ELEV	HM1																
L-107A	SINGLE	2	36 x 84	WD		A		HM	8 3/8"	SEE ELEV	SEE ELEV	SEE ELEV	HM1																
L-108A	SINGLE	2	36 x 84	WD		A		HM	8 3/8"	SEE ELEV	SEE ELEV	SEE ELEV	HM1																
L-109A	DOUBLE	3	PR 36 x 84	AL		B	B	B	AL	4 1/2"	SEE ELEV	SEE ELEV	SEE ELEV	SF3															
L-109B	DOUBLE	3	PR 36 x 84	AL		B	B	B	AL	4 1/2"	SEE ELEV	SEE ELEV	SEE ELEV	SF3															
L-109C	DOUBLE	3	PR 36 x 84	AL		A	A	A	AL	4 1/2"	SEE ELEV	SEE ELEV	SEE ELEV	SF3															
L-109D	DOUBLE	3	PR 36 x 84	AL		A	A	A	AL	4 1/2"	SEE ELEV	SEE ELEV	SEE ELEV	SF3															
L-111A	SINGLE	1	36 x 84	WD				HM	8 3/8"	SEE ELEV	SEE ELEV	SEE ELEV	HM1																
L-112A	DOUBLE	1	PR 36 x 84	WD				HM	8 3/8"	SEE ELEV	SEE ELEV	SEE ELEV	HM2																
L-114A	SINGLE	2	36 x 84	WD		A		HM	8 3/8"	SEE ELEV	SEE ELEV	SEE ELEV	HM1																
L-116A	DOUBLE	3	PR 36 x 84	AL		B	B	B	AL	4 1/2"	SEE ELEV	SEE ELEV	SEE ELEV	SF2															
L-116B	DOUBLE	3	PR 36 x 84	AL		B	B	B	AL	4 1/2"	SEE ELEV	SEE ELEV	SEE ELEV	SF2															
L-116C	DOUBLE	3	PR 36 x 84	AL		B	B	B	AL	4 1/2"	SEE ELEV	SEE ELEV	SEE ELEV	SF2															
L-116D	DOUBLE	3	PR 36 x 84	AL		A	A	A	AL	4 1/2"	SEE ELEV	SEE ELEV	SEE ELEV	SF2															
L-116E	DOUBLE	3	PR 36 x 84	AL		A	A	A	AL	4 1/2"	SEE ELEV	SEE ELEV	SEE ELEV	SF2															
L-116F	DOUBLE	3	PR 36 x 84	AL		A	A	A	AL	4 1/2"	SEE ELEV	SEE ELEV	SEE ELEV	SF2															
M-101A	DOUBLE	3	PR 36 x 84	AL		B	B	B	AL	4 1/2"	SEE ELEV	SEE ELEV	SEE ELEV	SF1															
M-101B	DOUBLE	3	PR 36 x 84	AL		A	A	A	AL	4 1/2"	SEE ELEV	SEE ELEV	SEE ELEV	SF1															
M-103A	SINGLE	2	36 x 84	WD		A		HM	8 3/8"	SEE ELEV	SEE ELEV	SEE ELEV	HM1																
M-104A	SINGLE	2	36 x 84	WD		A		HM	8 3/8"	SEE ELEV	SEE ELEV	SEE ELEV	HM1																
M-105A	SINGLE	2	36 x 84	WD		A		HM	8 3/8"	SEE ELEV	SEE ELEV	SEE ELEV	HM1																
M-106A	SINGLE	2	36 x 84	WD		A		HM	8 3/8"	SEE ELEV	SEE ELEV	SEE ELEV	HM1																
M-107A	SINGLE	2	36 x 84	WD		A		HM	8 3/8"	SEE ELEV	SEE ELEV	SEE ELEV	HM1																
M-108A	SINGLE	2	36 x 84	WD		A		HM	8 3/8"	SEE ELEV	SEE ELEV	SEE ELEV	HM1																
M-109A	DOUBLE	3	PR 36 x 84	AL		B	B	B	AL	4 1/2"	SEE ELEV	SEE ELEV	SEE ELEV	SF3															
M-109B	DOUBLE	3	PR 36 x 84	AL		B	B	B	AL	4 1/2"	SEE ELEV	SEE ELEV	SEE ELEV	SF3															
M-109C	DOUBLE	3	PR 36 x 84	AL		A	A	A	AL	4 1/2"	SEE ELEV	SEE ELEV	SEE ELEV	SF3															
M-109D	DOUBLE	3	PR 36 x 84	AL		A	A	A	AL	4 1/2"	SEE ELEV	SEE ELEV	SEE ELEV	SF3															
M-111A	SINGLE	1	36 x 84	WD				HM	8 3/8"	SEE ELEV	SEE ELEV	SEE ELEV	HM1																
M-112A	SINGLE	1	36 x 84	WD				HM	8 3/8"	SEE ELEV	SEE ELEV	SEE ELEV	HM1																
M-113A	SINGLE	1	36 x 84	WD				HM	8 3/8"	SEE ELEV	SEE ELEV	SEE ELEV	HM1																
M-115A	SINGLE	2	36 x 84	WD		A		HM	8 3/8"	SEE ELEV	SEE ELEV	SEE ELEV	HM1																
K-202A	DOUBLE	1	PR 36 x 84	AL				AL	4 1/2"	SEE ELEV	SEE ELEV	SEE ELEV	SF8																
K-203A	SINGLE	1	36 x 84	WD				HM	8 3/4"	SEE ELEV	SEE ELEV	SEE ELEV	HM1																
DOOR SCHEDULE NOTES (REMARKS):														DOOR SCHEDULE NOTES (REMARKS):															
1. PANIC DEVICE TO HAVE ELECTRIC LATCH BOLT. PREPARE FRAME FOR ELECTRIFIED HINGE.														1. PANIC DEVICE TO HAVE ELECTRIC LATCH BOLT. PREPARE FRAME FOR ELECTRIFIED HINGE.															
2. DOOR TO BE CONTROLLED BY CARD READER/FOB. REFER TO ELECTRICAL DRAWINGS FOR ROUGH IN.														2. DOOR TO BE CONTROLLED BY CARD READER/FOB. REFER TO ELECTRICAL DRAWINGS FOR ROUGH IN.															
3. PROVIDE POWER ASSISTED OPERATOR ON ONE LEAF OF DOUBLE DOORS.														3. PROVIDE POWER ASSISTED OPERATOR ON ONE LEAF OF DOUBLE DOORS.															
4. PROVIDE SOUND CASKETING SEALS.														4. PROVIDE SOUND CASKETING SEALS.															
5. KEYED REMOVABLE MULLION.														5. KEYED REMOVABLE MULLION.															
														C-133A SINGLE 1 20 x 84 WD 5 1/2" SEE ELEV SEE ELEV SEE ELEV HM1															
														C-133B SINGLE 1 20 x 84 WD 5 1/2" SEE ELEV SEE ELEV SEE ELEV HM1															
														C-134A SINGLE 1 36 x 84 WD 8 3/8" SEE ELEV SEE ELEV SEE ELEV HM1															
														C-135A SINGLE 1 20 x 84 WD 5 1/2" SEE ELEV SEE ELEV SEE ELEV HM1															
														C-135B SINGLE 1 20 x 84 WD 5 1/2" SEE ELEV SEE ELEV SEE ELEV HM1															
														C-136A SINGLE 1 36 x 84 WD 8 3/8" SEE ELEV SEE ELEV SEE ELEV HM1															
														H-122A SINGLE 1 36 x 84 WD 8 3/4" SEE ELEV SEE ELEV SEE ELEV HM3															
														H-138A SINGLE 1 36 x 84 AL 4 1/2" SEE ELEV SEE ELEV SEE ELEV SF5															
														H-138B DOUBLE 1 PR 42 x 84 AL 4 1/2" SEE ELEV SEE ELEV SEE ELEV SF4															
														J-107A SINGLE 1 20 x 84 WD 5 1/2" SEE ELEV SEE ELEV SEE ELEV HM1															
														J-108A SINGLE 1 20 x 84 WD 5 1/2" SEE ELEV SEE ELEV SEE ELEV HM1															
														J-132A DOUBLE 3 PR 42 x 84 WD 8 3/4" SEE ELEV SEE ELEV SEE ELEV HM2															
														K-101A DOUBLE 3 PR 36 x 84 AL 4 1/2" SEE ELEV SEE ELEV SEE ELEV SF7															
														K-101B DOUBLE 3 PR 36 x 84 AL 4 1/2" SEE ELEV SEE ELEV SEE ELEV SF7															
														K-101C DOUBLE 3 PR 36 x 84 AL 4 1/2" SEE ELEV SEE ELEV SEE ELEV SF7															
														K-101D DOUBLE 3 PR 36 x 84 AL 4 1/2" SEE ELEV SEE ELEV SEE ELEV SF7															
														K-103A SINGLE 1 20 x 84 WD 5 1/2" SEE ELEV SEE ELEV SEE ELEV HM1															
														K-105A SINGLE 1 36 x 84 WD 8 3/4" SEE ELEV SEE ELEV SEE ELEV HM3															
														K-105B SINGLE 1 36 x 84 AL 4 1/2" SEE ELEV SEE ELEV SEE ELEV SF5															
														K-106A SINGLE 1 36 x 84 WD 8 3/4" SEE ELEV SEE ELEV SEE ELEV HM3															
														K-106B SINGLE 1 36 x 84 AL 4 1/2" SEE ELEV SEE ELEV SEE ELEV SF5															
														K-106C SINGLE 1 20 x 84 WD 5 1/2" SEE ELEV SEE ELEV SEE ELEV HM1															
														K-107A SINGLE 1 36 x 84 WD 8 3/4" SEE ELEV SEE ELEV SEE ELEV HM3															
														K-108A SINGLE 1 36 x 84 WD 8 3/4" SEE ELEV SEE ELEV SEE ELEV HM3															
														K-109A DOUBLE 1 PR 36 x 84 WD 8 3/4" SEE ELEV SEE ELEV SEE ELEV HM4															
														K-109B SINGLE 1 36 x 84 AL 4 1/2" SEE ELEV SEE ELEV SEE ELEV SF5															
														K-110A DOUBLE 3 PR 36 x 84 AL 4 1/2" SEE ELEV SEE ELEV SEE ELEV SF6															
														K-110B DOUBLE 3 PR 36 x 84 AL 4 1/2" SEE ELEV SEE ELEV SEE ELEV SF6															
														K-113A DOUBLE 2 PR 36 x 84 WD 5 3/4" SEE ELEV SEE ELEV SEE ELEV HM4															
														K-113B DOUBLE 2 PR 36 x 84 WD 5 3/4" SEE ELEV SEE ELEV SEE ELEV HM4															
														K-113C DOUBLE 2 PR 36 x 84 WD 5 3/4" SEE ELEV SEE ELEV SEE ELEV HM4															
														K-113D DOUBLE 2 PR 36 x 84 WD 5 3/4" SEE ELEV SEE ELEV SEE ELEV HM4															
														K-113E DOUBLE 2 PR 36 x 84 WD 5 3/4" SEE ELEV SEE ELEV SEE ELEV HM4															
														K-113F DOUBLE 2 PR 36 x 84 WD 5 3/4" SEE ELEV SEE ELEV SEE ELEV HM4															
														K-113G DOUBLE 2 PR 36 x 84 WD 5 3/4" SEE ELEV SEE ELEV SEE ELEV HM4															
														K-113H DOUBLE 2 PR 36 x 84 WD 5 3/4" SEE ELEV SEE ELEV SEE ELEV HM4															
														K-114A DOUBLE 3 PR 36 x 84 AL 4 1/2" SEE ELEV SEE ELEV SEE ELEV SF6															
														K-114B DOUBLE 3 PR 36 x 84 AL 4 1/2" SEE ELEV SEE ELEV SEE ELEV SF6															
														K-115A SINGLE 2 36 x 84 WD 8 3/4" SEE ELEV SEE ELEV SEE ELEV HM3															
														K-115B DOUBLE 2 PR 36 x 84 WD 5 3/4" SEE ELEV SEE ELEV SEE ELEV HM4															
														K-115C SINGLE 1 36 x 84 AL 4 1/2" SEE ELEV SEE ELEV SEE ELEV SF5															
														K-116A DOUBLE 1 PR 36 x 84 WD 8 3/4" SEE ELEV SEE ELEV SEE ELEV HM4															
														K-117A SINGLE 2 36 x 84 WD 8 3/4" SEE ELEV SEE ELEV SEE ELEV HM3															
														K-117B SINGLE 2 36 x 84 WD 8 3/4" SEE ELEV SEE ELEV SEE ELEV HM3															
														K-118A SINGLE 1 36 x 84 WD 8 3/4" SEE ELEV SEE ELEV SEE ELEV HM3															



GIBRALTAR
DESIGN
ARCHITECTURE • ENGINEERING • INTERIOR DESIGN

PROJECT
ADDITIONS AND
RENOVATIONS TO
**EDGEWOOD
INTERMEDIATE
SCHOOL**
FRANKLIN TOWNSHIP COMMUNITY
SCHOOL CORPORATION
INDIANAPOLIS, INDIANA



FIRST FLOOR KEY PLAN

GIBRALTAR DESIGN
9102 N. Meridian St., Ste. 300
Indianapolis, IN 46260
Homepage: www.GibraltarDesign.com
Email: info@GibraltarDesign.com
Phone: 317.580.5777 Fax: 317.580.5778

PROJECT
21-155
DATE
05/23/22
COORDINATED BY
DJW
DRAWN BY
BB NW
CHECKED BY
DJW

COPYRIGHT NOTICE:
THE CONCEPTS, DESIGNS, PLANS, DETAILS, ETC., SHOWN ON
THIS DOCUMENT ARE THE PROPERTY OF GIBRALTAR DESIGN AND
WILL BE USED BY ANY PERSON OR FIRM FOR ANY PURPOSE WITHOUT THE EXPRESS WRITTEN CONSENT
OF GIBRALTAR DESIGN. THE OWNER MAY RETAIN COPIES FOR
INFORMATION AND REFERENCE IN CONNECTION ONLY WITH THIS
PROJECT.

REVISIONS		
MARK	DATE	ISSUED FOR
AD-2	06/23/22	ADDENDUM NO. 2
AD-4	07/07/22	ADDENDUM NO. 4

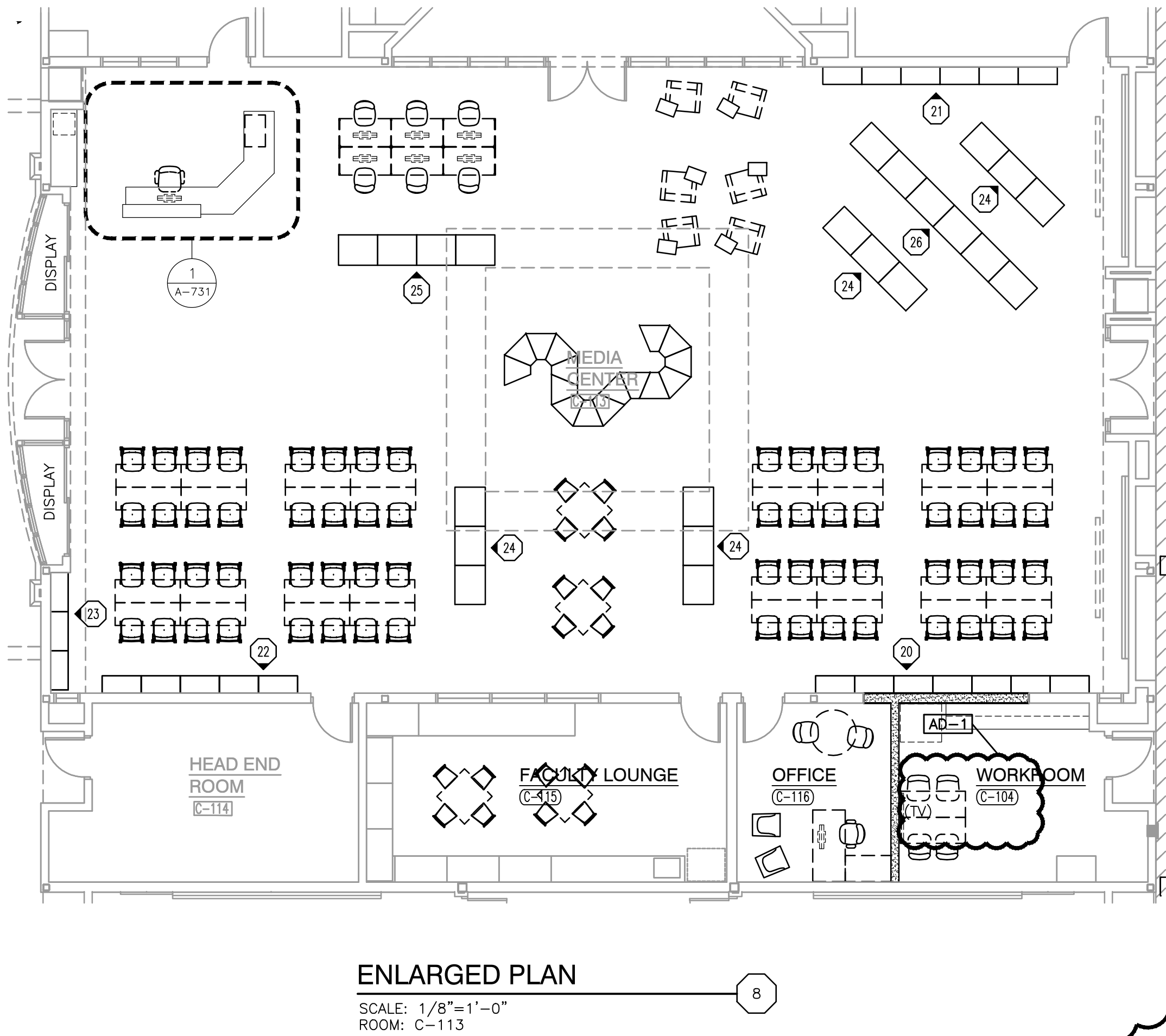
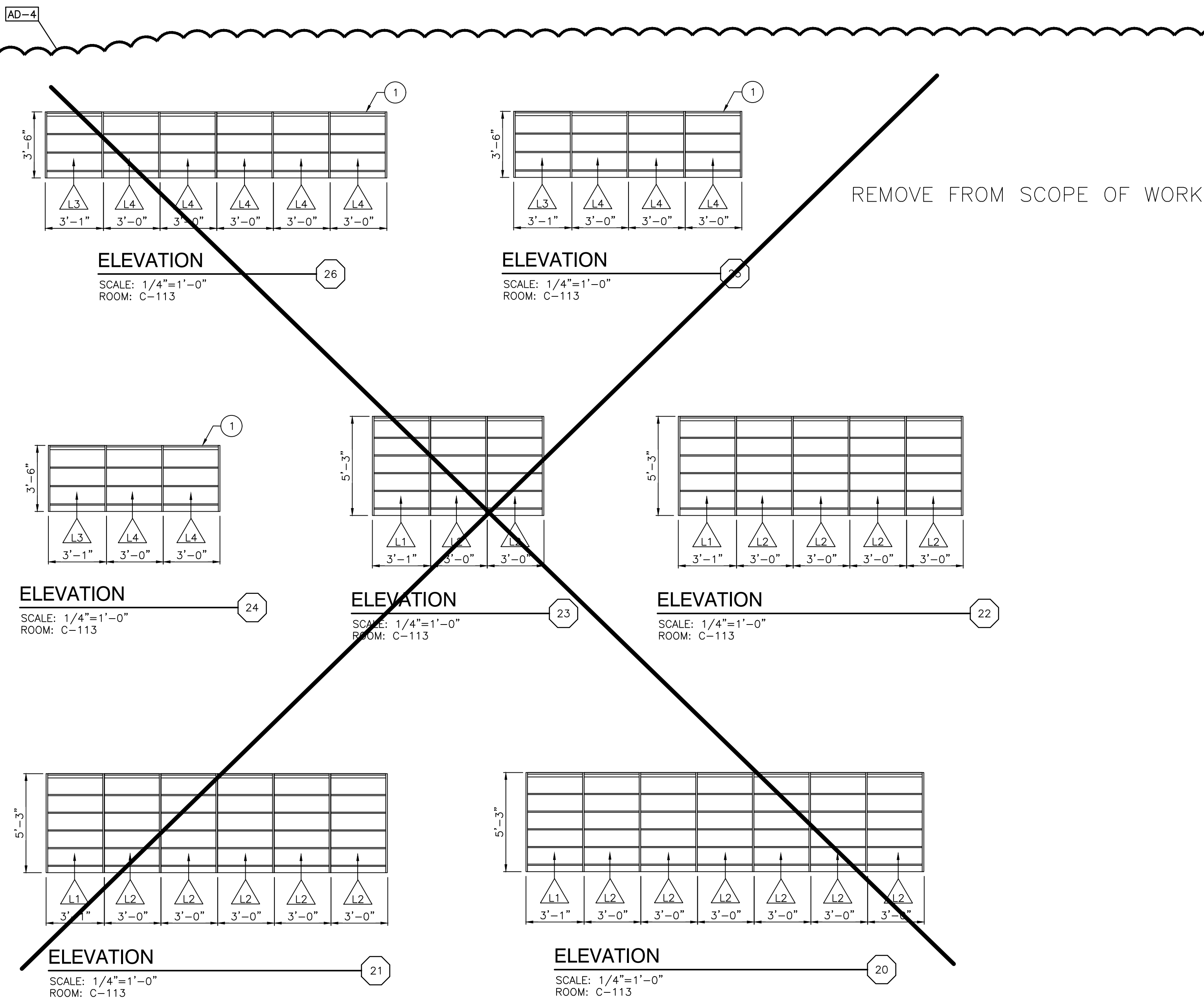
DRAWING
**DOOR SCHEDULE, FRAME
PROFILES, ELEVATIONS, AND
DETAILS**

PROJECT
ADDITIONS AND RENOVATIONS TO
EDGEWOOD INTERMEDIATE SCHOOL

© GIBRALTAR DESIGN SHEET

A-601

Thursday, 7/7/2022 - 3:10 PM - LAST SAVED BY:EMCQUEEN
Y:\21-155 FRANKLIN TOWNSHIP CSC-EDGEWOOD IS
ADDITIONS AND RENOVATIONS\21-155 DRAWINGS\05
ARCH\A-730.DWG



MEDIA CENTER WOOD SHELVING SCHEDULE

MARK	CATALOG NUMBER	WIDTH	DESCRIPTION
L1	WS3112	37"	12"D X 63"H, SINGLE FACE STARTER UNIT
L2	WS612A	36"	12"D X 63"H, SINGLE FACE ADDER UNIT
L3	WS421	37"	12"D X 42"H, DOUBLE FACE STARTER UNIT
L4	WS422	36"	12"D X 42"H, DOUBLE FACE ADDER UNIT

MEDIA SHELVING GENERAL NOTES

- A. REFER TO ENLARGED PLAN FOR SHELVING LOCATIONS AND ADDITIONAL INFORMATION. REFER TO FINISH LEGEND ON A-300 FOR FINISH INFORMATION.
- B. FOR SCHEDULING PURPOSES ONLY, ALL MODEL NUMBERS HAVE BEEN TAKEN FROM WORDEN COMPANY. SEE SPECIFICATIONS FOR CONSTRUCTION METHODS.
- C. FIELD VERIFY ALL DIMENSIONS.
- D. VERIFY ALL DIMENSIONS WITH THE MANUFACTURER.
- E. ALL SHELVING IN ALL TYPES OF UNITS IN THE MEDIA CENTER SHALL BE WOOD.
- F. FILLER PANELS, TRIM, AND MOLDING PROVIDED SHALL BE CONTINUOUS AS NECESSARY TO MAKE SHELVING CONTINUOUS TO ADJACENT PARTITION. SHELVING MANUFACTURER/INSTALLER SHALL PROVIDE ALL FILLERS AND SCRIBES AS REQUIRED FOR A COMPLETE AND FINISHED SHELVING INSTALLATION.
- G. ALL ADJOINING CABINETS SHALL BE ALIGNED.
- H. ALL EXPOSED ENDS ARE TO BE FINISHED.
- I. WHERE SHIMMING IS REQUIRED, ONLY APPROVED METAL SHIMS SHALL BE USED.
- J. ALL SHELVING SHALL BE PROVIDED WITH WOOD BACKS AND ENDS TO MATCH THE SHELVING.
- K. ALL EDGES OF SHELVING SHALL BE SELECTED FROM MANUFACTURER'S STANDARD OPTIONS.
- L. ALIGN FRONTS OF ALL SHELVES.
- M. PROVIDE 4" HIGH TOE SPACE ON ALL SHELVING UNITS.
- N. PROVIDE PARTITIONS FOR ALL DOUBLE FACE SHELVING UNITS.

KEY NOTES (APPLIES TO MEDIA CENTER SHELVING)

1. CONTINUOUS PLASTIC LAMINATE TOP, PL7 WITH 3MM PVC EDGE.

PLASTIC LAMINATE CASEWORK SCHEDULE

MARK	CATALOG NUMBER	WIDTH	DESCRIPTION
B1	10441	42"	24"D X 32"H TWO DOOR, TWO DRAWER WITH ADJUSTABLE SHELF
B2	10129	36"	24"D X 29"H TWO DOOR WITH ADJUSTABLE SHELF
B3	10129	33"	24"D X 29"H TWO DOOR WITH ADJUSTABLE SHELF
W1	16129	42"	14"D X 30"H TWO DOOR WITH ADJUSTABLE SHELVES, LOCKABLE
T1	26618	36"	24"D X 84"H WARDROBE (RIGHT SIDE MIRROR)
T2	26129	36"	24"D X 84"H TWO DOOR WITH ADJUSTABLE SHELVES
T3	26617	36"	24"D X 84"H WARDROBE (LEFT SIDE MIRROR)

GENERAL NOTES (APPLIES TO PLASTIC LAMINATE CASEWORK)

- A. REFER TO EQUIPMENT PLANS FOR CASEWORK LOCATIONS AND FINISH LEGEND IN "A-800" SERIES DRAWINGS FOR FINISH INFORMATION. REFER TO SPECIFICATIONS FOR ADDITIONAL INFORMATION.
- B. FOR SCHEDULING PURPOSES ONLY, MODEL NUMBERS ARE TAKEN FROM STEVENS INDUSTRIES, INC. (UNLESS NOTED OTHERWISE) AND ARE FOR CABINET REQUIREMENTS ONLY. SEE SPECIFICATIONS FOR CABINET CONSTRUCTION METHODS.
- C. VERIFY ALL PLAN AND CASEWORK DIMENSIONS WITH CASEWORK MANUFACTURER.
- D. ALL COUNTERTOPS TO BE PLASTIC LAMINATE WITH 4" HIGH PLASTIC LAMINATE BACKSPLASH AND/OR ENDSPLASH AT ALL LOCATIONS WHERE COUNTERTOP MEETS ADJACENT SURFACE (UNLESS NOTED OTHERWISE).
- E. PROVIDE 3MM PVC EDGE ON ALL PLASTIC LAMINATED COUNTERTOPS AND BACKSPLASHES.
- F. PROVIDE A 4" HIGH TOE SPACE ON ALL BASE AND FULL HEIGHT CABINETS.
- G. ALL EXPOSED CASEWORK SURFACES TO BE PLASTIC LAMINATE FINISHED, INCLUDING OPEN INTERIORS OF CABINETS (UNLESS NOTED OTHERWISE).
- H. ALL EXPOSED CASEWORK ENDS SHALL BE FINISHED TO MATCH CASEWORK FRONTS.
- I. PROVIDE CONTINUOUS PLASTIC LAMINATE SLOPED TOPS ON ALL WALL AND FULL HEIGHT CABINETS (UNLESS OTHERWISE NOTED).
- J. FILLER PANELS, TRIM, AND MOLDING PROVIDED SHALL BE CONTINUOUS AS NECESSARY TO MAKE CASEWORK CONTINUOUS TO ADJACENT PARTITION, CEILING, AND/OR BULKHEAD. CASEWORK MANUFACTURER / INSTALLER SHALL PROVIDE ALL FILLERS AND SCRIBES AS REQUIRED FOR A COMPLETE AND FINISHED CASEWORK INSTALLATION.
- K. ALL ADJOINING CABINETS SHALL BE ALIGNED.
- L. WHERE CASEWORK REQUIRES SHIMMING, PROVIDE ONLY APPROVED METAL SHIMS.
- M. CABINETS LOCATED IN FRONT OF A PIPE CHASE SHALL HAVE REMOVABLE BACKS.
- N. PROVIDE JOINT SEALANT AT ALL JUNCTIONS OF CASEWORK / COUNTERTOPS WITH ADJACENT WALL OR CASEWORK.
- O. PROVIDE 4" HIGH VINYL COVE BASE AT ALL TOE SPACE AREAS AND AT EXPOSED SURFACES AND SIDES OF CABINETS ADJACENT TO TOE SPACES. BY FLOORING INSTALLER.
- P. REFER TO ELECTRICAL DRAWINGS AND SCHEDULES FOR DEVICE TYPES, HEIGHTS AND LOCATIONS.
- Q. REFER TO PLUMBING DRAWINGS AND SCHEDULES FOR FIXTURE TYPES AND LOCATIONS. REFER TO PLUMBING DRAWINGS FOR PLUMBING CONNECTIONS.
- R. ALL CUTTING, DRILLING AND PATCHING OF CASEWORK AND COUNTERTOPS AS REQUIRED FOR INSTALLATION OF PIPING OR CONDUIT SHALL BE BY CASEWORK MANUFACTURER / INSTALLER.
- S. REFER TO "G" SERIES SHEETS FOR MOUNTING HEIGHTS OF EQUIPMENT AND ACCESSORIES.
- T. ONLY WARDROBE CABINETS TO BE LOCKING.

KEY NOTES (APPLIES TO PLASTIC LAMINATE CASEWORK)

1. LINE OF FINISHED FLOOR
2. WALL LINE
3. CEILING LINE
4. NOT USED ----
5. PASS THRU WINDOW, REFER TO FLOOR PLAN
6. 4" TOE SPACE WITH VINYL BASE BY FLOORING INSTALLER
7. KNEE SPACE
8. SLOPED TOP (CONTINUOUS)
9. 25"D COUNTERTOP WITH 4" BACKSPLASH UNLESS NOTED OTHERWISE
10. 30"D COUNTERTOP WITH 4" BACKSPLASH AND SIDESPLASH UNLESS NOTED OTHERWISE
11. REFRIGERATOR, BY OWNER
12. MICROWAVE, BY OWNER
13. COFFEE MAKER, BY OWNER
14. FINISHED BACK/END PANEL
15. HOT DOG WARMER, BY OWNER
16. POPCORN MACHINE, BY OWNER
17. FILLER PANEL FINISHED TO MATCH FACE OF CABINETS
18. PRINTER, BY OWNER
19. METAL SUPPORT BRACKETS, BY CASEWORK INSTALLER
20. SUPPORT LEG, FINISH TO MATCH CASEWORK
21. 16"D PLASTIC LAMINATE COUNTERTOP WITH 4" BACKSPLASH UNLESS NOTED OTHERWISE
22. 14"D SOLID SURFACE COUNTERTOP.

GIBRALTAR DESIGN

9102 N. Meridian St., Ste. 300
Indianapolis, IN 46260
Homepage: www.GibraltarDesign.com
Email: info@GibraltarDesign.com
Phone: 317.580.5777 Fax: 317.580.5778

PROJECT
21-155
DATE
05/23/22

COORDINATED BY
DJW

DRAWN BY
EKM

CHECKED BY
NAS

COPYRIGHT NOTICE:
THE CONCEPTS, DESIGNS, PLANS, DETAILS, ETC. SHOWN ON THIS DOCUMENT ARE THE PROPERTY OF GIBRALTAR DESIGN AND WERE CREATED FOR USE ON THIS SPECIFIC PROJECT. NONE OF THIS INFORMATION SHALL BE USED BY ANY PERSON OR FIRM FOR ANY PURPOSE WITHOUT THE EXPRESS WRITTEN CONSENT OF GIBRALTAR DESIGN. THE OWNER MAY RETAIN COPIES FOR INFORMATION AND REFERENCE IN CONNECTION ONLY WITH THIS PROJECT.

REVISIONS

MARK	DATE	ISSUED FOR
AD-3	06/30/22	ADDENDUM NO.3
AD-4	07/07/22	ADDENDUM NO.4

DRAWING PLASTIC LAMINATE CASEWORK SCHEDULE AND ELEVATIONS

PROJECT
ADDITIONS AND RENOVATIONS TO
EDGEWOOD INTERMEDIATE SCHOOL

GIBRALTAR DESIGN SHEET

A-730



GIBRALTAR
DESIGN
ARCHITECTURE • ENGINEERING • INTERIOR DESIGN

PROJECT
ADDITIONS AND
RENOVATIONS TO
**EDGEWOOD
INTERMEDIATE
SCHOOL**
FRANKLIN TOWNSHIP COMMUNITY
SCHOOL CORPORATION
INDIANAPOLIS, INDIANA