

# **ADDENDUM NO. 1**

**September 23, 2022**

**TIPPECANOE VALLEY HIGH SCHOOL ADDITIONS & RENOVATIONS  
Akron, IN 46910**

**TO: ALL BIDDERS OF RECORD**

This Addendum forms a part of and modifies the Bidding Requirements, Contract Forms, Contract Conditions, the Specifications, and the Drawings dated September 9, 2022 by Fanning Howey Associates, Inc. Acknowledge receipt of the Addendum in the space provided on the Bid Form. Failure to do so may subject the Bidder to disqualification.

This Addendum consists of pages ADD 1-1 and attached Addendum No. 1 from Fanning Howey Associates, Inc. dated September 23, 2022 and consisting of 2 pages and 4 drawings.

ADDENDUM NO. 1

Tippecanoe Valley High School Additions and Renovations

Project No. 220158.00

Tippecanoe Valley School Corporation  
Akron, Indiana

Index of Contents

Addendum No. 1, 1 item, 1 page  
New Drawing Sheets: FP2.01, FP2.02, FP.02, and FP.03

Date: September 23, 2022

FANNING/HOWEY ASSOCIATES, INC.  
ARCHITECTS/ENGINEERS/CONSULTANTS



William E. Payne, AIA  
Indiana Registration No. 4169

TO: ALL BIDDERS OF RECORD

ADDENDUM NO. 1 to Drawings and Project Manual, dated September 6, 2022 for Tippecanoe Valley High School Additions and Renovations for Tippecanoe Valley School Corporation, 8343 South State Road 19, Akron, Indiana 46910; as prepared by Fanning/Howey Associates, Inc., Indianapolis, Indiana.  
This Addendum shall hereby be and become a part of the Contract Documents the same as if originally bound thereto.

The following clarifications, amendments, additions, revisions, changes, and modifications change the original Contract Documents only in the amount and to the extent hereinafter specified in this Addendum.

Each bidder shall acknowledge receipt of this Addendum in his proposal or bid.

NOTE: Bidders are responsible for becoming familiar with every item of this Addendum. (This includes miscellaneous items at the very end of this Addendum.)

RE: ALL BIDDERS

ITEM NO. 1. NEW DRAWING SHEETS

- A. Drawing Sheet No's: FP2.01 – First Floor Fire Protection Plan, FP2.02 – Second Floor Fire Protection Plan, FP.02 – Fire Suppression Details and Notes, and FP.03 – Fire Suppression Site Plan and Details, dated 9/23/2022 are included with and hereby made a part of this Addendum.

END OF ADDENDUM



- [illegible]

## FIRE PUMP ASSEMBLY PIPING DETAIL

FIRE PROTECTION EQUIPMENT SCHEDULE					
ITEM	MAKE & MODEL NUMBER (OR APPROVED EQUAL)	DESCRIPTION	CAPACITY	ELECTRICAL CHARACTERISTICS	NOTES
FIRE PUMP (FP-1)	ARMSTRONG 8 X 12 M VTF - 100 HP	CONSTANT SPEED DRIVE W/SOFT START CONTROLLER (SKID MOUNTED) VERTICAL TURBINE	750 GPM AT 100 PSI RISE	100 HP 460V/3PH	-
JOCKEY PUMP (JP-1)	ARMSTRONG VMS-01:16B	MULTISTAGE VERTICAL TURBINE	7.5 GPM AT 110 PSI RISE	2 HP 480V 3 PH	-
					-



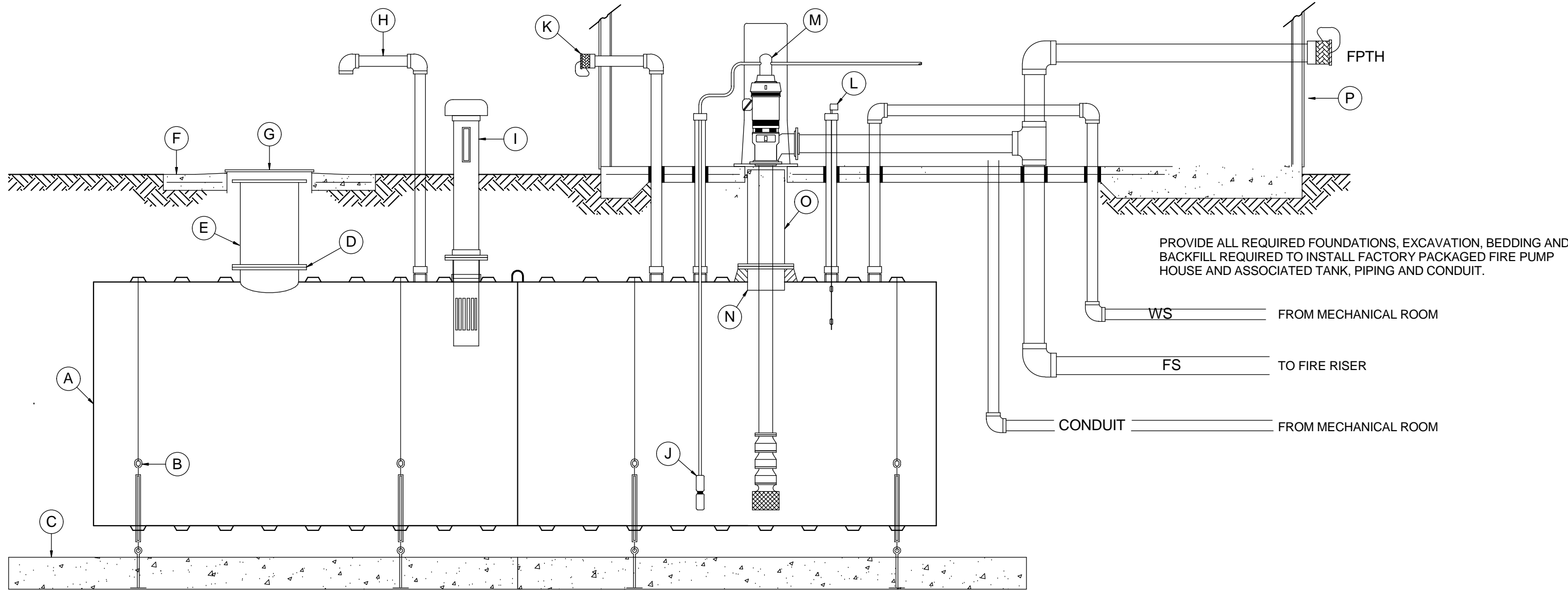
**3**  
N.T.S.

## FP.02

MARK		MARK	
A	50,000 GALLON FIRE SUPPRESSION WATER STORAGE TANK	I	10" NPT FITTING WITH VENT/LEVEL INDICATOR ASSEMBLY
B	HOLD DOWN STRAP & TURNBUCKLE ASSEMBLY	J	4" NPT FTG. w/ JOCKEY PUMP & GALVANIZED THREADED LINE
C	PRECAST DEADMAN ANCHOR WITH EYEBOLTS	K	4" NPT FTG. w/ NST REMOTE FILL OR RECIRCULATING POINT
D	FLANGED MANWAY	L	4" NPT FTG. w/ FLOAT SWITCH FOR HIGHLOW WATER ALARM
E	MANWAY EXTENSION	M	VERTICAL PUMP w/ DISCHARGE HEAD AND MULTI STAGE BOWL
F	H-20 AXLE LOAD CONCRETE APRON	N	14" FLANGED FRP NOZZLE
G	36" DIAMETER MANHOLE AND COVER	O	14" FLANGED FRP NOZZLE EXTENSION
H	6" TANK VENT	P	FACTORY ASSEMBLED PUMP BUILDING

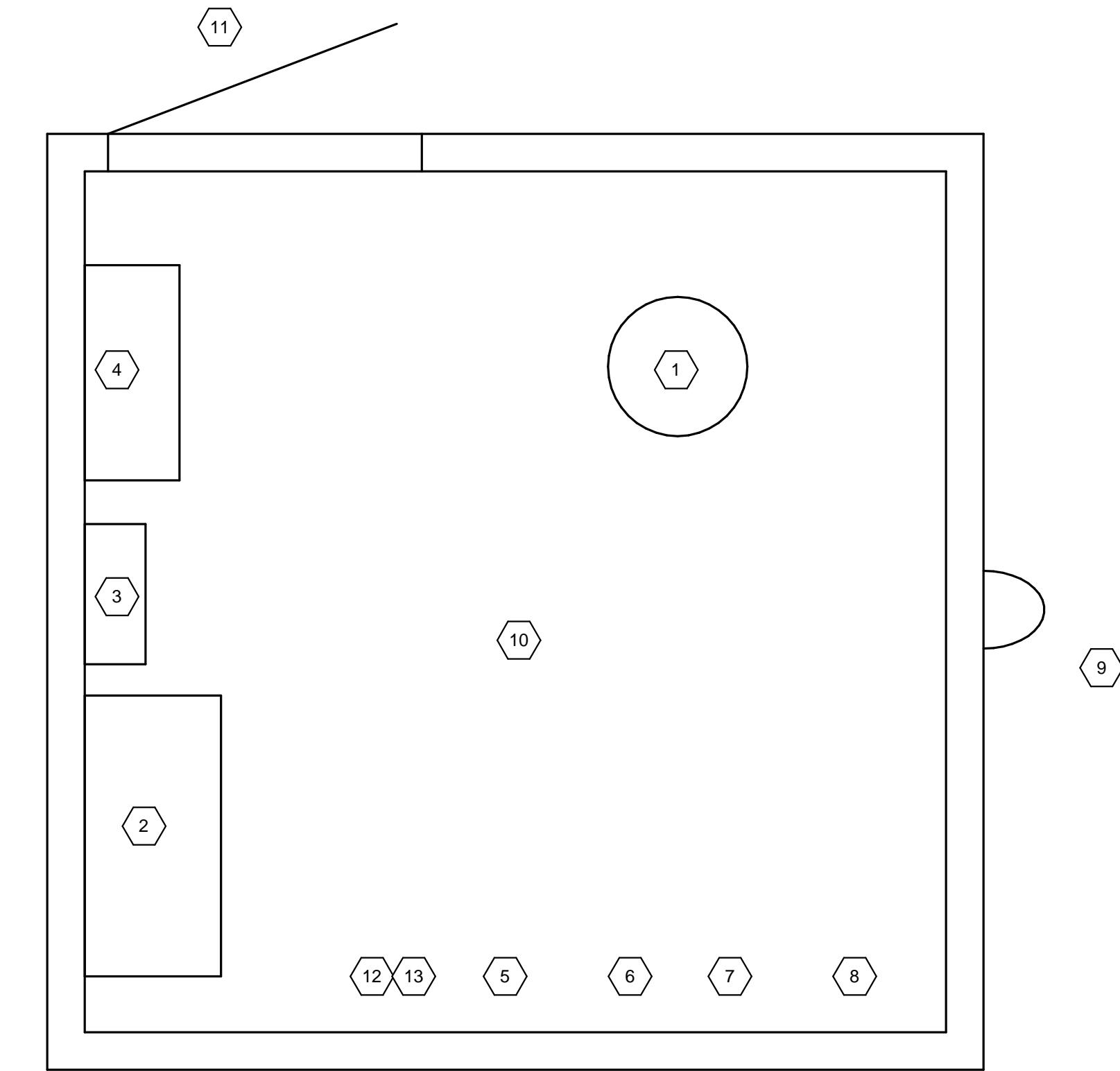
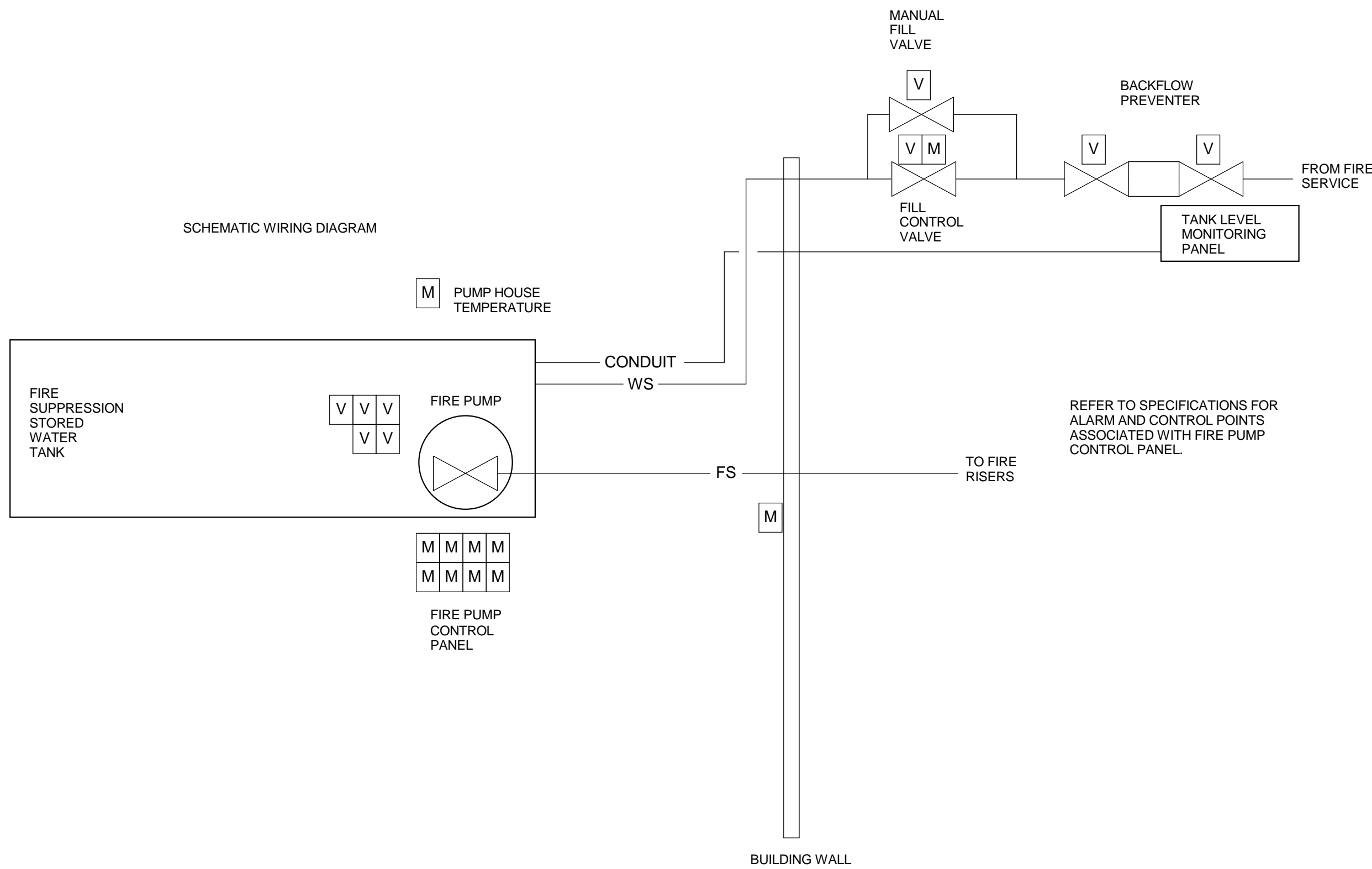
REFER TO ADDITIONAL DETAILS AND EQUIPMENT SUPPLIER DOCUMENTS FOR ADDITIONAL VALVES AND PIPING.

PROVIDE VALVED FIRE PUMP TEST FLOW METER BYPASS AND ASSOCIATED PIPING AND PENETRATION BACK INTO WATER STORAGE TANK.



QTY	TANK MONITORING AND CONTROL POINTS	FA	FA & TANK	TANK MONITORING	NOTES
2	TANK WATER LEVEL RESTORED (ELEV. SETPOINT) - CLOSE FILL VALVE		X		
1	TANK WATER LEVEL 6" BELOW SETPOINT - ACTUATE FILL VALVE			X	
2	TANK WATER LEVEL 12" BELOW SETPOINT		X		
1	PUMP HOUSE TEMPERATURE BELOW 40 DEGREE F.		X		
2	TANK OUTLET SHUT OFF VALVE SUPERVISION		X		
2	MANUAL TANK FILL BYPASS SHUT OFF VALVE SUPERVISION		X		

GENERAL NOTES  
ALARM POINTS INDICATED TO BE DISTRIBUTED TO THE FIRE ALARM SYSTEM SHALL BE BY MODULE/RELAY ATTACHMENT THAT IS LISTED AND COMPATIBLE WITH BUILDING FIRE ALARM SYSTEM.  
ALARM POINTS INDICATED TO BE DISTRIBUTED TO THE TANK MONITORING SYSTEM SHALL BE BY SENSORS AND/OR ADJUSTABLE COMPATIBLE WITH THE TANK MONITORING SYSTEM.  
CONTROL WIRING, CONDUIT, BEDDING, BACKFILL TO TANK FILL VALVE FROM TANK MONITORING SYSTEM SHALL BE INCLUDED IN SCOPE.



FIRE PUMP HOUSE ASSEMBLY PLAN

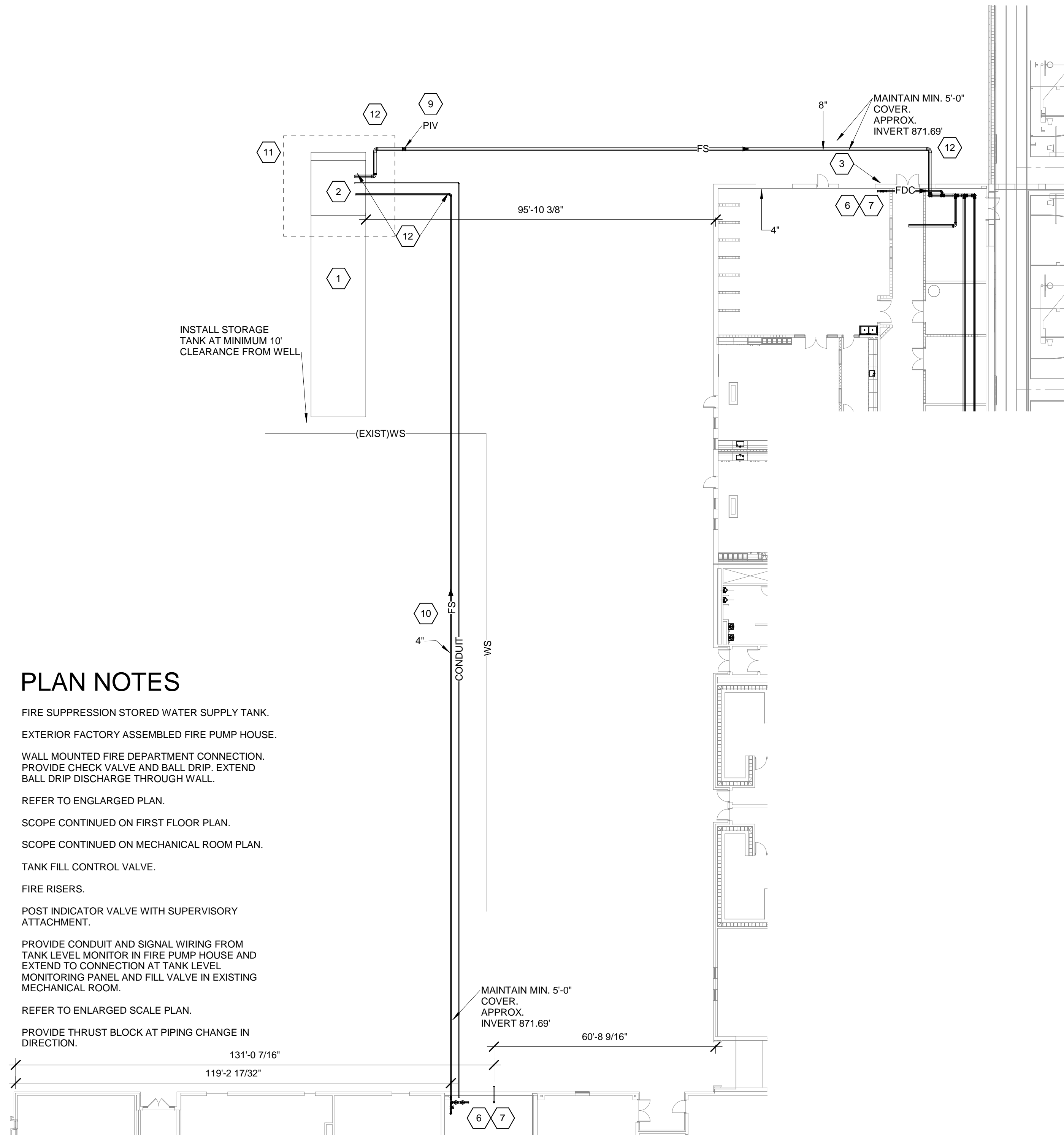
2  
N.T.S.

## PUMP HOUSE NOTES

- 1 VERTICAL TURBINE FIRE PUMP.
- 2 FIRE PUMP CONTROL PANEL AND ATS.
- 3 JOCKEY PUMP CONTROL PANEL.
- 4 PUMP HOUSE ELECTRICAL PANEL.
- 5 FIRE PUMP DISCHARGE TO FIRE RISER.
- 6 WATER SERVICE AND TANK FILL PIPE.
- 7 TANK LEVEL SENSOR CONDUIT ENTRY.
- 8 WATER TANK DRAFT CONNECTION.
- 9 FIRE PUMP TEST HEADER.
- 10 FIRE PUMP TEST METER BYPASS.
- 11 ENTRY DOOR.
- 12 UNIT HEATER.
- 13 EXHAUST FAN.

## PUMP HOUSE GENERAL NOTES

LOCATION OF COMPONENTS INDICATED ON PLAN FOR GENERAL REFERENCE AND BIDDING PURPOSES ONLY. COORDINATE ALL SERVICE AND UTILITY CONNECTIONS WITH FINAL EQUIPMENT SUPPLIER DOCUMENTS. CONTRACTOR SCOPE INCLUDES COMPLETE AND FUNCTIONAL ASSEMBLY AS INDICATED IN THE DRAWINGS, COMPONENTS, ELEMENTS, AND SERVICES EXCLUDED FROM FACTORY ASSEMBLY SHALL BE INCLUDED IN THE FIELD FURNISHED AND INSTALLED PROJECT SCOPE.



## PLAN NOTES

- 1 FIRE SUPPRESSION STORED WATER SUPPLY TANK.
- 2 EXTERIOR FACTORY ASSEMBLED FIRE PUMP HOUSE.
- 3 WALL MOUNTED FIRE DEPARTMENT CONNECTION. PROVIDE CHECK VALVE AND BALL DRIP. EXTEND BALL DRIP DISCHARGE THROUGH WALL.
- 4 REFER TO ENLARGED PLAN.
- 5 SCOPE CONTINUED ON FIRST FLOOR PLAN.
- 6 SCOPE CONTINUED ON MECHANICAL ROOM PLAN.
- 7 TANK FILL CONTROL VALVE.
- 8 FIRE RISERS.
- 9 POST INDICATOR VALVE WITH SUPERVISORY ATTACHMENT.
- 10 PROVIDE CONDUIT AND SIGNAL WIRING FROM TANK LEVEL MONITOR IN FIRE PUMP HOUSE AND EXTEND TO CONNECTION AT TANK LEVEL MONITORING PANEL AND FILL VALVE IN EXISTING MECHANICAL ROOM.
- 11 REFER TO ENLARGED SCALE PLAN.
- 12 PROVIDE THRUST BLOCK AT PIPING CHANGE IN DIRECTION.

### VERIFICATION NOTE

CONTRACTOR SHALL VERIFY ALL DIMENSIONS AND CLEARANCES AND ALL EXISTING FIELD CONDITIONS BEFORE STARTING CONSTRUCTION. COMMENCEMENT OF WORK CONSTITUTES ACCEPTANCE OF CONDITIONS.

SHOULD DIFFERENT CONDITIONS BE ENCOUNTERED, CONTACT THE ARCHITECT BEFORE PROCEEDING WITH WORK.

COPYRIGHT 2021 BY FANNINGHOWEY ASSOCIATES, INC.

## TIPPECANOE VALLEY HIGH SCHOOL A & R

8345 STATE ROUTE 19, AKRON, IN 46910

## TIPPECANOE VALLEY SCHOOL CORPORATION



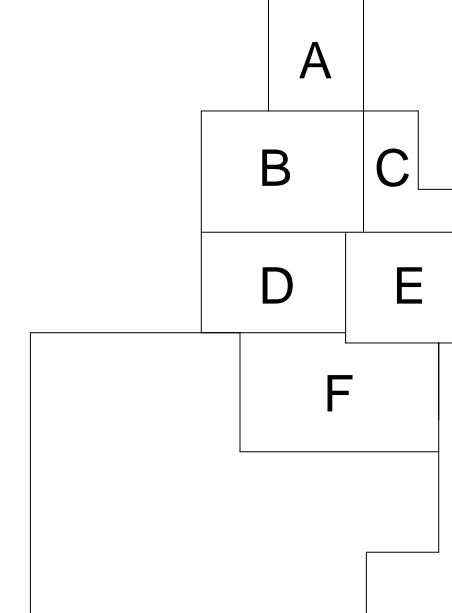
ARCHITECT

## FANNING HOWEY

317-848-0966

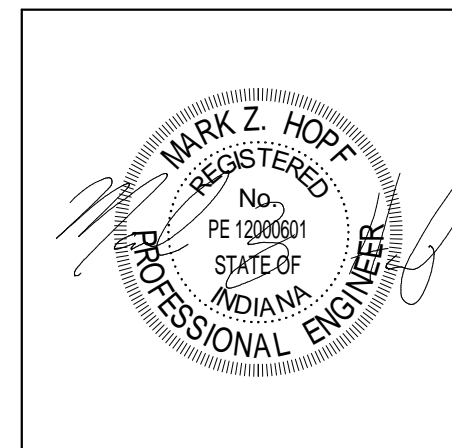
WWW.FHAI.COM

350 E NEW YORK ST #500, INDIANAPOLIS, IN 46204



## KEY PLAN

### CONSTRUCTION DOCUMENTS



PROJECT MANAGER: MKS

DRAWN BY: CSS

PROJECT NUMBER: 220158.00

PROJECT ISSUE DATE: 9/6/2022

REV. NO.	DESCRIPTION	DATE

## FIRE SUPPRESSION SITE PLAN AND DETAILS

## FP.03



ROOM LEGEND - FIRST FLOOR UNIT A		
ROOM NO.	ROOM NAME	AREA (SF)
A101	GYMNASIUM #2	13014 SF

ROOM LEGEND - FIRST FLOOR UNIT B		
ROOM NO.	ROOM NAME	AREA (SF)
B101	CORRIDOR	1123 SF
B102	AG LAB	1827 SF
B103	AG CLASSROOM 2	1083 SF
B104	AG LAB CLEAN WORK ROOM	212 SF
B105	AG CLASSROOM 1	1051 SF
B106	AG PLANNING	234 SF
B107	FIELDHOUSE STORAGE	419 SF
B108	AG LAB STORAGE	231 SF
B109	AG LAB CONSTRUCTION	302 SF
B110	CUSTODIAL OFFICE	205 SF
B111	STORAGE	697 SF
B112	FIELD HOUSE	13884 SF

ROOM LEGEND - FIRST FLOOR UNIT C		
ROOM NO.	ROOM NAME	AREA (SF)
C101	HALL OF CHAMPIONS	1608 SF
C102	LOCKERS	1271 SF
C103	RESTROOM	206 SF
C104	TRAIN	159 SF
C105	OFFICE	297 SF
C106	RR	64 SF
C107	OFFICE	165 SF
C108	RR	64 SF
C109	JANITOR	36 SF
C110	LOCKERS	658 SF
C111	RESTROOM	206 SF
C112	CARDIO	454 SF
C113	MEZZANINE ACCESS	61 SF
C114	WEIGHT ROOM	4453 SF
C115	OFFICE	128 SF

### FIRE PROTECTION PLAN NOTES

- EXISTING UNSPRINKLERED BUILDING AREA TO REMAIN.
- PROVIDE CLASS III HOSE STATION TO SERVE STAGE.
- WORK CONTINUED ON ENLARGED PLANS.
- SPACE/ROOM IS CONSIDERED ORDINARY HAZARD 1.
- SPACE/ROOM IS CONSIDERED ORDINARY HAZARD 2.
- PROVIDE INTERMEDIATE TEMPERATURE SPRINKLERS AT UNDERSIDE OF SKYLIGHT PER NFPA 13 REQUIREMENTS.
- FIRE SERVICE ENTRY AND SPRINKLER ZONES UNDER BASE BID AND ARE NOT INCLUDED IN ALTERNATE REVISED SCOPES
- PROVIDE LISTED SPRINKLERS CAGES IN THIS SPACE.
- PIPING EXTENDS TO FIRE PUMP HOUSE ON SITE PLAN.
- PROVIDE UPRIGHT SPRINKLERS UNDER RAIL OF ROLL BACK OVERHEAD DOOR.
- PROVIDE DRY SIDEWALL SPRINKLERS.
- PROVIDE SUPERVISED VALVE AND CHECK AT ACCESSIBLE ELEVATION ADJACENT HOSE CABINET. VALVE TO ISOLATE BOTH HOSE CABINETS FROM SPRINKLER SYSTEM.
- PROVIDE SPRINKLERS ABOVE POOL DECK. SPRINKLERS ABOVE POOL FOOTPRINT NOT IN SPRINKLER SCOPE. REFER TO VARIANCE REQUIREMENTS.
- PROVIDE SPRINKLERS AT THE UNDERSIDE OF STRUCTURE AND WITHIN THE CLOUD CEILING ELEMENTS IN THIS SPACE.

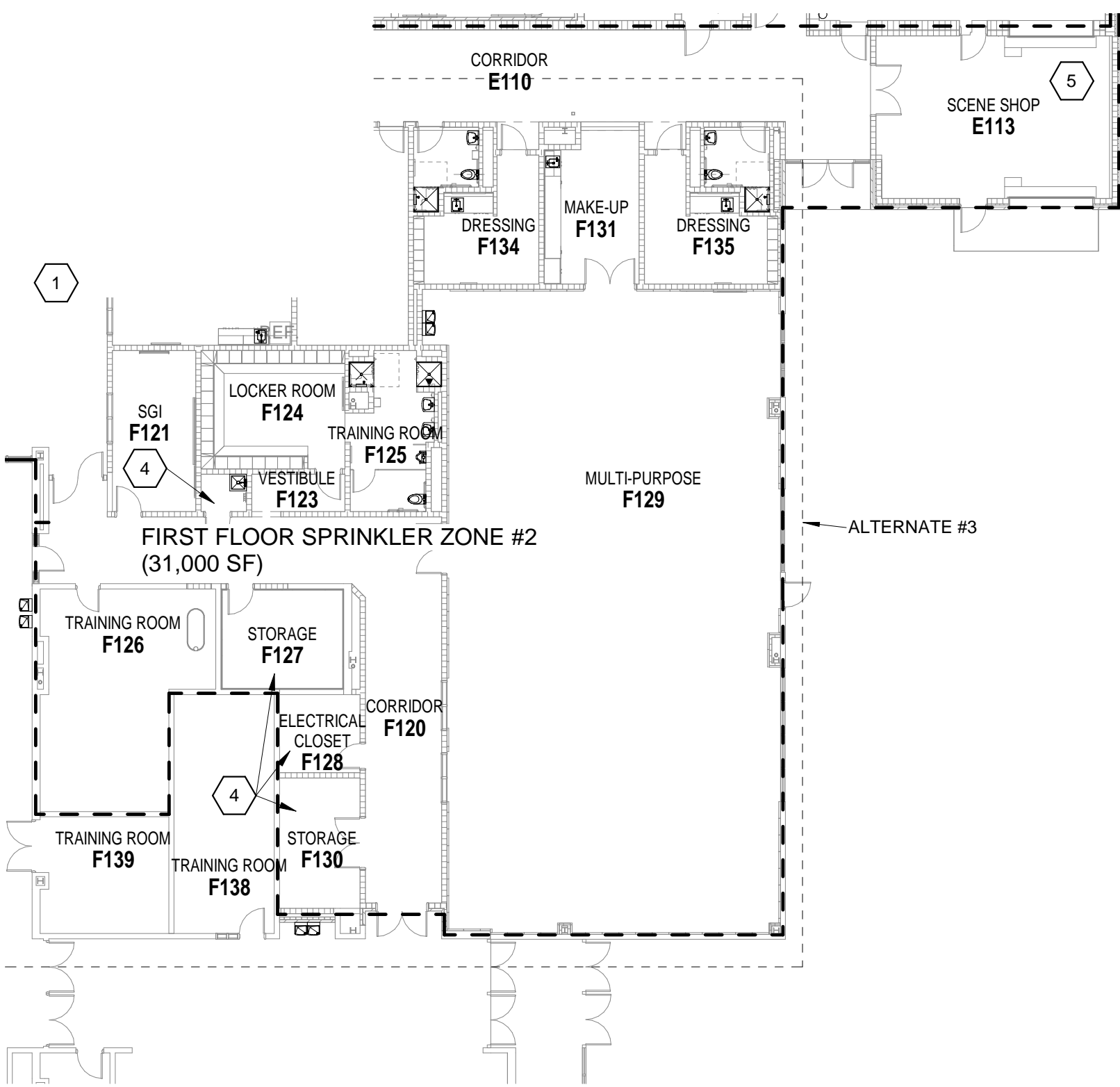
ALTERNATE #1

REFER TO FP0.3 FOR CONTINUATION

FIRST FLOOR SPRINKLER ZONE #1  
(46,250 SF)

ALTERNATE #2

ALTERNATE #1



01-FIRE SUPPRESSION - FIRST FLOOR Copy 1  
SCALE: 1/16" = 1'-0"

01-FIRE SUPPRESSION - FIRST FLOOR  
SCALE: 1/16" = 1'-0"

### GENERAL FIRE PROTECTION NOTES

- ALL FIRE PROTECTION WORK PERFORMED ON THIS PROJECT SHALL BE SIZED PER HYDRAULIC CALCULATIONS. CONTRACTOR IS RESPONSIBLE FOR COORDINATION WITH ALL DUCTWORK, RACEWAYS, CABLE TRAYS, CONDUITS, STRUCTURAL MEMBERS, PIPING AND ARCHITECTURAL CEILING HEIGHTS AND DESIGN INTENT. ALL FIRE PROTECTION WORK SHALL BE PROVIDED IN ACCORDANCE WITH APPLICABLE NFPA, BUILDING CODE, FIRE CODE AND THE AUTHORITY HAVING JURISDICTION TO DELIVER A PENALTY FREE SYSTEM.
- REFER TO DIVISION 21 SPECIFICATIONS FOR SYSTEM REQUIREMENTS.
- ALL DIVISION 21 SCOPE SHALL BE COORDINATED WITH OTHER TRADES. DIVISION 21 SYSTEM COMPONENTS SHALL BE INSTALLED TO MAINTAIN SERVICE AND ACCESS CLEARANCE TO EQUIPMENT BY OTHER TRADES. ANY DIVISION 21 SCOPE DEEMED TO BE IN CONFLICT WITH OTHER TRADES SHALL BE RELOCATED AT THE COST OF THE CONTRACTOR.
- REFER TO ARCHITECTURAL AND STRUCTURAL DOCUMENTS FOR CEILING TYPES AND AVAILABLE WORKING SPACE.
- PROVIDE ALL REQUIRED STRUCTURAL SUPPORTS.
- SPRINKLER TYPES PER AREA SHALL BE PER THE DIVISION 21 SPECIFICATIONS.
- REFER TO ARCHITECTURAL AND MECHANICAL DOCUMENTS FOR LARGE OBSTRUCTIONS AND CLOUD TYPE CEILINGS REQUIRING SPRINKLERS ABOVE AND BELOW OBSTRUCTIONS. SUPPLEMENTAL SPRINKLERS ARE REQUIRED THROUGHOUT THE CEILING OF THE AUDITORIUM AND STAGE.
- SPRINKLERS LOCATED IN GYMNASIUMS AND OTHER LOCATIONS SUBJECT TO PHYSICAL DAMAGE SHALL BE PROVIDED WITH UL LISTED PROTECTIVE SPRINKLER CAGE.
- SPACES/ROOMS SHALL BE FIRE SUPPRESSED IN COMPLIANCE WITH HAZARD CLASSIFICATION AS INDICATED IN NFPA 13. MECHANICAL, ELECTRICAL, TECH, STORAGE AND JANITOR'S ROOMS SHALL BE MINIMUM ORDINARY HAZARD 1. STAGES AND ADJACENT SPACES SHALL BE MINIMUM ORDINARY HAZARD 2.

COPYRIGHT 2021 BY FANNINGHOWEY ASSOCIATES, INC.

## TIPPECANOE VALLEY HIGH SCHOOL A & R

8345 STATE ROUTE 19, AKRON, IN 46910

### TIPPECANOE VALLEY SCHOOL CORPORATION



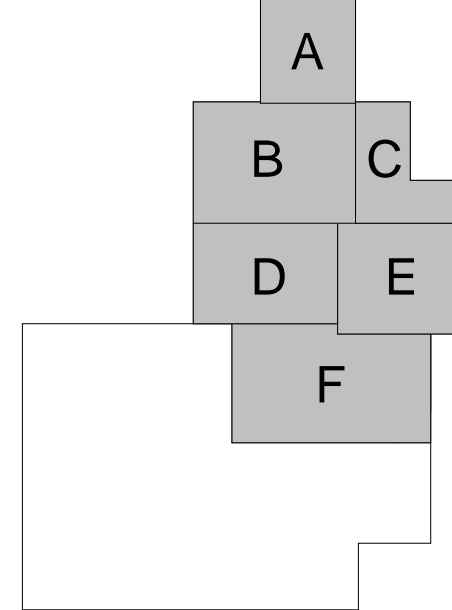
ARCHITECT

## FANNING HOWEY

317-848-0966

WWW.FHAI.COM

350 E NEW YORK ST #500, INDIANAPOLIS, IN 46204



### KEY PLAN

### CONSTRUCTION DOCUMENTS



PROJECT MANAGER: MKS  
DRAWN BY: CSS  
PROJECT NUMBER: 220158.00  
PROJECT ISSUE DATE: 9/6/2022

REV. NO.	DESCRIPTION	DATE
1	REBID ADDENDUM 1	9/23/2022

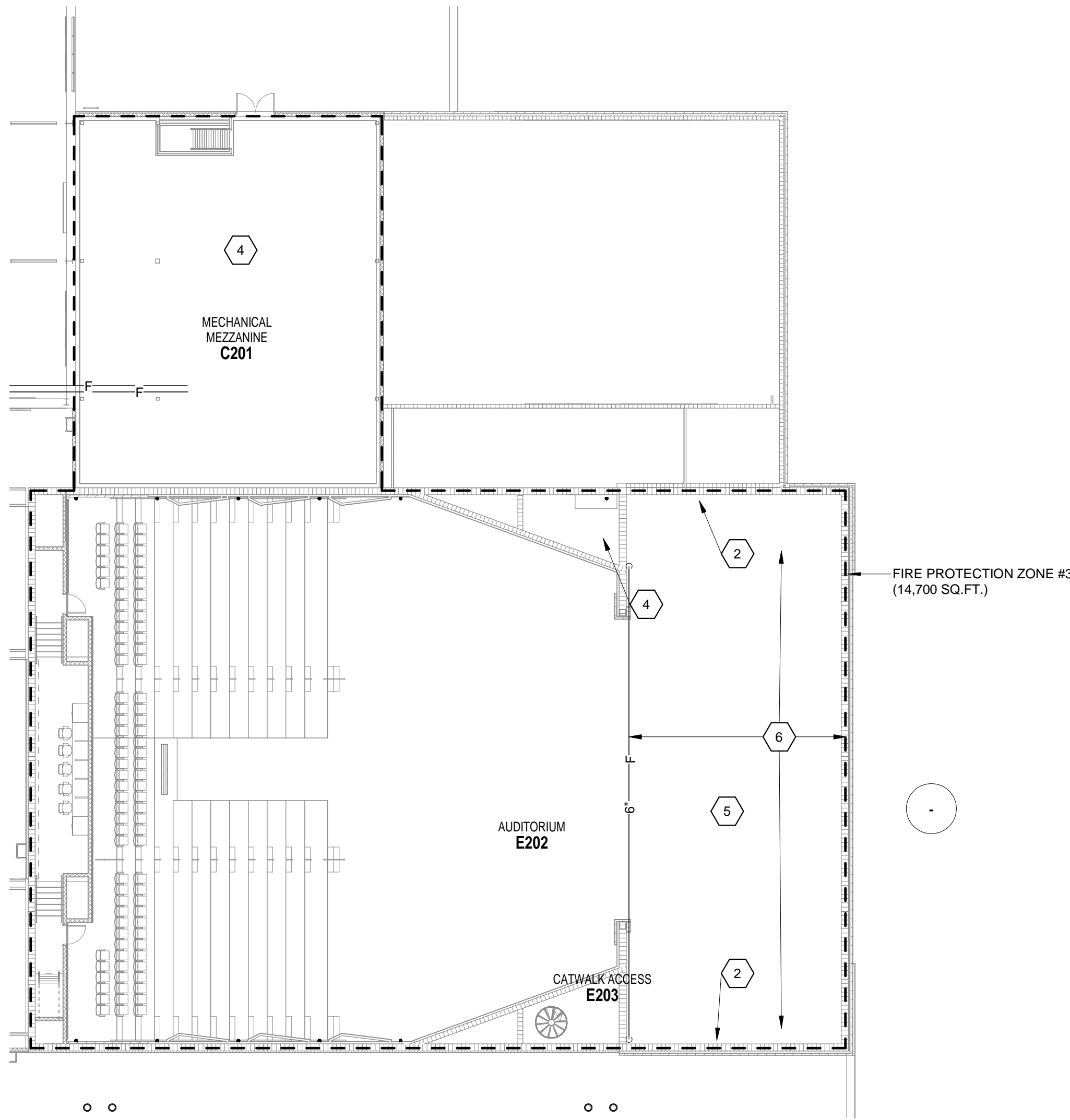
### FIRST FLOOR FIRE PROTECTION PLAN

## FP2.01

### VERIFICATION NOTE

CONTRACTOR SHALL VERIFY ALL DIMENSIONS AND CLEARANCES AND ALL EXISTING FIELD CONDITIONS BEFORE STARTING CONSTRUCTION. COMMENCEMENT OF WORK CONSTITUTES ACCEPTANCE OF CONDITIONS. SHOULD DIFFERENT CONDITIONS BE ENCOUNTERED, CONTACT THE ARCHITECT BEFORE PROCEEDING WITH WORK.

ROOM LEGEND - SECOND FLOOR UNIT C		
ROOM NO.	ROOM NAME	AREA (SF)
C201	MECHANICAL MEZZANINE	2819 SF



02-FIRE SUPPRESSION - SECOND FLOOR

SCALE: 1/16" = 1'-0"

FIRE PROTECTION PLAN NOTES

- EXISTING UNSPRINKLERED BUILDING AREA TO REMAIN.
- PROVIDE CLASS III HOSE STATION TO SERVE STAGE.
- WORK CONTINUED ON ENLARGED PLANS.
- SPACE/ROOM IS CONSIDERED ORDINARY HAZARD 1.
- SPACE/ROOM IS CONSIDERED ORDINARY HAZARD 2.
- INSTALL SPRINKLER PIPING IN JOIST SPACE ABOVE STEEL RIGGING BEAMS FOR THE CEILING AREA ABOVE THE STAGE. SPRINKLERS AND PIPING LOCATIONS SHALL AVOID RIGGING BEAMS AND ANY SMOKE/HEAT VENTS PRESENT.

GENERAL FIRE PROTECTION NOTES

- ALL FIRE PROTECTION WORK PERFORMED ON THIS PROJECT SHALL BE SIZED PER HYDRAULIC CALCULATIONS. CONTRACTOR IS RESPONSIBLE FOR COORDINATION WITH ALL DUCTWORK, RACEWAYS, CABLE TRAYS CONDUITS, STRUCTURAL MEMBERS, PIPING AND ARCHITECTURAL CEILING HEIGHTS AND DESIGN INTENT. ALL FIRE PROTECTION WORK SHALL BE PROVIDED IN ACCORDANCE WITH APPLICABLE NFPA, BUILDING CODE, FIRE CODE AND THE AUTHORITY HAVING JURISDICTION TO DELIVER A PENALTY FREE SYSTEM.
- REFER TO DIVISION 21 SPECIFICATIONS FOR SYSTEM REQUIREMENTS.
- ALL DIVISION 21 SCOPE SHALL BE COORDINATED WITH OTHER TRADES. DIVISION 21 SYSTEM COMPONENTS SHALL BE INSTALLED TO MAINTAIN SERVICE AND ACCESS CLEARANCE TO EQUIPMENT BY OTHER TRADES. ANY DIVISION 21 SCOPE DEEMED TO BE IN CONFLICT WITH OTHER TRADES SHALL BE RELOCATED AT THE COST OF THE CONTRACTOR.
- REFER TO ARCHITECTURAL AND STRUCTURAL DOCUMENTS FOR CEILING TYPES AND AVAILABLE WORKING SPACE.
- PROVIDE ALL REQUIRED STRUCTURAL SUPPORTS.
- SPRINKLER TYPES PER AREA SHALL BE PER THE DIVISION 21 SPECIFICATIONS.
- REFER TO ARCHITECTURAL AND MECHANICAL DOCUMENTS FOR LARGE OBSTRUCTIONS AND CLOUD TYPE CEILINGS REQUIRING SPRINKLERS ABOVE AND BELOW OBSTRUCTIONS.
- SPRINKLERS LOCATED IN GYMNASIUMS AND OTHER LOCATIONS SUBJECT TO PHYSICAL DAMAGE SHALL BE PROVIDED WITH UL LISTED PROTECTIVE SPRINKLER CAGE.
- SPACES/ROOMS SHALL BE FIRE SUPPRESSED IN COMPLIANCE WITH HAZARD CLASSIFICATION AS INDICATED IN NFPA 13. MECHANICAL, ELECTRICAL, TECH, STORAGE AND JANITOR'S ROOMS SHALL BE MINIMUM ORDINARY HAZARD 1. STAGES AND ADJACENT SPACES SHALL BE MINIMUM ORDINARY HAZARD 2.

COPYRIGHT 2021 BY FANNINGHOWEY ASSOCIATES, INC.

TIPPECANOE VALLEY HIGH SCHOOL A & R

8345 STATE ROUTE 19, AKRON, IN 46910

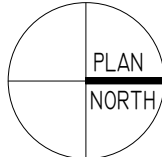
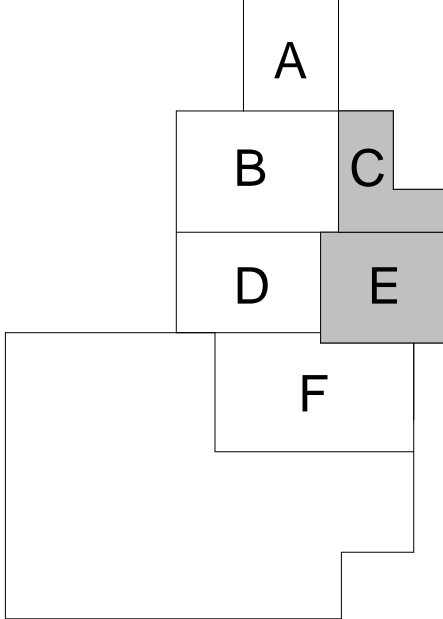
TIPPECANOE VALLEY SCHOOL CORPORATION



ARCHITECT

FANNING HOWEY

317-848-0966 WWW.FHAI.COM  
350 E NEW YORK ST #500, INDIANAPOLIS, IN 46204



KEY PLAN

CONSTRUCTION DOCUMENTS



PROJECT MANAGER: MKS  
DRAWN BY: CSS  
PROJECT NUMBER: 220158.00  
PROJECT ISSUE DATE: 9/6/2022

REV. NO.	DESCRIPTION	DATE

SECOND FLOOR FIRE PROTECTION PLAN

FP2.02