

**ADDENDUM
NO. 2**

March 7, 2023

**JERRY ROSS ELEMENTARY SCHOOL ADDITIONS, RENOVATIONS,
AND RELATED WORK**
Crown Point, IN 46307

TO: ALL BIDDERS OF RECORD

This Addendum forms a part of and modifies the Bidding Requirements, Contract Forms, Contract Conditions, the Specifications, and the Drawings dated February 9, 2023 by Gibraltar Design. Acknowledge receipt of the Addendum in the space provided on the Bid Form. Failure to do so may subject the Bidder to disqualification.

This Addendum consists of Pages ADD 2-1 and attached Addendum No. 2 from Gibraltar Design dated March 6, 2023 and consisting of 2 pages and 3 drawings.

ADDENDUM TWO

Addendum Two (AD.02) to the drawings and specifications prepared by Gibraltar Design for **Jerry Ross Elementary School Addition, Renovations, and Related Work** for Crown Point Community School Corporation, Crown Point, Indiana.

All Contractors bidding on this project shall read all of the items covered below and shall comply with all of the requirements as set forth, including any necessary refinements or additions generated by this Addendum and required by the intent of the original contract documents. All Contractors shall acknowledge on their bid form that they have received this Addendum and include the appropriate content of same within their bid proposal.

GENERAL SCOPE

Provide the following Exterior Site Work Playground:

- A. The location of the play shall adjacent to the existing playground off the main walk along the south side of the building.

Contractor is responsible for the actual existing locker count

SPECIFICATIONS

- 1. **Specification Section 10 14 00** **Signage**
 - A. Remove Para 2.1.A.1 (existing exterior door numbers shall be relocated)
 - B. Remove Para 2.1.B.6 (no directional signage required)
 - C. Add the following text at the end of Para 2.1.C.2 "Artwork provided by owner"

DRAWINGS

- 2. **Sheet G-101**
 - A. Remove the reference "C Civil, C-100 Rough Grade for Pre-K Playground" (the description for this work is contained within Addendum 1 and 2).
- 3. **Sheet AD-101**
 - A. In room E134, a keynote 7 shall be added, pointing to the sink along the corridor wall.
 - B. Add Keynote 31 that reads "Relocate existing exit number signage and reinstall at the exit and the new addition. Provide new mounting hardware as required". Show keynote on the exterior wall to the left of the exterior aluminum doors being removed at keynote 5.

**4. Sheet AD-102**

- A. Add Keynote 31 that reads "Relocate existing exit number signage and reinstall at the exit and the new addition. Provide new mounting hardware as required". Show keynote on the exterior wall to the left of the exterior aluminum doors being removed at keynote 5.

5. Sheets A-802, A-803

- A. Refer to revised, full-size drawing, included in this Addendum, for the following revisions:
 - 1. Add Keynote 51 and 54 at the lockers around the gang toilet room core(4 banks of lockers)

6. Sheets E-101A, E-102A, E-103A, E-104A

- A. The retrofit lamps referred to in Plan Notes 5 and 10 shall be Philips 14.5T8/COR/48-840/MF21/G10/1 or approved equal with a minimum lumen output of 2100 lumens for each of the 4 foot lamps and a similar lamp for each of the 3 foot lamps.
- B. The retrofit lamps referred to in Plan Note 9 shall be a LED retrofit replacement lamp for CFL lamps comparable to the lumen output of the existing PL lamps being replaced. Contractor shall field verify type of lamps being replaced.

7. Sheet E-105A

- A. Refer to revised, full-size drawing, included in this Addendum, for the following revisions:
 - 1. Modifying Plan Notes.
 - 2. Adding a few occupancy sensors in selected room shown.

Pages 1 through 2, inclusive, and one (3) Full-Size Drawing, constitute the total makeup of **Addendum Two**.

**GIBRALTAR**

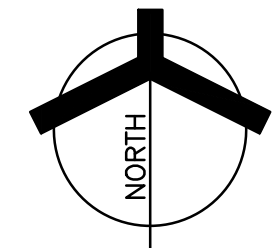
DESIGN

Y:\21-118 Crown Point CSC - Ross ES Improvements\Specs\Addendum 02\AD02.doc

Monday, 3/6/2023 11:42 AM - LAST SAVED BY: CHAMBERS
Y:\21-118 CROWN POINT CSC - ROSS ES
IMPROVEMENTS\21-118 DRAWINGS\09 ELEC\E-105A.DWG



UNIT "E" ELECTRICAL FIRST FLOOR LIGHTING PLAN
SCALE: 1/8" = 1'-0"



GENERAL NOTES:

1. FOR ADDITIONAL GENERAL ELECTRICAL NOTES, SEE GENERAL ELECTRICAL PROJECT NOTES ON SHEET E-001.
2. SEE E-600 SHEETS FOR ELECTRICAL DETAILS AND SCHEDULES.
3. SEE E-700 SHEETS FOR ELECTRICAL DISTRIBUTION DIAGRAMS.
4. CONNECT NIGHT LIGHTS/EMERGENCY LIGHTS AND EXIT SIGNS TO CIRCUITS INDICATED AHEAD OF ANY CONTROLS.
4. PROVIDE ALL LABOR AND MATERIAL TO MODIFY THE WIRING TO THE EXISTING EXIT SIGNS AND EMERGENCY LIGHTING FIXTURES. NOT ALL EXIT SIGNS AND EMERGENCY LIGHTS ARE SHOWN. CONTRACTOR SHALL VISIT SITE AND DETERMINE THE LOCATION OF ALL EXIT SIGNS AND EMERGENCY LIGHTING FIXTURES. (ALTERNATE BID).
5. CONNECT ALL EXIT LIGHTS AND EMERGENCY LIGHTING ON THIS SHEET TO CIRCUITS INDICATED WITH #8 AWG CONDUCTORS. (GENERATOR ALTERNATE BID).

ELECTRICAL PLAN NOTES:
(THESE NOTES APPLY TO THIS SHEET ONLY)

1. REPLACE THE EXISTING LIGHTING FIXTURES AND LIGHT SWITCHES IN THIS ROOM WITH THE NEW LIGHTING FIXTURES AND DIMMERS. PROVIDE THE NEW OCCUPANCY SENSORS AS SHOWN AND CONNECT THE NEW LIGHTING FIXTURES TO THE NEW OCCUPANCY SENSORS AND WALL DIMMERS IN THIS ROOM TO THE EXISTING LIGHTING CIRCUIT SERVING THIS ROOM. (LIGHTING UPGRADE ALTERNATE BID).
2. REPLACE THE EXISTING EXIT LIGHT WITH A NEW EXIT SIGN AS SHOWN AND CONNECT TO THE EXISTING LIGHTING CIRCUIT SERVING THIS ROOM AHEAD OF ANY CONTROLS. (LIGHTING UPGRADE ALTERNATE BID).
3. REPLACE THE EXISTING LIGHTING FIXTURES AND LIGHT SWITCHES IN THIS ROOM WITH THE NEW LIGHTING FIXTURES AND LIGHT SWITCH. PROVIDE THE NEW OCCUPANCY SENSORS AS SHOWN AND CONNECT THE NEW LIGHTING FIXTURES TO THE NEW OCCUPANCY SENSORS AND LIGHT SWITCH IN THIS ROOM TO THE EXISTING LIGHTING CIRCUIT SERVING THIS ROOM. CONNECT LIGHTING FIXTURE DESIGNATED AS NIGHT LIGHT (NL) TO EXISTING CIRCUIT SERVING THIS ROOM AHEAD OF ANY CONTROLS. (LIGHTING UPGRADE ALTERNATE BID).
4. MODIFY WIRING AS NECESSARY TO DISCONNECT EXISTING BRANCH CIRCUIT WIRING FROM THE EXISTING LIGHTING FIXTURES IN THE GYMNASIUM AND LIGHT SWITCHES IN THE GYMNASIUM AND CAFETERIA SERVING THE GYMNASIUM LIGHTING FIXTURES AS SHOWN AND CONNECT THEM TO THE EMERGENCY LIGHTING CIRCUIT SHOWN. (GENERATOR ALTERNATE BID).
5. DISCONNECT AND REMOVE THE EXISTING BATTERY UNIT IN THE EXISTING EMERGENCY LIGHTING FIXTURES IN THIS ROOM AND PREPARE EXISTING EMERGENCY LIGHTING FIXTURES AND WIRING IN THIS ROOM FOR CONNECTION TO THE NEW LIGHT SWITCH AND EMERGENCY LIGHTING CIRCUIT SHOWN. MODIFY WIRING TO THE OTHER LIGHTING FIXTURES ON THE EXISTING LIGHTING CIRCUIT AND CONTROLS IN OPERATION. (GENERATOR ALTERNATE BID).
6. DELETE THE EMERGENCY BATTERY UNIT IN THIS FIXTURE AND CONNECT THE NEW LIGHTING FIXTURE TO THE NEW EMERGENCY CIRCUIT INDICATED AHEAD OF ANY CONTROLS. (GENERATOR ALTERNATE BID).
7. DELETE THE EMERGENCY BATTERY UNIT IN THIS FIXTURE AND PROVIDE LIGHTING FIXTURE WITH A EMERGENCY GENERATOR TRANSFER DEVICE. CONNECT THE NEW LIGHTING FIXTURE AND EMERGENCY GENERATOR TRANSFER DEVICE TO THE NEW EMERGENCY CIRCUIT SO THAT ON LOSS OF NORMAL POWER, IT TRANSFER TO THE EMERGENCY CIRCUIT. (GENERATOR ALTERNATE BID).
8. REPLACE THE EXISTING LIGHTING FIXTURES IN THIS ROOM WITH THE NEW LIGHTING FIXTURES AND NEW OCCUPANCY SENSORS AS SHOWN. MODIFY WIRING AS NECESSARY TO CONNECT THE NEW LIGHTING FIXTURES AND NEW OCCUPANCY SENSORS TO THE EXISTING CIRCUIT AND CONTROLS, UNLESS OTHERWISE NOTED. CONNECT LIGHTING FIXTURE DESIGNATED AS NIGHT LIGHT (NL) TO EXISTING CIRCUIT SERVING THIS ROOM AHEAD OF ANY CONTROLS. (LIGHTING UPGRADE ALTERNATE BID).
9. PROVIDE ALL LABOR AND MATERIAL TO PROPERLY REPLACE THE EXISTING COMPACT FLUORESCENT LAMPS IN THE EXISTING LIGHTING FIXTURE WITH NEW LED RETROFIT LAMPS. PHILIPS XXX OR APPROVED EQUALS.
10. PROVIDE ALL LABOR AND MATERIAL TO PROPERLY REPLACE THE EXISTING METAL HALIDE LAMP IN THE EXISTING LIGHTING FIXTURE WITH NEW LED RETROFIT LAMPS. PHILIPS XXX OR APPROVED EQUALS.
11. REPLACE THE EXISTING LIGHTING FIXTURES IN THIS ROOM WITH THE NEW LIGHTING FIXTURES AND NEW OCCUPANCY SENSORS AS SHOWN. MODIFY WIRING AS NECESSARY TO CONNECT THE NEW LIGHTING FIXTURES AND NEW OCCUPANCY SENSORS TO THE EXISTING CIRCUIT AND CONTROLS, UNLESS OTHERWISE NOTED. CONNECT LIGHTING FIXTURE DESIGNATED AS NIGHT LIGHT (NL) TO EXISTING CIRCUIT SERVING THIS ROOM AHEAD OF ANY CONTROLS. (LIGHTING UPGRADE ALTERNATE BID).
12. REPLACE THE EXISTING LIGHTING FIXTURES AND LIGHT SWITCHES IN THIS ROOM WITH NEW LIGHTING FIXTURES AND SWITCHES AS SHOWN AND CONNECT THEM TO THE EXISTING LIGHTING CIRCUIT SERVING THIS ROOM. (LIGHTING UPGRADE ALTERNATE BID).
13. DELETE THE BATTERY IN THE EMERGENCY LIGHTING FIXTURE. MODIFY WIRING AS NECESSARY TO CONNECT ALL OF THE NEW LIGHTING FIXTURES IN THIS ROOM AND NEW OCCUPANCY SENSORS/LIGHT SWITCH SHOWN TO THE EMERGENCY CIRCUIT INDICATED. (GENERATOR ALTERNATE BID).

ROOM LEGEND	
ROOM NO.	ROOM NAME

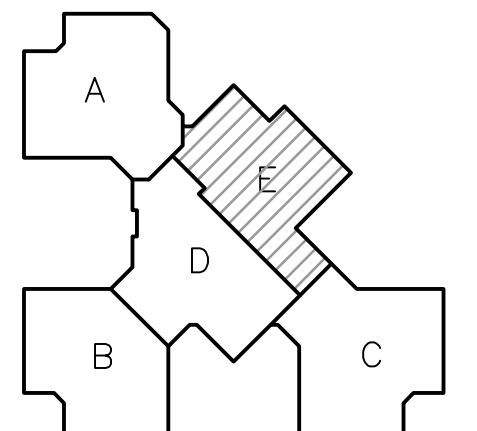


GIBRALTAR
DESIGN
ARCHITECTURE • ENGINEERING • INTERIOR DESIGN

PROJECT

**JERRY ROSS
ELEMENTARY
SCHOOL
ADDITIONS,
RENOVATION,
AND RELATED
WORK**

FOR:
**CROWN POINT COMMUNITY
SCHOOL CORPORATION**
CROWN POINT, INDIANA



FIRST FLOOR KEY PLAN

GIBRALTAR DESIGN
9102 N. Meridian St., Ste. 300
Indianapolis, IN 46260
Homepage: www.GibraltarDesign.com
Email: info@GibraltarDesign.com
Phone: 317.580.5777 Fax: 317.580.5778

PROJECT

21-118

DATE

2/9/23

COORDINATED BY

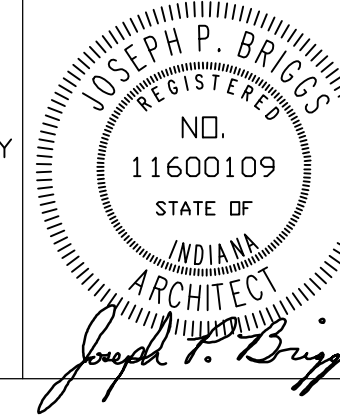
PCB

DRAWN BY

PCB JVC

CHECKED BY

JPB



COPYRIGHT NOTICE:
THE CONCEPTS, DESIGNS, PLANS, DETAILS, ETC., SHOWN ON THIS DOCUMENT ARE THE PROPERTY OF GIBRALTAR DESIGN AND WERE CREATED FOR USE ON THIS SPECIFIC PROJECT. NONE OF THIS INFORMATION SHALL BE USED BY ANY PERSON OR FIRM FOR ANY PURPOSE WITHOUT THE EXPRESS WRITTEN CONSENT OF GIBRALTAR DESIGN. THE OWNER MAY RETAIN COPIES FOR INFORMATION AND REFERENCE IN CONNECTION ONLY WITH THIS PROJECT.

REVISIONS

MARK	DATE	ISSUED FOR
AD-1	03/01/23	ADDENDUM NO. 1
AD-2	03/06/23	ADDENDUM NO. 2

DRAWING

**UNIT "E" ELECTRICAL FIRST
FLOOR LIGHTING PLAN**

PROJECT

**JERRY ROSS ELEMENTARY SCHOOL
ADDITIONS, RENOVATION, AND
RELATED WORK**

© GIBRALTAR DESIGN

SHEET

ALTERNATE BID

E-105A

GENERAL FINISH PLAN NOTES:

- A. REFERENCE FINISH LEGEND FOR FINISH INFORMATION.
- B. REFERENCE FLOOR PATTERN PLANS, EQUIPMENT PLANS, INTERIOR ELEVATIONS, REFLECTED CEILING PLANS AND WRITTEN SPECIFICATIONS FOR ADDITIONAL FINISH INFORMATION.
- C. PRIOR TO INSTALLATION OF NEW FINISHES CONTRACTOR SHALL INSPECT ALL SUBSTRATES. IF A SUBSTRATE IS DEEMED UNACCEPTABLE THE CONTRACTOR SHALL TAKE THE NECESSARY STEPS TO RECTIFY THE SITUATION OR CONTACT THE ARCHITECT WITH THE CONCERN. PROCEEDING WITH THE INSTALLATION OF FINISHES WILL BE CONSTRUED THAT THE INSTALLER AND/OR FINISHER HAS ACCEPTED SAID SUBSTRATE. NO CHANGE ORDER WILL BE ISSUED TO RECTIFY CONCEALED, OR UNSATISFACTORY SUBSTRATE ONCE FINISH WORK HAS PROCEEDED.
- D. PREPARE ALL WALL CONSTRUCTION, NEW AND EXISTING, TO RECEIVE NEW FINISHES AS PER MANUFACTURE'S RECOMMENDED INSTALLATION METHODS AND MATERIALS FOR ALL FINISHES.
- E. ALL FLOORING IS TO BE LEVELED WITHIN 1/4" IN 10'-0" WITH LATEX MATERIAL. MOISTURE CONTENT IN AREA IS TO BE TESTED PRIOR TO INSTALLATION OF FLOORING MATERIAL. CONTRACTOR TO INSTALL FLOORING PER MANUFACTURER'S RECOMMENDED METHOD.
- F. FLOORING CONTRACTOR TO SUBMIT A SEAMING DIAGRAM FOR FLOORING MATERIAL INCLUDING NOTATION OF MATERIAL DIRECTION.
- G. ALL FLOORING TRANSITIONS SHALL COMPLY WITH ADA GUIDELINES.
- H. ALL EXPOSED METAL SURFACES, SUCH AS GRILLES, FIRE EXTINGUISHER CABINETS, ETC. THAT ARE NOTED TO BE PAINTED, SHALL BE PAINTED WITH ALKID TYPE PAINT. COLOR TO BE COORDINATED WITH DESIGNER UNLESS OTHERWISE NOTED.
- I. CONTRACTOR TO PROVIDE AND INSTALL FLOORING TRANSITIONS AS INDICATED ON THE FLOOR PATTERN PLANS, WHERE NONE ARE NOTED, CONTRACTOR SHALL VERIFY REQUIRED TYPE/COLOR WITH ARCHITECT.
- J. THE CONTRACTOR SHALL BE RESPONSIBLE TO VERIFY THAT ALL NEW INTERIOR WALL AND CEILING FINISHES WILL BE CLASS B MINIMUM, WITH A FLAME SPREAD RATING OF 75 MAXIMUM, AND A SMOKE DEVELOPED INDEX OF 450 MAXIMUM, PER IRC SECTION 803.
- K. IN ROOMS WHERE WALLS ARE INDICATED TO BE PAINTED, ALL DOORFRAMES AND WINDOWFRAMES ARE TO BE PAINTED, P5.

FINISH SYMBOL LEGEND:

P1	WALL FINISH
C1	FLOOR FINISH
B1	BASE FINISH
---	MISC FINISH INFORMATION

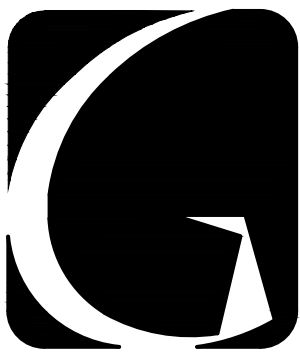
— FLOOR TRANSITION STRIP AS REQUIRED

↑ INDICATES DIRECTION OF MATERIAL GRAIN

FINISH PLAN NOTES:

(ALL PLAN NOTES MAY NOT BE INDICATED ON THIS PLAN)

- ① NO NEW FINISHES THIS ROOM, EXCLUDING DOOR FRAMES CONNECTED TO OTHER ROOMS THAT RECEIVE NEW FINISHES.
- ② BASE BID: MATCH EXISTING WALL PAINT, EXISTING BASE TO REMAIN.
- ③ EXISTING WALL MURAL TO REMAIN.
- ④ EXISTING ACOUSTICAL WALL PANELS TO REMAIN.
- ⑤ BASE BID: INFILL CARPET WITH OWNER'S ATTIC STOCK.
- ⑥ BASE BID: WALL TILE, WT1.
- ⑦ ALTERNATE BID CLASSROOM ADDITION
- ⑧ ALTERNATE BID CLASSROOM & CORRIDOR REFRESH
- ⑨ ALTERNATE BID CLASSROOM & CORRIDOR REFRESH: PAINT MULLIONS P5
- ⑩ ALTERNATE BID CLASSROOM & CORRIDOR REFRESH: TARKETT: CARPET, C2g J&J: CARPET, C2b(70%) + C4b(30%)
- ⑪ ALTERNATE BID POD COMMONS REFRESH
- ⑫ ALTERNATE BID POD COMMONS REFRESH: PAINT EXISTING LOCKERS, P4
- ⑬ ALTERNATE BID POD COMMONS REFRESH: TARKETT: CARPET, C2g J&J: CARPET, C2b(70%) + C4b(30%)
- ⑭ ALTERNATE BID POD COMMONS REFRESH: WALL TILE WT2 AT REMOVED WALL TILE LOCATIONS, REFER TO DEMOLITION PLANS. ALL OTHER RESTROOM WALLS ETR
- ⑮ ALTERNATE BID POD COMMONS REFRESH: PAINT ABOVE LOCKERS, P9; PAINT BELOW LOCKERS P4
- ⑯ ALTERNATE BID CAFE & MEDIA CENTER REFRESH
- ⑰ ALTERNATE BID CAFE & MEDIA CENTER REFRESH: WALL BASE, B1
- ⑱ ALTERNATE BID MAIN ENTRY FLOORING REPLACEMENT



GIBALTAR
DESIGN

ARCHITECTURE • ENGINEERING • INTERIOR DESIGN

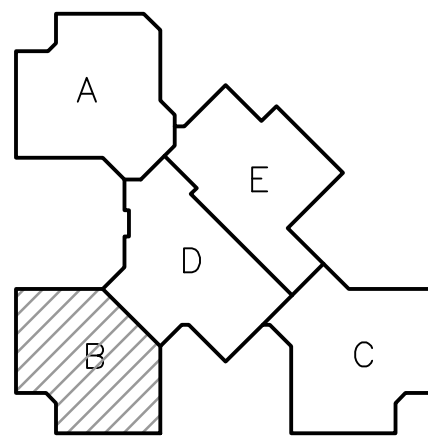
PROJECT

**JERRY ROSS
ELEMENTARY
SCHOOL
ADDITIONS,
RENOVATION,
AND RELATED
WORK**

FOR:

CROWN POINT COMMUNITY
SCHOOL CORPORATION

CROWN POINT, INDIANA



FIRST FLOOR KEY PLAN

GIBALTAR DESIGN

9102 N. Meridian St., Ste. 300
Indianapolis, IN 46260
Homepage: www.GibraltarDesign.com
Email: info@GibraltarDesign.com
Phone: 317.580.5777 Fax: 317.580.5778

PROJECT

21-118

DATE

2/9/23

COORDINATED BY

EJM

DRAWN BY

EKM

CHECKED BY

NAS

COPYRIGHT NOTICE:

THE CONCEPTS, DESIGNS, PLANS, DETAILS, ETC., SHOWN ON THIS DOCUMENT ARE THE PROPERTY OF GIBALTAR DESIGN AND WERE CREATED FOR USE ON THIS SPECIFIC PROJECT. NONE OF THIS INFORMATION SHALL BE USED BY ANY PERSON OR FIRM FOR ANY PURPOSE WITHOUT THE EXPRESS WRITTEN CONSENT OF GIBALTAR DESIGN. THE OWNER MAY RETAIN COPIES FOR INFORMATION AND REFERENCE IN CONNECTION ONLY WITH THIS PROJECT.

REVISIONS

MARK	DATE	ISSUED FOR
AD-1	03/01/23	ADDENDUM NO.1
AD-2	03/06/23	ADDENDUM NO.2

DRAWING

**UNIT "B" FIRST FLOOR FINISH
PLAN**

PROJECT

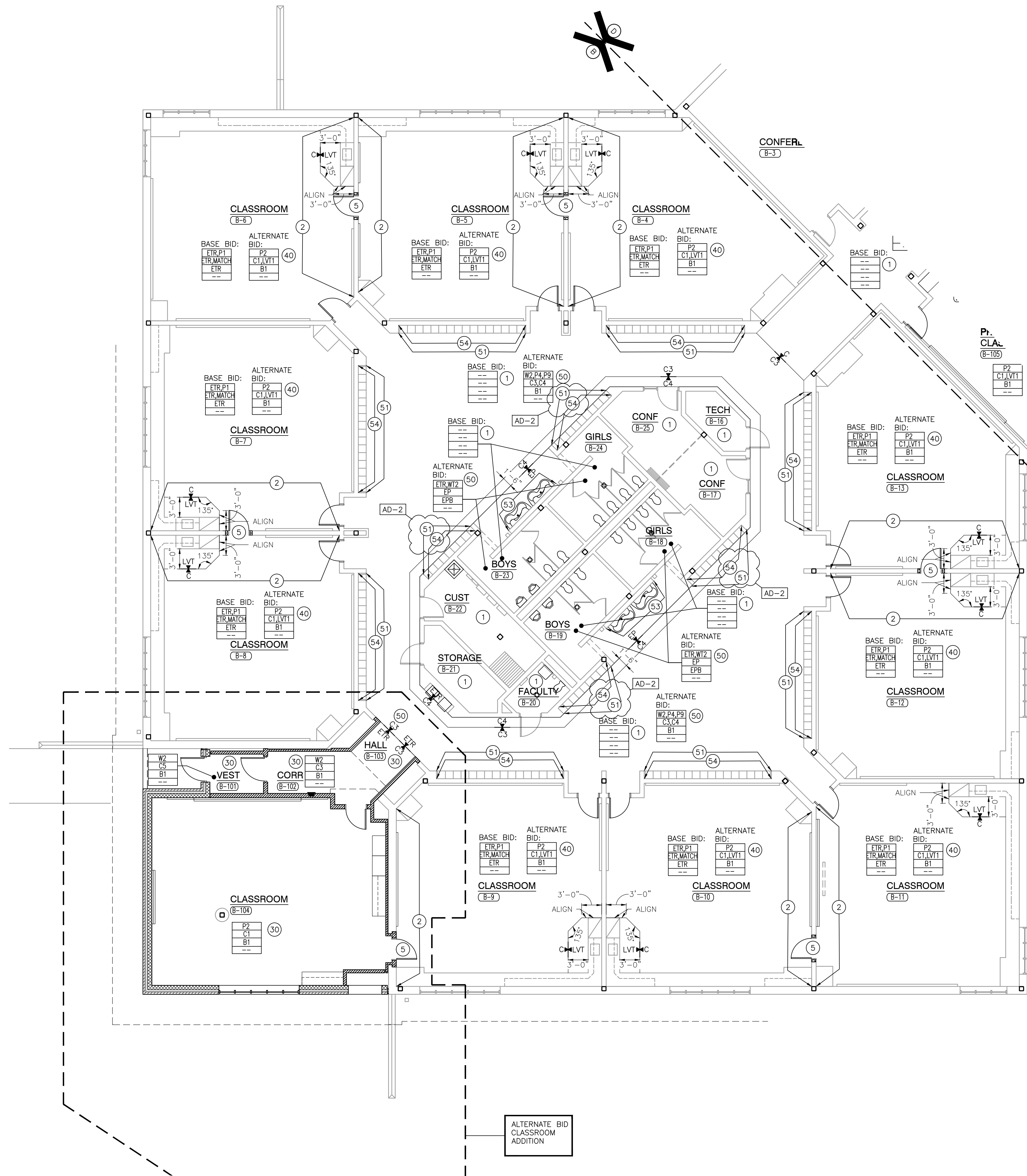
**JERRY ROSS ELEMENTARY SCHOOL
ADDITIONS, RENOVATION, AND
RELATED WORK**

© GIBALTAR DESIGN

SHEET

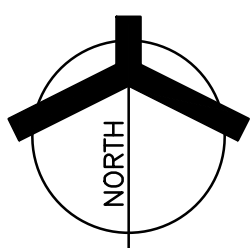
B

A-802



UNIT "B" FIRST FLOOR FINISH PLAN

SCALE: 1/8" = 1'-0"



GENERAL FINISH PLAN NOTES:

- A. REFERENCE FINISH LEGEND FOR FINISH INFORMATION.
- B. REFERENCE FLOOR PATTERN PLANS, EQUIPMENT PLANS, INTERIOR ELEVATIONS, REFLECTED CEILING PLANS AND WRITTEN SPECIFICATIONS FOR ADDITIONAL FINISH INFORMATION.
- C. PRIOR TO INSTALLATION OF NEW FINISHES CONTRACTOR SHALL INSPECT ALL SUBSTRATES. IF A SUBSTRATE IS DEEMED UNACCEPTABLE THE CONTRACTOR SHALL TAKE THE NECESSARY STEPS TO RECTIFY THE SITUATION OR CONTACT THE ARCHITECT WITH THE CONCERN. PROCEEDING WITH THE INSTALLATION OF FINISHES WILL BE CONSTRUED THAT THE INSTALLER AND/OR FINISHER HAS ACCEPTED SAID SUBSTRATE. NO CHANGE ORDER WILL BE ISSUED TO RECTIFY CONCEALED, OR UNSATISFACTORY SUBSTRATE ONCE FINISH WORK HAS PROCEEDED.
- D. PREPARE ALL WALL CONSTRUCTION, NEW AND EXISTING, TO RECEIVE NEW FINISHES AS PER MANUFACTURE'S RECOMMENDED INSTALLATION METHODS AND MATERIALS FOR ALL FINISHES.
- E. ALL FLOORING IS TO BE LEVELED WITHIN 1/4" IN 10'-0" WITH LATEX MATERIAL. MOISTURE CONTENT IN AREA IS TO BE TESTED PRIOR TO INSTALLATION OF FLOORING MATERIAL. CONTRACTOR TO INSTALL FLOORING PER MANUFACTURER'S RECOMMENDED METHOD.
- F. FLOORING CONTRACTOR TO SUBMIT A SEAMING DIAGRAM FOR FLOORING MATERIAL INCLUDING NOTATION OF MATERIAL DIRECTION.
- G. ALL FLOORING TRANSITIONS SHALL COMPLY WITH ADA GUIDELINES.
- H. ALL EXPOSED METAL SURFACES, SUCH AS GRILLES, FIRE EXTINGUISHER CABINETS, ETC. THAT ARE NOTED TO BE PAINTED, SHALL BE PAINTED WITH ALKID TYPE PAINT. COLOR TO BE COORDINATED WITH DESIGNER UNLESS OTHERWISE NOTED.
- I. CONTRACTOR TO PROVIDE AND INSTALL FLOORING TRANSITIONS AS INDICATED ON THE FLOOR PATTERN PLANS, WHERE NONE ARE NOTED, CONTRACTOR SHALL VERIFY REQUIRED TYPE/COLOR WITH ARCHITECT.
- J. THE CONTRACTOR SHALL BE RESPONSIBLE TO VERIFY THAT ALL NEW INTERIOR WALL AND CEILING FINISHES WILL BE CLASS B MINIMUM, WITH A FLAME SPREAD RATING OF 75 MAXIMUM, AND A SMOKE DEVELOPED INDEX OF 450 MAXIMUM, PER IBC SECTION 803.
- K. IN ROOMS WHERE WALLS ARE INDICATED TO BE PAINTED, ALL DOORFRAMES AND WINDOWFRAMES ARE TO BE PAINTED, P5.

FINISH SYMBOL LEGEND:

P1	WALL FINISH
C1	FLOOR FINISH
B1	BASE FINISH
---	MISC FINISH INFORMATION

FLOOR TRANSITION STRIP AS REQUIRED

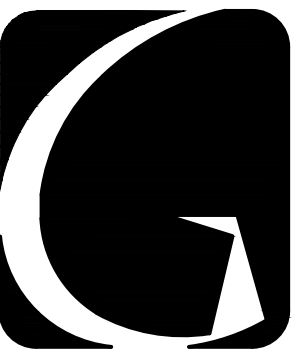
INDICATES DIRECTION OF MATERIAL GRAIN

FINISH PLAN NOTES:

(ALL PLAN NOTES MAY NOT BE INDICATED ON THIS PLAN)

- (1) NO NEW FINISHES THIS ROOM, EXCLUDING DOOR FRAMES CONNECTED TO OTHER ROOMS THAT RECEIVE NEW FINISHES.
- (2) BASE BID: MATCH EXISTING WALL PAINT, EXISTING BASE TO REMAIN.
- (3) EXISTING WALL MURAL TO REMAIN.
- (4) EXISTING ACOUSTICAL WALL PANELS TO REMAIN.
- (5) BASE BID: INFILL CARPET WITH OWNER'S ATTIC STOCK.
- (6) BASE BID: WALL TILE, WT1.

- (30) ALTERNATE BID CLASSROOM ADDITION
- (40) ALTERNATE BID CLASSROOM & CORRIDOR REFRESH
- (41) ALTERNATE BID CLASSROOM & CORRIDOR REFRESH: PAINT MULLIONS P5
- (42) ALTERNATE BID CLASSROOM & CORRIDOR REFRESH:
TARKETT: CARPET, C2g
J&J: CARPET, C2b(70%) + C4b(30%)
- (50) ALTERNATE BID POD COMMONS REFRESH
- (51) ALTERNATE BID POD COMMONS REFRESH: PAINT EXISTING LOCKERS, P4
- (52) ALTERNATE BID POD COMMONS REFRESH:
TARKETT: CARPET, C2g
J&J: CARPET, C2b(70%) + C4b(30%)
- (53) ALTERNATE BID POD COMMONS REFRESH: WALL TILE WT2 AT REMOVED WALL TILE LOCATIONS, REFER TO DEMOLITION PLANS. ALL OTHER RESTROOM WALLS ETR
- (54) ALTERNATE BID POD COMMONS REFRESH: PAINT ABOVE LOCKERS, P9; PAINT BELOW LOCKERS P4
- (60) ALTERNATE BID CAFE & MEDIA CENTER REFRESH
- (61) ALTERNATE BID CAFE & MEDIA CENTER REFRESH: WALL BASE, B1
- (70) ALTERNATE BID MAIN ENTRY FLOORING REPLACEMENT



GIBALTAR
DESIGN

ARCHITECTURE • ENGINEERING • INTERIOR DESIGN

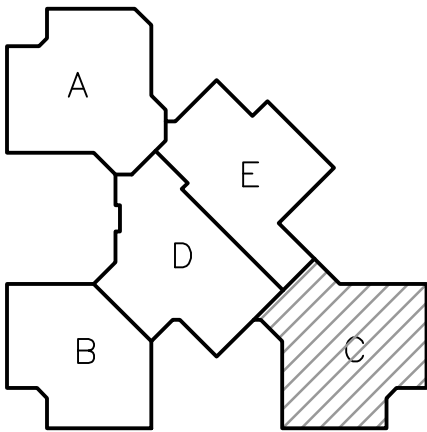
PROJECT

**JERRY ROSS
ELEMENTARY
SCHOOL
ADDITIONS,
RENOVATION,
AND RELATED
WORK**

FOR:

**CROWN POINT COMMUNITY
SCHOOL CORPORATION**

CROWN POINT, INDIANA



FIRST FLOOR KEY PLAN

GIBALTAR DESIGN

9102 N. Meridian St., Ste. 300
Indianapolis, IN 46260
Homepage: www.GibraltarDesign.com
Email: info@GibraltarDesign.com
Phone: 317.580.5777 Fax: 317.580.5778

PROJECT

21-118

DATE

2/9/23

COORDINATED BY

EJM

DRAWN BY

EKM

CHECKED BY

NAS

COPYRIGHT NOTICE:
THE CONCEPTS, DESIGNS, PLANS, DETAILS, ETC., SHOWN ON THIS DOCUMENT ARE THE PROPERTY OF GIBALTAR DESIGN AND WERE CREATED FOR USE ON THIS SPECIFIC PROJECT. NONE OF THIS INFORMATION SHALL BE USED BY ANY PERSON OR FIRM FOR ANY PURPOSE WITHOUT THE EXPRESS WRITTEN CONSENT OF GIBALTAR DESIGN. THE OWNER MAY RETAIN COPIES FOR INFORMATION AND REFERENCE IN CONNECTION ONLY WITH THIS PROJECT.

REVISIONS

MARK	DATE	ISSUED FOR
AD-1	03/01/23	ADDENDUM NO.1
AD-2	03/06/23	ADDENDUM NO.2

DRAWING

**UNIT "C" FIRST FLOOR FINISH
PLAN**

PROJECT

**JERRY ROSS ELEMENTARY SCHOOL
ADDITIONS, RENOVATION, AND
RELATED WORK**

© GIBALTAR DESIGN

SHEET

C

A-803



UNIT "C" FIRST FLOOR FINISH PLAN

SCALE: 1/8" = 1'-0"

