

ADDENDUM NO. 1

December 20, 2023

MEMORIAL OPERA HOUSE – BID PACKAGE #2 (GENERAL TRADES, PLUMBING, MECHANICAL, AND ELECTRICAL PACKAGES)

TO: ALL BIDDERS OF RECORD

This Addendum forms a part of and modifies the Bidding Requirements, Contract Forms, Contract Conditions, the Specifications, and the Drawings dated December 01, 2023 by Schmidt Associates. Acknowledge receipt of the Addendum in the space provided on the Bid Form. Failure to do so may subject the Bidder to disqualification.

This Addendum consists of Page ADD 1-1 through ADD 1-2 and attached Addendum No. 1 from Schmidt Associates dated December 15, 2023 and consisting of 1 page and 5 drawings.

A. SPECIFICATION SECTION 01 12 00 - MULTIPLE CONTRACT SUMMARY

A. BID CATEGORY NO. 1 – GENERAL TRADES/SITEWORK

1. ADD:

Specification Section 22 13 13 – Facility Sanitary Sewer (Site)

B. BID CATEGORY NO. 2 – PLUMBING

1. Delete:

Specification Section 22 13 13 – Facility Sanitary Sewer (Site)

2. **Revise:**

Clarification No. 6:

The Bid Category **No. 2** Contractor shall provide saw cutting, removal and replacement of concrete as required to accommodate work as shown on the P Drawings. The Bid Category **No. 2** Contractor shall also include scanning of floors prior to performing any saw cutting.

C. **BID CATEGORY NO. 4 – ELECTRICAL**

1. **Add:**

Clarification No. 7:

The **Bid Category No. 4 Contractor** shall provide saw cutting, removal and replacement of concrete as required to accommodate work as shown on the E Drawings. The **Bid Category No. 4 Contractor** shall also include scanning of floors prior to performing any saw cutting.

ADDENDUM NO. 1

DECEMBER 15, 2023

PREPARED BY SCHMIDT ASSOCIATES FOR:
RENOVATION OF MEMORIAL OPERA HOUSE
PORTER COUNTY BOARD OF COMMISSIONERS

This Addendum consists of 1 Addendum page and 5 attachment pages totaling 6 pages.

Acknowledge receipt of this Addendum by inserting its number on the Bid Form. Failure to do so may subject the Bid to disqualification. This Addendum is part of the Contract Documents.

Bidder is encouraged to verify with reprographer of record all Addenda issued (do not rely exclusively on third party plan room services).

PART 1 - CHANGES TO PRIOR ADDENDA (NOT APPLICABLE)

PART 2 - CHANGES TO THE PROJECT MANUAL (NOT APPLICABLE)

PART 3 - CHANGES TO THE DRAWINGS

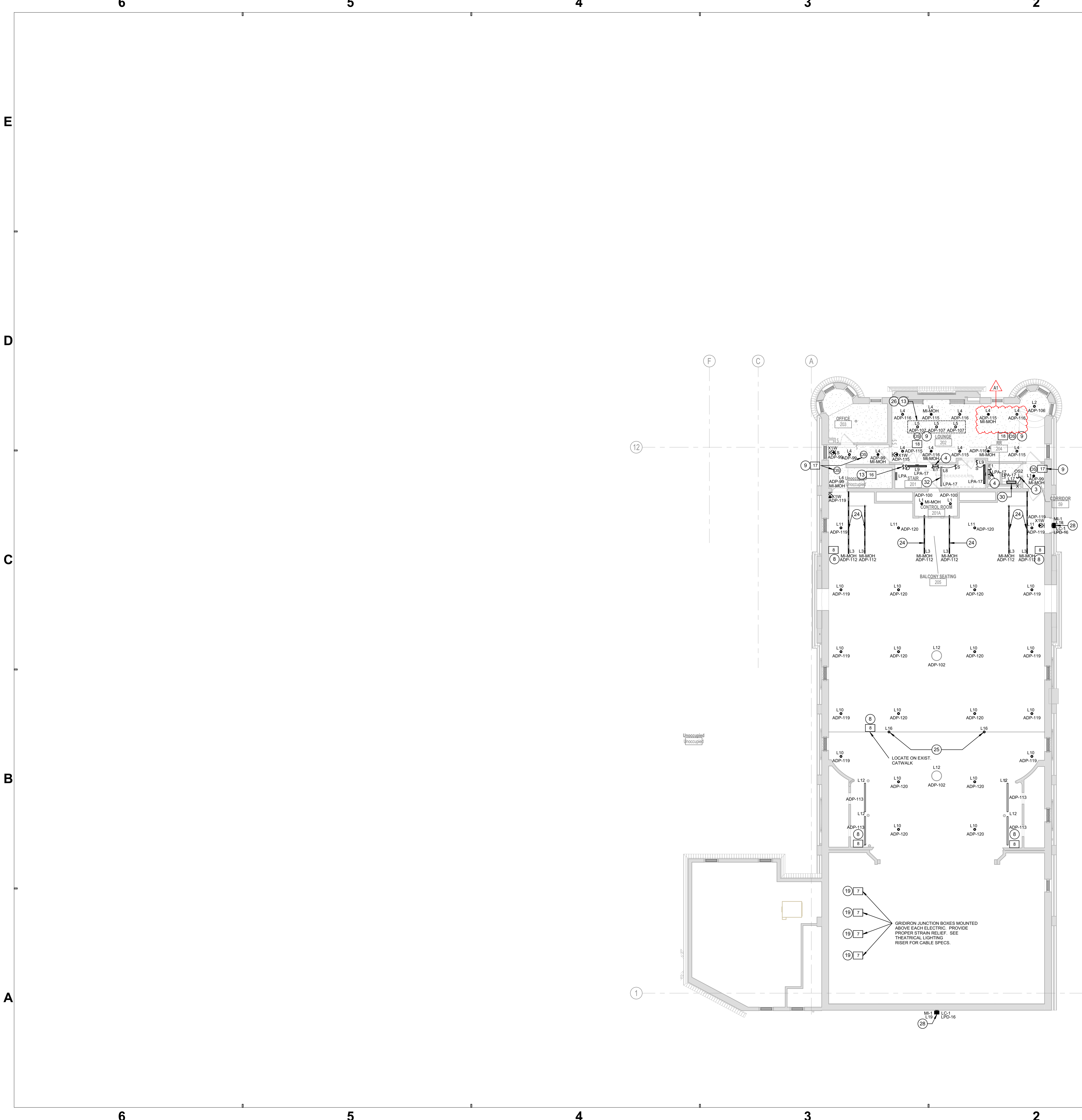
Modifications described herein shall be incorporated in the Drawings. All other Work shall remain unchanged.

3.1 DRAWING SHEETS: ADDITIONS, DELETIONS AND REPLACEMENTS

DRAWING NO.	INDICATE ACTION: ADD (A), DELETE (D), DELETE & REPLACE (R),
E-SERIES DRAWINGS	
EL102.2	DELETE AND REPLACE
E-401.2	DELETE AND REPLACE
E-603.2	DELETE AND REPLACE
E-604.2	DELETE AND REPLACE
E-605.2	DELETE AND REPLACE

END OF ADDENDUM 1

ALL RIGHTS RESERVED. NO PART OF THIS DOCUMENT MAY BE REPRODUCED OR TRANSMITTED IN ANY FORM OR BY ANY MEANS, ELECTRONIC OR MECHANICAL, WITHOUT PERMISSION IN WRITING FROM SCHMIDT ASSOCIATES. PROJECT NO. 2023-084-RMO. DATE: 12.01.2023. BY: SARAH K. HEMPEL, ARCHITECT. 12/01/2023 10:10:48 AM



GENERAL LIGHTING NOTES	
#	NOTES
A	REFER TO SHEET E-001 FOR ADDITIONAL INFORMATION.
B	AT STAGE AREA, PROVIDE BLACK LIGHTING CONTROL DEVICES AND FACEPLATES. PAINT CONDUIT, FITTINGS, AND BOXES BLACK.
C	EMERGENCY LIGHT FIXTURES NOTED WITH "M-MOH" (MINI INVERTER - MEMORIAL OPERA HOUSE) ARE SERVED BY INVERTER AS PART OF THEATRICAL LIGHTING SYSTEM. REFER TO THEATRICAL LIGHTING DRAWINGS AND SPECIFICATIONS FOR ADDITIONAL INFORMATION.

LIGHTING PLAN NOTES	
#	NOTES
1	FEED POWER FOR AISLE LIGHTS IN HOUSE FLOOR FROM BASEMENT.
2	REUSE EXISTING LIGHT FIXTURE ROUGH-IN TO SERVE NEW LIGHT FIXTURE.
3	SWITCH SERVES LIGHT FIXTURES IN SPACE ON ONE BUTTON INCLUDING LIGHT FIXTURE OF EXHAUST FAN / LIGHT COMBO UNIT AND EXHAUST FAN ON OTHER BUTTON.
4	CIRCUIT EMERGENCY BATTERY PACK TO EXISTING LIGHTING CIRCUIT SERVING THIS ROOM / AREA.
5	EXTEND HOUSE LIGHTING CONTROLS CABLING AND REINSTALL EXISTING HOUSE LIGHTING CONTROLS OVERRIDE RECESSED IN WALL AT NEW LOCATION.
6	CIRCUIT NEW LIGHT FIXTURES TO EXISTING LIGHTING CIRCUIT SERVING THIS ROOM / AREA.
7	DMX PLUG-IN STATION. REFER TO THEATRICAL LIGHTING MATRIX FOR ADDITIONAL INFORMATION.
8	ALTERNATE: DMX PLUG-IN STATION UNDER STAGE LIGHTING ALTERNATE BID ONLY. REFER TO THEATRICAL LIGHTING MATRIX FOR ADDITIONAL INFORMATION.
9	OCCUPANCY SENSOR SERVING ARCHITECTURAL LIGHTING SYSTEM. REFER TO THEATRICAL LIGHTING DRAWINGS AND SPECIFICATIONS FOR ADDITIONAL INFORMATION.
10	LIGHTING CONTROL STATION SERVING ARCHITECTURAL LIGHTING SYSTEM. REFER TO THEATRICAL LIGHTING DRAWINGS AND SPECIFICATIONS FOR ADDITIONAL INFORMATION.
11	BATTERY INVERTER AND EMERGENCY SENSOR. REFER TO THEATRICAL LIGHT DRAWINGS AND SPECIFICATIONS FOR ADDITIONAL INFORMATION.
12	ALTERNATE: ARC LAMP DRIVER. REFER TO THEATRICAL LIGHT DRAWINGS AND SPECIFICATIONS FOR ADDITIONAL INFORMATION.
13	LOCATE GLASS GLOBE ACCENT LIGHT FIXTURES AT +8'-0" A.F.F. TO BOTTOM OF FIXTURE GLOBE. CENTER GROUP OF THREE FIXTURES OVER BAR COUNTER. SPACE LIGHT FIXTURES #4'-0" ON CENTER.
14	COORDINATE RECESSED STAIR AND STAGE EDGE LIGHTS WITH A-SERIES DRAWINGS.
15	PROVIDE 3" CONDUIT TO CONTROL BOOTH ON FIRST FLOOR.
16	WIRELESS ACCESS POINT. REFER TO THEATRICAL LIGHTING DRAWINGS AND SPECIFICATIONS FOR ADDITIONAL INFORMATION.
17	PORTABLE TOUCH SCREEN FOR CONTROL OF ARCHITECTURAL LIGHTING SYSTEM. REFER TO THEATRICAL LIGHTING DRAWINGS AND SPECIFICATIONS FOR ADDITIONAL INFORMATION.
18	DMX DRIVER. REFER TO THEATRICAL LIGHTING DRAWINGS AND SPECIFICATIONS FOR ADDITIONAL INFORMATION.
19	ALTERNATE: DMX GRIDIRON JUNCTION BOX UNDER STAGE LIGHTING ALTERNATE BID ONLY. REFER TO THEATRICAL LIGHTING DRAWINGS AND SPECIFICATIONS FOR ADDITIONAL INFORMATION.
20	SIMPLE NETWORK BOX POE. REFER TO THEATRICAL LIGHTING DRAWINGS AND SPECIFICATIONS FOR ADDITIONAL INFORMATION.
21	COORDINATE STAGE EDGE LIGHTS WITH PIT LIFT DRAWINGS AND THEATRICAL LIGHTING SYSTEM DRAWINGS.
22	ALTERNATE: PROVIDE ARCLAMP TO SERVE THIS LIGHT FIXTURE UNDER ARCHITECTURAL LIGHTING ALTERNATE BID. REFER TO THEATRICAL LIGHTING SPECIFICATIONS FOR ADDITIONAL INFORMATION.
23	NET PLUG-IN STATION. REFER TO THEATRICAL LIGHTING DRAWINGS AND SPECIFICATIONS FOR ADDITIONAL INFORMATION.
24	STAGE EDGE AND AISLE LIGHTING CONTROLLED BY UFR2. REFER TO THEATRICAL LIGHTING DRAWINGS AND SPECIFICATIONS FOR ADDITIONAL INFORMATION.
25	CIRCUIT STAGE LIGHT FIXTURES TO EXISTING CIRCUITS FROM EXISTING STRAND DIMMER RACK. REFER TO THEATRICAL LIGHTING DRAWINGS AND SPECIFICATIONS FOR ADDITIONAL INFORMATION.
26	GLASS GLOBE ACCENT LIGHT FIXTURES CONTROLLED BY UFO MODULE. REFER TO THEATRICAL LIGHTING DRAWINGS AND SPECIFICATIONS FOR ADDITIONAL INFORMATION.
27	PROVIDE LIGHT FIXTURE SURFACE MOUNTED TO FACE OF MULLION DIRECTLY ABOVE DOOR. COORDINATE WIRING THROUGH STOREFRONT SYSTEM.
28	PROVIDE EXTERIOR WALL PACK AT SAME LOCATION AS PREVIOUSLY REMOVED FIXTURE.
29	SUSPEND FIXTURES IN THIS SPACE +8'-0" A.F.F. TO BOTTOM OF FIXTURES.

2A SECOND FLOOR LIGHTING PLAN
1/8" = 1'-0"

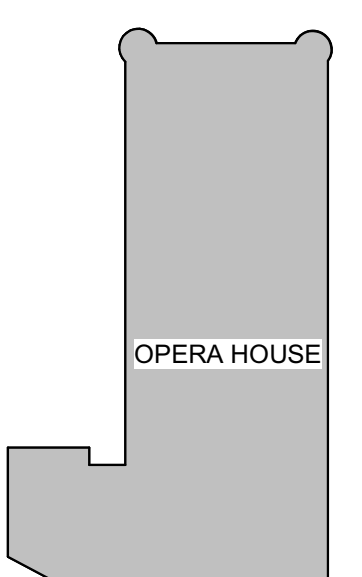

SCHMIDT ASSOCIATES
415 Massachusetts Avenue
Indianapolis, IN 46204
www.schmidt-arch.com

Project No. 2023-084-RMO
Project Date 12.01.2023
Produced EAG


Sarah K. Hempel
These Drawings and Specifications, and all copies thereof are and shall remain the property and copyright of the Architect. They shall be used only with respect to this Project and are not to be used on any other Project or Work without prior written permission from the Architect.

#	Revision	Date
A1	Addendum #1	12.15.2023

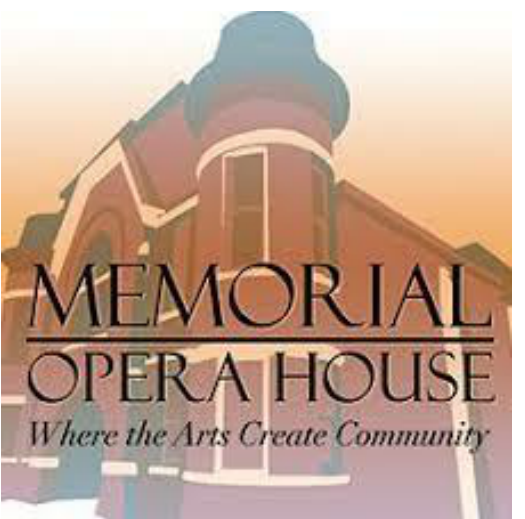
104 Indiana Ave,
Valparaiso, IN 46383



OPERA HOUSE

KEY PLAN

PORTER COUNTY BOARD OF COMMISSIONERS



MEMORIAL OPERA HOUSE - MAIN PACKAGE - MAIN PACKAGE

SECOND FLOOR LIGHTING PLAN

EL102.2

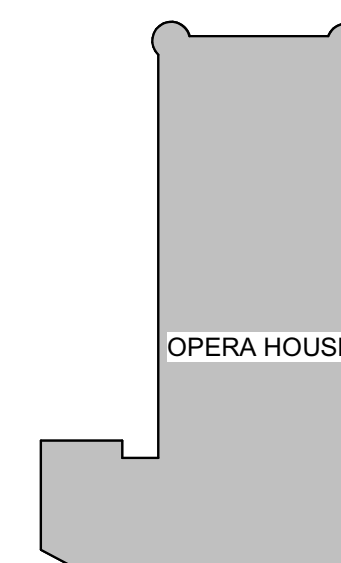
Project No. 2023-084.RMO
Project Date 12.01.2023
Produced EAG



These Drawings and Specifications, and all copies thereof are and shall remain the property and copyright of the Architect. They shall be used only with respect to this Project and are not to be used on any other Project or Work without prior written permission from the Architect.

#	Revision	Date
A1	Addendum #1	12.15.2023

104 Indiana Ave,
Valparaiso, IN 46383



KEY PLAN

PORTER COUNTY
BOARD OF
COMMISSIONERS



MEMORIAL OPERA
HOUSE - MAIN
PACKAGE - MAIN
PACKAGE

ENLARGED PLANS

E-401.2

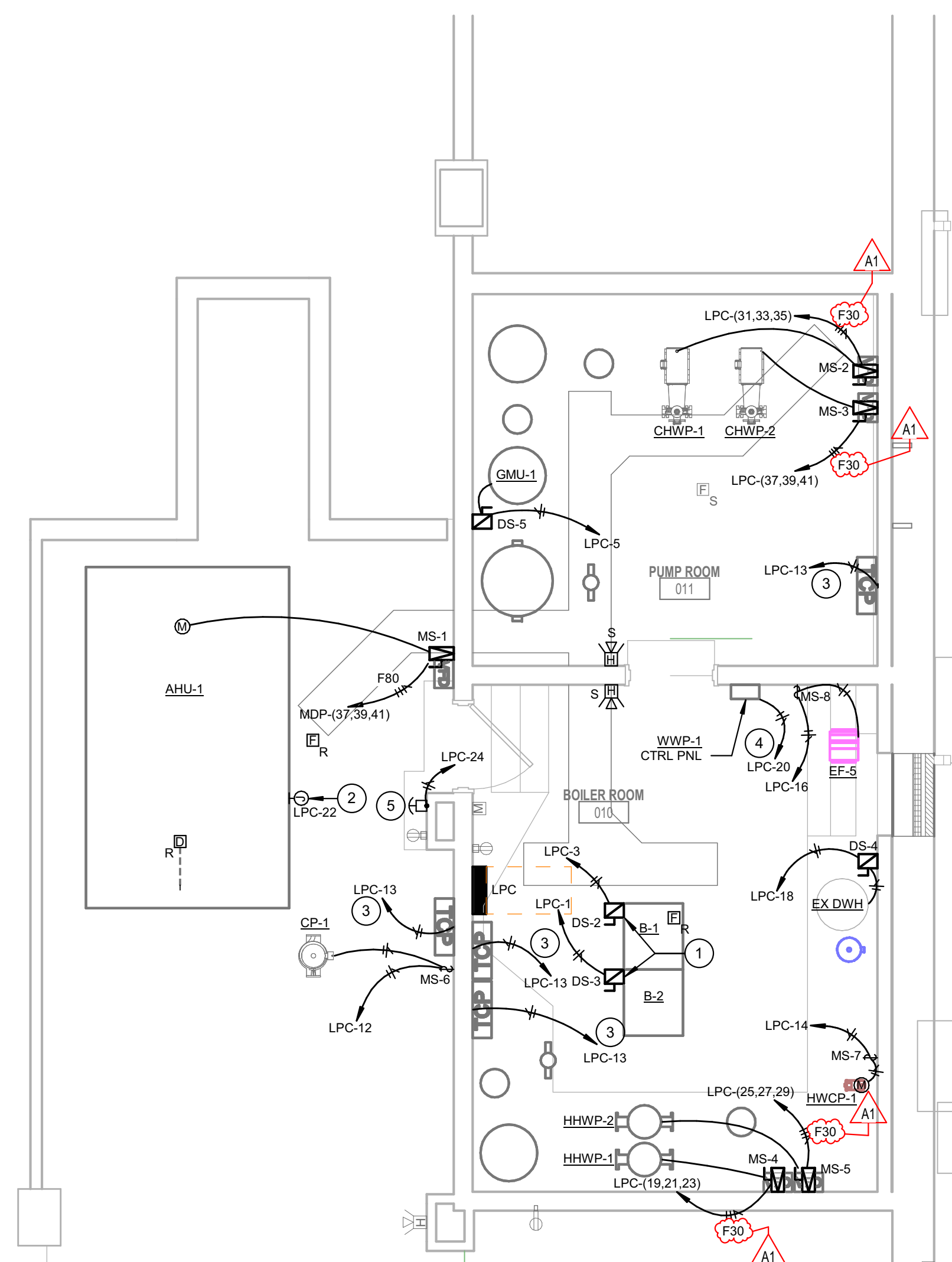
#	NOTES
A	REFER TO SHEET E-001 FOR ADDITIONAL INFORMATION.

#	NOTES
---	-------

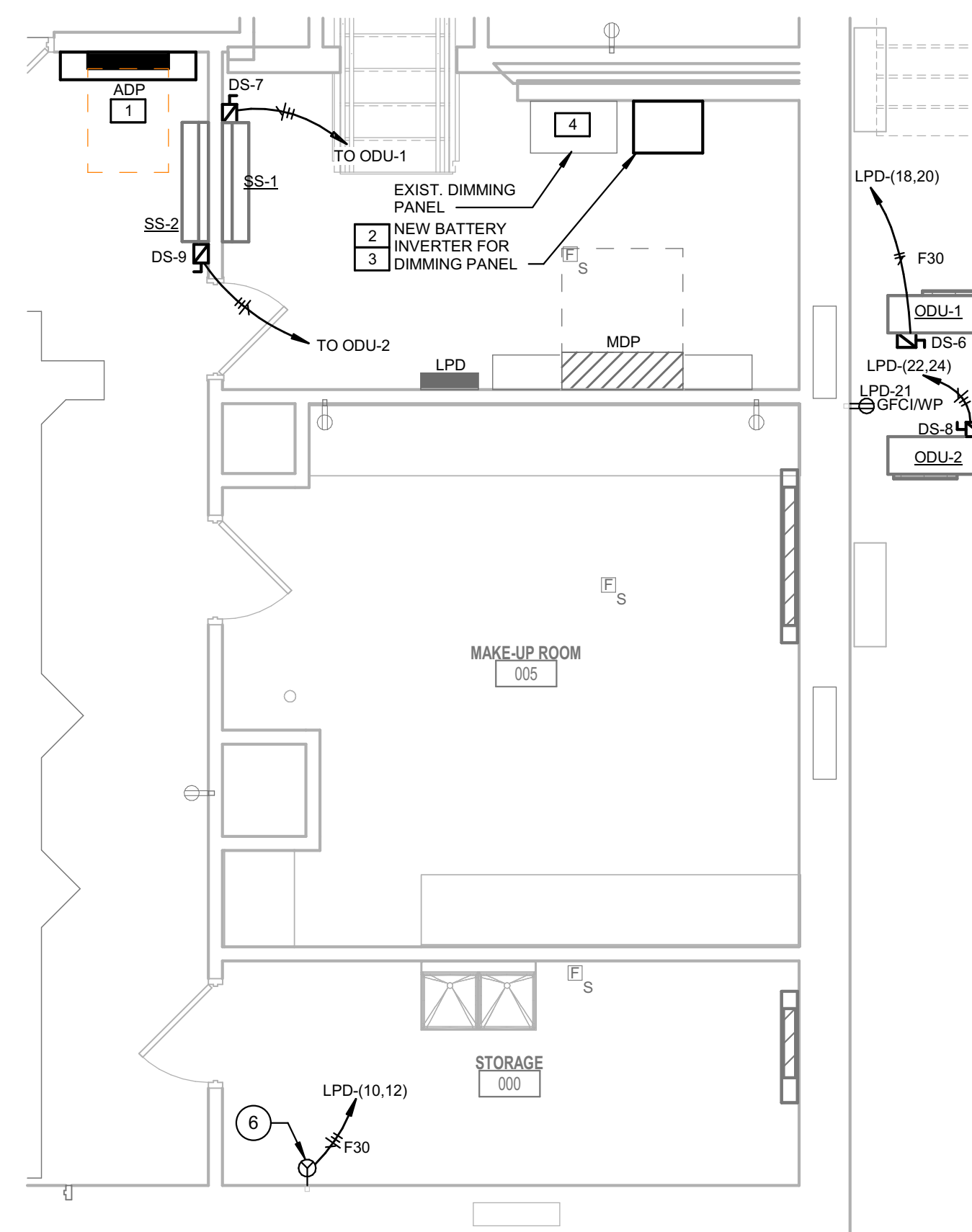
#	NOTES
A	REFER TO SHEET E-001 FOR ADDITIONAL INFORMATION.

#	NOTES
---	-------

- | | |
|---|---|
| 1 | PROVIDE UNISUIT MOUNTING FRAME FOR DISCONNECT SWITCHES |
| 2 | CIRCUIT CONNECTION TO SERVE AHU RECEPTACLE |
| 3 | PROVIDE CIRCUIT INDICATED FOR TEMPERATURE CONTROL PANEL. COMPLETE |
| 4 | PROVIDE CIRCUIT INDICATED FOR WASTE WATER PUMP. CONNECT COMPLETE THROUGH CONTROL PANEL |
| 5 | PROVIDE EMERGENCY SHUT-OFF BUTTON FOR ALL BOILERS AT +46" A.F.F. TO C.L. AT EACH EXIT FROM THE MECHANICAL SPACE USING 120V CIRCUIT INDICATED. PROVIDE SHUNT TRIP AND 15 AMP CIRCUIT BREAKER. PROVIDE PLACARD SIGN ABOVE BUTTON TO INDICATE LOCATION OF SHUT-OFF. REFER TO BOILER EMERGENCY STOP DIAGRAM ON SHEET E-602. |
| 6 | NEMA 10-30R FOR DRYER AT +36" A.F.F. TO C.L. COORDINATE LOCATION WITH |



2C ENLARGED BASEMENT POWER PLAN - NORTH PORTION
1/4" = 1'-0"



2A ENLARGED BASEMENT POWER PLAN - SOUTH PORTION
1/4" = 1'-0"

60322 - JENNIFER J. SCHMIDT
DESIGN AND ARCHITECTURE
11/15/2023 10:04 AM

GENERAL LIGHT FIXTURE SCHEDULE NOTES	
#	NOTES
A	PROVIDE LAMPS FOR ALL LIGHT FIXTURES SPECIFIED.
B	REFER TO LIGHT FIXTURE SCHEDULE AND REFLECTED CEILING PLANS FOR MOUNTING REQUIREMENTS, CEILING TYPES, AND FINAL LOCATIONS. PROVIDE APPROPRIATE MOUNTING TRIM REQUIRED FOR CEILING TYPE.
C	PROVIDE FACTORY INSTALLED DISCONNECTS FOR ALL LINEAR FIXTURES.
D	PROVIDE SELF-DIAGNOSTICS AND SELF-TESTING FOR ALL LIFE SAFETY FIXTURES (EXIT FIXTURES, WALL PACKS, INVERTERS BALLASTS, ETC.)
E	ALLOWANCE PRICING LISTED IN LIGHT FIXTURE SCHEDULE ARE PROVIDED FROM LIGHTING SUPPLIER DURING THE DESIGN. CONTRACTOR TO VERIFY FINAL NUMBER FROM LIGHTING SUPPLIER PRIOR TO BID.

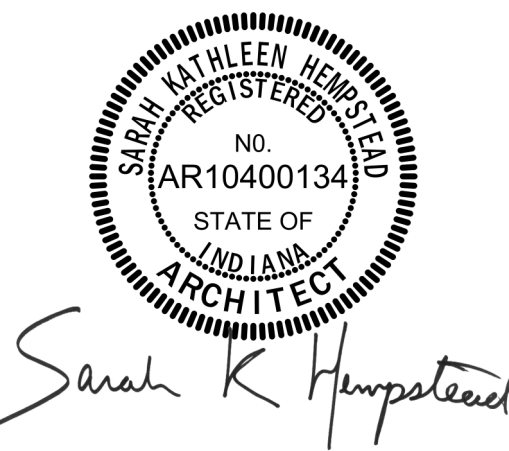
265119/265619/26213.1 - INTERIOR/EXTERIOR/EMERGENCY & EXIT LIGHT FIXTURES SCHEDULE												
LABEL	DESCRIPTION	VOLTAGE	SOURCE				MOUNTING	LENS/REFLECTOR	CERTIFICATIONS	ACCEPTABLE MANUFACTURERS	LABEL	
			TYPE	LUMENS	WATTS	CCT						
E1	LED EMERGENCY LIGHT, 25" ON CENTER COVERAGE, ADJUSTABLE OPTICS, SELF DIAGNOSTIC, WHITE FINISH, SEALED NICKEL CADMIUM BATTERY.	120 V	LED	N/A	10 W	4000 K	SURFACE/WALL	N/A	N/A	SURE-LITES SEL25 DUAL-LITE EV LITHONIA ELM2	E1	
E2	LED EMERGENCY LIGHT, 25" ON CENTER COVERAGE, ADJUSTABLE OPTICS, SELF DIAGNOSTIC, BLACK FINISH, SEALED NICKEL CADMIUM BATTERY.	120 V	LED	N/A	10 W	4000 K	SURFACE/WALL	N/A	N/A	SURE-LITES SEL25 DUAL-LITE EV LITHONIA ELM2	E2	
L1	4" ROUND LED DOWNLIGHT, SELF-FLANGED TRIM, WIDE DISTRIBUTION (75"), 0-10V DIMMING.	120 V	LED	2,000 LM	22 W	2700 K	RECESSED IN DRYWALL	SEMI-SPECULAR CLEAR	ES	PORTFOLIO LD4B PRESCOLITE LTR-4RD GOTHAM EVO	L1	
L2	6-7 LAMP PENDANT CHANDELIER, BLACK FINISH, BLACK CANOPY, 1-10V DIMMING.	120 V	LED	922 LM	23 W	2700 K	SURFACE / CEILING	SEMI-SPECULAR CLEAR	N/A	BOVER CANDLE S/BL OCL GS1-P7CE	L2	
L3	CARPET-TO-CARPET LED AISLE LIGHT, 6" LED SPACING, 0-10V DIMMING, 0.5 W/LINEAR FOOT.	120/277 V	LED	N/A	1 W	RED	FLOOR MOUNTED IN CARPET	CLEAR LENS	N/A	CELESTIAL LIGHTING GEMINI 2000 MICO LIGHTING NLA-1880 TIVOLI SOFT AISLE TITANIUM	L3	
L4	4" ROUND LED DOWNLIGHT, SELF-FLANGED TRIM, WIDE DISTRIBUTION (75"), 0-10V DIMMING.	120 V	LED	4,000 LM	42 W	3500 K	RECESSED IN DRYWALL	SEMI-SPECULAR CLEAR	ES	PORTFOLIO LD4B PRESCOLITE LTR-4RD GOTHAM EVO	L4	
L5	5" DIAMETER SPHERICAL LED PENDANT, 0-10V DIMMING DRIVER, BLACK FINISH.	120 V	LED	500 LM	6 W	2700 K	SURFACE / CEILING	FROSTED CURVED ACRYLIC	N/A	OCL GB1-P1CF CANNAN P9346-5	L5	
L6	DECORATIVE CHANDELIER, OPAL GLASS GLOBES, BRASS FINISH, DIMMABLE, (25) 5 WATT, G9 PIN LAMPS.	120 V	(25) G9 PIN, 5 WATT MAX.	9,000 LM	125 W	2700 K	SURFACE / CEILING	OPAL GLASS	N/A	VISUAL COMFORT & CO. 700LSVGO PROVIDE AN ALLOWANCE OF \$2,840 PER FIXTURE FOR MATERIAL ONLY, ADD LABOR REQUIRED FOR INSTALLATION.	L6	
L7	15" WIDE DECORATIVE WALL SCONCE, WHITE GLASS SHADE, ANTIQUE BRASS FINISH, (2) 8W A LAMPS, DIMMABLE.	120 V	LED	1,500 LM	16 W	3000 K	SURFACE/WALL	WHITE GLASS	N/A	VISUAL COMFORT SIENA SS 2002HAB-WG PROVIDE AN ALLOWANCE OF \$600 PER FIXTURE FOR MATERIAL ONLY, ADD LABOR REQUIRED FOR INSTALLATION.	L7	
L8	4" LENSED LED STRIP LIGHT, 0-10V DIMMING, WHITE FINISH.	120 V	LED	5,400 LM	45 W	3500 K	SURFACE MOUNTED	SEMI-FROSTED LENS	N/A	METALLUX SNLED COLUMBIA MPS LITHONIA ZL1D	L8	
L8E	4" LENSED LED STRIP LIGHT, 0-10V DIMMING, WHITE FINISH, INTEGRAL BATTERY INVERTER, 0-10V DIMMING.	120 V	LED	5,400 LM	45 W	3500 K	CHAIN MOUNTED TO STRUCTURE	SEMI-FROSTED LENS	N/A	METALLUX SNLED COLUMBIA MPS LITHONIA ZL1D	L8E	
L9	4" LENSED LED STRIP LIGHT, 0-10V DIMMING, WHITE FINISH.	120/277 V	LED	3,000 LM	27 W	3500 K	SURFACE/WALL	SEMI-FROSTED CURVED LENS	N/A	METALLUX SNLED COLUMBIA MPS LITHONIA CLX	L9	
L10	LED RETROFIT HOUSE LIGHT, LINE VOLTAGE DIMMING, E11 1-3/4" BASE, SAFETY CABLE.	120 V	LED	6024 LM	49 W	3000 K	RECESSED IN DRYWALL	SHORT 70	ES	CANTO RETRO-FUSION 500 R500-F PROVIDE AN ALLOWANCE OF \$1,000 PER FIXTURE FOR MATERIAL ONLY, ADD LABOR REQUIRED FOR INSTALLATION.	L10	
L11	LED RETROFIT HOUSE LIGHT, LINE VOLTAGE DIMMING, E26 BASE, SAFETY CABLE, DIFFUSER.	120 V	LED	2217 LM	15 W	3000 K	RECESSED IN DRYWALL	SHORT 74	ES	CANTO RETRO-FUSION 150 R150 TALL-F PROVIDE AN ALLOWANCE OF \$800 PER FIXTURE FOR MATERIAL ONLY, ADD LABOR REQUIRED FOR INSTALLATION.	L11	
L12	6" MICRO PROFILE LED FIXTURE, WHITE FINISH, 0-100% DIMMING.	120 V	LED	588 LM	6 W	3000 K	SURFACE MOUNTED, HINGE	120 DEGREE OPTIC, CLEAR LIGHT DIFFUSE, NO REFLECTOR	N/A	BOCA FLASHER NANOLUME PROVIDE AN ALLOWANCE OF \$600 PER FIXTURE FOR MATERIAL ONLY, ADD LABOR REQUIRED FOR INSTALLATION.	L12	
L13	STAGE EDGE LED LIGHT, 12" LED SPACING, COORDINATE LENGTH IN FIELD, DMX DIMMING.	120/277 V	LED	N/A	1 W	2700 K	RECESSED IN FLOOR	CLEAR LENS	N/A	FUTURE LIGHT INC. EDGE-LYTE CALL AL550T-C TIVOLI STAGE EDGE (STEG)	L13	
L14	4"x4" EXTRUDED ALUMINUM LED, 0-10V DIMMING.	120 V	LED	2500 LM	26 W	2700 K	RECESSED IN DRYWALL	FLAT WHITE ACRYLIC LENS	N/A	FOCAL POINT FSM4LS FINELITE HP4 PINNACLE EDGE	L14	
L15	4" LENSED LED STRIP LIGHT, 0-10V DIMMING, WHITE FINISH.	120 V	LED	5,400 LM	45 W	3500 K	CHAIN MOUNTED TO STRUCTURE	SEMI-FROSTED LENS	N/A	METALLUX SNLED COLUMBIA MPS LITHONIA ZL1D	L15	
L16	FRONT OF HOUSE STAIR LIGHT FIXTURE, PAR RGBL, BLACK FINISH, 20A TWIST LOCK PLUG, SAFETY CABLE.	120 V	LED	5708 LM	50 W	NA	C-CLAMP	CLEAR LENS	N/A	ETC COLORSOURCE SPOT JR. CSSPOTJR2550 PROVIDE AN ALLOWANCE OF \$1,500 PER FIXTURE FOR MATERIAL ONLY, ADD LABOR REQUIRED FOR INSTALLATION.	L16	
L17	DECORATIVE THREE-LAMP VANITY, VINTAGE BRASS FINISH.	120 V	LED	1,000 LM	15 W	3000 K	SURFACE/WALL	OPAL GLASS	N/A	ALORA WV320323VB PROVIDE AN ALLOWANCE OF \$485 PER FIXTURE FOR MATERIAL ONLY, ADD LABOR REQUIRED FOR INSTALLATION.	L17	
L18	LED WALL LIGHT, DIE-CAST ALUMINUM HOUSING, DARK BRONZE FINISH, U.L. LISTED FOR WET LOCATIONS.	120/277 V	LED	2,000 LM	15 W	4000 K	SURFACE/WALL	TYPE III DISTRIBUTION	DLC	BEACON RWL1 SPOTZER WPPR LITHONIA WST	L18	
L19	LED WALL LIGHT, DIE-CAST ALUMINUM HOUSING, DARK BRONZE FINISH, U.L. LISTED FOR WET LOCATIONS.	120/277 V	LED	4,500 LM	37 W	4000 K	SURFACE/WALL	TYPE III DISTRIBUTION	DLC	BEACON RWL1 LUMINAIRE AXC34A LITHONIA WST	L19	
L20E	24" EXTERIOR SURFACE MOUNTED EXTRUDED ALUMINUM LED FIXTURE, U.L. LISTED WET LOCATION, BRONZE FINISH, REMOTE MICRO INVERTER OPERATING 25W LOAD FOR 90 MINUTES.	120/277 V	LED	900 LM	10 W	4000 K	SURFACE/WALL	DIFFUSED POLYCARBONATE	N/A	LUMINAIRE AEL24 PROVIDE AN ALLOWANCE OF \$1,032 PER FIXTURE FOR MATERIAL ONLY, ADD LABOR REQUIRED FOR INSTALLATION.	L20E	
L21E	72" EXTERIOR SURFACE MOUNTED EXTRUDED ALUMINUM LED FIXTURE, INTEGRAL BATTERY INVERTER, U.L. LISTED WET LOCATION, BRONZE FINISH, SELF-TESTING, SELF-CONTAINED 90 MINUTE EMERGENCY BATTERY PACK.	120/277 V	LED	3,000 LM	30 W	4000 K	SURFACE/WALL	DIFFUSED POLYCARBONATE	N/A	LUMINAIRE AEL72 PROVIDE AN ALLOWANCE OF \$1,697 PER FIXTURE FOR MATERIAL ONLY, ADD LABOR REQUIRED FOR INSTALLATION.	L21E	
L22	DECORATIVE CEILING FLUSH MOUNT FIXTURE, OPAL GLASS GLOBES, BRASS FINISH, DIMMABLE, (5) 5 WATT, G9 PIN LAMPS.	120/277 V	(5) G9 PIN, 5 WATT MAX.	1,960 LM	25 W	2700 K	SURFACE / CEILING	OPAL GLASS	N/A	VISUAL COMFORT & CO. 700LSVGO PROVIDE AN ALLOWANCE OF \$800 PER FIXTURE FOR MATERIAL ONLY, ADD LABOR REQUIRED FOR INSTALLATION.	L22	
L23	2X2 LED FLAT PANEL, 0-10V DIMMING, SELECTABLE COLOR TEMPERATURE AND LUMEN OUTPUT, SET TO 3500K AND 2,500 LM.	120/277 V	LED	2,500/3,200/4,000 LM SELECTABLE	40 W	3500K/4000K/5000K SELECTABLE	RECESSED IN GRID	SATIN WHITE	DLC	METALLUX CGTS COLUMBIA CBT LITHONIA CPX	L23	
X1W	LED EXIT LIGHT, MATTE BLACK DIE-CAST ALUMINUM HOUSING, BRUSHED ALUM, SINGLE FACE, STENCIL FACE, GREEN LETTERS, SELF-POWERED, NICKEL-CADMIUM BATTERY, SELF-DIAGNOSTIC/SELF-TESTING MODULE.	120 V	LED	N/A	5 W	N/A	UNIVERSAL	N/A	N/A	SURE-LITES CX DUAL-LITE SE LITHONIA LE	X1W	
X2C	LED GLASS EXIT LIGHT, MATTE BLACK DIE-CAST ALUMINUM HOUSING, BRUSHED ALUM, SINGLE FACE, GREEN LETTERS, SELF-POWERED, NICKEL-CADMIUM BATTERY, SELF-DIAGNOSTIC/SELF-TESTING MODULE.	120 V	LED	N/A	5 W	N/A	UNIVERSAL	N/A	N/A	SURE-LITES EUR DUAL-LITE LESC LITHONIA EDGR	X2C	
X2W	LED GLASS EXIT LIGHT, MATTE BLACK DIE-CAST ALUMINUM HOUSING, BRUSHED ALUM, SINGLE FACE, GREEN LETTERS, SELF-POWERED, NICKEL-CADMIUM BATTERY, SELF-DIAGNOSTIC/SELF-TESTING MODULE.	120 V	LED	N/A	5 W	N/A	UNIVERSAL	N/A	N/A	SURE-LITES EUS DUAL-LITE LESCW LITHONIA EDG	X2W	

263323.1 - CENTRAL BATTERY EQUIPMENT FOR EMERGENCY LIGHTING SCHEDULE										
LABEL	LOCATION		EQUIPMENT RATINGS				INPUT/OUTPUT CIRCUIT		ACCESSORIES	REMARKS
	NUMBER	NAME	VOLTAGE	MINIMUM OUTPUT FOR 90-MINUTES (W/VA)	MOUNT	NEMA ENCL	PANEL	CIRCUIT		
MI-1	006	ELECTRICAL	120/277V	220	SURFACE	1	LPD	23	SELF-DIAGNOSTICS OVERRIDE FOR 0-10V DIMMING SYSTEM	

262913.1 - LIGHTING CONTACTORS SCHEDULE												
LABEL	LOCATION		EQUIPMENT RATINGS				COIL CIRCUIT			CONTROL	CIRCUIT(S) CONTROLLED	REMARKS
	NUMBER	NAME	VOLTAGE	AMPERAGE	POLES	NEMA ENCL	ACCESSORIES	VOLTAGE	PANEL	CIRCUIT		
LC-1	006	ELECTRICAL	600 V	30 A	8	NEMA 1	H-O-A PILOT LIGHT DDC INTEGRATION	120 V	LPD	14	PHOTOCELL LOCATED ON ROOF	



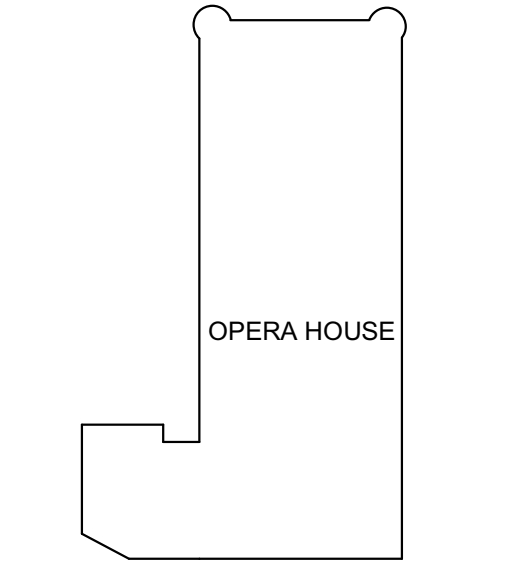
Project No. 2023-084.RMO
Project Date 12.01.2023
Produced EAG



These Drawings and Specifications, and all copies thereof are and shall remain the property and copyright of the Architect. They shall be used only with respect to this Project and are not to be used on any other Project or Work without prior written permission from the Architect.

#	Revision	Date
A1	Addendum #1	12.15.2023

104 Indiana Ave,
Valparaiso, IN 46383



KEY PLAN

PORTER COUNTY
BOARD OF
COMMISSIONERS



MEMORIAL OPERA
HOUSE - MAIN
PACKAGE - MAIN
PACKAGE

LIGHTING SCHEDULES

E-603.2

6
5
4
3
2
1

262816.1 - ENCLOSED SWITCHES & CIRCUIT BREAKERS SCHEDULE												
LABEL	LOCATION		EQUIPMENT SERVED	EQUIPMENT RATINGS					ACCESSORIES			REMARKS
	NUMBER	NAME		VOLTAGE	POLES	AMPERAGE	FUSED	FUSE SIZE	NEMA ENCL	AUX. CONTACTS	SOLID NEUTRAL	
DS-1			CH-1	240 V	3	200 A	Yes	200 A	3R	(1) N.O. / N.C.	No	
DS-2	010	BOILER ROOM	B-1	208V	2	30 A	Yes	20 A	1	(1) N.O. / N.C.	Yes	
DS-3	010	BOILER ROOM	B-2	208V	2	30 A	Yes	20 A	1	(1) N.O. / N.C.	Yes	
DS-4	010	BOILER ROOM	EX. DWH	208V	2	30 A	Yes	20 A	1	(1) N.O. / N.C.	Yes	
DS-5	011	PUMP ROOM	GF-1	208V	2	30 A	Yes	20	1	(1) N.O. / N.C.	Yes	
DS-6			ODU-1	208V	2	30 A	Yes	20 A	3R	(1) N.O. / N.C.	No	
DS-7	006	ELECTRICAL	SS-1	208V	2	30 A	Yes	20 A	1	(1) N.O. / N.C.	No	
DS-8			ODU-2	208V	2	30 A	Yes	20 A	3R	(1) N.O. / N.C.	No	
DS-9	001	CORRIDOR	SS-2	208V	2	30 A	Yes	20 A	1	(1) N.O. / N.C.	No	

262913/262923.1 - ENCLOSED & VARIABLE-FREQUENCY MOTOR CONTROLLERS SCHEDULE														
LABEL	LOCATION		EQUIPMENT SERVED	EQUIPMENT RATINGS					STARTER		DISCONNECT SWITCH		REMOTE CAPACITOR	REMARKS
	NUMBER	NAME		VOLTAGE	PHASE	HP	FLA	NEMA ENCL	TYPE	NEMA SIZE	TYPE	FUSE SIZE		
MS-1			AHU-1 SF	208 V	3	10	32.2 A	1	VFD	-	-	-	-	FURNISHED BY DIVISION 23 CONTRACTOR, INSTALLED BY DIVISION 26 CONTRACTOR.
MS-2	011	PUMP ROOM	CHWP-1	208 V	3	5	17.5 A	-	VFD	-	-	-	-	FURNISHED BY DIVISION 23 CONTRACTOR, INSTALLED BY DIVISION 26 CONTRACTOR.
MS-3	011	PUMP ROOM	CHWP-2	208 V	3	5	17.5 A	-	VFD	-	-	-	-	FURNISHED BY DIVISION 23 CONTRACTOR, INSTALLED BY DIVISION 26 CONTRACTOR.
MS-4	010	BOILER ROOM	HHWP-1	208 V	3	5	17.5 A	-	VFD	-	-	-	-	FURNISHED BY DIVISION 23 CONTRACTOR, INSTALLED BY DIVISION 26 CONTRACTOR.
MS-5	010	BOILER ROOM	HHWP-1	208 V	3	5	17.5 A	-	VFD	-	-	-	-	FURNISHED BY DIVISION 23 CONTRACTOR, INSTALLED BY DIVISION 26 CONTRACTOR.
MS-6			CP-1	120 V	1	1/2	9.8 A	1	MSS	-	-	-	-	FRACTIONAL HORSEPOWER RATED MANURAL TOGGLE SWITCH WITH THERMAL OVERLOADS.
MS-7	010	BOILER ROOM	HWCP-1	120 V	1	1/12	1.6 A	1	MSS	-	-	-	-	FRACTIONAL HORSEPOWER RATED MANURAL TOGGLE SWITCH WITH THERMAL OVERLOADS.
MS-8	010	BOILER ROOM	EF-5	120 V	1	1/4	0.7 A	1	MSS	-	-	-	-	FRACTIONAL HORSEPOWER RATED MANURAL TOGGLE SWITCH WITH THERMAL OVERLOADS.
MS-9			EF-2	120 V	1	1/12	1.6 A	1	MSS	-	-	-	-	FRACTIONAL HORSEPOWER RATED MANURAL TOGGLE SWITCH WITH THERMAL OVERLOADS.
MS-10			EF-3	120 V	1	1/12	1.6 A	1	MSS	-	-	-	-	FRACTIONAL HORSEPOWER RATED MANURAL TOGGLE SWITCH WITH THERMAL OVERLOADS.

262719.1 - MULTI-OUTLET ASSEMBLIES									
LABEL	DESCRIPTION	ELECTRICAL REQUIREMENTS			TELECOM REQUIREMENTS			REMARKS	
		P	N	G	POWER	DATA	AV		
FB1	6-GANG FLOOR BOX.	1	1	1	(2) DUPLEX RECEPTACLES	(1) 2-PORT DATA OUTLET	REFER TO EL101 AND THEATER RISER.		



SCHMIDT ASSOCIATES
415 Massachusetts Avenue
Indianapolis, IN 46204
www.schmidt-arch.com

Project No. 2023-084.RMO
Project Date 12.01.2023
Produced EAG

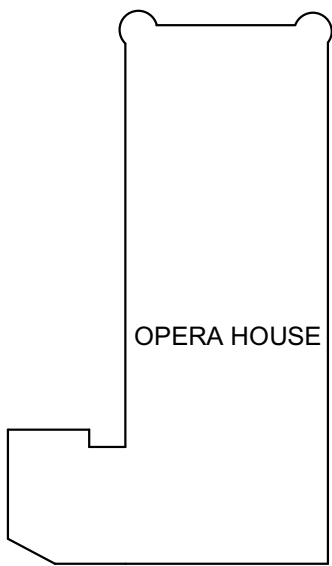


Sarah K. Hempstead

These Drawings and Specifications, and all copies thereof are and shall remain the property and copyright of the Architect. They shall be used only with respect to this Project and are not to be used on any other Project or Work without prior written permission from the Architect.

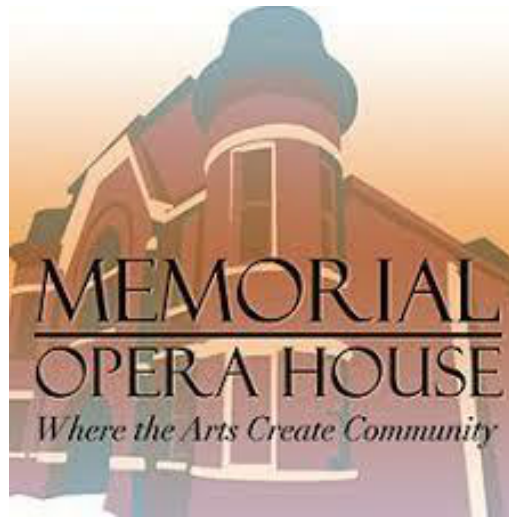
#	Revision	Date
A1	Addendum #1	12.15.2023

104 Indiana Ave,
Valparaiso, IN 46383



KEY PLAN

PORTER COUNTY BOARD OF COMMISSIONERS



MEMORIAL OPERA HOUSE - MAIN PACKAGE - MAIN PACKAGE

EQUIPMENT SCHEDULES

E-604.2

6
5
4
3
2
1

NEW BRANCH PANELBOARD SCHEDULE														
DESIGNATION: LPB					VOLTS: 208Y/120 V					MAINS RATING: 225 A				
LOCATION: Space 122					PHASES: 3					MAINS TYPE: MCB				
MOUNTING: SURFACE					WIRES: 4					MCB RATING: 100 A				
SUPPLY FROM: MDP					AIC RATING: 10,000 A					MCB OPTIONS:				
O	CKT NO.	CIRCUIT ROOM #	CIRCUIT TYPE	TRIP	P	A	B	C	P	TRIP	CIRCUIT TYPE	CIRCUIT ROOM #	CKT NO.	O
--	1	EXISTING	20 A	1	0.00	0.00			1	20 A	EXISTING		2	--
--	3	EXISTING	20 A	1			0.00	0.00		1	20 A	EXISTING	4	--
--	5	EXISTING	20 A	1				0.00	0.00	1	20 A	EXISTING	6	--
--	7	EXISTING	20 A	1	0.00	0.00				1	20 A	EXISTING	8	--
--	9	EXISTING	20 A	1			0.00	0.00		1	20 A	EXISTING	10	--
--	11	EXISTING	20 A	1				0.00	0.00	1	20 A	EXISTING	12	--
--	13	EXISTING	20 A	1	0.00	0.00				1	20 A	EXISTING	14	--
--	15	EXISTING	20 A	1			0.00	0.00		1	20 A	EXISTING	16	--
--	17	EXISTING	20 A	1				0.00	0.00	1	20 A	EXISTING	18	--
--	19	STAGE FLOOR BOX	RECEPT	20 A	1	0.18	0.36			1	20 A	RECEPT	20	--
--	21	STAGE FLOOR BOX	RECEPT	20 A	1		0.18	0.36		1	20 A	RECEPT	22	--
--	23	STAGE FLOOR BOX	RECEPT	20 A	1			0.18	0.36	1	20 A	RECEPT	24	--
--	25	STAGE FLOOR BOX	RECEPT	20 A	1	0.18	0.36			1	20 A	RECEPT	26	--
--	27	STAGE LEFT AUDIO	RECEPT	20 A	1		0.36	0.36		1	20 A	RECEPT	28	--
--	29	STAGE LEFT AUDIO	RECEPT	20 A	1			0.36	0.36	1	20 A	RECEPT	30	--
--	31	STAGE LEFT AUDIO	RECEPT	20 A	1	0.36	0.36			1	20 A	RECEPT	32	--
--	33	STAGE LEFT AUDIO	RECEPT	20 A	1		0.36	0.36		1	20 A	RECEPT	34	--
--	35	STAGE LEFT	RECEPT	20 A	1			0.18	0.36	1	20 A	RECEPT	36	--
--	37	STAGE LEFT	RECEPT	20 A	1	0.18	0.36			1	20 A	RECEPT	38	--
--	39	STAGE SW CORNER	RECEPT	20 A	1		0.36	0.36		1	20 A	RECEPT	40	--
--	41	STAGE SW CORNER	RECEPT	20 A	1			0.36	0.36	1	20 A	RECEPT	42	--
--	43	STAGE SW CORNER	RECEPT	20 A	1	0.36	0.36			1	20 A	RECEPT	44	--
--	45	STAGE SW CORNER	RECEPT	20 A	1		0.36	0.36		1	20 A	RECEPT	46	--
--	47	EXTERIOR EAST, LOBBY EXITS	LIGHTING	20 A	1			0.01	0.18	1	20 A	RECEPT	48	--
--	49	HOUSE / STAGE EXITS, BATT.	LIGHTING	20 A	1	0.04	0.18			1	20 A	RECEPT	50	--
--	51	SPARE	20 A	1			0.00	0.18		1	20 A	RECEPT	52	--
--	53	SPARE	20 A	1				0.00	0.18	1	20 A	RECEPT	54	--
TOTAL LOAD:					3.28 kVA	3.60 kVA	2.89 kVA							
TOTAL AMPS:					28 A	31 A	24 A							
TOTAL CONNECTED LOAD: 9.77 kVA										9.78 kVA				
TOTAL DEMAND LOAD:										27 A				
TOTAL CONNECTED AMPS: 31 A										TOTAL DEMAND AMPS:				
PANELBOARD & CIRCUIT BREAKER OPTIONS					LOAD CLASSIFICATION		CONNECTED LOAD (VA)		DEMAND FACTOR		ESTIMATE DEMAND (VA)			
C CONTACTOR CONTROLLED					Receptacle - General		9720 VA		100.00%		9720 VA			
G GFCI PROTECTED					Lighting - Interior		50 VA		125.00%		63 VA			
P HANDLE LOCKING DEVICE														
S SHUNT TRIP														
X 80% RATED MAIN CIRCUIT BREAKER WITH LSI														
Y 100% RATED MAIN CIRCUIT BREAKER WITH LSI														
Z 100% RATED MAIN CIRCUIT BREAKER WITH LSI														
FEED THROUGH LUGS (FTL)														
SUB FEED LUGS (SFL)														
NOTES:														

NEW BRANCH PANELBOARD SCHEDULE																	
DESIGNATION: LPC						VOLTS: 208Y/120 V					MAINS RATING: 100 A						
LOCATION: BOILER ROOM 010						PHASES: 3					MAINS TYPE: MLO						
MOUNTING: SURFACE						WIRES: 4											
SUPPLY FROM: MDP						AIC RATING: 10,000 A											
O	CKT NO.	CIRCUIT ROOM #	CIRCUIT TYPE	TRIP	P	A	B	C	P	TRIP	CIRCUIT TYPE	CIRCUIT ROOM #	CKT NO.	O			
S	1	B-2	MOTOR	20 A	1	1.56	0.09			1	20 A	LIGHTING	FLAGPOLE LTG, WALKWAY LTG	2			
S	3	B-1	MOTOR	20 A	1		1.56	0.52		1	20 A	LIGHTING	SITE POLES, BOILER 010, PLUMB	4			
S	5	GP-1	POWER	20 A	1			0.12	0.55	1	20 A	LIGHTING	BASSEMENT LIGHTING	6			
--	7	SPARE		20 A	1	0.00	0.00			1	20 A		EXISTING FLAG POLE LIGHT	8	--		
--	9	RECEPTS, AHU 1 AND CU 1		20 A	1		0.00	0.86		1	20 A	RECEPT	ROOF RECEPT, AHU-2 RECEPTS	10	--		
--	11	EXISTING		20 A	1			0.00	1.18	1	20 A	MOTOR	CP-1	12	--		
--	13	TCPS	POWER	20 A	1	0.72	0.19			1	20 A	MOTOR	HHWP-1	14	--		
--	15	EXISTING OUTSIDE OUTLET		20 A	1		0.00	0.38		1	20 A	MOTOR	IF-4	16	--		
--	17	EXTERIOR SIGNAGE LTG	LIGHTING	20 A	1			0.50	0.96	1	20 A	HEAT	EX. DWH	18	--		
--	19	HHWP-1	MOTOR	25 A	3	2.10	1.16			1	20 A	MOTOR	WWP-1	20	--		
--	21	--	--	--	--	--	2.10	0.50		1	20 A	RECEPT	AHU RECEPT	22	--		
--	23	--	--	--	--	--		2.10	0.18	1	20 A	EPO	EMERGENCY BOILER SHUT-OFF	24	--		
--	25	HHWP-2	MOTOR	25 A	3	0.00	0.18			1	20 A	RECEPT	CHILLER, EXTERIOR	26	--		
--	27	--	--	--	--	--	0.00	0.00		1	20 A		SPARE	28	--		
--	29	--	--	--	--	--		0.00	0.00	1	20 A		SPARE	30	--		
--	31	CHWP-1	MOTOR	25 A	3	2.10	0.00			1	20 A		SPARE	32	--		
--	33	--	--	--	--	--	2.10	0.00		1	20 A		SPARE	34	--		
--	35	--	--	--	--	--		2.10	0.00	1	20 A		SPARE	36	--		
--	37	CHWP-2	MOTOR	25 A	3	0.00	0.00			1	20 A		SPARE	38	--		
--	39	--	--	--	--	--	0.00	0.00		1	20 A		SPARE	40	--		
--	41	--	--	--	--	--		0.00	0.00	1	20 A		SPARE	42	--		
TOTAL LOAD:						8.10 kVA	8.02 kVA	7.69 kVA									
TOTAL AMPS:						68 A	67 A	64 A									
TOTAL CONNECTED LOAD:						23.81 kVA									23.83 kVA	TOTAL DEMAND LOAD:	
TOTAL CONNECTED AMPS:						88 A									66 A	TOTAL DEMAND AMPS:	
PANELBOARD & CIRCUIT BREAKER OPTIONS ("O" COLUMN / MCB OPTIONS ABBREVIATIONS)						LOAD CLASSIFICATION		CONNECTED LOAD (VA)		DEMAND FACTOR		ESTIMATE DEMAND (VA)					
C CONTACTOR CONTROLLED						Receptacle - General		2260 VA		100.00%		2260 VA					
G GFCI PROTECTED						Lighting - Interior		1062 VA		125.00%		1328 VA					
P HANDLE LOCKING DEVICE						Lighting - Exterior		50 VA		100.00%		50 VA					
S SHUNT TRIP						Mechanical - Motor		18757 VA		100.00%		18757 VA					
X 80% RATED MAIN CIRCUIT BREAKER WITH LSI						Mechanical - Heating		960 VA		75.00%		720 VA					
Y 100% RATED MAIN CIRCUIT BREAKER WITH LSI						Power - Continuous		180 VA		100.00%		180 VA					
Z 100% RATED MAIN CIRCUIT BREAKER WITH LSI						Spare		500 VA		100.00%		500 VA					
FEED THROUGH LUGS (FTL)																	
SUB FEED LUGS (SFL)																	
NOTES:																	

EXISTING BRANCH PANELBOARD SCHEDULE															
DESIGNATION: LPD					VOLTS: 120/208 V					MAINS RATING: 200 A					
LOCATION: ELECTRICAL 006					PHASES: 1					MAINS TYPE: MLO					
MOUNTING: SURFACE					WIRES: 3										
SUPPLY FROM: MDP					AIC RATING:										
O	CKT NO	CIRCUIT ROOM #	CIRCUIT TYPE	TRIP	P	A		B		P	TRIP	CIRCUIT TYPE	CIRCUIT ROOM #	CKT NO	O
--	1	EX. WORK LIGHT	20 A	1	0.00	0.00				1	20 A	EX. CIRCUIT		2	--
--	3	EX. WORK LIGHT	20 A	1			0.00	0.00	1	20 A		EX. CIRCUIT		4	--
--	5	EX CIRCUIT	20 A	1	0.00	0.00				1	20 A	EX. CIRCUIT		6	--
--	7	EX CIRCUIT	20 A	1			0.00	0.00	2	20 A		EX. CIRCUIT		8	--
--	9	EX CIRCUIT	20 A	1	0.00	2.25				2	30 A	DRYER	STORAGE 006	10	--
--	11	EX CIRCUIT	20 A	1			0.00	2.25	--	--	--	--	--	12	--
--	13	SPARE - NOTE 1	20 A	1	0.00	0.25			1	20 A	LC-1	ELECTRICAL 006 - NOTE 1		14	--
--	15	SPARE - NOTE 1	20 A	1			0.00	0.16	1	20 A	LIGHTING	EXTERIOR - NOTE 1		16	--
--	17	ELECTRICAL 006 - NOTE 1	20 A	1	0.36	1.56			2	20 A	ODJUS2	006. EXTERIOR - NOTE 1		18	--
--	19	STORAGE 105 - NOTE 1	NETWORK FOL2	20 A	1		1.28	1.56	--	--	--	--	--	20	--
--	21	EXTERIOR - NOTE 1	RECEPT	20 A	1	0.18	1.56		2	20 A	ODJUS2	001. EXTERIOR - NOTE 1		22	--
--	23	ELECTRICAL 006 - NOTE 1	MI-1	20 A	1		0.29	1.56	--	--	--	--	--	24	--
TOTAL LOAD:						6.16 kVA		7.10 kVA							
TOTAL AMPS:						59 A		67 A							
TOTAL CONNECTED LOAD: 13.28 kVA										13.29 kVA TOTAL DEMAND LOAD:					
TOTAL CONNECTED AMPS: 67 A										64 A TOTAL DEMAND AMPS:					
PANELBOARD & CIRCUIT BREAKER OPTIONS ("O" COLUMN / MCB OPTIONS ABBREVIATIONS)				LOAD CLASSIFICATION		CONNECTED LOAD (VA)		DEMAND FACTOR		ESTIMATE DEMAND (VA)					
C	CONTACTOR CONTROLLED			Receptacle - General		5040 VA		100.00%		5040 VA					
G	GFCI PROTECTED			Lighting - Exterior		338 VA		100.00%		338 VA					
P	HANDLE LOCKING DEVICE			Mechanical - Motor		7524 VA		100.00%		7524 VA					
S	SHUNT TRIP			LE		250 VA		100.00%		250 VA					
X	80% RATED MAIN CIRCUIT BREAKER WITH LSI			LI		109 VA		125.00%		137 VA					
Y	100% RATED MAIN CIRCUIT BREAKER WITH LSI														
Z	100% RATED MAIN CIRCUIT BREAKER WITH LSI														
FEED THROUGH LUGS (FTL)															
SUB FEED LUGS (SFL)															
NOTES: EXISTING PANELBOARD AND CIRCUIT BREAKERS TO REMAIN UNO 1. PROVIDE NEW CIRCUIT BREAKER AND CONNECT TO LOAD INDICATED.															