

ADDENDUM NO. 2

January 15, 2024

CHESTERTON HIGH SCHOOL STADIUM IMPROVEMENTS
Chesterton, IN 46304

TO: ALL BIDDERS OF RECORD

This Addendum forms a part of and modifies the Bidding Requirements, Contract Forms, Contract Conditions, the Specifications, and the Drawings dated November 30, 2023 by Gibraltar Design, Inc. Acknowledge receipt of the Addendum in the space provided on the Bid Form. Failure to do so may subject the Bidder to disqualification.

This Addendum consists of Pages ADD 2-1 and attached Addendum No. 2 from Gibraltar Design, Inc. dated January 11, 2024 and consisting of 2 pages and 5 drawings.

ADDENDUM TWO

Addendum Two (AD.02) to the drawings and specifications prepared by Gibraltar Design for **Duneland Chesterton HS Stadium Improvements** for Duneland School Corporation, Chesterton, Indiana.

All Contractors bidding on this project shall read all of the items covered below and shall comply with all of the requirements as set forth, including any necessary refinements or additions generated by this Addendum and required by the intent of the original contract documents. All Contractors shall acknowledge on their bid form that they have received this Addendum and Addendum One and include the appropriate content of same within their bid proposal.

SPECIFICATIONS

1. Specification Section 11 68 33 Athletic Field Equipment

A. Revise Paragraph 2.2 Football Goals to read as follows:

2.2 Football Goals

- A. Offset Single Support Post Football Goals: As manufactured by AALCO Manufacturing Co., St. Louis, Missouri.
 - 1. Pro-style bent post of 6 inch standard, galvanized steel pipe (6 5/8 inch OD) projects bar and uprights 6 feet out, padded.
 - a. Pad Color: Owner to select from manufacturers standard colors.
 - 2. Crossbar of 3 1/2 inch OD galvanized steel pipe.
 - 3. Uprights of 2 1/2 inch OD aluminum pipe. Style OY-6-20.

2. Specification Section 32 18 12 Synthetic Turf System

A. Revise Paragraph 2.2.D. to read as follows:

"D. Cushion Panel: Provide expanded polypropylene sheets, 0.9 inches thick, Powerbase by Brock, or approved equal. To be installed per details of inlaid boxes in turf, and As indicated and required for Alternate #4 requirement under the entire field conditions where the Natural Coconut Infill is utilized in lieu of the rubber infill material."

DRAWINGS

3. Sheet C-1.1

- A. Refer to revised full size drawing included in this Addendum for the following revisions.
 - 1. Demolition notes 2 and 11 are revised.
 - 2. Both Football Goals noted 11 are to be removed. See note 11.

4. Sheet C-2.1

- A. Refer to revised full size drawing included in this Addendum for the following revisions.



1. Plan notes 1, 12, and 17 are revised.
2. Plan note 18 is removed, Note 18 on the North side is revised to Note 25.
3. Plan Note 35 (New Football Goal) is added.
4. Clarification of 16-ft sliding gate with arrow added.
5. Added Plan note 36 to supply power from the existing sports building at softball to the new hand hole box at the 50 yard line of the visitor side of football.

5. Sheet C-3.1

- A. Refer to revised full size drawing included in this Addendum for the following revisions.
 1. Deleted info regarding underdrain at Southeast area.

6. Sheet C-5.2

- A. Refer to revised full size drawing included in this Addendum for the following revisions.
 1. Updated Landing Area Detail. Label for Landing Area Detail identified as 3/C-5.2.
 2. Labor for Take-Off Board Detail is identified as 4/C-5.2.
 3. Ornamental Fence Detail added.

7. Sheet A-101

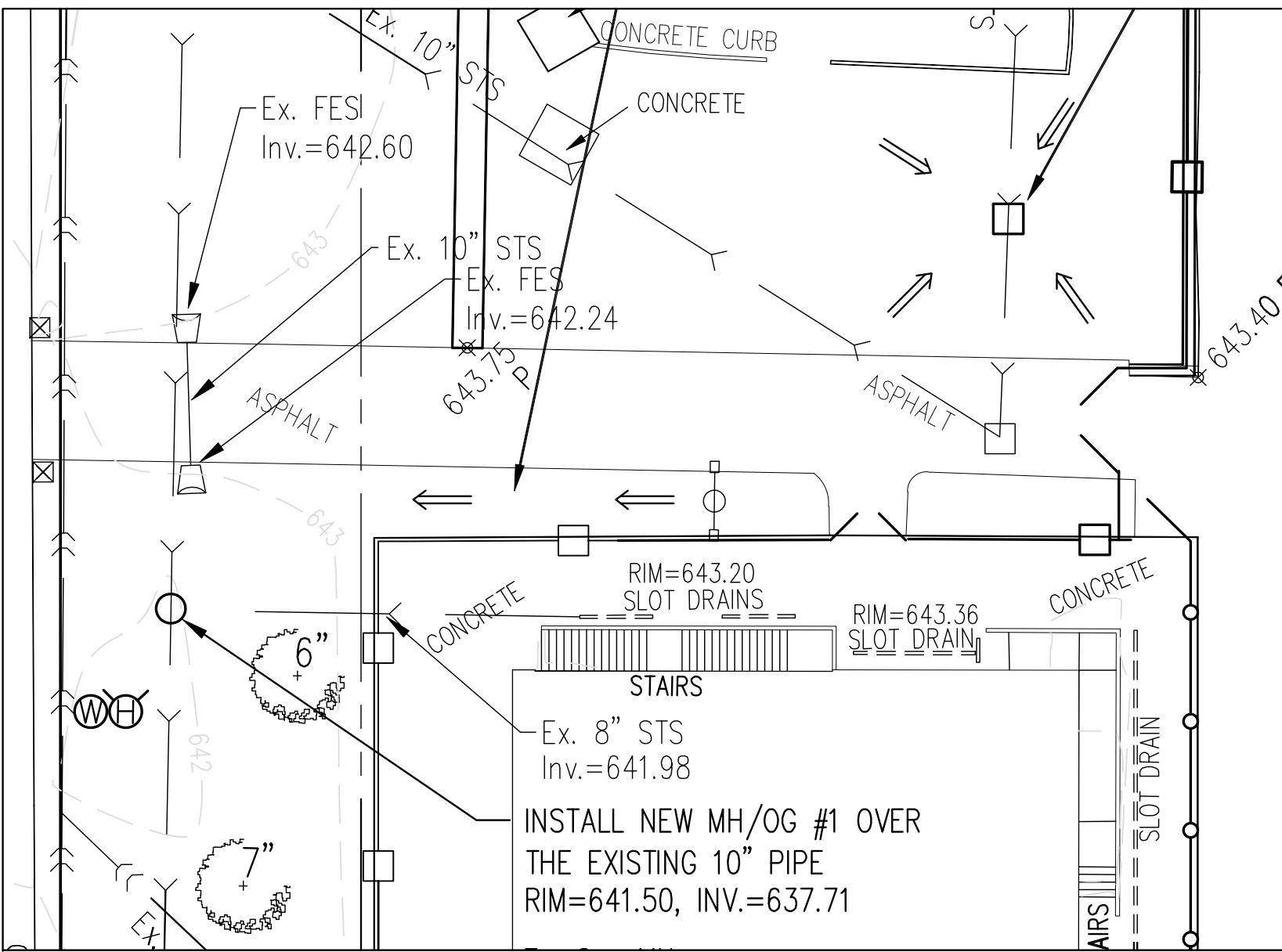
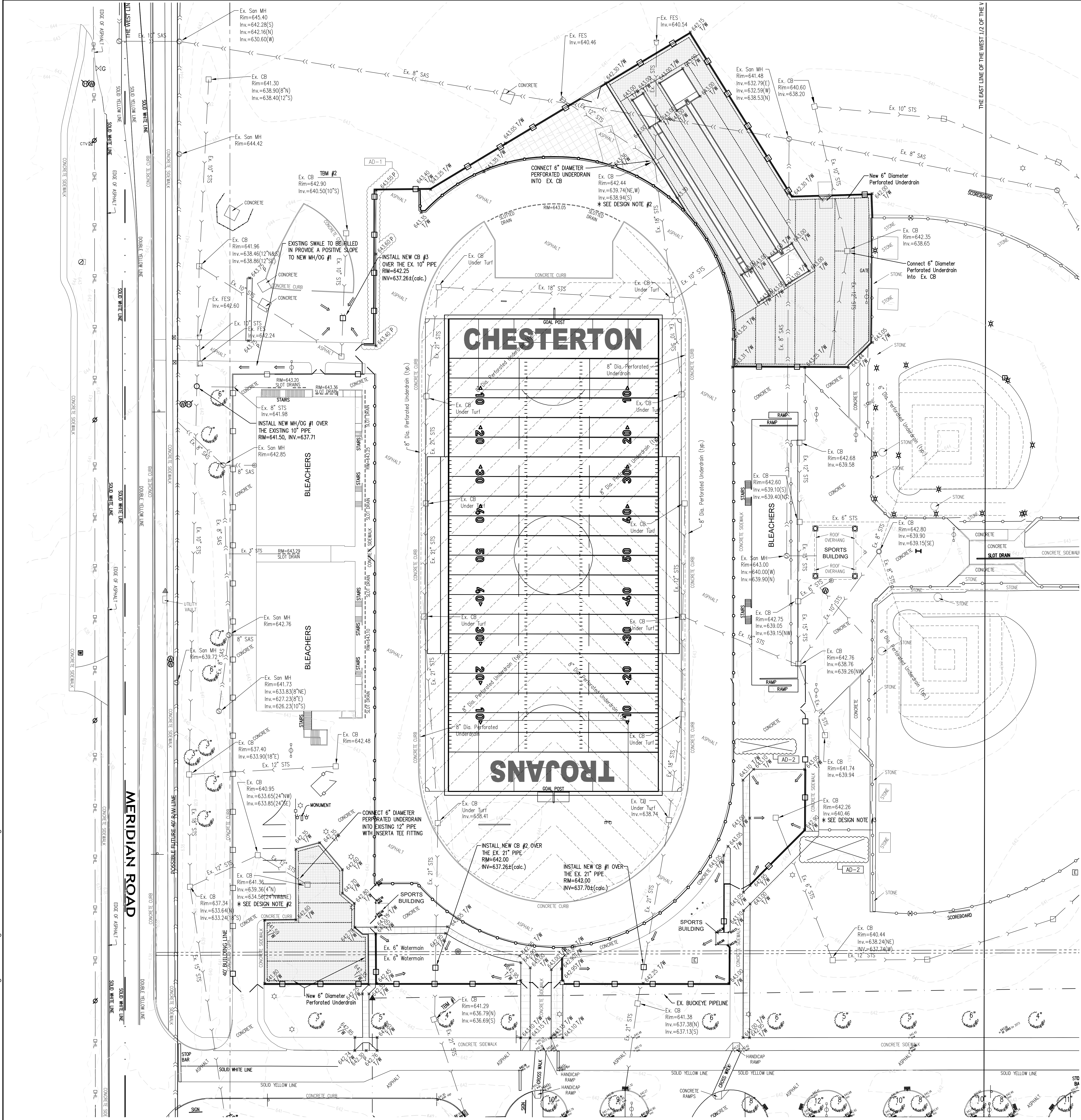
- A. Refer to revised full size drawing included in this Addendum for the following revisions.
 1. Revise callout bubbles as indicated on Stadium Entrance Plan 1/A-101.
 2. Revise Pier Schedule on Stadium Entrance Plan 1/A-101.
 3. Revise Masonry Pier section 3/A-101.
 4. Add Masonry pier Section 5/A-101.

Pages 1 through 2, inclusive, and five (5) Full-Size Drawings, constitute the total makeup of **Addendum Two**.

**GIBRALTAR**

DESIGN

Y:\21-149 Duneland SC - Chesterton HS Football Stadium Improvement\Specs\Addendum 2\AD02.doc



YARD DRAIN
SCALE: 1" = 20'

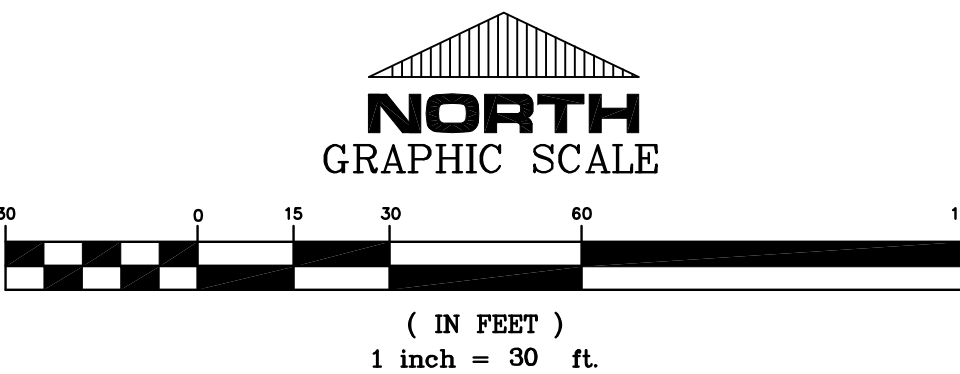
- LEGEND:**
- PROPOSED**
- STORM SEWERS
 - STORM SEWERS
 - - - CONTOURS
 - ← DRAINAGE FLOW
 - * XXXXX PROPOSED ELEVATION
 - * XXXXX EXISTING ELEVATION DESCRIPTION
 - (calc.) CALCULATED ELEVATION BASED ON BEST INFORMATION AVAILABLE
 - * XXXX 1/W NEW ELEVATION AT SIDEWALK CONCRETE OR BACK OF CURB
 - * XXXX P NEW ELEVATION AT PAVEMENT
 - ← DRAINAGE FLOW DIRECTION

GENERAL PLAN NOTES:

- A. SUB-DRAINAGE LAYOUT INDICATED IN NEW ARTIFICIAL TURF AREAS AROUND TRACK IS FOR INFORMATIONAL & INTENT PURPOSES. CONTRACTOR IS RESPONSIBLE FOR ACTUAL DRAINAGE DESIGN AND CONNECTION AS INDICATED ON DRAWING AND PER SPECIFICATION.
- B. THE LOCATION OF THE STORM SEWER AND STRUCTURES BENEATH THE EXISTING ARTIFICIAL TURF IS APPROXIMATE. THE SIZES OF THE STORM SEWERS ARE TAKEN FROM THE SUBGRADE DRAINAGE PLAN DESIGN DRAWINGS PREPARED BY DLZ INDIANA, LLC, DATED JUNE 30, 2011.

DESIGN NOTES:

1. THE CONTRACTOR IS RESPONSIBLE TO VERIFY ALL EXISTING SITE CONDITIONS AND SHALL NOTIFY THE ARCHITECT/ENGINEER IMMEDIATELY OF ANY DISCREPANCIES BETWEEN THE EXISTING CONDITIONS AND ALL PROPOSED IMPROVEMENTS IN THE CONSTRUCTION DRAWINGS.
2. REMOVE EXISTING CASTING AND CAP STRUCTURE BELOW GRADE.
3. THE CONTRACTOR SHALL CLEAN EXISTING STORM PIPING TO ENSURE PROPER DRAINAGE.



PROJECT
CHESTERTON HS
STADIUM
IMPROVEMENTS
DUNELAND SCHOOL CORPORATION
CHESTERTON, INDIANA

GIBRALTAR DESIGN
9102 N. Meridian St., Ste. 300
Indianapolis, IN 46260
Homepage: www.GibraltarDesign.com
Email: info@GibraltarDesign.com
Phone: 317.580.5777 Fax: 317.580.5778

PROJECT
21-149
DATE
12/14/23
COORDINATED BY
DCT
DRAWN BY
EM DCT
CHECKED BY
DCT

COPYRIGHT NOTICE:
THE CONCEPTS, DESIGNS, PLANS, DETAILS, ETC., SHOWN ON THIS DOCUMENT ARE THE PROPERTY OF GIBRALTAR DESIGN AND NOT BE LOANED, REPRODUCED, COPIED, OR USED FOR ANY OTHER PROJECT WITHOUT THE EXPRESS WRITTEN CONSENT OF GIBRALTAR DESIGN. THE OWNER MAY NOT REUSE THESE FOR INFORMATION AND REFERENCE IN CONNECTION ONLY WITH THIS PROJECT.

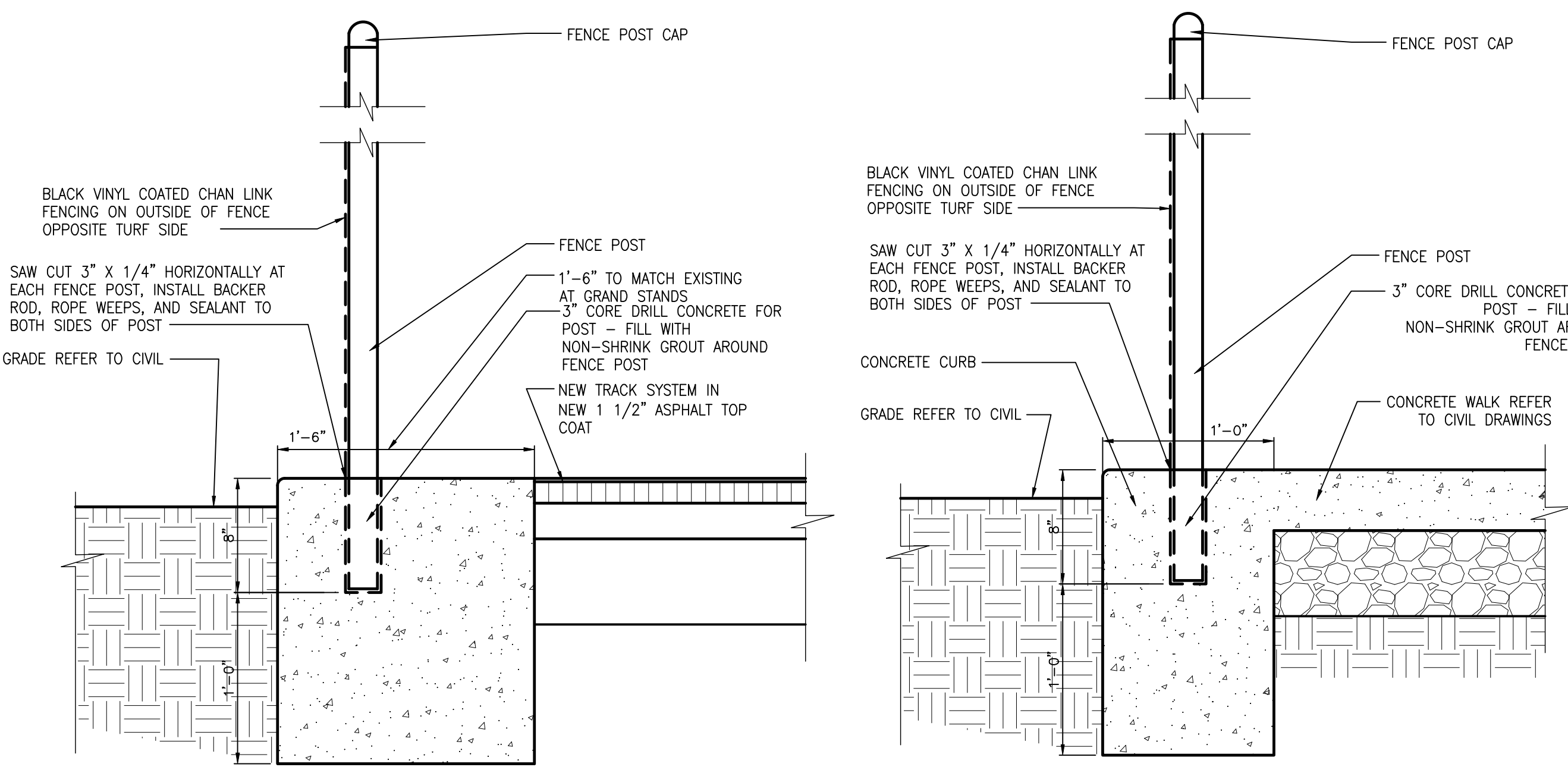
REVISIONS		
MARK	DATE	ISSUED FOR
AD-1	01/05/2024	ADDENDUM NO. 1
AD-2	01/11/2024	ADDENDUM NO. 2

DRAWING
DRAINAGE PLAN

PROJECT
CHESTERTON HS STADIUM
IMPROVEMENTS

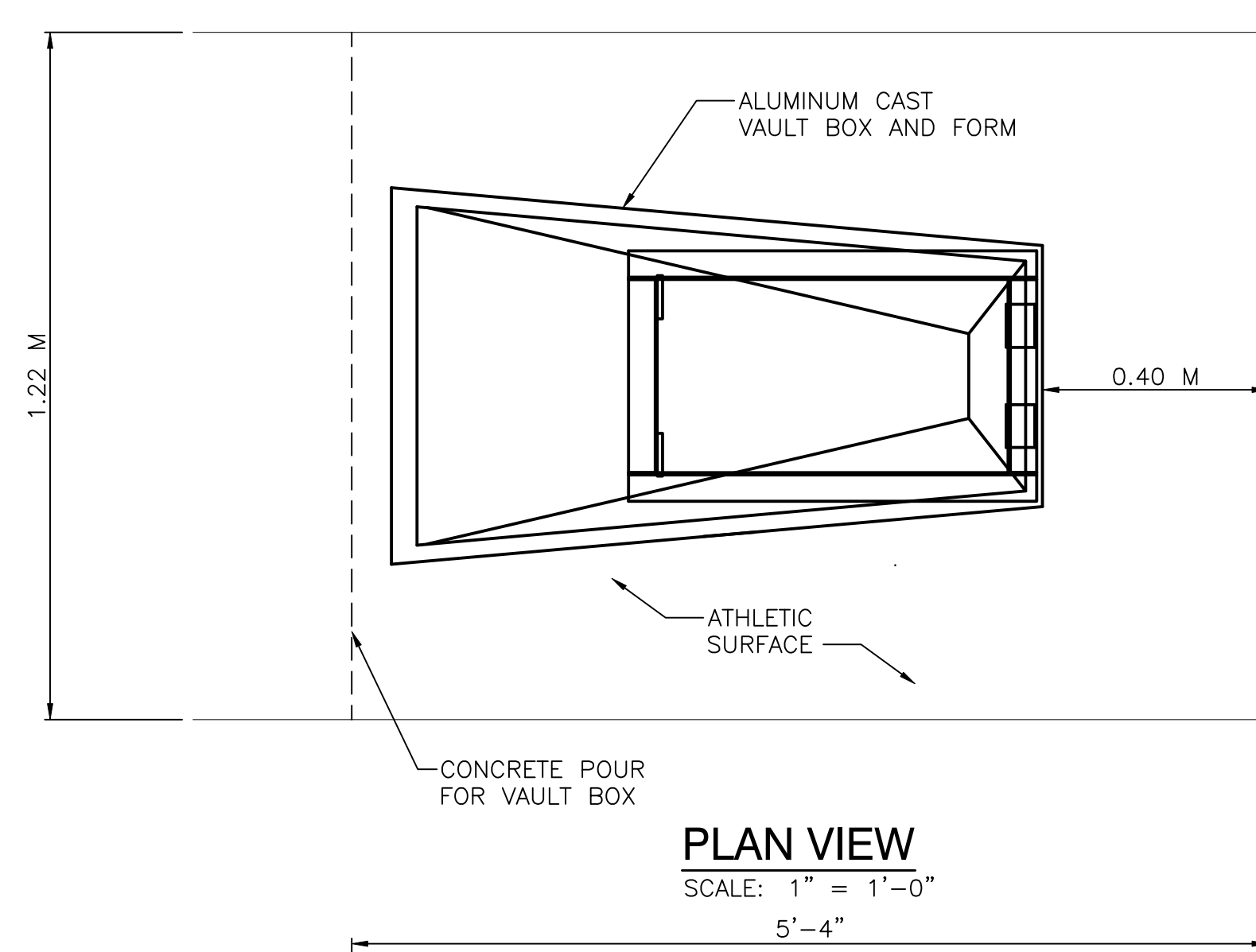
CHESTERTON HS STADIUM
IMPROVEMENTS
C-3.1

Z:\2023-5012 Duneland School - Chesterton High School\dwg\2023-5012 Details.dwg 1/2/2024 3:58:15 PM CST

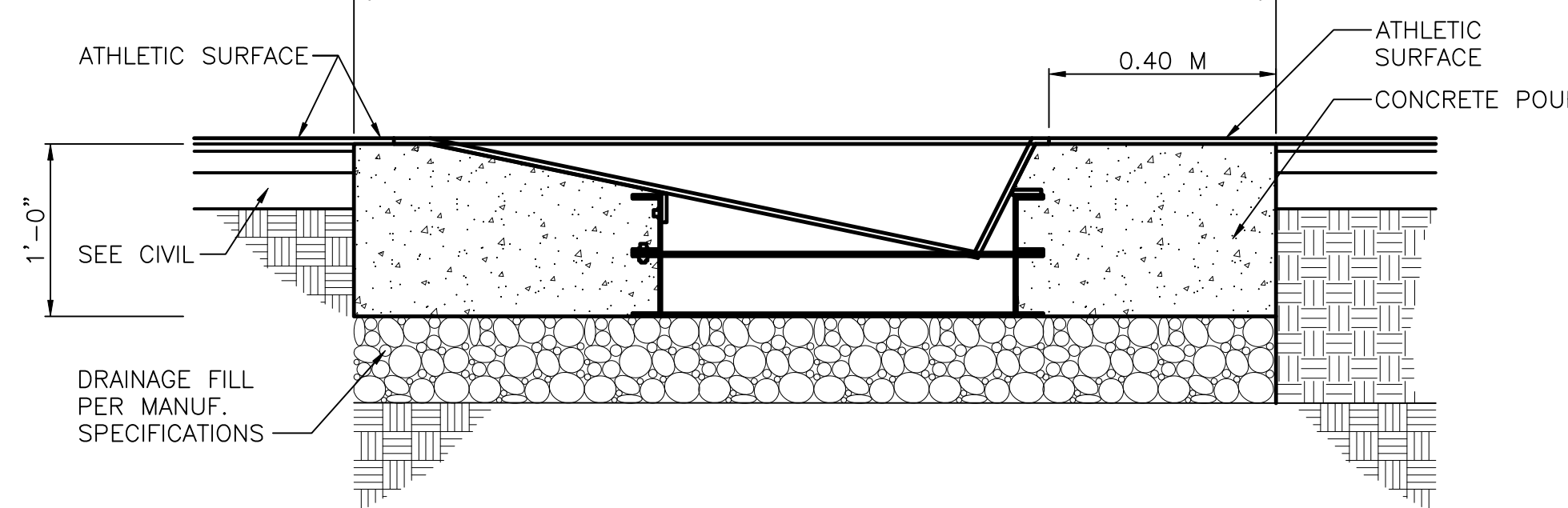


TYPICAL FENCE POST DETAIL AT TRACK
SCALE: NTS

TYPICAL FENCE POST DETAIL AT CONCRETE WALK
SCALE: NTS

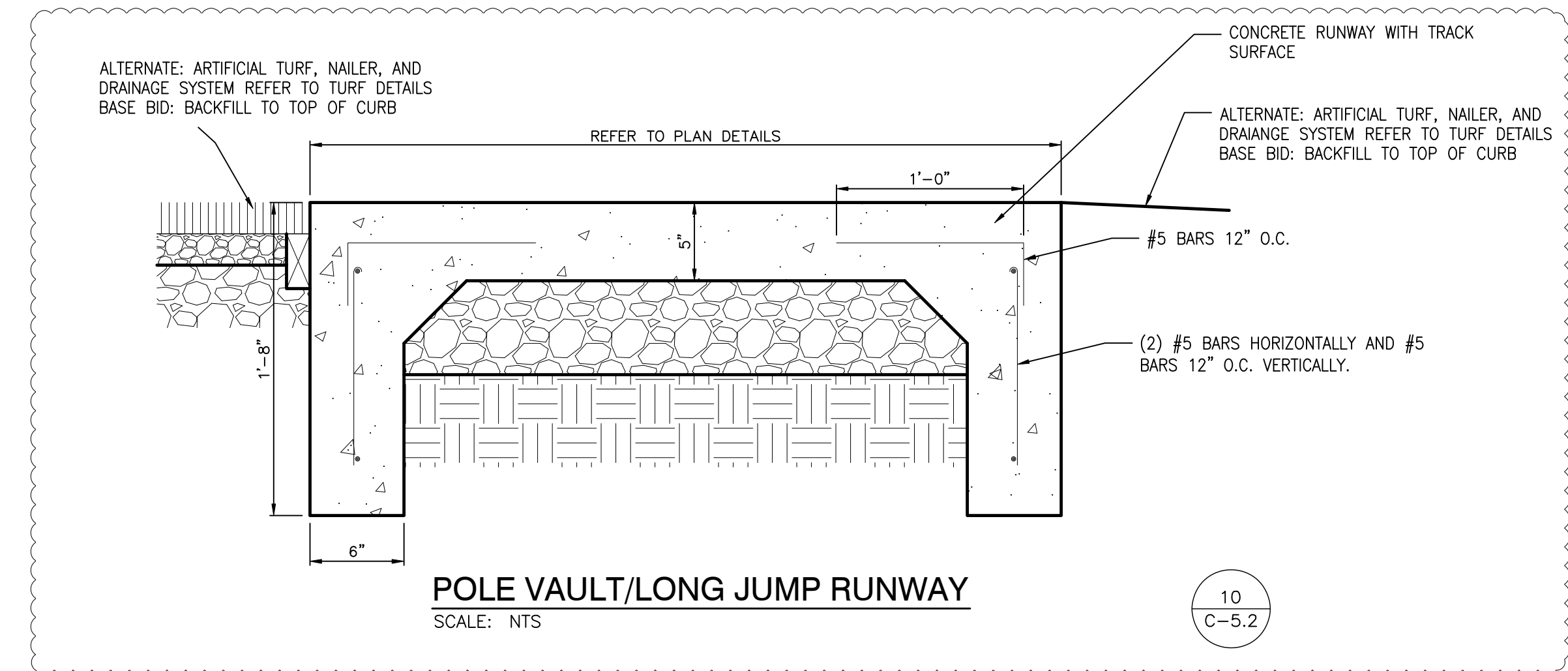


PLAN VIEW
SCALE: 1" = 1'-0"

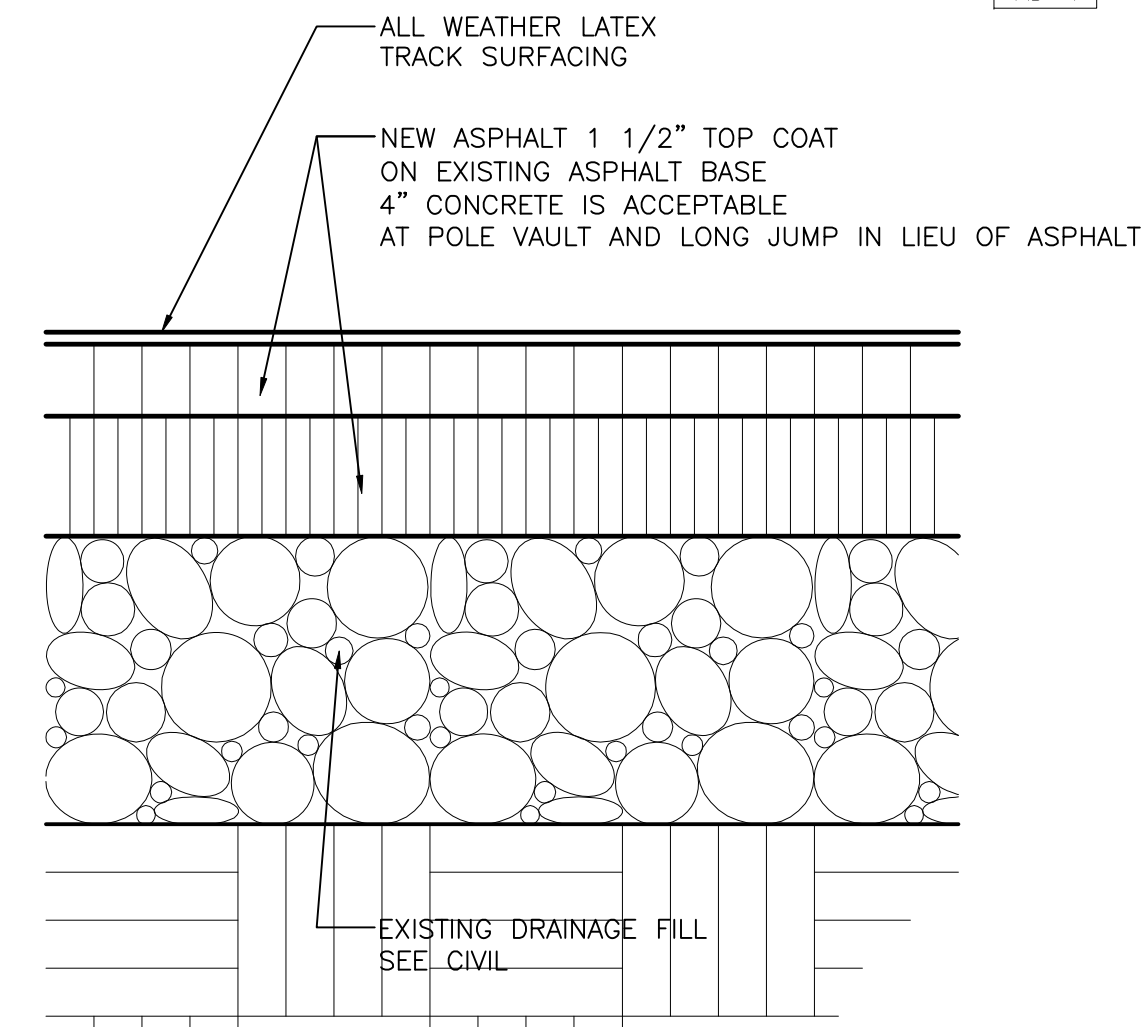


COORDINATE SUB-GRADE DESIGN AND FOUNDATION AND REQUIREMENTS W/ SELECTED MANUFACTURER

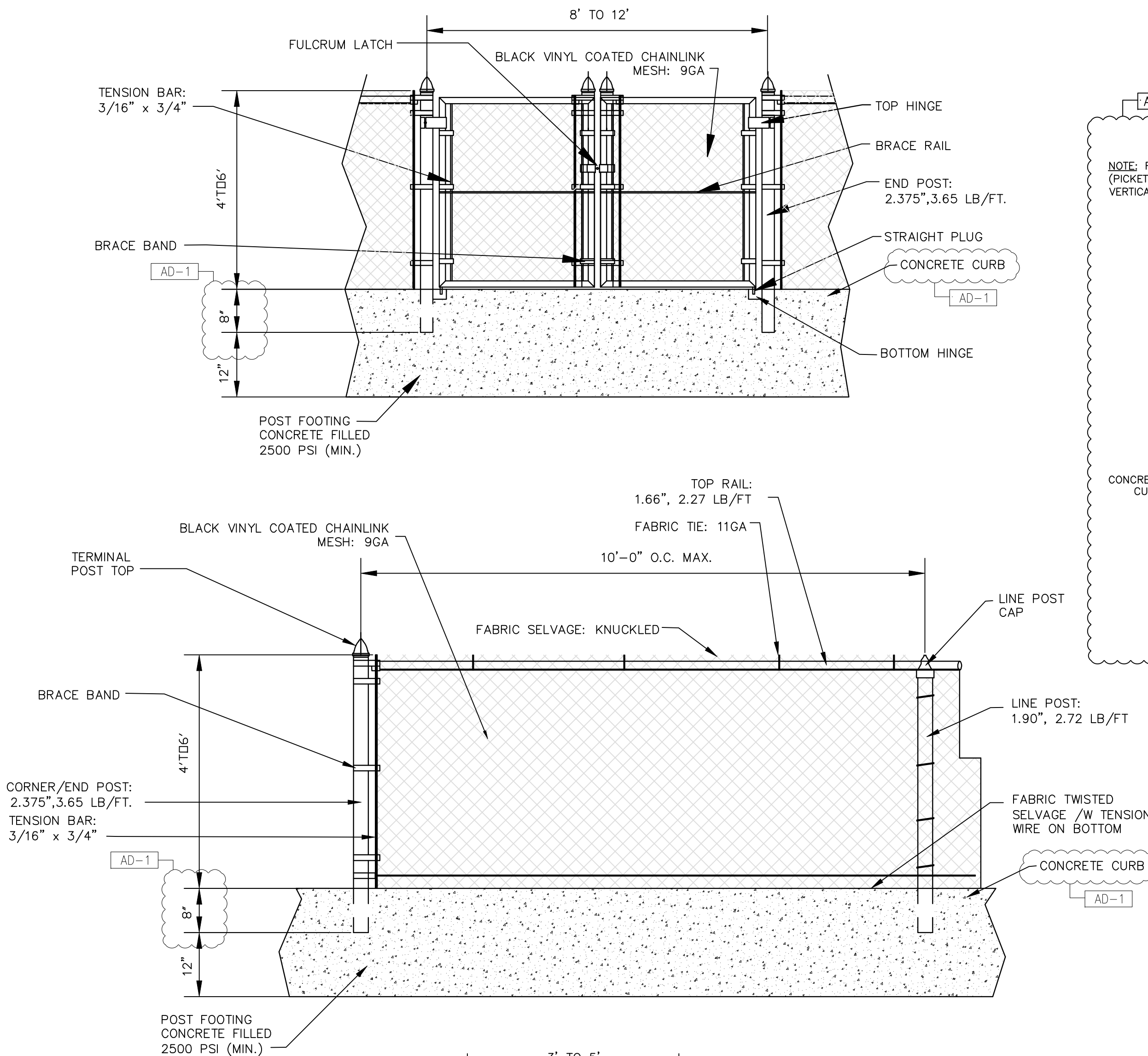
SECTION
SCALE: 1" = 1'-0"



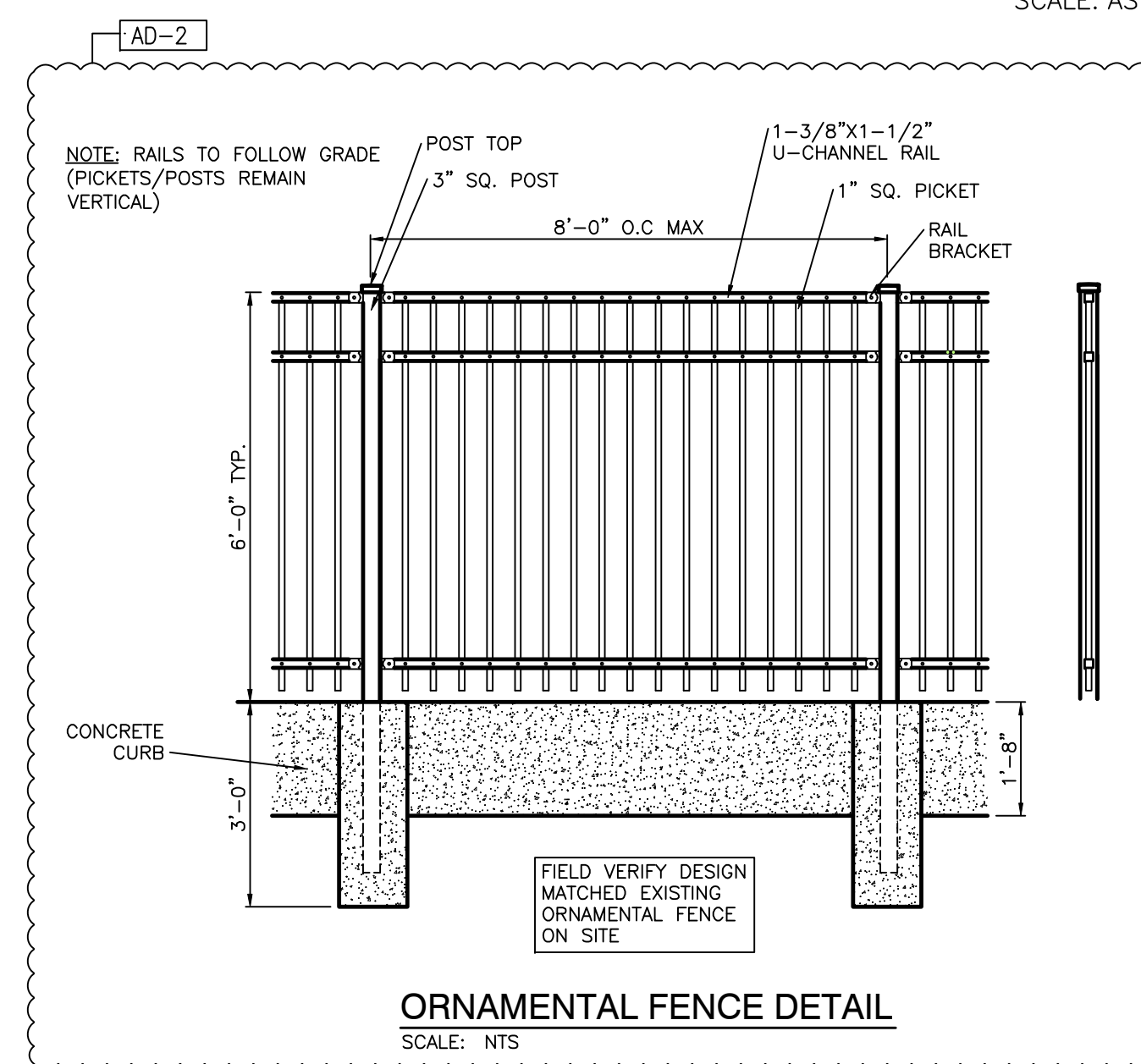
POLE VAULT/LONG JUMP RUNWAY
SCALE: NTS



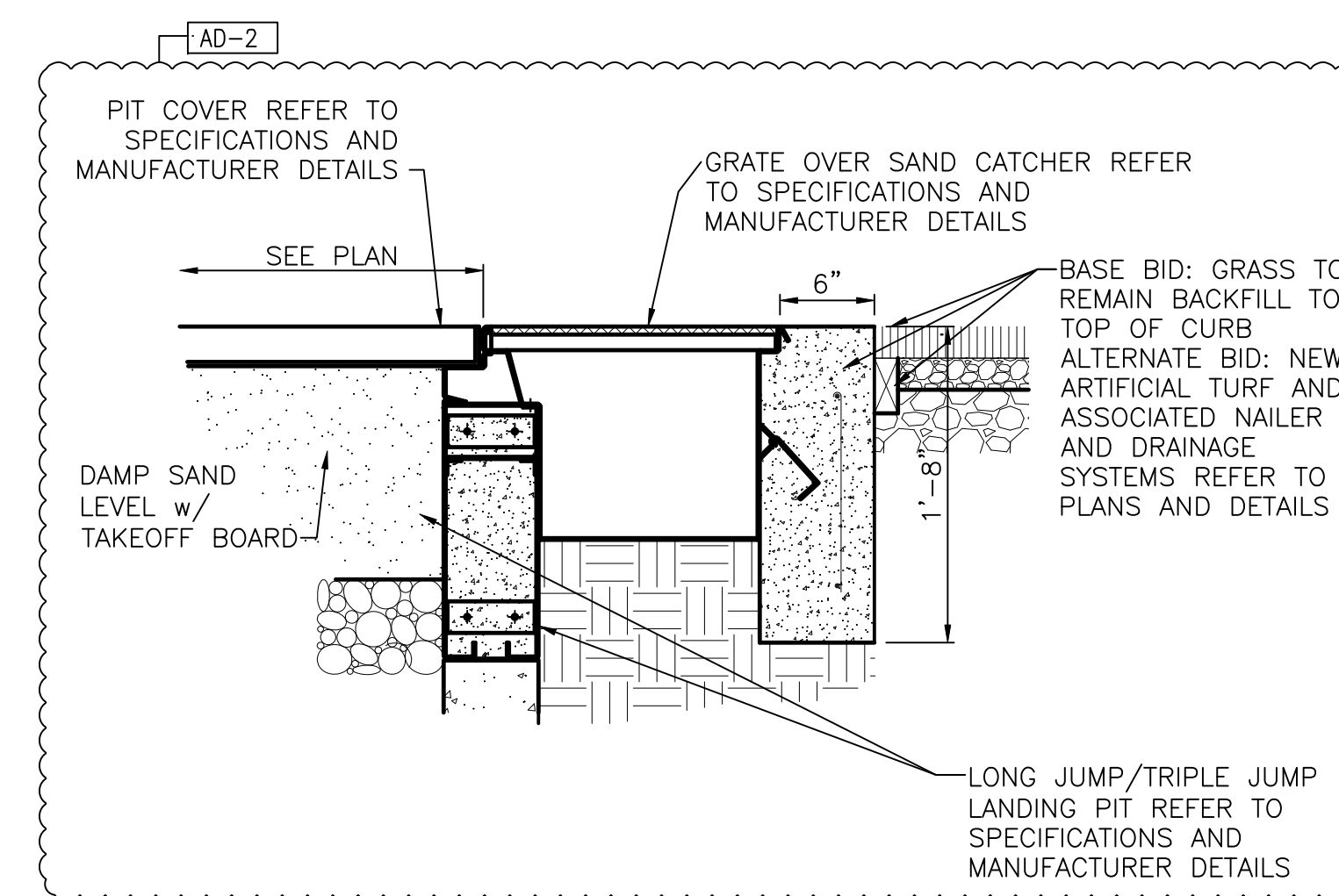
ATHLETIC SURFACE
SCALE: 3" = 1'-0"



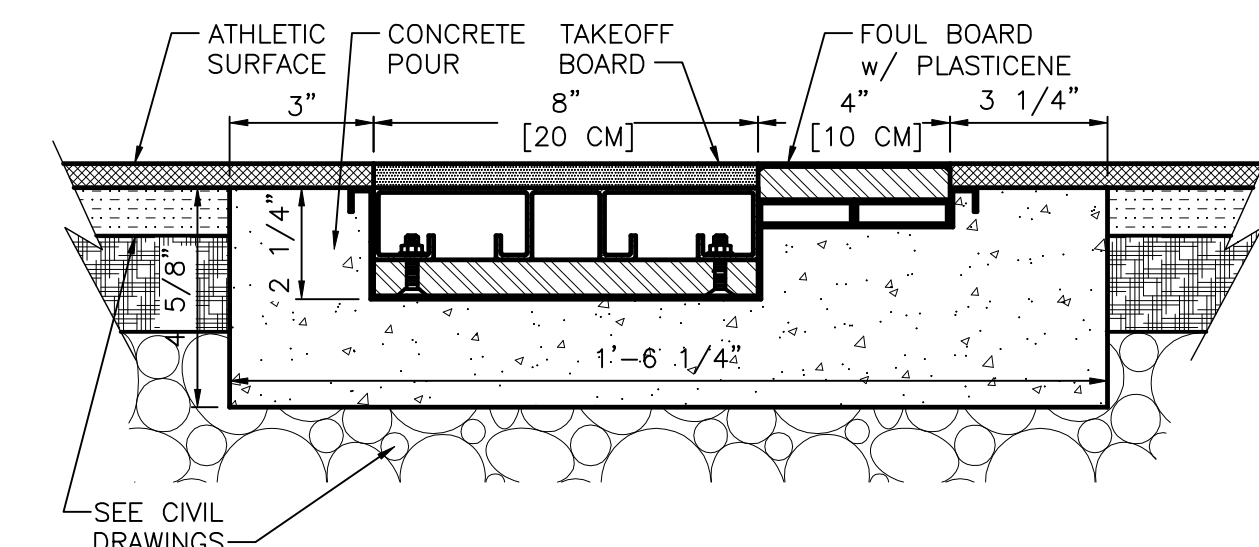
FENCE/GATE DETAIL
SCALE: NTS



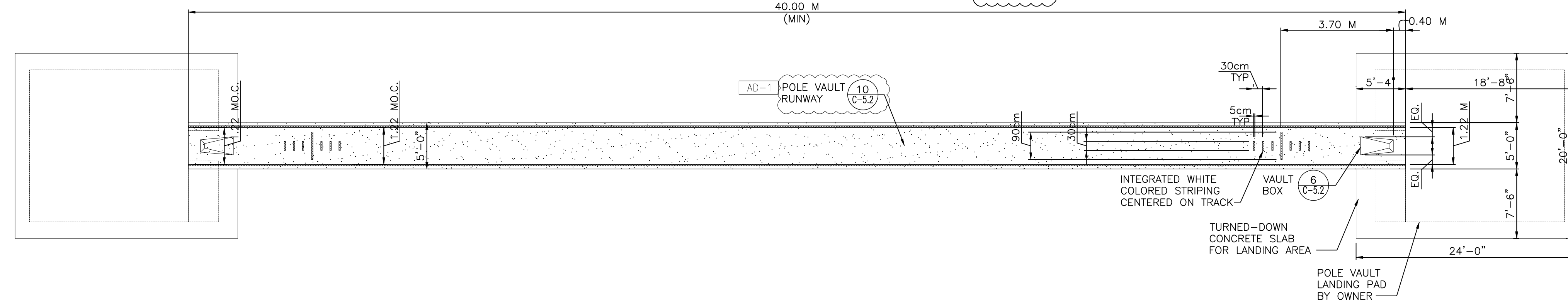
ORNAMENTAL FENCE DETAIL
SCALE: NTS



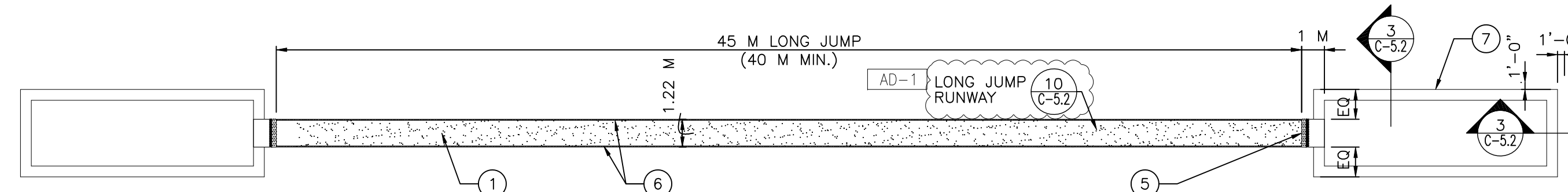
LANDING AREA
SCALE: 1" = 1'-0"



TAKE-OFF BOARD
SCALE: 3" = 1'-0"



POLE VAULT RUNWAY
SCALE: 1/8" = 1'-0"

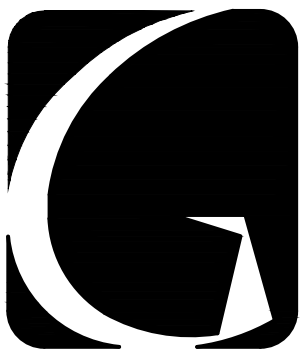


LONG JUMP
SCALE: 1/16" = 1'-0"

LONG JUMP/TRIPLE JUMP PLAN NOTES:

- ATHLETIC SURFACE.
- LONG JUMP START LINE INDICATED WITH 10cm WHITE PAINT STRIPE.
- MENS TRIPLE JUMP FOUL LINE INDICATED WITH 10cm PAINT WHITE STRIPE.
- WOMENS TRIPLE JUMP FOUL LINE INDICATED WITH 10cm WHITE PAINT STRIPE.
- TAKEOFF BOARD.
- 5cm WHITE STRIPES BORDERING ATHLETIC SURFACE.
- LANDING AREA - OFCL. SEE CIVIL DRAWINGS FOR UNDERDRAINAGE.
- LIMIT OF ASPHALT SURFACING

REVISIONS	MARK	DATE	ISSUED FOR
AD-1	01/05/2023	ADDENDUM NO. 1	
AD-2	01/11/2024	ADDENDUM NO. 2	

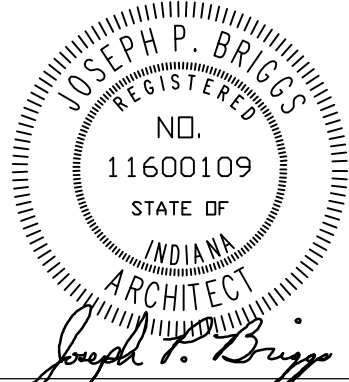


GIBRALTAR
DESIGN
ARCHITECTURE • ENGINEERING • INTERIOR DESIGN

PROJECT
**CHESTERTON HS
STADIUM
IMPROVEMENTS**
DUNELAND SCHOOL CORPORATION
CHESTERTON, INDIANA

GIBRALTAR DESIGN
9102 N. Meridian St., Ste. 300
Indianapolis, IN 46260
Homepage: www.GibraltarDesign.com
Email: info@GibraltarDesign.com
Phone: 317.580.5777 Fax: 317.580.5778

PROJECT
21-149
DATE
12/14/23
COORDINATED BY
DTB
DRAWN BY
DTB
CHECKED BY
DTB JPB



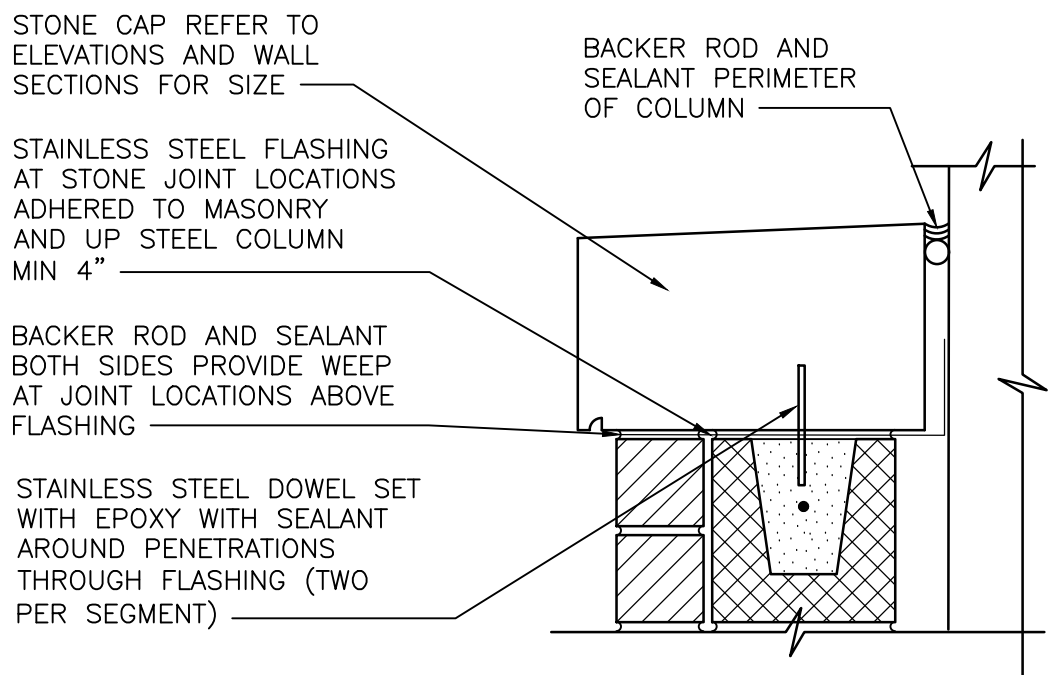
COPYRIGHT NOTICE:
THE CONCEPTS, DESIGNS, PLANS, DETAILS, ETC., SHOWN ON THIS DOCUMENT ARE THE PROPERTY OF GIBRALTAR DESIGN AND WERE CREATED FOR USE ON THIS SPECIFIC PROJECT. NONE OF THIS INFORMATION SHALL BE USED BY ANY PERSON OR FIRM FOR ANY PURPOSE WITHOUT THE EXPRESS WRITTEN CONSENT OF GIBRALTAR DESIGN. THE OWNER MAY RETAIN COPIES FOR INFORMATION AND REFERENCE IN CONNECTION ONLY WITH THIS PROJECT.

REVISIONS		
MARK	DATE	ISSUED FOR
AD-2	01/11/24	ADDENDUM NO. 2

DRAWING
**UNIT 'A' ARCHITECTURAL
FIRST FLOOR PLAN**

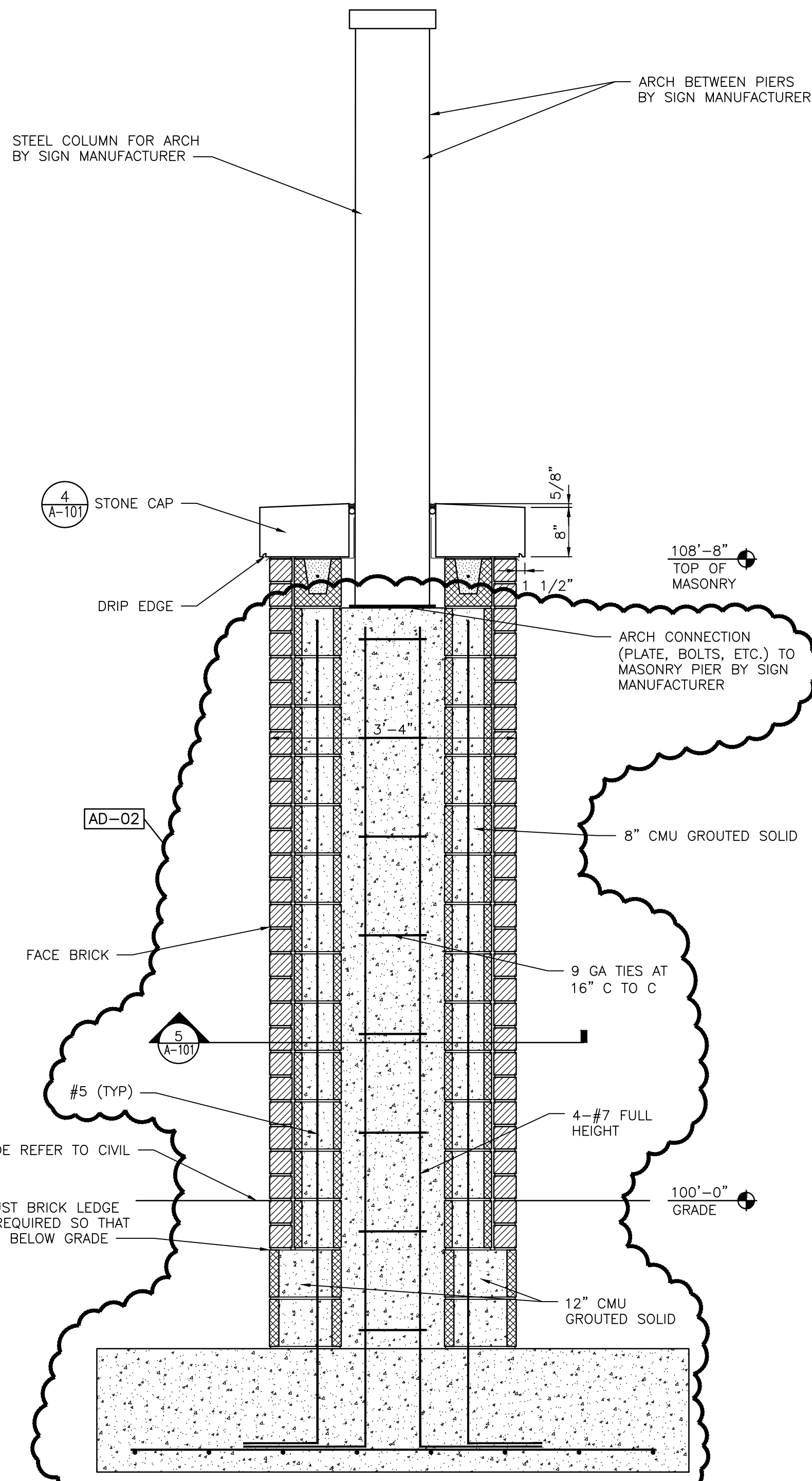
PROJECT
**CHESTERTON HS STADIUM
IMPROVEMENTS**

© GIBRALTAR DESIGN SHEET
A-101



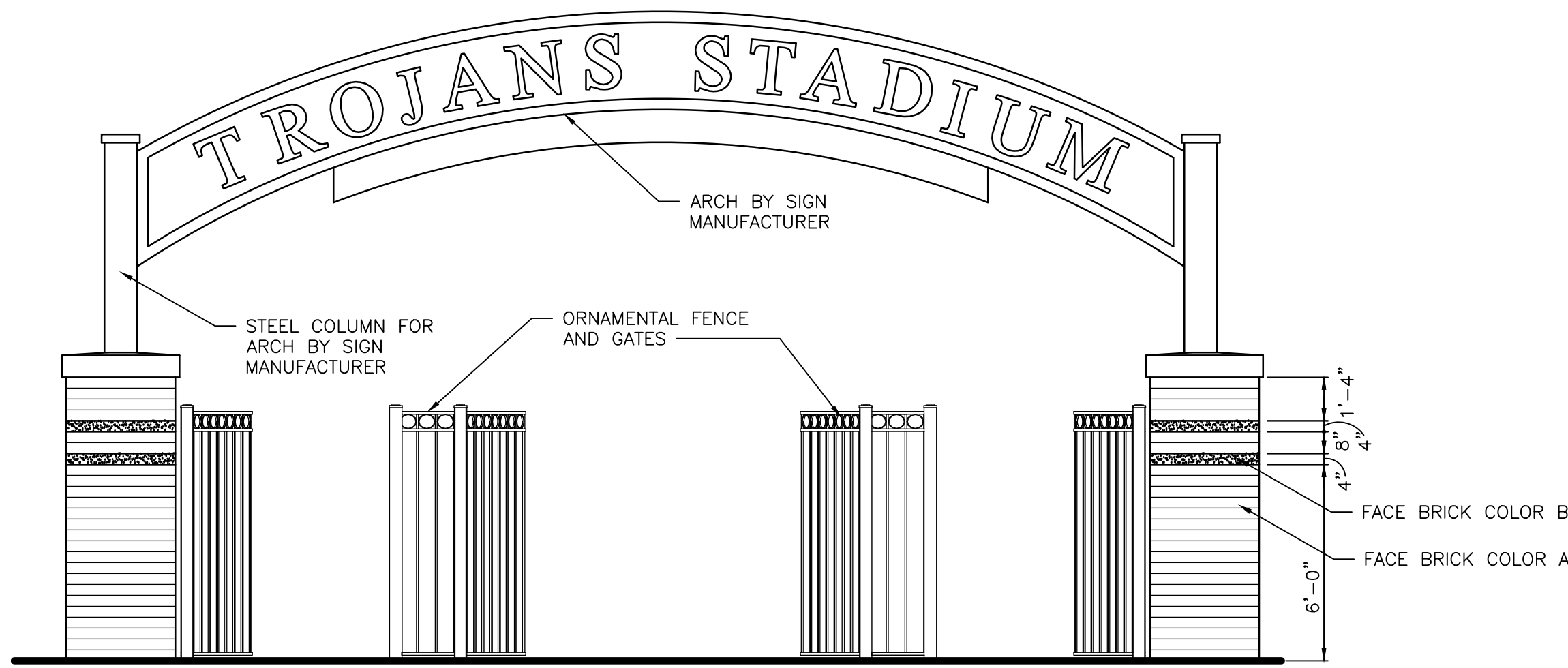
STONE CAP DETAIL
SCALE: 1 1/2" = 1'-0"

4
A-101



MASONRY PIER SECTION
SCALE: 3/4" = 1'-0"

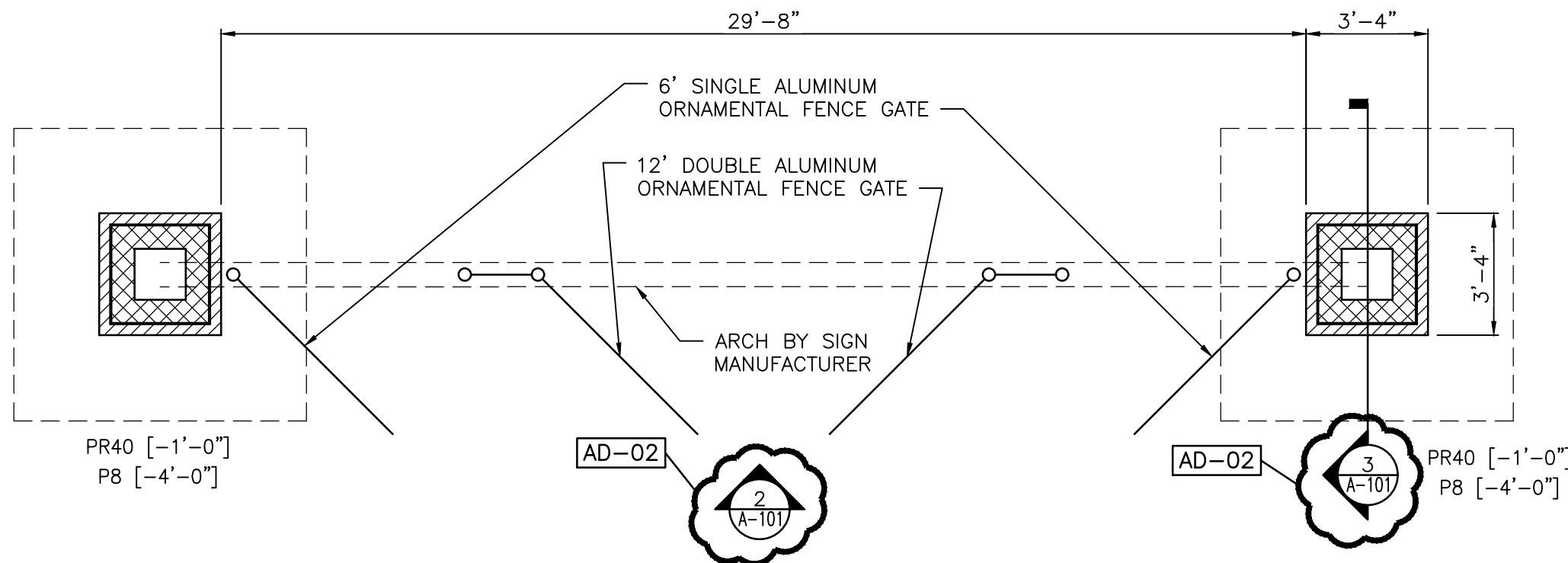
3
A-101



STADIUM ENTRANCE ELEVATION
SCALE: 1/4" = 1'-0"

2
A-101

PAD SCHEDULE					PIER SCHEDULE		
NOTE: ALL PADS ARE DESIGNED FOR 2500 PSF SOIL BEARING.					MARK & SIZE	REINFORCING	
MARK	WIDTH	DEPTH	LENGTH	REINFORCEMENT (1/2 EACH WAY)	PR40-40"x40"	VERTICAL	TIES
P8	8'-0"	1'-8"	8'-0"	16 - #5		4 - #7	9GA @ 16"



STADIUM ENTRANCE PLAN

1
A-101

Thursday, 1/11/2024 - 3:59 PM - LAST SAVED BY: DBURNS
Y:\21-148 DUNELAND SC - CHESTERTON HS ADDITIONS
AND RENOVATIONS\CHESTERTON HS TURF REPLACEMENT
DRAWINGS\150042.DWG