

**ADDENDUM  
NO. 1**

**June 5, 2024**

**Connersville High School & Frazee Elem. Renovations  
1100 Spartan Drive – High School  
600 West Third Street – Frazee Elem.  
Connersville, IN 47331**

**TO: ALL BIDDERS OF RECORD**

This Addendum forms a part of and modifies the Bidding Requirements, Contract Forms, Contract Conditions, the Specifications and the Drawings dated May 15, 2024, by Gibraltar Design. Acknowledge receipt of the Addendum in the space provided on the Bid Form. Failure to do so may subject the Bidder to disqualification.

This Addendum consists of Pages ADD 1-1 through ADD 1-2 and attached Gibraltar Design Addendum No. 1 dated June 5, 2024, consisting of 3 Pages, and, **Frazee Elementary** Revised Addendum Drawings M-101F, M-102F, M-103F, M-301F, M-501F, M-601F, M-602F, ED101F, EL101F, EP101F, E-501F, E-502F, E-503F, E-601F, E-602F. **Connersville HS** Revised Addendum Drawings PD201C, P-201C, P-501C, EP101C, EP111C, E-501C, and E-601C.

**SPECIFICATION SECTION 01 12 00 MULTIPLE CONTRACT SUMMARY**

1. Paragraph 3.03 Bid Categories

**E. Bid Category No. 5 – Fire Protection, Plumbing & HVAC**

Add the following clarification:

5. Include removal, storage and reinstallation of any existing devices/equipment/fixtures related to this Bid Categories scope that's required to complete replacement of adjacent renovation work.

**F. Bid Category No. 6 – Electrical & Technology**

Add the following clarification:

4. Include removal, storage and reinstallation of any existing devices/equipment/fixtures related to this Bid Categories scope that's required to complete replacement of adjacent renovation work. Include extension of rough-ins where wall thickness changes.

## ADDENDUM ONE

**Addendum One (AD.01)** to the drawings and specifications prepared by Gibraltar Design for **Frazee Elementary School and Connersville High School Natatorium Renovations** for Fayette County School Corporation, Connersville, Indiana.

All Contractors bidding on this project shall read all of the items covered below and shall comply with all of the requirements as set forth, including any necessary refinements or additions generated by this Addendum and required by the intent of the original contract documents. All Contractors shall acknowledge on their bid form that they have received this Addendum and include the appropriate content of same within their bid proposal.

## SPECIFICATIONS

- 1. Specification Section 08 91 00                      Aluminum Wall Louvers**
  - A. Add Paragraph 2.1.G. to read:  
"G. Pottorff, Fort Worth, Texas."
  - B. Add Paragraph 2.5.G. to read:  
"G. Model EFD-445 (P)."

## DRAWINGS

### FRAZEE ELEMENTARY SCHOOL

- 2. Sheet M-101F, M-102F, M-103F**
  - A. Refer to three (3) revised full size drawing included in this addendum, for added pipe cover notes.
- 3. Sheet M-301F**
  - A. Refer to revised full size drawing included in this addendum, for the following revisions:
    1. Add demolition notes to sheet note box for hot water pumps, chemical treatment, and bypass filter.
    2. Hot water pumps and chemical treatment to be removed and notes.
    3. Add new hot water pumps, chemical treatment, and notes.
- 4. Sheet M-501F**
  - A. Refer to revised full size drawing included in this addendum, for HWP-1 and HWP-2 added to pump schedule.
- 5. Sheet M-601F**
  - A. Refer to revised full size drawing included in this addendum, for added piping support detail.

**6. Sheet M-602F**

- A. Refer to revised full size drawing included in this addendum, for revised hot water system piping diagram.

**7. Sheet ED101F**

- A. Refer to revised full size drawing included in this addendum, for the following revision:
1. Existing lighting controls to be demolished in Lighting Lower Level Plan.

**8. Sheet EL101F**

- A. Refer to revised full size drawing included in this addendum, for the following revisions:
1. New lighting controls in Lighting Lower Level Plan – Unit A.
  2. New lighting controls in Electrical Lighting Overall Plan.
  3. Add typical classroom zoning note in 4<sup>th</sup> Grade A-111.

**9. Sheet EP101F**

- A. Refer to revised full size drawing included in this addendum, for the following revisions:
1. Add connection to new Alternate Scope #1 in Boiler A-114.
  2. Revise new panel AG1 in Boiler A-114.

**10. Sheet E-501F**

- A. Refer to revised full size drawing included in this addendum, for Alternate HWPs added to Pump Equipment Connection Schedule.

**11. Sheet E-502F**

- A. Refer to revised full size drawing included in this addendum, for revised panel schedules.

**12. Sheet E-503F**

- A. Add new full size drawing included in this addendum, for new panels A1G and X-EM/LB.

**13. Sheet E-601F**

- A. Refer to revised full size drawing included in this addendum, for revised lighting fixture schedule.

**14. Sheet E-602F**

- A. Refer to revised full size drawing included in this addendum, for revised schematic one-line diagram.

## CONNERSVILLE HS NATATORIUM

**15. Sheet PD201C**

- A. Refer to revised full size drawing included in this addendum, for the following revisions:
1. Add location of existing domestic storage tank to remain.
  2. Add locations of domestic water circulation pumps to be demolished.

**16. Sheet P-201C**

- A. Refer to revised full size drawing included in this addendum, for the following revisions:
1. Add location of existing domestic storage tank to remain.
  2. Add locations of new domestic water recirculation pumps CP-1 and CP-2.

**17. Sheet P-501C**

- A. Refer to revised full size drawing included in this addendum, for the following revisions:
1. Revised Water Heater Diagram.
  2. Revised Water Softener Diagram.
  3. Revised Plumbing Equipment Schedule.

**18. Sheet EP101C**

- A. Refer to revised full size drawing included in this addendum, for added circuit for water heater.

**19. Sheet EP111C**

- A. Refer to revised full size drawing included in this addendum, for the following revisions:
1. Add and revise locations of plumbing equipment.
  2. Add Sheet Note 8.
  3. Revise note for hot water pumps on demolition plan.

**20. Sheet E-501C**

- A. Refer to revised full size drawing included in this addendum, for the following revisions:
1. Revise color temperature for lights visible in pool area.
  2. Add and revise plumbing equipment on mechanical connection schedule.
  3. Add water heater to Panel CJ.

**21. Sheet E-601C**

- A. Refer to revised full size drawing included in this addendum, for the following revisions:
1. Revise panel schedule templates.
  2. Revise chiller water pumps to 40 hp.
  3. Revise loads of circulation pumps.
  4. Add circuit for domestic booster pump.

Pages 1 through 3, inclusive, and Twenty-Two (22) Full-Size Drawings, constitutes the total makeup of **Addendum One**.





**GIBRALTAR**  
DESIGN

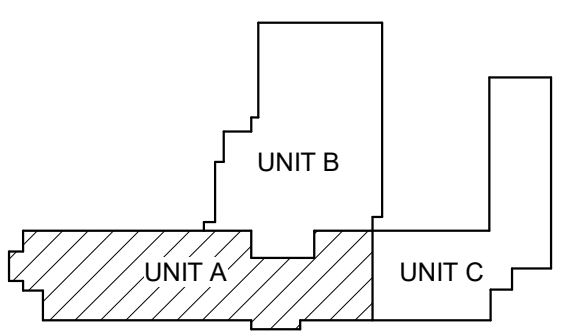
ARCHITECTURE - ENGINEERING - INTERIOR DESIGN



PROJECT:

**FRAZEE  
ELEMENTARY  
SCHOOL -  
RENOVATIONS  
AND RELATED  
WORK**

FOR:  
FAYETTE COUNTY SCHOOLS  
CORPORATION  
CONNERSVILLE, INDIANA



KEY PLAN

100%  
CONSTRUCTION  
DOCUMENTS

**GIBRALTAR DESIGN**

9102 N. Meridian St., Ste. 300  
Indianapolis, IN 46280  
Homepage: www.GibraltarDesign.com  
Email: info@GibraltarDesign.com  
Phone 317.580.5777 Fax 317.580.5778

PROJECT

23-152

DATE

05/15/24

COORDINATED BY

EH

DRAWN BY

CA

CHECKED BY

DJ



**COPYRIGHT NOTICE:**  
THE CONCEPTS, DESIGN, PLANS, DETAILS, ETC. SHOWN ON THIS DOCUMENT ARE THE PROPERTY OF GIBRALTAR DESIGN. NONE OF THIS INFORMATION SHALL BE USED BY ANY PERSON OR FIRM FOR ANY PURPOSES WITHOUT THE EXPRESS WRITTEN CONSENT OF GIBRALTAR DESIGN. THE OWNER MAY RETAIN COPIES FOR INFORMATION AND REFERENCE IN CONNECTION ONLY WITH THIS PROJECT.

REVISIONS

MARK	DATE	ISSUED FOR
AD-01	06/05/24	ADDENDUM 1

DRAWING  
UNIT "A" FIRST FLOOR AND  
LOWER LEVEL  
MECHANICAL PLANS

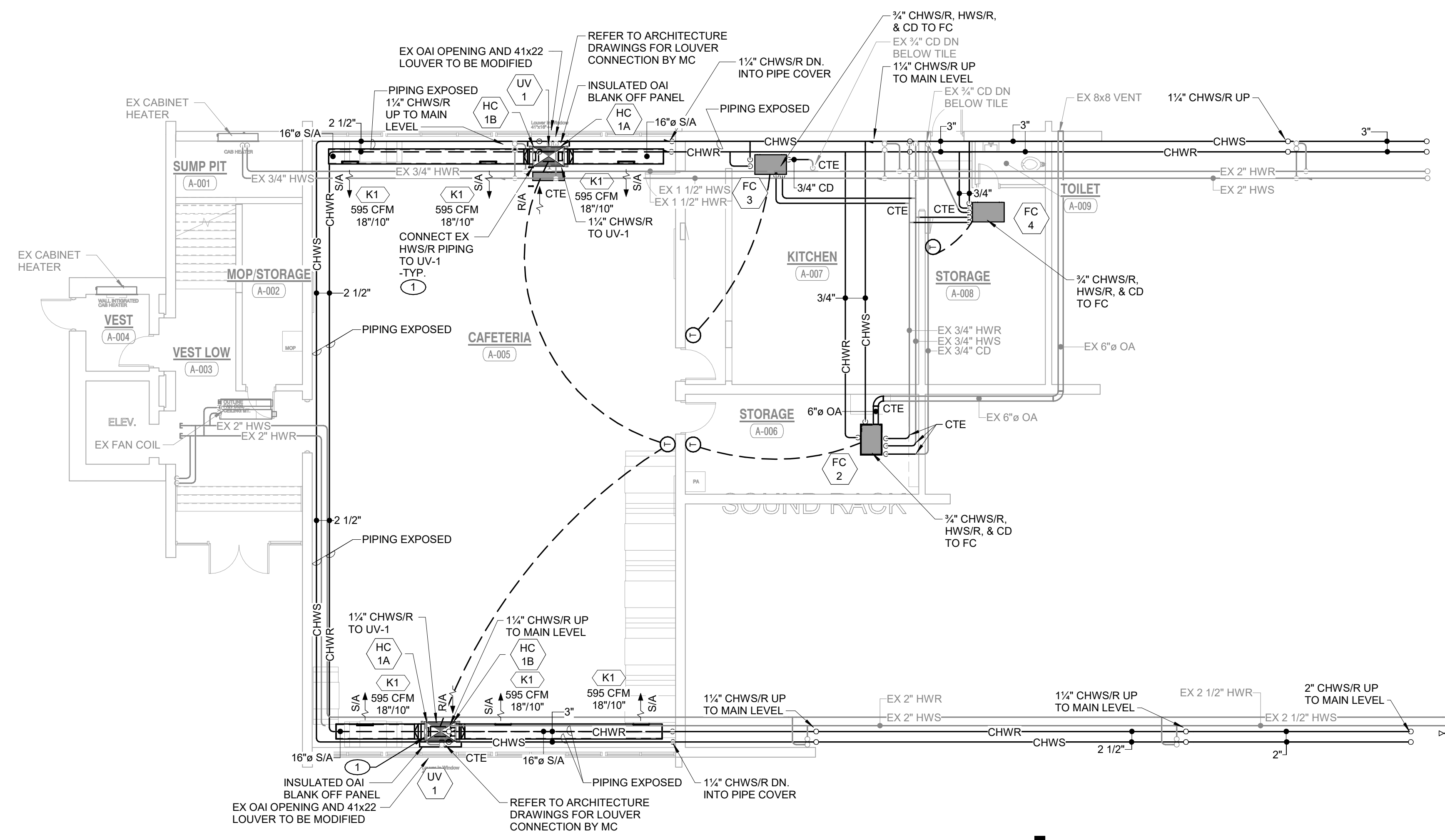
PROJECT  
FRAZEE ELEMENTARY SCHOOL -  
RENOVATIONS AND RELATED  
WORK

© GIBRALTAR  
DESIGN

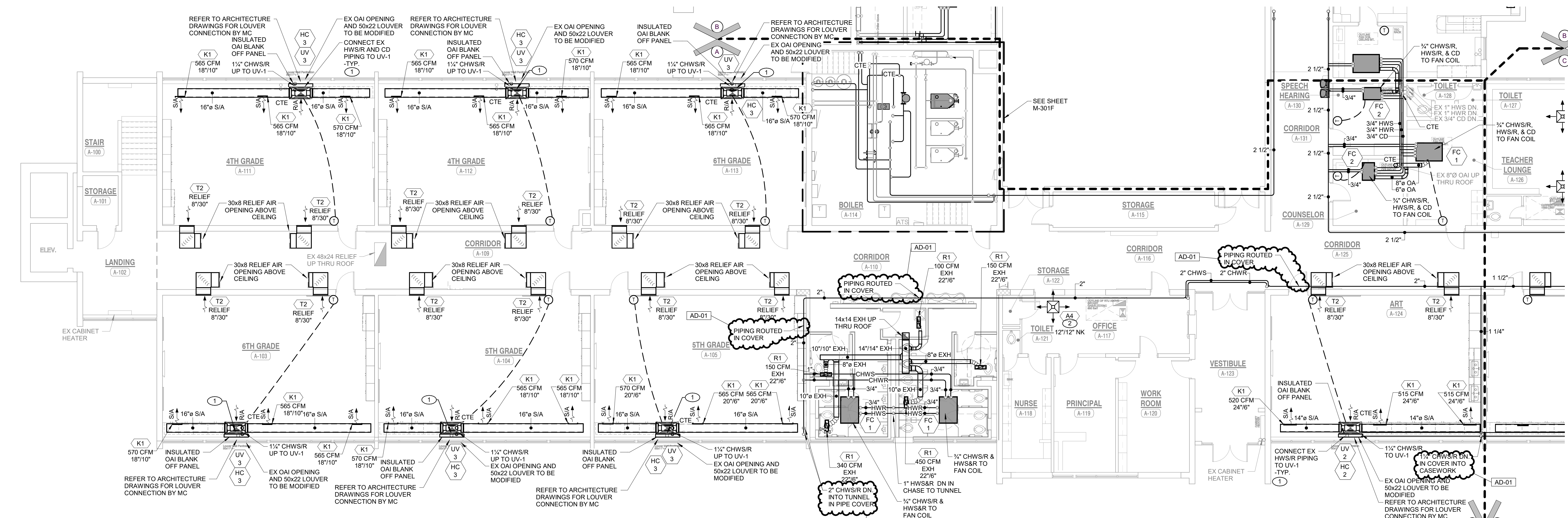
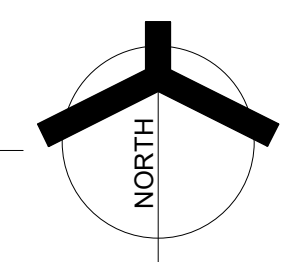
SHEET

**A M-101F**

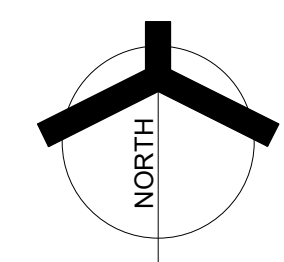
- SHEET NOTES**
- CONNECT NEW HOT WATER SUPPLY, HOT WATER RETURN, AND CONDENSATE PIPING TO EXISTING HOT WATER SUPPLY, HOT WATER RETURN, AND CONDENSATE PIPING AND TO NEW UNIT VENTILATOR. NEW PIPING SHALL MATCH EXISTING PIPE SIZE.
  - CONNECT EXISTING SUPPLY AIR DUCTWORK TO NEW SUPPLY AIR DIFFUSER COMPLETE AS REQUIRED. PROVIDE ADDITIONAL DUCTWORK IF NECESSARY. BALANCE NEW SUPPLY AIR DIFFUSER TO EXISTING AIRFLOW CAPACITY.



**2 MECHANICAL LOWER LEVEL PLAN - UNIT A**  
M-101F 1/8" = 1'-0"



**1 MECHANICAL FIRST FLOOR PLAN - UNIT A**  
M-101F 1/8" = 1'-0"



C:\Users\callen\Documents\MEG\_Frazees Elementary\_MEP\_R02\_callen\UPBAC.rvt 6/4/2024 11:36:00 AM





























**GIBRALTAR**  
DESIGN

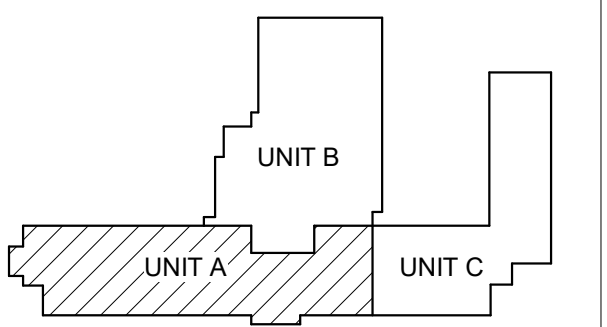
ARCHITECTURE - ENGINEERING - INTERIOR DESIGN



PROJECT:

**FRAZEE  
ELEMENTARY  
SCHOOL -  
RENOVATIONS  
AND RELATED  
WORK**

FOR:  
FAYETTE COUNTY SCHOOLS  
CORPORATION  
CONNERSVILLE, INDIANA



KEY PLAN  
NORTH

100%  
CONSTRUCTION  
DOCUMENTS

**GIBRALTAR DESIGN**

9102 N. Meridian St., Ste. 300  
Indianapolis, IN 46280  
Homepage: www.GibraltarDesign.com  
Email: info@GibraltarDesign.com  
Phone 317.580.5777 Fax 317.580.5778

PROJECT  
23-152  
DATE  
05/15/24  
COORDINATED BY  
BK  
DRAWN BY  
Bok  
CHECKED BY  
DJ



**COPYRIGHT NOTICE:**  
THE CONCEPTS, DESIGN, PLANS, DETAILS, ETC. SHOWN ON THIS DOCUMENT ARE THE PROPERTY OF GIBRALTAR DESIGN AND SHALL REMAIN THE PROPERTY OF GIBRALTAR DESIGN. NONE OF THIS INFORMATION SHALL BE USED BY ANY PERSON OR FIRM FOR ANY PURPOSES WITHOUT THE EXPRESS WRITTEN CONSENT OF GIBRALTAR DESIGN. THE OWNER MAY RETAIN COPIES FOR INFORMATION AND REFERENCE IN CONNECTION ONLY WITH THIS PROJECT.

REVISIONS	MARK	DATE	ISSUED FOR
	AD-01	06/05/24	ADDENDUM 1

DRAWING  
**UNIT "A" ELECTRICAL  
FIRST FLOOR AND LOWER  
LEVEL DEMOLITION PLANS**

PROJECT  
FRAZEE ELEMENTARY SCHOOL -  
RENOVATIONS AND RELATED  
WORK

© GIBRALTAR DESIGN

SHEET

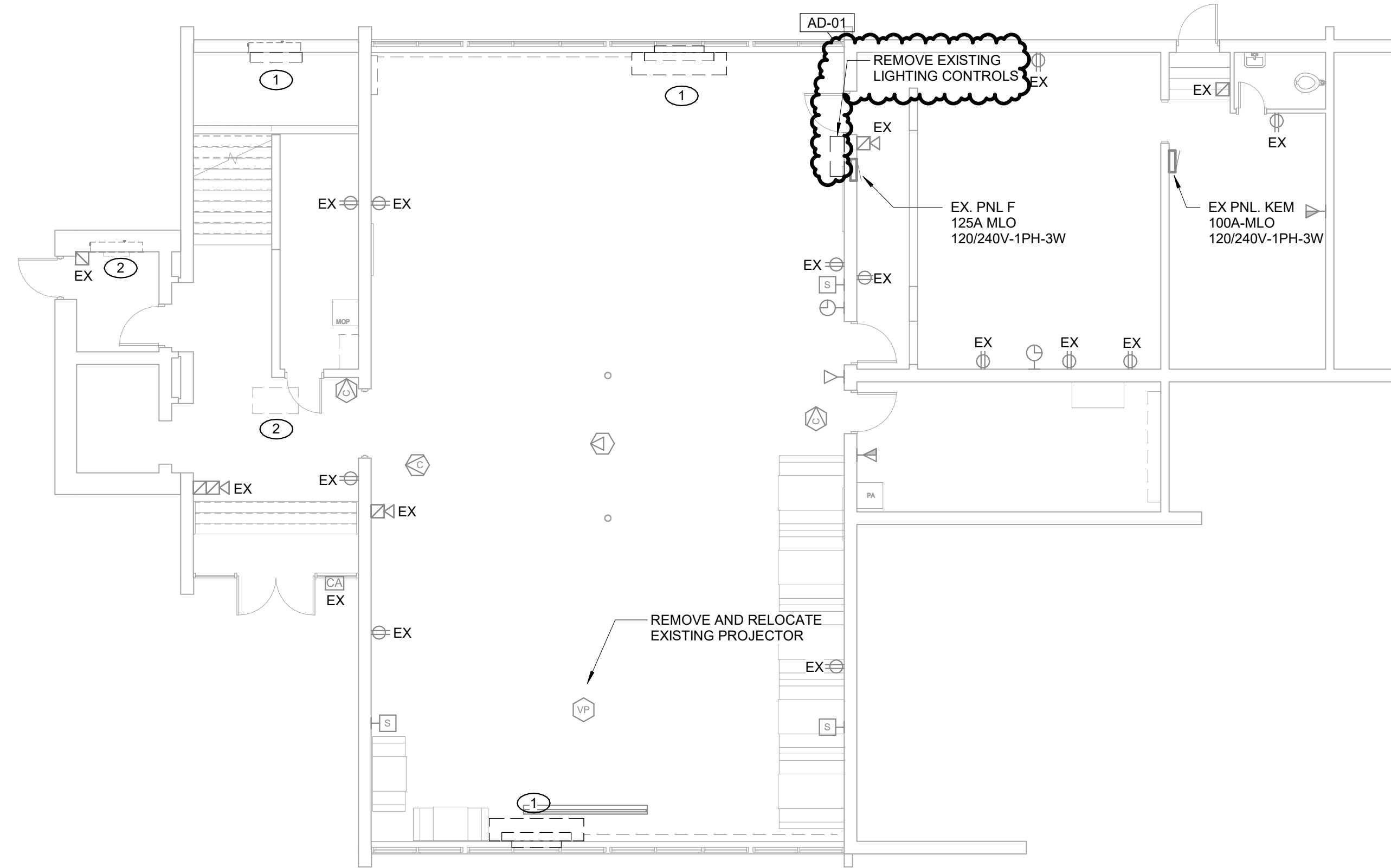
**A ED101F**

**GENERAL NOTES**

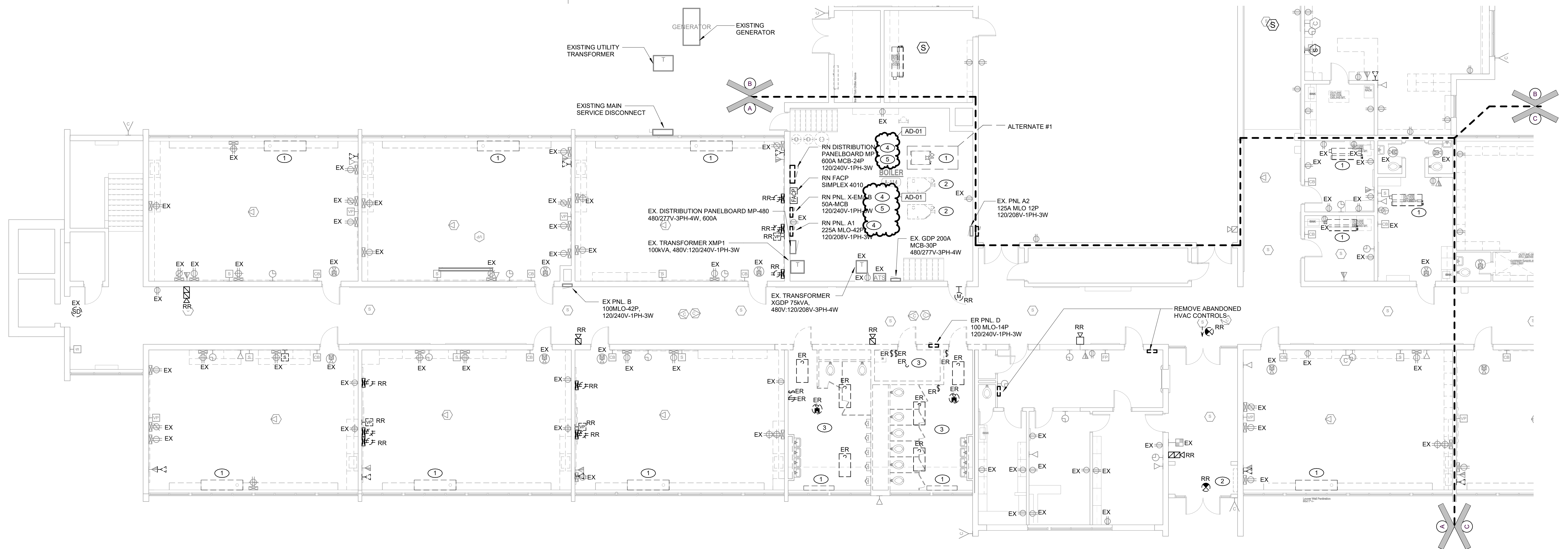
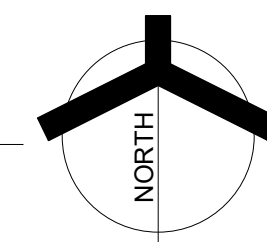
- CAREFULLY REVIEW EXISTING CONDUITS, DEVICES, ETC. IN ROOMS ALONG WITH DRAWINGS TO REVIEW FOR CONFLICTS. REMOVE AND RELOCATE CONDUITS, DEVICES, BOXES, CLOCKS, INTERCOM SPEAKERS, SOUND REINFORCEMENT SYSTEM SPEAKERS, BELLS, STRUCTURED CABLING, FIRE ALARM, OTHER EXISTING ELECTRICAL SYSTEMS, ETC. AS REQUIRED TO ACCOMMODATE ARCHITECTURAL, CEILING WORK, MECHANICAL, CASEWORK REVISIONS IN INDIVIDUAL ROOMS, ETC. COMPLETE AS REQUIRED.
- REFER TO SHEETS EL101F FOR LIGHTING AND CONTROLS TO BE REMOVED AND OTHER POWER DISTRIBUTION WORK.
- REFER TO SINGLE-LINE DIAGRAM FOR PANELBOARDS TO BE REPLACED AND RECONSTRUCTION WORK. COORDINATE WITH GENERAL CONSTRUCTION. THE CONTRACTOR IS HEREBY ADVISED THAT THESE DRAWINGS MAY NOT INDICATE ALL EXISTING WIRING AND/OR EQUIPMENT WHICH MUST BE REMOVED, REWORKED, RELOCATED, ETC. TO ACCOMMODATE DEMOLITION AND RECONSTRUCTION WORK IN THE EXISTING BUILDING.
- ALL TELECOMMUNICATION DEVICES SHOWN ON PLAN ARE FOR REFERENCE ONLY. REFER TO TELECOM PLANS FOR DIRECTION FOR TELECOMMUNICATION SCOPE.

**SHEET NOTES**

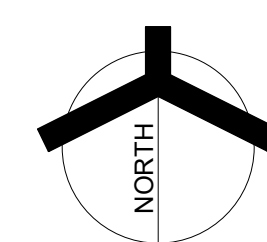
- DISCONNECT EXISTING ELECTRICAL CONNECTION FOR MECHANICAL EQUIPMENT TO BE REMOVED. REPLACE CONDUIT AND WIRING CONNECTION FOR NEW EQUIPMENT IN THE SAME LOCATION. SEE POWER PLANS FOR ADDITIONAL INFORMATION.
- EXISTING MECHANICAL EQUIPMENT TO REMAIN.
- LIGHTING WORK SHOWN IN SPACE TO BE FOLLOWED PER THIS SHEET AS THERE IS RENOVATIONS TO THE SPACE AND LIGHTING SYSTEM IS BEING REPLACED WITH NEW.
- REMOVE AND REPLACE EXISTING SURFACE MOUNTED PANEL. PAINT WALL SURFACE TO MATCH EXISTING CONDITIONS.
- EXTEND THE EXISTING MAIN FEEDER AND BRANCH CIRCUITRY FROM THE EXISTING PANEL TO THE NEW PANEL AND CONNECT. COMPLETE AS REQUIRED. THE NEW PANEL SHALL MATCH THE EXISTING PANEL VOLTAGE, WIRING, PHASE, AIC RATING, ETC. VERIFY THE QUANTITY AND AMPERAGE OF ALL BREAKERS WITH IN THE PANEL AND PROVIDE THE NEW PANEL CIRCUIT BREAKERS TO MATCH. NEW PANELBOARDS SHALL BE PROVIDED WITH A COPPER GROUND TERMINAL BUS CONNECT TO THE CABINET/MAIN FEEDER CONDUIT WITH A GROUND CONDUCTOR SIZED PER CODE. ALL EXISTING BRANCH CIRCUIT GROUND CONNECTIONS SHALL BE CONNECTED TO THE NEW GROUND BUS. PROVIDE ALL CONDUIT, WIRING, SPLICE BOXES, SPLICING KITS, ETC. FOR A COMPLETE AND CODE COMPLIANT INSTALLATION. COORDINATE CONDITIONS AND REQUIREMENTS IN FIELD.



**2 ELECTRICAL DEMOLITION LOWER LEVEL PLAN - UNIT A**  
ED101F 1/8" = 1'-0"



**1 ELECTRICAL DEMOLITION FIRST FLOOR PLAN - UNIT A**  
ED101F 1/8" = 1'-0"







**GIBRALTAR**  
DESIGN

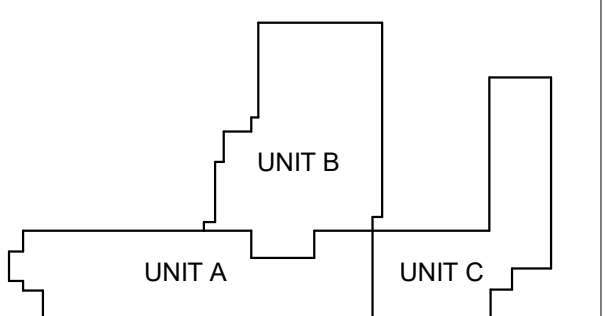
ARCHITECTURE - ENGINEERING - INTERIOR DESIGN



PROJECT:

**FRAZEE  
ELEMENTARY  
SCHOOL -  
RENOVATIONS  
AND RELATED  
WORK**

FOR:  
FAYETTE COUNTY SCHOOLS  
CORPORATION  
CONNERSVILLE, INDIANA



KEY PLAN



100%  
CONSTRUCTION  
DOCUMENTS

**GIBRALTAR DESIGN**

9102 N. Meridian St., Ste. 300  
Indianapolis, IN 46260  
Homepage: www.GibraltarDesign.com  
Email: info@GibraltarDesign.com  
Phone 317.580.5777 Fax 317.580.5778

PROJECT

23-152

DATE

05/15/24

COORDINATED BY

BK

DRAWN BY

Bok

CHECKED BY

DJ

COPYRIGHT NOTICE:

THE CONCEPTS, DESIGN, PLANS, DETAILS, ETC. SHOWN ON THIS DOCUMENT ARE THE PROPERTY OF GIBRALTAR DESIGN AND ARE NOT TO BE REPRODUCED OR TRANSMITTED IN ANY FORM OR BY ANY MEANS, WITHOUT THE EXPRESS WRITTEN CONSENT OF GIBRALTAR DESIGN. THE OWNER MAY RETAIN COPIES FOR INFORMATION AND REFERENCE IN CONNECTION ONLY WITH THIS PROJECT.

REVISIONS

MARK DATE ISSUED FOR

AD-01 06/05/24 ADDENDUM 1

DRAWING

OVERALL ELECTRICAL  
LIGHTING PLAN

PROJECT

FRAZEE ELEMENTARY SCHOOL -  
RENOVATIONS AND RELATED  
WORK

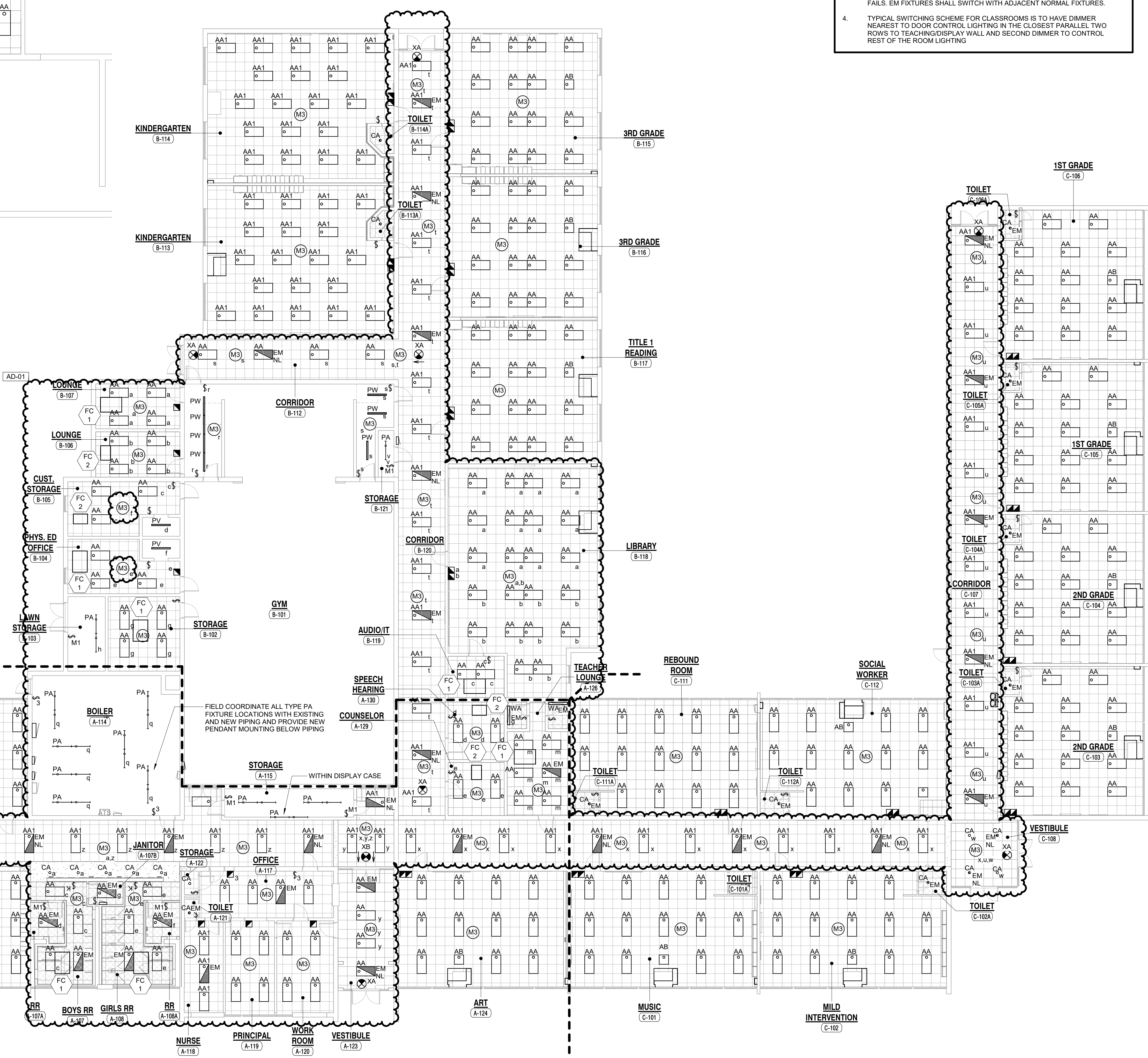
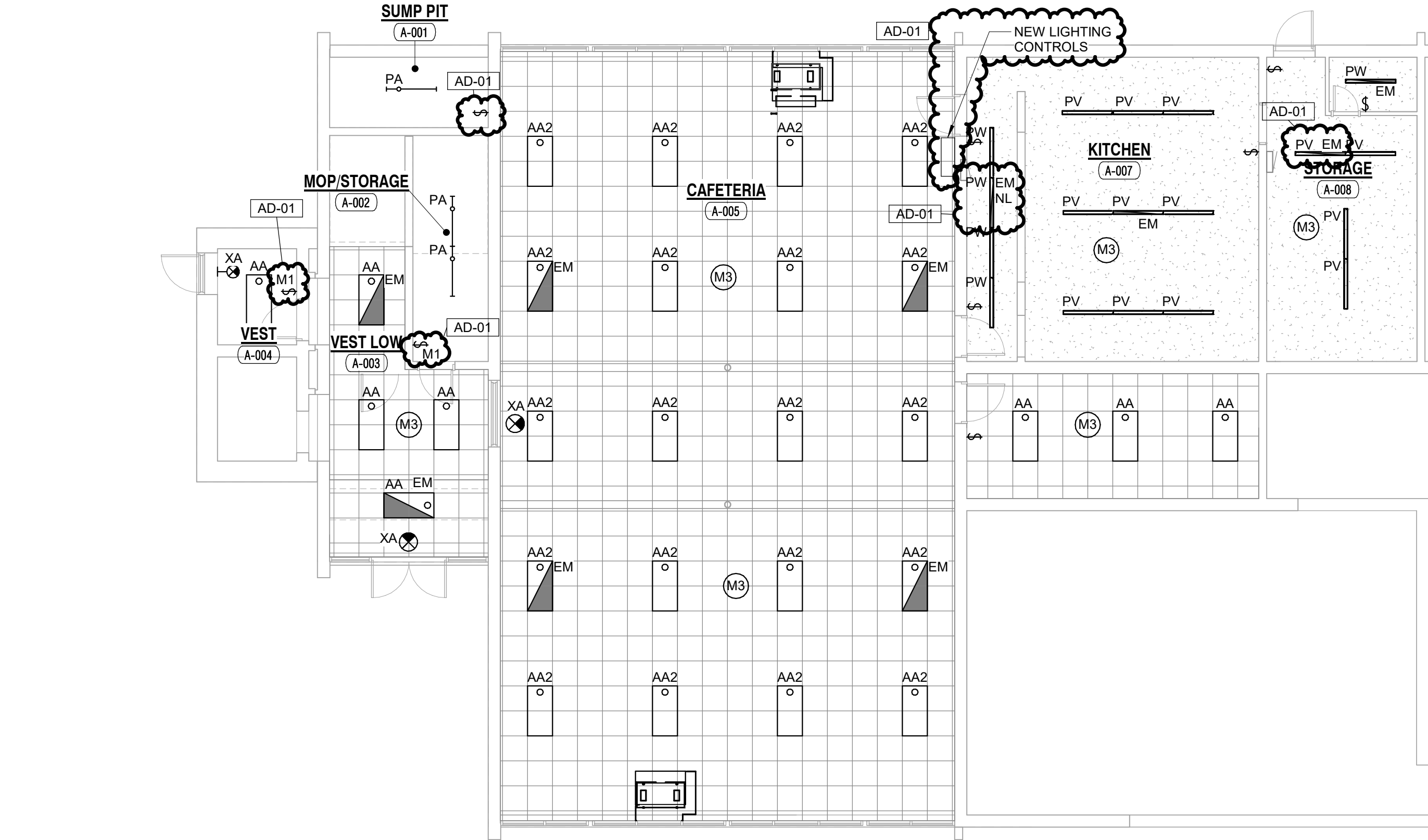
DESIGN

SHEET

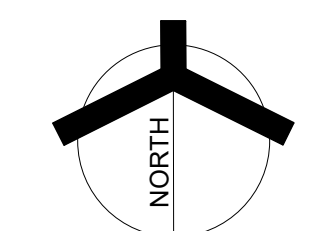
**EL101F**

- GENERAL NOTES**
- DISCONNECT AND REMOVE EXISTING ELECTRICAL DEVICES, EQUIPMENT, LIGHTING, WIRING, ETC. AS REQUIRED TO FACILITATE CEILING DEMOLITION AND RECONSTRUCTION WORK. COORDINATE WITH GENERAL CONTRACTOR. THE CONTRACTOR IS HEREBY ADVISED THAT THESE DRAWINGS MAY NOT INDICATE ALL EXISTING WIRING AND/OR LIGHTING WHICH MUST BE REMOVED, REWORKED, RELOCATED, ETC. TO ACCOMMODATE DEMOLITION AND RECONSTRUCTION WORK IN THE EXISTING BUILDING.
  - RECONNECT NEW LIGHT FIXTURES TO EXISTING LIGHTING CIRCUITRY AND NEW SWITCHING DEVICES. MAXIMUM 1400W PER 120 VOLT CIRCUIT. WHERE NECESSARY, DUE TO LIMITATIONS IN THE EXISTING CIRCUITRY, THIS CONTRACTOR SHALL FURNISH AND INSTALL 20A-1 POLE CIRCUIT BREAKERS AS REQUIRED IN EXISTING SPACE OF EXISTING PANEL AND EXTEND 2 #12 AND 1 #12 GRD IN 3/4" CONDUIT COMPLETE AS REQUIRED. VERIFY CONDITIONS AND REQUIREMENTS IN FIELD.
  - CONNECT INTEGRAL BATTERIES OF NEW EMERGENCY LIGHT FIXTURES AND EXIT SIGNS TO EXISTING LIGHTING CIRCUITRY AHEAD OF LOCAL SWITCHING. MAXIMUM 1400W PER 120 VOLT CIRCUIT. LIGHTING AND EXIT SIGNS SHALL OPERATE ON BATTERY WHEN NORMAL LIGHTING CIRCUIT FAILS. EM FIXTURES SHALL SWITCH WITH ADJACENT NORMAL FIXTURES.
  - TYPICAL SWITCHING SCHEME FOR CLASSROOMS IS TO HAVE DIMMER NEAREST TO DOOR CONTROL LIGHTING IN THE CLOSEST PARALLEL TWO ROWS TO TEACHING/DISPLAY WALL AND SECOND DIMMER TO CONTROL REST OF THE ROOM LIGHTING

**2 ELECTRICAL LIGHTING LOWER LEVEL PLAN - UNIT A**  
EL101F 1/8" = 1'-0"



**1 ELECTRICAL LIGHTING OVERALL PLAN**  
EL101F 3/32" = 1'-0"



C:\Users\bkovacevic\OneDrive\Documents\MEG - Frazee Elementary\_MEP\_R22\_bkovacevic.rvt 6/4/2024 2:21:12 PM









**GIBRALTAR**  
DESIGN  
ARCHITECTURE - ENGINEERING - INTERIOR DESIGN



PROJECT:

**FRAZEE  
ELEMENTARY  
SCHOOL -  
RENOVATIONS  
AND RELATED  
WORK**

FOR:  
FAYETTE COUNTY SCHOOLS  
CORPORATION  
CONNERSVILLE, INDIANA

### MECHANICAL EQUIPMENT CONNECTION SCHEDULE

TAG	DESCRIPTION	LOAD					MOCP	VOLT	PHASE	PANEL	CKT. NO.	FUSED SWITCH C/B	FEEDER			STARTER BY:		LOCATION	REMARKS
		WATTS	HP	MCA	FLA	AMPS							CABLE	C	MC	EC			
UV-1	VERTICAL UNIT VENTILATOR - HOT WATER/CHILLED WATER - 4 PIPE	2220	-	9	-	-	15	240	1	VARIES	VARIES	20A/2P	3 #12 & 1 #12 GRD	3/4"	X	-	-	-	
UV-2	VERTICAL UNIT VENTILATOR - HOT WATER/CHILLED WATER - 4 PIPE	2220	-	9	-	-	15	240	1	VARIES	VARIES	20A/2P	3 #12 & 1 #12 GRD	3/4"	X	-	-	-	
UV-3	VERTICAL UNIT VENTILATOR - HOT WATER/CHILLED WATER - 4 PIPE	1771.2	-	7	-	-	15	240	1	VARIES	VARIES	20A/2P	3 #12 & 1 #12 GRD	3/4"	X	-	-	-	
UV-4	VERTICAL UNIT VENTILATOR - HOT WATER/CHILLED WATER - 4 PIPE	2220	-	9	-	-	15	240	1	VARIES	VARIES	20A/2P	3 #12 & 1 #12 GRD	3/4"	X	-	-	-	
UV-5	VERTICAL UNIT VENTILATOR - HOT WATER/CHILLED WATER - 4 PIPE	2220	-	9	-	-	15	240	1	VARIES	VARIES	20A/2P	3 #12 & 1 #12 GRD	3/4"	X	-	-	-	
UV-6	VERTICAL UNIT VENTILATOR - HOT WATER/CHILLED WATER - 4 PIPE	2220	-	9	-	-	15	240	1	VARIES	VARIES	20A/2P	3 #12 & 1 #12 GRD	3/4"	X	-	-	-	
UV-7	VERTICAL UNIT VENTILATOR - HOT WATER/CHILLED WATER - 4 PIPE	2220	-	9	-	-	15	240	1	VARIES	VARIES	20A/2P	3 #12 & 1 #12 GRD	3/4"	X	-	-	-	
FC-1	HORIZONTAL RECESSED FAN COIL UNIT - CHW/WW 4 PIPE	228	-	-	1.9	-	-	120	1	VARIES	VARIES	20A/1P	2 #12 & 1 #12 GRD	3/4"	X	-	-	-	
FC-2	HORIZONTAL RECESSED FAN COIL UNIT - CHW/WW 4 PIPE	180	-	-	1.5	-	-	120	1	VARIES	VARIES	20A/1P	2 #12 & 1 #12 GRD	3/4"	X	-	-	-	
FC-3	HORIZONTAL CABINET FAN COIL UNIT - CHW/WW 4 PIPE	576	-	-	4.8	-	15	120	1	VARIES	VARIES	20A/1P	2 #12 & 1 #12 GRD	3/4"	X	-	-	-	
FC-4	HORIZONTAL CABINET FAN COIL UNIT - CHW/WW 4 PIPE	252	-	-	2.1	-	-	120	1	VARIES	VARIES	20A/1P	2 #12 & 1 #12 GRD	3/4"	X	-	-	-	
B-1	CONDENSING HOT WATER BOILER	960	-	8	-	-	-	120	1	VARIES	VARIES	20A/1P	2 #12 & 1 #12 GRD	3/4"	X	-	-	-ALTERNATE	
TEF-1	ROOF MOUNTED TOILET EXHAUST FAN	864	-	7	-	-	15	120	1	VARIES	VARIES	20A/1P	2 #12 & 1 #12 GRD	3/4"	X	-	-	-	
DBP-1	DOMESTIC BOOSTER PUMP	-	5	-	-	-	0	480	3	MP-480	-	15A/3P	4 #12 & 1 #12 GRD	3/4"	X	-	-	-	

### PUMP EQUIPMENT CONNECTION SCHEDULE

TAG	DESCRIPTION	LOAD WATTS	HP	MOCP	VOLT	PHASE	PANEL	CKT. NO.	FUSED SWITCH C/B	FEEDER			STARTED BY:		LOCATION	REMARKS
										CABLE	C	MC	EC			
CWP-1	BASE MOUNTED CHILLED WATER DISTRIBUTION PUMP	9134	7 1/2	-	480	3	MP-480	-	40A/3P	4 #8 & 1 #10 GRD	3/4"	X	-	-	-	
CWP-2	BASE MOUNTED CHILLED WATER DISTRIBUTION PUMP	9134	7 1/2	-	480	3	MP-480	-	40A/3P	4 #8 & 1 #10 GRD	3/4"	X	-	-	-	
CP-1	IN-LINE CHILLER PUMP	6311	5	-	480	3	MP-480	-	15A/3P	4 #12 & 1 #12 GRD	3/4"	X	-	-	-	
HWP-1	BASE MOUNTED HOT WATER DISTRIBUTION PUMP - ALTERNATE	11626	10	-	480	3	MP-480	-	25A/3P	4 #10 & 1 #10 GRD	3/4"	X	-	-	-ALTERNATE	
HWP-2	BASE MOUNTED HOT WATER DISTRIBUTION PUMP - ALTERNATE	11626	10	-	480	3	MP-480	-	25A/3P	4 #10 & 1 #10 GRD	3/4"	X	-	-	-ALTERNATE	

AD-01

100%  
CONSTRUCTION  
DOCUMENTS

**GIBRALTAR DESIGN**

9102 N. Meridian St. Ste. 300  
Indianapolis, IN 46260  
Homepage: www.GibraltarDesign.com  
Email: info@GibraltarDesign.com  
Phone 317.580.5777 Fax 317.580.5778

PROJECT  
23-152  
DATE  
05/15/24  
COORDINATED BY  
BK  
DRAWN BY  
Bck  
CHECKED BY  
DJ



**COPYRIGHT NOTICE:**  
THE CONCEPTS, DESIGNS, PLANS, DETAILS, ETC. SHOWN ON THIS DOCUMENT ARE THE PROPERTY OF GIBRALTAR DESIGN AND ARE NOT TO BE REPRODUCED OR TRANSMITTED IN ANY FORM OR BY ANY MEANS, ELECTRONIC OR MECHANICAL, INCLUDING PHOTOCOPYING, RECORDING, OR BY ANY INFORMATION STORAGE AND RETRIEVAL SYSTEM, WITHOUT THE EXPRESS WRITTEN CONSENT OF GIBRALTAR DESIGN. THE OWNER MAY RETAIN COPIES FOR INFORMATION AND REFERENCE IN CONNECTION ONLY WITH THIS PROJECT.

REVISIONS

MARK	DATE	ISSUED FOR
AD-01	06/05/24	ADDENDUM 1

DRAWING  
ELECTRICAL SCHEDULES

PROJECT  
FRAZEE ELEMENTARY SCHOOL -  
RENOVATIONS AND RELATED  
WORK

© GIBRALTAR DESIGN

SHEET

**E-501F**



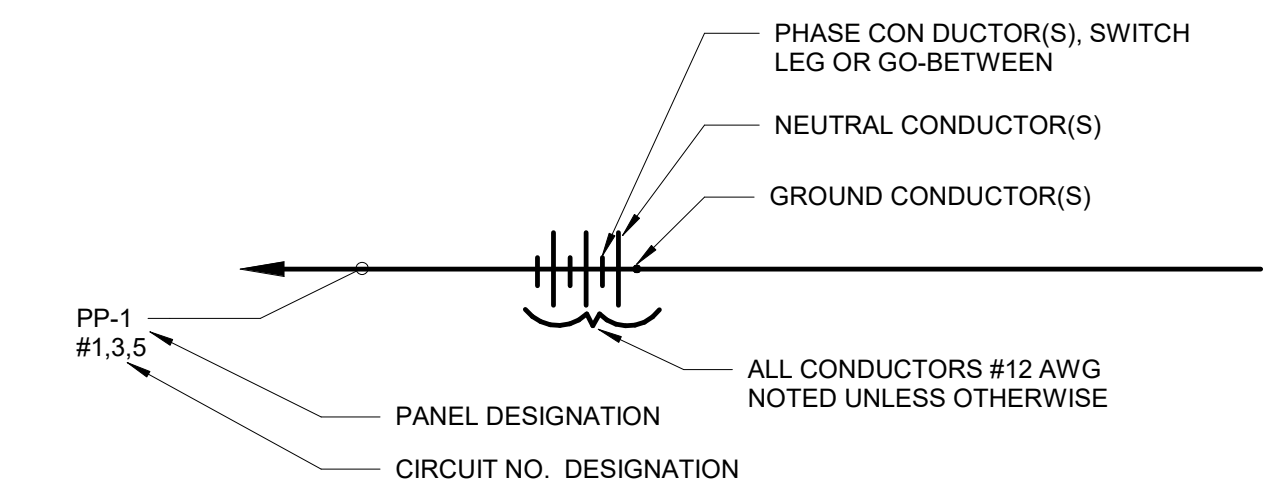








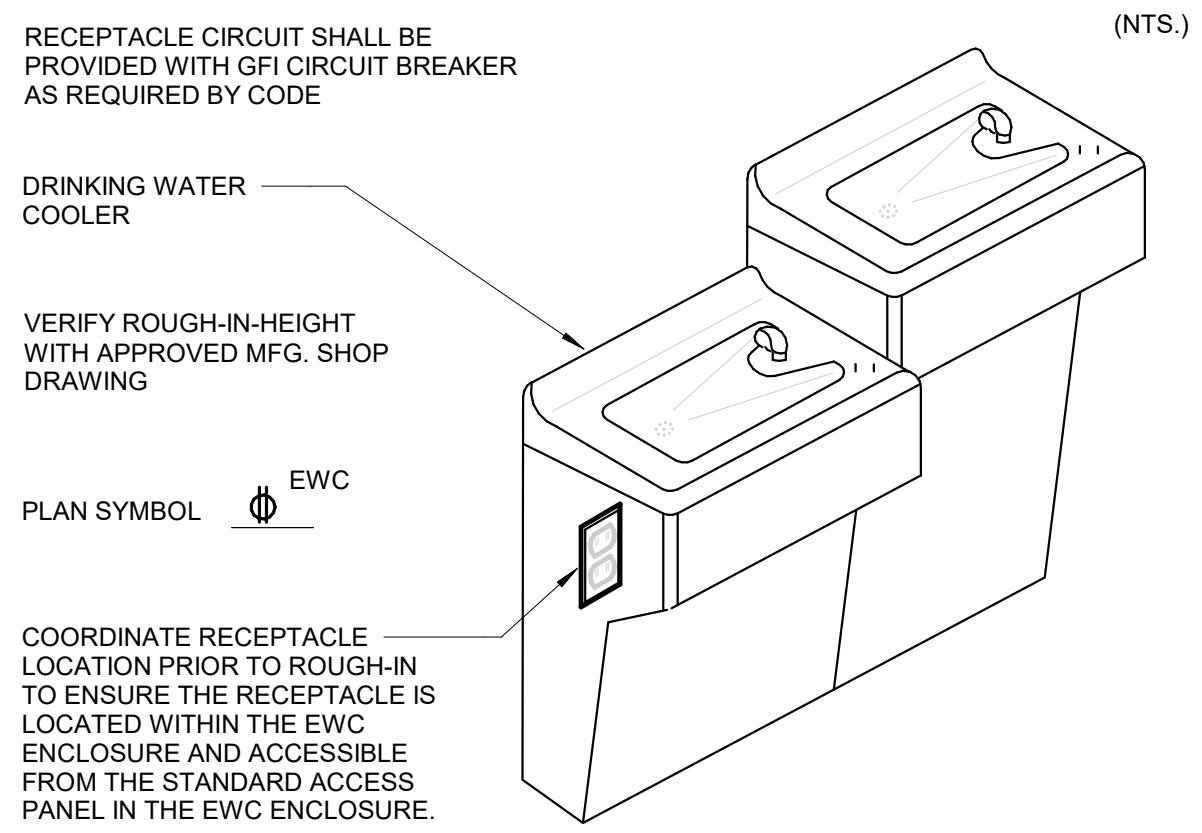
## KEY TO ELECTRICAL CIRCUIT WIRING



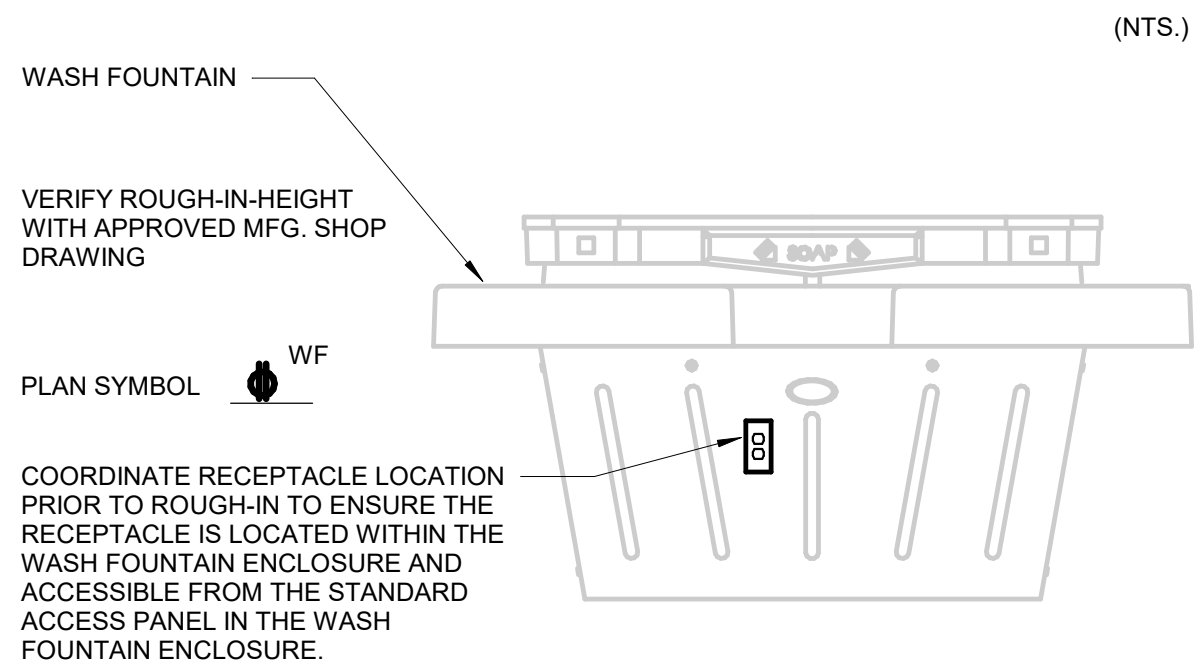
### NOTES:

- ALL WIRING SHALL BE #12 AWG, UNLESS OTHERWISE NOTED.
- MINIMUM CONDUIT SIZE SHALL BE 3/4" EXCEPT FOR THREE (3) WIRES OR LESS, OR CONTROL WIRING WITHIN BUILDINGS, WHICH MAY BE 1/2" CONDUIT.
- 1/2" FLEXSTEEL, GREENFIELD OR SEALITE SHALL BE THE MINIMUM SIZE INSTALLED.

## WATER COOLER WIRING DETAIL



## WASH FOUNTAIN WIRING DETAIL



## GENERAL NOTES

- WORK SHALL COMPLY WITH LOCAL, STATE AND NATIONAL ELECTRIC CODES, AMERICANS WITH DISABILITIES ACT.
- THE PANEL SCHEDULES ARE PROVIDED FOR ASSISTANCE ONLY IN UNDERSTANDING THE LOADING ON THE VARIOUS CIRCUITS AND THE CIRCUIT DESIGNATIONS DESIRED FOR THE PANEL DIRECTORIES. THE PANEL SCHEDULES MUST BE BALANCED UPON COMPLETION OF THE PROJECT TO COMPLY WITH CODE. IN ADDITION, THE PANEL SCHEDULES DO NOT IDENTIFY THE TYPES OF CIRCUIT BREAKERS TO BE USED (SUCH AS GFCI, HACR, SHUNT TRIP UNITS, ETC.) NOR DO THE SCHEDULES IDENTIFY CIRCUIT BREAKERS REQUIRED (SUCH AS CB'S FEEDING SURGE PROTECTION UNITS). REFER TO THE REST OF THE DRAWINGS AND THE SPECIFICATIONS FOR ADDITIONAL REQUIREMENTS AND DETAILED INFORMATION.
- COORDINATE EQUIPMENT ELECTRICAL REQUIREMENTS (VOLTAGES, PHASE, LOAD, ETC.) TO AVOID CONFLICTS.
- REFER TO ARCHITECTURAL PLANS AND ELEVATIONS FOR ADDITIONAL ELECTRICAL INFORMATION AND REQUIREMENTS. IN ALL CASES DEVICE MOUNTING HEIGHTS AND LOCATIONS SHALL CONFORM TO THE LATEST AMERICANS WITH DISABILITIES FEDERAL STANDARDS.
- REFER TO THE PLANS FOR ADDITIONAL ELECTRICAL WORK AND REQUIREMENTS. FURNISH, INSTALL AND LOCATE DISCONNECT SWITCHES AT EQUIPMENT/MOTOR LOCATION, AS REQUIRED, AND IN ACCORDANCE WITH CODE. IF THE WORK OF OTHER TRADES CAUSES A LOSS OF CONTINUITY OF THE EXISTING ELECTRICAL DISTRIBUTION, GROUNDING SYSTEM OR CIRCUITRY, IT SHALL BE RECONNECTED OR REPAIRED AT NO ADDITIONAL COST.
- FIELD VERIFY IF EXISTING ASBESTOS WILL BE ENCOUNTERED PRIOR TO STARTING ANY WORK. IF ASBESTOS IS PRESENT, THE OWNER SHALL PROVIDE FOR THE REMOVAL OF ANY MATERIAL CONTAINING ASBESTOS. SEE SPECIFICATIONS FOR FURTHER REQUIREMENTS.
- COORDINATE PHASING OF WORK AND PROVIDE TEMPORARY POWER AND SERVICES AS REQUIRED FOR THE IMPLEMENTATION OF WORK WHILE MAINTAINING SERVICES TO PORTIONS OF BUILDING TO REMAIN OCCUPIED.
- SCHEDULE WORK TO AVOID DOWNTIME AND INCONVENIENCE TO OWNER. OWNER'S EXISTING FACILITY SHALL REMAIN IN OPERATION AT ALL TIMES, INCLUDING FIA AND OTHER SPECIAL SYSTEMS, ELECTRICAL POWER DISTRIBUTION, ETC. REQUIRED SHUTDOWN OF EXISTING FACILITY UTILITIES SHALL BE SCHEDULED WITH OWNER'S OPERATING PERSONNEL.
- LAYOUT IS DIAGRAMMATIC AND INSTALL DEVICES, CONDUIT AND EQUIPMENT TO MEET ACTUAL FIELD CONDITIONS. REVIEW PROJECT SPECIFICATIONS BEFORE STARTING WORK AND SUBMIT COMPLETE SHOP DRAWINGS AS PER SPECIFICATIONS.
- VISIT SITE PRIOR TO BID TO DETERMINE AND VERIFY EXISTING INTERIOR AND EXTERIOR ELECTRICAL SYSTEMS TO VERIFY QUANTITIES AND LOCATIONS OF EXISTING SYSTEMS TO DETERMINE FULL EXTENT OF WORK. INCLUDE THE NECESSARY MODIFICATIONS TO THE EXISTING CONDITIONS (INCLUDING CEILINGS, WALLS, FLOORS, PIPES, CONDUIT, ROOF WORK, ETC.) AS REQUIRED, TO ALLOW FOR PROPER INSTALLATION OF WORK. ADJUST INSTALLATIONS TO MEET FIELD CONDITIONS AS REQUIRED FOR A COMPLETE AND PROPER INSTALLATION. NO EXTRAS WILL BE ALLOWED AFTER BIDDING FOR ANY REWORK OF EXISTING FIELD CONDITIONS TO RESOLVE CONFLICTS OR NOT FULLY UNDERSTANDING THE SCOPE OF THE WORK REQUIRED. EXISTING EQUIPMENT, CONDUIT, PIPING, ETC. SHALL BE REMOVED AS NOTED ON DRAWINGS AND AS REQUIRED TO MEET NEW SCOPE OF WORK.
- HIDDEN CONDITIONS IDENTIFIED THROUGH THE COURSE OF CONSTRUCTION SHALL BE IMMEDIATELY BROUGHT TO ATTENTION IN WRITTEN FORM FOR REVIEW AND DIRECTION. FAILURE TO DO SO SHALL REQUIRE THE CHANGES AND COSTS TO CORRECT SAID HIDDEN CONDITION TO BE COMPLETED AT NO COST. EXISTING EQUIPMENT NOT IDENTIFIED SHALL BE BROUGHT TO ATTENTION FOR REVIEW AS TO WHETHER THE EQUIPMENT SHALL REMAIN AND BE RECONNECTED TO THE NEW SERVICES, BE ABANDONED, ETC.
- REMOVE AND REINSTALL EXISTING CEILINGS NOT BEING REPLACED (INCLUDING LIGHTS, MOTION SENSORS, FIRE ALARM DEVICES AND ANY OTHER ELECTRICAL DEVICES AS REQUIRED.) WHERE NECESSARY TO PERFORM WORK. THIS ALSO INCLUDES EXISTING CEILINGS OF PLASTER, DRYWALL, ETC. COORDINATE WORK IN CEILING SPACE SO AS TO MINIMIZE THE AMOUNT OF CEILINGS WHICH MUST BE REMOVED AND REINSTALLED. REVIEW THE ENTIRE SET OF CONTRACT DOCUMENTS IN ORDER TO FULLY UNDERSTAND AND INCLUDE CEILING WORK NECESSARY FOR WORK ON THE PROJECT. WHEN THE WORK IS COMPLETED IN THE SPACE, REINSTALL OR PATCH EXISTING CEILINGS, REINSTALL DEVICES AND EQUIPMENT AND REPAIR DAMAGES AS REQUIRED TO COMPLETELY MATCH EXISTING CONDITIONS. REPAIR OR REPLACE ANY DAMAGE CAUSED TO EXISTING CEILING AREAS.
- REMOVE EXISTING CONSTRUCTION AS REQUIRED AT EXISTING WALLS, FLOORS, PIPE CHASES, SURFACES, FINISHES, ETC. WHICH ARE AFFECTED. REPAIR EXISTING SURFACES AFFECTED, TO MATCH EXISTING SURFACE OF EQUAL OR BETTER QUALITY TO THE SATISFACTION OF THE OWNER'S REPRESENTATIVE.
- COORDINATE NEW INSTALLATIONS WITH EXISTING SYSTEMS. RELOCATE EXISTING LIGHTING, CONDUIT, EQUIPMENT, ETC., AS NECESSARY FOR NEW INSTALLATIONS.
- PROVIDE NEW PANEL DIRECTORIES IN EXISTING MODIFIED PANELBOARDS AND NEW PANELBOARDS TO CORRECTLY IDENTIFY EXISTING AND NEW LOADS. FINAL DIRECTORIES SHALL BE TYPE WRITTEN.
- EXISTING LIGHTING FIXTURES, ELECTRICAL DEVICES, CONDUIT, ETC., SHALL BE REMOVED AS NOTED ON DRAWINGS AND AS REQUIRED TO MEET NEW SCOPE OF WORK. EXISTING ELECTRICAL EQUIPMENT SHALL REMAIN PROPERTY OF THE OWNER AND SHALL BE PROPERLY STORED ON SITE, OR DESIGNATED TO BE ABANDONED AND REMOVED FROM SITE AS DIRECTED BY OWNER.
- PERFORM CUTTING AND PATCHING OF EXISTING FLOOR SLABS AND WALLS AS REQUIRED FOR THE INSTALLATION OF ELECTRICAL SYSTEMS.
- EXISTING ELECTRICAL DEVICES (RECEPTACLES, SWITCHES, OUTLET BOXES, CONDUIT, ETC.) WITHIN WALLS TO BE REMOVED SHALL BE DISCONNECTED COMPLETELY, REMOVE AND EXTEND EXISTING CIRCUITRY, ELECTRICAL FEEDERS AND GROUNDING SYSTEMS AS REQUIRED TO MAINTAIN CIRCUIT. FEEDER AND GROUNDING SYSTEM INTEGRITY FOR ALL REMAINING DEVICES/EQUIPMENT. VERIFY EXACT CONDITIONS AND REQUIREMENTS IN FIELD.
- NEW CIRCUIT BREAKERS, FUSES AND SWITCHES ARE TO BE ADDED TO EXISTING PANELBOARDS, SWITCHBOARDS, ETC. THEY SHALL BE OF THE SAME MANUFACTURER AND DESIGN AS THE EXISTING BREAKERS OR SWITCHES IF NOT OBSOLETE AND SHALL BE OF THE SIZES AS INDICATED. REARRANGE CIRCUIT BREAKERS WITHIN THE EXISTING EQUIPMENT TO ACCOMMODATE THE NEW CIRCUIT BREAKERS OR SWITCHES. BRANCH CIRCUIT NUMBERS ASSIGNED TO EXISTING PANELBOARDS ARE ARBITRARY AND ARE INTENDED TO INDICATE BRANCH CIRCUIT REQUIREMENTS ONLY. ACTUAL PANEL NUMBER ASSIGNMENTS FOR DESIGNATED BRANCH CIRCUITS SHALL BE ADJUSTED TO MEET FIELD CONDITIONS. PROVIDE ADDITIONAL BUS, BUS EXTENSION, BOLTS AND HARDWARE, ENCLOSURE MODIFICATIONS, DIRECTORY MODIFICATIONS, ETC., AS REQUIRED TO ACCOMPLISH THE WORK.
- VERIFY CEILING STYLES/FRAMES AND TYPES BEFORE ORDERING FIXTURES AND CEILING MOUNTED DEVICES. PROVIDE APPROPRIATE STYLES/FRAMES AS REQUIRED TO MATCH CEILING STYLE AND TYPES.
- COORDINATE LIGHTING LAYOUTS WITH CEILING REGISTERS, GRILLES, DIFFUSERS, SPRINKLER HEADS AND CEILING GRID (SEE ARCHITECTURAL REFLECTED CEILING PLAN.) VERIFY LOCATION WITH OWNER'S REPRESENTATIVE IN FIELD PRIOR TO INSTALLATION.
- PROVIDE PLENUM RATED LIGHT FIXTURES IN PLENUM CEILING AREAS WHERE REQUIRED BY LOCAL OR NATIONAL CODES.
- SOME CEILING SPACES ARE RETURN AIR PLENUMS. EXAMINE PLENUM BEFORE CEILING IS INSTALLED (OR REPLACED) AND SEAL ALL OPENINGS AROUND CONDUIT, CABLE, ETC. PROVIDE PLENUM RATED CABLE (UNLESS IN CONDUIT), DEVICES AND EQUIPMENT PER CODE.
- THE MINIMUM DISTANCE BETWEEN SMOKE OR HEAT DETECTORS AND CEILING MOUNTED SUPPLY DIFFUSERS SHALL BE A MINIMUM OF 4 FEET AND WALL MOUNTED DIFFUSERS SHALL BE 10 FEET.
- WHERE INDICATED ON THE DRAWINGS IN UNFINISHED SPACES, RUN EXPOSED RACEWAYS PARALLEL WITH OR AT RIGHT ANGLES TO WALL.
- NO RACEWAYS SHALL BE INSTALLED WITHIN 6" OF STEAM, HOT WATER PIPES OR SIMILAR HEAT PRODUCING APPLIANCES.
- PROVIDE PULL WIRE IN EACH RACEWAY IN WHICH WIRING IS NOT INSTALLED.
- COVERS OF JUNCTION OR PULL BOXES SHALL BE ACCESSIBLE AND IDENTIFIED PER SPECIFICATIONS. FIRE ALARM JUNCTION BOXES SHALL BE PAINTED RED. JUNCTION OR PULL BOXES AND THE LIKE SHALL BE INDEPENDENTLY SUPPORTED TO BUILDING STRUCTURE WITH NO WEIGHT BEARING ON RACEWAYS.
- WIRE COLOR CODING SHALL BE COORDINATED THROUGHOUT THE ENTIRE PROJECT/BUILDING FOR NEW AND EXISTING SYSTEMS.
- IF MORE THAN THREE (3) PHASE (UNGROUND) CONDUCTORS ARE RUN IN THE SAME RACEWAY, CONDUCTOR AMPACITY SHALL BE DERATED IN ACCORDANCE WITH NEC ARTICLE 310.
- CONDUIT, LIGHTING, EQUIPMENT, ETC. SHALL NOT BE SUPPORTED FROM THE BOTTOM CHORD OF ENGINEERED JOISTS WITHOUT WRITTEN APPROVAL FROM THE STRUCTURAL ENGINEER. CONDUITS ROUTED THROUGH AREAS WITH NO CEILING, SHALL BE ROUTED WITHIN THE WEBBING OF THE JOISTS AND SHALL NOT BE ROUTED BELOW THE BOTTOM CHORD OF THE JOIST.
- SMOKE OR HEAT DETECTORS SHALL BE SURFACE MOUNTED TO CEILING, ROOF DECK MATERIALS, ETC. IN LIEU OF MOUNTING TO BOTTOM CHORD OF ENGINEERED JOIST OR ANY OTHER COMPONENTS NOT AN INTEGRAL PART OF THE HORIZONTAL CEILING.
- VERIFY EXISTING AND NEW MECHANICAL, ELECTRICAL, FIRE PROTECTION SYSTEMS AND MEDICAL GAS SERVICES PRIOR TO START OF NEW CONSTRUCTION. COORDINATE AND ADJUST NEW WORK AS REQUIRED TO AVOID CONFLICTS WITH EXISTING SERVICES AND NEW SERVICES PROVIDED.
- PROVIDE NECESSARY ROOFING COMPONENTS COMPATIBLE WITH EXISTING ROOFING SYSTEMS TO PROVIDE A WEATHERTIGHT INSTALLATION FOR THE ROOF PENETRATIONS AND ABANDONED HOLES FROM REMOVED ITEMS. PATCH ROOF OPENINGS FOR REMOVED PIPE PENETRATIONS, WITH RIGID ROOF INSULATION AND ROOF DECK MATERIAL FROM BELOW ROOF TO MATCH EXISTING ADJACENT MATERIALS. PROPERLY STRIP ROOFING MEMBRANE, ETC. AS REQUIRED, TO MATCH EXISTING ROOF SYSTEM WITH PROPER AND COMPATIBLE MATERIALS. PROVIDE A COMPLETE AND PROPER WEATHERTIGHT CONDITION.

## INTERIOR LIGHTING LUMINAIRE SCHEDULE

TAG	SYMBOL	DESCRIPTION	MANUFACTURER SERIES OR CATALOG NUMBER	VOLTAGE/BALLAST	LAMPS/CROSS SECTION	MOUNTING	REMARKS
AA		2'x4' LED FLAT PANEL FIXTURE	LITHONIA #CFX-2x4-3000LM-80CRI-40K-SWL-MIN10 OR APPROVED EQUAL	120/277 VOLT 0-10V DIM	LED 4000 K MIN 3000 LM	RECESSED LAY-IN	-
AA1		2'x4' LED FLAT PANEL FIXTURE	LITHONIA #CFX-2x4-4000LM-80CRI-40K-SWL-MIN10 OR APPROVED EQUAL	120/277 VOLT 0-10V DIM	LED 4000 K MIN 4000 LM	RECESSED LAY-IN	-
AA2		2'x4' LED FLAT PANEL FIXTURE	LITHONIA #CFX-2x4-6000LM-80CRI-40K-SWL-MIN10 OR APPROVED EQUAL	120/277 VOLT 0-10V DIM	LED 4000 K MIN 6000 LM	RECESSED LAY-IN	-
AB		2'x2' LED FLAT PANEL FIXTURE	LITHONIA #CFX-2x2-1500LM-80CRI-40K-SWL-MIN10 OR APPROVED EQUAL	120/277 VOLT 0-10V DIM	LED 4000 K MIN 1500 LM	RECESSED LAY-IN	-
CA		4' LED DOWNLIGHT FIXTURE	LITHONIA #LDN-4L02-40K-L04-WR-MVOLT OR APPROVED EQUAL	120/277 VOLT 0-10V DIM	LED 4000 K MIN 4000 LM	RECESSED LAY-IN	-
PA		4' LED STRIP FIXTURE	LITHONIA #CLX-L48-4000LM-SEF-XX-L-LENS-XX-MVOLT-80CRI OR APPROVED EQUAL	120/277 VOLT 0-10V DIM	LED 4000 K MIN 4000 LM	RECESSED LAY-IN	-
PW		4' LED SURFACE WRAP FIXTURE	LITHONIA #BLWP4-40L-ADP-MVOLT-EZ1-LP40 OR APPROVED EQUAL	120/277 VOLT 0-10V DIM	LED 4000 K MIN 4000 LM	SURFACE MOUNT	-
PV		4' LED SURFACE VAPORITITE FIXTURE	LITHONIA #FEM-8000LM-XX-XX-MVOLT-GZ10-35K-80CRI OR APPROVED EQUAL	120/277 VOLT 0-10V DIM	LED 4000 K MIN 8000 LM	SURFACE MOUNT	-
WA		3' LED SURFACE MOUNT FIXTURE	LITHONIA #SHW-LP-3FT-MSL3-90CRI-40K-6000LM-80CRI-40K-1600LMF-XX-SCT-MIN102-FL-DC-MVOLT-WHTT-1E10W-LCP-ZT OR APPROVED EQUAL	120/277 VOLT 0-10V DIM	LED 4000 K MIN 4000 LM	WALL MOUNT	-
EM		FIXTURE ON EMERGENCY CIRCUIT WITH 90 MINUTE, HIGH OUTPUT (MIN 1400LM) BATTERY UNIT OR INVERTER	FIXTURES LESS THAN 10000 LM; BODINE FACTORY INSTALLED BATTERY OR, AT CONTRACTOR'S DISCRETION, MYERS LV SERIES INVERTER (SIZE AND QUANTITY AS REQUIRED)	120/277 VOLT	-	IN FIXTURE/REMOTE	PROVIDE TEST SWITCH AND CHARGING INDICATOR



**GIBRALTAR**  
DESIGN

ARCHITECTURE - ENGINEERING - INTERIOR DESIGN



PROJECT:

**FRAZEE  
ELEMENTARY  
SCHOOL -  
RENOVATIONS  
AND RELATED  
WORK**

FOR:  
FAYETTE COUNTY SCHOOLS  
CORPORATION  
CONNERSVILLE, INDIANA

100%  
CONSTRUCTION  
DOCUMENTS

**GIBRALTAR DESIGN**

9102 N. Meridian St., Ste. 300  
Indianapolis, IN 46260  
Homepage: www.GibraltarDesign.com  
Email: info@GibraltarDesign.com  
Phone 317.580.5777 Fax 317.580.5778

PROJECT

23-152

DATE

05/15/24

COORDINATED BY

BK

DRAWN BY

Bok

CHECKED BY

DJ

COPYRIGHT NOTICE: THE CONCEPT, DESIGN, PLANS, DETAILS, ETC. SHOWN ON THIS DOCUMENT ARE THE PROPERTY OF GIBRALTAR DESIGN AND ARE SUBJECT TO THE TERMS AND CONDITIONS OF THE WRITTEN CONSENT OF GIBRALTAR DESIGN. THE OWNER MAY RETAIN COPIES FOR INFORMATION AND REFERENCE IN CONNECTION ONLY WITH THIS PROJECT.

REVISIONS

MARK	DATE	ISSUED FOR
AD-01	06/05/24	ADDENDUM 1

REVISIONS

MARK DATE ISSUED FOR

AD-01 06/05/24 ADDENDUM 1

REVISIONS

MARK DATE ISSUED FOR

AD-01 06/05/24 ADDENDUM 1

REVISIONS

MARK DATE ISSUED FOR

AD-01 06/05/24 ADDENDUM 1

REVISIONS

MARK DATE ISSUED FOR

AD-01 06/05/24 ADDENDUM 1

REVISIONS

MARK DATE ISSUED FOR

AD-01 06/05/24 ADDENDUM 1

REVISIONS

MARK DATE ISSUED FOR

AD-01 06/05/24 ADDENDUM 1

REVISIONS

MARK DATE ISSUED FOR

AD-01 06/05/24 ADDENDUM 1

REVISIONS

MARK DATE ISSUED FOR

AD-01 06/05/24 ADDENDUM 1

REVISIONS

MARK DATE ISSUED FOR

AD-01 06/05/24 ADDENDUM 1

REVISIONS

MARK DATE ISSUED FOR

AD-01 06/05/24 ADDENDUM 1

REVISIONS

MARK DATE ISSUED FOR

AD-01 06/05/24 ADDENDUM 1

REVISIONS

MARK DATE ISSUED FOR

AD-01 06/05/24 ADDENDUM 1

REVISIONS

MARK DATE ISSUED FOR

AD-01 06/05/24 ADDENDUM 1

REVISIONS

MARK DATE ISSUED FOR

AD-01 06/05/24 ADDENDUM 1

REVISIONS

MARK DATE ISSUED FOR

AD-01 06/05/24 ADDENDUM 1

REVISIONS

MARK DATE ISSUED FOR

AD-01 06/05/24 ADDENDUM 1

REVISIONS

MARK DATE ISSUED FOR

AD-01 06/05/24 ADDENDUM 1

REVISIONS

MARK DATE ISSUED FOR

AD-01 06/05/24 ADDENDUM 1

REVISIONS

MARK DATE ISSUED FOR

AD-01 06/05/24 ADDENDUM 1

REVISIONS

MARK DATE ISSUED FOR

AD-01 06/05/24 ADDENDUM 1

REVISIONS

MARK DATE ISSUED FOR

AD-01 06/05/24 ADDENDUM 1

REVISIONS

MARK DATE ISSUED FOR

AD-01 06/05/24 ADDENDUM 1

REVISIONS

MARK DATE ISSUED FOR

AD-01 06/05/24 ADDENDUM 1

REVISIONS

MARK DATE ISSUED FOR

AD-01 06/05/24 ADDENDUM 1

REVISIONS

MARK DATE ISSUED FOR

AD-01 06/05/24 ADDENDUM 1

REVISIONS

MARK DATE ISSUED FOR

AD-01 06/05/24 ADDENDUM 1

REVISIONS

MARK DATE ISSUED FOR

AD-01 06/05/24 ADDENDUM 1

REVISIONS

MARK DATE ISSUED FOR

AD-01 06/05/24 ADDENDUM 1

REVISIONS

MARK DATE ISSUED FOR

AD-01 06/05/24 ADDENDUM 1

REVISIONS

MARK DATE ISSUED FOR

AD-01 06/05/24 ADDENDUM 1

REVISIONS

MARK DATE ISSUED FOR

AD-01 06/05/24 ADDENDUM 1

REVISIONS

MARK DATE ISSUED FOR

AD-01 06/05/24 ADDENDUM 1

REVISIONS

MARK DATE ISSUED FOR

AD-01 06/05/24 ADDENDUM 1

REVISIONS

MARK DATE ISSUED FOR

AD-01 06/05/24 ADDENDUM 1

REVISIONS

MARK DATE ISSUED FOR

AD-01 06/05/24 ADDENDUM 1

REVISIONS

MARK DATE ISSUED FOR

AD-01 06/05/24 ADDENDUM 1

REVISIONS

MARK DATE ISSUED FOR

AD-01 06/05/24 ADDENDUM 1

REVISIONS

MARK DATE ISSUED FOR

AD-01 06/05/24 ADDENDUM 1

REVISIONS

MARK DATE ISSUED FOR

AD-01 06/05/24 ADDENDUM 1

REVISIONS

MARK DATE ISSUED FOR

AD-01 06/05/24 ADDENDUM 1

REVISIONS

MARK DATE ISSUED FOR

AD-01 06/05/24



























### MECHANICAL EQUIPMENT CONNECTION SCHEDULE

TAG	DESCRIPTION	LOAD					MOCP	VOLT	PHASE	PANEL	CKT. NO.	FUSED SWITCH	FEEDER			STARTER BY:	LOCATION	REMARKS
		WATTS	HP	MCA	FLA	AMPS							C	MC	EC			
C-1	GRADE MOUNTED AIR-COOLED CHILLER	264898	-	319	-	-	350	480	3	MDP2	4	350A/3P	4 #500KCMIL & 1 #3 GRD	12"	X	-	-	
RT-1	ROOF MOUNTED POOL HVAC UNIT - DX COOLING / GAS HEATING	100148	-	120.6	-	-	125	480	3	EX	EX	200A/3P	EX	2"	X	-	REUSE EXISTING CONNECTIONS FROM PREVIOUS ROOFTOP UNIT	
RT-1A	ROOF MOUNTED POOL HVAC UNIT - DX COOLING / GAS HEATING - ALTERNATE	111274	-	134	-	-	150	480	3	EX	EX	200A/3P	EX	2"	X	-	REUSE EXISTING CONNECTIONS FROM PREVIOUS ROOFTOP UNIT	
FC-1	SUSPENDED HORIZONTAL FAN COIL UNIT - DX COOLING / HOT WATER HEATING	318	-	2.65	-	-	15	120	1	CJ	55	20A/2P	2 #12 & 1 #12 GRD	3/4"	X	-	-	
CU-1	ROOF MOUNTED AIR-COOLED CONDENSING UNIT	2454.4	-	11.8	-	-	20	208	1	CJ	37-39	20A/2P	3 #12 & 1 #12 GRD	3/4"	X	-	-	
PTAC-1	ELECTRIC HEAT/COOL PTAC - ALTERNATE	1040	-	-	-	5	-	208	1	CJ	33-35	20A/2P	3 #12 & 1 #12 GRD	3/4"	X	-	-	
UH-1	SUSPENDED HOT WATER UNIT HEATER	216	-	1.8	-	-	15	120	1	CJ	21	20A/1P	2 #12 & 1 #12 GRD	3/4"	X	-	-	
UH-2	SUSPENDED HOT WATER UNIT HEATER	216	-	1.8	-	-	15	120	1	CJ	23	20A/1P	2 #12 & 1 #12 GRD	3/4"	X	-	-	
UH-3	SUSPENDED HOT WATER UNIT HEATER	216	-	1.8	-	-	15	120	1	CJ	25	20A/1P	2 #12 & 1 #12 GRD	3/4"	X	-	-	
GEF-1	INLINE GENERAL EXHAUST FAN (STORAGE C-006)	696	0.25	-	-	-	-	120	1	CJ	27	20A/1P	2 #12 & 1 #12 GRD	3/4"	-	X	-	
GEF-2	INLINE GENERAL EXHAUST FAN (STORAGE C-004)	696	1/4	-	-	-	-	120	1	CJ	29	20A/1P	2 #12 & 1 #12 GRD	3/4"	-	X	-	
GEF-3	INLINE GENERAL EXHAUST FAN (FILTRATION ROOM C-001)	199.2	1/15	-	-	-	-	120	1	CJ	31	20A/1P	2 #12 & 1 #12 GRD	3/4"	-	X	-	
WH-1	WATER HEATER	16	-	-	-	-	-	120	1	CJ	52	20A/1P	2 #12 & 1 #12 GRD	3/4"	X	-	-	
DBP-1	DOMESTIC BOOSTER PUMP	17438.4	(2) 15	-	-	-	-	480	3	1H1	2-4-6	60A/3P	4 #4 & 1 #10 GRD	1"	-	-	-	
CP-1	DOMESTIC HW RECIRCULATING PUMP	-	1/40	-	-	-	-	115	1	1L1	1	20A/1P	2 #12 & 1 #12 GRD	3/4"	-	-	-	
CP-2	DOMESTIC HW RECIRCULATING PUMP	-	1/6	-	-	-	-	115	1	1L1	3	20A/1P	2 #12 & 1 #12 GRD	3/4"	-	-	-	
DWS-1,2,3	DOMESTIC WATER SOFTENER	-	-	-	-	-	-	120	1	1L1	2	20A/1P	2 #12 & 1 #12 GRD	3/4"	-	-	-	

### FIXTURE GENERAL NOTES

- INTERIOR FIXTURES, EXTERIOR FIXTURES AND POLE FINISHES AND COLORS TO BE SELECTED BY ARCHITECT. THE ARCHITECT MAY, AT THEIR DISCRETION, CHOOSE A CUSTOM COLOR AT NO ADDITIONAL CHARGE.
- PENDANT FIXTURES SPECIFIED ON THIS PROJECT SHALL BE CAREFULLY COORDINATED WITH CONTRACT DOCUMENTS AND FIXTURE MANUFACTURER AS EACH PENDANT FIXTURE IS A CUSTOM MANUFACTURED FIXTURE. PROVIDE PENDANT EMERGENCY SECTIONS AND EMERGENCY CIRCUITS AS SHOWN. COORDINATE WITH FIXTURE MANUFACTURER AND PROVIDE ADDITIONAL ACCESSORIES FOR A COMPLETE AND PROPER INSTALLATION. PROVIDE PROPER FIXTURE LENGTH, FEEDS, SINGLE AND DUAL CIRCUITING AND SUSPENSION LENGTH AS SHOWN ON DRAWINGS. PROVIDE FABRICATION DRAWINGS FOR REVIEW AS PART OF THE SHOP DRAWING SUBMITTAL PROCESS.
- LED FIXTURES (LESS THAN 10000 LUMENS) SHALL BE PROVIDED WITH FACTORY INSTALLED INTEGRAL EMERGENCY BATTERY UNITS BATTERY UNITS SHALL PROVIDE A MINIMUM OF 1400 LUMENS.
- FIXTURES THAT CANNOT BE PROVIDED WITH EMERGENCY BALLASTS OR FIXTURES WITH GREATER THAN 10000 LUMENS SHALL BE PROVIDED WITH EMERGENCY INVERTER (MYERS #LV SERIES OR APPROVED EQUAL) WITH SUITABLE CAPACITY TO POWER FIXTURE FOR A MINIMUM OF 90 MINUTES PER CODE. VERIFY SIZING AND REQUIREMENTS WITH CONTRACT DOCUMENTS PRIOR TO ORDERING.
- SHADED FIXTURES SHALL HAVE AN EMERGENCY SOURCE OF POWER AS SPECIFIED.
- FIXTURES WITH EMERGENCY BATTERIES SHALL BE PROVIDED WITH CONSTANT HOT SENSING WIRE SO THAT FIXTURE CAN BE SWITCHED ON AND OFF WITHOUT ACTIVATING EMERGENCY BALLAST. UPON LOSS OF POWER, THE FIXTURE SHALL BE ILLUMINATED FOR A MINIMUM OF 90 MINUTES REGARDLESS OF THE LIGHT SWITCH POSITION. PROVIDE TEST SWITCH AND CHARGING INDICATOR FOR EMERGENCY BATTERY AS SPECIFIED.
- CAREFULLY COORDINATE MOUNTING REQUIREMENTS FOR FIXTURES WITH CONTRACT DOCUMENTS AND FIXTURE MANUFACTURER. PROVIDE APPROPRIATE MOUNTING FRAMES FOR LAY-IN OR GYPSUM CEILINGS. VERIFY CEILING REQUIREMENTS WITH FINAL ARCHITECTURAL REFLECTED CEILING PLAN.
- COMPLETE PHOTOMETRICS OF THE INTERIOR AND EXTERIOR LIGHTING SHALL BE SUBMITTED ALONG WITH THE LIGHTING SHOP DRAWINGS FOR REVIEW. FOR FINISHED SPACES, 80/90/20 REFLECTANCES SHALL BE UTILIZED. FOR UNFINISHED SPACES 50/50/20 REFLECTANCE SHALL BE UTILIZED. THE LLD VALUE THAT SHALL BE UTILIZED FOR LED IS .81. EXTERIOR CALCULATIONS SHALL ACCOUNT FOR HOUSE SIDE SHIELDING AND SHALL CONFORM TO LOCAL REQUIREMENTS.
- VERIFY FIXTURE MOUNTING HEIGHTS WITH ARCHITECT PRIOR TO ORDERING.
- VERIFY VOLTAGES OF EXISTING LIGHTING CIRCUITRY PRIOR TO ORDERING FIXTURES.
- FOR FIXTURES INSTALLED IN CASEWORK, VERIFY FIXTURE FIT WITH CASEWORK SHOP DRAWINGS PRIOR TO ORDERING.
- PROVIDE CUSTOM ANTI-SWAY BRACING FOR PENDANT TO ELIMINATE PENDANT MOVEMENT DUE TO AIR MOVEMENT OR ENVIRONMENTAL CAUSES.
- COORDINATE LOCATIONS OF INTERIOR AND EXTERIOR LIGHTING FIXTURES WITH FINAL ARCHITECTURAL DRAWINGS. FIXTURES THAT ARE NOT INSTALLED IN THE CORRECT LOCATION SHALL BE RELOCATED AND REINSTALLED IN THE CORRECT LOCATION AT NO ADDITIONAL CHARGE.
- FIXTURES SHALL BE PROVIDED WITH ESCUTCHEON PLATES AS REQUIRED TO COVER EXISTING HOLES FROM REMOVED FIXTURES. CANOPY CEILING AROUND NEW FIXTURES SHALL BE REFINISHED TO MATCH EXISTING SURROUNDING CANOPY CEILING SURFACES.
- FIXTURES SHALL BE CAREFULLY COORDINATED WITH MANUFACTURER TO DELIVER THE SPECIFIED PRODUCT IN SUFFICIENT TIME TO MEET PROJECT DEADLINES. EQUIPMENT DELIVERY LEAD TIME SHALL NOT BE HELD AS A VALID REASON FOR REQUESTING LUMINAIRE SUBSTITUTION UNLESS LUMINAIRE LEAD TIME FROM SPECIFIED MANUFACTURER IS IN EXCESS OF 14 WEEKS. IT SHALL BE THE SOLE RESPONSIBILITY OF THE ELECTRICAL CONTRACTOR TO DETERMINE NECESSARY EQUIPMENT LEAD TIMES, DELIVER SUBMITTALS FOR REVIEW IN A TIMELY FASHION, AND PLACE ORDERS ACCORDINGLY TO ENSURE TIMELY DELIVERY.
- EVALUATION OF APPROVED EQUALS SHALL BE AT THE SOLE DISCRETION OF THE ARCHITECT AND ENGINEER. IF THE PRODUCT SUBMITTED DURING THE REVIEW PROCESS IS NOT JUDGED AS AN EQUAL BY THE REVIEWING ENGINEER, THE CONTRACTOR SHALL PROVIDE THE PRODUCT SPECIFIED.
- LIGHT FIXTURE TRANSFORMERS SHALL BE INTEGRAL STEP DOWN TRANSFORMERS PER NEC 210.6C. IF AN INTEGRAL STEP DOWN TRANSFORMER IS NOT AVAILABLE, PROVIDE A 120V CONNECTION FOR LIGHT FIXTURES AND ADDITIONAL CONTROL DEVICES AS REQUIRED TO PROPERLY CONTROL FIXTURES ALONG WITH OTHER 277VOLT LIGHTING IN ROOM. VERIFY CONDITIONS AND REQUIREMENTS, COMPLETE AS REQUIRED.
- CAREFULLY COORDINATE VOLTAGES OF FIXTURES PRIOR TO ORDERING FIXTURES.
- CAREFULLY VERIFY COLOR TEMPERATURE OF FIXTURES WITH ARCHITECT PRIOR TO ORDERING.



ARCHITECTURE ENGINEERING INTERIOR DESIGN

PROJECT: CONNERSVILLE HS NATATORIUM RENOVATION AND RELATED WORK

FOR: FAYETTE COUNTY SCHOOL CORPORATION  
CONNERSVILLE, INDIANA

100% CONSTRUCTION DOCUMENTS

NO. 10302590  
STATE OF INDIANA  
REGISTERED PROFESSIONAL ENGINEER

COPYRIGHT NOTICE:  
THE CONCEPTS, DESIGN, DRAWINGS, DETAILS, ETC. SHOWN ON THIS DOCUMENT ARE THE PROPERTY OF GIBRALTAR DESIGN AND ARE NOT TO BE REPRODUCED OR USED FOR ANY OTHER PROJECT WITHOUT THE EXPRESS WRITTEN CONSENT OF GIBRALTAR DESIGN. THE OWNER MAY OBTAIN COPIES FOR INFORMATION AND REFERENCE BY CONNECTION ONLY WITH THIS PROJECT.

REVISIONS  
MARK DATE ISSUED FOR  
AD-01 06/05/2024 ADDENDUM 1

DRAWING ELECTRICAL SCHEDULES

PROJECT CONNERSVILLE HS NATATORIUM RENOVATION AND RELATED WORK

SHEET E-501C

### CJ

LOCATION: ELECTRIC C104 VOLTS: 120/208 Wye  
SUPPLY FROM: 48KVA PHASES: 3  
MOUNTING: SURFACE MAINS TYPE: MCB 125A  
ENCLOSURE: NEMA 1 MAIN RATING: 225A  
A.I.C. RATING: 10K BUSSING: COPPER

CKT	CIRCUIT DESCRIPTION	LEG.	TRIP	POLES	A	B	C	A	B	C	POLES	TRIP	LEG.	CIRCUIT DESCRIPTION	CKT
1	EX CIRCUITS	20 A	1	500			500				1	20 A	EX CIRCUITS	2	
3	EX CIRCUITS	20 A	1		500			500			1	20 A	EX CIRCUITS	4	
5	EX CIRCUITS	20 A	1			500			500		1	20 A	EX CIRCUITS	6	
7	EX CIRCUITS	20 A	1	500			500				1	20 A	EX CIRCUITS	8	
9	EX CIRCUITS	20 A	1		500			500			1	20 A	EX CIRCUITS	10	
11	EX CIRCUITS	20 A	1			500			500		1	20 A	EX CIRCUITS	12	
13	EX CIRCUITS	20 A	1	500			500				1	20 A	EX CIRCUITS	14	
15	EX CIRCUITS	20 A	1		500			500			1	20 A	EX CIRCUITS	16	
17	EX CIRCUITS	20 A	1			500			500		1	20 A	EX CIRCUITS	18	
19	EX CIRCUITS	20 A	1	500			500				1	20 A	EX CIRCUITS	20	
21	UH-1	20 A	1		216			800			1	20 A	REC POOL	22	
23	UH-2	20 A	1			216			400		1	20 A	REC POOL	24	
25	UH-3	20 A	1	216			400				1	20 A	REC POOL	26	
27	GEF-1	20 A	1		696			400			1	20 A	REC OFFICE 107	28	
29	GEF-2	20 A	1		696			200			1	20 A	REC SOUND SYSTEM	30	
31	GEF-3	20 A	1	199			200				1	20 A	REC SOUND SYSTEM	32	
33	PTAC-1	20 A	2		520			1200			1	20 A	SCOREBOARD	34	
35		20 A	1			520			1200		1	20 A	SCOREBOARD	36	
37	AC-1	20 A	2	1864			200				1	20 A	REC DVC	38	
39		20 A	1		1864			200			1	20 A	REC ROOF TOP	40	
41		20 A	1			834			800		1	20 A	REC STORAGE C005	42	
43	UVA1	30 A	3	834			400				1	20 A	REC STORAGE C005	44	
45		20 A	1		834			1200			1	20 A	EXISTING CHEMICAL CONTROLLER	46	
47	CPA1	20 A	1		1800			800			1	20 A	REC HEAD TABLE ALTERNATE	48	
49	APA1	20 A	1	1800			400				1	20 A	REC HEAD TABLE ALTERNATE	50	
51	AFA1	25 A	1		2400			800			1	20 A	WH-1	52	
53	ACO1	20 A	1			1800					1	20 A	SPACE	54	
55	FC-1	20 A	1	318							1	--	SPACE	56	
57	SPACE	--	1								1	--	SPACE	58	
59	SPACE	--	1								1	--	SPACE	60	

LEGEND:  
GC = PROVIDE GFI CIRCUIT BREAKER  
ST = PROVIDE SHUNT TRIP BREAKER  
LO = PROVIDE LOCKABLE DEVICE

PANEL TOTALS  
TOTAL CONNECTED LOAD PHASE A: 10631 VA  
TOTAL CONNECTED LOAD PHASE B: 13930 VA  
TOTAL CONNECTED LOAD PHASE C: 12266 VA  
TOTAL CONNECTED LOAD: 36827 VA  
TOTAL CONNECTED AMPS: 102 A

REFER TO SPECIFICATIONS FOR ADDITIONAL INFORMATION

### INTERIOR/EXTERIOR LIGHTING LUMINAIRE SCHEDULE

AA	DESCRIPTION	MANUFACTURER / MODEL	VOLT	WATTAGE	RECESSED LAY-IN
AA	2X4' LED DIRECT/INDIRECT FIXTURE	LITHONIA #BLT4-48L-ADP-LP840-X-X METALUX #24ARS-L3C3-UNV OR APPROVED EQUAL	120/277 VOLT 0-10V DIM	4000 K MIN 4800 LM 35W	-
AB	1X4' LED DIRECT/INDIRECT FIXTURE	LITHONIA #BLT4-48L-ADP-LP840-X-X OR APPROVED EQUAL	120/277 VOLT 0-10V DIM	4000 K MIN 4800 LM 35W	-
TA	RAIL MOUNTED INDIRECT NATATORIUM FIXTURE	SPI LIGHTING #LRU12394-169W-40K-NAT OR APPROVED EQUAL	120/277 VOLT 0-10V DIM	4000 K MIN 9225 LM 64W	RAIL MTD 22 AFF
TB	4' PENDANT INDIRECT NATATORIUM FIXTURE	LUX DYNAMICS #WAVEP-4-840-U10-WS4-DEF4	120/277 VOLT 0-10V DIM	4000 K MIN 14310 LM 861W	PENDANT MTD 22 AFF
TC	PENDANT INDIRECT NATATORIUM FIXTURE	VISIONAIRE #BHB-6-SW-90L-4K-VOLT @ 20' MTG HT.(INDIRECT) 18 DEGREE TILT OR APPROVED EQUAL	120/277 VOLT 0-10V DIM	4000 K MIN 9000 LM 62W	PENDANT MTD 22 AFF
EA	EXTERIOR WALL MOUNTED FIXTURE	LITHONIA #WVST-LED-P2-40K-VF-MVOLT-XX OR APPROVED EQUAL	120/277 VOLT 0-10V DIM	4000 K MIN 3000 LM 28W	WALL MTD
PA	48" LED LINEAR DIRECT/INDIRECT STRIP FIXTURE	LITHONIA #CLX4-48-4000LM-SEF-MVOLT-GZ1-XX-38K-80CRI OR APPROVED EQUAL	120/277 VOLT 0-10V DIM	4000 K MIN 4000 LM 32 W	SURFACE
PB	48" LED LINEAR DIRECT/INDIRECT STRIP FIXTURE	HUBBELL CHALMIT #R3107/ULE OR APPROVED EQUAL	120/277 VOLT 0-10V DIM	4000 K MIN 6600 LM 44 W	PENDANT
PC	24" LED LINEAR DIRECT/INDIRECT STRIP FIXTURE	LITHONIA #CLX4-24-4000LM-SEF-MVOLT-GZ1-XX-40K-80CRI OR APPROVED EQUAL	120/277 VOLT 0-10V DIM	4000 K MIN 4000 LM 32 W	SURFACE
CA	6" DIAMETER LED SQUARE DOWNLIGHT	CELEO #CLO-35-80L-25-4K7-UNV-SQ-XX OR APPROVED EQUAL	120/277 VOLT 0-10V DIM	4000 K MIN 3200 LM 26 W	RECESSED
XA	EXIT SIGN WITH 6" RED LETTERS, POLY CARBONATE BODY, 90 MINUTE NI-CAD BATTERY BACK UP	EXTRONIX #WLTE-W-1-R-EL OR APPROVED EQUAL	MVOLT	LED	CEILING/ WALL -FURNISH WITH ARROWS AS REQ'D BY CODE -COORDINATE FACE QUANTITY WITH PLANS
EM	FIXTURE ON EMERGENCY CIRCUIT WITH 90 MINUTE, HIGH OUTPUT (MIN 1400LM) BATTERY UNIT OR INVERTER		120/277 VOLT		-PROVIDE TEST SWITCH AND CHARGING INDICATOR -INTEGRAL BATTERIES NOT ALLOWED IN FIXTURES WITH GREATER THAN 10000 LUMENS

LOCATION: ELECTRIC C104 VOLTS: 480/277 Wye  
SUPPLY FROM: PANEL PCE PHASES: 3  
MOUNTING: SURFACE MAINS TYPE: MLO  
ENCLOSURE: NEMA 1 MAIN RATING: 225A  
A.I.C. RATING: 10K BUSSING: COPPER

CKT	CIRCUIT DESCRIPTION	LEG.	TRIP	POLES	A	B	C	A	B	C	POLES	TRIP	LEG.	CIRCUIT DESCRIPTION	CKT
1	SPARE	20 A	1	0				2635			1	20 A	POOL LTG	2	
3	SPARE	20 A	1	0				2600			1	20 A	POOL LTG	4	
5	SPARE	20 A	1	0				2600			1	20 A	POOL LTG	6	
7		20 A	1		7474			1300			1	20 A	POOL LTG	8	
9	PA1	60 A	3		7474			20			1	20 A	EXIT SIGNS	10	
11		20 A	1			7474		164			1	20 A	LIGHTING	12	
13		20 A	1		1329			130			1	20 A	EXTERIOR LIGHTING	14	
15	BPA2	20 A	3		1329			40			1	20 A	LOWER LEVEL LIGHTING	16	
17		20 A	1			1329		6000			1	50 A	EMERGENCY LIGHTING INVERTER	18	
19		20 A	1		10831			500			1	20 A	EXTERIOR WALLPACK	20	
21	48KVA TRANSFORMER C-6	70 A	3		11310			500			1	20 A	EXISTING CIRCUIT	22	
23		20 A	1			12296		500			1	20 A	EXISTING CIRCUIT	24	
25	SPARE	20 A	1	0				500			1	20 A	EXISTING CIRCUIT	26	
27	SPARE	20 A	1	0				500			1	20 A	EXISTING CIRCUIT	28	
29	SPARE	20 A	1	0				500			1	20 A	EXISTING CIRCUIT	30	
31	SPACE	--	1	--				500			1	20 A	EXISTING CIRCUIT	32	
33	SPACE	--	1	--				--			1	--	SPACE	34	
35	SPACE	--	1	--				--							



