

D

C

B

A

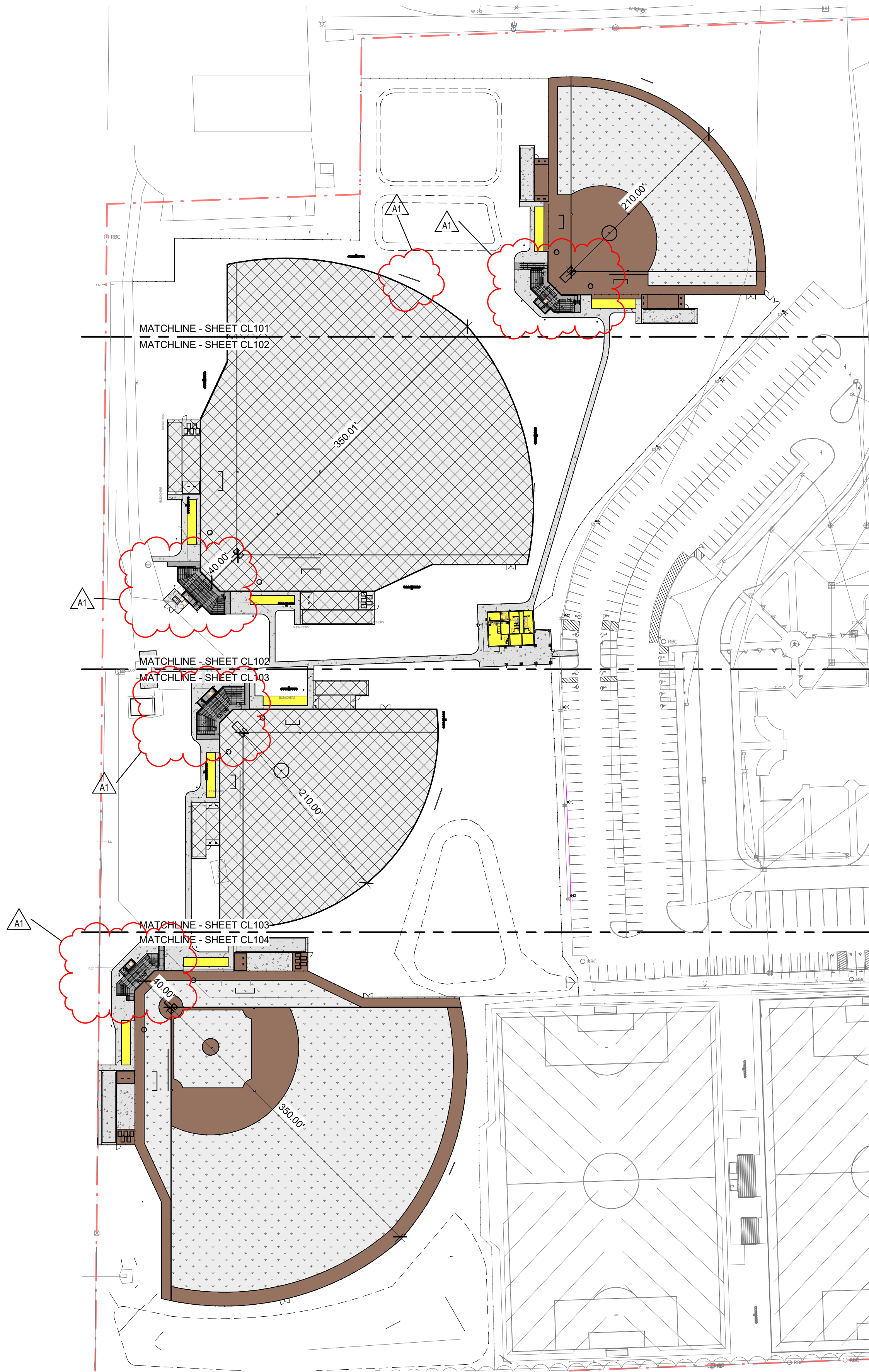
5

4

3

2

1



1 OVERALL LAYOUT PLAN  
1" = 80'-0"

SITE LAYOUT LEGEND

	SYNTHETIC TURF. SEE SPECS AND DETAIL
	NATURAL TURF. SEE SPECS AND DETAIL
	BRICK DUST. SEE SPECS AND DETAIL
	STANDARD CONCRETE PAVING. SEE SPECS AND DETAIL
	HEAVY DUTY CONCRETE PAD FOR BLEACHERS AND PRESS BOXES. SEE DETAIL 4C/CL502
	#55 STONE. SEE DETAIL SHEET
	NEW BUILDING. SEE A-SERIES DRAWINGS.



SCHMIDT  
ASSOCIATES

schmidt-arch.com • 317.263.6226  
415 Massachusetts Ave., Indianapolis, IN 46204  
731 Brent St. #203, Louisville, KY 40204

Project No. 2024-029.HF2  
Project Date 01.07.2025  
Produced SG/JG/RR



These Drawings and Specifications, and all copies thereof are and shall remain the property and copyright of the Architect. They shall be used only with respect to this Project and are not to be used on any other Project or Work without prior written permission from the Architect.

#	Revision	Date
A1	ADDENDUM 1	01.23.2025

4355 E Stop 11 Rd  
Indianapolis, IN 46237



PERRY HOLDER  
FIELDS



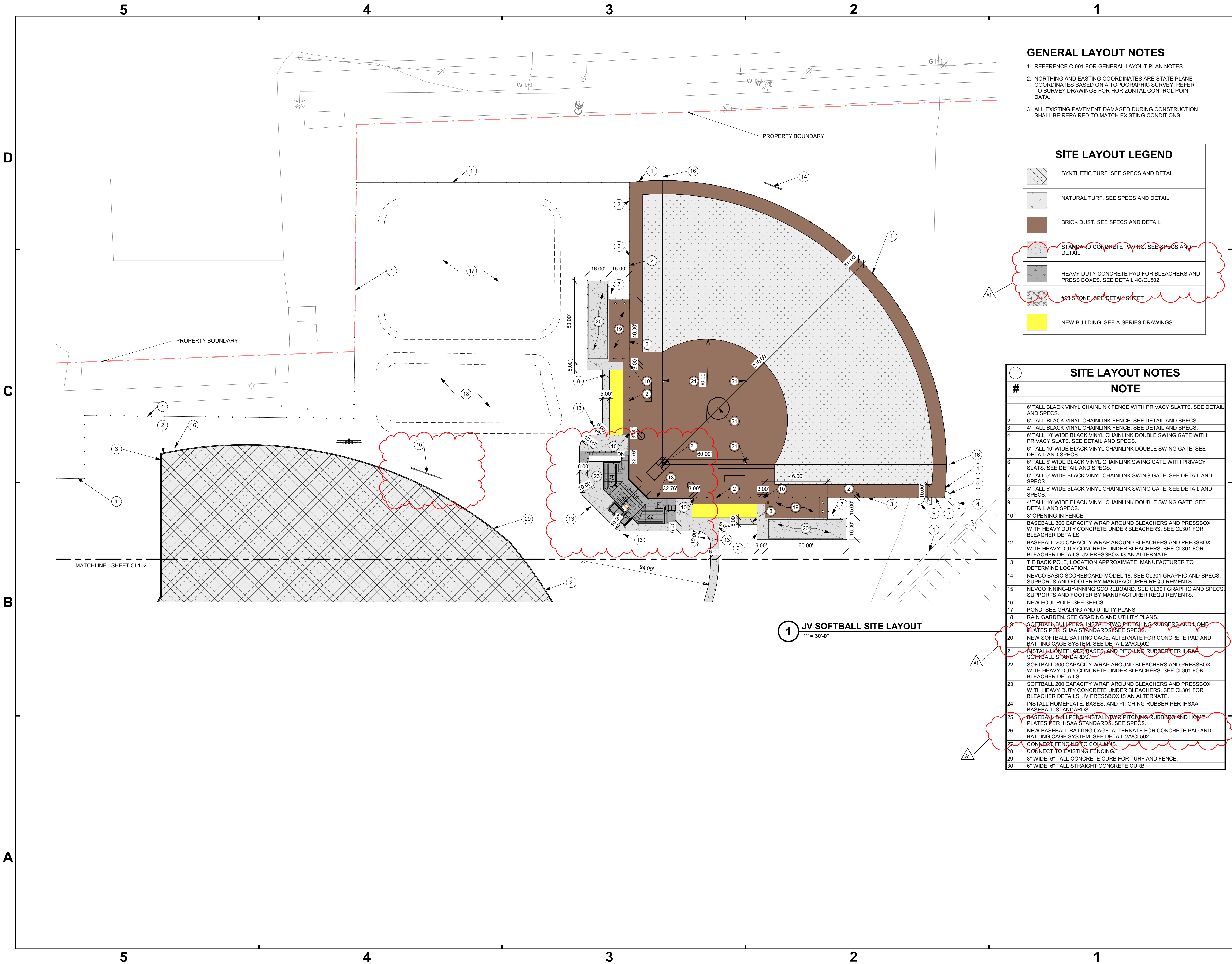
Perry Township  
Schools

HOLDER FIELD  
BASEBALL AND  
SOFTBALL COMPLEX

OVERALL SITE  
LAYOUT PLAN

CL100





GENERAL LAYOUT NOTES

1. REFERENCE C-001 FOR GENERAL LAYOUT PLAN NOTES.
2. NORTHING AND EASTING COORDINATES ARE STATE PLANE COORDINATES BASED ON A TOPOGRAPHIC SURVEY. REFER TO SURVEY DRAWINGS FOR HORIZONTAL CONTROL POINT DATA.
3. ALL EXISTING PAVEMENT DAMAGED DURING CONSTRUCTION SHALL BE REPAIRED TO MATCH EXISTING CONDITIONS.

SITE LAYOUT LEGEND

	SYNTHETIC TURF. SEE SPECS AND DETAIL
	NATURAL TURF. SEE SPECS AND DETAIL
	BRICK DUST. SEE SPECS AND DETAIL
	STANDARD CONCRETE PAVING. SEE SPECS AND DETAIL
	HEAVY DUTY CONCRETE PAD FOR BLEACHERS AND PRESS BOXES. SEE DETAIL 4C/CL502
	#63 STONE. SEE DETAIL C-SHEET
	NEW BUILDING. SEE A-SERIES DRAWINGS.

SITE LAYOUT NOTES

#	NOTE
1	6' TALL BLACK VINYL CHAINLINK FENCE WITH PRIVACY SLATTS. SEE DETAIL AND SPECS.
2	6' TALL BLACK VINYL CHAINLINK FENCE. SEE DETAIL AND SPECS.
3	4' TALL BLACK VINYL CHAINLINK FENCE. SEE DETAIL AND SPECS.
4	6' TALL 10' WIDE BLACK VINYL CHAINLINK DOUBLE SWING GATE WITH PRIVACY SLATTS. SEE DETAIL AND SPECS.
5	6' TALL 10' WIDE BLACK VINYL CHAINLINK DOUBLE SWING GATE. SEE DETAIL AND SPECS.
6	6' TALL 5' WIDE BLACK VINYL CHAINLINK SWING GATE WITH PRIVACY SLATTS. SEE DETAIL AND SPECS.
7	6' TALL 5' WIDE BLACK VINYL CHAINLINK SWING GATE. SEE DETAIL AND SPECS.
8	4' TALL 5' WIDE BLACK VINYL CHAINLINK SWING GATE. SEE DETAIL AND SPECS.
9	4' TALL 10' WIDE BLACK VINYL CHAINLINK DOUBLE SWING GATE. SEE DETAIL AND SPECS.
10	3' OPENING IN FENCE.
11	BASEBALL 300 CAPACITY WRAP AROUND BLEACHERS AND PRESSBOX. WITH HEAVY DUTY CONCRETE UNDER BLEACHERS. SEE CL301 FOR BLEACHER DETAILS.
12	BASEBALL 200 CAPACITY WRAP AROUND BLEACHERS AND PRESSBOX. WITH HEAVY DUTY CONCRETE UNDER BLEACHERS. SEE CL301 FOR BLEACHER DETAILS. JV PRESSBOX IS AN ALTERNATE.
13	TIE BACK POLE, LOCATION APPROXIMATE. MANUFACTURER TO DETERMINE LOCATION.
14	NEVCO BASIC SCOREBOARD MODEL 16. SEE CL301 GRAPHIC AND SPECS. SUPPORTS AND FOOTER BY MANUFACTURER REQUIREMENTS.
15	NEVCO INNING-BY-INNING SCOREBOARD. SEE CL301 GRAPHIC AND SPECS. SUPPORTS AND FOOTER BY MANUFACTURER REQUIREMENTS.
16	NEW FOUL POLE. SEE SPECS
17	POND. SEE GRADING AND UTILITY PLANS.
18	RAIN GARDEN. SEE GRADING AND UTILITY PLANS.
19	SOFTBALL BULLPENS. INSTALL TWO PITCHING RUBBERS AND HOME PLATES PER IHSAA STANDARDS. SEE SPECS.
20	NEW SOFTBALL BATTING CAGE. ALTERNATE FOR CONCRETE PAD AND BATTING CAGE SYSTEM. SEE DETAIL 2A/CL502
21	INSTALL HOMEPLATE BASES AND PITCHING RUBBER PER IHSAA STANDARDS.
22	SOFTBALL 300 CAPACITY WRAP AROUND BLEACHERS AND PRESSBOX. WITH HEAVY DUTY CONCRETE UNDER BLEACHERS. SEE CL301 FOR BLEACHER DETAILS.
23	SOFTBALL 200 CAPACITY WRAP AROUND BLEACHERS AND PRESSBOX. WITH HEAVY DUTY CONCRETE UNDER BLEACHERS. SEE CL301 FOR BLEACHER DETAILS. JV PRESSBOX IS AN ALTERNATE.
24	INSTALL HOMEPLATE, BASES, AND PITCHING RUBBER PER IHSAA BASEBALL STANDARDS.
25	BASEBALL BULLPENS. INSTALL TWO PITCHING RUBBERS AND HOME PLATES PER IHSAA STANDARDS. SEE SPECS.
26	NEW BASEBALL BATTING CAGE. ALTERNATE FOR CONCRETE PAD AND BATTING CAGE SYSTEM. SEE DETAIL 2A/CL502
27	CONNECT FENCING TO COLUMNS.
28	CONNECT TO EXISTING FENCING.
29	8" WIDE, 6" TALL CONCRETE CURB FOR TURF AND FENCE.
30	6" WIDE, 6" TALL STRAIGHT CONCRETE CURB

1 JV SOFTBALL SITE LAYOUT  
1" = 30'-0"

**SCHMIDT ASSOCIATES**  
schmidt-arch.com • 317.263.6226  
415 Massachusetts Ave., Indianapolis, IN 46204  
731 Brent St. #203, Louisville, KY 40204

Project No. 2024-029.HF2  
Project Date 01.07.2025  
Produced SG/JG/RR

These Drawings and Specifications, and all copies thereof are and shall remain the property and copyright of the Architect. They shall be used only with respect to this Project and are not to be used on any other Project or Work without prior written permission from the Architect.

#	Revision	Date
A1	ADDENDUM 1	01.23.2025

4355 E Stop 11 Rd  
Indianapolis, IN 46237

**PERRY HOLDER FIELDS**

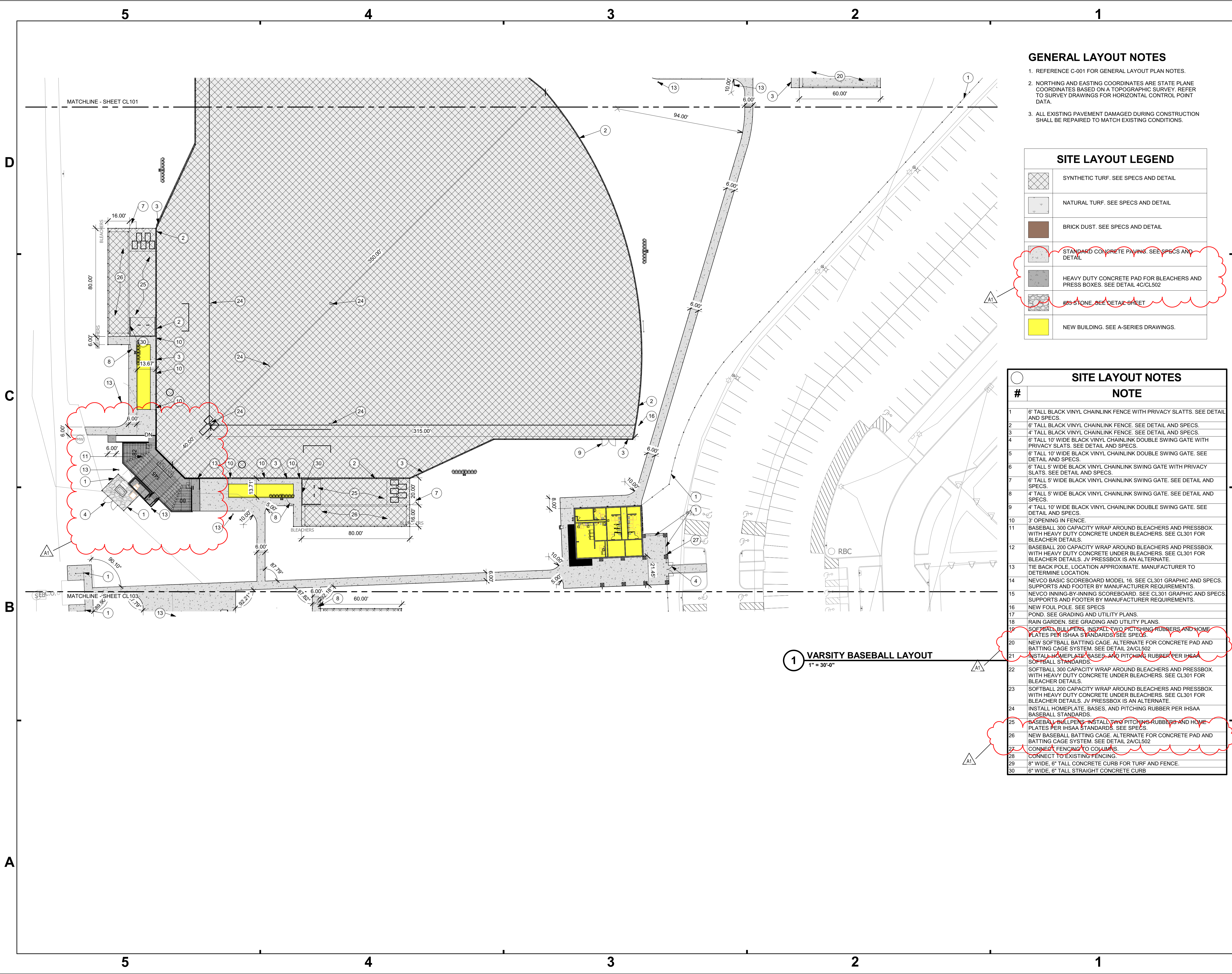
Perry Township Schools

HOLDER FIELD  
BASEBALL AND  
SOFTBALL COMPLEX

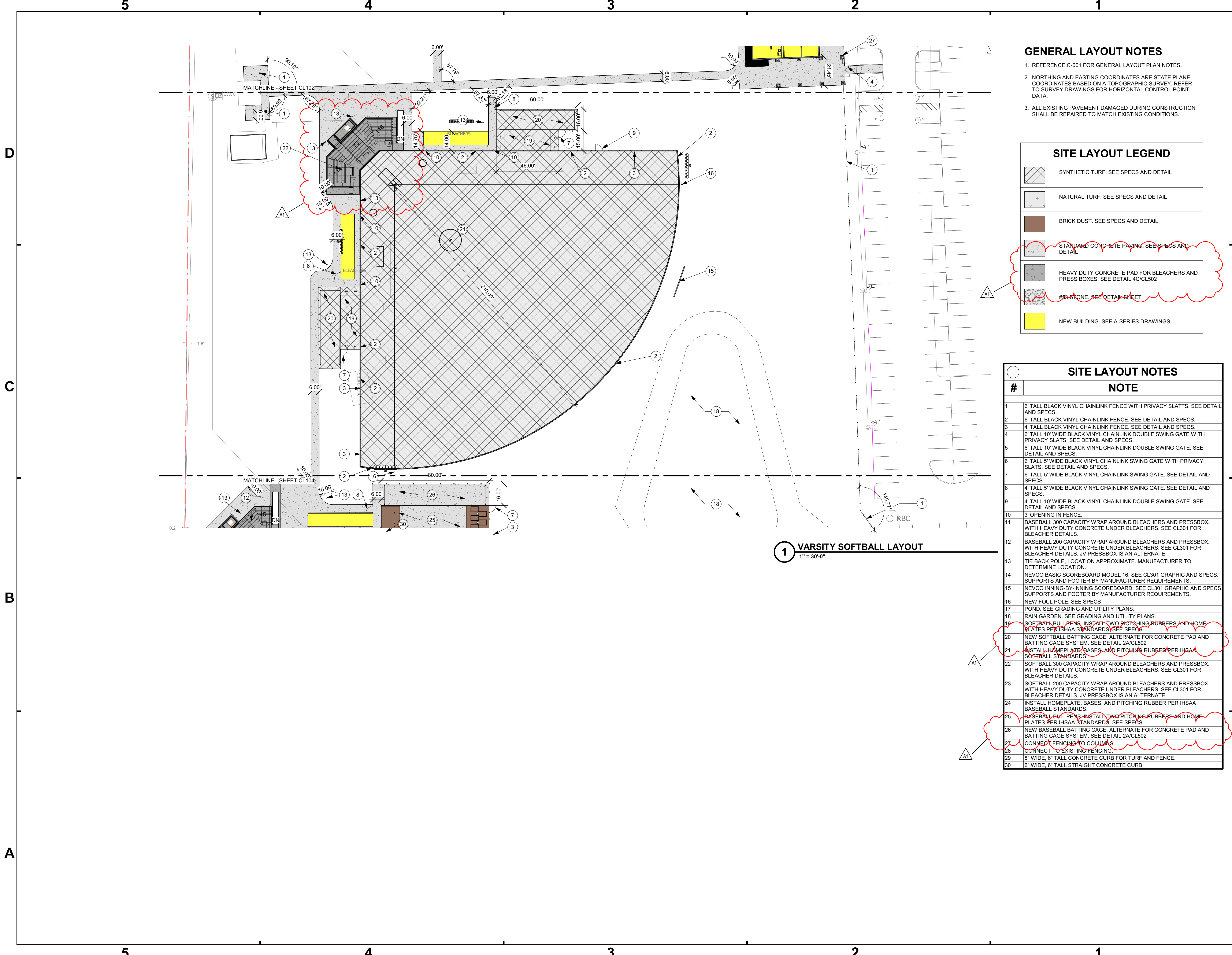
SITE LAYOUT PLAN

CL101









GENERAL LAYOUT NOTES

- REFERENCE C-001 FOR GENERAL LAYOUT PLAN NOTES.
- NORTHING AND EASTING COORDINATES ARE STATE PLANE COORDINATES BASED ON A TOPOGRAPHIC SURVEY. REFER TO SURVEY DRAWINGS FOR HORIZONTAL CONTROL POINT DATA.
- ALL EXISTING PAVEMENT DAMAGED DURING CONSTRUCTION SHALL BE REPAIRED TO MATCH EXISTING CONDITIONS.

SITE LAYOUT LEGEND

	SYNTHETIC TURF. SEE SPECS AND DETAIL.
	NATURAL TURF. SEE SPECS AND DETAIL.
	BRICK DUST. SEE SPECS AND DETAIL.
	STANDARD CONCRETE PAVING. SEE SPECS AND DETAIL.
	HEAVY DUTY CONCRETE PAD FOR BLEACHERS AND PRESS BOXES. SEE DETAIL 4C/CL502.
	#3 FLAGSTONE. SEE DETAIL SHEET.
	NEW BUILDING. SEE A-SERIES DRAWINGS.

SITE LAYOUT NOTES

#	NOTE
1	6" TALL BLACK VINYL CHAINLINK FENCE WITH PRIVACY SLATTS. SEE DETAIL AND SPECS.
2	6" TALL BLACK VINYL CHAINLINK FENCE. SEE DETAIL AND SPECS.
3	4" TALL BLACK VINYL CHAINLINK FENCE. SEE DETAIL AND SPECS.
4	6" TALL 10" WIDE BLACK VINYL CHAINLINK DOUBLE SWING GATE WITH PRIVACY SLATTS. SEE DETAIL AND SPECS.
5	6" TALL 10" WIDE BLACK VINYL CHAINLINK DOUBLE SWING GATE. SEE DETAIL AND SPECS.
6	6" TALL 5" WIDE BLACK VINYL CHAINLINK SWING GATE WITH PRIVACY SLATTS. SEE DETAIL AND SPECS.
7	6" TALL 5" WIDE BLACK VINYL CHAINLINK SWING GATE. SEE DETAIL AND SPECS.
8	4" TALL 5" WIDE BLACK VINYL CHAINLINK SWING GATE. SEE DETAIL AND SPECS.
9	4" TALL 10" WIDE BLACK VINYL CHAINLINK DOUBLE SWING GATE. SEE DETAIL AND SPECS.
10	3" OPENING IN FENCE.
11	BASEBALL 300 CAPACITY WRAP AROUND BLEACHERS AND PRESSBOX. WITH HEAVY DUTY CONCRETE UNDER BLEACHERS. SEE CL301 FOR BLEACHER DETAILS.
12	BASEBALL 200 CAPACITY WRAP AROUND BLEACHERS AND PRESSBOX. WITH HEAVY DUTY CONCRETE UNDER BLEACHERS. SEE CL301 FOR BLEACHER DETAILS. JV PRESSBOX IS AN ALTERNATE.
13	TIE BACK POLE. LOCATION APPROXIMATE. MANUFACTURER TO DETERMINE LOCATION.
14	NEVCO BASIC SCOREBOARD MODEL 16. SEE CL301 GRAPHIC AND SPECS. SUPPORTS AND FOOTER BY MANUFACTURER REQUIREMENTS.
15	NEVCO INNING-BY-INNING SCOREBOARD. SEE CL301 GRAPHIC AND SPECS. SUPPORTS AND FOOTER BY MANUFACTURER REQUIREMENTS.
16	NEW FOUL POLE. SEE SPECS.
17	POND. SEE GRADING AND UTILITY PLANS.
18	RAIN GARDEN. SEE GRADING AND UTILITY PLANS.
19	SOFTBALL BULLPENS. INSTALL TWO PITCHING RUBBERS AND HOME PLATES PER IHSAA STANDARDS. SEE SPECS.
20	NEW SOFTBALL BATTING CAGE. ALTERNATE FOR CONCRETE PAD AND BATTING CAGE SYSTEM. SEE DETAIL 2A/CL502.
21	INSTALL HOMEPLATE, BASES, AND PITCHING RUBBER PER IHSAA SOFTBALL STANDARDS.
22	SOFTBALL 300 CAPACITY WRAP AROUND BLEACHERS AND PRESSBOX. WITH HEAVY DUTY CONCRETE UNDER BLEACHERS. SEE CL301 FOR BLEACHER DETAILS.
23	SOFTBALL 200 CAPACITY WRAP AROUND BLEACHERS AND PRESSBOX. WITH HEAVY DUTY CONCRETE UNDER BLEACHERS. SEE CL301 FOR BLEACHER DETAILS. JV PRESSBOX IS AN ALTERNATE.
24	INSTALL HOMEPLATE, BASES, AND PITCHING RUBBER PER IHSAA BASEBALL STANDARDS.
25	BASEBALL BULLPENS. INSTALL TWO PITCHING RUBBERS AND HOME PLATES PER IHSAA STANDARDS. SEE SPECS.
26	NEW BASEBALL BATTING CAGE. ALTERNATE FOR CONCRETE PAD AND BATTING CAGE SYSTEM. SEE DETAIL 2A/CL502.
27	CONNECT FENCING TO COLUMNS.
28	CONNECT TO EXISTING FENCING.
29	8" WIDE, 6" TALL CONCRETE CURB FOR TURF AND FENCE.
30	6" WIDE, 6" TALL STRAIGHT CONCRETE CURB.

**SCHMIDT ASSOCIATES**  
schmidt-arch.com • 317.263.6226  
415 Massachusetts Ave., Indianapolis, IN 46204  
731 Brent St., #203, Louisville, KY 40204

Project No. 2024-029.HF2  
Project Date 01.07.2025  
Produced SG/JG/RR

These Drawings and Specifications, and all copies thereof are and shall remain the property and copyright of the Architect. They shall be used only with respect to this Project and are not to be used on any other Project or Work without prior written permission from the Architect.

#	Revision	Date
A1	ADDENDUM 1	01.23.2025

4355 E Stop 11 Rd  
Indianapolis, IN 46237

**PERRY HOLDER FIELDS**

Perry Township Schools

HOLDER FIELD  
BASEBALL AND  
SOFTBALL COMPLEX

SITE LAYOUT PLAN

CL103

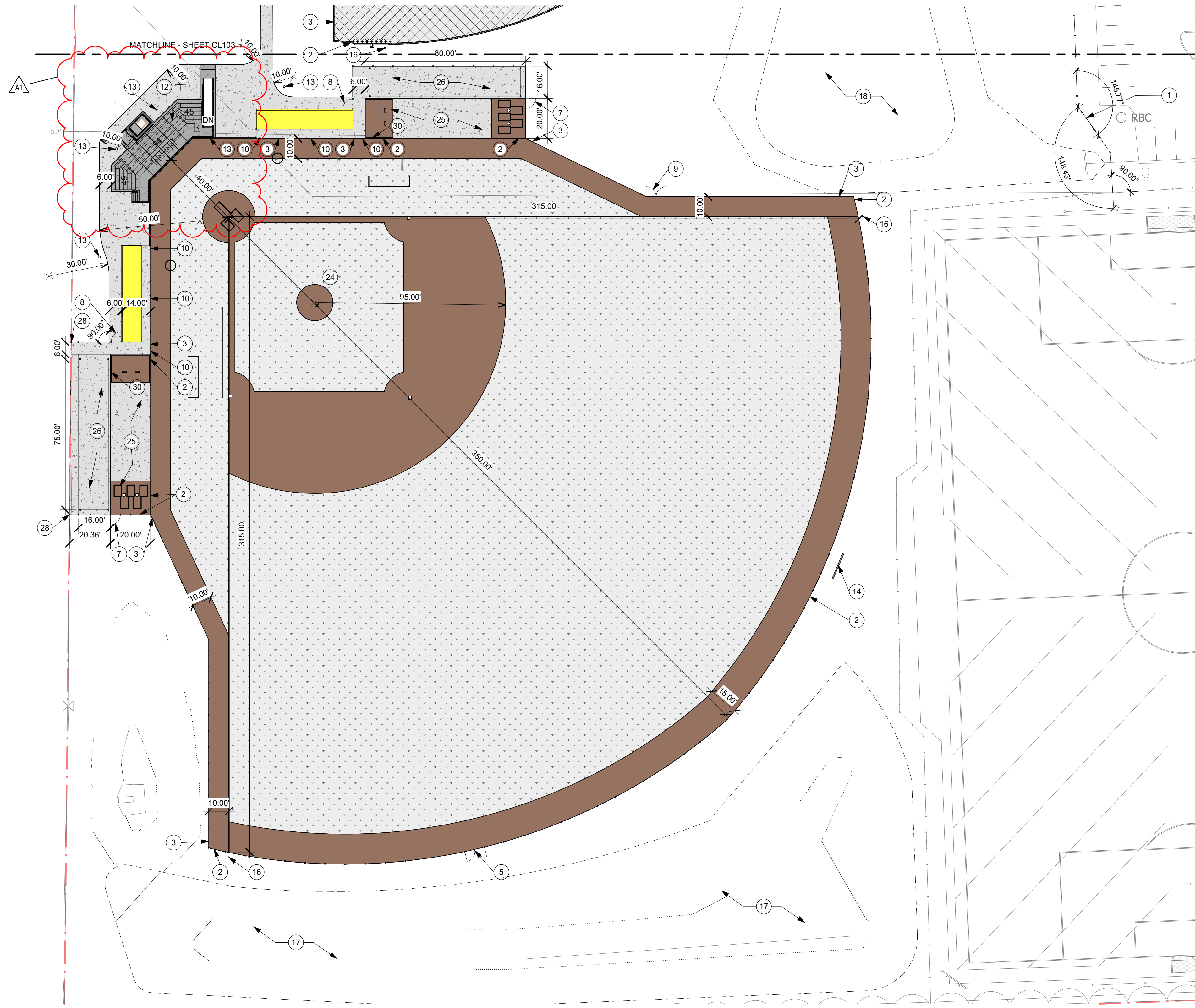


D

C

B

A



1 JV BASEBALL LAYOUT  
1" = 30'-0"

### GENERAL LAYOUT NOTES

1. REFERENCE C-001 FOR GENERAL LAYOUT PLAN NOTES.
2. NORTHING AND EASTING COORDINATES ARE STATE PLANE COORDINATES BASED ON A TOPOGRAPHIC SURVEY. REFER TO SURVEY DRAWINGS FOR HORIZONTAL CONTROL POINT DATA.
3. ALL EXISTING PAVEMENT DAMAGED DURING CONSTRUCTION SHALL BE REPAIRED TO MATCH EXISTING CONDITIONS.

### SITE LAYOUT LEGEND

	SYNTHETIC TURF. SEE SPECS AND DETAIL
	NATURAL TURF. SEE SPECS AND DETAIL
	BRICK DUST. SEE SPECS AND DETAIL
	STANDARD CONCRETE PAVING. SEE SPECS AND DETAIL
	HEAVY DUTY CONCRETE PAD FOR BLEACHERS AND PRESS BOXES. SEE DETAIL 4C/CL502
	#63 STONE. SEE DETAIL C-SHEET
	NEW BUILDING. SEE A-SERIES DRAWINGS.

### SITE LAYOUT NOTES

#	NOTE
1	6' TALL BLACK VINYL CHAINLINK FENCE WITH PRIVACY SLATTS. SEE DETAIL AND SPECS.
2	6' TALL BLACK VINYL CHAINLINK FENCE. SEE DETAIL AND SPECS.
3	4' TALL BLACK VINYL CHAINLINK FENCE. SEE DETAIL AND SPECS.
4	6' TALL 10' WIDE BLACK VINYL CHAINLINK DOUBLE SWING GATE WITH PRIVACY SLATTS. SEE DETAIL AND SPECS.
5	6' TALL 10' WIDE BLACK VINYL CHAINLINK DOUBLE SWING GATE. SEE DETAIL AND SPECS.
6	6' TALL 5' WIDE BLACK VINYL CHAINLINK SWING GATE WITH PRIVACY SLATTS. SEE DETAIL AND SPECS.
7	6' TALL 5' WIDE BLACK VINYL CHAINLINK SWING GATE. SEE DETAIL AND SPECS.
8	4' TALL 5' WIDE BLACK VINYL CHAINLINK SWING GATE. SEE DETAIL AND SPECS.
9	4' TALL 10' WIDE BLACK VINYL CHAINLINK DOUBLE SWING GATE. SEE DETAIL AND SPECS.
10	3' OPENING IN FENCE.
11	BASEBALL 300 CAPACITY WRAP AROUND BLEACHERS AND PRESSBOX. WITH HEAVY DUTY CONCRETE UNDER BLEACHERS. SEE CL301 FOR BLEACHER DETAILS.
12	BASEBALL 200 CAPACITY WRAP AROUND BLEACHERS AND PRESSBOX. WITH HEAVY DUTY CONCRETE UNDER BLEACHERS. SEE CL301 FOR BLEACHER DETAILS. JV PRESSBOX IS AN ALTERNATE.
13	TIE BACK POLE, LOCATION APPROXIMATE. MANUFACTURER TO DETERMINE LOCATION.
14	NEVCO BASIC SCOREBOARD MODEL 16. SEE CL301 GRAPHIC AND SPECS. SUPPORTS AND FOOTER BY MANUFACTURER REQUIREMENTS.
15	NEVCO INNING-BY-INNING SCOREBOARD. SEE CL301 GRAPHIC AND SPECS. SUPPORTS AND FOOTER BY MANUFACTURER REQUIREMENTS.
16	NEW FOUL POLE. SEE SPECS
17	POND. SEE GRADING AND UTILITY PLANS.
18	RAIN GARDEN. SEE GRADING AND UTILITY PLANS.
19	SOFTBALL BULLPENS. INSTALL TWO PITCHING RUBBERS AND HOME PLATES PER IHSAA STANDARDS. SEE SPECS.
20	NEW SOFTBALL BATTING CAGE. ALTERNATE FOR CONCRETE PAD AND BATTING CAGE SYSTEM. SEE DETAIL 2A/CL502
21	INSTALL HOMEPLATE, BASES, AND PITCHING RUBBER PER IHSAA SOFTBALL STANDARDS.
22	SOFTBALL 300 CAPACITY WRAP AROUND BLEACHERS AND PRESSBOX. WITH HEAVY DUTY CONCRETE UNDER BLEACHERS. SEE CL301 FOR BLEACHER DETAILS.
23	SOFTBALL 200 CAPACITY WRAP AROUND BLEACHERS AND PRESSBOX. WITH HEAVY DUTY CONCRETE UNDER BLEACHERS. SEE CL301 FOR BLEACHER DETAILS. JV PRESSBOX IS AN ALTERNATE.
24	INSTALL HOMEPLATE, BASES, AND PITCHING RUBBER PER IHSAA BASEBALL STANDARDS.
25	BASEBALL BULLPENS. INSTALL TWO PITCHING RUBBERS AND HOME PLATES PER IHSAA STANDARDS. SEE SPECS.
26	NEW BASEBALL BATTING CAGE. ALTERNATE FOR CONCRETE PAD AND BATTING CAGE SYSTEM. SEE DETAIL 2A/CL502
27	CONNECT FENCING TO COLUMNS.
28	CONNECT TO EXISTING FENCING.
29	8" WIDE, 6" TALL CONCRETE CURB FOR TURF AND FENCE.
30	6" WIDE, 6" TALL STRAIGHT CONCRETE CURB



**SCHMIDT ASSOCIATES**

schmidt-arch.com • 317.263.6226  
415 Massachusetts Ave., Indianapolis, IN 46204  
731 Brent St. #203, Louisville, KY 40204

Project No. 2024-029.HF2  
Project Date 01.07.2025  
Produced SG/JG/RR

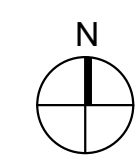


*Kyle C. Miller*

These Drawings and Specifications, and all copies thereof are and shall remain the property and copyright of the Architect. They shall be used only with respect to this Project and are not to be used on any other Project or Work without prior written permission from the Architect.

#	Revision	Date
A1	ADDENDUM 1	01.23.2025

4355 E Stop 11 Rd  
Indianapolis, IN 46237



**PERRY HOLDER FIELDS**



Perry Township  
Schools

HOLDER FIELD  
BASEBALL AND  
SOFTBALL COMPLEX

SITE LAYOUT PLAN

CL104



5

4

3

2

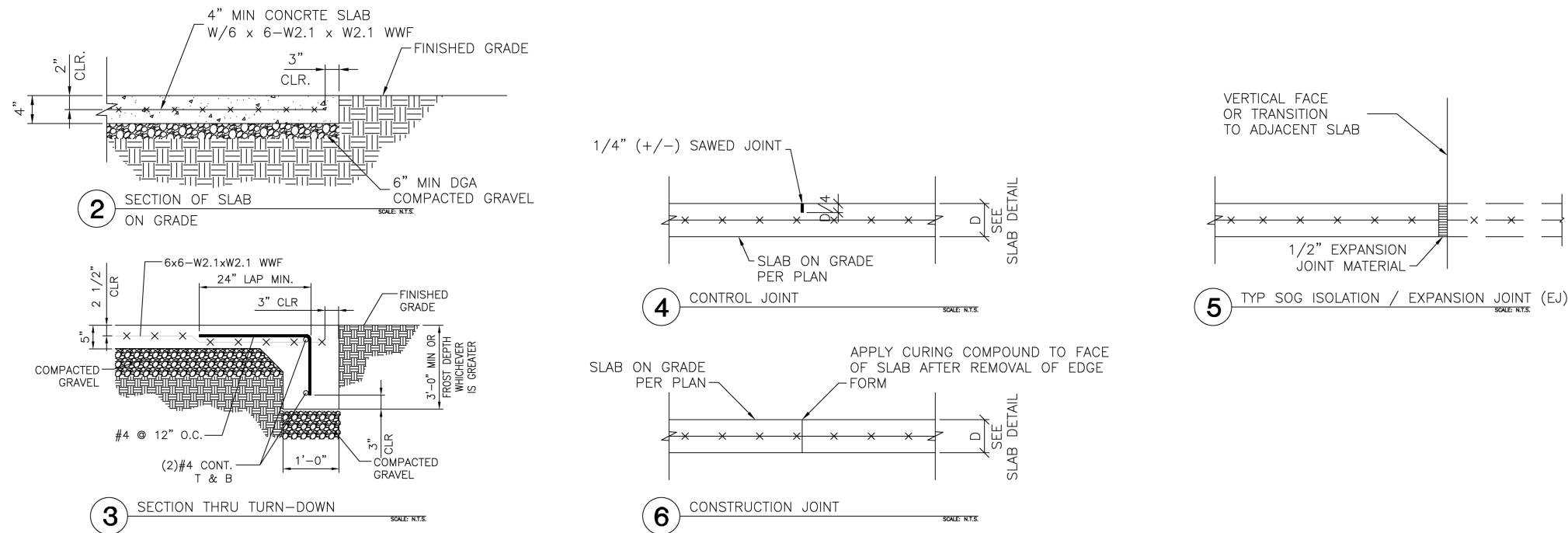
1

D

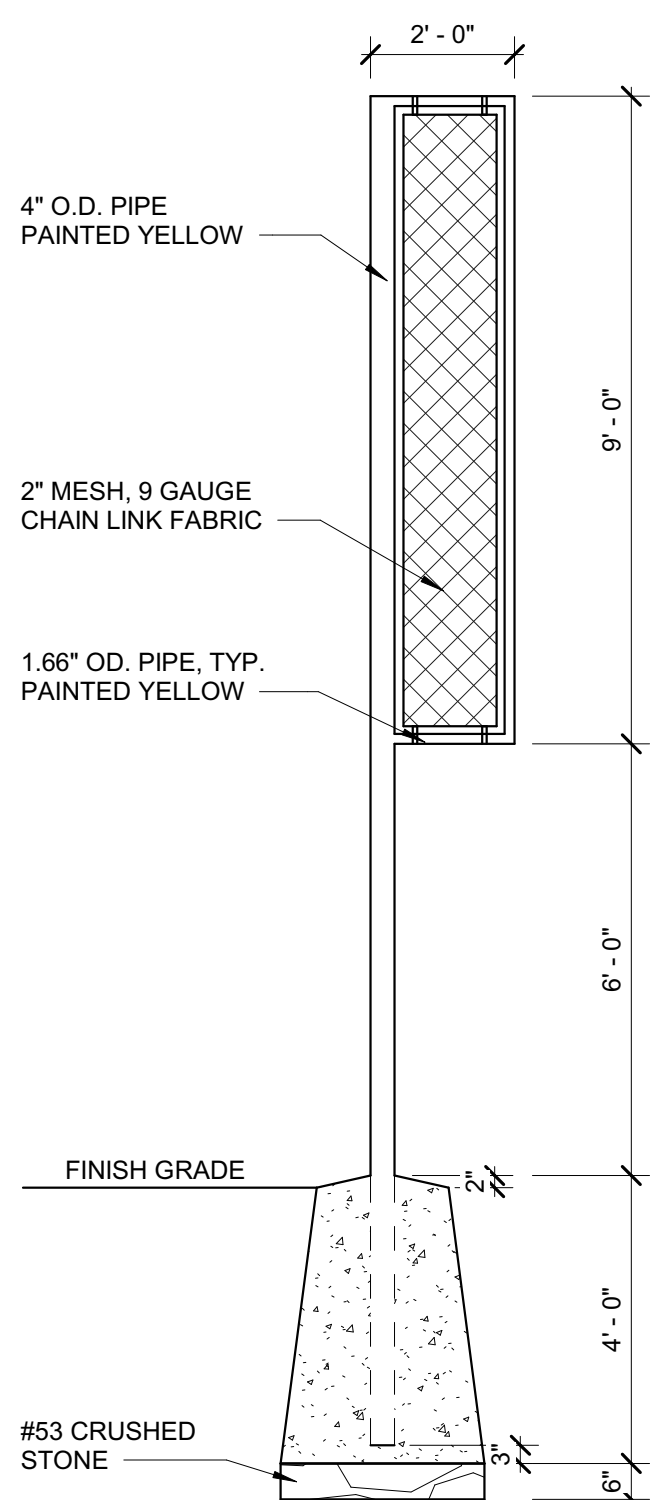
C

B

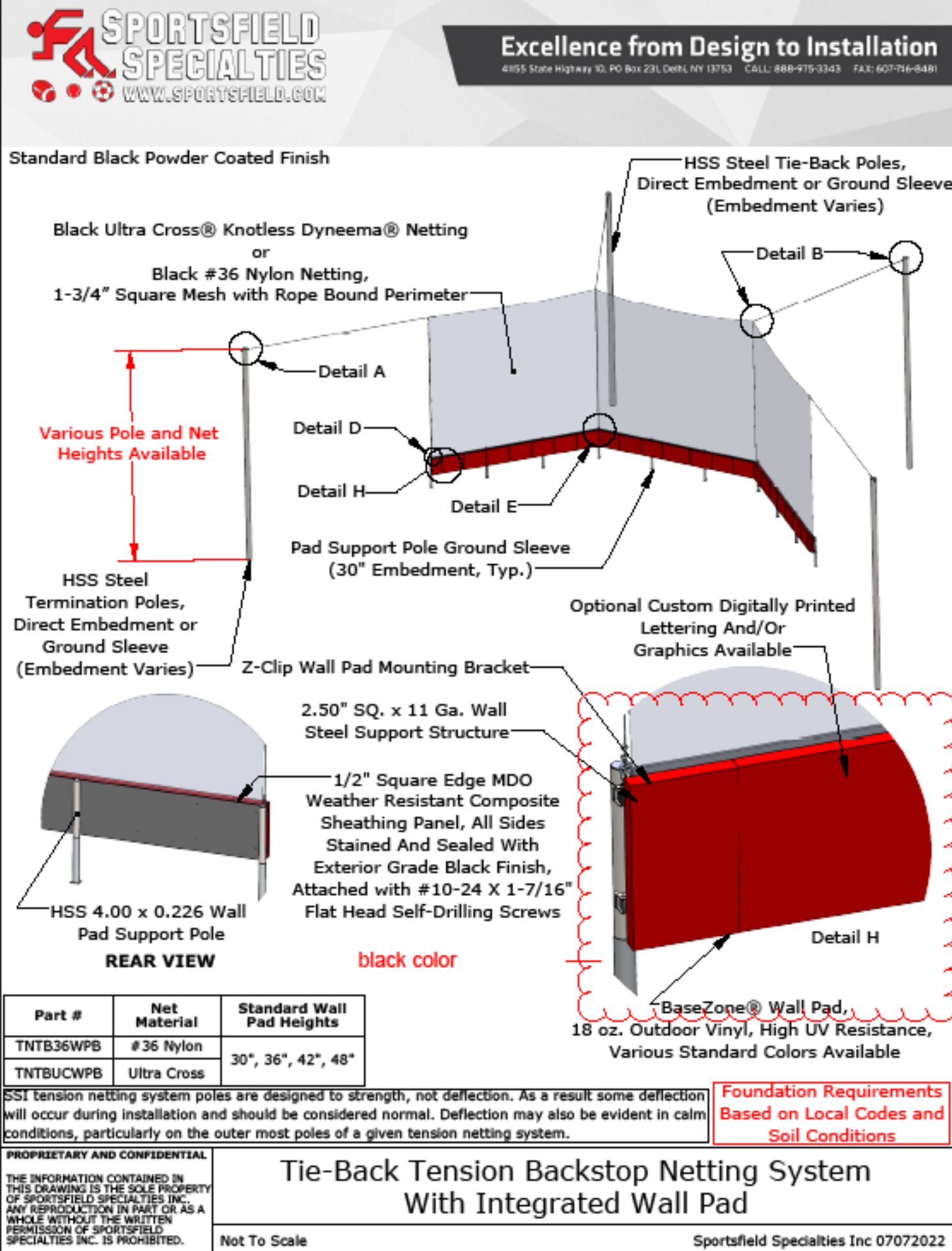
A



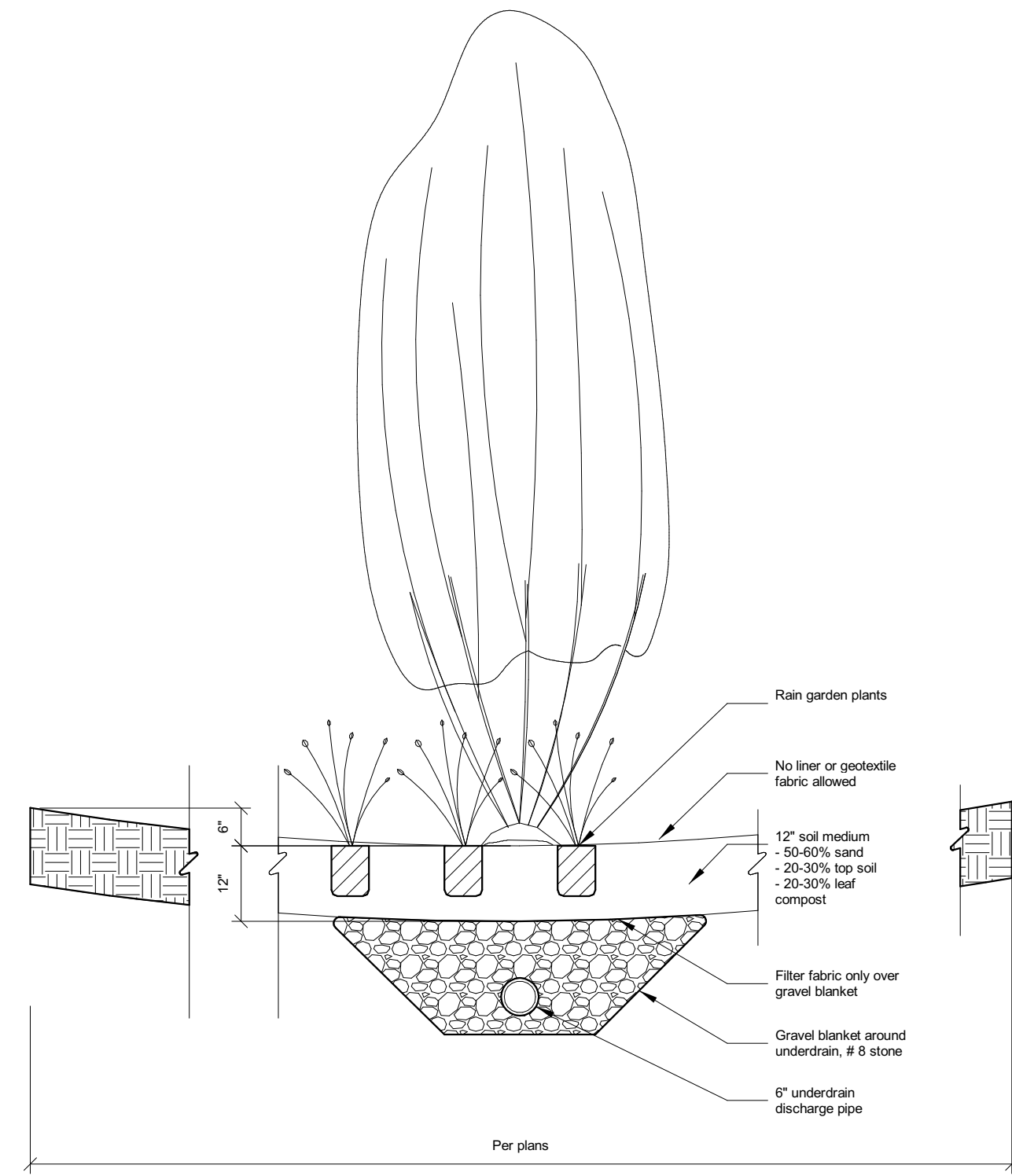
4C CONCRETE- HEAVY DUTY PAD FOR BLEACHERS AND PRESS BOX  
NOT TO SCALE



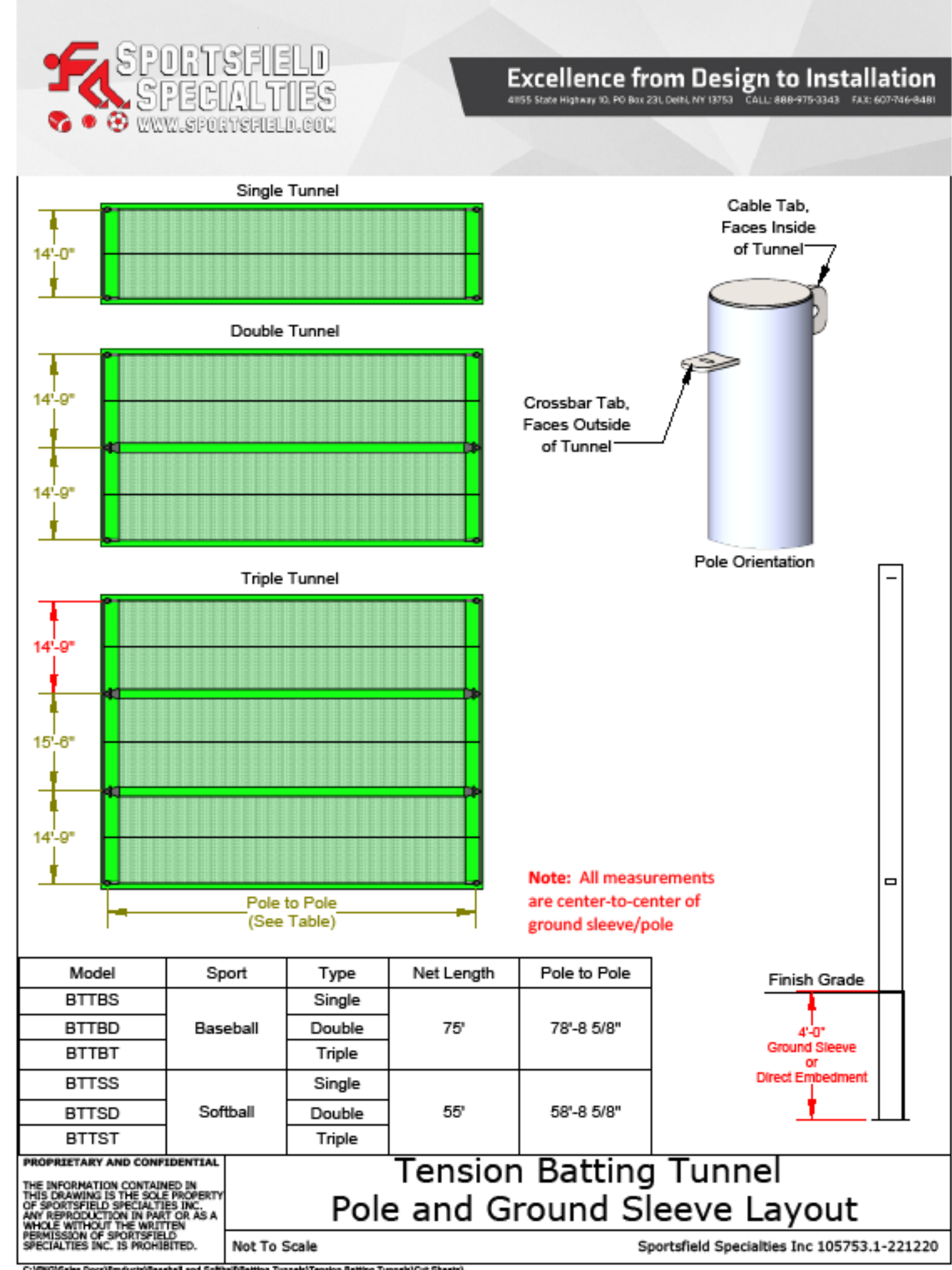
4A FOUL POLE  
3/8" = 1'-0"



3A BACKSTOP  
1 1/2" = 1'-0"



1C RAIN GARDEN  
NOT TO SCALE



2A BATTING CAGE  
1 1/2" = 1'-0"



SCHMIDT  
ASSOCIATES

schmidt-arch.com • 317.263.6226  
415 Massachusetts Ave., Indianapolis, IN 46204  
731 Brent St. #203, Louisville, KY 40204

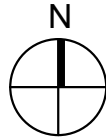
Project No. 2024-029.HF2  
Project Date 01.07.2025  
Produced SG/JG/RR



These Drawings and Specifications, and all copies thereof are and shall remain the property and copyright of the Architect. They shall be used only with respect to this Project and are not to be used on any other Project or Work without prior written permission from the Architect.

#	Revision	Date
A1	ADDENDUM 1	01.23.2025

4355 E Stop 11 Rd  
Indianapolis, IN 46237



PERRY HOLDER  
FIELDS



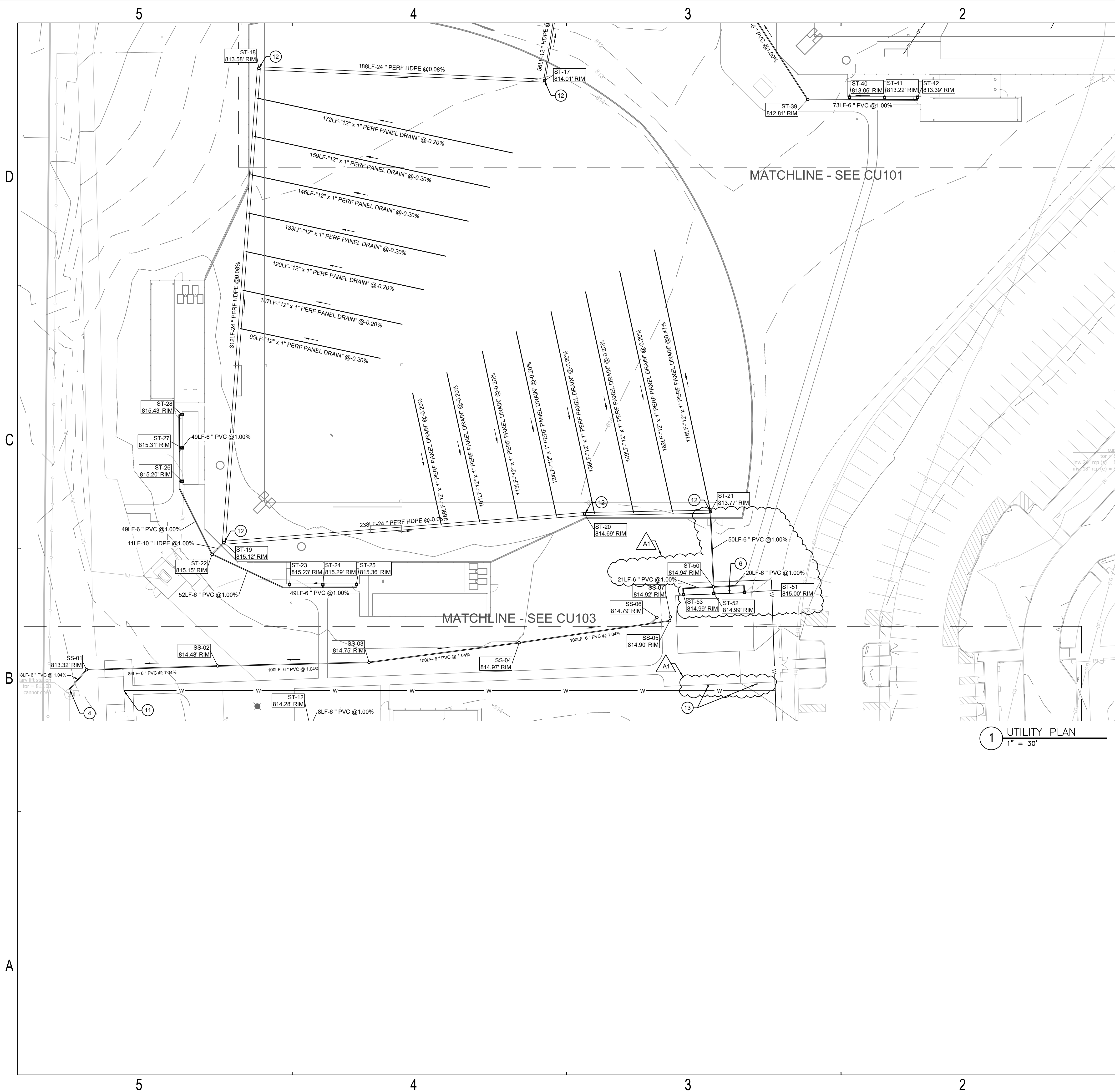
Perry Township  
Schools

HOLDER FIELD  
BASEBALL AND  
SOFTBALL COMPLEX

SITE LAYOUT  
DETAILS

CL502

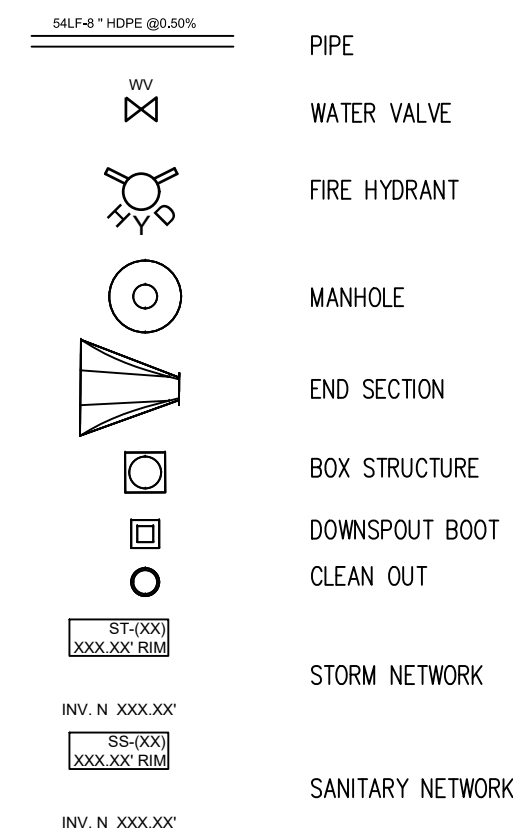




GENERAL UTILITIES NOTES

1. IF THE LOCAL BENCHMARK(S) WILL BE DISTURBED DURING CONSTRUCTION, IT THE CONTRACTOR'S RESPONSIBILITY TO ESTABLISH ADDITIONAL BENCHMARKS AS NEEDED.
2. ALL LIDS, CASTINGS, GRATES, BOXES, AND HATCHES ASSOCIATED WITH EXISTING UTILITY STRUCTURES THAT ARE NOT INDICATED FOR MODIFICATION SHALL BE MAINTAINED AND PROTECTED DURING CONSTRUCTION.
3. COMPACTED GRANULAR BACKFILL IS REQUIRED FOR ALL UTILITY TRENCHES LOCATED UNDER PAVED AREAS. SEE SPECIFICATIONS.
4. PIPE LENGTHS INDICATED ON THE DRAWINGS ARE FOR HYDRAULIC CALCULATION PURPOSES ONLY. CONTRACTOR IS RESPONSIBLE FOR FURNISHING THE AMOUNT OF PIPE MATERIALS NECESSARY FOR A COMPLETE INSTALLATION.
5. ALL EXISTING PIPES INVERTS ARE APPROXIMATE. VERIFY ALL INVERTS IN FIELD. IF INVERTS DO NOT MATCH THE PLAN, CONTACT THE ARCHITECT.

UTILITY LEGEND



UTILITIES KEY NOTES

1. EXISTING WATER LINE, LOCATION UNKNOWN. FIELD VERIFY LOCATION, SIZE AND INVERT
2. SEE P-SERIES DRAWINGS FOR BUILDING CONNECTIONS
3. REINSTALL EXISTING END SECTION ON EXISTING PIPE
4. TIE INTO EXISTING SANITARY LIFT STATION
5. REGRADE SWALE
6. INSTALL DRAIN DOWN PIT ON WATER LINE
7. 6" UNDERDRAIN
8. OUTLET PIPE INTO BASIN, INSTALL ANIMAL GUARD ON EXPOSED END
9. NEW 3" PVC WATER LINE
10. TIE NEW OUTLET CONTROL STRUCTURE INTO EXISTING 24" HDPE PIPE
11. TIE NEW 3" WATER LINE INTO EXISTING RESTROOM BUILDING. FIELD VERIFY LOCATION, DEPTH AND SIZE OF BUILDING CONNECTION
12. INSTALL TURF DRAINAGE STRUCTURES UNDER TURF PLAYING SURFACE. INSTALL SQUARE ACCESS PATCH IN TURF ABOVE STRUCTURES.
13. INSTALL CONCRETE SPLASH BLOCK FOR DOWNSPOUT. SEE A-SERIES DRAWINGS FOR LOCATIONS

**SCHMIDT ASSOCIATES**  
415 Massachusetts Avenue  
Indianapolis, IN 46204  
www.schmidt-arch.com

Project No. 2024-029.HF2  
Project Date 01.07.2025  
Produced LW

These Drawings and Specifications, and all copies thereof are and shall remain the property and copyright of the Architect. They shall be used only with respect to this Project and are not to be used on any other Project or Work without prior written permission from the Architect.

#	Revision	Date
A1	ADDENDUM 01	01.23.2025

4355 E Stop Rd Indianapolis, IN 46237

**KEY PLAN**

**PERRY TOWNSHIP SCHOOLS**

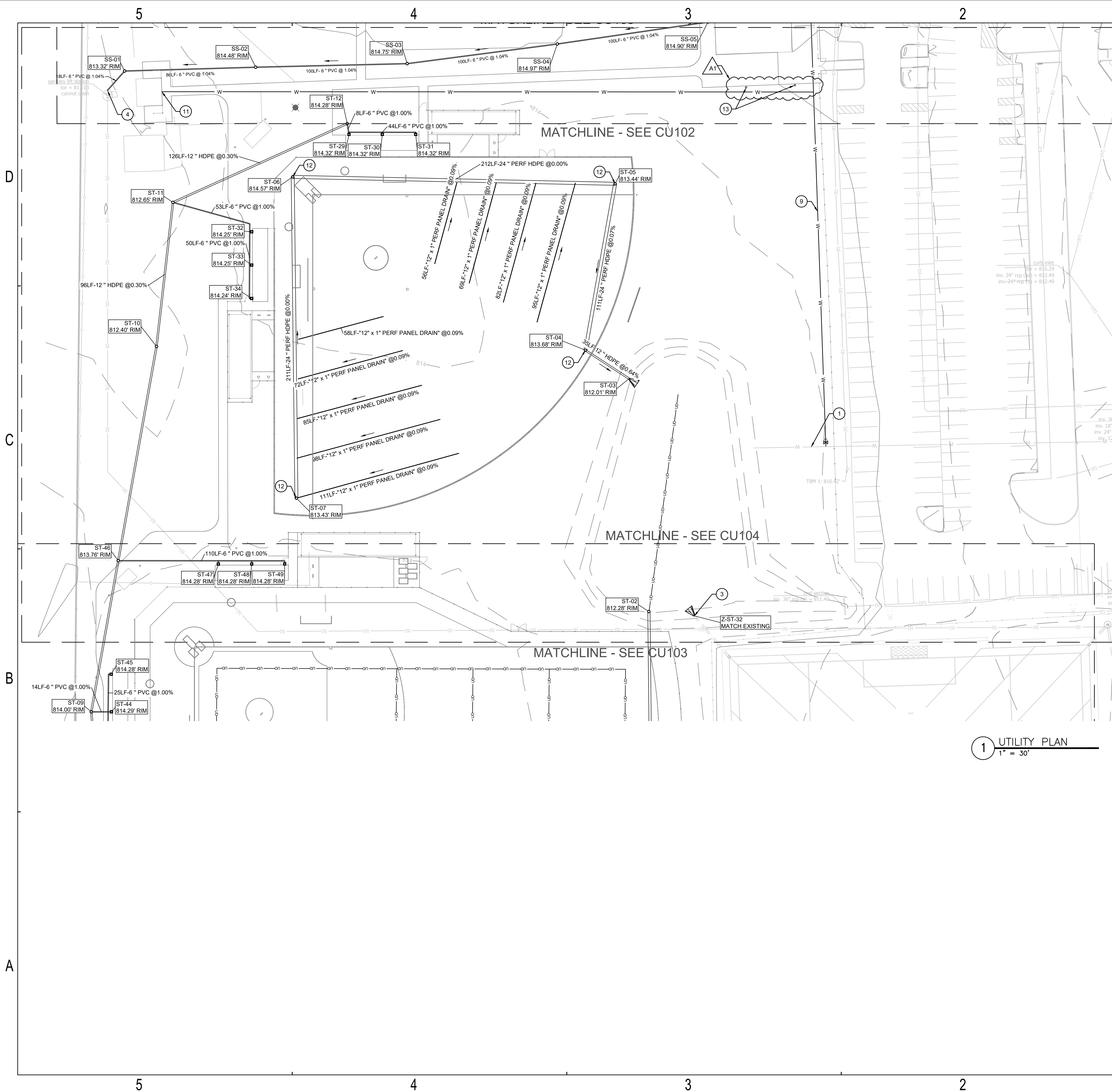
Perry Township Schools

HOLDER FIELD BASEBALL AND SOFTBALL COMPLEX

UTILITY PLAN

**CU102**





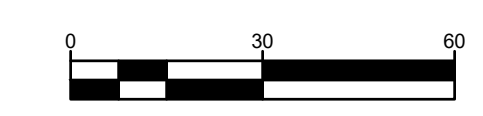
- ### GENERAL UTILITIES NOTES
- IF THE LOCAL BENCHMARK(S) WILL BE DISTURBED DURING CONSTRUCTION, IT THE CONTRACTOR'S RESPONSIBILITY TO ESTABLISH ADDITIONAL BENCHMARKS AS NEEDED.
  - ALL LIDS, CASTINGS, GRATES, BOXES, AND HATCHES ASSOCIATED WITH EXISTING UTILITY STRUCTURES THAT ARE NOT INDICATED FOR MODIFICATION SHALL BE MAINTAINED AND PROTECTED DURING CONSTRUCTION.
  - COMPACTED GRANULAR BACKFILL IS REQUIRED FOR ALL UTILITY TRENCHES LOCATED UNDER PAVED AREAS. SEE SPECIFICATIONS.
  - PIPE LENGTHS INDICATED ON THE DRAWINGS ARE FOR HYDRAULIC CALCULATION PURPOSES ONLY. CONTRACTOR IS RESPONSIBLE FOR FURNISHING THE AMOUNT OF PIPE MATERIALS NECESSARY FOR A COMPLETE INSTALLATION.
  - ALL EXISTING PIPES INVERTS ARE APPROXIMATE. VERIFY ALL INVERTS IN FIELD. IF INVERTS DO NOT MATCH THE PLAN, CONTACT THE ARCHITECT.

### UTILITY LEGEND

	PIPE
	WATER VALVE
	FIRE HYDRANT
	MANHOLE
	END SECTION
	BOX STRUCTURE
	DOWNSPOUT BOOT
	CLEAN OUT
	STORM NETWORK
	SANITARY NETWORK

- ### UTILITIES KEY NOTES
- EXISTING WATER LINE, LOCATION UNKNOWN. FIELD VERIFY LOCATION, SIZE AND INVERT
  - SEE P-SERIES DRAWINGS FOR BUILDING CONNECTIONS
  - REINSTALL EXISTING END SECTION ON EXISTING PIPE
  - TIE INTO EXISTING SANITARY LIFT STATION
  - REGRADE SWALE
  - INSTALL DRAIN DOWN PIT ON WATER LINE
  - 6\" UNDERDRAIN
  - OUTLET PIPE INTO BASIN, INSTALL ANIMAL GUARD ON EXPOSED END
  - NEW 3\" PVC WATER LINE
  - TIE NEW OUTLET CONTROL STRUCTURE INTO EXISTING 24\" HDPE PIPE
  - TIE NEW 3\" WATER LINE INTO EXISTING RESTROOM BUILDING. FIELD VERIFY LOCATION, DEPTH AND SIZE OF BUILDING CONNECTION
  - INSTALL TURF DRAINAGE STRUCTURES UNDER TURF PLAYING SURFACE. INSTALL SQUARE ACCESS PATCH IN TURF ABOVE STRUCTURES.
  - INSTALL CONCRETE SPLASH BLOCK FOR DOWNSPOUT. SEE A-SERIES DRAWINGS FOR LOCATIONS

1 UTILITY PLAN  
1\" = 30'



**SCHMIDT ASSOCIATES**  
415 Massachusetts Avenue  
Indianapolis, IN 46204  
www.schmidt-arch.com

Project No. 2024-029.HF2  
Project Date 01.07.2025  
Produced LW

These Drawings and Specifications, and all copies thereof are and shall remain the property and copyright of the Architect. They shall be used only with respect to this Project and are not to be used on any other Project or Work without prior written permission from the Architect.

#	Revision	Date
A1	ADDENDUM 01	01.23.2025

4355 E Stop Rd Indianapolis, IN 46237

**KEY PLAN**

**PERRY TOWNSHIP SCHOOLS**

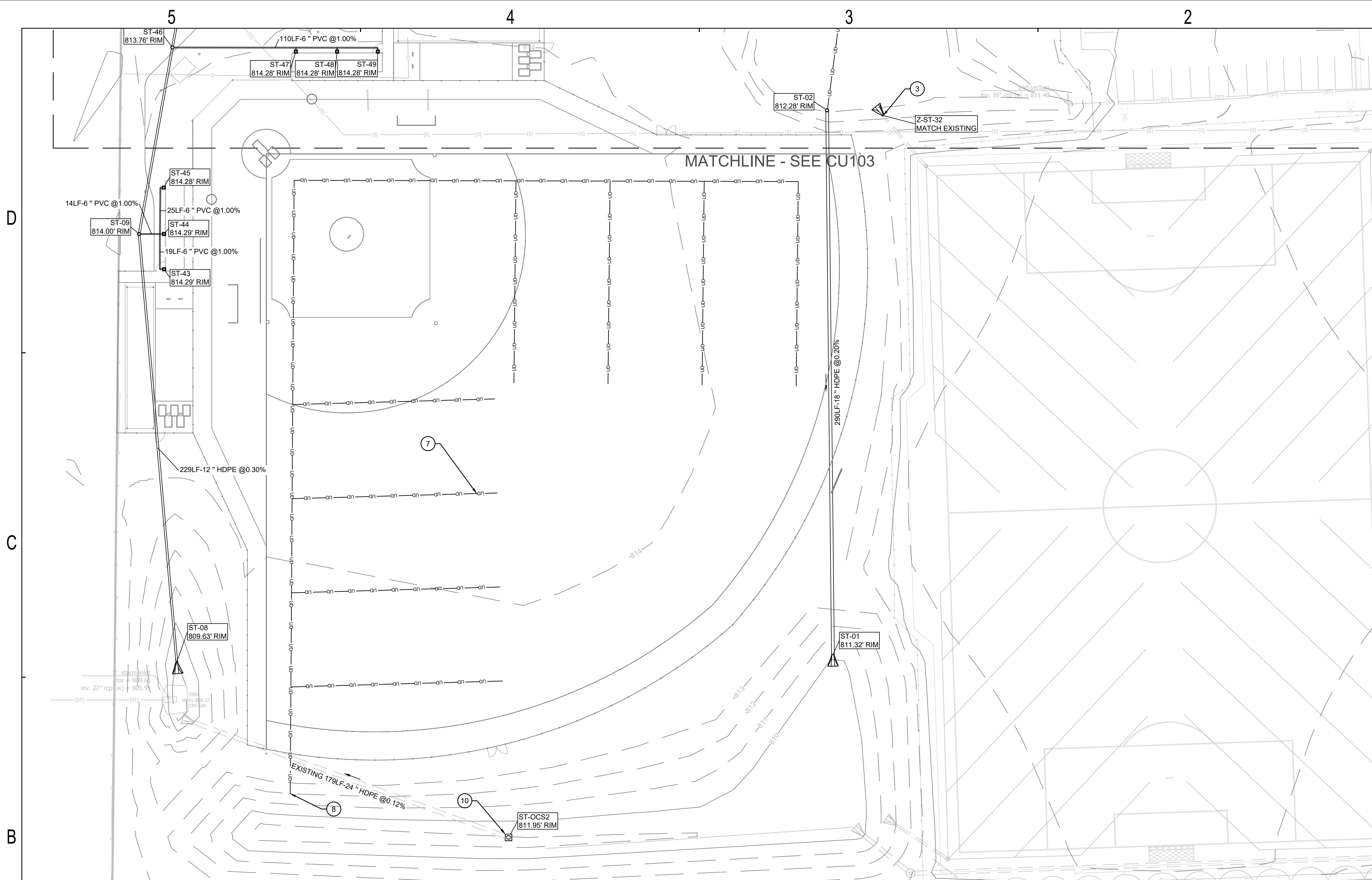
Perry Township Schools

HOLDER FIELD BASEBALL AND SOFTBALL COMPLEX

UTILITY PLAN

**CU103**





### GENERAL UTILITIES NOTES

- IF THE LOCAL BENCHMARK(S) WILL BE DISTURBED DURING CONSTRUCTION, THE CONTRACTOR'S RESPONSIBILITY TO ESTABLISH ADDITIONAL BENCHMARKS AS NEEDED.
- ALL LIDS, CASTINGS, GRATES, BOXES, AND HATCHES ASSOCIATED WITH EXISTING UTILITY STRUCTURES THAT ARE NOT INDICATED FOR MODIFICATION SHALL BE MAINTAINED AND PROTECTED DURING CONSTRUCTION.
- COMPACTED GRANULAR BACKFILL IS REQUIRED FOR ALL UTILITY TRENCHES LOCATED UNDER PAVED AREAS. SEE SPECIFICATIONS.
- PIPE LENGTHS INDICATED ON THE DRAWINGS ARE FOR HYDRAULIC CALCULATION PURPOSES ONLY. CONTRACTOR IS RESPONSIBLE FOR FURNISHING THE AMOUNT OF PIPE MATERIALS NECESSARY FOR A COMPLETE INSTALLATION.
- ALL EXISTING PIPES INVERTS ARE APPROXIMATE. VERIFY ALL INVERTS IN FIELD. IF INVERTS DO NOT MATCH THE PLAN, CONTACT THE ARCHITECT.

### UTILITY LEGEND

- |  |                  |
|--|------------------|
|  | PIPE             |
|  | WATER VALVE      |
|  | FIRE HYDRANT     |
|  | MANHOLE          |
|  | END SECTION      |
|  | BOX STRUCTURE    |
|  | DOWNSPOUT BOOT   |
|  | CLEAN OUT        |
|  | STORM NETWORK    |
|  | SANITARY NETWORK |

### UTILITIES KEY NOTES

- EXISTING WATER LINE, LOCATION UNKNOWN. FIELD VERIFY LOCATION, SIZE AND INVERT
- SEE P-SERIES DRAWINGS FOR BUILDING CONNECTIONS
- REINSTALL EXISTING END SECTION ON EXISTING PIPE
- TIE INTO EXISTING SANITARY LIFT STATION
- REGRADE SWALE
- INSTALL DRAIN DOWN PIT ON WATER LINE
- 6" UNDERDRAIN
- OUTLET PIPE INTO BASIN, INSTALL ANIMAL GUARD ON EXPOSED END
- NEW 3" PVC WATER LINE
- TIE NEW OUTLET CONTROL STRUCTURE INTO EXISTING 24" HDPE PIPE
- TIE NEW 3" WATER LINE INTO EXISTING RESTROOM BUILDING. FIELD VERIFY LOCATION, DEPTH AND SIZE OF BUILDING CONNECTION
- INSTALL TURF DRAINAGE STRUCTURES UNDER TURF PLAYING SURFACE. INSTALL SQUARE ACCESS PATCH IN TURF ABOVE STRUCTURES.
- INSTALL CONCRETE SPLASH BLOCK FOR DOWNSPOUT. SEE A-SERIES DRAWINGS FOR LOCATIONS

1 UTILITY PLAN  
1" = 30'

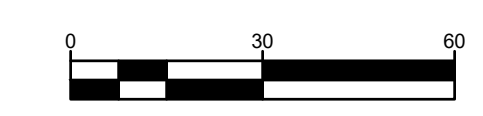
ST STRUCTURE DATA TABLE				
NUMBER	TYPE	CASTING	RIM ELEVATIONS	INVERTS
ST-01	18 inch Flared End Section 67 x 74	???	811.32' RIM	18" INV. N 809.30'
ST-02	"Nyloplast"	2499CGD	812.28' RIM	18" INV. S 809.88'
ST-03	12 inch Flared End Section 67 x 74	Standard	812.01' RIM	12" INV. NW 810.88'
ST-04	"Nyloplast"	2499CGC	813.68' RIM	24" INV. N 811.10' 12" INV. SE 811.10'
ST-05	"Nyloplast"	2499CGC	813.44' RIM	24" INV. W -5.18' 24" INV. S 811.18'
ST-06	"Nyloplast"	2499CGC	814.57' RIM	24" INV. S -5.08' 24" INV. E -5.18'
ST-07	"Nyloplast"	2499CGC	813.43' RIM	24" INV. N -5.08' 3" INV. E 809.50'
ST-08	12 inch Flared End Section 67 x 74	???	809.63' RIM	12" INV. N 808.50'
ST-09	"Nyloplast"	1299CGD	814.00' RIM	12" INV. N 809.29' 12" INV. S 809.19' 6" INV. E 809.29'
ST-10	"Nyloplast"	1299CGD	812.40' RIM	12" INV. N 810.12' 12" INV. S 810.02'
ST-11	"Nyloplast"	1299CGD	812.65' RIM	12" INV. NE 810.50' 12" INV. S 810.40' 6" INV. E 810.50'
ST-12	"Nyloplast"	1299CGD	814.28' RIM	12" INV. SW 810.88' 6" INV. S 810.98'
ST-13	18 inch Flared End Section 67 x 74	???	807.15' RIM	18" INV. SE 805.50'
ST-14	18 inch Flared End Section 67 x 74	???	808.48' RIM	18" INV. S 806.83'
ST-15	"Nyloplast"	1899CGD	809.06' RIM	18" INV. N 807.00'
ST-16	12 inch Flared End Section 67 x 74	???	809.88' RIM	12" INV. S 808.75'

ST STRUCTURE DATA TABLE				
NUMBER	TYPE	CASTING	RIM ELEVATIONS	INVERTS
ST-17	"Nyloplast"	2499CGC	814.01' RIM	24" INV. W 809.03' 12" INV. N 809.03'
ST-18	"Nyloplast"	2499CGC	813.58' RIM	24" INV. S 809.18' 24" INV. E 809.18'
ST-19	"Nyloplast"	2499CGC	815.12' RIM	24" INV. E 809.42' 24" INV. N 809.42' 10" INV. SW 809.52'
ST-20	"Nyloplast"	2499CGC	814.69' RIM	24" INV. W 809.61' 24" INV. E 809.61'
ST-21	"Nyloplast"	2499CGC	813.77' RIM	24" INV. W 810.88' 3" INV. N 810.88' 6" INV. S 811.36'
ST-22	"Nyloplast"	1299CGS	815.15' RIM	6" INV. NW 809.73' 6" INV. SE 809.73' 10" INV. NE 809.63'
ST-23	"Downspout Boot"	R-4929-A1C	815.23' RIM	6" INV. S 810.30'
ST-24	"Downspout Boot"	R-4929-A1C	815.29' RIM	6" INV. S 810.50'
ST-25	"Downspout Boot"	R-4929-A1C	815.36' RIM	6" INV. S 810.73'
ST-26	"Downspout Boot"	R-4929-A1C	815.20' RIM	6" INV. W 810.25'
ST-27	"Downspout Boot"	R-4929-A1C	815.31' RIM	6" INV. W 810.50'
ST-28	"Downspout Boot"	R-4929-A1C	815.43' RIM	6" INV. W 810.70'
ST-29	"Downspout Boot"	R-4929-A1C	814.32' RIM	6" INV. N 811.05'
ST-30	"Downspout Boot"	R-4929-A1C	814.32' RIM	6" INV. N 811.20'
ST-31	"Downspout Boot"	R-4929-A1C	814.32' RIM	6" INV. N 811.40'
ST-32	"Downspout Boot"	R-4929-A1C	814.25' RIM	6" INV. W 810.70'

ST STRUCTURE DATA TABLE				
NUMBER	TYPE	CASTING	RIM ELEVATIONS	INVERTS
ST-33	"Downspout Boot"	R-4929-A1C	814.25' RIM	6" INV. W 810.80'
ST-34	"Downspout Boot"	R-4929-A1C	814.24' RIM	6" INV. W 810.99'
ST-35	"Nyloplast"	1299CGC	811.44' RIM	6" INV. SE 809.08' 6" INV. W 808.98' 6" INV. E 808.98'
ST-36	"Downspout Boot"	R-4929-A1C	812.09' RIM	6" INV. W 809.42'
ST-37	"Downspout Boot"	R-4929-A1C	812.23' RIM	6" INV. W 809.20'
ST-38	"Downspout Boot"	R-4929-A1C	812.35' RIM	6" INV. W 809.43'
ST-39	"Clean out"	Standard	812.81' RIM	6" INV. E 810.23' 6" INV. NW 810.13'
ST-40	"Downspout Boot"	R-4929-A1C	813.06' RIM	6" INV. S 810.50'
ST-41	"Downspout Boot"	R-4929-A1C	813.22' RIM	6" INV. S 810.70'
ST-42	"Downspout Boot"	R-4929-A1C	813.39' RIM	6" INV. S 810.95'
ST-43	"Downspout Boot"	R-4929-A1C	814.29' RIM	6" INV. W 809.61'
ST-44	"Downspout Boot"	R-4929-A1C	814.29' RIM	6" INV. W 809.42'
ST-45	"Downspout Boot"	R-4929-A1C	814.28' RIM	6" INV. W 809.66'
ST-46	"Nyloplast"	1299CGC	813.76' RIM	12" INV. N 809.59' 12" INV. S 809.59' 6" INV. E 809.69'
ST-47	"Downspout Boot"	R-4929-A1C	814.28' RIM	6" INV. N 810.71'
ST-48	"Downspout Boot"	R-4929-A1C	814.28' RIM	6" INV. N 810.72'

ST STRUCTURE DATA TABLE				
NUMBER	TYPE	CASTING	RIM ELEVATIONS	INVERTS
ST-49	"Downspout Boot"	R-4929-A1C	814.28' RIM	6" INV. N 810.75'
ST-50	"Clean out"	Standard	814.94' RIM	6" INV. E 811.86' 6" INV. N 811.86' 6" INV. S 811.86' 6" INV. W 811.86'
ST-51	"Downspout Boot"	R-4929-A1C	815.00' RIM	6" INV. N 812.06'
ST-52	"Downspout Boot"	R-4929-A1C	814.99' RIM	6" INV. N 812.00'
ST-53	"Downspout Boot"	R-4929-A1C	814.99' RIM	6" INV. N 812.06'
ST-OCS1	36"x36" Box	R-4215-C	807.27' RIM	18" INV. NW 805.68'
ST-OCS2	36"x36" Box	R-4215-C	811.95' RIM	24" INV. W 808.57'

SS STRUCTURE DATA TABLE				
NUMBER	TYPE	CASTING	RIM ELEVATIONS	INVERTS
SS-01	"Clean out"	Standard	813.32' RIM	6" INV. E 808.50' 6" INV. SW 808.50'
SS-02	"Clean out"	Standard	814.48' RIM	6" INV. E 809.40' 6" INV. W 809.40'
SS-03	"Clean out"	Standard	814.75' RIM	6" INV. E 810.43' 6" INV. W 810.43'
SS-04	"Clean out"	Standard	814.97' RIM	6" INV. E 811.46' 6" INV. W 811.46'
SS-05	"Clean out"	Standard	814.90' RIM	6" INV. W 812.50'
SS-06	"Clean out"	Standard	814.79' RIM	6" INV. SW 812.23'
SS-07	"Clean out"	Standard	814.92' RIM	



**SCHMIDT ASSOCIATES**  
415 Massachusetts Avenue  
Indianapolis, IN 46204  
www.schmidt-arch.com

Project No. 2024-029.HF2  
Project Date 01.07.2025  
Produced LW

These Drawings and Specifications, and all copies thereof are and shall remain the property and copyright of the Architect. They shall be used only with respect to this Project and are not to be used on any other Project or Work without prior written permission from the Architect.

#	Revision	Date
A1	ADDENDUM 01	01.23.2025

4355 E Stop Rd Indianapolis, IN 46237

**KEY PLAN**

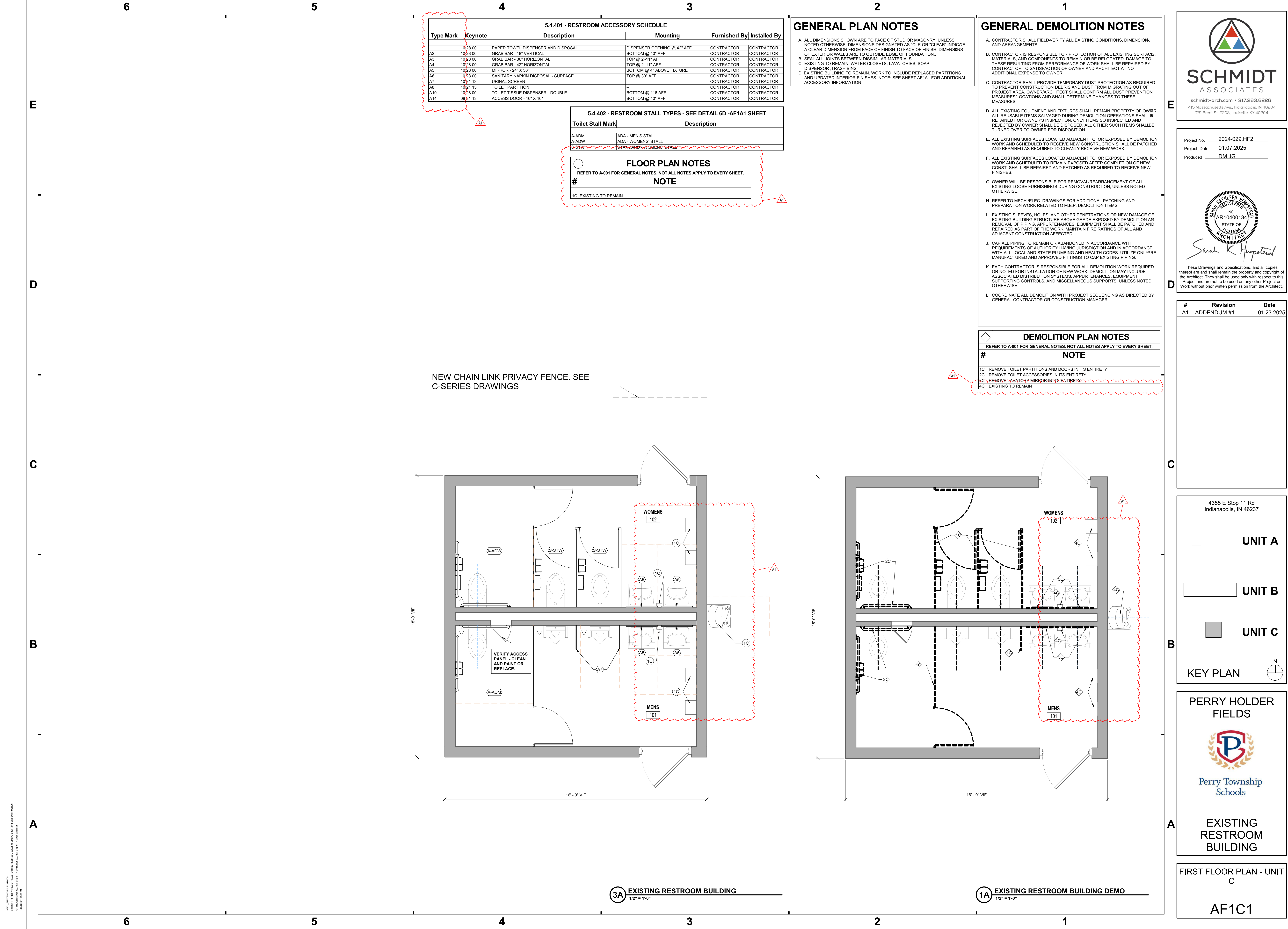
**PERRY TOWNSHIP SCHOOLS**

HOLDER FIELD BASEBALL AND SOFTBALL COMPLEX

UTILITY PLAN

**CU104**





**SCHMIDT ASSOCIATES**  
schmidt-arch.com • 317.263.6226  
415 Massachusetts Ave., Indianapolis, IN 46204  
731 Brent St., #203, Louisville, KY 40204

Project No. 2024-029.HF2  
Project Date 01.07.2025  
Produced DM.JG

Sarah K. Hempstead  
These Drawings and Specifications, and all copies thereof are and shall remain the property and copyright of the Architect. They shall be used only with respect to this Project and are not to be used on any other Project or Work without prior written permission from the Architect.

#	Revision	Date
A1	ADDENDUM #1	01.23.2025

4355 E Stop 11 Rd  
Indianapolis, IN 46237

**UNIT A**

**UNIT B**

**UNIT C**

**KEY PLAN**

**PERRY HOLDER FIELDS**

Perry Township Schools

**EXISTING RESTROOM BUILDING**

**FIRST FLOOR PLAN - UNIT C**

**AF1C1**