

**ADDENDUM
NO. 3**

March 11, 2025

**CROWN POINT DISTRICT PROJECTS - TRANSPORTATION CENTER
IMPROVEMENTS, CPHS EIFS IMPROVEMENTS, AND LAKE STREET
EIFS IMPROVEMENTS PROJECT**

Crown Point, IN 46307

TO: ALL BIDDERS OF RECORD

This Addendum forms a part of and modifies the Bidding Requirements, Contract Forms, Contract Conditions, the Specifications, and the Drawings dated February 20, 2025 by Gibraltar Design. Acknowledge receipt of the Addendum in the space provided on the Bid Form. Failure to do so may subject the Bidder to disqualification.

This Addendum consists of page ADD 3-1 and attached Addendum No. 3 from Gibraltar Design dated March 10, 2025 and consisting of 1 page and 7 drawings.

ADDENDUM THREE

Addendum Three (AD.03) to the drawings and specifications prepared by Gibraltar Design for **Crown Point District Project - CSC Transportation Center Improvements, CPHS EIFS Improvements and Lake Street ES EIFS Improvements** for Crown Point Community School Corporation, Crown Point, Indiana.

All Contractors bidding on this project shall read all of the items covered below and shall comply with all of the requirements as set forth, including any necessary refinements or additions generated by this Addendum and required by the intent of the original contract documents. All Contractors shall acknowledge on their bid form that they have received this Addendum and Addendum One, Two and include the appropriate content of same within their bid proposal.

DRAWINGS

1. Sheet C-101

A. Refer to revised full size drawing included in this Addendum for revisions.

2. Sheet C-102

A. Refer to revised full size drawing included in this Addendum for revisions.

3. Sheet C-103

A. Refer to revised full size drawing included in this Addendum for revisions.

4. Sheet C-104

A. Refer to revised full size drawing included in this Addendum for revisions.

5. Sheet C-105

A. Refer to revised full size drawing included in this Addendum for revisions.

6. Sheet C-106

A. Refer to revised full size drawing included in this Addendum for revisions.

7. Sheet C-107

A. Refer to revised full size drawing included in this Addendum for revisions.

8. Sheet A-311, CP High School EIFS

A. Remove the Elevation indication #5 from the Keyplan and rename Indication #6 on the Keyplan to Indication #5.

Page 1 inclusive and Seven (7) Full-Size Drawings, constitute the total makeup of **Addendum Three**.

GENERAL PLAN NOTES:

- A. FOR GENERAL PROJECT NOTES, MATERIAL INDICATIONS LEGEND, SYMBOL LEGEND, ABBREVIATIONS, ETC., REFER TO C SERIES SHEETS.
- B. CONTRACTOR IS TO MATCH EXISTING GRADES AND DRAINAGE PATHWAYS.
- C. ALL CONCRETE, SIDEWALK, AND CURB REMOVED SHALL BE SAWCUT FULL DEPTH.



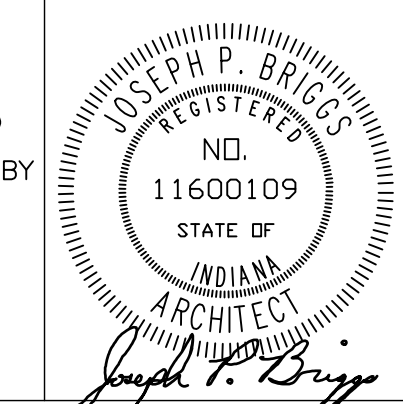
GIBRALTAR
DESIGN
ARCHITECTURE • ENGINEERING • INTERIOR DESIGN

PROJECT
CROWN POINT DISTRICT PROJECT - TRANSPORTATION CENTER IMPROVEMENTS, CPHS EIFS IMPROVEMENTS, AND LAKE STREET ES EIFS IMPROVEMENTS

CROWN POINT COMMUNITY SCHOOL CORPORATION
CROWN POINT, INDIANA

GIBRALTAR DESIGN
9102 N. Meridian St., Ste. 300
Indianapolis, IN 46260
Homepage: www.GibraltarDesign.com
Email: info@GibraltarDesign.com
Phone: 317.580.5777 Fax: 317.580.5778

PROJECT: 24-110
DATE: 02/20/25
COORDINATED BY: JKF
DRAWN BY: CJA PCD
CHECKED BY: JKF



COPYRIGHT NOTICE:
THE CONCEPTS, DESIGNS, PLANS, DETAILS, ETC. SHOWN ON THIS DOCUMENT ARE THE PROPERTY OF GIBRALTAR DESIGN AND WERE CREATED FOR USE ON THIS SPECIFIC PROJECT. NONE OF THIS INFORMATION SHALL BE USED BY ANY PERSON OR FIRM FOR ANY PURPOSE WITHOUT THE EXPRESS WRITTEN CONSENT OF GIBRALTAR DESIGN. THE OWNER MAY RETAIN COPIES FOR INFORMATION AND REFERENCE IN CONNECTION ONLY WITH THIS PROJECT.

REVISIONS

MARK	DATE	ISSUED FOR
AD-2	03/06/25	ADDENDUM NO. 2
AD-3	03/10/25	ADDENDUM NO. 3

DRAWING
OVERALL SITE PLAN

PROJECT
CROWN POINT DISTRICT PROJECT - TRANSPORTATION CENTER IMPROVEMENTS

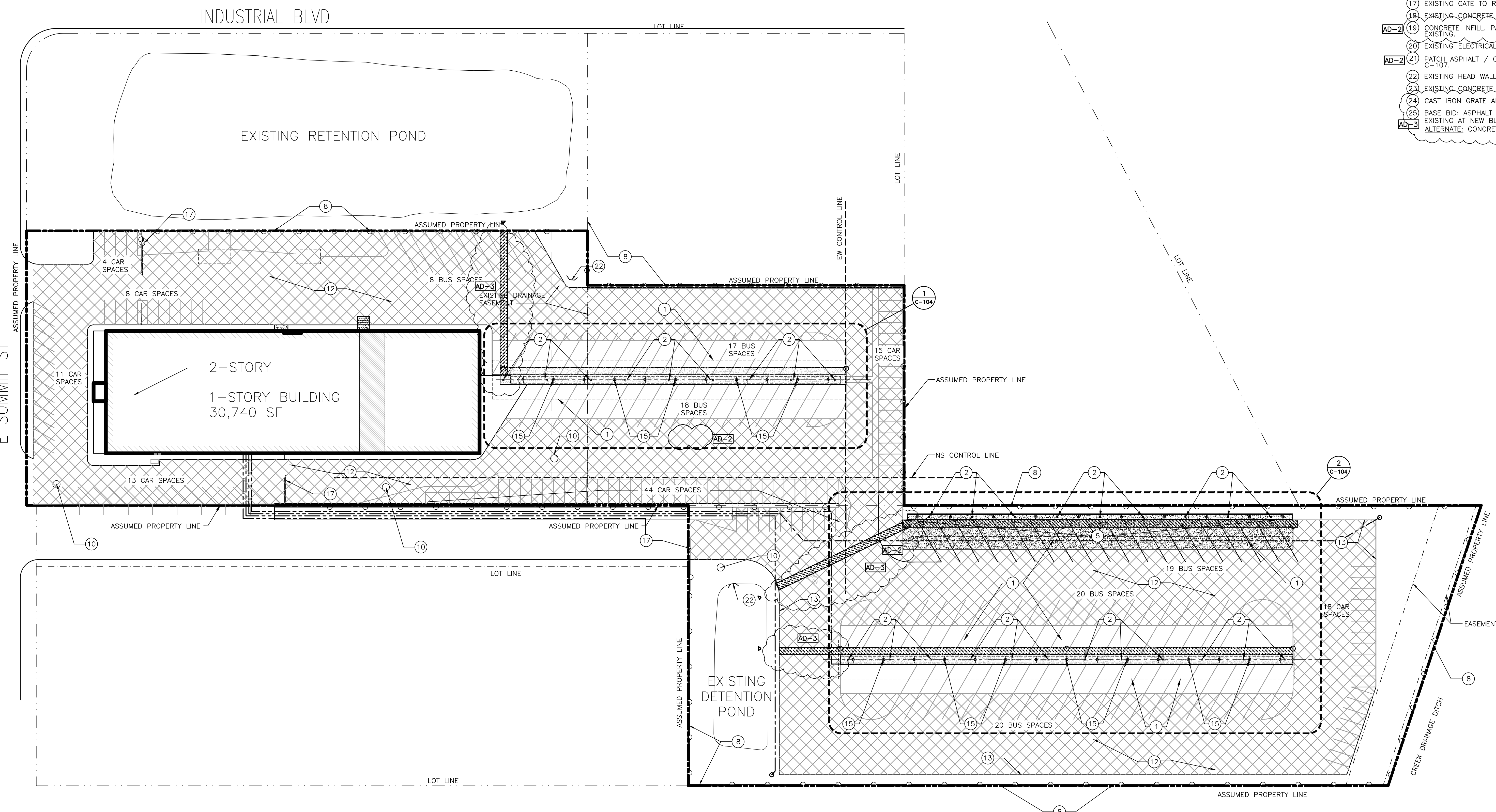
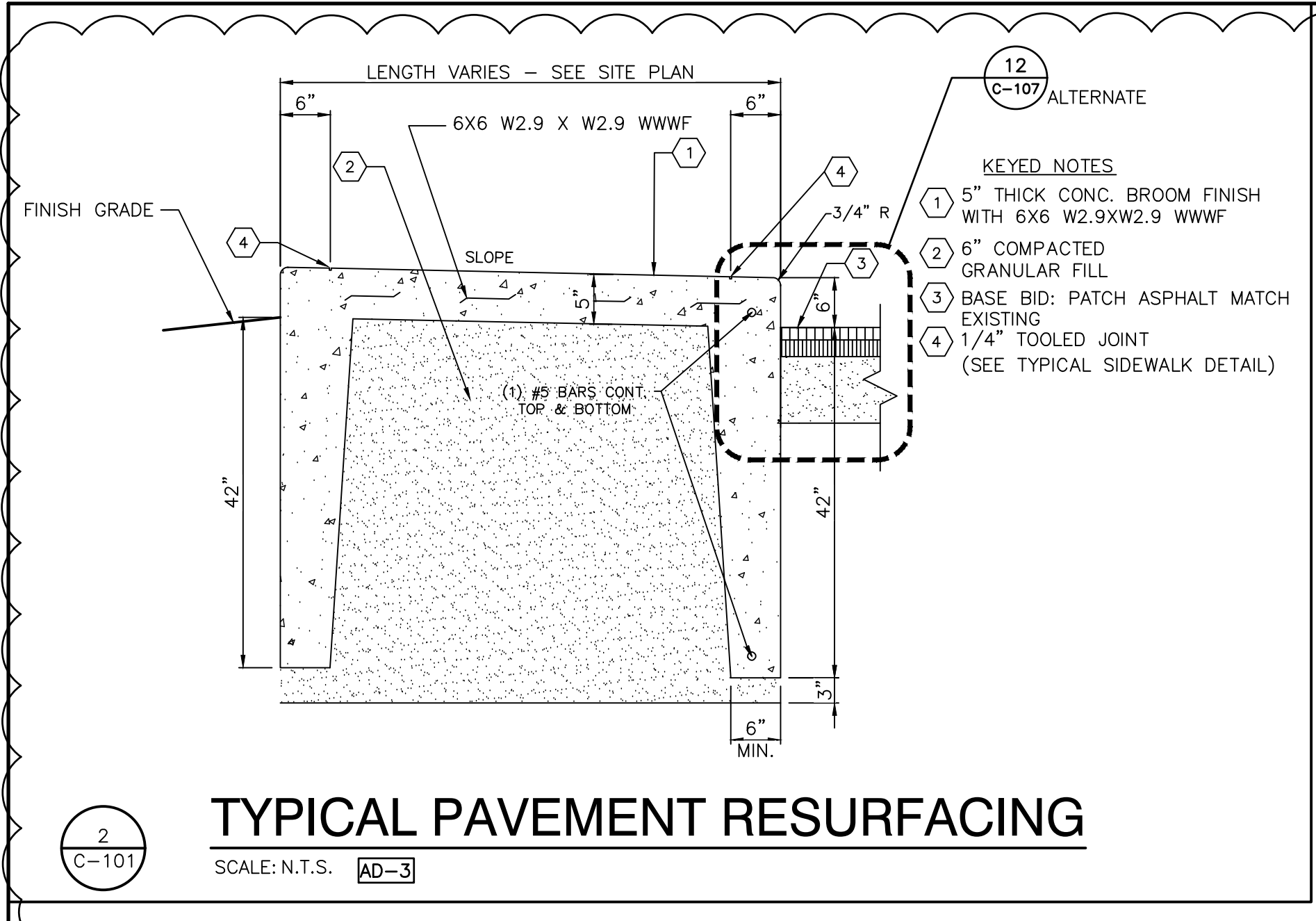
GIBRALTAR DESIGN SHEET
C-101

PAVING LEGEND:

- REFER TO PLAN NOTE 12
- CONCRETE

PLAN NOTES:
(ALL PLAN NOTES MAY NOT BE INDICATED ON THIS SHEET.)

- 1 EDGE OF CANOPY ABOVE.
- 2 STEEL CANOPY COLUMN BY CANOPY CONTRACTOR, TYPICAL.
- 3 EXISTING PAINTED STRIPING TO REMAIN.
- 4 4" PAINTED STRIPE - YELLOW.
- 5 6" THICK CONCRETE ISLAND WITH 6" CURB.
- 6 HEAVY DUTY ASPHALT, PATCH AND REPAIR.
- 7 EXISTING CONCRETE ISLAND TO REMAIN.
- 8 EXISTING CHAIN LINK FENCE TO REMAIN, NO WORK.
- AD-2 (9) ELECTRICAL FOR BUS BLOCK HEATERS, REFER TO ELECTRICAL DRAWINGS. PROVIDE SILT BARRIER DURING CONSTRUCTION.
- 10 APPROXIMATE LOCATION OF EXISTING STORM MANHOLE TO REMAIN.
- 11 PATCH EXISTING HEAVY DUTY ASPHALT, COORDINATE WITH ELECTRICAL.
- AD-2 (12) BASE BID: PATCH, REPAIR, AND SEAL EXISTING ASPHALT. ALTERNATE: MILL AND REPAVE TOP 2" OF ASPHALT.
- 13 APPROXIMATE EDGE OF EXISTING ASPHALT.
- AD-2 (14) NOT USED.
- 15 EXISTING CONCRETE BASE AND STEEL POLE FOR EXISTING ELECTRICAL RACEWAY TO REMAIN. PROTECT DURING CONSTRUCTION.
- 16 REMOVE LIGHT FIXTURES FROM LIGHT POLE AND CUT POLE ±15'-3" ABOVE CONCRETE ISLAND.
- 17 EXISTING GATE TO REMAIN, NO WORK.
- 18 EXISTING CONCRETE SIDEWALK TO REMAIN, NO WORK.
- AD-2 (19) CONCRETE INFILL, PATCH AND REPAIR SURROUNDING CONCRETE. MATCH EXISTING.
- 20 EXISTING ELECTRICAL TRANSFORMER TO REMAIN, NO WORK.
- AD-2 (21) PATCH ASPHALT / CONCRETE PARKING SURFACE REFER TO DETAILS C-104.
- 22 EXISTING HEAD WALL TO REMAIN, NO WORK.
- 23 EXISTING CONCRETE SURFACE TO REMAIN, NO WORK.
- 24 CAST IRON GRATE AND TRENCH DRAIN AT EACH CANOPY COLUMN.
- AD-3 (25) BASE BID: ASPHALT DRIVE TO REMAIN, PATCH TO MATCH EXISTING AT NEW BUS ISLAND. ALTERNATE: CONCRETE APRON/PAD.



OVERALL SITE PLAN
SCALE: 1" = 40'-0"

Monday, 3/10/2025 - 5:29 PM - LAST SAVED BY CALANIS V. 24-110 CROWN POINT CSC - TRANSPORTATION CENTER AUTOCAD/CIVIL (C-101).DWG



GIBALTAR
DESIGN
ARCHITECTURE • ENGINEERING • INTERIOR DESIGN

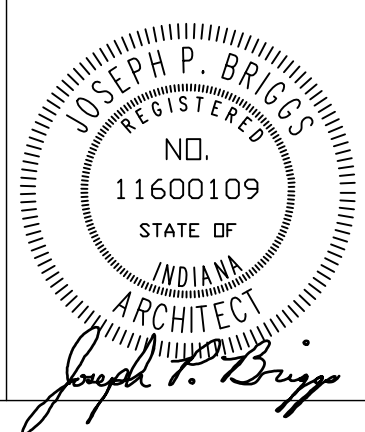
PROJECT
CROWN POINT DISTRICT PROJECT - TRANSPORTATION CENTER IMPROVEMENTS, CPHS EIFS IMPROVEMENTS, AND LAKE STREET ES EIFS IMPROVEMENTS

CROWN POINT COMMUNITY SCHOOL CORPORATION
CROWN POINT, INDIANA

GIBALTAR DESIGN

9102 N. Meridian St., Ste. 300
Indianapolis, IN 46260
Homepage: www.GibraltarDesign.com
Email: info@GibraltarDesign.com
Phone: 317.580.5777 Fax: 317.580.5778

PROJECT: 24-110
DATE: 02/20/25
COORDINATED BY: JKF
DRAWN BY: CJA
CHECKED BY: JKF



COPYRIGHT NOTICE:
THE CONCEPTS, DESIGNS, PLANS, DETAILS, ETC. SHOWN ON THIS DOCUMENT ARE THE PROPERTY OF GIBALTAR DESIGN AND WERE CREATED FOR USE ON THIS SPECIFIC PROJECT. NONE OF THIS INFORMATION SHALL BE USED BY ANY PERSON OR FIRM FOR ANY PURPOSE WITHOUT THE EXPRESS WRITTEN CONSENT OF GIBALTAR DESIGN. THE OWNER MAY RETAIN COPIES FOR INFORMATION AND REFERENCE IN CONNECTION ONLY WITH THIS PROJECT.

MARK	DATE	ISSUED FOR
AD-1	02/27/25	ADDENDUM NO. 1
AD-2	03/06/25	ADDENDUM NO. 2
AD-3	03/10/25	ADDENDUM NO. 3

DRAWING
OVERALL SITE DEMOLITION PLAN

PROJECT
CROWN POINT DISTRICT PROJECT - TRANSPORTATION CENTER IMPROVEMENTS

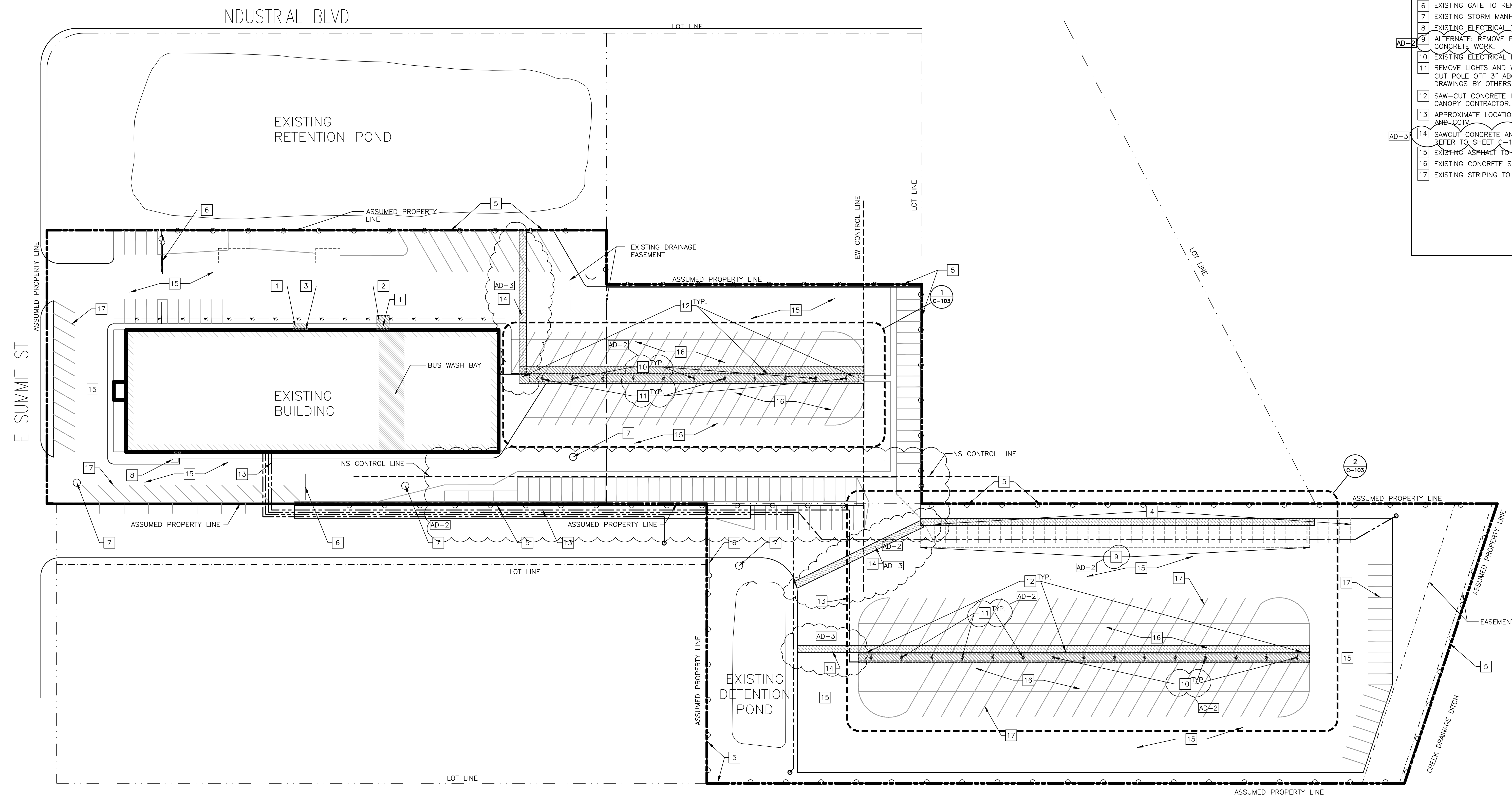
GIBALTAR DESIGN SHEET
C-102

GENERAL DEMOLITION NOTES:

- A. THE CONTRACTOR SHALL BE RESPONSIBLE FOR REMOVAL AND DISPOSAL OFF-SITE OF ALL ITEMS SHOWN ON THE DEMOLITION PLAN INCLUDING ITEMS ENCOUNTERED DURING EXCAVATION OF BUILDING FOUNDATIONS AND UTILITY PLACEMENT.
- B. PRIOR TO STARTING DEMOLITION, IT IS THE RESPONSIBILITY OF THE CONTRACTOR TO OBTAIN ALL PERMITS REQUIRED BY LOCAL GOVERNMENTAL AGENCIES.
- C. THE CONTRACTOR SHALL COORDINATE WITH LOCAL UTILITY COMPANIES FOR THE DISCONNECTION AND REMOVAL OF SERVICES TO EXISTING STRUCTURES.
- D. ITEMS SHOWN ON THE DEMOLITION PLAN TO BE SALVAGED SHALL BE TRANSPORTED TO LOCATION SPECIFIED BY THE OWNER OR HIS/HER REPRESENTATIVE.
- E. ITEMS OF SALVAGEABLE VALUE TO THE CONTRACTOR MAY BE REMOVED WITH THE OWNER OR HIS/HER REPRESENTATIVE'S PERMISSION. THE CONTRACTOR SHALL NOT STORE THESE ITEMS ON SITE.
- F. THE CONTRACTOR MAY NOT USE EXPLOSIVES OR BURN DEBRIS.
- G. CONDUCT DEMOLITION OPERATIONS TO ENSURE MINIMAL INTERFERENCE WITH ROADS, SIDEWALKS, AND OTHER ADJACENT OCCUPIED FACILITIES.
- H. DO NOT CLOSE OR OBSTRUCT ROADS, SIDEWALKS OR ANY OTHER OCCUPIED FACILITIES WITHOUT PERMISSION FROM THE LOCAL AUTHORITY HAVING JURISDICTION AND/OR PROPERTY OWNERS.
- I. THE CONTRACTOR SHALL ENSURE SAFE PASSAGE OF PERSON TRAVERING THROUGH OR AROUND THE CONSTRUCTION SITE.
- J. THE CONTRACTOR SHALL PROTECT FROM DAMAGE, SURROUNDING STRUCTURES, UTILITIES AND OTHER FACILITIES DURING DEMOLITION AND REMOVAL OPERATIONS.
- K. UTILITIES SHALL BE REMOVED AND BACKFILLED WITH APPROVED BACKFILL MATERIAL. BACKFILL MATERIAL SHALL BE PLACED IN MAXIMUM EIGHT INCH LIFTS AND COMPACTED IN ACCORDANCE WITH THE GEOTECHNICAL REPORT OR A MINIMUM OF 95% OF A STANDARD PROCTOR.
- L. THE CONTRACTOR SHALL BE RESPONSIBLE FOR ENSURING THE CONSTRUCTION SITE AND SURROUNDING AREAS ARE FREE OF ACCUMULATED DEBRIS.

DEMOLITION PLAN NOTES:

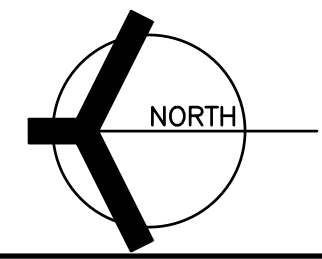
- (ALL PLAN NOTES MAY NOT BE INDICATED ON THIS SHEET.)
- 1 REMOVE PORTION OF CONCRETE WALK. COORDINATE WITH PLUMBING.
 - 2 REMOVE PORTION OF ASPHALT FULL DEPTH. COORDINATE WITH PLUMBING.
 - 3 REMOVE DOWNSPOUT. CAP STORMWATER LINE GAS TIGHT. PATCH GUTTER.
 - 4 PAINT EXISTING PARKING STRIPES WITH ASPHALTIC PAINT. PREPARE FOR NEW PAINT STRIPES.
 - 5 EXISTING CHAIN LINK FENCE TO REMAIN. NO WORK.
 - 6 EXISTING GATE TO REMAIN. NO WORK.
 - 7 EXISTING STORM MANHOLE TO REMAIN. NO WORK.
 - 8 EXISTING ELECTRICAL TRANSFORMER TO REMAIN. NO WORK.
 - 9 ALTERNATE: REMOVE PORTION OF ASPHALT FULL DEPTH. PREP FOR CONCRETE WORK.
 - 10 EXISTING ELECTRICAL RACENAY COLUMN TO REMAIN. NO WORK.
 - 11 REMOVE LIGHTS AND WIRING. REFER TO ELECTRICAL DEMOLITION DRAWINGS. CUT POLE OFF 3" ABOVE NEW CANOPY SOFFIT. COORDINATE WITH CANOPY DRAWINGS BY OTHERS.
 - 12 SAW-CUT CONCRETE ISLAND FOR CANOPY STRUCTURE. COORDINATE WITH CANOPY CONTRACTOR.
 - 13 APPROXIMATE LOCATION OF EXISTING CONDUIT AND WIRE FOR ELECTRICAL AND CCTV.
 - 14 SAWCUT CONCRETE AND OR ASPHALT MINIMUM 6'-0"W FOR STORM PIPE. REFER TO SHEET C-106.
 - 15 EXISTING ASPHALT TO REMAIN.
 - 16 EXISTING CONCRETE SURFACE TO REMAIN.
 - 17 EXISTING STRIPING TO REMAIN. REPAINT IF ALTERNATE ACCEPTED.



1
C-102

OVERALL SITE DEMOLITION PLAN

SCALE: 1" = 40'-0"



Monday, 3/10/2025 - 5:29 PM - LAST SAVED BY CALANIS V. Y. 24-110 CROWN POINT CSC - TRANSPORTATION CENTER IMPROVEMENTS (C-102.DWG)
AUTOCAD/CIVIL (C-102.DWG)



GIBRALTAR
DESIGN
ARCHITECTURE • ENGINEERING • INTERIOR DESIGN

PROJECT
**CROWN POINT
DISTRICT
PROJECT -
TRANSPORTATION
CENTER
IMPROVEMENTS,
CPHS EIFS
IMPROVEMENTS,
AND LAKE STREET
ES EIFS
IMPROVEMENTS**

CROWN POINT COMMUNITY
SCHOOL CORPORATION
CROWN POINT, INDIANA

GIBRALTAR DESIGN

9102 N. Meridian St., Ste. 300
Indianapolis, IN 46260
Homepage: www.GibraltarDesign.com
Email: info@GibraltarDesign.com
Phone: 317.580.5777 Fax: 317.580.5778

PROJECT

24-110

DATE

02/20/25

COORDINATED BY

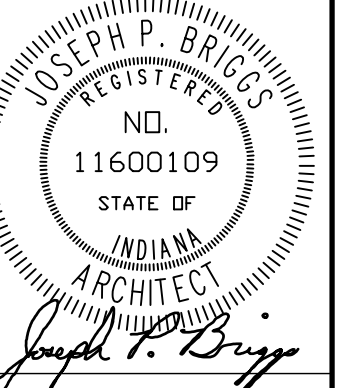
JKF

DRAWN BY

CJA PCD

CHECKED BY

JKF



COPYRIGHT NOTICE:
THE CONCEPTS, DESIGNS, PLANS, DETAILS, ETC. SHOWN ON THIS DOCUMENT ARE THE PROPERTY OF GIBRALTAR DESIGN AND ARE NOT TO BE REPRODUCED OR TRANSMITTED IN ANY FORM OR BY ANY MEANS, ELECTRONIC OR MECHANICAL, INCLUDING PHOTOCOPYING, RECORDING, OR BY ANY INFORMATION STORAGE AND RETRIEVAL SYSTEM, WITHOUT THE EXPRESS WRITTEN CONSENT OF GIBRALTAR DESIGN. THE OWNER MAY RETAIN COPIES FOR INFORMATION AND REFERENCE IN CONNECTION ONLY WITH THIS PROJECT.

REVISIONS

MARK	DATE	ISSUED FOR
AD-1	02/27/25	ADDENDUM NO. 1
AD-2	03/06/25	ADDENDUM NO. 2
AD-3	03/10/25	ADDENDUM NO. 3

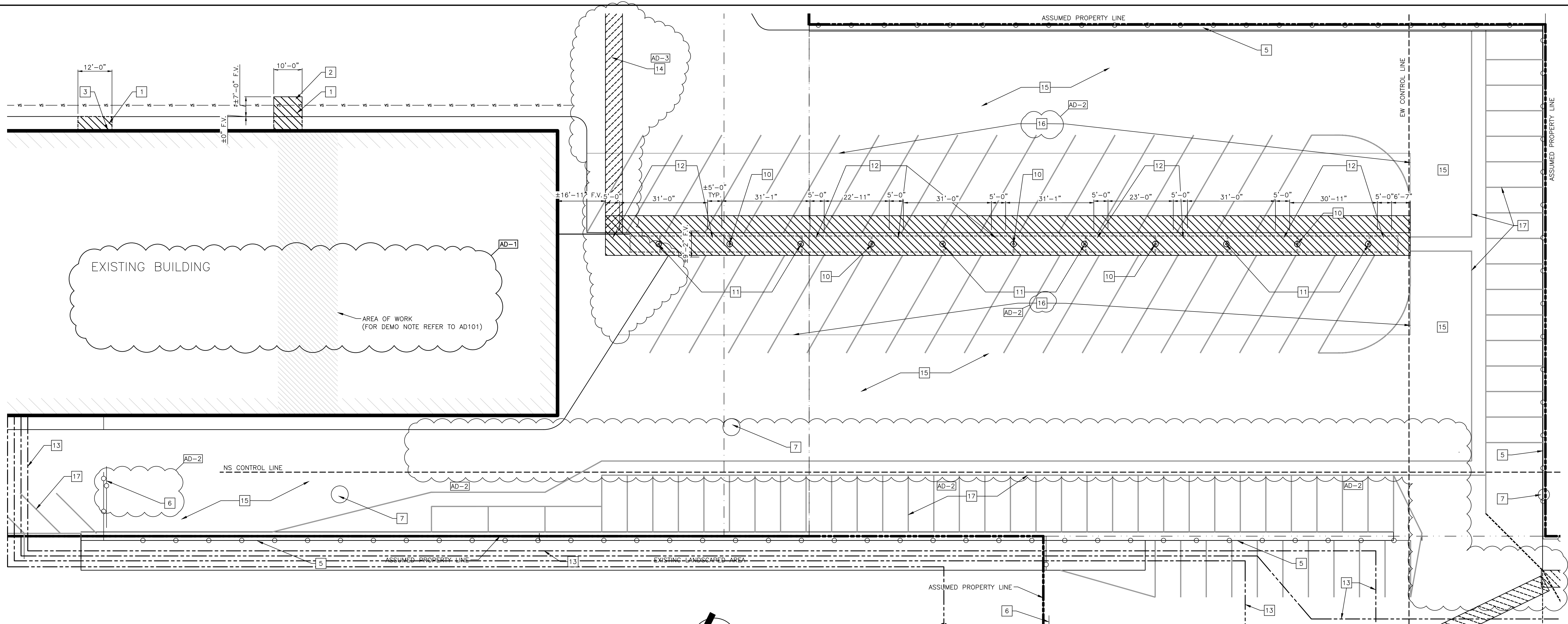
DRAWING

**ENLARGED DEMOLITION
SITE PLANS**

PROJECT
**CROWN POINT DISTRICT PROJECT -
TRANSPORTATION CENTER
IMPROVEMENTS**

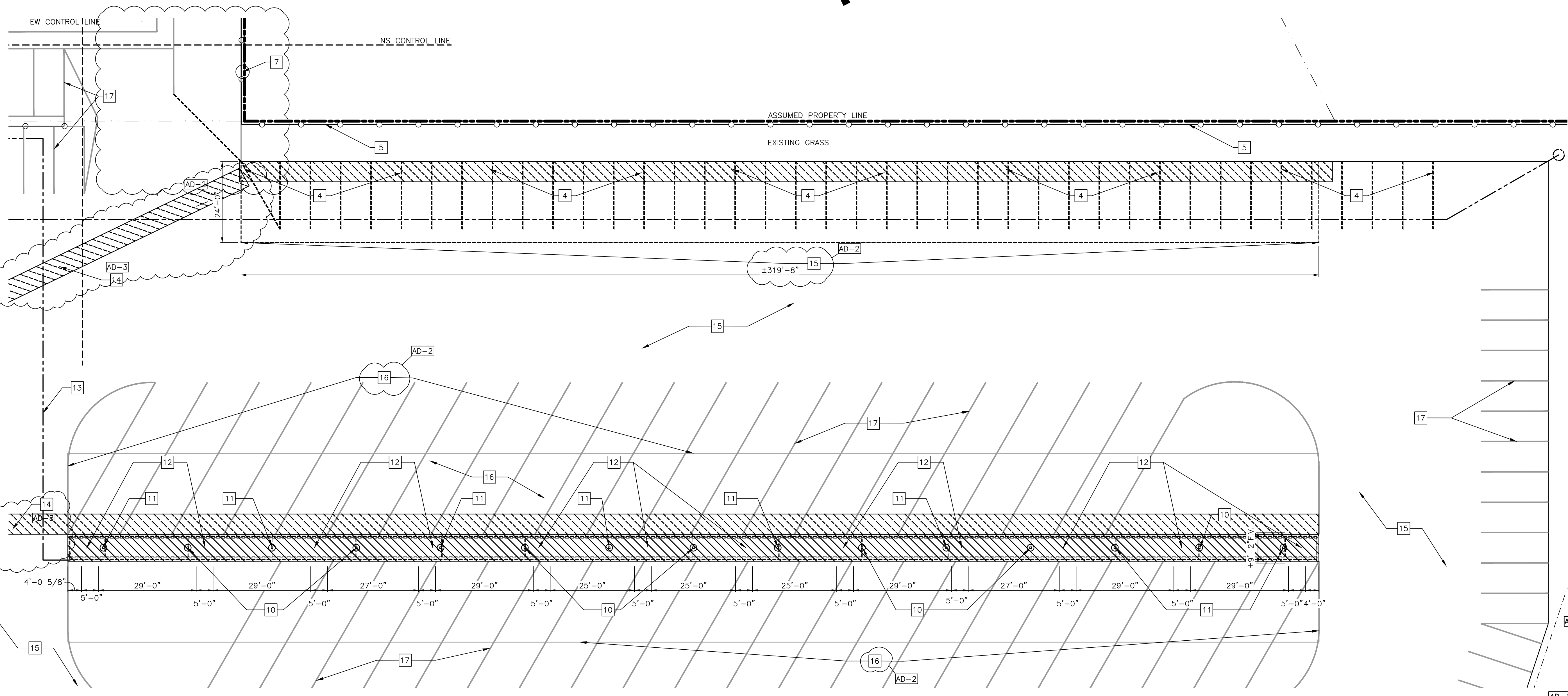
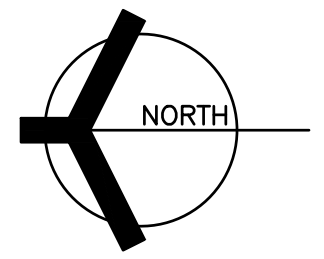
GIBRALTAR DESIGN SHEET

C-103



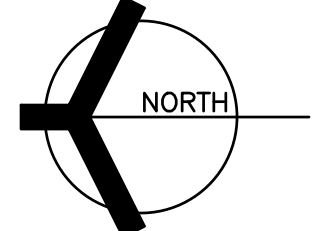
ENLARGED SITE PLAN
SCALE: 1/16" = 1'-0"

1
C-103



ENLARGED SITE PLAN
SCALE: 1/16" = 1'-0"

2
C-103



GENERAL DEMOLITION NOTES:

- THE CONTRACTOR SHALL BE RESPONSIBLE FOR REMOVAL AND DISPOSAL OFF-SITE OF ALL ITEMS SHOWN ON THE DEMOLITION PLAN INCLUDING ITEMS ENCOUNTERED DURING EXCAVATION OF BUILDING FOUNDATIONS AND UTILITY PLACEMENT.
- PRIOR TO STARTING DEMOLITION, IT IS THE RESPONSIBILITY OF THE CONTRACTOR TO OBTAIN ALL PERMITS REQUIRED BY LOCAL GOVERNMENTAL AGENCIES.
- THE CONTRACTOR SHALL COORDINATE WITH LOCAL UTILITY COMPANIES FOR THE DISCONNECTION AND REMOVAL OF SERVICES TO EXISTING STRUCTURES.
- ITEMS SHOWN ON THE DEMOLITION PLAN TO BE SALVAGED SHALL BE TRANSPORTED TO LOCATION SPECIFIED BY THE OWNER OR HIS/HER REPRESENTATIVE.
- ITEMS OF SALVAGEABLE VALUE TO THE CONTRACTOR MAY BE REMOVED WITH THE OWNER OR HIS/HER REPRESENTATIVE'S PERMISSION. THE CONTRACTOR SHALL NOT STORE THESE ITEMS ON SITE.
- THE CONTRACTOR MAY NOT USE EXPLOSIVES OR BURN DEBRIS.
- CONDUCT DEMOLITION OPERATIONS TO ENSURE MINIMAL INTERFERENCE WITH ROADS, SIDEWALKS, AND OTHER ADJACENT OCCUPIED FACILITIES.
- DO NOT CLOSE OR OBSTRUCT ROADS, SIDEWALKS OR ANY OTHER OCCUPIED FACILITIES WITHOUT PERMISSION FROM THE LOCAL AUTHORITY HAVING JURISDICTION AND/OR PROPERTY OWNERS.
- THE CONTRACTOR SHALL ENSURE SAFE PASSAGE OF PERSON TRAVERING THROUGH OR AROUND THE CONSTRUCTION SITE.
- THE CONTRACTOR SHALL PROTECT FROM DAMAGE, SURROUNDING STRUCTURES, UTILITIES AND OTHER FACILITIES DURING DEMOLITION AND REMOVAL OPERATIONS.
- UTILITIES SHALL BE REMOVED AND BACKFILLED WITH APPROVED BACKFILL MATERIAL. BACKFILL MATERIAL SHALL BE PLACED IN MAXIMUM EIGHT INCH LIFTS AND COMPACTED IN ACCORDANCE WITH THE GEOTECHNICAL REPORT OR A MINIMUM OF 95% OF A STANDARD PROCTOR.
- THE CONTRACTOR SHALL BE RESPONSIBLE FOR ENSURING THE CONSTRUCTION SITE AND SURROUNDING AREAS ARE FREE OF ACCUMULATED DEBRIS.

DEMOLITION PLAN NOTES:

- (ALL PLAN NOTES MAY NOT BE INDICATED ON THIS SHEET.)
- REMOVE PORTION OF CONCRETE WALK. COORDINATE WITH PLUMBING.
 - REMOVE PORTION OF ASPHALT FULL DEPTH. COORDINATE WITH PLUMBING.
 - REMOVE DOWNSPOUT. CAP STORMWATER LINE GAS TIGHT. PATCH GUTTER.
 - PAINT EXISTING PARKING STRIPES WITH ASPHALTIC PAINT. PREPARE FOR NEW PAINT STRIPES.
 - EXISTING CHAIN LINK FENCE TO REMAIN. NO WORK.
 - EXISTING GATE TO REMAIN. NO WORK.
 - EXISTING STORM MANHOLE TO REMAIN. NO WORK.
 - EXISTING ELECTRICAL TRANSFORMER TO REMAIN. NO WORK.
 - ALTERNATE: REMOVE PORTION OF ASPHALT FULL DEPTH. PREP FOR CONCRETE WORK.
 - EXISTING ELECTRICAL RACEMAY COLUMN TO REMAIN. NO WORK.
 - REMOVE LIGHTS AND WIRING. REFER TO ELECTRICAL DEMOLITION DRAWINGS.
 - CUT POLE OFF 3" ABOVE NEW CANOPY SOFFIT. COORDINATE WITH CANOPY DRAWINGS BY OTHERS.
 - SAW-CUT CONCRETE ISLAND FOR CANOPY STRUCTURE. COORDINATE WITH CANOPY CONTRACTOR.
 - APPROXIMATE LOCATION OF EXISTING CONDUIT AND WIRE FOR ELECTRICAL AND CIVIL.
 - SAWCUT CONCRETE AND/OR ASPHALT MINIMUM 6'-0" W FOR STORM PIPE. REFER TO SHEET C-106.
 - EXISTING ASPHALT TO REMAIN.
 - EXISTING CONCRETE SURFACE TO REMAIN.
 - EXISTING STRIPING TO REMAIN. REPAINT IF ALTERNATE ACCEPTED.

Monday, 3/10/2025 - 5:29 PM - LAST SAVED BY: FITZGERALD
V:\24-110 CROWN POINT CSC - TRANSPORTATION CENTER
AUTOCAD\CAD\103.DWG



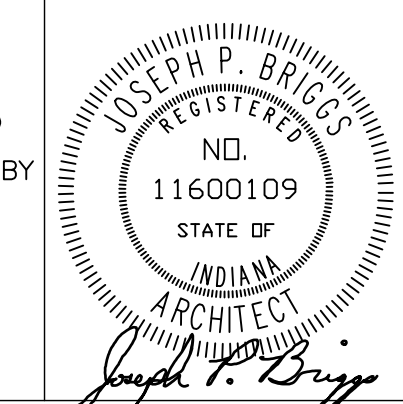
GIBRALTAR
DESIGN
ARCHITECTURE • ENGINEERING • INTERIOR DESIGN

PROJECT
CROWN POINT DISTRICT PROJECT - TRANSPORTATION CENTER IMPROVEMENTS, CPHS EIFS IMPROVEMENTS, AND LAKE STREET ES EIFS IMPROVEMENTS

CROWN POINT COMMUNITY SCHOOL CORPORATION
CROWN POINT, INDIANA

GIBRALTAR DESIGN
9102 N. Meridian St., Ste. 300
Indianapolis, IN 46260
Homepage: www.GibraltarDesign.com
Email: info@GibraltarDesign.com
Phone: 317.580.5777 Fax: 317.580.5778

PROJECT
24-110
DATE
02/20/25
COORDINATED BY
JKF
DRAWN BY
CJA PCD
CHECKED BY
JKF



COPYRIGHT NOTICE:
THE CONCEPTS, DESIGNS, PLANS, DETAILS, ETC. SHOWN ON THIS DOCUMENT ARE THE PROPERTY OF GIBRALTAR DESIGN AND WERE CREATED FOR USE ON THIS SPECIFIC PROJECT. NONE OF THIS INFORMATION SHALL BE USED BY ANY PERSON OR FIRM FOR ANY PURPOSE WITHOUT THE EXPRESS WRITTEN CONSENT OF GIBRALTAR DESIGN. THE OWNER MAY RETAIN COPIES FOR INFORMATION AND REFERENCE IN CONNECTION ONLY WITH THIS PROJECT.

MARK	DATE	ISSUED FOR
AD-1	02/27/25	ADDENDUM NO. 1
AD-2	03/06/25	ADDENDUM NO. 2
AD-3	03/10/25	ADDENDUM NO. 3

DRAWING
ENLARGED SITE PLANS

PROJECT
CROWN POINT DISTRICT PROJECT - TRANSPORTATION CENTER IMPROVEMENTS

GIBRALTAR DESIGN SHEET
C-104

GENERAL PLAN NOTES:

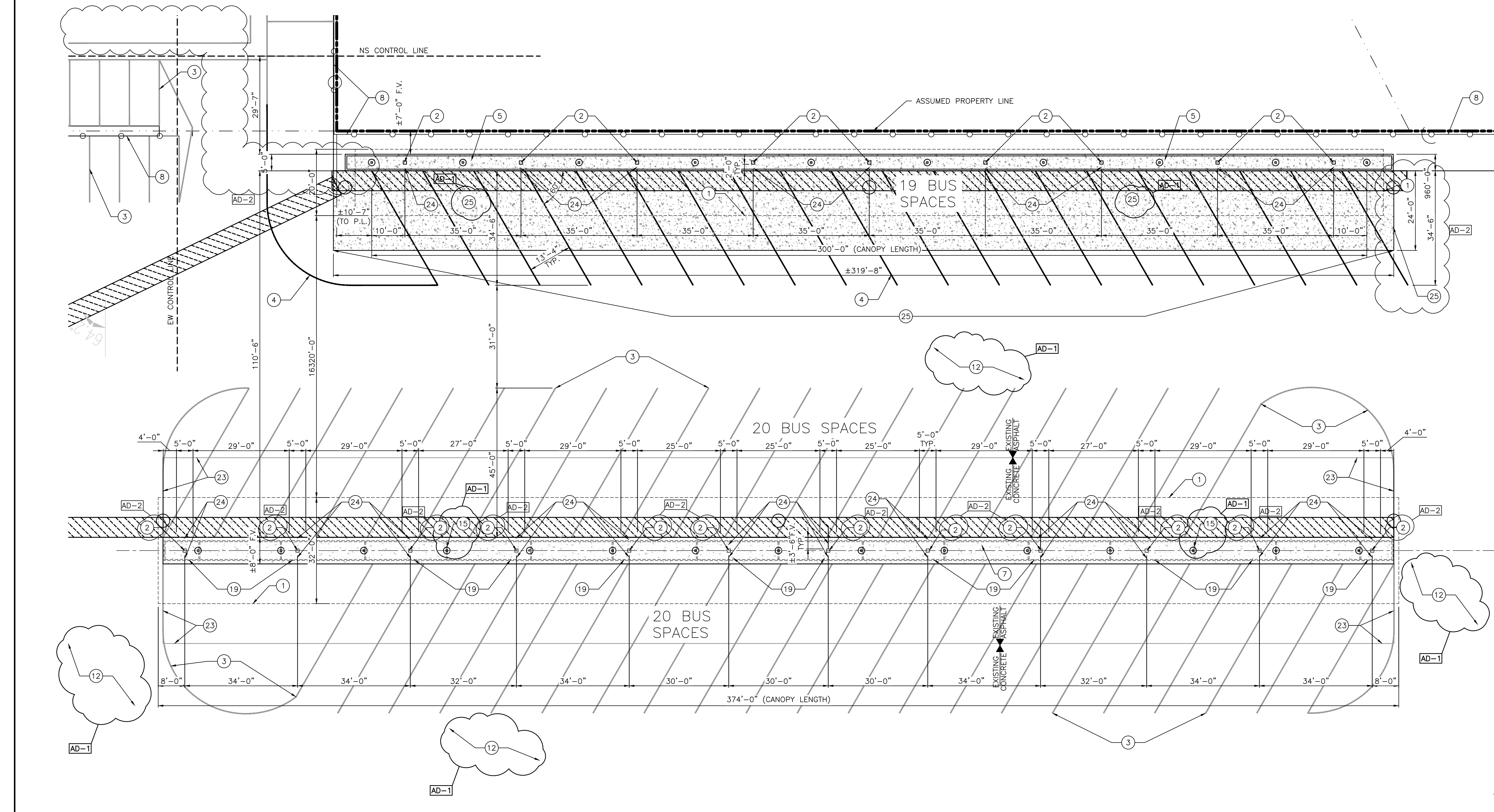
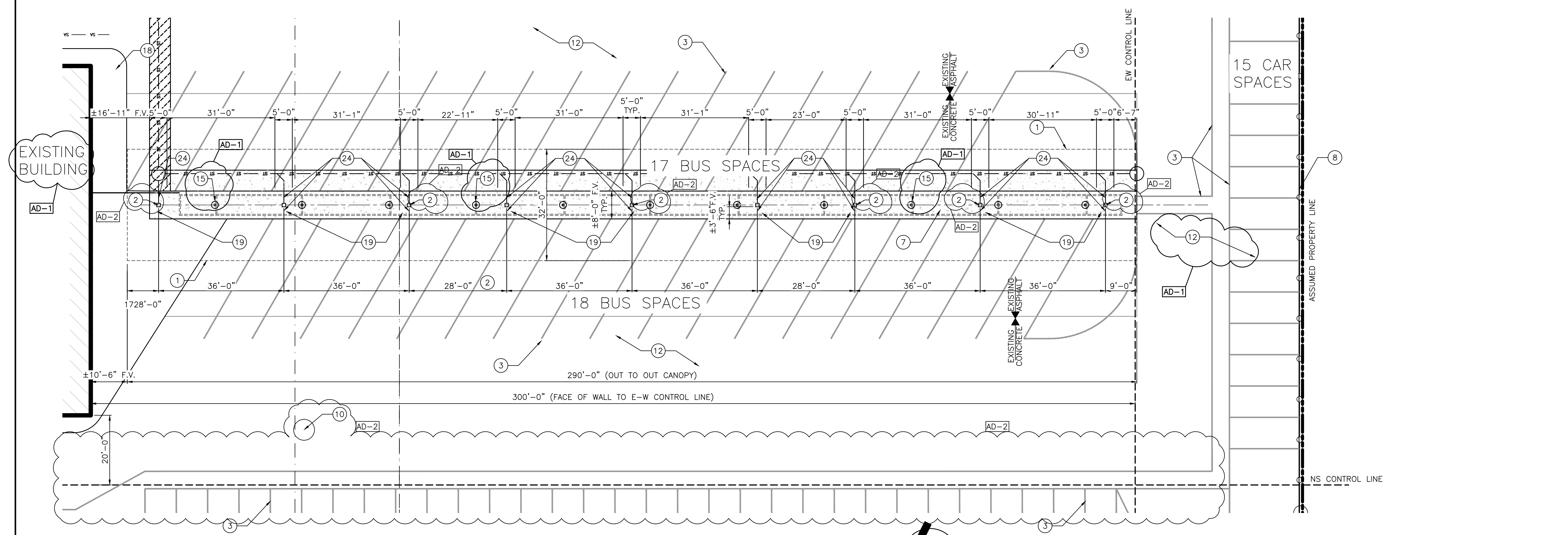
- A. FOR GENERAL PROJECT NOTES, MATERIAL INDICATIONS LEGEND, SYMBOL LEGEND, ABBREVIATIONS, ETC., REFER TO C SERIES SHEETS.
- B. CONTRACTOR IS TO MATCH EXISTING GRADES AND DRAINAGE PATHWAYS.
- C. ALL CONCRETE, SIDEWALK, AND CURB REMOVED SHALL BE SAWCUT FULL DEPTH.

PAVING LEGEND:

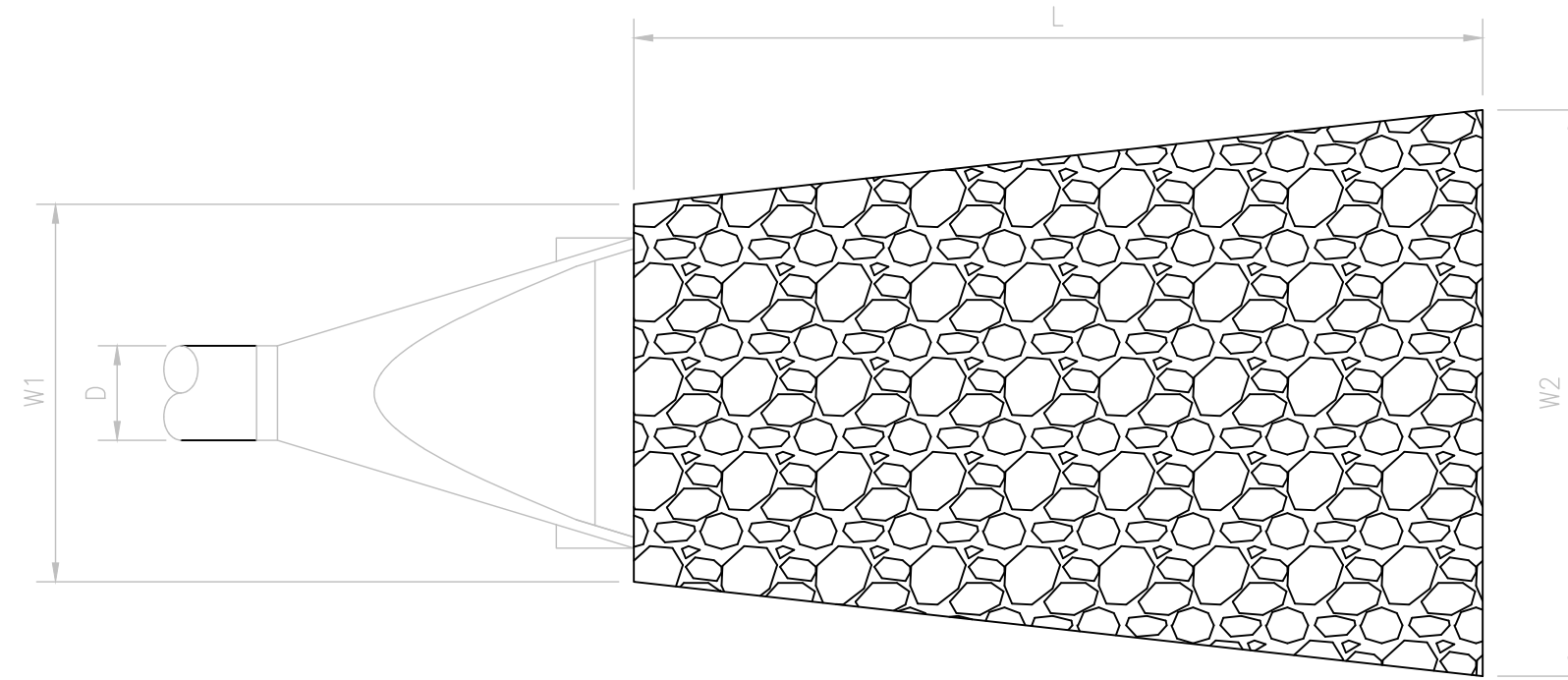
- REFER TO PLAN NOTE 12
- CONCRETE

PLAN NOTES:

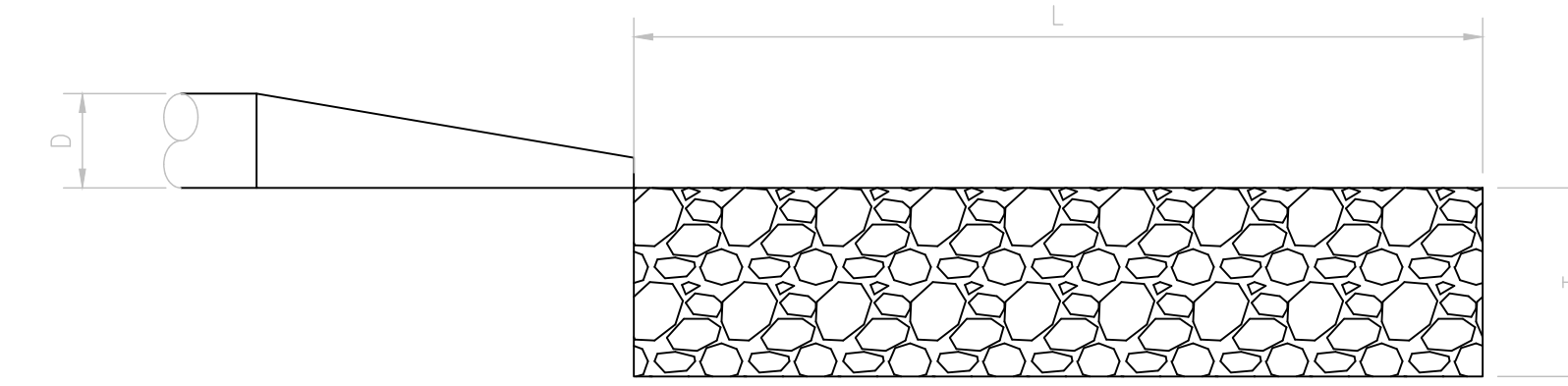
- (ALL PLAN NOTES MAY NOT BE INDICATED ON THIS SHEET.)
- 1 EDGE OF CANOPY ABOVE.
 - 2 STEEL CANOPY COLUMN BY CANOPY CONTRACTOR, TYPICAL.
 - 3 EXISTING PAINTED STRIPING TO REMAIN.
 - 4 4" PAINTED STRIPE - YELLOW.
 - 5 6" THICK CONCRETE ISLAND WITH 6" CURB.
 - 6 HEAVY DUTY ASPHALT. PATCH AND REPAIR.
 - 7 EXISTING CONCRETE ISLAND TO REMAIN.
 - 8 EXISTING CHAIN LINK FENCE TO REMAIN, NO WORK.
 - 9 ELECTRICAL FOR BUS BLOCK HEATERS, REFER TO ELECTRICAL DRAWINGS. PROVIDE SILT BARRIER DURING CONSTRUCTION.
 - 10 APPROXIMATE LOCATION OF EXISTING STORM MANHOLE TO REMAIN.
 - 11 PATCH EXISTING HEAVY DUTY ASPHALT. COORDINATE WITH ELECTRICAL.
 - 12 BASE BID: PATCH, REPAIR, AND SEAL EXISTING ASPHALT. ALTERNATE: MILL AND REPAVE TOP 2" OF ASPHALT.
 - 13 APPROXIMATE EDGE OF EXISTING ASPHALT.
 - 14 NOT USED.
 - 15 EXISTING CONCRETE BASE AND STEEL POLE FOR EXISTING ELECTRICAL RACEWAY TO REMAIN. PROTECT DURING CONSTRUCTION.
 - 16 REMOVE LIGHT FIXTURES FROM LIGHT POLE AND CUT POLE ±15'-3" ABOVE CONCRETE ISLAND.
 - 17 EXISTING GATE TO REMAIN. NO WORK.
 - 18 EXISTING CONCRETE SIDEWALK TO REMAIN, NO WORK.
 - 19 CONCRETE INFILL. PATCH AND REPAIR SURROUNDING CONCRETE. MATCH EXISTING.
 - 20 EXISTING ELECTRICAL TRANSFORMER TO REMAIN. NO WORK.
 - 21 PATCH ASPHALT / CONCRETE PARKING SURFACE REFER TO DETAILS C-104.
 - 22 EXISTING HEAD WALL TO REMAIN. NO WORK.
 - 23 EXISTING CONCRETE SURFACE TO REMAIN, NO WORK.
 - 24 CAST IRON GRATE AND TRENCH DRAIN AT EACH CANOPY COLUMN.
 - 25 BASE BID: ASPHALT DRIVE TO REMAIN. PATCH TO MATCH EXISTING AT NEW BUS ISLAND. ALTERNATE: CONCRETE APRON/PAD.



Monday, 3/10/2025 - 5:29 PM - LAST SAVED BY: JFZGERALD
Y:\24-110 CROWN POINT CSC - TRANSPORTATION CENTER
AUTOCAD\CAD\C-104.DWG



OUTLET PROTECTION PLAN VIEW
NOT TO SCALE



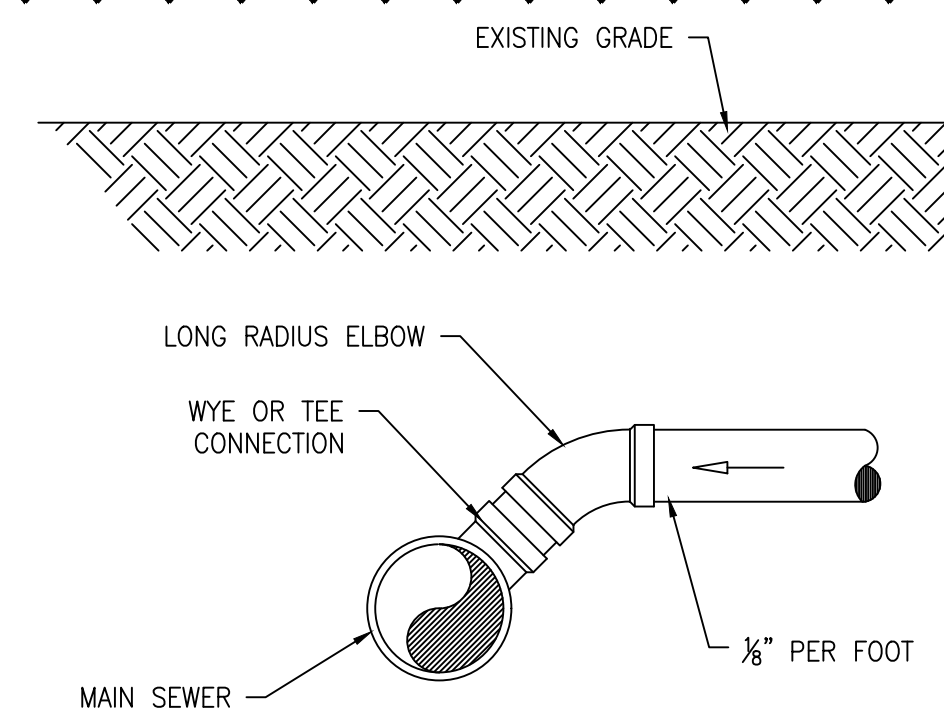
OUTLET PROTECTION SECTION VIEW
NOT TO SCALE

OUTLET PROTECTION INFORMATION					
PIPE SIZE "D" (IN.)	AVERAGE RIPRAP DIA. (IN.)	APRON WIDTH "W1" (FT.)	APRON WIDTH "W2" (FT.)	APRON LENGTH "L" (FT.)	APRON THICKNESS "T" (IN.)
12 & 18	8	4	6	13	10
24	10	8	10	17	12

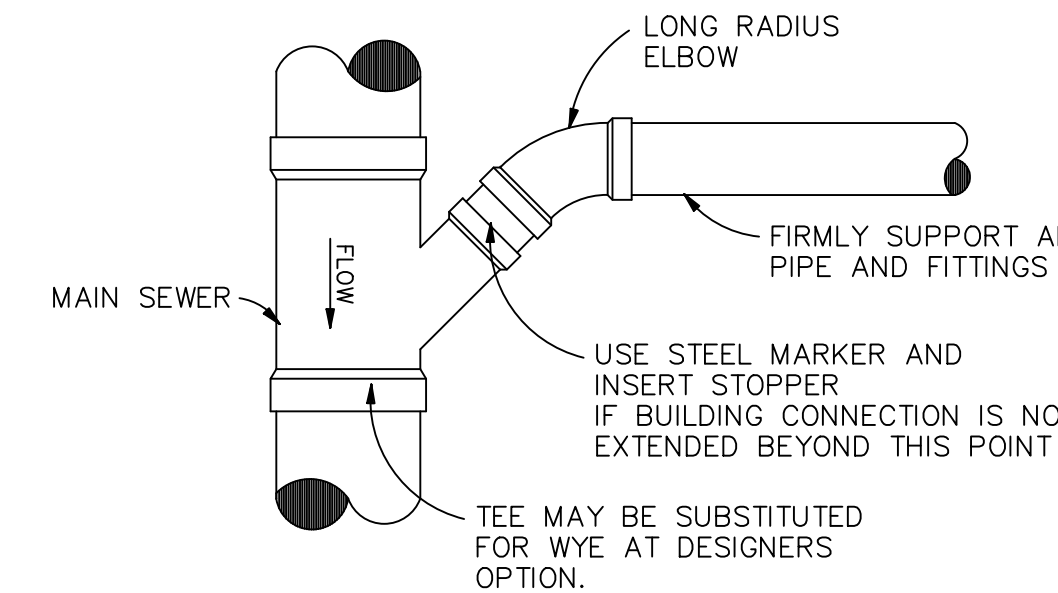
- NOTES:
1. GEOTEXTILE FABRIC SHALL BE INSTALLED BELOW AND AROUND THE SIDES OF THE REQUIRED RIPRAP.
 2. RIP RAP SHALL BE A WELL-GRADED MIXTURE OF STONE WITH 50 PERCENT OF THE STONE PIECES, BY WEIGHT, LARGER THAN THE #50 SIZE AND THE DIAMETER OF THE LARGEST STONE EQUAL TO 1.5 TIMES THE #50 SIZE.
 3. EXCAVATE FOUNDATION AND APRON AREA SUBGRADES BELOW DESIGN ELEVATION TO ALLOW FOR THICKNESS OF THE FILTER MEDIUM AND RIPRAP.
 4. COMPACT ANY FILL USED IN SUBGRADE PREPARATION TO THE DENSITY OF SURROUNDING UNDISTURBED SOIL MATERIAL.
 5. PLACE GEOTEXTILE FABRIC ON SUBGRADE MATERIAL AND INSTALL RIPRAP TO THE CORRECT LINES AND ELEVATIONS. BLEND RIPRAP SMOOTHLY TO THE SURROUNDING GRADE.

OUTLET DETAILS
SCALE: N.T.S.

3
C-105



SECTIONAL VIEW



PLAN VIEW

WYE CONNECTION DETAIL
SCALE: N.T.S.

2
C-105

GENERAL PLAN NOTES:

- FOR GENERAL PROJECT NOTES, MATERIAL INDICATIONS LEGEND, SYMBOL LEGEND, ABBREVIATIONS, ETC., REFER TO C SERIES SHEETS.
- CONTRACTOR IS TO MATCH EXISTING GRADES AND DRAINAGE PATHWAYS.
- ALL CONCRETE, SIDEWALK, AND CURB REMOVED SHALL BE SAWCUT FULL DEPTH.
- PIPE SIZE AND INVERTS ARE UNKNOWN. FIELD VERIFY.
- PROVIDE EROSION CONTROL AS SHOWN OR REQUIRED BY CITY OF CROWN POINT STANDARDS.

PLAN NOTES:

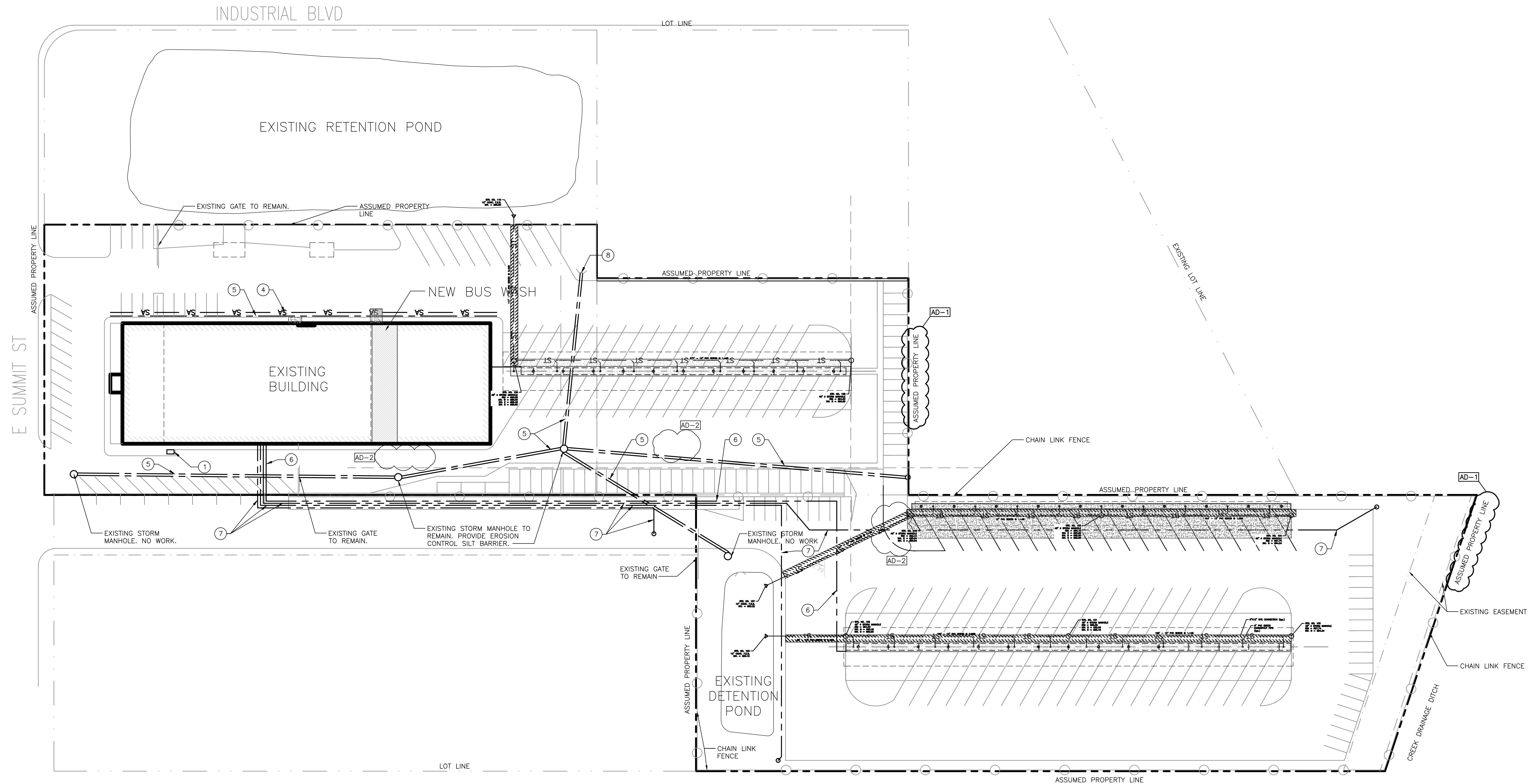
- (ALL PLAN NOTES MAY NOT BE INDICATED ON THIS SHEET.)
- EXISTING ELECTRICAL TRANSFORMER TO REMAIN. NO WORK.
 - NOT USED.
 - NOT USED.
 - APPROXIMATE LOCATION OF EXISTING SANITARY PIPING TO REMAIN. PIPE SIZE AND DEPTH UNKNOWN.
 - APPROXIMATE LOCATION OF EXISTING STORM PIPING TO REMAIN. PIPE SIZE AND DEPTH UNKNOWN.
 - APPROXIMATE ROUTE OF EXISTING CONDUIT FOR BUS BLOCK HEATERS. SPREADER SHEET AND DEPTH UNKNOWN.
 - APPROXIMATE ROUTE OF EXISTING UNDERGROUND ELECTRICAL AND CCTV CONDUIT SIZE AND DEPTH UNKNOWN.
 - EXISTING STORM HEAD WALL TO REMAIN. NO WORK.

AD-1

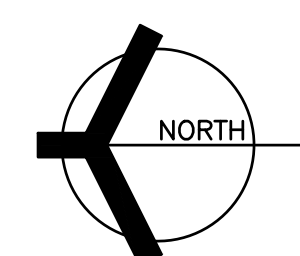
AD-2

AD-3

AD-3



SITE UTILITY PLAN
SCALE: 1" = 40'-0"



GIBRALTAR
DESIGN
ARCHITECTURE • ENGINEERING • INTERIOR DESIGN

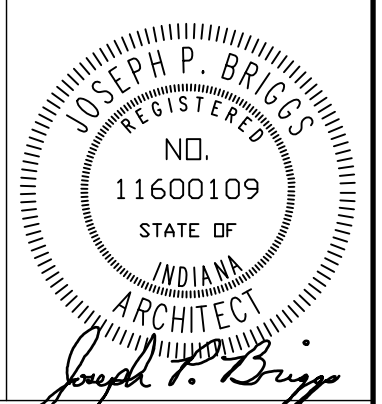
PROJECT
CROWN POINT DISTRICT PROJECT - TRANSPORTATION CENTER IMPROVEMENTS, CPHS EIFS IMPROVEMENTS, AND LAKE STREET ES EIFS IMPROVEMENTS

CROWN POINT COMMUNITY SCHOOL CORPORATION
CROWN POINT, INDIANA

GIBRALTAR DESIGN

9102 N. Meridian St., Ste. 300
Indianapolis, IN 46260
Homepage: www.GibraltarDesign.com
Email: info@GibraltarDesign.com
Phone: 317.580.5777 Fax: 317.580.5778

PROJECT: 24-110
DATE: 02/20/25
COORDINATED BY: JKF
DRAWN BY: CJA PCD
CHECKED BY: JKF



COPYRIGHT NOTICE:
THE CONCEPTS, DESIGNS, PLANS, DETAILS, ETC. SHOWN ON THIS DOCUMENT ARE THE PROPERTY OF GIBRALTAR DESIGN AND WERE CREATED FOR USE ON THIS SPECIFIC PROJECT. NONE OF THIS INFORMATION SHALL BE USED BY ANY PERSON OR FIRM FOR ANY PURPOSE WITHOUT THE EXPRESS WRITTEN CONSENT OF GIBRALTAR DESIGN. THE OWNER MAY RETAIN COPIES FOR INFORMATION AND REFERENCE IN CONNECTION ONLY WITH THIS PROJECT.

REVISIONS

MARK	DATE	ISSUED FOR
AD-1	02/27/25	ADDENDUM NO. 01
AD-2	03/06/25	ADDENDUM NO. 02
AD-3	03/10/25	ADDENDUM NO. 03

DRAWING
SITE UTILITY PLAN

PROJECT
CROWN POINT DISTRICT PROJECT - TRANSPORTATION CENTER IMPROVEMENTS

GIBRALTAR DESIGN SHEET
C-105

GENERAL PLAN NOTES: AD-1

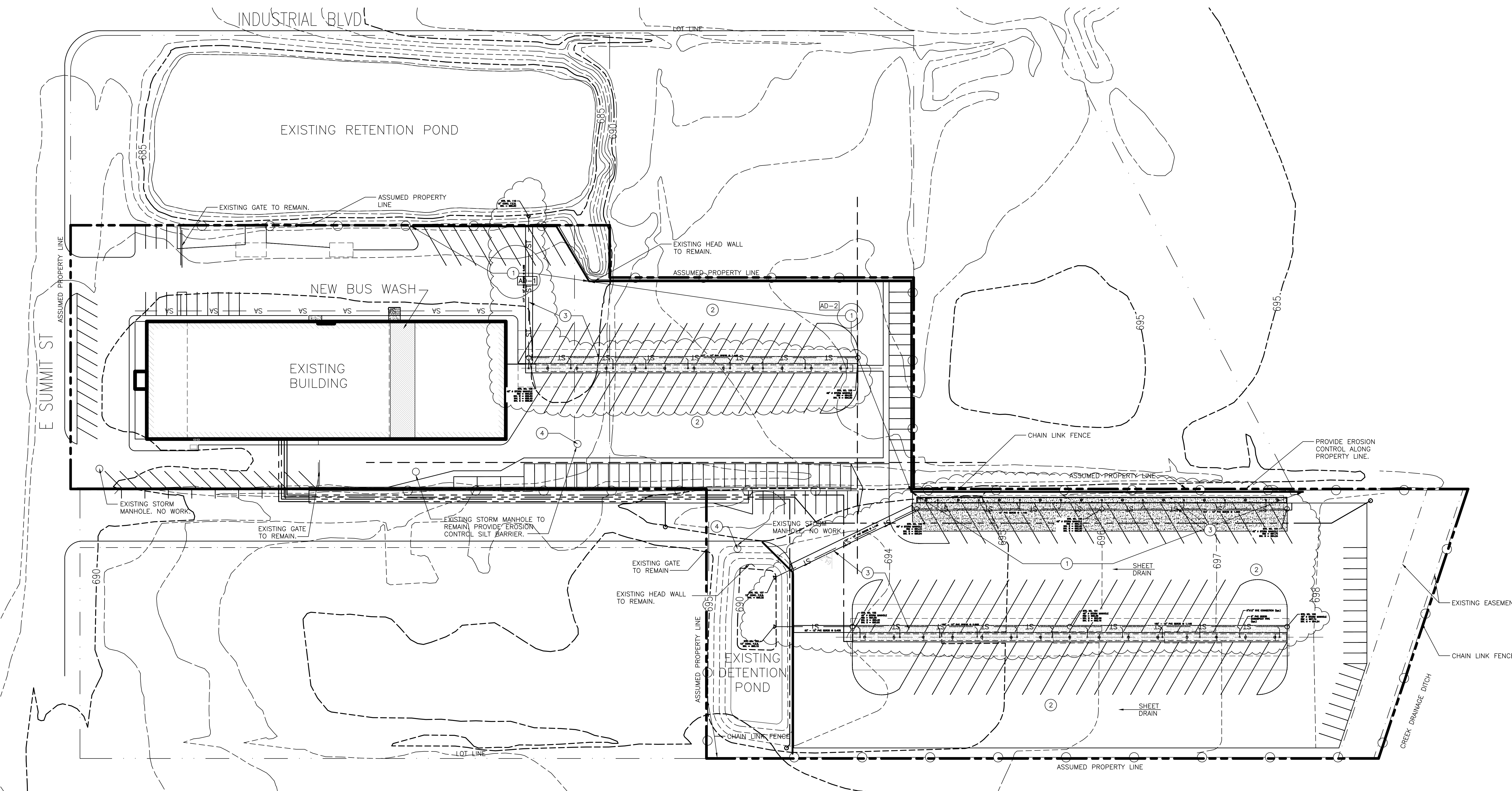
- A. FOR GENERAL PROJECT NOTES, MATERIAL INDICATIONS LEGEND, SYMBOL LEGEND, ABBREVIATIONS, ETC., REFER TO C SERIES SHEETS.
- B. CONTRACTOR IS TO MATCH EXISTING GRADES AND DRAINAGE PATHWAYS.
- C. ALL CONCRETE, SIDEWALK, AND CURB REMOVED SHALL BE SAWCUT FULL DEPTH.
- D. PIPE SIZE AND INVERTS ARE UNKNOWN. FIELD VERIFY.
- E. PROVIDE EROSION CONTROL AS SHOWN OR REQUIRED BY CITY OF CROWN POINT STANDARDS.

PLAN NOTES: AD-1

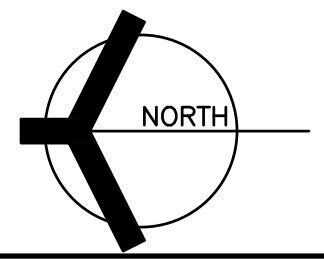
(ALL PLAN NOTES MAY NOT BE INDICATED ON THIS SHEET.)

- 1 PROVIDE SILT FENCE OR FILTER SOCK ACCORDING TO CITY OF CROWN POINT EROSION CONTROL STANDARDS.
- 2 BASE BID; EXISTING ASPHALT TO REMAIN.
- 3 ALTERNATE MILL AND REPAVE.
- 4 NEW STORM PIPE SEE DETAILS SHEET C-105.
- 5 PROVIDE INLET BASKET.

SITE GRADING IS ASSUMED, TAKEN FROM 2008 EXISTING DRAWINGS. CONTRACTOR TO FIELD-VERIFY.



SITE GRADING, DRAINAGE, AND EROSION CONTROL PLAN
SCALE: 1" = 40'-0"



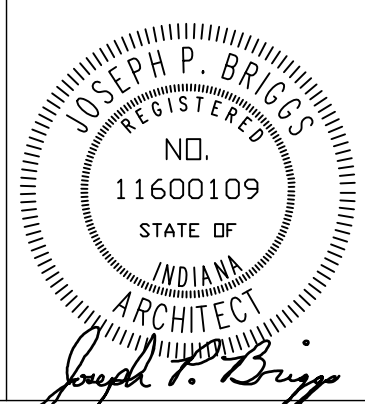
PROJECT
CROWN POINT DISTRICT PROJECT - TRANSPORTATION CENTER IMPROVEMENTS, CPHS EIFS IMPROVEMENTS, AND LAKE STREET ES EIFS IMPROVEMENTS

CROWN POINT COMMUNITY SCHOOL CORPORATION
CROWN POINT, INDIANA

GIBRALTAR DESIGN

9102 N. Meridian St., Ste. 300
Indianapolis, IN 46260
Homepage: www.GibraltarDesign.com
Email: info@GibraltarDesign.com
Phone: 317.580.5777 Fax: 317.580.5778

PROJECT: 24-110
DATE: 02/20/25
COORDINATED BY: JFK
DRAWN BY: CJA
CHECKED BY: JFK



COPYRIGHT NOTICE:
THE CONCEPTS, DESIGNS, PLANS, DETAILS, ETC. SHOWN ON THIS DOCUMENT ARE THE PROPERTY OF GIBRALTAR DESIGN AND WERE CREATED FOR USE ON THIS SPECIFIC PROJECT. NONE OF THIS INFORMATION SHALL BE USED BY ANY PERSON OR FIRM FOR ANY PURPOSE WITHOUT THE EXPRESS WRITTEN CONSENT OF GIBRALTAR DESIGN. THE OWNER MAY RETAIN COPIES FOR INFORMATION AND REFERENCE IN CONNECTION ONLY WITH THIS PROJECT.

REVISIONS

MARK	DATE	ISSUED FOR
AD-1	02/27/25	ADDENDUM NO. 01
AD-2	03/06/25	ADDENDUM NO. 02
AD-3	03/10/25	ADDENDUM NO. 03

DRAWING
SITE GRADING, DRAINAGE, AND EROSION CONTROL PLAN

PROJECT
CROWN POINT DISTRICT PROJECT - TRANSPORTATION CENTER IMPROVEMENTS

© GIBRALTAR DESIGN SHEET
C-106

Monday, 3/10/2025 - 5:29 PM - LAST SAVED BY: JFITZGERALD
Y:\24-110 CROWN POINT CSC - TRANSPORTATION CENTER
AUTOCAD\CAD\C-106.DWG

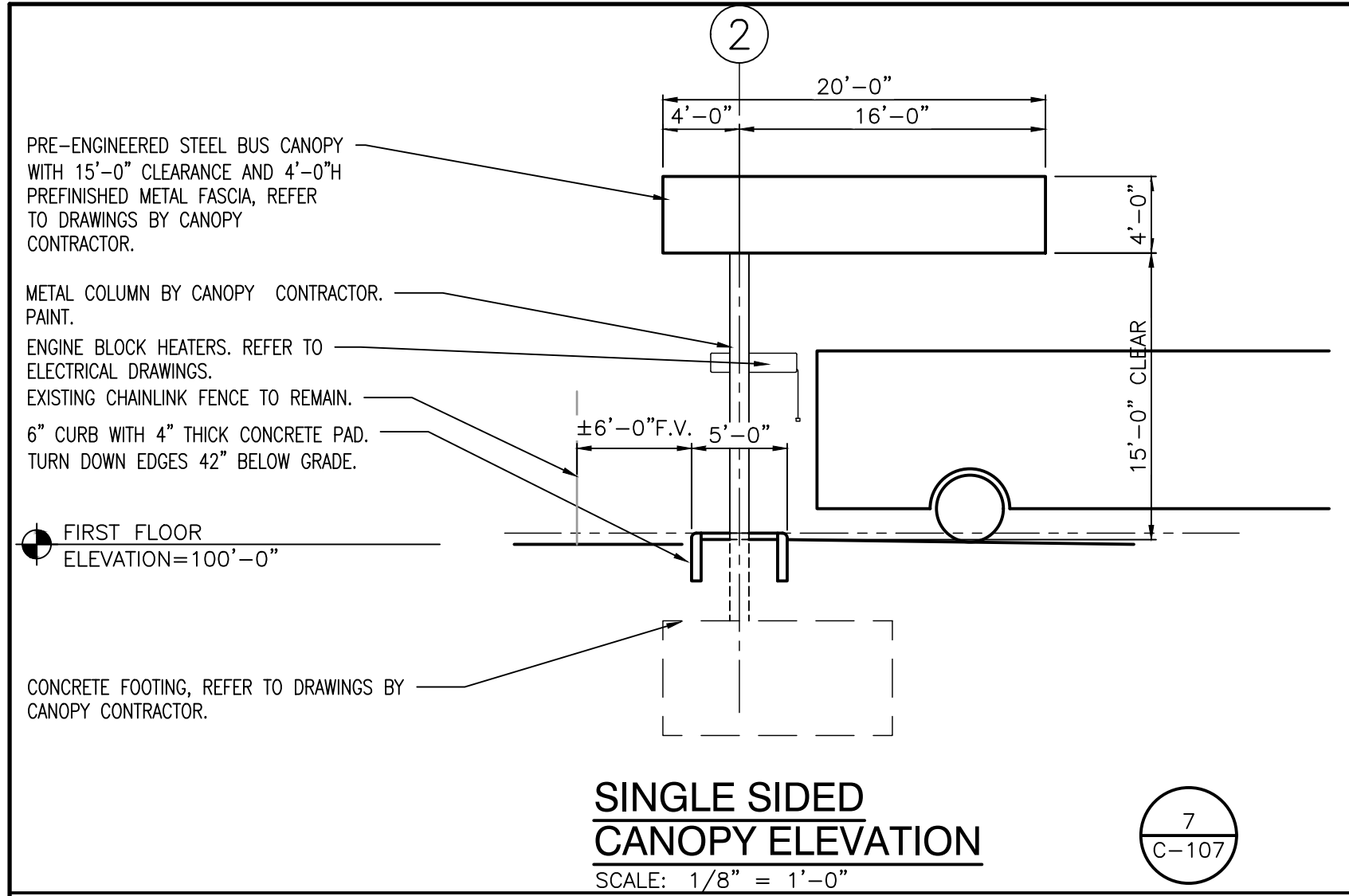


REVISIONS

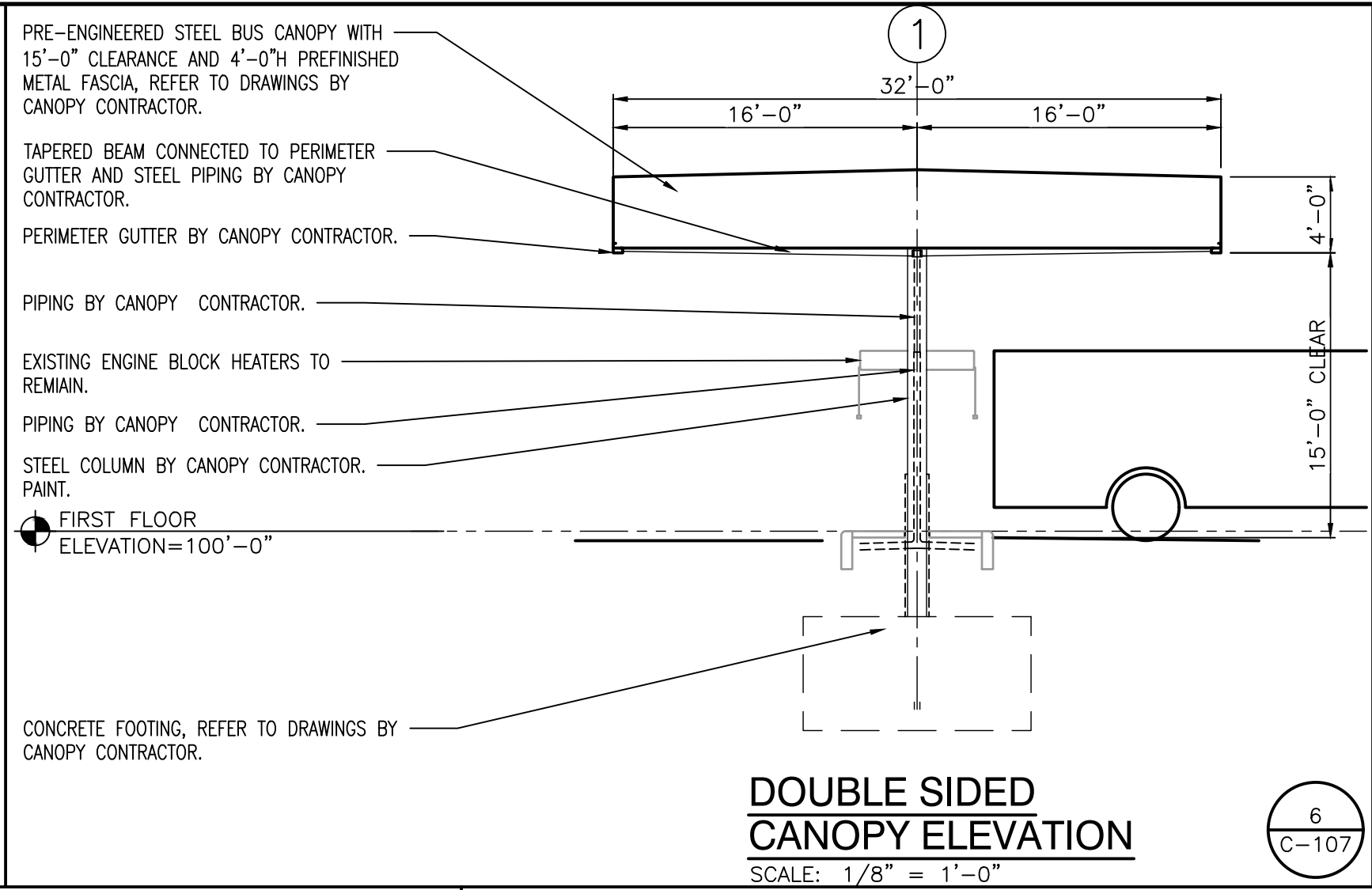
MARK	DATE	ISSUED FOR
AD-1	02/27/25	ADDENDUM NO. 01
AD-2	03/06/25	ADDENDUM NO. 02
AD-3	03/10/25	ADDENDUM NO. 03

GENERAL ELEVATION NOTES:

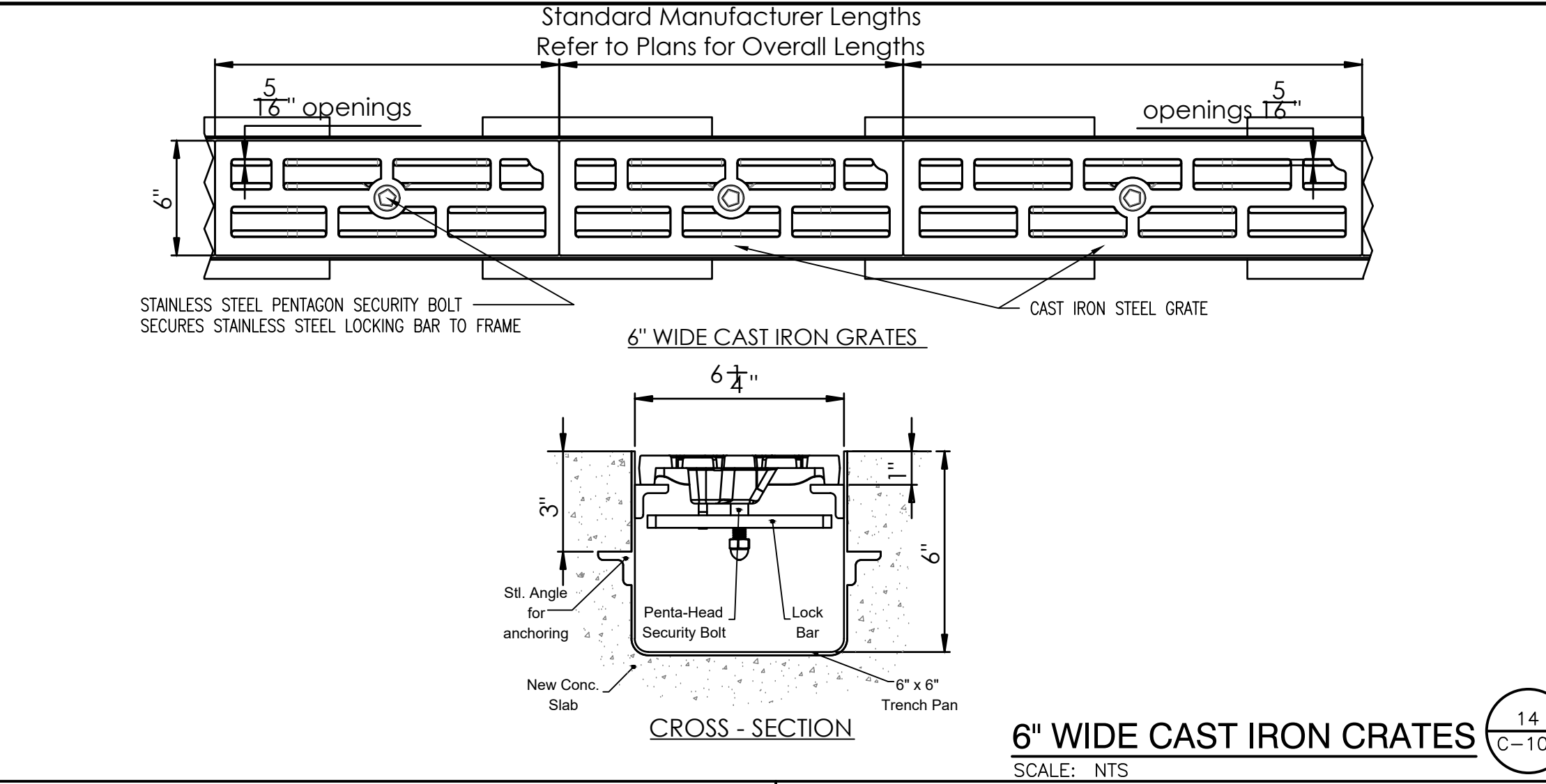
- A. REFER TO STRUCTURAL DRAWINGS FOR FOUNDATION WALLS AND FOOTINGS.
- B. REFER TO FLOOR PLANS FOR EXTERIOR WALL SECTIONS CUTS, UNLESS INDICATED OTHERWISE.
- C. FOR LOCATION AND MOUNTING HEIGHTS OF CAMERAS, SPEAKERS, LIGHTS, HORNS, ETC. REFER TO ELECTRICAL AND TECHNOLOGY DRAWINGS.
- D. ALL NEW FACE BRICK SHALL BE MODULAR RUNNING BOND UNLESS NOTED OTHERWISE.
- E. FINISH GRADE INDICATED ON ELEVATIONS ARE FOR DRAWING PURPOSES ONLY. REFER TO CIVIL DRAWINGS FOR ACTUAL GRADES. COORDINATE STEEP FLASHING WITH ACTUAL GRADES AS REQUIRED FOR CELL VENTS TO BE ABOVE GRADE.
- F. STEP BRICK LEDGE DOWN AS REQUIRED FOR LEDGE TO BE BELOW GRADE OR CONCRETE WALK. COORDINATE WITH CIVIL DRAWINGS.
- G. (C.J.) INDICATES CONTROL JOINT. REFER TO SPECIFICATIONS.
- H. (E.J.) INDICATES BUILDING EXPANSION JOINT. REFER TO PLAN DETAILS.



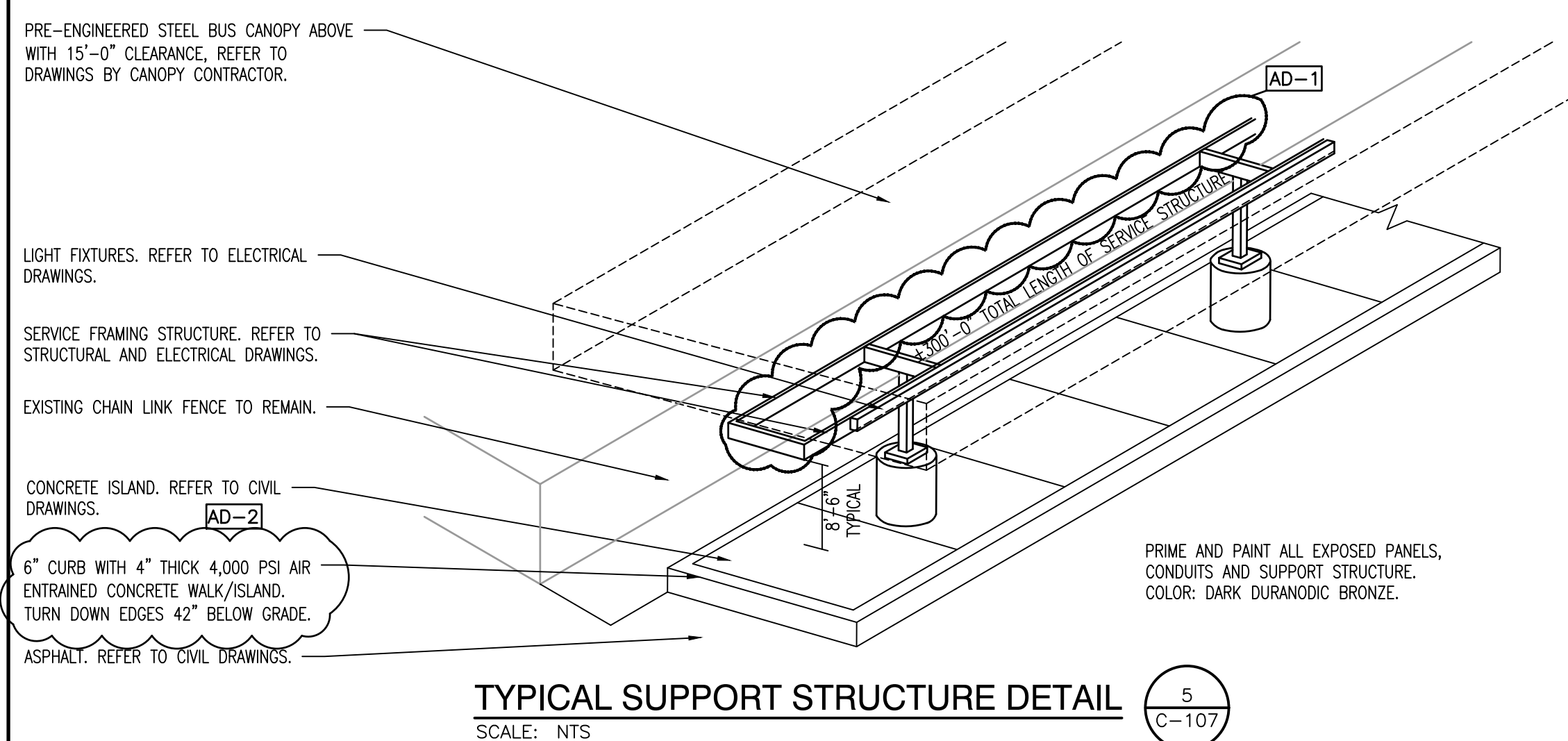
SINGLE SIDED CANOPY ELEVATION
SCALE: 1/8" = 1'-0"



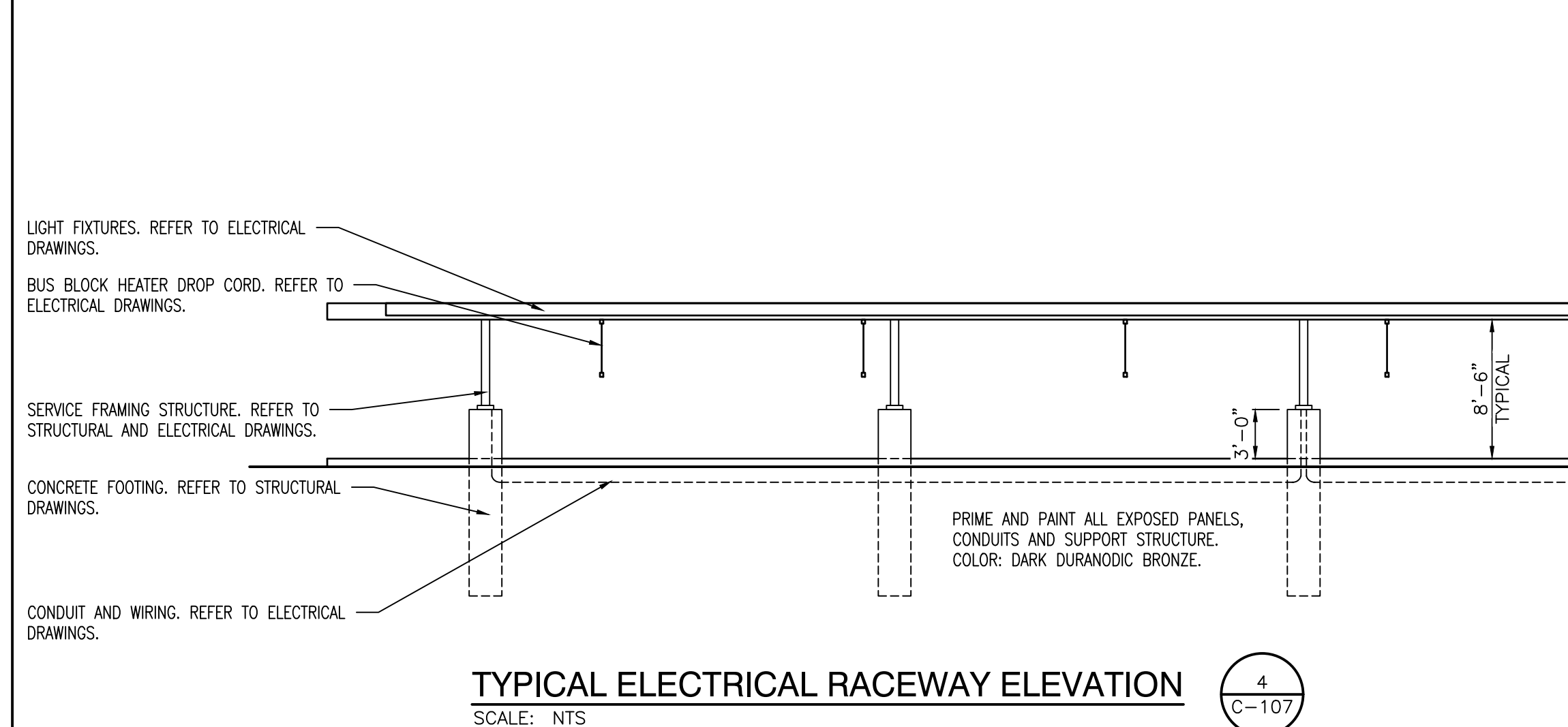
DOUBLE SIDED CANOPY ELEVATION
SCALE: 1/8" = 1'-0"



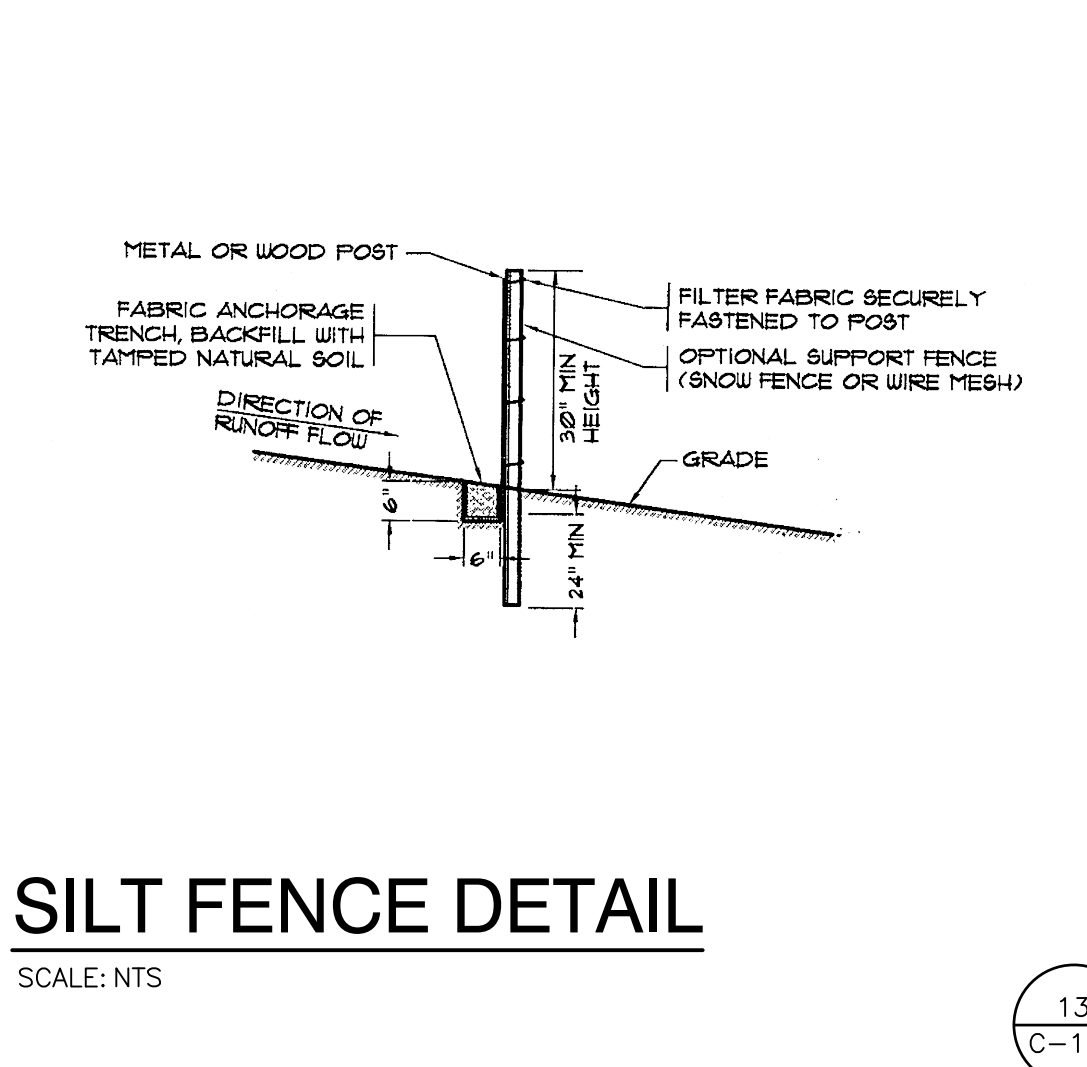
6" WIDE CAST IRON GRATES
SCALE: NTS



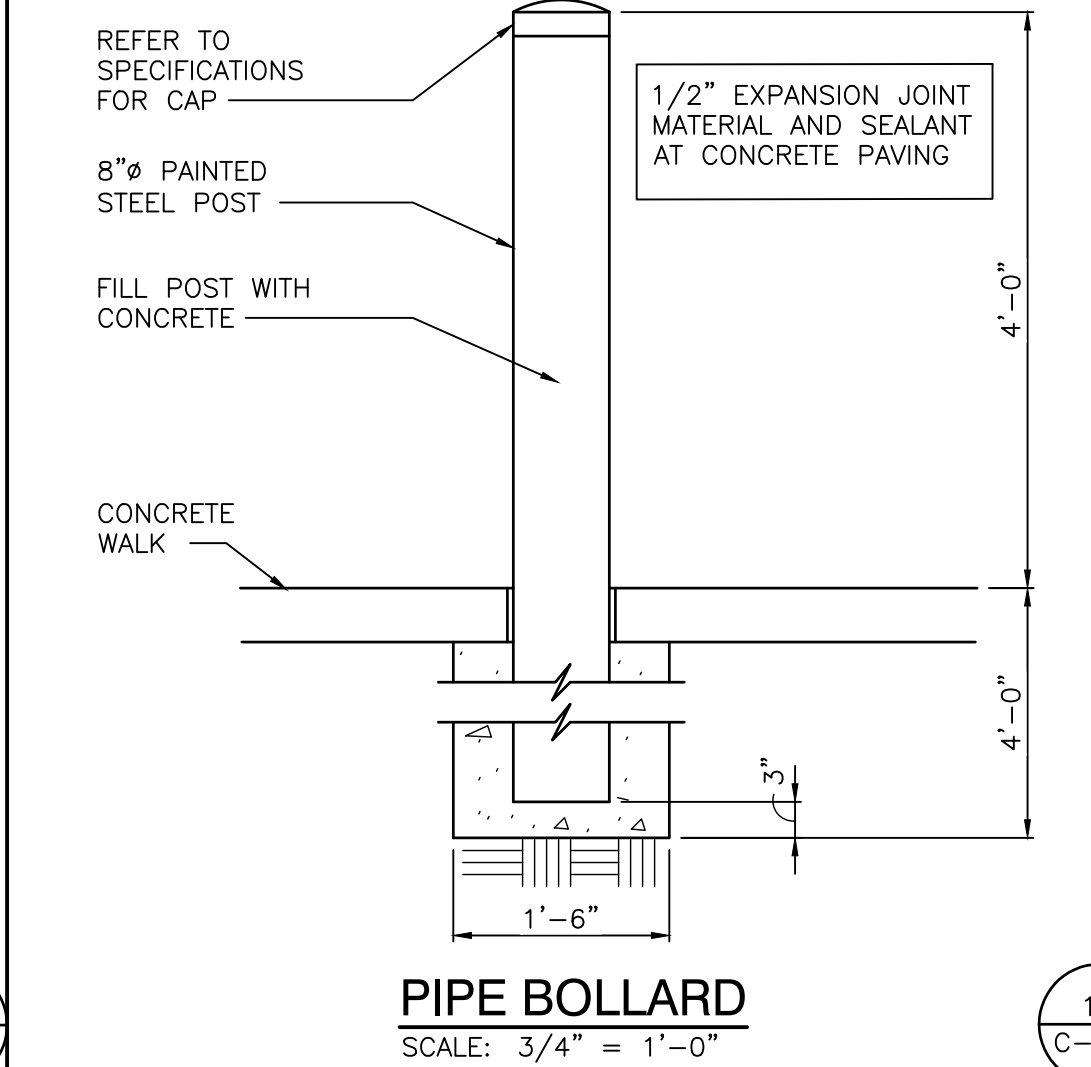
TYPICAL SUPPORT STRUCTURE DETAIL
SCALE: NTS



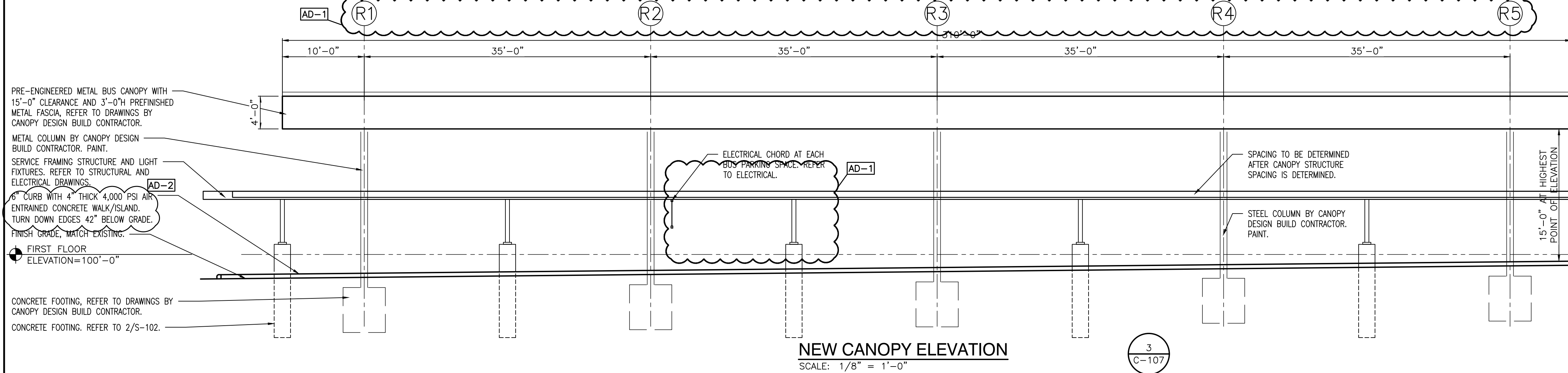
TYPICAL ELECTRICAL RACEWAY ELEVATION
SCALE: NTS



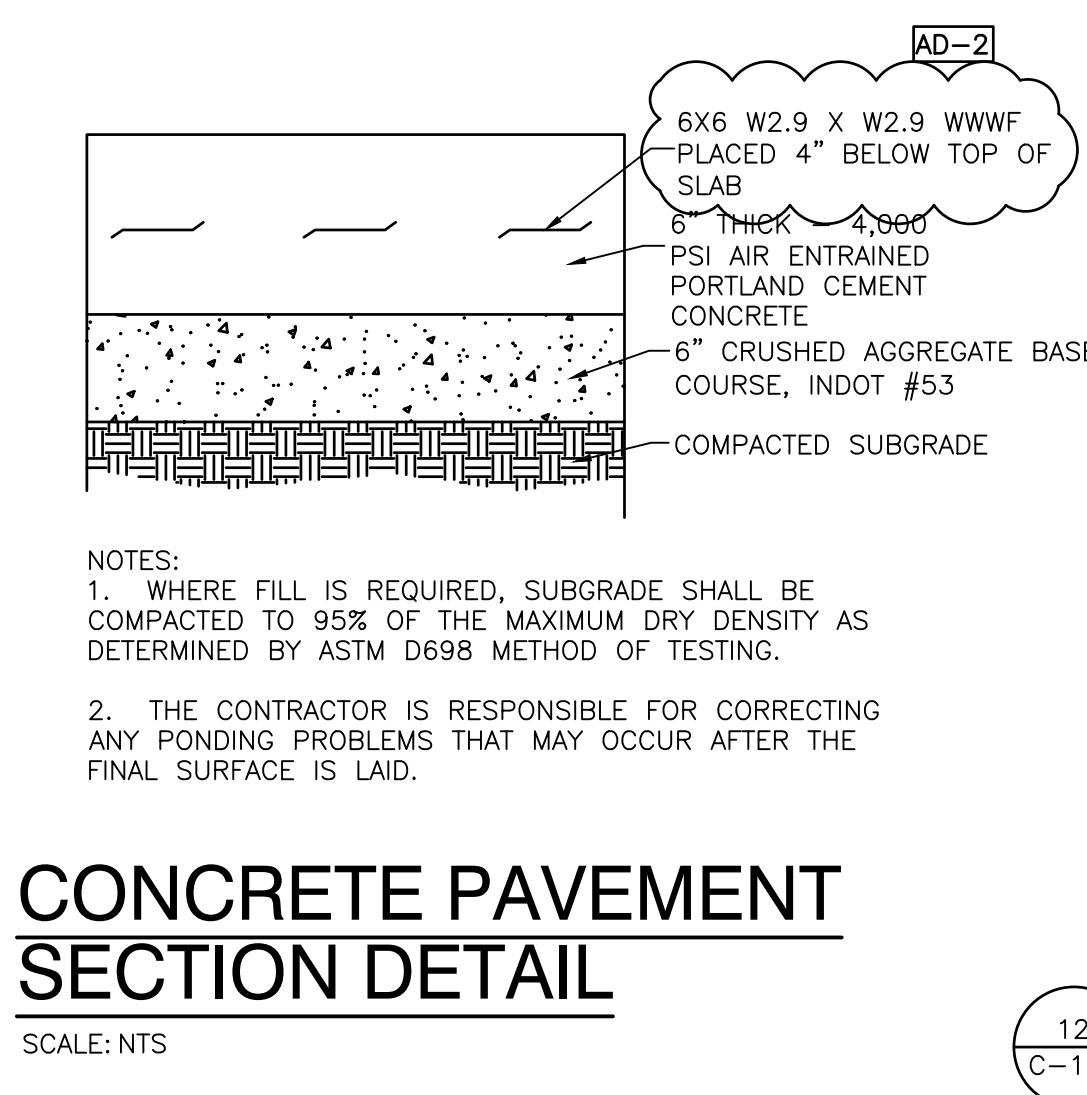
SILT FENCE DETAIL
SCALE: NTS



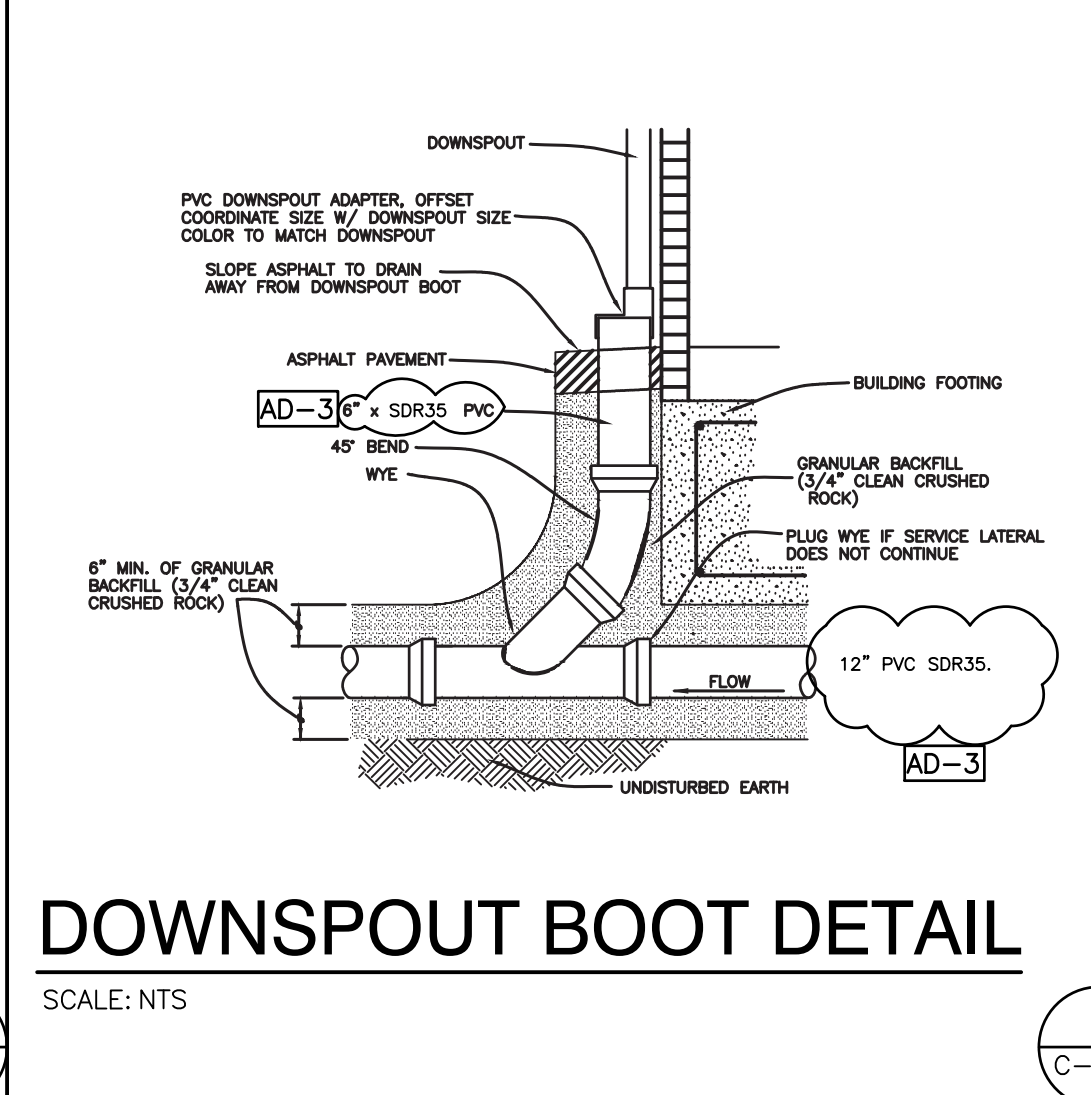
PIPE BOLLARD
SCALE: 3/4" = 1'-0"



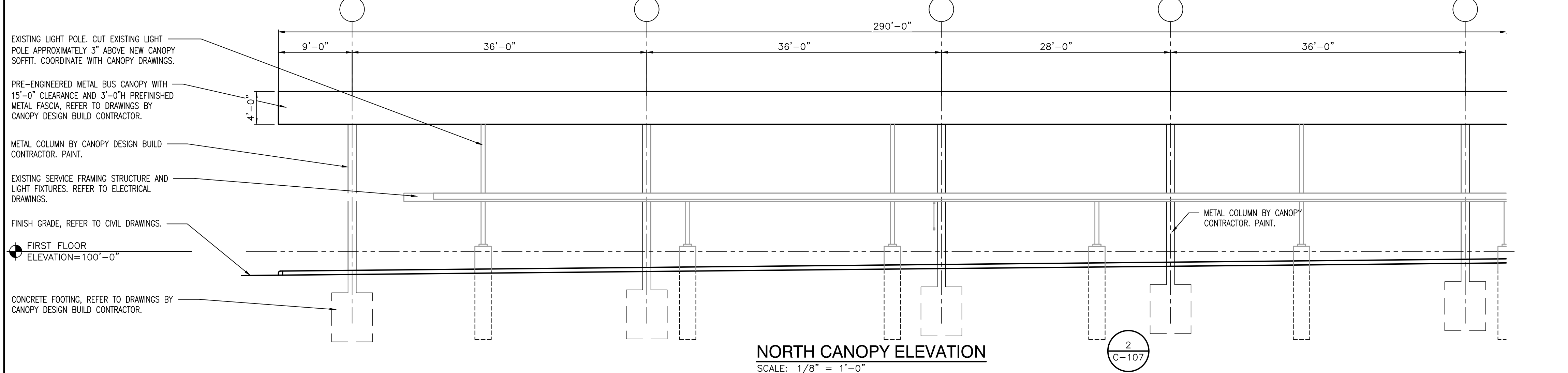
NEW CANOPY ELEVATION
SCALE: 1/8" = 1'-0"



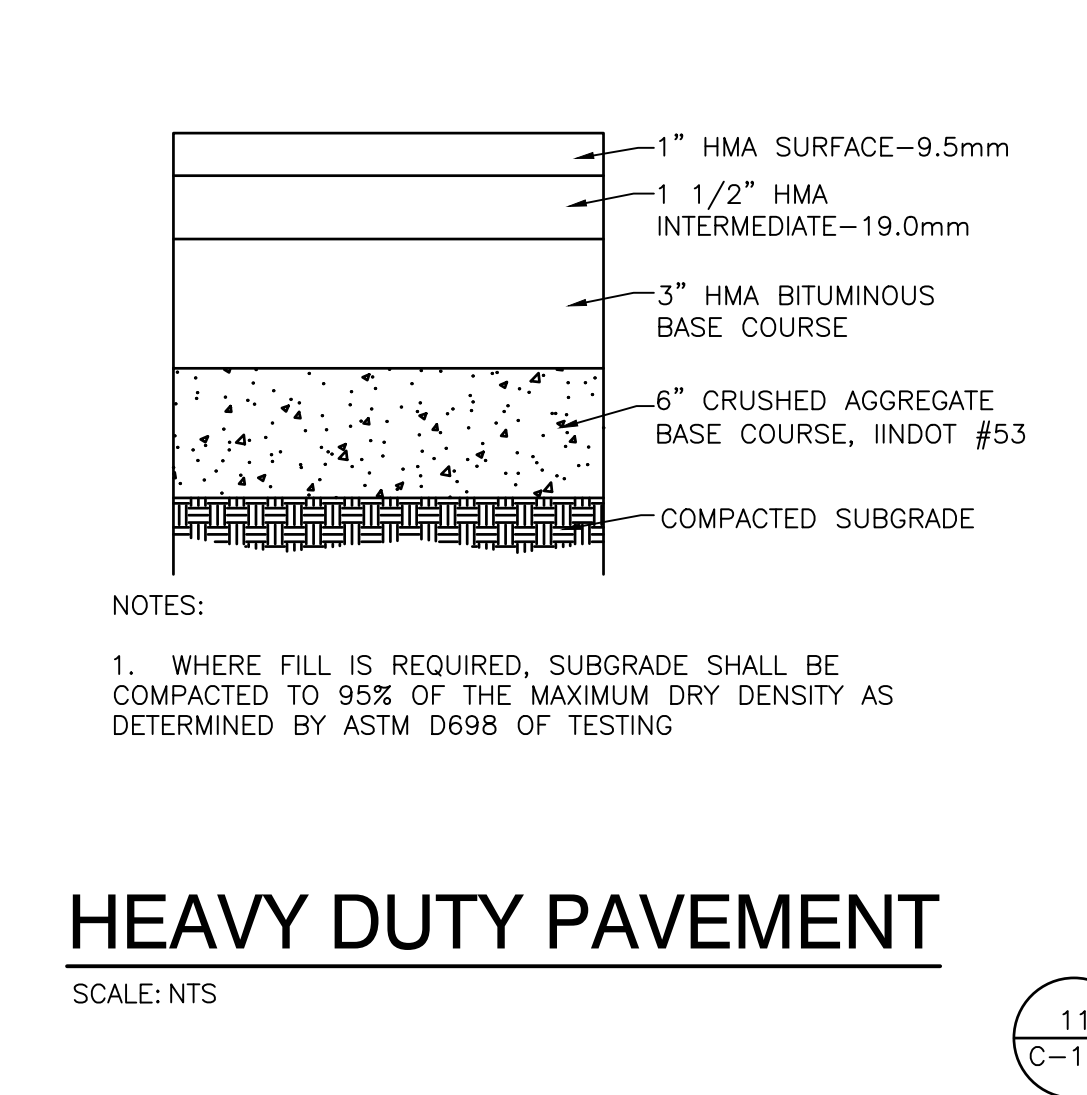
CONCRETE PAVEMENT SECTION DETAIL
SCALE: NTS



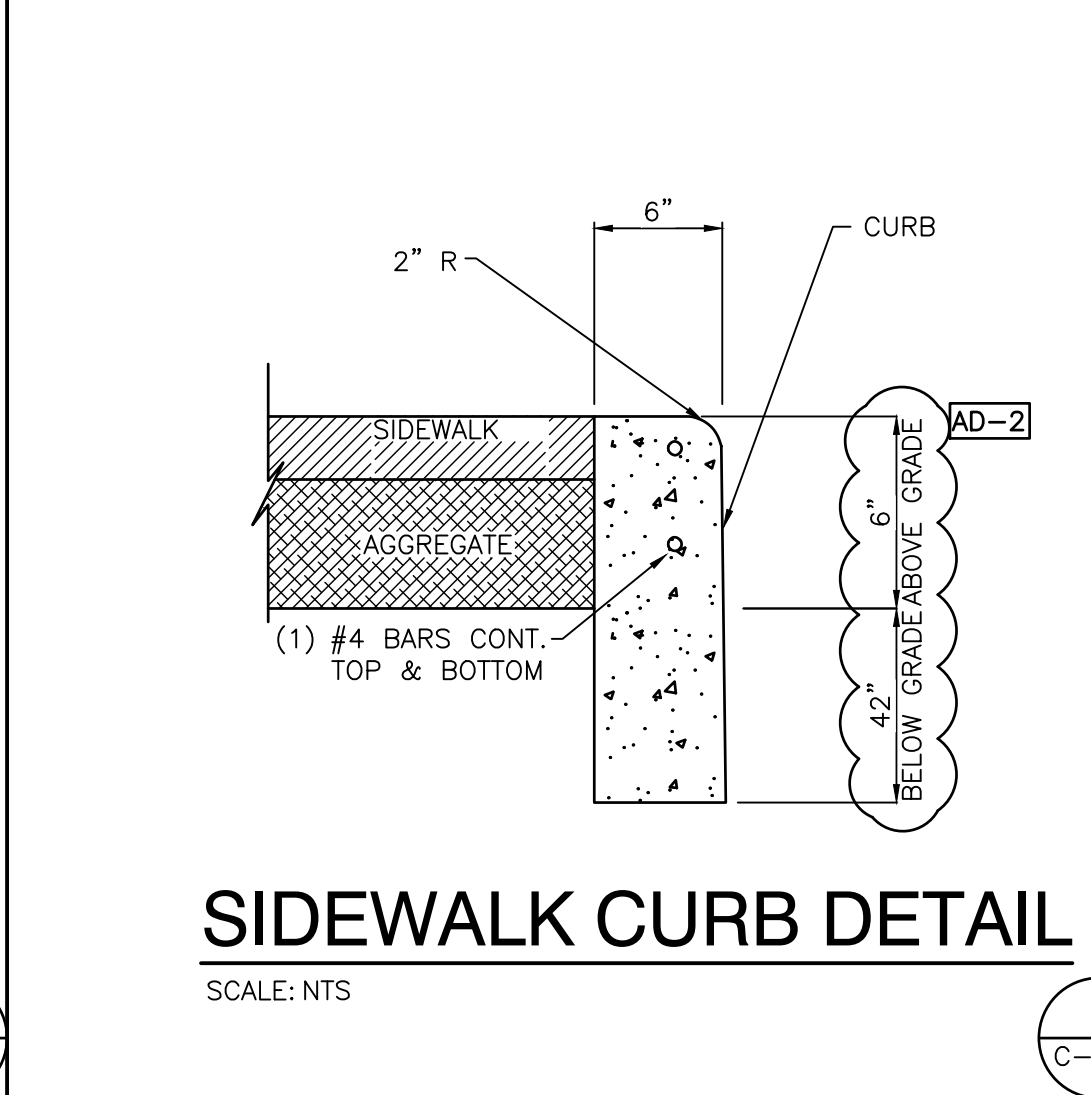
DOWNSPOUT BOOT DETAIL
SCALE: NTS



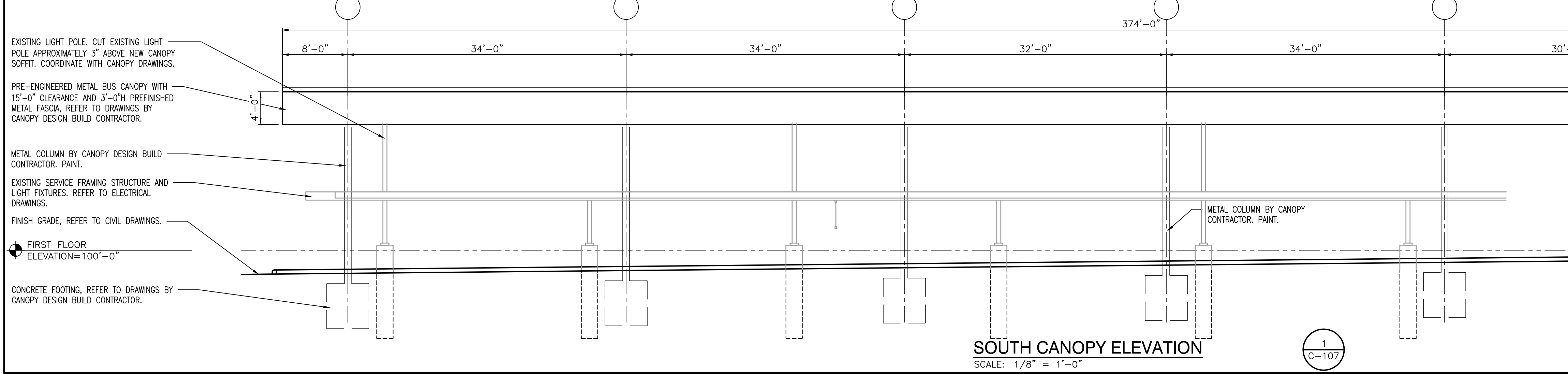
NORTH CANOPY ELEVATION
SCALE: 1/8" = 1'-0"



HEAVY DUTY PAVEMENT
SCALE: NTS



SIDEWALK CURB DETAIL
SCALE: NTS



SOUTH CANOPY ELEVATION
SCALE: 1/8" = 1'-0"

Monday, 3/10/2025 - 5:29 PM - LAST SAVED BY: CALANIS V. Y. 24-110 CROWN POINT CSC - TRANSPORTATION CENTER AUTOCAD: VARGAS-C-107.DWG