

**ADDENDUM
NO. 1**

April 6, 2026

**TRI-TOWNSHIP WANATAH SCHOOL
RENOVATION AND RELATED WORK
Wanatah, IN 46390**

TO: ALL BIDDERS OF RECORD

This Addendum forms a part of and modifies the Bidding Requirements, Contract Forms, Contract Conditions, the Specifications and the Drawings dated March 20, 2026 by Gibraltar Design, Inc. Acknowledge receipt of the Addendum in the space provided on the Bid Form. Failure to do so may subject the Bidder to disqualification.

This Addendum consists of Pages ADD 1-1 through ADD 1-3, 6 replacement drawings, and attached Addendum No. 1 from Gibraltar Design dated April 2, 2026 and consisting of 1 page, new Specification Section 06 61 16 - Solid Surfacing Fabrications, revised Specification Section 08 71 00 - Door Hardware and 4 drawings.

A. SPECIFICATION SECTION 00 00 20 - TABLE OF CONTENTS

1. ADD:

Specification Section 06 61 16 - Solid Surfacing Fabrications

B. SPECIFICATION SECTION 01 12 00 - MULTIPLE CONTRACT SUMMARY

Under 3.03 Bid Categories

A. BID CATEGORY NO. 1 - GENERAL TRADES

1. ADD:

Specification Section 06 61 16 - Solid Surfacing Fabrications

2. **ADD:**

Clarification No. 18:

The **Bid Category No. 1 Contractor** is responsible to remove the existing vertical control joints and expansion joints in existing exterior brick walls and provide new sealant and backer rod. The **Bid Category No. 1 Contractor** is responsible to remove existing and provide new sealant and backer rod of all existing louvers. The **Bid Category No. 1 Contractor** is responsible to remove existing and provide new sealant and backer rod around the perimeter of metal door frames on the exterior of the school.

Clarification No. 19:

Regarding specification 07 27 31 Sheet Air and Water Resistive Barrier, the **Bid Category No. 2 Contractor** is to provide all sheet air and water resistive barrier attached to or within the roofing system (including metal panels, fascia, and coping). The **Bid Category No. 1 Contractor** shall provide all other sheet air and water resistive barrier included in this section.

B. BID CATEGORY NO. 2 - ROOFING METAL COMPOSITES

1. **ADD:**

Specification Section 07 27 31 - Sheet Air and Water Resistive Barrier (As Applicable)

2. **ADD:**

Clarification No. 7:

Regarding specification 07 27 31 - Sheet Air and Water Resistive Barrier, the **Bid Category No. 2 Contractor** is to provide all sheet air and water resistive barrier attached to or within the roofing system (including metal panels, fascia, and coping). The **Bid Category No. 1 Contractor** shall provide all other sheet air and water resistive barrier included in this section.

Clarification No. 8:

Regarding notes E18 and E19 on the exterior elevation drawings, the **Bid Category No. 4 Contractor** is to remove existing sealants in joints of metal panels, clean thoroughly, prepare for paint, paint the metal panels, and install new backer rod and sealant to match new paint color.

C. BID CATEGORY NO. 3 - ALUMINUM WINDOWS/GLAZING

1. **ADD:**

Clarification No. 6:

The **Bid Category No. 3 Contractor** is to remove existing sealant and provide new sealant and backer rod around perimeter of existing aluminum storefronts and aluminum windows.

Clarification No. 7:

Regarding note E12 on the exterior elevations, the **Bid Category No. 3 Contractor** is to provide the aluminum metal panel infill in the window units.

D. BID CATEGORY NO. 4 - PAINTING

1. **ADD:**

Clarification No. 3:

Regarding note E11 on the exterior elevation drawings, the **Bid Category No. 4 Contractor** is to remove existing paint and re-paint the aluminum channel to match new fascia.

Clarification No. 4:

Regarding notes E18 and E19 on the exterior elevation drawings, the **Bid Category No. 4 Contractor** is to remove existing sealants in joints of metal panels, clean thoroughly, prepare for paint, and paint the metal panels and install new backer rod and sealant to match new paint color.

E. BID CATEGORY NO. 5 - HARD TILE

1. **ADD:**

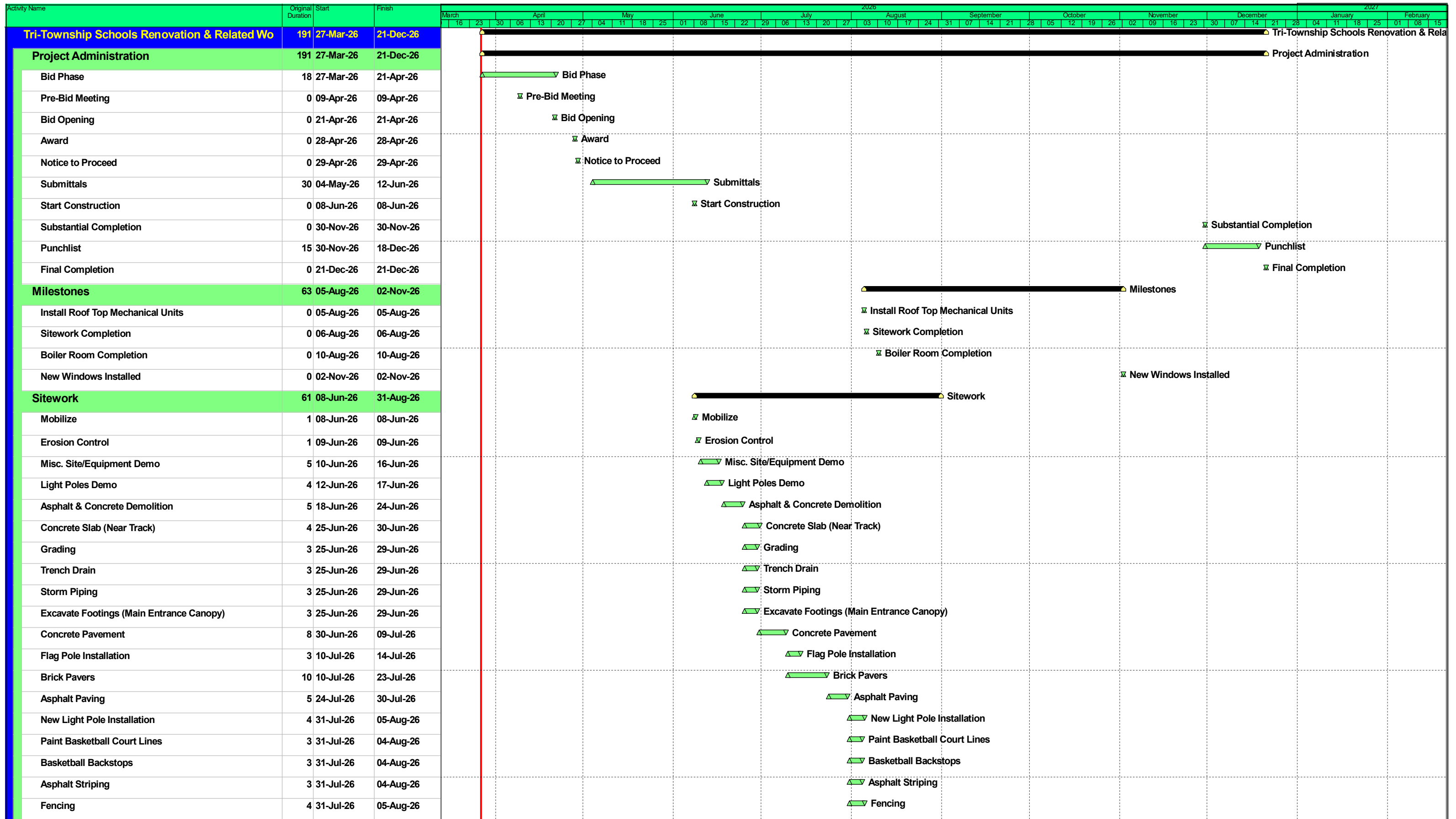
Clarification No. 3:






The **Bid Category 5 Contractor** shall provide the Vinyl Base called out on the finish plans and labeled on the Finish Legend as B1.

C. **SPECIFICATION SECTION 01 32 00 – SCHEDULES AND REPORTS**

1. **ADD:**

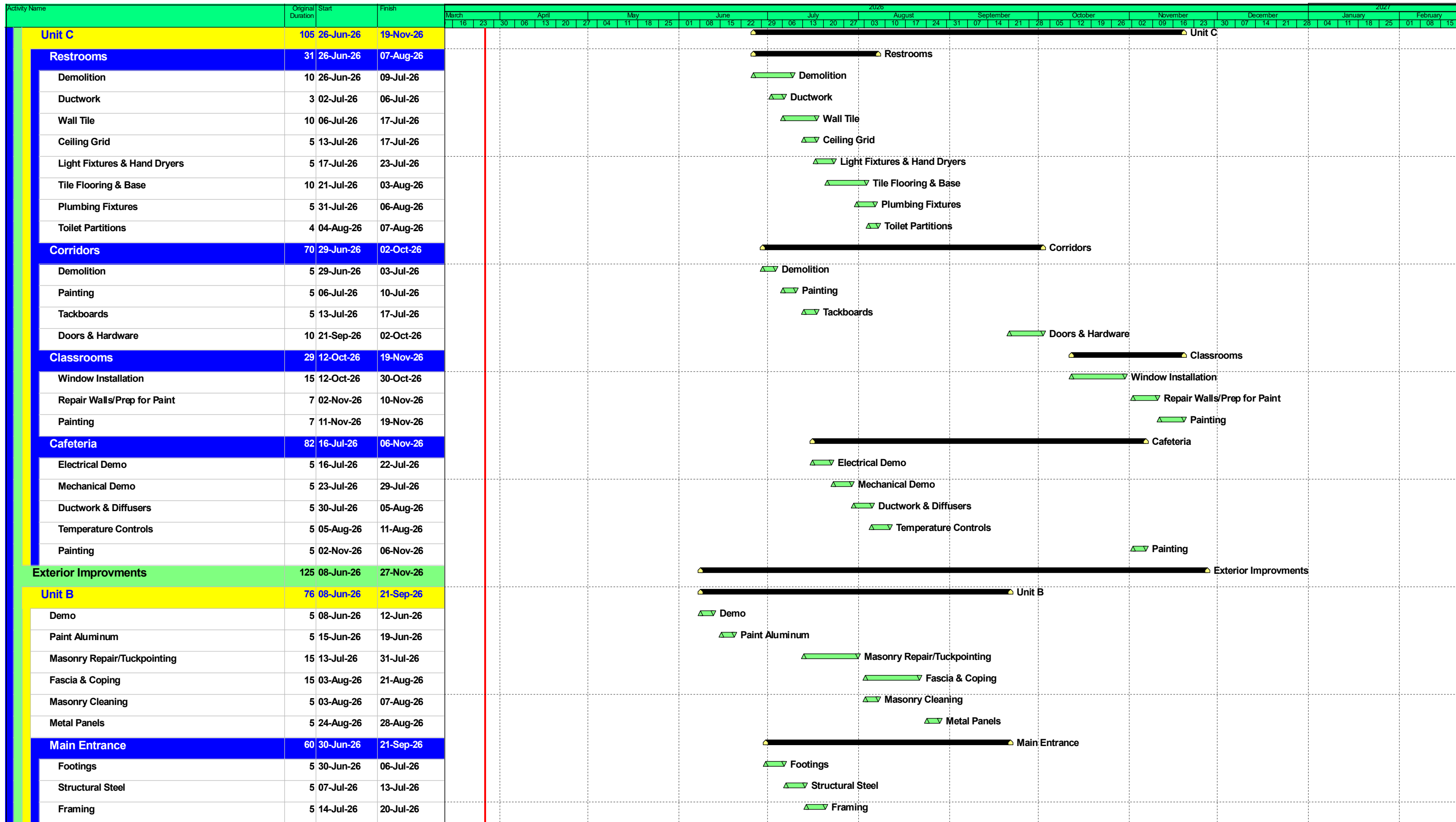
Attached Guideline Schedule



-  Actual Work
-  Remaining Work
-  Critical Remaining Work
-  Milestone
-  Summary

225090 Tri-Township Schools Renovation & Related Work
Guideline Schedule
 1 of 4





-  Actual Work
-  Remaining Work
-  Critical Remaining Work
-  Milestone
-  Summary

225090 Tri-Township Schools Renovation & Related Work
Guideline Schedule
 3 of 4



ADDENDUM ONE

Addendum One (AD.01) to the drawings and specifications prepared by Gibraltar Design for **Tri-Township Wanatah School Renovation and Related Work** for Tri-Township Consolidated School Corporation, Wanatah, Indiana.

All Contractors bidding on this project shall read all of the items covered below and shall comply with all of the requirements as set forth, including any necessary refinements or additions generated by this Addendum and required by the intent of the original contract documents. All Contractors shall acknowledge on their bid form that they have received this Addendum and include the appropriate content of same within their bid proposal.

SPECIFICATIONS

- 1. Specification Section 00 01 10 Table of Contents**
 - A. Add to Division 06, new Specification Section 06 61 16, Solid Surfacing Fabrications.
- 2. Specification Section 06 61 16 Solid Surfacing Fabrications**
 - A. Add new Specification Section 06 61 16, Solid Surfacing Fabrications included in this Addendum.
- 3. Specification Section 08 71 00 Door Hardware**
 - A. Replace Specification Section 08 71 00, Door Hardware with new Specification Section included in this Addendum.

DRAWINGS

- 4. Sheet C-101**
 - A. Refer to revised, full-size drawing, included in this Addendum, for clarifications to asphalt basketball court layout dimensions.
- 5. Sheet A-140**
 - A. Refer to revised, full-size drawing, included in this Addendum, for clarifications to a couple of Plan Notes.
- 6. Sheet A-201**
 - A. Refer to revised, full-size drawing, included in this Addendum, for updated detail symbols on Roof Edge Details.
- 7. Sheet A-901**
 - A. Refer to revised, full-size drawing, included in this Addendum, for corrected Drawing Title.

Page 1 inclusive, Specification Sections 06 61 16 and 08 71 00, and Four (4) Full-Size Drawings, constitute the total makeup of **Addendum One**.

SECTION 06 61 16

SOLID SURFACING FABRICATIONS

1 General

1.1 Summary

- A. Section includes solid-surfacing material countertops.
- B. Related Sections include the following:
 - 1. Division 7 Section "Joint Sealants" for sealing joints between solid-surfacing fabrications and adjacent materials.

1.2 Submittals

- A. Submit shop drawings and product data under provisions of Division 1.
- B. Product Data: For solid-surfacing products indicated, including mounting hardware, accessories, and finishing processes.
- C. Shop Drawings: Show location of each item, including dimensioned plans and elevations, fabrication and installation details, and attachment devices.
 - 1. Show locations and sizes of blocking and hanging strips, including concealed blocking and reinforcement specified in other Sections.
 - 2. Show locations and sizes of cutouts and holes for plumbing fixtures, faucets, and other items installed in solid-surfacing fabrications. Provide rough-in information required by plumbing trades for coordination of their work.

1.3 Quality Assurance

- A. Installer Qualifications: An experienced installer who is certified and approved by manufacturer, has minimum five years experience installing solid-surfacing fabrications similar in design and extent to that indicated for this Project, and whose work has resulted in construction with a record of successful in-service performance.
- B. Fabricator Qualifications: A firm who is certified by manufacturer to fabricate solid-surfacing products similar to that indicated for this Project and with a record of successful in-service performance, as well as sufficient production capacity to produce required units.
- C. Source Limitations: Engage a qualified firm to assume undivided responsibility for fabrication and installation of solid-surfacing fabrications.

2 Products

2.1 Acceptable Manufacturers

- A. Corian as manufactured by E.I. DuPont de Nemours & Company, Inc., Corian Building Products, Wilmington, Delaware.
- B. Gibraltar as manufactured by Wilsonart International, Temple, Texas.
- C. Avonite as manufactured by Aristech Acrylics, LLC, Belen, New Mexico.
- D. Formica Solid Surfacing as manufactured by Formica Corporation, Cincinnati, Ohio.
- E. Centura as manufactured by Centura Solid Surfacing, Inc., Westfield, Indiana.

2.2 Materials

- A. Solid-Surfacing Material: Homogeneous solid sheets of filled plastic resin containing methyl methacrylate complying with material and performance requirements in ANSI Z124.3, for Type 6, without a precoated finish. Appearance to be solid without veining.
- B. Accessories: Materials and devices required for complete installation.
 - 1. Sealant: Silicone rubber for sealing joints in solid surfacing products.
 - 2. Joint Adhesive: Manufacturer's two-component adhesive to create inconspicuous, non-porous joints with chemical bonding capabilities.

2.3 Solid-Surfacing Material Tops and Panels

- A. Tops: Fabricate in one piece with shop-applied backsplashes and edges, unless otherwise indicated. Comply with solid-surfacing-material manufacturer's written recommendations for adhesives, sealers, fabrication, and finishing.
 - 1. Thickness and Counter Design: As indicated on Drawings.
 - 2. Supports: As required.

2.4 Fabrication

- A. Quality Standard: Comply with AWI Section 400 requirements for tops.
- B. Grade: Custom.
- C. Solid-Surfacing-Material Thickness: As indicated on Drawings.
- D. Fabricate tops in one piece with shop-applied backsplashes and edges, unless otherwise indicated. Comply with solid-surfacing-material manufacturer's written recommendations for adhesives, sealers, fabrication, and finishing.

- E. Align adjacent solid-surfacing-material countertops and form seams to comply with manufacturer's written recommendations using adhesive in color to match countertop. Carefully dress joints smooth, remove surface scratches, and clean entire surface.
- F. Machine and ease all edges to a minimum of 1/8 inch radius, unless otherwise indicated. Provide machined fillet material to match solid surface in color and texture to create total fillet condition at all inside corners of countertops.

2.5 Finish

- A. Colors and Finishes: Refer to Finish Legend.

3 Execution

3.1 Examination and Preparation

- A. Examine substrates and conditions, with installer present, for compliance with requirements for installing solid surfacing fabrications.
- B. Proceed with installation only after unsatisfactory conditions have been corrected.
- C. Clean substrate of foreign materials that will adversely affect adhesion of solid surfacing fabrications.

3.2 Installation

- A. Install solid-surfacing fabrications in accordance with manufacturer's written installation instructions and approved shop drawings.
- B. Install solid-surfacing fabrications level, plumb, true, and straight. Shim as required with concealed shims. Install level and plumb to a tolerance of 1/8 inch in 96 inches.
- C. Secure solid-surfacing fabrications in place with construction adhesive as recommended by manufacturer.
- D. Tops: Install with approved adhesive and seal all joints and perimeters with approved sealant.

END OF SECTION

SECTION 08 71 00

DOOR HARDWARE

1 General

1.1 SUMMARY

A. Section includes:

1. Mechanical door hardware

B. Section excludes:

1. Windows
2. Cabinets (casework), including locks in cabinets
3. Signage
4. Toilet accessories
5. Overhead doors

C. Related Sections:

1. Division 01 "General Requirements" sections for Allowances, Alternates, Owner Furnished Contractor Installed, Project Management and Coordination.
2. Division 06 Section "Rough Carpentry"
3. Division 06 Section "Finish Carpentry"
4. Division 07 Section "Joint Sealants" for sealant requirements applicable to threshold installation specified in this section.
5. Division 08 Sections:
 - a. "Metal Doors and Frames"
 - b. "Flush Wood Doors"
6. Division 26 "Electrical" sections for connections to electrical power system and for low-voltage wiring.
7. Division 28 "Electronic Safety and Security" sections for coordination with other components of electronic access control system and fire alarm system.

1.2 REFERENCES

A. UL LLC

1. UL 10B - Fire Test of Door Assemblies
2. UL 10C - Positive Pressure Test of Fire Door Assemblies
3. UL 1784 - Air Leakage Tests of Door Assemblies
4. UL 305 - Panic Hardware

B. DHI - Door and Hardware Institute

1. Sequence and Format for the Hardware Schedule
2. Recommended Locations for Builders Hardware
3. Keying Systems and Nomenclature
4. Installation Guide for Doors and Hardware

- C. NFPA – National Fire Protection Association
 - 1. NFPA 70 – National Electric Code
 - 2. NFPA 80 – 2016 Edition – Standard for Fire Doors and Other Opening Protectives
 - 3. NFPA 101 – Life Safety Code
 - 4. NFPA 105 – Smoke and Draft Control Door Assemblies
 - 5. NFPA 252 – Fire Tests of Door Assemblies

- D. ANSI - American National Standards Institute
 - 1. ANSI A117.1 – 2017 Edition – Accessible and Usable Buildings and Facilities
 - 2. ANSI/BHMA A156.1 - A156.29, and ANSI/BHMA A156.31 - Standards for Hardware and Specialties
 - 3. ANSI/BHMA A156.28 - Recommended Practices for Keying Systems
 - 4. ANSI/WDMA I.S. 1A - Interior Architectural Wood Flush Doors
 - 5. ANSI/SDI A250.8 - Standard Steel Doors and Frames

1.3 SUBMITTALS

- A. General:
 - 1. Submit in accordance with Conditions of Contract and Division 01 Submittal Procedures.
 - 2. Prior to forwarding submittal:
 - a. Review drawings and Sections from related trades to verify compatibility with specified hardware.
 - b. Highlight, encircle, or otherwise specifically identify on submittals: deviations from Contract Documents, issues of incompatibility or other issues which may detrimentally affect the Work.

- B. Action Submittals:
 - 1. Product Data: Submit technical product data for each item of door hardware, installation instructions, maintenance of operating parts and finish, and other information necessary to show compliance with requirements.
 - 2. Riser and Wiring Diagrams: After final approval of hardware schedule, submit details of electrified door hardware, indicating:
 - a. Wiring Diagrams: For power, signal, and control wiring and including:
 - 1) Details of interface of electrified door hardware and building safety and security systems.
 - 2) Schematic diagram of systems that interface with electrified door hardware.
 - 3) Point-to-point wiring.
 - 4) Risers.
 - 3. Samples for Verification: If requested by Architect, submit production sample of requested door hardware unit in finish indicated and tagged with full description for coordination with schedule.

- a. Samples will be returned to supplier. Units that are acceptable to Architect may, after final check of operations, be incorporated into Work, within limitations of key coordination requirements.
4. Door Hardware Schedule:
- a. Submit concurrent with submissions of Product Data, Samples, and Shop Drawings. Coordinate submission of door hardware schedule with scheduling requirements of other work to facilitate fabrication of other work critical in Project construction schedule.
 - b. Submit under direct supervision of a Door Hardware Institute (DHI) certified Architectural Hardware Consultant (AHC) or Door Hardware Consultant (DHC) with hardware sets in vertical format as illustrated by Sequence of Format for the Hardware Schedule published by DHI.
 - c. Indicate complete designations of each item required for each opening, include:
 - 1) Door Index: door number, heading number, and Architect's hardware set number.
 - 2) Quantity, type, style, function, size, and finish of each hardware item.
 - 3) Name and manufacturer of each item.
 - 4) Fastenings and other pertinent information.
 - 5) Location of each hardware set cross-referenced to indications on Drawings.
 - 6) Explanation of all abbreviations, symbols, and codes contained in schedule.
 - 7) Mounting locations for hardware.
 - 8) Door and frame sizes and materials.
 - 9) Degree of door swing and handing.
 - 10) Operational Description of openings with electrified hardware covering egress, ingress (access), and fire/smoke alarm connections.
5. Key Schedule:
- a. After Keying Conference, provide keying schedule that includes levels of keying, explanations of key system's function, key symbols used, and door numbers controlled.
 - b. Use ANSI/BHMA A156.28 "Recommended Practices for Keying Systems" as guideline for nomenclature, definitions, and approach for selecting optimal keying system.
 - c. Provide 3 copies of keying schedule for review prepared and detailed in accordance with referenced DHI publication. Include schematic keying diagram and index each key to unique door designations.
 - d. Index keying schedule by door number, keyset, hardware heading number, cross keying instructions, and special key stamping instructions.

- e. Provide one complete bitting list of key cuts and one key system schematic illustrating system usage and expansion. Forward bitting list, key cuts and key system schematic directly to Owner, by means as directed by Owner.
 - f. Prepare key schedule by or under supervision of supplier, detailing Owner's final keying instructions for locks.
- C. Informational Submittals:
- 1. Provide Qualification Data for Supplier, Installer and Architectural Hardware Consultant.
 - 2. Provide Product Data:
 - a. Certify that door hardware approved for use on types and sizes of labeled fire-rated doors complies with listed fire-rated door assemblies.
 - b. Include warranties for specified door hardware.
- D. Closeout Submittals:
- 1. Operations and Maintenance Data: Provide in accordance with Division 01 and include:
 - a. Complete information on care, maintenance, and adjustment; data on repair and replacement parts, and information on preservation of finishes.
 - b. Catalog pages for each product.
 - c. Final approved hardware schedule edited to reflect conditions as installed.
 - d. Final keying schedule
 - e. Copy of warranties including appropriate reference numbers for manufacturers to identify project.
 - f. As-installed wiring diagrams for each opening connected to power, both low voltage and 110 volts.
- E. Inspection and Testing:
- 1. Submit written reports to the Owner and Authority Having Jurisdiction (AHJ) of the results of functional testing and inspection for:
 - a. Fire door assemblies, in compliance with NFPA 80.
 - b. Required egress door assemblies, in compliance with NFPA 101.

1.4 QUALITY ASSURANCE

- A. Qualifications and Responsibilities:
- 1. Supplier: Recognized architectural hardware supplier with a minimum of 5 years documented experience supplying both mechanical and electromechanical door hardware similar in quantity, type, and quality to that indicated for this Project. Supplier to be recognized as a factory direct distributor by the manufacturer of the primary materials with a warehousing facility in the Project's vicinity. Supplier to have on staff, a certified Architectural Hardware Consultant (AHC) or Door Hardware Consultant (DHC) available to Owner, Architect, and Contractor, at reasonable times during the Work for consultation.

2. Installer: Qualified tradesperson skilled in the application of commercial grade hardware with experience installing door hardware similar in quantity, type, and quality as indicated for this Project.
 3. Architectural Hardware Consultant: Person who is experienced in providing consulting services for door hardware installations that are comparable in material, design, and extent to that indicated for this Project and meets these requirements:
 - a. For door hardware: DHI certified AHC or DHC.
 - b. Can provide installation and technical data to Architect and other related subcontractors.
 - c. Can inspect and verify components are in working order upon completion of installation.
 - d. Capable of producing wiring diagram and coordinating installation of electrified hardware with Architect and electrical engineers.
 4. Single Source Responsibility: Obtain each type of door hardware from single manufacturer.
- B. Certifications:
1. Fire-Rated Door Openings:
 - a. Provide door hardware for fire-rated openings that complies with NFPA 80 and requirements of authorities having jurisdiction.
 - b. Provide only items of door hardware that are listed products tested by UL LLC, Intertek Testing Services, or other testing and inspecting organizations acceptable to authorities having jurisdiction for use on types and sizes of doors indicated, based on testing at positive pressure and according to NFPA 252 or UL 10C and in compliance with requirements of fire-rated door and door frame labels.
 2. Smoke and Draft Control Door Assemblies:
 - a. Provide door hardware that meets requirements of assemblies tested according to UL 1784 and installed in compliance with NFPA 105
 - b. Comply with the maximum air leakage of 0.3 cfm/sq. ft. (3 cu. m per minute/sq. m) at tested pressure differential of 0.3-inch wg (75 Pa) of water.
 3. Electrified Door Hardware
 - a. Listed and labeled as defined in NFPA 70, Article 100, by testing agency acceptable to authorities having jurisdiction.
 4. Accessibility Requirements:
 - a. Comply with governing accessibility regulations cited in "REFERENCES" article 087100, 1.02.D3 herein for door hardware on doors in an accessible route. This project must comply with all Federal Americans with Disability Act regulations and all Local Accessibility Regulations.
- C. Pre-Installation Meetings
1. Keying Conference

- a. Incorporate keying conference decisions into final keying schedule after reviewing door hardware keying system including:
 - 1) Function of building, flow of traffic, purpose of each area, degree of security required, and plans for future expansion.
 - 2) Preliminary key system schematic diagram.
 - 3) Requirements for key control system.
 - 4) Requirements for access control.
 - 5) Address for delivery of keys.
2. Pre-installation Conference
 - a. Review and finalize construction schedule and verify availability of materials, Installer's personnel, equipment, and facilities needed to make progress and avoid delays.
 - b. Inspect and discuss preparatory work performed by other trades.
 - c. Inspect and discuss electrical roughing-in for electrified door hardware.
 - d. Review sequence of operation for each type of electrified door hardware.
 - e. Review required testing, inspecting, and certifying procedures.
 - f. Review questions or concerns related to proper installation and adjustment of door hardware.
3. Electrified Hardware Coordination Conference:
 - a. Prior to ordering electrified hardware, schedule and hold meeting to coordinate door hardware with security, electrical, doors and frames, and other related suppliers.

1.5 DELIVERY, STORAGE, AND HANDLING

- A. Inventory door hardware on receipt and provide secure lock-up for hardware delivered to Project site. Promptly replace products damaged during shipping.
- B. Tag each item or package separately with identification coordinated with final door hardware schedule, and include installation instructions, templates, and necessary fasteners with each item or package. Deliver each article of hardware in manufacturer's original packaging.
- C. Maintain manufacturer-recommended environmental conditions throughout storage and installation periods.
- D. Provide secure lock-up for door hardware delivered to Project. Control handling and installation of hardware items so that completion of Work will not be delayed by hardware losses both before and after installation.
- E. Handle hardware in manner to avoid damage, marring, or scratching. Correct, replace or repair products damaged during Work. Protect products against malfunction due to paint, solvent, cleanser, or any chemical agent.
- F. Deliver keys to manufacturer of key control system for subsequent delivery to Owner.

1.6 COORDINATION

- A. Coordinate layout and installation of floor-recessed door hardware with floor construction. Cast anchoring inserts into concrete.
- B. Installation Templates: Distribute for doors, frames, and other work specified to be factory or shop prepared. Check Shop Drawings of other work to confirm that adequate provisions are made for locating and installing door hardware to comply with indicated requirements.
- C. Security: Coordinate installation of door hardware, keying, and access control with Owner's security consultant.
- D. Electrical System Roughing-In: Coordinate layout and installation of electrified door hardware with connections to power supplies and building safety and security systems.

1.7 WARRANTY

- A. Manufacturer's standard form in which manufacturer agrees to repair or replace components of door hardware that fail in materials or workmanship within published warranty period.
 - 1. Warranty does not cover damage or faulty operation due to improper installation, improper use or abuse.
 - 2. Warranty Period: Beginning from date of Substantial Completion, for durations indicated in manufacturer's published listings.
 - a. Mechanical Warranty
 - 1) Locks
 - a) Schlage ND Series: 10 years
 - 2) Exit Devices
 - a) Von Duprin: 10 years
 - 3) Closers
 - a) LCN 4050 Series: 25 years

1.8 MAINTENANCE

- A. Furnish complete set of special tools required for maintenance and adjustment of hardware, including changing of cylinders.
- B. Turn over unused materials to Owner for maintenance purposes.

2 PRODUCTS

2.1 MANUFACTURERS

- A. The Owner requires use of certain products for their unique characteristics and project suitability to ensure continuity of existing and future performance and maintenance standards. After investigating available product offerings, the Awarding Authority has elected to prepare proprietary specifications. These products are specified with the notation: "No Substitute."

1. Where "No Substitute" is noted, submittals and substitution requests for other products will not be considered.
- B. Approval of alternate manufacturers and/or products other than those listed as "Scheduled Manufacturer" or "Acceptable Manufacturers" in the individual article for the product category are only to be considered by official substitution request in accordance with section 01 25 00.
- C. Approval of products from manufacturers indicated in "Acceptable Manufacturers" is contingent upon those products providing all functions and features and meeting all requirements of scheduled manufacturer's product.
- D. Where specified hardware is not adaptable to finished shape or size of members requiring hardware, furnish suitable types having same operation and quality as type specified, subject to Architect's approval.

2.2 MATERIALS

- A. Fabrication
 1. Provide door hardware manufactured to comply with published templates generally prepared for machine, wood, and sheet metal screws. provide screws according to manufacturer's recognized installation standards for application intended.
 2. Finish exposed screws to match hardware finish, or, if exposed in surfaces of other work, to match finish of this other work including prepared for paint surfaces to receive painted finish.
 3. Provide concealed fasteners wherever possible for hardware units exposed when door is closed. Coordinate with "Metal Doors and Frames", "Flush Wood Doors", "Stile and Rail Wood Doors" to ensure proper reinforcements. Advise the Architect where visible fasteners, such as thru bolts, are required.
- B. Provide screws, bolts, expansion shields, drop plates and other devices necessary for hardware installation.
 1. Where fasteners are exposed to view: Finish to match adjacent door hardware material.
- C. Cable and Connectors:
 1. Where scheduled in the hardware sets, provide each item of electrified hardware and wire harnesses with number and gage of wires enough to accommodate electric function of specified hardware.
 2. Provide Molex connectors that plug directly into connectors from harnesses, electric locking and power transfer devices.
 3. Provide through-door wire harness for each electrified locking device installed in a door and wire harness for each electrified hinge, electrified continuous hinge, electrified pivot, and electric power transfer for connection to power supplies.

2.3 HINGES

- A. Manufacturers and Products:
 1. Scheduled Manufacturer and Product:
 - a. Ives 5BB series

2. Acceptable Manufacturers and Products:
 - a. Hager BB1 191/1279 series
 - b. Best FBB series
- B. Requirements:
 1. Provide hinges conforming to ANSI/BHMA A156.1.
 2. Provide five knuckle, ball bearing hinges.
 3. 1-3/4 inch (44 mm) thick doors, up to and including 36 inches (914 mm) wide:
 - a. Exterior: Standard weight, bronze or stainless steel, 4-1/2 inches (114 mm) high
 - b. Interior: Standard weight, steel, 4-1/2 inches (114 mm) high
 4. 1-3/4 inch (44 mm) thick doors over 36 inches (914 mm) wide:
 - a. Exterior: Heavy weight, bronze/stainless steel, 5 inches (127 mm) high
 - b. Interior: Heavy weight, steel, 5 inches (127 mm) high
 5. 2 inches or thicker doors:
 - a. Exterior: Heavy weight, bronze or stainless steel, 5 inches (127 mm) high
 - b. Interior: Heavy weight, steel, 5 inches (127 mm) high
 6. Adjust hinge width for door, frame, and wall conditions to allow proper degree of opening.
 7. Provide three hinges per door leaf for doors 90 inches (2286 mm) or less in height, and one additional hinge for each 30 inches (762 mm) of additional door height.
 8. Hinge Pins: Except as otherwise indicated, provide hinge pins as follows:
 - a. Steel Hinges: Steel pins
 - b. Non-Ferrous Hinges: Stainless steel pins
 - c. Out-Swinging Exterior Doors: Non-removable pins
 - d. Out-Swinging Interior Lockable Doors: Non-removable pins
 - e. Interior Non-lockable Doors: Non-rising pins
 9. Provide hinges with electrified options as scheduled in the hardware sets. Provide with number and gage of wires enough to accommodate electric function of specified hardware. Locate electric hinge at second hinge from bottom or nearest to electrified locking component. Provide mortar guard for each electrified hinge specified.

2.4 CYLINDRICAL LOCKS – GRADE 1

- A. Manufacturers and Products:
 1. Scheduled Manufacturer and Product:
 - a. Schlage ND series
 2. Acceptable Manufacturers and Products:
 - a. Sargent 11-Line

B. Requirements:

1. Provide cylindrical locks conforming to ANSI/BHMA A156.2 Series 4000, Grade 1, and UL Listed for 3-hour fire doors.
2. Indicators: Where specified, provide escutcheon with lock status indicator window on top of lockset rose:
 - a. Escutcheon height (including rose) 6.05 inches high by 3.68 inches wide.
 - b. Indicator window measuring a minimum 3.52-inch by .60 inch with 1.92 square-inches of front facing viewing area and 180-degree visibility with a total of .236 square-inches of total viewable area.
 - c. Provide snap-in serviceable window to prevent tampering. Lock must function if indicator is compromised.
 - d. Provide messages color-coded with full text and symbol, as scheduled, for easy visibility.
 - e. Unlocked and Unoccupied message will display on white background, and Locked and Occupied message will display on red background.
3. Cylinders: Refer to "KEYING" article, herein.
4. Provide locks with standard 2-3/4 inches (70 mm) backset, unless noted otherwise, with 1/2-inch latch throw. Provide proper latch throw for UL listing at pairs.
5. Provide locksets with separate anti-rotation thru-bolts, and no exposed screws.
6. Provide independently operating levers with two external return spring cassettes mounted under roses to prevent lever sag.
7. Provide standard ASA strikes unless extended lip strikes are necessary to protect trim.
8. Provide electrified options as scheduled in the hardware sets.
9. Lever Trim: Solid cast levers without plastic inserts and wrought roses on both sides.
 - a. Lever Design: RHO

2.5 DEADBOLTS

A. Manufacturers and Products:

1. Scheduled Manufacturer and Product:
 - a. Schlage B600/B700/B800 Series
2. Acceptable Manufacturers and Products:
 - a. No Substitute
 - b. Sargent 480 Series

B. Requirements:

1. Provide grade 1 deadbolt series conforming to ANSI/BHMA A156.
2. Cylinders: Refer to "KEYING" article, herein.

3. Provide deadbolts with standard 2-3/4 inches (70 mm) backset. Provide 2-3/8 inches (60 mm) where noted or if door or frame detail requires. Provide deadbolt with full 1-inch (25 mm) throw, constructed of steel alloy.
4. Provide manufacturer's standard strike.
5. Lock Status Indicator Trim: Where specified, provide escutcheon with lock status indicator window.
 - a. Escutcheon height 4.125 inches, width 2.54 inches. Projection 1.32 inches on thumbturn side and 1.28 inches on cylinder side.
 - b. Unlocked and Unoccupied message will display on white background, and Locked and Occupied message will display on red background.
 - c. Provide snap-in serviceable window to prevent tampering. Lock must function if indicator is compromised.
 - d. Indicator window to provide 180-degree visibility.

2.6 EXIT DEVICES

- A. Manufacturers and Products:
 1. Scheduled Manufacturer and Product:
 - a. Von Duprin 99/33A series
 2. Acceptable Manufacturers and Products:
 - a. No Substitute
- B. Requirements:
 1. Provide exit devices tested to ANSI/BHMA A156.3 Grade 1 and UL listed for Panic Exit or Fire Exit Hardware.
 2. Cylinders: Refer to "KEYING" article, herein.
 3. Provide grooved touchpad type exit devices, fabricated of brass, bronze, stainless steel, or aluminum, plated to standard architectural finishes to match balance of door hardware.
 4. Touchpad must extend a minimum of one half of door width. No plastic inserts are allowed in touchpads.
 5. Provide exit devices with deadlatching feature for security and for future addition of alarm kits and/or other electrified requirements.
 6. Provide exit devices with weather resistant components that can withstand harsh conditions of various climates and corrosive cleaners used in outdoor pool environments.
 7. Provide flush end caps for exit devices.
 8. Provide exit devices with manufacturer's approved strikes.
 9. Provide exit devices cut to door width and height. Install exit devices at height recommended by exit device manufacturer, allowable by governing building codes, and approved by Architect.

10. Mount mechanism case flush on face of doors or provide spacers to fill gaps behind devices. Where glass trim or molding projects off face of door, provide glass bead kits.
11. Provide cylinder or hex-key dogging as specified at non fire-rated openings.
12. Removable Mullions: 2 inches (51 mm) x 3 inches (76 mm) steel tube. Where scheduled as keyed removable mullion, provide type that can be removed by use of a keyed cylinder, which is self-locking when re-installed.
13. Provide factory drilled weep holes for exit devices used in full exterior application, highly corrosive areas, and where noted in hardware sets.
14. Provide electrified options as scheduled.
15. Top latch mounting: double- or single-tab mount for steel doors, face mount for aluminum doors eliminating requirement of tabs, and double tab mount for wood doors.
16. Provide exit devices with optional trim designs to match other lever and pull designs used on the project.
 - a. Provide levers that return to within 1/2 inch (13 mm) of the door face.
17. Provide exit devices with PA filler.
18. Accessibility: Require not more than 5 lb. to retract the latchbolt, per CBC 2019 11B-404.2.7 and 11B-309.4.
 - a. Mechanical method: Von Duprin AX feature, where touchpad directly retracts the latchbolt with 5 lb. or less of force. Provide testing lab certification confirming that the mechanical device is independent third-party tested to meet this 5 lb. requirement.
 - b. Electrical method: Von Duprin's RX-QEL feature, where lightly pressing the touchpad with 5 lb. or less of force closes an electric switch, activating quiet electric latch retraction.
19. Special Options:
 - a. SI
 - 1) Provide dogging indicators for visible indication of dogging status.

2.7 CYLINDERS

- A. Manufacturers and Products:
 1. Scheduled Manufacturer and Product:
 - a. Schlage Everest 29 SL
 2. Acceptable Manufacturers and Products:
 - a. No Substitute
- B. Requirements:
 1. Provide cylinders/cores, compliant with ANSI/BHMA A156.5; latest revision; cylinder face finished to match lockset, manufacturer's series as indicated. Refer to "KEYING" article, herein.

2. Provide cylinders in the below-listed configuration(s), distributed throughout the Project as indicated.
 - a. High Security: dual-locking cylinder with permanent core requiring restricted, patented keyway. Dual-locking mechanism with interlocking finger pin(s) to check for patented features on keys.
3. Patent Protection: Cylinders/cores requiring use of restricted, patented keys, patent protected.
4. Nickel silver bottom pins.

2.8 KEYING

A. Scheduled System:

1. Existing factory registered system:
 - a. Provide cylinders/cores keyed into Owner's existing factory registered keying system. Comply with guidelines in ANSI/BHMA A156.28, incorporating decisions made at keying conference.

B. Requirements:

1. Construction Keying:
 - a. Replaceable Construction Cores.
 - 1) Provide temporary construction cores replaceable by permanent cores, furnished in accordance with the following requirements.
 - a) 3 construction control keys
 - b) 12 construction change (day) keys.
 - 2) Owner or Owner's Representative will replace temporary construction cores with permanent cores.
2. Permanent Keying:
 - a. Provide permanent cylinders/cores keyed by the manufacturer according to the following key system.
 - 1) Master Keying system as directed by the Owner.
 - b. Forward bitting list and keys separately from cylinders, by means as directed by Owner. Failure to comply with forwarding requirements will be cause for replacement of cylinders/cores involved at no additional cost to Owner.
 - c. Provide keys with the following features:
 - 1) Material: Nickel silver; minimum thickness of .107-inch (2.3mm)
 - 2) Patent Protection: Keys and blanks protected by one or more utility patent(s).
 - 3) Geographically Exclusive: Where High Security or Security cylinders/cores are indicated, provide nationwide, geographically exclusive key system complying with the following restrictions.
 - d. Identification:

- 1) Mark permanent cylinders/cores and keys with applicable blind code for identification. Do not provide blind code marks with actual key cuts.
 - 2) Identification stamping provisions must be approved by the Architect and Owner.
 - 3) Stamp cylinders/cores and keys with Owner's unique key system facility code as established by the manufacturer; key symbol and embossed or stamped with "DO NOT DUPLICATE" along with the "PATENTED" or patent number to enforce the patent protection.
 - 4) Failure to comply with stamping requirements will be cause for replacement of keys involved at no additional cost to Owner.
 - 5) Forward permanent cylinders/cores to Owner, separately from keys, by means as directed by Owner.
- e. Quantity: Furnish in the following quantities.
- 1) Permanent Control Keys: 3.
 - 2) Master Keys: 6.
 - 3) Change (Day) Keys: 3 per cylinder/core that is keyed differently
 - 4) Key Blanks: Quantity as determined in the keying meeting.

2.9 DOOR CLOSERS

A. Manufacturers and Products:

1. Scheduled Manufacturer and Product:
 - a. LCN 4050A series
2. Acceptable Manufacturers and Products:
 - a. Sargent 351 Series

B. Requirements:

1. Provide door closers conforming to ANSI/BHMA A156.4 Grade 1 requirements by BHMA certified independent testing laboratory. ISO 9000 certify closers. Stamp units with date of manufacture code.
2. Provide door closers with fully hydraulic, full rack and pinion action with high strength cast iron cylinder, and full complement bearings at shaft.
3. Cylinder Body: 1-1/2-inch (38 mm) diameter piston with 5/8-inch (16 mm) diameter double heat-treated pinion journal. QR code with a direct link to maintenance instructions.
4. Hydraulic Fluid: Fireproof, passing requirements of UL10C, and requiring no seasonal closer adjustment for temperatures ranging from 120 degrees F to -30 degrees F.
5. Spring Power: Continuously adjustable over full range of closer sizes, and providing reduced opening force as required by accessibility codes and standards. Provide snap-on cover clip, with plastic covers, that secures cover to spring tube.

6. Hydraulic Regulation: By tamper-proof, non-critical valves, with separate adjustment for latch speed, general speed, and backcheck. Provide graphically labelled instructions on the closer body adjacent to each adjustment valve. Provide positive stop on reg valve that prevents reg screw from being backed out.
7. Pressure Relief Valve (PRV) Technology: Not permitted.
8. Provide stick on templates, drop plates, mounting brackets, or adapters for arms as required for details, overhead stops, and other door hardware items interfering with closer mounting.

2.10 DOOR TRIM

- A. Manufacturers:
 1. Scheduled Manufacturer:
 - a. Trimco
 2. Acceptable Manufacturers:
 - a. Ives
 - b. Burns
 - c. Rockwood
- B. Requirements:
 1. Provide push plates, push bars, pull plates, pulls, and hands-free reversible door pulls with diameter and length as scheduled.

2.11 PROTECTION PLATES

- A. Manufacturers:
 1. Scheduled Manufacturer:
 - a. Trimco
 2. Acceptable Manufacturers:
 - a. Ives
 - b. Burns
 - c. Rockwood
- B. Requirements:
 1. Provide protection plates with a minimum of 0.050 inch (1 mm) thick, beveled four edges as scheduled. Furnish with sheet metal or wood screws, finished to match plates.
 2. Size plates 2 inches (51 mm) less width of door on single doors, pairs of doors with a mullion, and doors with edge guards. Size plates 1 inch (25 mm) less width of door on pairs without a mullion or edge guards.
 3. At fire rated doors, provide protection plates over 16 inches high with UL label.
 4. At fire rated doors, provide protection plate with option for adhesive tape mounted protection plates over 16 inches high provide UL label stamp..

2.12 OVERHEAD STOPS AND OVERHEAD STOP/HOLDERS

- A. Manufacturers:
 - 1. Scheduled Manufacturers:
 - a. Glynn-Johnson
 - 2. Acceptable Manufacturers:
 - a. ABH
- B. Requirements:
 - 1. Provide overhead stop at any door where conditions do not allow for a wall stop or floor stop presents tripping hazard.

2.13 DOOR STOPS AND HOLDERS

- A. Manufacturers:
 - 1. Scheduled Manufacturer:
 - a. Trimco
 - 2. Acceptable Manufacturers:
 - a. Ives
 - b. Burns
 - c. Rockwood
- B. Provide door stops at each door leaf:
 - 1. Provide wall stops wherever possible. Provide concave type where lockset has a push button or thumbturn.
 - 2. Where a wall stop cannot be used, provide universal floor stops.
 - 3. Where wall or floor stop cannot be used, provide overhead stop.
 - 4. Provide roller bumper where doors open into each other and overhead stop cannot be used.

2.14 SILENCERS

- A. Manufacturers:
 - 1. Scheduled Manufacturer:
 - a. Trimco
 - 2. Acceptable Manufacturers:
 - a. Ives
 - b. Burns
 - c. Rockwood
- B. Requirements:
 - 1. Provide "push-in" type silencers for hollow metal or wood frames.

2. Provide one silencer per 30 inches (762 mm) of height on each single frame, and two for each pair frame.
3. Omit where gasketing is specified.

2.15 THRESHOLDS, SEALS, DOOR SWEEPS, AUTOMATIC DOOR BOTTOMS, AND GASKETING

- A. Manufacturers:
 1. Scheduled Manufacturer:
 - a. Zero International
 2. Acceptable Manufacturers:
 - a. National Guard
 - b. Reese
- B. Seals and Gasketing: Provide continuous gasketing on exterior openings, to the head and jambs, forming a continuous seal between the door and the frame. Provide smoke, light, or sound gasketing on interior doors where indicated.
 1. Provide self-tapping fasteners for aluminum extruded gasketing being applied to hollow metal frames.
 - a. Provide non-corrosive fasteners for all exterior applications.
 - b. Provide security fasteners where indicated.
 2. Provide neoprene, EPDM, silicone, or nylon brush inserts as specified in hardware sets. Provide non brush inserts of solid or sponge cell, as specified in hardware sets. Vinyl inserts are not allowed except where specified in hardware sets.
- C. Smoke Labeled Gasketing: At all smoke labeled openings, provide smoke listed perimeter gasketing assemblies complying with NFPA 105 listed and labeled by a testing and inspecting agency acceptable to authorities having jurisdiction for smoke control ratings indicated based on testing according to UL 1784.
- D. Fire Listed Gasketing: Assemblies complying with NFPA 80 that are listed by a testing and inspecting agency acceptable to authorities having jurisdiction for fire ratings indicated based on testing according to UL-10C.
 1. Where frame-applied intumescent seals are required by the manufacturer, provide gaskets that comply with UL10C Standard for Positive Pressure Fire Tests of Door Assemblies and UBC 7-2, Fire Tests of Door Assemblies.
- E. Sound-Rated Gasketing: Provide acoustic gasketing to meet Sound Transmission Class (STC) rating required.
- F. Meeting-Stile Gasketing: Provide meeting-stile gasketing that fastens to the meeting stiles forming a continuous seal when doors are closed.
- G. Door Sweeps or Shoes: Apply to the bottom of the door to close the gap between the door bottom and finished floor or saddle threshold.
 1. Provide solid neoprene, EPDM, silicone, or nylon brush type of seal as specified in hardware sets. Vinyl inserts are not allowed except where specified in hardware sets.

- H. Automatic Door Bottoms:
 - 1. Provide closed cell sponge, bulb neoprene. or EPDM type of seal as specified in hardware sets.
 - 2. Door bottom to be mortised, semi mortised, or surface mount as with a minimum thickness as specified in hardware sets.
- I. Rain Drips:
 - 1. Provide overhead rain drips for out-swinging hollow metal doors that are not covered against 45 degree blowing rain. Aluminum extrusion to be a minimum of .088 inches thick and extend 2.50 inches from the face of the frame, in anodized finish to match door.
 - 2. Door sweeps or shoes with integral rain drip must meet ADA requirements
- J. Thresholds: Provide threshold units not less than 4 inches wide, formed to accommodate change in floor elevation where indicated, and fabricated to accommodate door hardware and fit door frames.
- K. Threshold extrusion to be a minimum thickness as specified in hardware sets.

2.16 FINISHES

- A. FINISH: BHMA 626/652 (US26D); EXCEPT:
 - 1. Hinges at Exterior Doors: BHMA 630 (US32D)
 - 2. Aluminum Geared Continuous Hinges: BHMA 628 (US28)
 - 3. Push Plates, Pulls, and Push Bars: BHMA 630 (US32D)
 - 4. Protection Plates: BHMA 630 (US32D)
 - 5. Overhead Stops and Holders: BHMA 630 (US32D)
 - 6. Door Closers: Powder Coat to Match
 - 7. Wall Stops: BHMA 630 (US32D)
 - 8. Latch Protectors: BHMA 630 (US32D)
 - 9. Weatherstripping: Clear Anodized Aluminum
 - 10. Thresholds: Mill Finish Aluminum

3 EXECUTION

3.1 EXAMINATION

- A. Prior to installation of hardware, examine doors and frames, with Installer present, for compliance with requirements for installation tolerances, labeled fire-rated door assembly construction, wall and floor construction, and other conditions affecting performance. Verify doors, frames, and walls have been properly reinforced for hardware installation.
- B. Examine roughing-in for electrical power systems to verify actual locations of wiring connections before electrified door hardware installation.
- C. Submit a list of deficiencies in writing and proceed with installation only after unsatisfactory conditions have been corrected.

3.2 INSTALLATION

- A. Mount door hardware units at heights to comply with the following, unless otherwise indicated or required to comply with governing regulations.
 - 1. Standard Steel Doors and Frames: ANSI/SDI A250.8.
 - 2. Custom Steel Doors and Frames: HMMA 831.
 - 3. Interior Architectural Wood Flush Doors: ANSI/WDMA I.S. 1A
 - 4. Installation Guide for Doors and Hardware: DHI TDH-007-20
- B. Install door hardware in accordance with NFPA 80, NFPA 101 and provide post-install inspection, testing as specified in section 1.03.E unless otherwise required to comply with governing regulations.
- C. Install each hardware item in compliance with manufacturer's instructions and recommendations, using only fasteners provided by manufacturer.
- D. Do not install surface mounted items until finishes have been completed on substrate. Protect all installed hardware during painting.
- E. Set units level, plumb and true to line and location. Adjust and reinforce attachment substrate as necessary for proper installation and operation.
- F. Drill and countersink units that are not factory prepared for anchorage fasteners. Space fasteners and anchors according to industry standards.
- G. Install operating parts so they move freely and smoothly without binding, sticking, or excessive clearance.
- H. Hinges: Install types and in quantities indicated in door hardware schedule but not fewer than quantity recommended by manufacturer for application indicated.
- I. Lock Cylinders:
 - 1. Install construction cores to secure building and areas during construction period.
 - 2. Replace construction cores with permanent cores as indicated in keying section.
 - 3. Furnish permanent cores to Owner for installation.
- J. Wiring: Coordinate with Division 26, ELECTRICAL and Division 28 ELECTRONIC SAFETY AND SECURITY sections for:
 - 1. Conduit, junction boxes and wire pulls.
 - 2. Connections to and from power supplies to electrified hardware.
 - 3. Connections to fire/smoke alarm system and smoke evacuation system.
 - 4. Connection of wire to door position switches and wire runs to central room or area, as directed by Architect.
 - 5. Connections to panel interface modules, controllers, and gateways.
 - 6. Testing and labeling wires with Architect's opening number.
- K. Continuous Hinges: Re-locate the door and frame fire rating labels where they will remain visible so that the hinge does not cover the label once installed.

- L. Door Closers & Auto Operators: Mount closers/operators on room side of corridor doors, inside of exterior doors, and stair side of stairway doors from corridors. Mount closers/operators so they are not visible in corridors, lobbies and other public spaces unless approved by Architect.
- M. Overhead Stops/ HOLDERS: Mount overhead stops/holders on room side of corridor doors, inside of exterior doors, and stair side of stairway doors.
- N. Power Supplies: Locate power supplies as indicated or, if not indicated, above accessible ceilings or in equipment room, or alternate location as directed by Architect.
- O. Thresholds:
 - 1. Set thresholds in full bed of sealant complying with requirements specified in Division 07 Section "Joint Sealants."
 - 2. Aluminum thresholds to be cut-in, and scribed around mullions, frame members, and stops. Do not butt to thresholds. Provide a continuous surface across full width of opening from jamb to jamb.
 - 3. Where aluminum panic-type (rabbeted) thresholds with neoprene inserts are specified, undercut doors as required to properly mate with seal in threshold.
- P. Stops: Provide floor stops for doors unless wall or other type stops are indicated in door hardware schedule. Do not mount floor stops where they may impede traffic or present tripping hazard.
- Q. Perimeter Gasketing:
 - 1. Apply to head and jamb, forming seal between door and frame.
 - 2. Install gasketing in a manner eliminating need to cut any seal to install surface mounted hardware. Install compatible mounting bracket for surface mounted hardware unless minimum 1/4 inch thick solid aluminum seals are provided for mounting of surface applied hardware.
- R. Meeting Stile Gasketing: Fasten to meeting stiles, forming seal when doors are closed.
- S. Door Bottoms and Sweeps: Apply to bottom of door, forming seal with threshold when door is closed.

3.3 ADJUSTING

- A. Initial Adjustment: Adjust and check each operating item of door hardware and each door to ensure proper operation or function of every unit. Replace units that cannot be adjusted to operate as intended. Adjust door control devices to compensate for final operation of heating and ventilating equipment and to comply with referenced accessibility requirements.
 - 1. Door Closers: Adjust sweep period to comply with accessibility requirements and requirements of authorities having jurisdiction.
- B. Occupancy Adjustment: Approximately three to six months after date of Substantial Completion, examine and readjust each item of door hardware, including adjusting operating forces, as necessary to ensure function of doors and door hardware.

3.4 CLEANING AND PROTECTION

- A. Clean adjacent surfaces soiled by door hardware installation.

- B. Clean operating items per manufacturer's instructions to restore proper function and finish.
- C. Provide final protection and maintain conditions that ensure door hardware is without damage or deterioration at time of Substantial Completion.

3.5 DOOR HARDWARE SCHEDULE

- A. The intent of the hardware specification is to specify the hardware for interior and exterior doors, and to establish a type, continuity, and standard of quality. However, it is the door hardware supplier's responsibility to thoroughly review existing conditions, schedules, specifications, drawings, and other Contract Documents to verify the suitability of the hardware specified.
- B. Discrepancies, conflicting hardware, and missing items are to be brought to the attention of the architect with corrections made prior to the bidding process. Omitted items not included in a hardware set should be scheduled with the appropriate additional hardware required for proper application.
- C. Hardware items are referenced in the following hardware schedule. Refer to the above specifications for special features, options, cylinders/keying, and other requirements.
- D. Hardware Sets:

149070 OPT0476037 Version 1

HARDWARE GROUP NO. 01

A103

PROVIDE EACH DOOR(S) WITH THE FOLLOWING:

<u>QTY</u>		<u>DESCRIPTION</u>	<u>CATALOG NUMBER</u>	<u>FINISH</u>	<u>MFR</u>
3	EA	HINGE	5BB1HW 4.5 X 4.5	652	IVE
1	EA	STOREROOM LOCK	ND80BDC RHO	626	SCH
1	EA	SFIC EVEREST CORE	80-037 EV29 R	626	SCH
1	EA	OH STOP & HOLDER	90F J	630	GLY
3	EA	SILENCERS-MTL	1229-A		TRM

HARDWARE GROUP NO. 02

A104 A112 A113 A115 A116 A117
 A118 C134

PROVIDE EACH DOOR(S) WITH THE FOLLOWING:

<u>QTY</u>		<u>DESCRIPTION</u>	<u>CATALOG NUMBER</u>	<u>FINISH</u>	<u>MFR</u>
3	EA	HINGE	5BB1HW 4.5 X 4.5 NRP	652	IVE
1	EA	CLASSROOM SECURITY W/ INSIDE INDICATOR	ND78BD RHO IS-CRS	626	SCH
2	EA	SFIC EVEREST CORE	80-037 EV29 R	626	SCH
1	EA	SURFACE CLOSER	4050A SCUSH	689	LCN
1	EA	PROTECTION PLATE	10X2 LDW-CSK	630	TRM
3	EA	SILENCERS-MTL	1229-A		TRM

HARDWARE GROUP NO. 03

A108 C113A C113B C135

PROVIDE EACH DOOR(S) WITH THE FOLLOWING:

<u>QTY</u>		<u>DESCRIPTION</u>	<u>CATALOG NUMBER</u>	<u>FINISH</u>	<u>MFR</u>
3	EA	HINGE	5BB1HW 4.5 X 4.5 NRP	652	IVE
1	EA	CLASSROOM SECURITY W/ INSIDE INDICATOR	ND78BD RHO IS-CRS	626	SCH
2	EA	SFIC EVEREST CORE	80-037 EV29 R	626	SCH
1	EA	SURFACE CLOSER	4050A EDA	689	LCN
1	EA	PROTECTION PLATE	10X2 LDW-CSK	630	TRM
1	EA	WALL STOP	1270WV	626/630	TRM
1	EA	GASKETING	488S PSA H & J	BK	ZER

HARDWARE GROUP NO. 04

A111 A119 B135A

PROVIDE EACH DOOR(S) WITH THE FOLLOWING:

<u>QTY</u>		<u>DESCRIPTION</u>	<u>CATALOG NUMBER</u>	<u>FINISH</u>	<u>MFR</u>
3	EA	HINGE	5BB1HW 4.5 X 4.5 NRP	652	IVE
1	EA	CLASSROOM SECURITY W/ INSIDE INDICATOR	ND78BD RHO IS-CRS	626	SCH
2	EA	SFIC EVEREST CORE	80-037 EV29 R	626	SCH
1	EA	SURFACE CLOSER	4050A SCUSH	689	LCN
1	EA	PROTECTION PLATE	10X2 LDW-CSK	630	TRM
1	EA	GASKETING	488S PSA H & J	BK	ZER

HARDWARE GROUP NO. 05

A114

PROVIDE EACH DOOR(S) WITH THE FOLLOWING:

<u>QTY</u>		<u>DESCRIPTION</u>	<u>CATALOG NUMBER</u>	<u>FINISH</u>	<u>MFR</u>
3	EA	HINGE	5BB1HW 4.5 X 4.5	630	IVE
1	EA	STOREROOM LOCK	ND80BDC RHO	626	SCH
1	EA	SFIC EVEREST CORE	80-037 EV29 R	626	SCH
1	EA	SURFACE CLOSER	4050A RW/PA	689	LCN
1	EA	PROTECTION PLATE	10X2 LDW-CSK	630	TRM
1	EA	WALL STOP	1270WV	626/630	TRM
3	EA	SILENCERS-MTL	1229-A		TRM

HARDWARE GROUP NO. 06

B104A B104B B105A B105B

PROVIDE EACH DOOR(S) WITH THE FOLLOWING:

<u>QTY</u>		<u>DESCRIPTION</u>	<u>CATALOG NUMBER</u>	<u>FINISH</u>	<u>MFR</u>
	EA	NOTE	CASED OPENING		

HARDWARE GROUP NO. 07

B106 C127

PROVIDE EACH DOOR(S) WITH THE FOLLOWING:

<u>QTY</u>		<u>DESCRIPTION</u>	<u>CATALOG NUMBER</u>	<u>FINISH</u>	<u>MFR</u>
3	EA	HINGE	5BB1HW 4.5 X 4.5	630	IVE
1	EA	STOREROOM LOCK	ND80BDC RHO	626	SCH
1	EA	SFIC EVEREST CORE	80-037 EV29 R	626	SCH
1	EA	OH STOP	90S	630	GLY
1	EA	SURFACE CLOSER	4050A DEL RW/PA	689	LCN
1	EA	PROTECTION PLATE	10X2 LDW-CSK	630	TRM
1	EA	MOP PLATE	4X1 LDW-CSK	630	TRM
1	EA	GASKETING	488S PSA H & J	BK	ZER

HARDWARE GROUP NO. 08

B107

PROVIDE EACH DOOR(S) WITH THE FOLLOWING:

<u>QTY</u>		<u>DESCRIPTION</u>	<u>CATALOG NUMBER</u>	<u>FINISH</u>	<u>MFR</u>
3	EA	HINGE	5BB1HW 4.5 X 4.5	652	IVE
1	EA	PRIVACY LOCK W/ OUTSIDE INDICATOR	ND40S RHO OS-OCC	626	SCH
1	EA	SURFACE CLOSER	4050A RW/PA	689	LCN
1	EA	PROTECTION PLATE	10X2 LDW-CSK	630	TRM
1	EA	MOP PLATE	4X1 LDW-CSK	630	TRM
1	EA	WALL STOP	1270WV	626/630	TRM
1	EA	GASKETING	488S PSA H & J	BK	ZER

HARDWARE GROUP NO. 09

B134

PROVIDE EACH DOOR(S) WITH THE FOLLOWING:

<u>QTY</u>		<u>DESCRIPTION</u>	<u>CATALOG NUMBER</u>	<u>FINISH</u>	<u>MFR</u>
3	EA	HINGE	5BB1HW 4.5 X 4.5	652	IVE
1	EA	CLASSROOM SECURITY W/ INSIDE INDICATOR	ND78BD RHO IS-CRS	626	SCH
2	EA	SFIC EVEREST CORE	80-037 EV29 R	626	SCH
1	EA	SURFACE CLOSER	4050A RW/PA	689	LCN
1	EA	PROTECTION PLATE	10X2 LDW-CSK	630	TRM
1	EA	WALL STOP	1270WV	626/630	TRM
3	EA	SILENCERS-MTL	1229-A		TRM

HARDWARE GROUP NO. 10

B135F

PROVIDE EACH DOOR(S) WITH THE FOLLOWING:

<u>QTY</u>		<u>DESCRIPTION</u>	<u>CATALOG NUMBER</u>	<u>FINISH</u>	<u>MFR</u>
3	EA	HINGE	5BB1HW 4.5 X 4.5 NRP	652	IVE
1	EA	STOREROOM LOCK	ND80BDC RHO	626	SCH
1	EA	SFIC EVEREST CORE	80-037 EV29 R	626	SCH
1	EA	SURFACE CLOSER	4050A SCUSH	689	LCN
1	EA	PROTECTION PLATE	10X2 LDW-CSK	630	TRM
3	EA	SILENCERS-MTL	1229-A		TRM

HARDWARE GROUP NO. 11

C111

PROVIDE EACH DOOR(S) WITH THE FOLLOWING:

<u>QTY</u>		<u>DESCRIPTION</u>	<u>CATALOG NUMBER</u>	<u>FINISH</u>	<u>MFR</u>
3	EA	HINGE	5BB1HW 4.5 X 4.5	652	IVE
1	EA	CLASSROOM DEADBOLT W/ OUTSIDE INDICATOR	B663BDC OS-LOC	626	SCH
1	EA	SFIC EVEREST CORE	80-037 EV29 R	626	SCH
1	EA	PUSH/PULL PLATE SET	1895-4B	630	TRM
1	EA	SURFACE CLOSER	4050A RW/PA	689	LCN
1	EA	PROTECTION PLATE	10X2 LDW-CSK	630	TRM
1	EA	MOP PLATE	4X1 LDW-CSK	630	TRM
1	EA	WALL STOP	1270WV	626/630	TRM
3	EA	SILENCERS-MTL	1229-A		TRM

HARDWARE GROUP NO. 12

B135B

C115

C116

C120

C121

C123

C124

C126

C131

PROVIDE EACH DOOR(S) WITH THE FOLLOWING:

<u>QTY</u>		<u>DESCRIPTION</u>	<u>CATALOG NUMBER</u>	<u>FINISH</u>	<u>MFR</u>
3	EA	HINGE	5BB1HW 4.5 X 4.5	652	IVE
1	EA	CLASSROOM SECURITY W/ INSIDE INDICATOR	ND78BD RHO IS-CRS	626	SCH
2	EA	SFIC EVEREST CORE	80-037 EV29 R	626	SCH
1	EA	OH STOP	90S	630	GLY
1	EA	SURFACE CLOSER	4050A RW/PA	689	LCN
1	EA	PROTECTION PLATE	10X2 LDW-CSK	630	TRM
1	EA	GASKETING	488S PSA H & J	BK	ZER

HARDWARE GROUP NO. 13

C117

C119

PROVIDE EACH DOOR(S) WITH THE FOLLOWING:

<u>QTY</u>		<u>DESCRIPTION</u>	<u>CATALOG NUMBER</u>	<u>FINISH</u>	<u>MFR</u>
3	EA	HINGE	5BB1HW 4.5 X 4.5 NRP	652	IVE
1	EA	CLASSROOM SECURITY W/ INSIDE INDICATOR	ND78BD RHO IS-CRS	626	SCH
2	EA	SFIC EVEREST CORE	80-037 EV29 R	626	SCH
1	EA	SURFACE CLOSER	4050A EDA	689	LCN
1	EA	PROTECTION PLATE	10X2 LDW-CSK	630	TRM
1	EA	WALL STOP	1270WV	626/630	TRM
3	EA	SILENCERS-MTL	1229-A		TRM

HARDWARE GROUP NO. 14

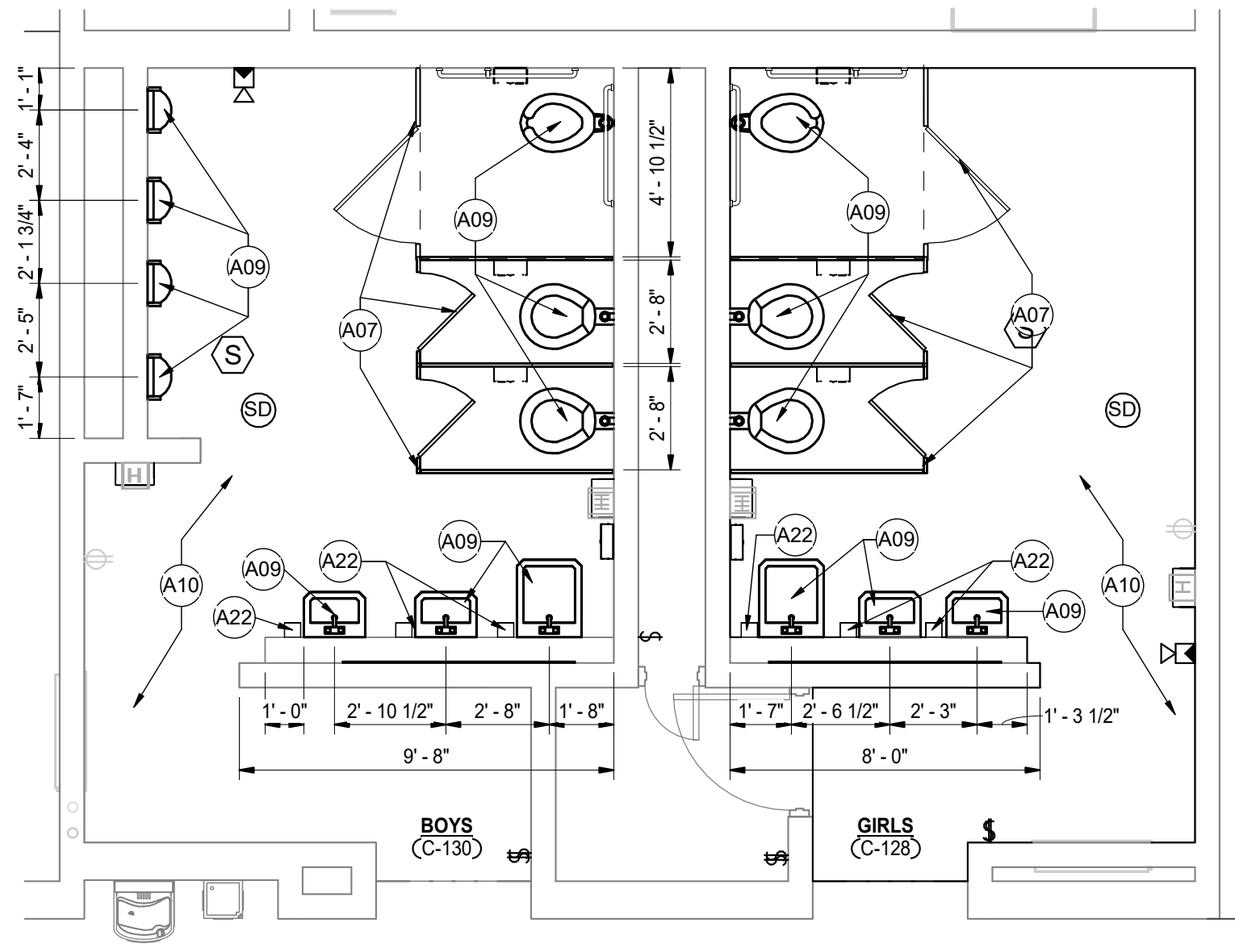
C133A C133B

PROVIDE EACH DOOR(S) WITH THE FOLLOWING:

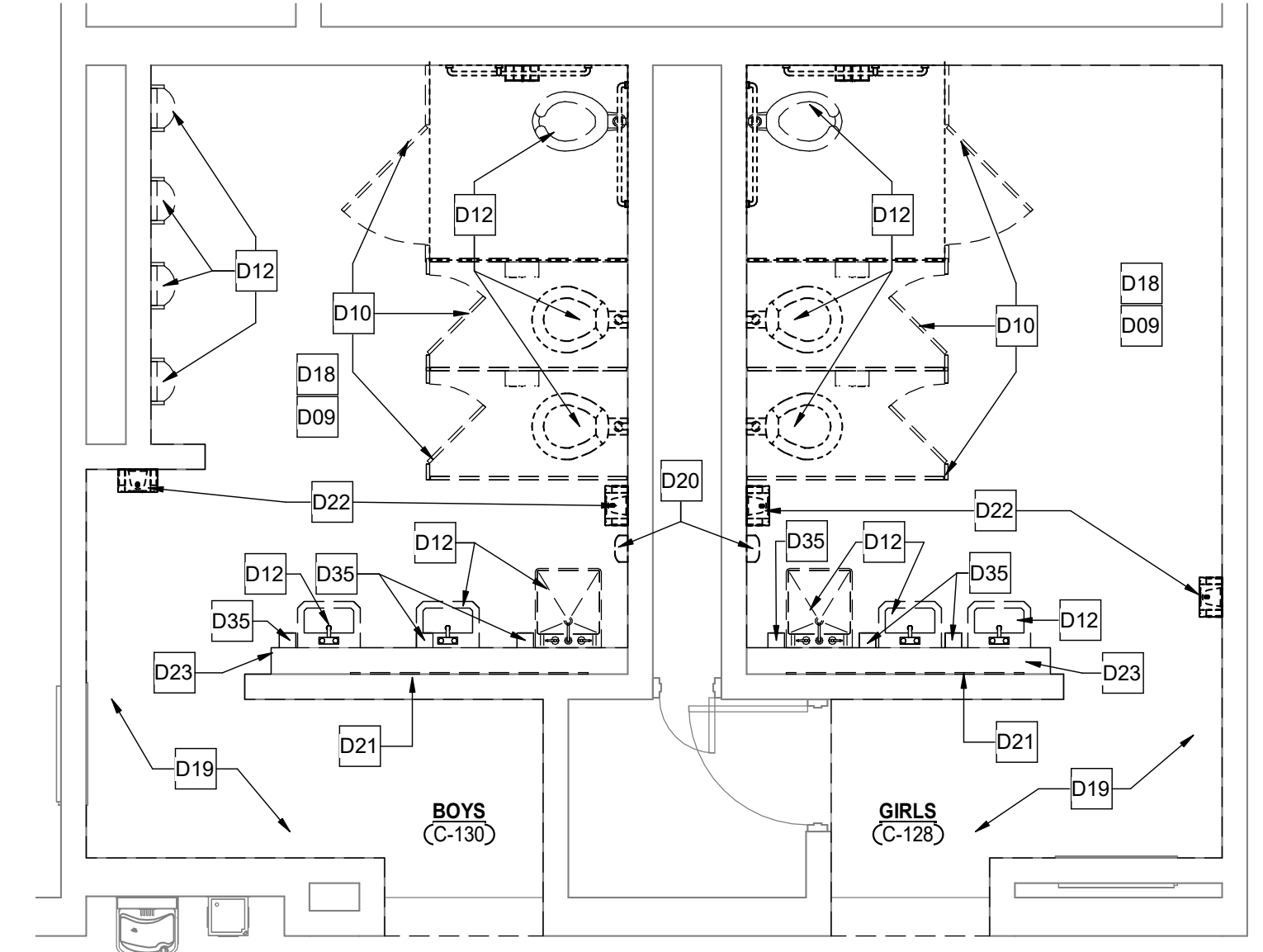
<u>QTY</u>		<u>DESCRIPTION</u>	<u>CATALOG NUMBER</u>	<u>FINISH</u>	<u>MFR</u>
3	EA	HINGE	5BB1HW 4.5 X 4.5 NRP	652	IVE
1	EA	FIRE EXIT HARDWARE	99-L-F-2SI-06	626	VON
1	EA	SFIC MORTISE CYL.	80-110 (W/ DISP CONST CORE)	626	SCH
1	EA	SFIC RIM CYLINDER	80-116 (W/ DISP CONST CORE)	626	SCH
2	EA	SFIC EVEREST CORE	80-037 EV29 R	626	SCH
1	EA	SURFACE CLOSER	4050A SCUSH	689	LCN
1	EA	PROTECTION PLATE	10X2 LDW-CSK	630	TRM
1	EA	GASKETING	488S PSA H & J	BK	ZER

END OF SECTION

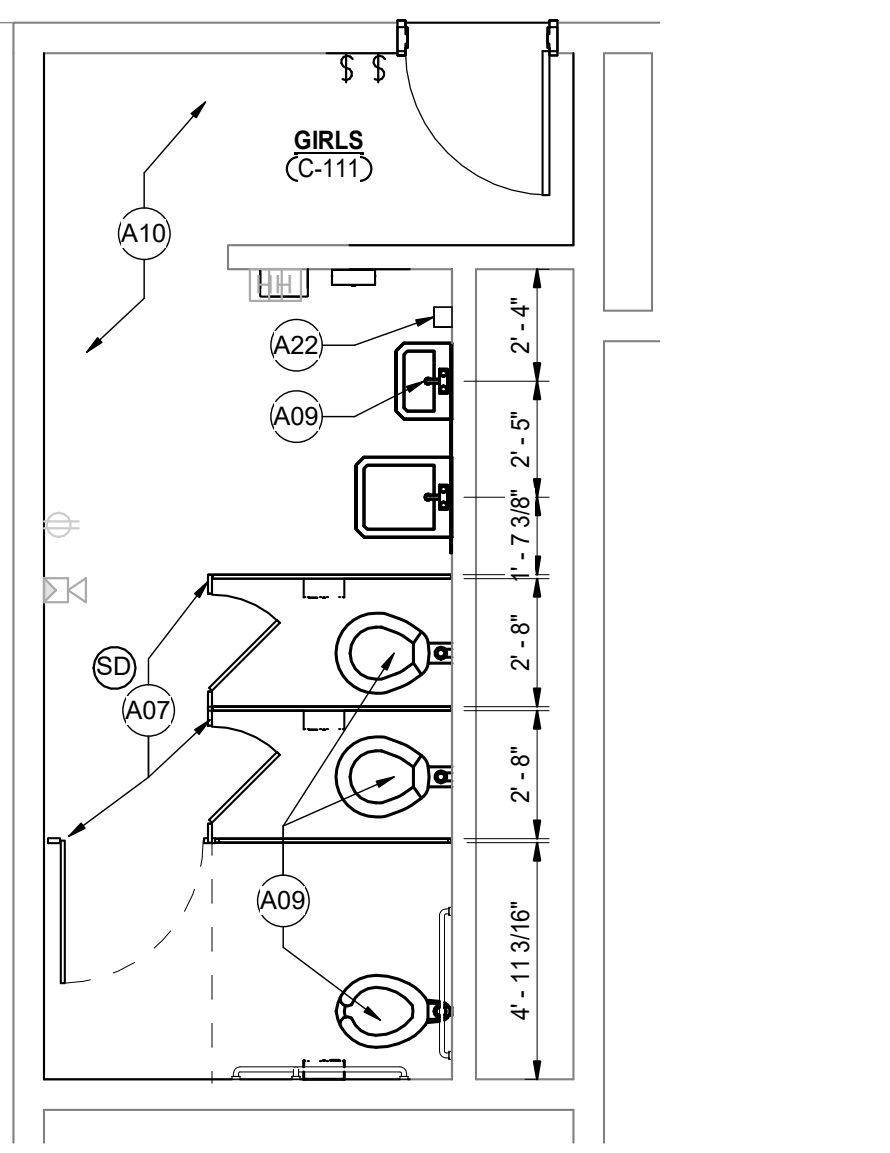
3/31/2026 11:47:18 AM C:\Users\cdice\Documents\25-185 Tri-Township Schools Renovation and Related Work - ARCH\R25_cdice\ZMLR.rvt



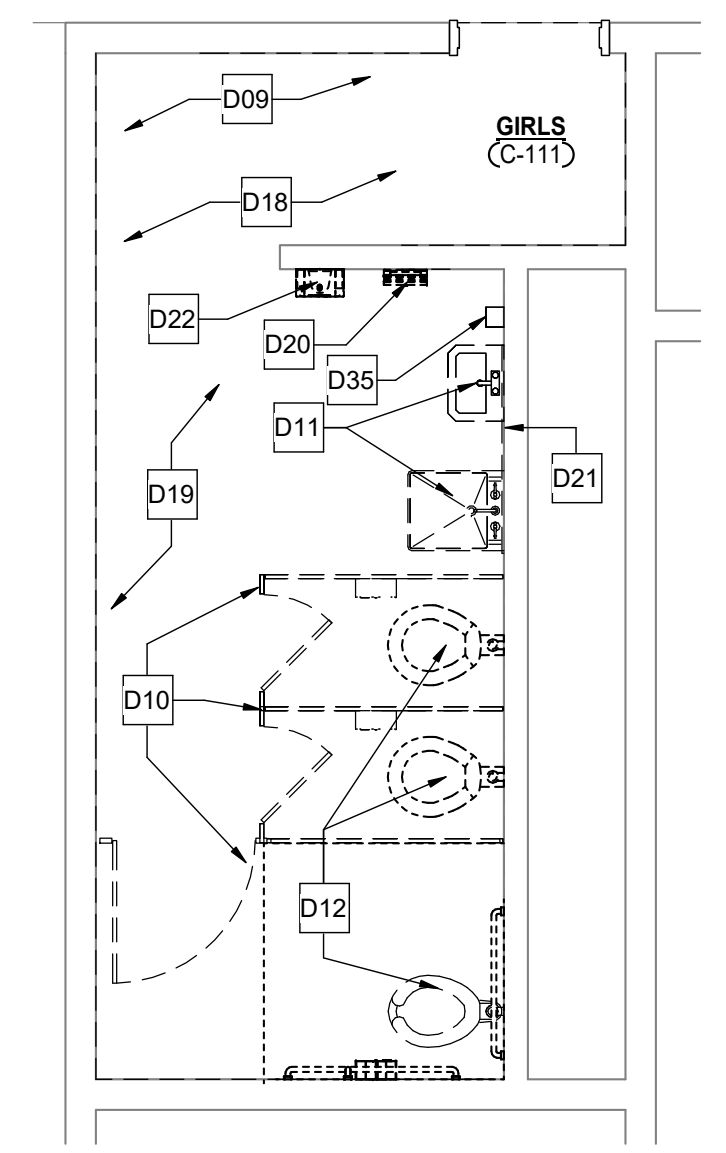
UNIT "C" ELEMENTARY RESTROOM FLOOR PLAN
8
A-140 1/4" = 1'-0"



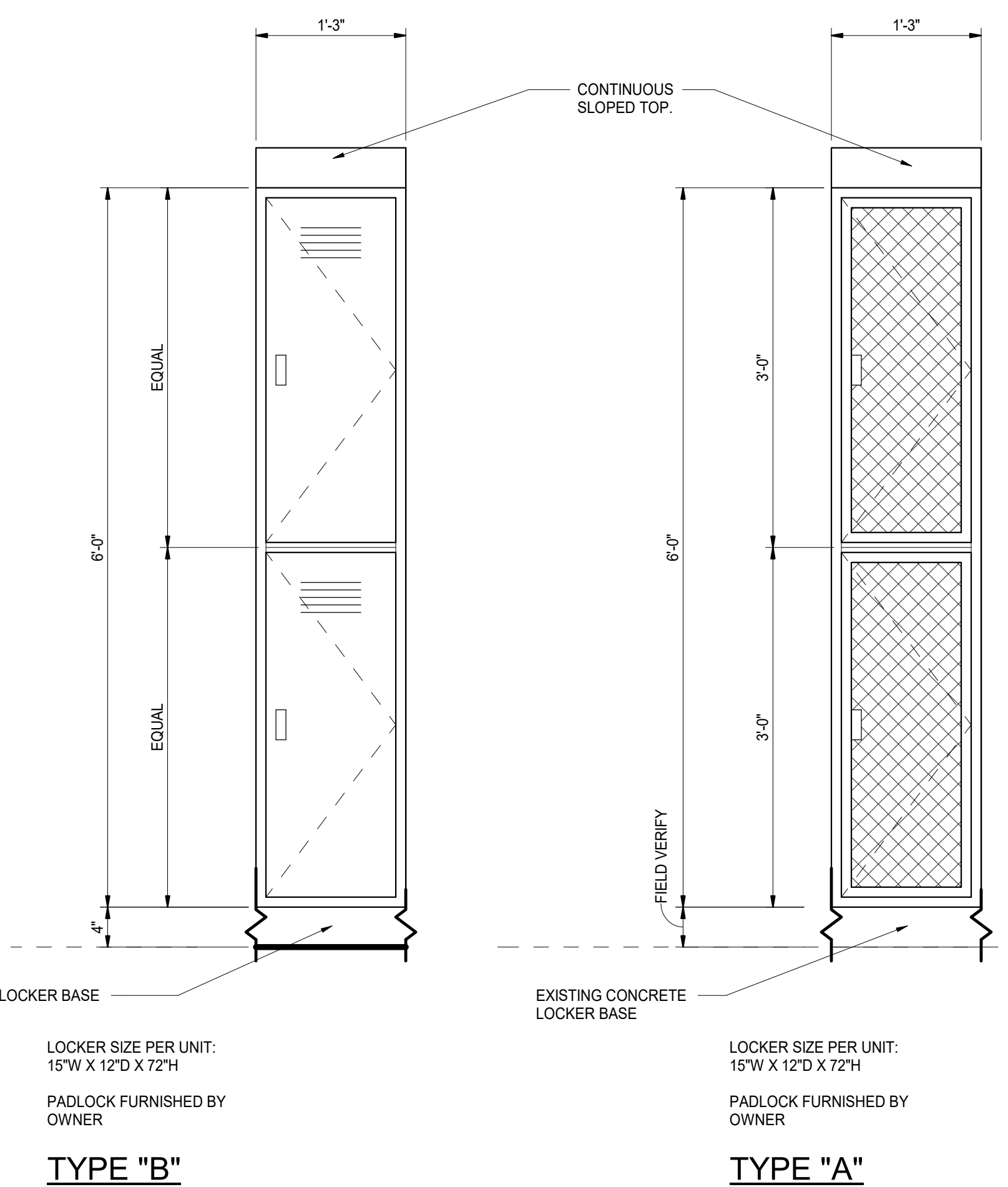
UNIT "C" ELEMENTARY RESTROOM DEMO PLAN
7
A-140 1/4" = 1'-0"



GIRLS RESTROOM FLOOR PLAN
6
A-140 1/4" = 1'-0"



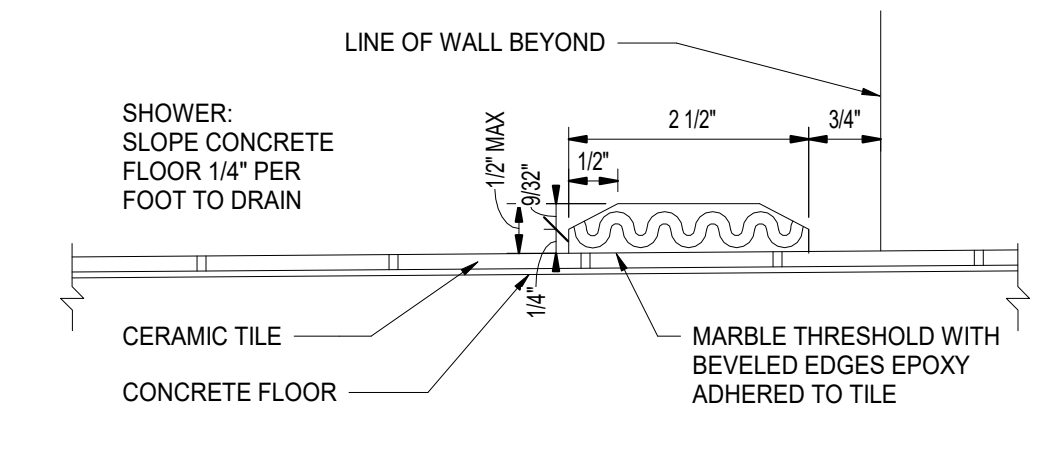
GIRLS RESTROOM DEMO PLAN
5
A-140 1/4" = 1'-0"



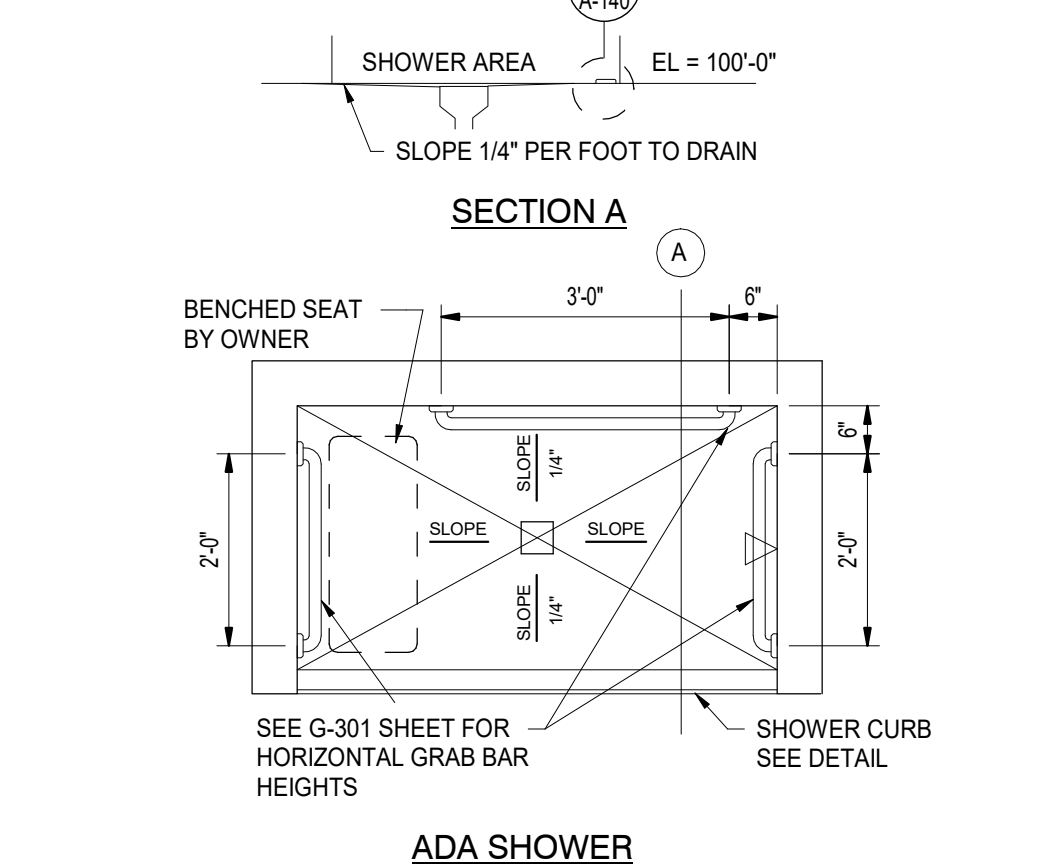
TYPICAL VENTED LOCKER ELEVATIONS
9
A-140 1" = 1'-0"

DEMOLITION PLAN NOTES

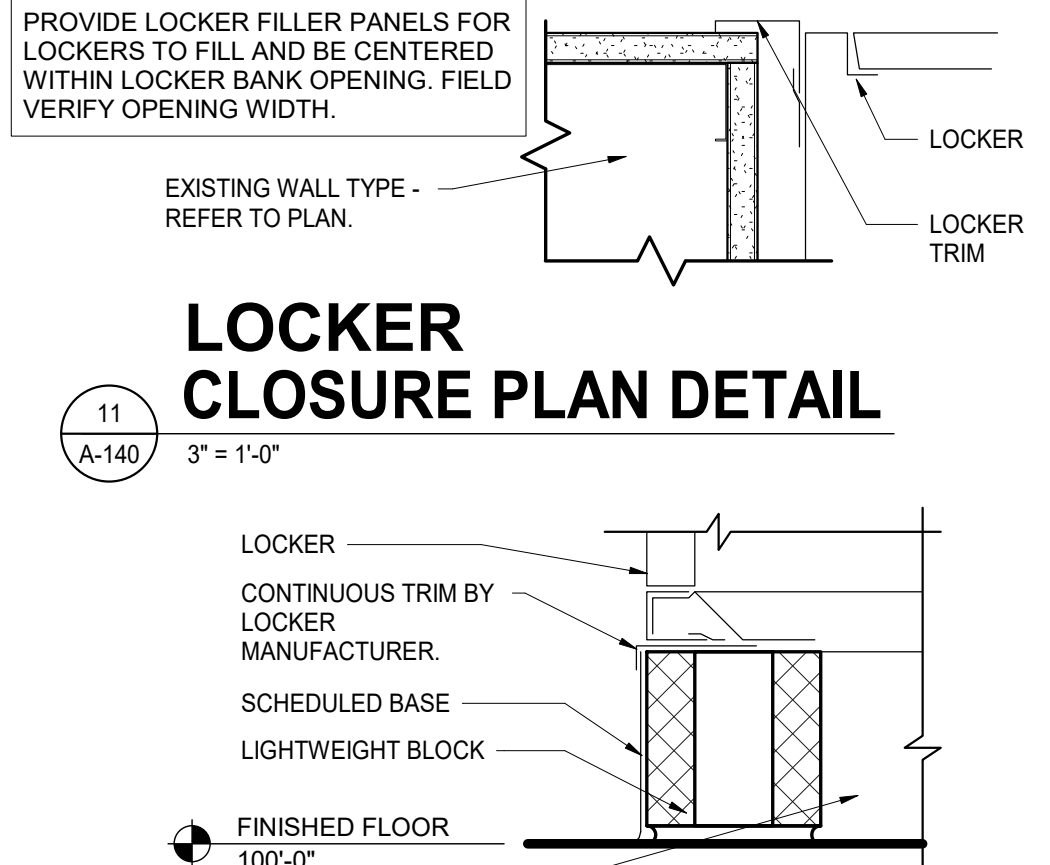
- D01 PREPARE WALLS FOR NEW PAINT FINISH.
- D02 REMOVE EXISTING DOOR LEAF IN ITS ENTIRETY. TURN OVER DOOR HARDWARE TO OWNER AND REMOVE METAL TRANSUM PANEL COMPLETE.
- D03 REMOVE EXISTING ALUMINUM WINDOW IN ITS ENTIRETY. PROTECT REMAINING FRAM OF HIDDEN WINDOW SYSTEM.
- D04 REMOVE EXISTING METAL PANEL SYSTEM AND WOOD SUPPORT FRAMING COMPLETE. CONTRACTOR IS TO LEAVE THE EXISTING WINDOW SYSTEM BEHIND PANELS INTACT AND NOT DAMAGED.
- D05 REMOVE METAL LOCKERS IN ITS ENTIRETY. PATCH WALL CONSTRUCTION FROM LOCKER ANCHORS.
- D06 REMOVE EXISTING METAL PANELS AND REPLACE ANY DAMAGED OR ROTTED WOOD FRAMING. CONTRACTOR IS TO LEAVE EXISTING RIGID INSULATION IN PLACE OR REPLACE ANY RIGID INSULATION DAMAGED FROM REMOVAL OF PANEL SYSTEM.
- D07 REMOVE METAL LOCKERS DOWN TO BASE COMPLETE. PATCH MASONRY WALL WHERE LOCKER ANCHORS REMOVED.
- D08 REMOVE METAL ATHLETIC LOCKERS COMPLETE AND REMOVE MASONRY AND CONCRETE LOCKER BASE TO CONCRETE SUBFLOOR. PREPARE SUBFLOOR FOR NEW FINISH.
- D09 REMOVE EXISTING CERAMIC TILE FLOOR AND WALL BASE COMPLETE. PATCH AND REPAIR MUD-BASE FLOOR SYSTEM AND MASONRY/CONCRETE WALL AS REQUIRED.
- D10 REMOVE EXISTING TOILET AND SHOWER PARTITIONS IN ITS ENTIRETY, INCLUDING ALL ACCESSORIES. TURN ACCESSORIES OVER TO OWNER.
- D11 REMOVE EXISTING TOILET ROOM ACCESSORIES AND TURN OVER TO OWNER. PATCH WALL FROM ANY ANCHORS.
- D12 REMOVE PLUMBING FIXTURES. REFER TO PLUMBING DRAWINGS FOR ADDITIONAL WORK.
- D13 REMOVE SHOWER FAUCET AND HEAD. REFER TO PLUMBING DRAWINGS FOR ADDITIONAL WORK.
- D14 REMOVE EXISTING FLOOR SYSTEM AS REQUIRED FOR NEW TRENCH DRAIN AND FLOOR DRAINS. REFER TO PLUMBING DRAWINGS FOR ADDITIONAL WORK.
- D15 REMOVE CERAMIC TILE AND CONCRETE BUMP AT OPENING TO SHOWER. PATCH FLOOR AS REQUIRED TO RECEIVE NEW FINISH.
- D16 REMOVE EXISTING SUSPENDED FAN COIL UNIT COMPLETE. REFER TO MECHANICAL DRAWINGS FOR ADDITIONAL WORK.
- D17 REMOVE EXISTING ACOUSTICAL TILE SYSTEM LIGHT FIXTURES, ET COMPLETE. REFER TO ELECTRICAL DRAWINGS FOR ADDITIONAL WORK.
- D18 REMOVE CERAMIC WALL TILE AND CERAMIC WALL BASE BACK TO SUBSTRATE. PREPARE FOR NEW TILE FINISH.
- D19 REMOVE EXISTING RECESSED STAINLESS STEEL TOWEL DISPENSER COMPLETE AND INFILL EXISTING OPENING TO BE FLUSH TO EXISTING SUBSTRATE. PREPARE FOR NEW TILE FINISH.
- D20 REMOVE EXISTING MIRROR AND STORE FOR REINSTALLATION.
- D21 REMOVE ELECTRIC HAND DRYERS AND EXPOSED ELECTRICAL CONDUITS. CUT INTO WALL FOR NEW ELECTRICAL CONNECTION PLACEMENT. REFER TO ELECTRICAL DRAWINGS FOR ADDITIONAL WORK.
- D22 REMOVE EXISTING MARBLE SHELF.
- D23 REMOVE EXISTING ALUMINUM WINDOW UNITS IN ITS ENTIRETY. PREPARE OPENING FOR NEW ALUMINUM UNIT.
- D24 REMOVE EXISTING SEALANT AND BACKER ROD AT METAL PANEL JOINTS COMPLETE. PREPARE JOINTS AND PANELS FOR NEW PAINT FINISH. REFER TO ELEVATIONS FOR ADDITIONAL WORK.
- D25 REFER TO SHEET A-110 FOR ENLARGED DEMO AND ARCHITECTURAL FLOOR PLANS.
- D26 REFER TO SHEET A-140 FOR ENLARGED DEMO AND ARCHITECTURAL TOILET PLANS.
- D27 CAREFULLY REMOVE TACKBOARD OR TACK STRIP AND STORE FOR REINSTALLATION. PATCH AND PREPARE WALLS FOR NEW PAINT FINISH.
- D28 REMOVE WALL PROTECTION WAINSCOT COMPLETE. PULL BACK CARPET BASE TO REMOVE WALL PROTECTION WAINSCOT AS REQUIRED. FIELD CONFIRM. PATCH AND REPAIR WALL TO RECEIVE NEW FINISH.
- D29 CAREFULLY REMOVE CORNER GUARD AND STORE FOR REINSTALLATION. PATCH AND PREPARE WALLS FOR NEW PAINT FINISH.
- D30 REMOVE AND RELOCATE FIRE EXTINGUISHER CABINET. PATCH WALL AFTER REMOVAL.
- D31 REMOVE AED CABINET AND RELOCATE. COORDINATE WITH OWNER FOR NEW LOCATION.
- D32 REMOVE FIRE EXTINGUISHER CABINET COMPLETE AND PATCH WALL.
- D33 CAREFULLY REMOVE TACKBOARD OR TACK STRIP AND STORE FOR RELOCATION. COORDINATE WITH OWNER FOR NEW LOCATION.
- D34 CAREFULLY REMOVE SOAP DISPENSER AND STORE FOR REINSTALLATION. PATCH AND PREPARE WALLS FOR NEW FINISH.
- D35 REMOVE FACE BRICK IN ITS ENTIRETY.
- D36 REMOVE SHOWER HOOKS COMPLETE.
- D37 REMOVE DOOR IN ITS ENTIRETY.
- D38 REMOVE DOOR IN ITS ENTIRETY.



SHOWER THRESHOLD
4
A-140 6" = 1'-0"



ADA SHOWER
3
A-140 1/2" = 1'-0"



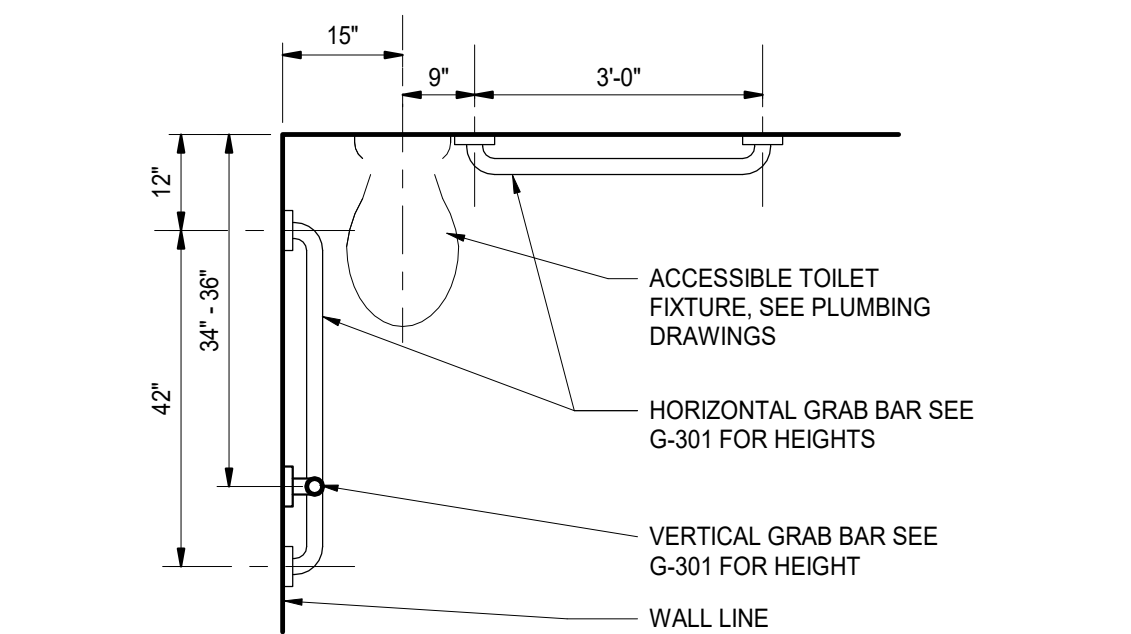
LOCKER CLOSURE PLAN DETAIL
11
A-140 3" = 1'-0"

GENERAL RESTROOM NOTES:

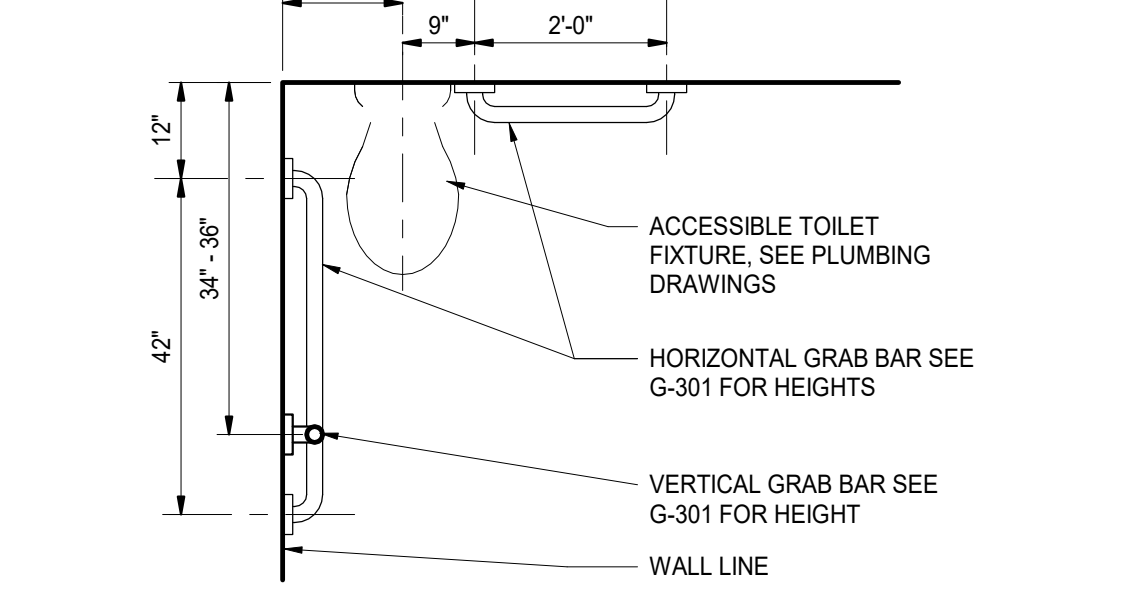
- A. FOR GENERAL PROJECT NOTES, MATERIAL INDICATIONS LEGEND, SYMBOL LEGEND, ABBREVIATION, ETC., REFER TO SHEET G-301.
- B. DEPTH OF ALL TOILET ENCLOSURES SHALL BE A MINIMUM OF 5'-0" CLEAR INSIDE DIMENSION UNLESS NOTED OTHERWISE.
- C. REFER TO PLUMBING DRAWINGS FOR FIXTURE TYPES.
- D. REFER TO PLUMBING DRAWINGS FOR FLOOR DRAIN LOCATIONS.
- E. COORDINATE HEIGHT OF GRAB BAR WITH TANK OR FLUSH VALVE OF WALL MOUNTED WATER CLOSET.
- F. INSTALL LAVATORIES AND URINALS AT 2'-6" ON CENTER MINIMUM UNLESS NOTED OTHERWISE.
- G. REFERENCE FINISH PLANS FOR FINISH INFORMATION.
- H. FOR MOUNTING HEIGHTS REFER TO SHEET G-301.

ARCHITECTURAL PLAN NOTES

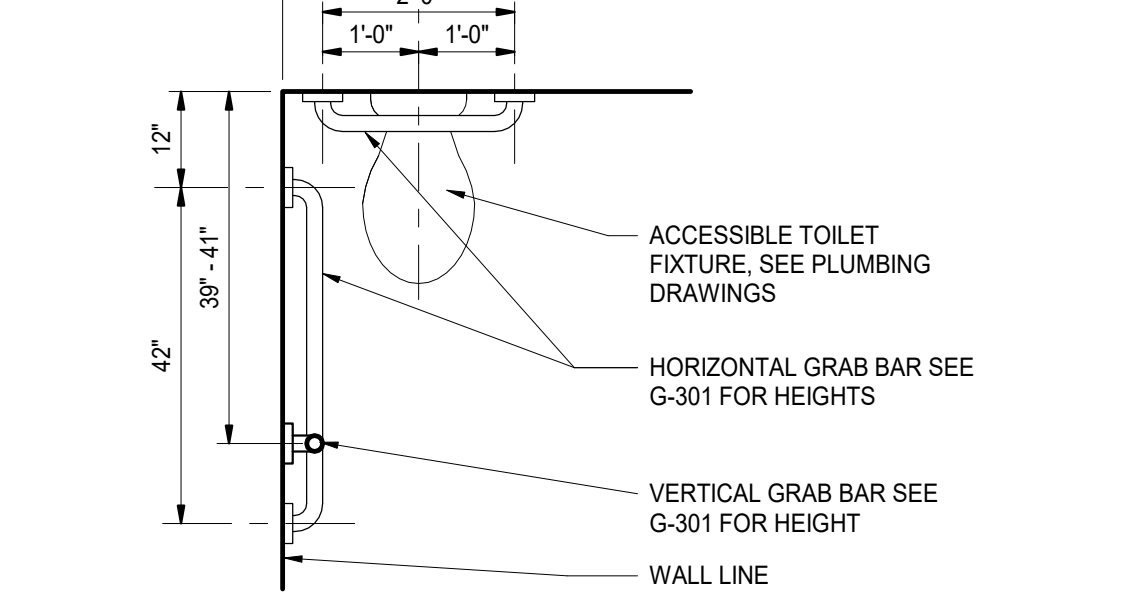
- A01 ALUMINUM WINDOW AND TRIM SET IN MASONRY OPENING.
- A02 ALUMINUM WINDOW AND TRIM SET IN EXISTING WINDOW FRAME OPENING.
- A03 ALUMINUM COMPOSITE PANEL SYSTEM ON TREATED WOOD SUPPORT SYSTEM ON MASONRY SUBSTRATE.
- A04 ALUMINUM COMPOSITE PANEL SYSTEM ON TREATED WOOD SUPPORT AND ALUMINUM WINDOW AND TRIM SET IN MASONRY OPENING.
- A05 NEW TYPED TIER METAL LOCKERS. REFER TO DETAIL TYPE 'B' ON SHEET 9/A-140.
- A06 NEW TYPED TIER METAL LOCKERS. REFER TO DETAIL TYPE 'A' ON SHEET 9/A-140.
- A07 NEW PLASTIC TOILET PARTITIONS. [AD-01]
- A08 NEW PLUMBING FIXTURES. REFER TO PLUMBING DRAWINGS.
- A09 PATCH AND REPAIR EXISTING WALL AND FLOOR WHERE EQUIPMENT AND ENCLOSURES HAVE BEEN REMOVED. MATCH EXISTING FINISHES AS CLOSE AS POSSIBLE FOR NEW FINAL FINISH. REFER TO FINISH PLANS.
- A10 CONTRACTOR IS TO PAINT THE EXISTING METAL PANELS PER SPECIFICATIONS AND REINSTALL BACKER ROD AND MATCHING COLOR SEALANT IN METAL PANEL JOINTS.
- A11 REFER TO SHEET A-110 FOR ENLARGED FLOOR PLAN.
- A12 REFER TO SHEET A-140 FOR ENLARGED TOILET ROOM PLANS.
- A13 REINSTALL TACKBOARD THAT WAS REMOVED AND STORED DURING DEMOLITION. COORDINATE MOUNTING HEIGHT WITH OWNER.
- A14 REINSTALL TACKBOARD OR TACK STRIP THAT WAS REMOVED AND STORED DURING DEMOLITION. REINSTALL IN SAME LOCATION. COORDINATE MOUNTING HEIGHT WITH OWNER.
- A15 REINSTALL CORNER GUARD THAT WAS REMOVED AND STORED DURING DEMOLITION.
- A16 REINSTALL FIRE EXTINGUISHER CABINET IN WALL EXTENSION AT NEW LOCATION.
- A17 PATCH WALL WHERE FIRE EXTINGUISHER CABINET HAS BEEN REMOVED.
- A18 NEW 5/8 GYP BOARD ON MTL STUD 1" BACK OF EXISTING BLOCK.
- A19 NEW 6" METAL COLUMN.
- A20 NEW ALUMINUM METAL PANEL.
- A21 REINSTALL SOAP DISPENSER THAT WAS REMOVED AND STORED DURING DEMOLITION. REINSTALL IN SAME LOCATION.
- A22 NEW PLASTIC SHOWER PARTITIONS.
- A23 NEW SHOWER HOOKS.



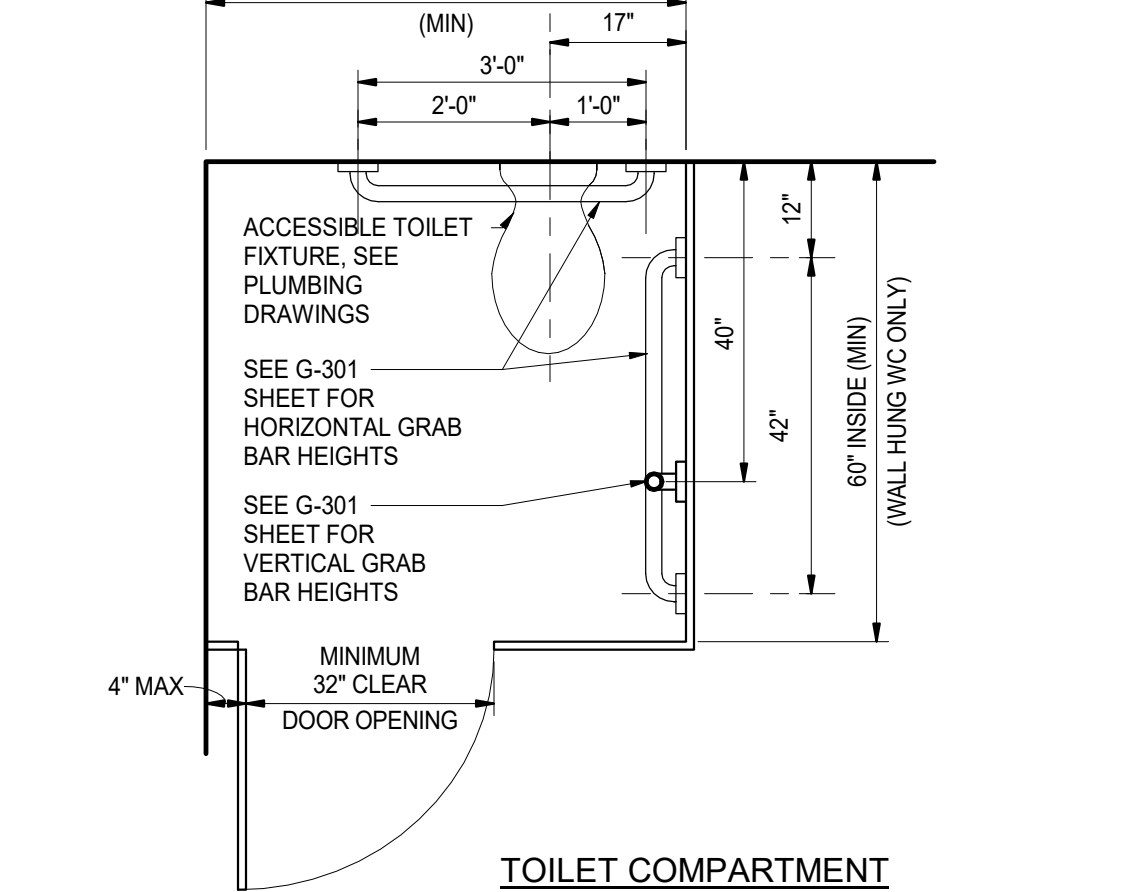
PRIVATE TOILET ROOMS: A-999



PRIVATE TOILET ROOMS: A-999



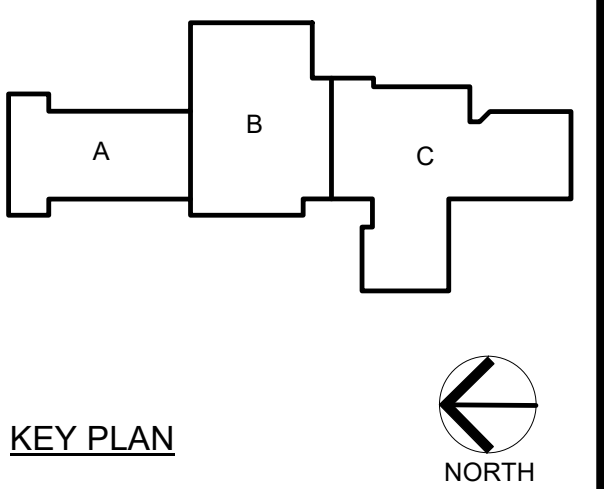
PRIVATE TOILET ROOMS: A-999



TOILET COMPARTMENT
1
A-140 1/2" = 1'-0"



PROJECT:
TRI-TOWNSHIP WANATAH SCHOOL RENOVATION AND RELATED WORK
TRI-TOWNSHIP SCHOOLS
309 SCHOOL DRIVE
WANATAH, IN 46390



100% CD SET

GIBRALTAR DESIGN
4030 Vincennes Rd., Ste. 100
Indianapolis, IN 46226
Homepage: www.GibraltarDesign.com
Email: info@GibraltarDesign.com
Phone 317.580.5777 Fax 317.580.5778

PROJECT: 25-185
DATE: 03/24/26
COORDINATED BY: JPB
DRAWN BY: CED
CHECKED BY: JPB

COPYRIGHT NOTICE:
THE CONCEPTS, DESIGN, PLANS, DETAILS, ETC. SHOWN ON THIS DOCUMENT ARE THE PROPERTY OF GIBRALTAR DESIGN AND WERE CREATED FOR USE ON THIS SPECIFIC PROJECT. NONE OF THIS INFORMATION SHALL BE USED BY ANY PERSON OR FIRM FOR ANY PURPOSE WITHOUT THE EXPRESS WRITTEN CONSENT OF GIBRALTAR DESIGN. THE OWNER MAY RETAIN COPIES FOR INFORMATION AND REFERENCE IN CONNECTION ONLY WITH THIS PROJECT.

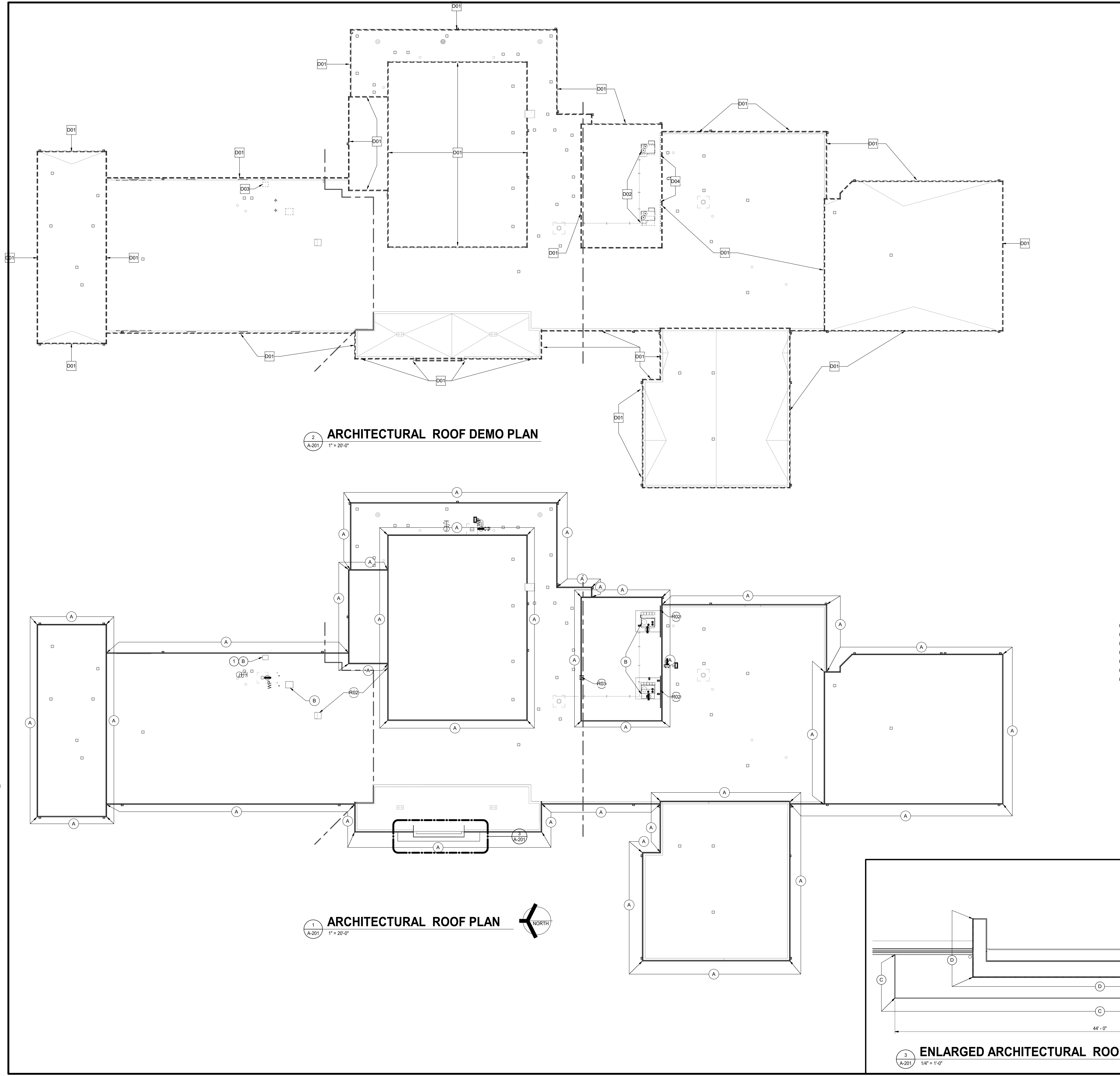
MARK	DATE	ISSUED FOR
AD-01	04/01/26	ADDENDUM 01

DRAWING ENLARGED PLANS AND TYPICAL DETAILS

PROJECT: TRI-TOWNSHIP WANATAH SCHOOL RENOVATION AND RELATED WORK

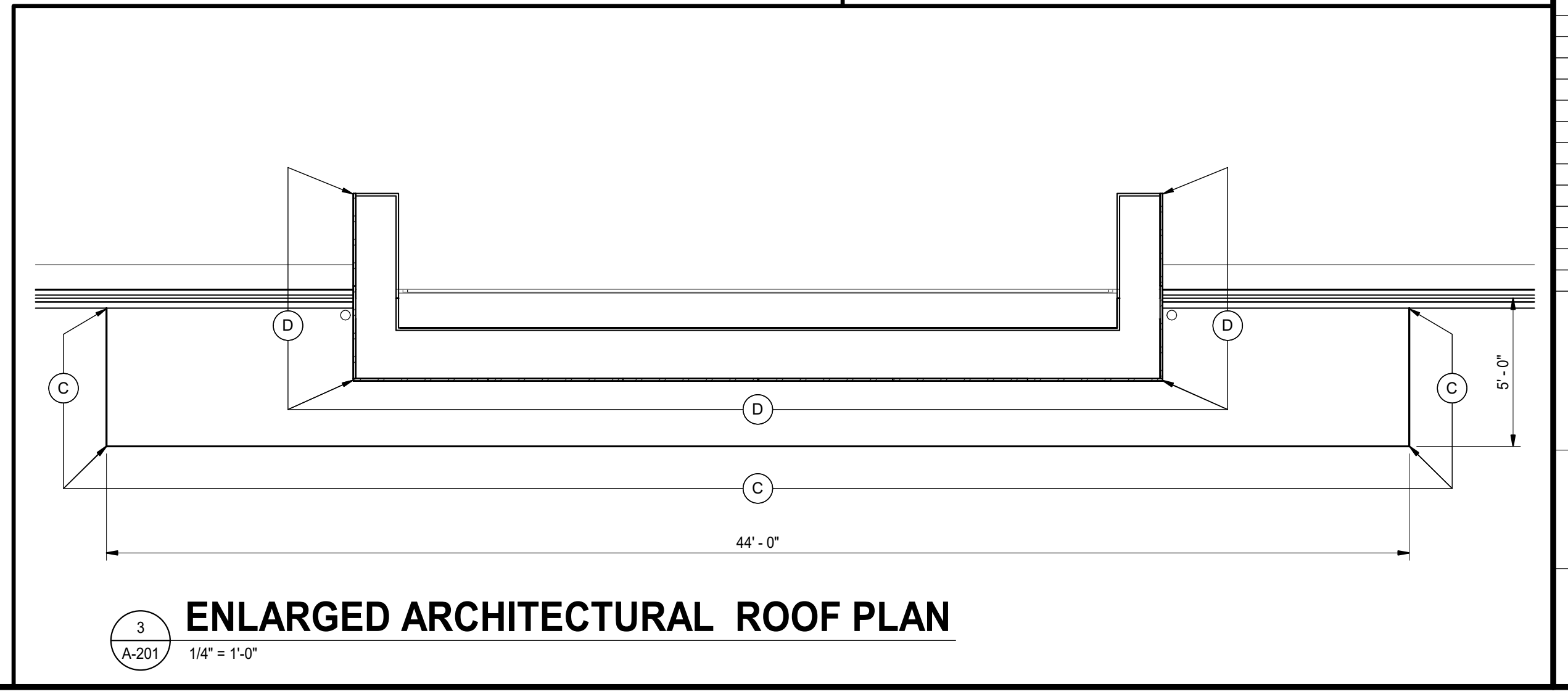
SHEET
A-140

C:\Users\cdice\Documents\25-185 Tri-Township Schools Renovation and Related Work - ARCH\R25_cdfecZMLDR.rvt 3/31/2026 11:46:59 AM



2
A-201
1" = 20'-0"
ARCHITECTURAL ROOF DEMO PLAN

1
A-201
1" = 20'-0"
ARCHITECTURAL ROOF PLAN



3
A-201
1/4" = 1'-0"
ENLARGED ARCHITECTURAL ROOF PLAN

GENERAL ROOFING NOTES:

- A. FOR GENERAL NOTES, MATERIAL IDENTIFICATIONS LEGEND, SYMBOL LEGEND, ABBREVIATIONS, ETC. REFER TO SHEET G-301.
- B. THE ROOFING INSTALLER SHALL VERIFY ALL DIMENSIONS, CLEARANCES, AND ALL EXISTING FIELD CONDITIONS BEFORE STARTING CONSTRUCTION. COMMENCEMENT OF WORK CONSTITUTES ACCEPTANCE OF CONDITIONS. SHOULD DIFFERENT CONDITIONS BE ENCOUNTERED, CONTACT THE ARCHITECT BEFORE PROCEEDING WITH WORK.
- C. THE ROOFING INSTALLER SHALL BE RESPONSIBLE FOR THE REPAIR OR REPLACEMENT OF ALL DAMAGE CAUSED BY THE IMPROPER STORAGE OR STACKING OF ROOFING MATERIALS.
- D. ALL DIMENSIONS INDICATED ON ROOF PLAN ARE APPROXIMATE. THE CONTRACTOR IS RESPONSIBLE FOR OBTAINING ACCURATE FIELD MEASUREMENTS FOR THEIR EXECUTION OF THEIR WORK AND PRIOR TO ANY FABRICATION OF THE VARIOUS MATERIALS.
- E. THE ROOFING CONTRACTOR SHALL PROTECT ALL ROOF DRAINS, SCUPPERS AND DOWNSPOUTS FROM DEBRIS CREATED DURING CONSTRUCTION. THE ROOFING INSTALLER SHALL INSPECT AND CLEAR ALL DRAINS, SCUPPERS, AND DOWNSPOUTS PRIOR TO COMPLETION OF NEW WORK TO ENSURE THAT THEY ARE FREE OF DEBRIS AND FUNCTIONING PROPERLY.
- F. FOR LOCATION, TYPE, AND SIZE OF ALL ROOF TOP MECHANICAL EQUIPMENT REFER TO MECHANICAL DRAWINGS.
- G. PROVIDE FLASHING AT ALL VENTS, MECHANICAL CURBS, COPINGS AND FASCIA IN ACCORDANCE WITH THESE DRAWINGS AND SPECIFICATIONS, AND WITH ROOFING MANUFACTURERS STANDARD DETAILS AND SPECIFICATIONS.
- H. CONTRACTOR TO PROVIDE CRICKETS AND/OR ROOF SADDLES TO PROMOTE POSITIVE DRAINAGE AROUND ALL ROOF TOP PENETRATIONS.
- I. EXISTING SADDLES AND TAPERED INSULATION ARE NOT IMPACTED BY PROJECT AND ARE TO REMAIN.
- J. ALL NEW WOOD BLOCKING & NAILERS SHALL BE TREATED WOOD.
- K. REFER TO ARCHITECTURAL FLOOR PLAN FOR LOCATION OF SECTION CUTS FOR ADDITIONAL INFORMATION.
- L. REMOVE ALL ROOF GRAVEL, RESIDUE, AND ALL PROJECTIONS WHICH WOULD PREVENT THE NEW ROOF INSULATION FROM LAYING FLAT OVER THE ROOF SURFACES.
- M. SEE MECHANICAL DRAWINGS FOR LOCATIONS OF ROOF TOP EQUIPMENT TO BE REPLACED OR IS NEW.
- N. DEMOLITION AND REMOVAL OPERATIONS ARE TO BE PERFORMED CARE-FULLY AND ALL PORTIONS OF THE BUILDING SHALL BE PROTECTED DURING THESE OPERATIONS. ITEMS TO BE REUSED AND REINSTALLED ARE TO BE CAREFULLY REMOVED AND STORED. DAMAGES INCURRED DURING REMOVAL OR STORAGE SHALL BE THE CONTRACTOR'S RESPONSIBILITY.

ROOF LEGEND AND TYPICAL DETAILS:

- ← INDICATES EXISTING ROOF SLOPE (1/4" PER 12") (U.N.O.)
- ↖ INDICATES EXISTING ROOF SADDLE SLOPE (1/2" PER 12")
- ○ EXISTING ROOF DRAIN
- EXISTING EXHAUST FAN
- EXISTING PLUMBING VENT
- ▭ EXISTING LOUVER VENT ASSEMBLY

ROOF TYPES:

- A EXISTING BALLASTED MEMBRANE ROOFING SYSTEM.

ROOF PLAN NOTES:


- R01 CONTRACTOR TO INSTALL NEW EXHAUST HOOD AND CURB AND FLASH TO ROOF PER DETAIL X/A-XXX
- R02 NEW ALUMINUM GUARDRAIL - REFER TO DETAIL X/A-XXX
- R03 NEW ALUMINUM ROOF LADDER - REFER TO DETAIL X/A-XXX

ROOF PLAN DEMOLITION NOTES:

- D01 REMOVE EXISTING FASCIA COPING IN ITS ENTIRETY, MAINTAIN ROOF MEMBRANE EDGE AND KEEP WEATHER TIGHT.
- D02 CAREFULLY REMOVE EXISTING ROOFTOP UNITS IN ITS ENTIRETY, PREPARE ROOF CURB FOR NEW RTUS.
- D03 REMOVE ROOF MEMBRANE AND INSULATION AND PREPARE FOR EXHAUST UNIT INSTALLATION.
- D04 REMOVE ROOF MEMBRANE AND INSTALLATION AND PREPARE FOR NEW GUARDRAIL SYSTEM.

ROOF EDGE DETAILS:

- A METAL FASCIA COPING ———— 8 2 A-202 / A-203
- B ROOF CURB FLASHING ———— 9 A-202
- C ALUMINUM COPING ———— 4 A-203
- D ALUMINUM COPING ———— 7 A-202



GIBRALTAR DESIGN
ARCHITECTURE • ENGINEERING • INTERIOR DESIGN

CONSULTANT LOGO HERE - DELETE THIS TEXT AFTER INSERTION

PROJECT:
TRI-TOWNSHIP WANATAH SCHOOL RENOVATION AND RELATED WORK

TRI-TOWNSHIP SCHOOLS
309 SCHOOL DRIVE
WANATAH, IN 46390

100% CD SET

GIBRALTAR DESIGN
4030 Vincennes Rd., Ste. 100
Indianapolis, IN 46226
Homepage: www.GibraltarDesign.com
Email: info@GibraltarDesign.com
Phone 317.580.5777 Fax 317.580.5778

PROJECT: 25-185
DATE: 03/24/26
COORDINATED BY:
DESIGNED BY:
DRAWN BY:
Author: *Joseph P. Briggs*
CHECKED BY:
Checker:

COPYRIGHT NOTICE:
THE CONCEPTS, DESIGNS, PLANS, DETAILS, ETC. SHOWN ON THIS DOCUMENT ARE THE PROPERTY OF GIBRALTAR DESIGN AND WERE CREATED FOR USE ON THIS SPECIFIC PROJECT. NONE OF THIS INFORMATION SHALL BE USED BY ANY PERSON OR FIRM FOR ANY PURPOSE WITHOUT THE EXPRESS WRITTEN CONSENT OF GIBRALTAR DESIGN. THE OWNER MAY RETAIN COPIES FOR INFORMATION AND REFERENCE IN CONNECTION ONLY WITH THIS PROJECT.

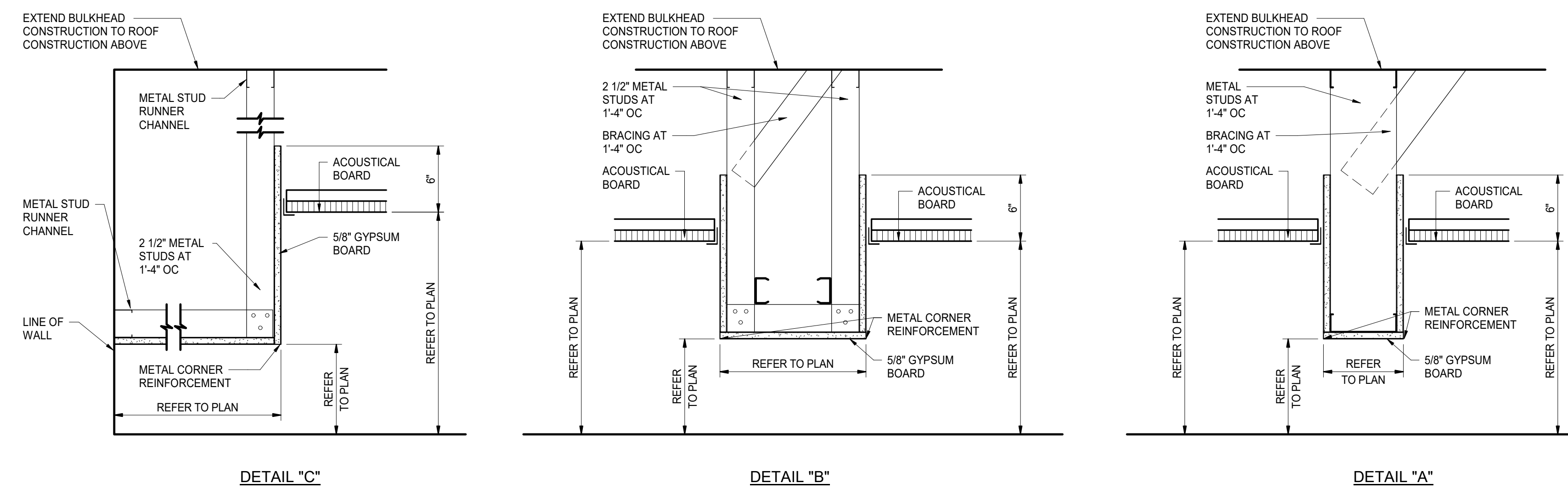
REVISIONS	MARK	DATE	ISSUED FOR
	AD-01	04/01/26	ADDENDUM 01

DRAWING:
OVERALL ARCHITECTURAL ROOF PLAN

PROJECT:
TRI-TOWNSHIP WANATAH SCHOOL RENOVATION AND RELATED WORK

© GIBRALTAR DESIGN SHEET
A-201

3/31/2026 11:48:40 AM C:\Users\cdice\Documents\25-185 Tri-Township Schools Renovation and Related Work - ARCH\R25_cdfce2MLDR.rvt

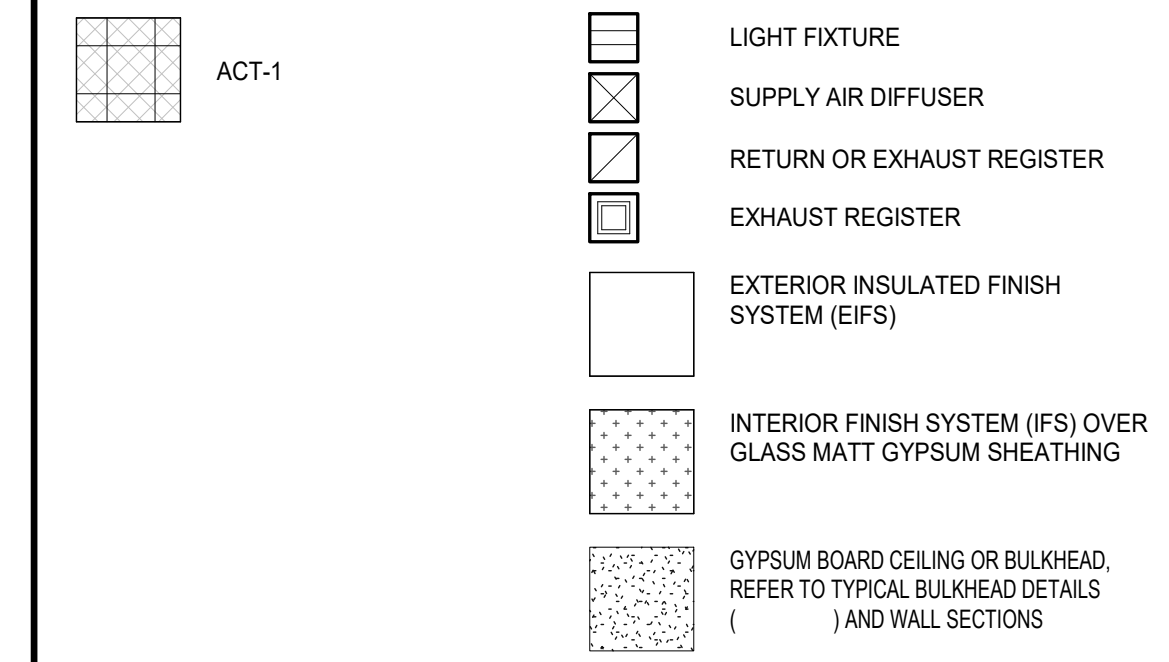


BULKHEAD DETAILS
 3
 A-901 1/2" = 1'-0"

GENERAL REFLECTED CEILING NOTES:

- A. FOR GENERAL PROJECT NOTES, MATERIAL INDICATIONS LEGEND, SYMBOL LEGEND, ABBREVIATIONS, ETC., REFER TO SHEET G-301.
- B. THE ARCHITECTURAL REFLECTED CEILING PLANS GOVERN THE LAYOUT OF ALL CEILING ELEMENTS AND PENETRATIONS.
- C. BULKHEAD FRAMING SHALL BE ATTACHED TO STRUCTURAL SUPPORTS AND NOT THE ROOF DECK.
- D. REFER TO FLOOR PLANS FOR WALL TYPES.
- E. REFER TO FIRE PROTECTION DRAWINGS FOR SPRINKLER HEAD TYPES AND QUANTITIES. HEADS HAVE INTENTIONALLY BEEN OMITTED FOR CLARITY.
- F. CEILING ACCESS PANELS INDICATED ARE NOT INTENDED TO LIMIT NUMBER OF PANELS REQUIRED. PANEL QUANTITY SHALL BE SUFFICIENT TO PROVIDE REQUIRED ACCESS WHETHER OR NOT INDICATED ON THE DRAWINGS. VERIFY FINAL LOCATIONS WITH ARCHITECT PRIOR TO STARTING WORK.
- G. REFER TO ELECTRICAL DRAWINGS FOR LIGHT FIXTURE TYPE AND QUANTITIES.
- H. REFER TO MECHANICAL DRAWINGS FOR DIFFUSERS, GRILL TYPES AND QUANTITIES - ALL MECHANICAL ITEMS MAY NOT BE INDICATED ON THIS SHEET.
- I. REFER TO TECHNOLOGY DRAWINGS FOR ADDITIONAL CEILING MOUNTED TECHNOLOGY ITEMS.
- J. REFER TO FINISH PLANS AND INTERIOR ELEVATIONS FOR PAINT COLORS.

CEILING LEGEND

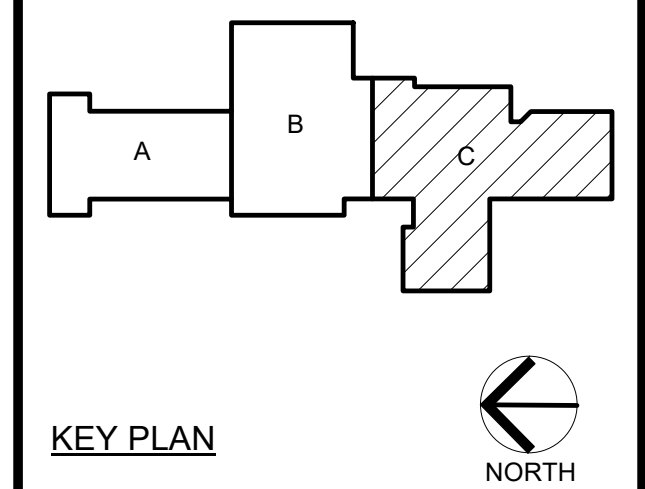


REFLECTED CEILING PLAN NOTES

- C01 INSTALL NEW CEILING SYSTEM IN ITS ENTIRETY.
- C02 PAINTED GYPSUM BOARD BULKHEAD, TYPICAL.

GIBRALTAR DESIGN
 ARCHITECTURE • ENGINEERING • INTERIOR DESIGN
 CONSULTANT LOGO HERE - DELETE THIS TEXT AFTER INSERTION

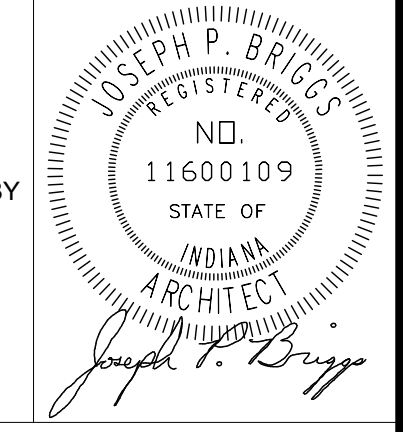
PROJECT:
TRI-TOWNSHIP WANATAH SCHOOL RENOVATION AND RELATED WORK
 TRI-TOWNSHIP SCHOOLS
 309 SCHOOL DRIVE
 WANATAH, IN 46390



100% CD SET

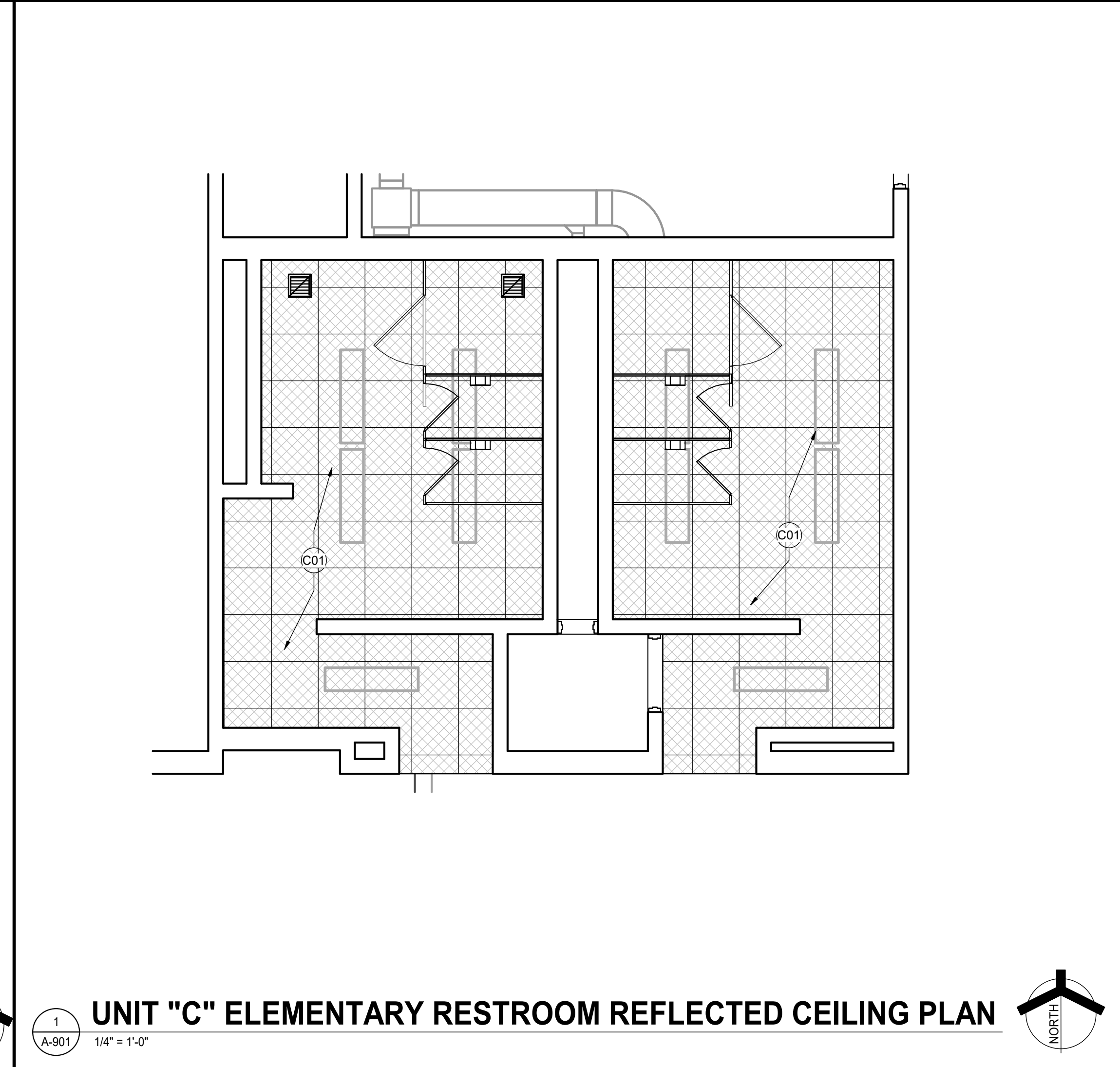
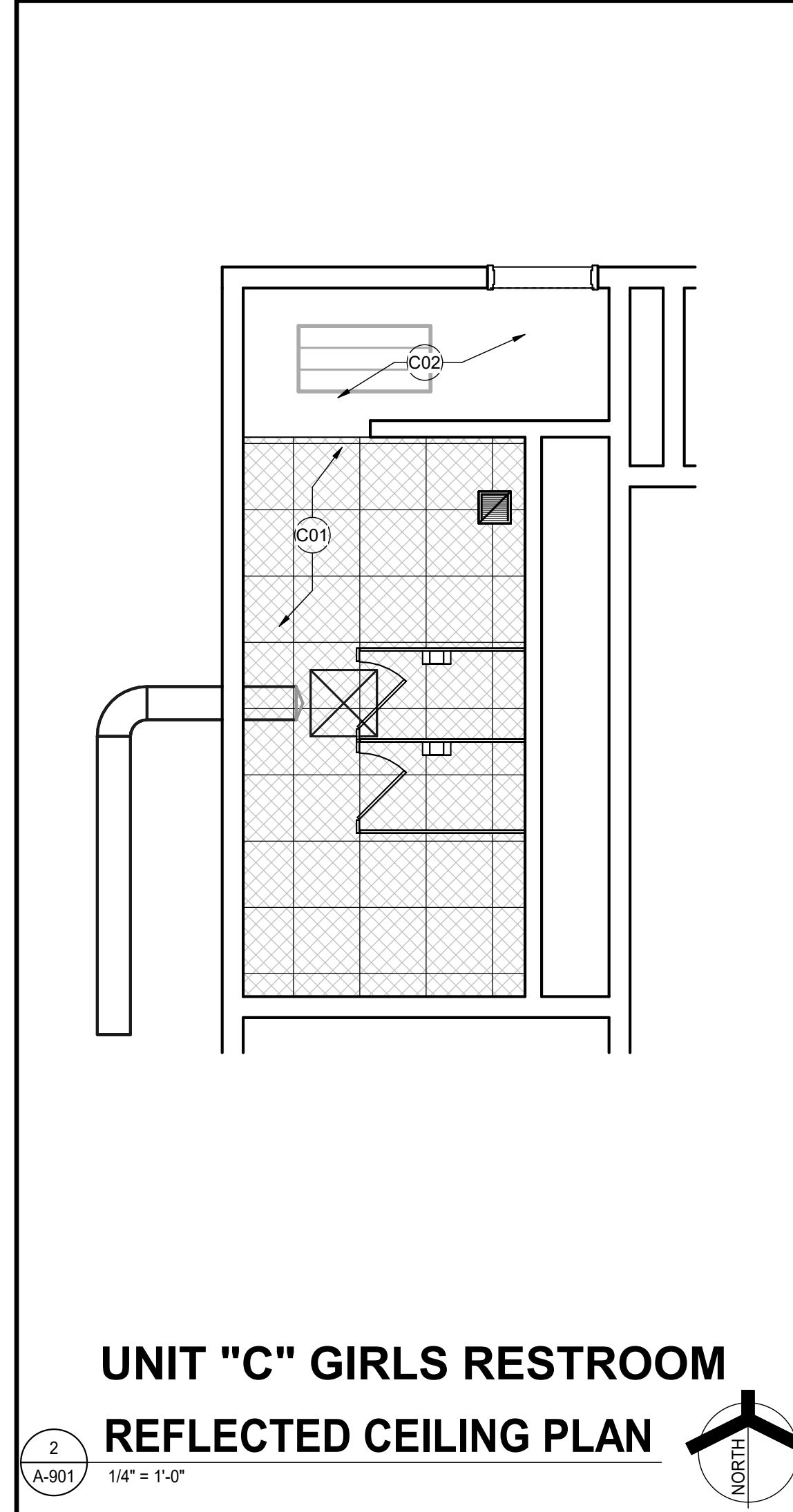
GIBRALTAR DESIGN
 4030 Vincennes Rd., Ste. 100
 Indianapolis, IN 46226
 Homepage: www.GibraltarDesign.com
 Email: info@GibraltarDesign.com
 Phone 317.580.5777 Fax 317.580.5778

PROJECT 25-185
 DATE 03/24/26
 COORDINATED BY
 Designer
 DRAWN BY
 Author
 CHECKED BY
 Checker



COPYRIGHT NOTICE:
 THE CONCEPTS, DESIGNS, PLANS, DETAILS, ETC. SHOWN ON THIS DOCUMENT ARE THE PROPERTY OF GIBRALTAR DESIGN AND WERE CREATED FOR USE ON THIS SPECIFIC PROJECT. NONE OF THIS INFORMATION SHALL BE USED BY ANY PERSON OR FIRM FOR ANY PURPOSE WITHOUT THE EXPRESS WRITTEN CONSENT OF GIBRALTAR DESIGN. THE OWNER MAY RETAIN COPIES FOR INFORMATION AND REFERENCE IN CONNECTION ONLY WITH THIS PROJECT.

REVISIONS	MARK	DATE	ISSUED FOR
	AD-01	04/01/26	ADDENDUM 01



DRAWING
UNIT "C" FIRST FLOOR REFLECTED CEILING PLAN AND BULKHEAD DETAILS
 PROJECT
 TRI-TOWNSHIP WANATAH SCHOOL RENOVATION AND RELATED WORK
 © GIBRALTAR DESIGN SHEET
C A-901



GIBRALTAR
DESIGN
ARCHITECTURE • ENGINEERING • INTERIOR DESIGN

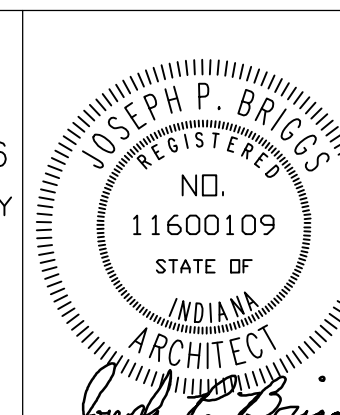
PROJECT:
**TRI-TOWNSHIP
WANATAH
SCHOOL
RENOVATION
AND RELATED
WORK**

TRI-TOWNSHIP SCHOOLS
309 SCHOOL DRIVE
WANATAH, IN 46390

100% CD Set

GIBRALTAR DESIGN
4030 Vincennes Rd., Ste. 100
Indianapolis, IN 46260
Homepage: www.GibraltarDesign.com
Email: info@GibraltarDesign.com
Phone: 317.580.5777 Fax: 317.580.5778

PROJECT:
25-185
DATE:
03/24/2026
COORDINATED BY:
JPB
DRAWN BY:
CED
CHECKED BY:
JPB



COPYRIGHT NOTICE:
THE CONCEPTS, DESIGNS, PLANS, DETAILS, ETC. SHOWN ON THIS DOCUMENT ARE THE PROPERTY OF GIBRALTAR DESIGN AND WERE CREATED FOR USE ON THIS SPECIFIC PROJECT. NONE OF THIS INFORMATION SHALL BE USED BY ANY PERSON OR FIRM FOR ANY PURPOSE WITHOUT THE EXPRESS WRITTEN CONSENT OF GIBRALTAR DESIGN. THE OWNER MAY RETAIN COPIES FOR INFORMATION AND REFERENCE IN CONNECTION ONLY WITH THIS PROJECT.

REVISIONS	MARK	DATE	ISSUED FOR
AD-1	104/01/26		ADDENDUM 01

DRAWING:
**ENLARGED LAYOUT SITE
PLAN - SOUTH**

PROJECT:
TRI-TOWNSHIP WANATAH SCHOOL
RENOVATION AND RELATED WORK

GIBRALTAR DESIGN SHEET
C-101

PLAN NOTES:

(ALL PLAN NOTES MAY NOT BE INDICATED ON THIS SHEET.)

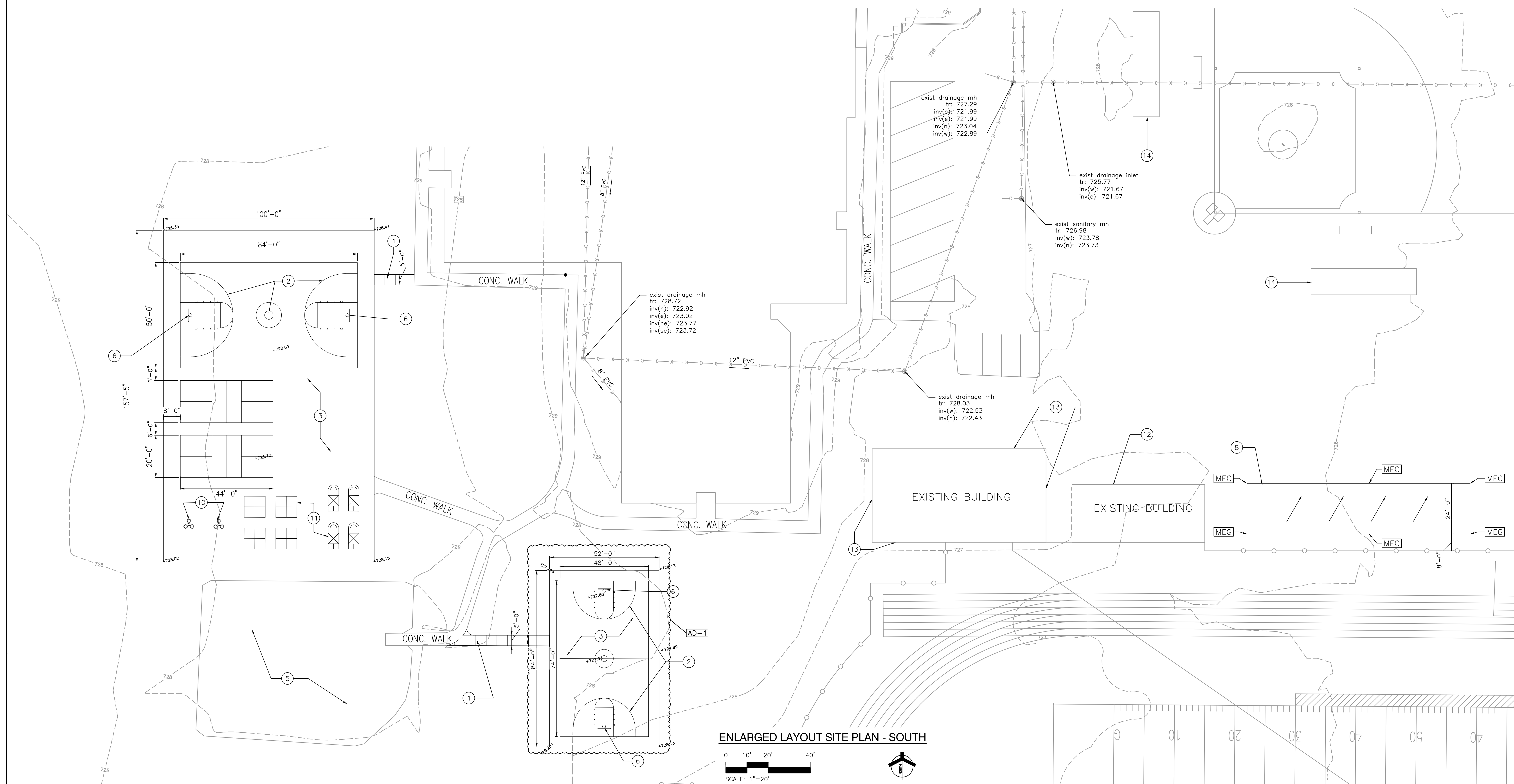
- 1 NEW CONCRETE WALK.
- 2 NEW BASKETBALL BALL COURT LINES.
- 3 NEW HARDFEEL ASPHALT PLAYGROUND.
- 4 RELOCATE EXISTING FLAG POLE TO NEW LOCATION.
- 5 EXISTING SOFT SURFACE PLAY AREA TO REMAIN.
- 6 RELOCATED BASKETBALL BACKSTOPS.
- 7 PROVIDE 3" OF DECORATION STONE ON TOP OF 18" OF TOP SOIL.
- 8 NEW CONCRETE PLATFORM FOR FUTURE GRANDSTAND.
- 9 INSTALL NEW 8X8 AND 4X8 BRICK PAVERS AROUND STRUCTURE. REFER TO DETAIL.
- 10 PLAYGROUND EQUIPMENT - BY OWNER.
- 11 CONTRACTOR IS TO INCLUDE PLAYGROUND PLAY LINE PAINTING.
- 12 REMOVE AND REPLACE VINYL SIDING AND TRIM ON EXISTING GARAGE.
- 13 CONTRACTOR IS TO CLEAN AND PAINT METAL SIDING AND TRIM - COLOR TO BE SELECTED BY OWNER. CONTRACTOR IS TO PAINT SOFFIT AND ROOF EDGE A SECOND COLOR TO BE SELECTED BY OWNER.
- 14 CONTRACTOR IS TO PAINT EXTERIOR SIDES OF MASONRY DUGOUTS ONE COLOR AND INTERIOR OF DUGOUTS A SECOND COLOR. CONTRACTOR IS TO PAINT THE WOOD TRIM ON ROOF FASCIA A THIRD COLOR. OWNER TO SELECT COLORS.
- 15 NEW ASPHALT PAVING SYSTEM AND INCLUDE ALL NEW PAINTED LINE WORK.
- 16 NEW LIGHT POST FOR NEW PARKING AREA.
- 17 NEW ASPHALT TRENCH INFILL - MATCH EXISTING ASPHALT SYSTEM (ASSUME SIMILAR TO MEDIUM DUTY DETAIL).

GENERAL PLAN NOTES:

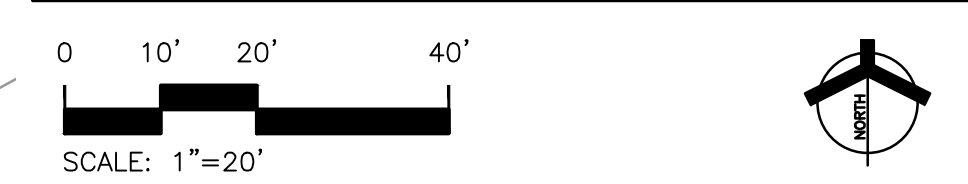
- A. FOR GENERAL PROJECT NOTES, MATERIAL INDICATIONS, LEGEND, SYMBOL, LEGEND, ABBREVIATIONS, ETC., REFER TO G SERIES SHEETS.
- B. PLAN DIMENSIONS TO MASONRY WALLS ARE TO FACE OF ROUGH MASONRY. PLAN DIMENSIONS TO STUD WALLS ARE TO FACE OF FINISHED GYPSUM BOARD OR PLASTER. PLAN DIMENSIONS TO STUD WALLS WITH CERAMIC TILE FINISH ARE TO THE FACE OF TILE BACKER BOARD.
- C. ALL CMU WALLS THAT DO NOT LAY OUT IN FULL OR HALF LENGTHS SHOULD BE BALANCED SO AS NOT TO HAVE ANY PIECES LESS THAN 4" IN SIZE EXPOSED TO VIEW.
- D. MASONRY WALLS BEARING ON A THICKENED SLAB AT SLAB DEPRESSIONS REQUIRE CUT MASONRY UNITS SO THAT COURSING BEGINS AT THE FLOOR LINE.
- E. THE BASE FIRST FLOOR ELEVATION INDICATED FOR THE PROJECT IS 100'-0". REFER TO SITE PLAN FOR CORRELATION TO USGS DATUM.
- F. HINGE SIDE OF DOOR JAMB AT CMU WALLS SHALL BE LOCATED 8" MINIMUM FROM ADJACENT WALL AND HINGE SIDE OF DOOR JAMB AT GYPSUM BOARD WALLS SHALL BE LOCATED 4" MINIMUM FROM ADJACENT WALL UNLESS NOTED OTHERWISE.
- G. PROVIDE WOOD BLOCKING (OR METAL STRAPPING WHERE APPLICABLE) AS REQUIRED WITHIN METAL STUD WALLS FOR WALL MOUNTED ITEMS.
- H. REFER TO LIFE SAFETY PLANS REGARDING FIRE RATED WALL LOCATIONS AND OTHER CODE INFORMATION.
- I. INTERIOR CMU WALLS ARE TO BE RUNNING BOND UNLESS NOTED OTHERWISE.
- J. ALL EXPOSED CONCRETE MASONRY UNITS (CMU) CORNERS ARE TO BE BULLNOSED, EXCEPT AT MASONRY BULKHEADS AND EXTERIOR WINDOW JAMBS.
- K. REFER TO FINISH PLANS FOR INTERIOR ELEVATIONS, LOCATION AND EXTENT OF FINISHED FLOOR AND WALL MATERIAL.
- L. REFER TO EQUIPMENT PLANS FOR CASEWORK, DISPLAY BOARDS, LOCKERS, AND OTHER ADDITIONAL TYPICAL EQUIPMENT NOTES AND INFORMATION.
- M. REFER TO EQUIPMENT PLANS FOR REFERENCE TO ENLARGED TOILET ROOM PLANS AND TOILET ACCESSORIES.

PLAN LEGEND:

MEG MATCH EXISTING GRADE



ENLARGED LAYOUT SITE PLAN - SOUTH



Tuesday, 3/31/2026 - 11:06 AM - LAST SAVED BY: CED
Y:\25-185 TRI-TOWNSHIP - WANATAH SCHOOL IMPROVEMENTS\25-185 CAD\03 SITE\C-101.DWG